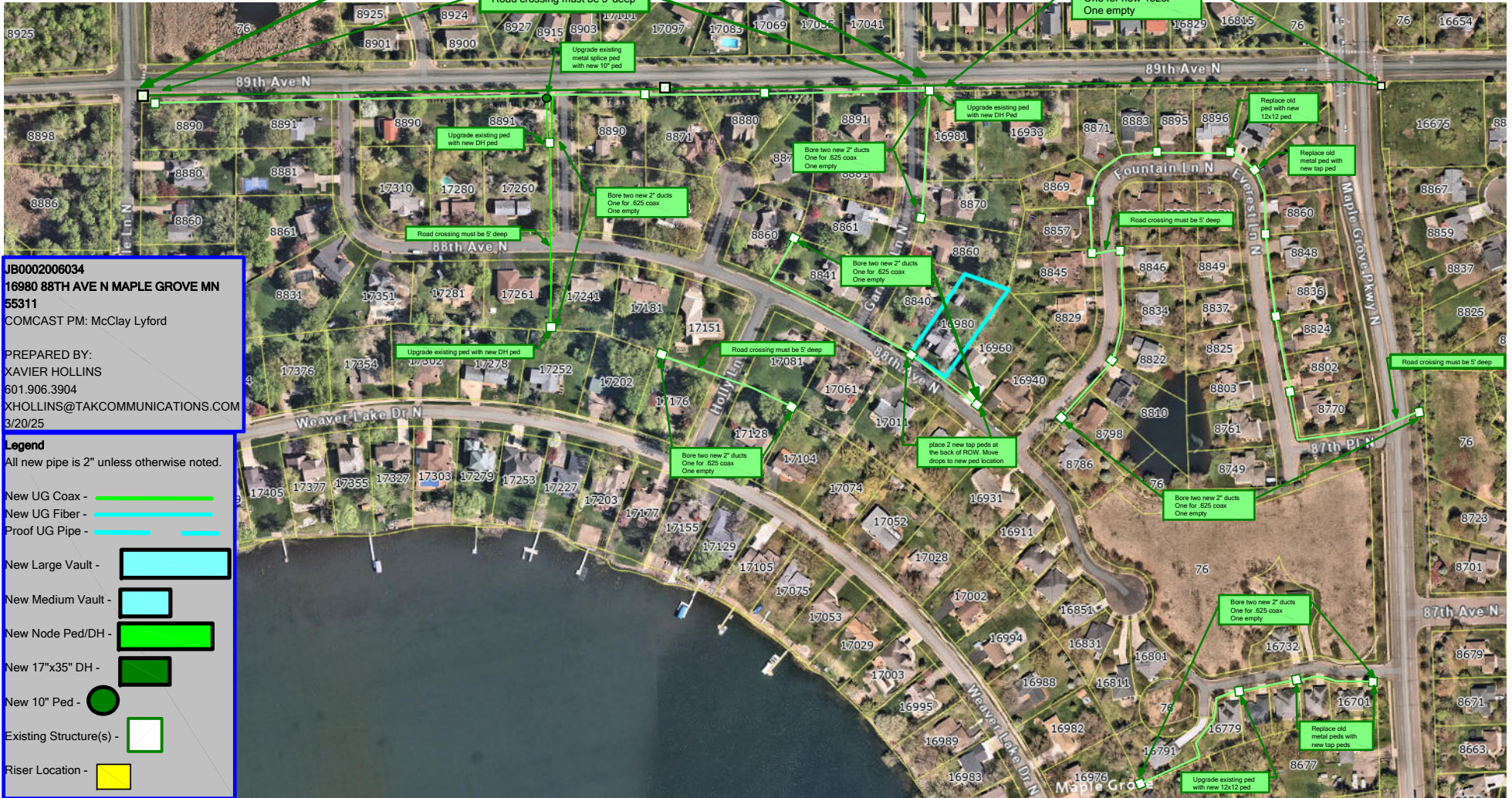


U10- 6,000'
 E2 - 1
 P2 - 1
 P11 - 1

Bore four new 2" ducts
 One for .875 coax
 One empty with coax
 One for new 432ct
 One empty with fiber

Road crossing must be 5' deep

Bore two new 2" ducts
 One for new 432ct
 One empty



JB0002006034
16980 88TH AVE N MAPLE GROVE MN
55311
 COMCAST PM: McClay Lyford
 PREPARED BY:
 XAVIER HOLLINS
 601.906.3904
 XHOLLINS@TAKCOMMUNICATIONS.COM
 3/20/25

Legend
 All new pipe is 2" unless otherwise noted.

- New UG Coax - —
- New UG Fiber - —
- Proof UG Pipe - —
- New Large Vault -
- New Medium Vault -
- New Node Ped/DH -
- New 17"x35" DH -
- New 10" Ped -
- Existing Structure(s) -
- Riser Location -