

THIS TRAFFIC CONTROL PLAN IS INTENDED TO BE A GUIDE ONLY. CONTRACTOR SHALL ENSURE ALL DEVICES AND LAYOUTS CONFORM TO THE CURRENT MN MUTCD, MNDOT, AND CITY REQUIREMENTS. PLAN IS NOT TO SCALE AND IS INTENDED FOR SIGN PLACEMENT

PROPERTY OWNED BY
CITY OF MAPLE GROVE
12951

UG-FIBER OPTIC
OVERBULL FIBER IN EXISTING DUCT
- INSTALL 288 SINGLE MODE ARMORED CABLE LEAVING 100' SLACK COILS PLACED VERTICALLY IN EACH HAND HOLE

EX-HH
100' SLACK COIL - 2896- FROM HH (1)
100' SLACK COIL - EX-77- FROM WEST

UG-FIBER OPTIC
DIRECTIONAL BORE FIBER 36" DEPTH
- INSTALL TWO 1.25" CONDUIT ORANGE/BLUE
- INSTALL 12 AWG TRACE WIRE USING THE BLUE CONDUIT
- INSTALL 288 SINGLE MODE ARMORED CABLE LEAVING 100' SLACK COILS PLACED VERTICALLY IN EACH HAND HOLE

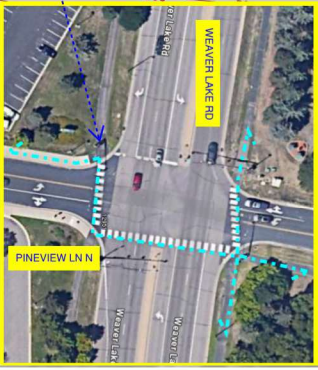
END OF PERMIT 1 -
START OF PERMIT 2
STATION 7+90

SIDEWALK CLOSED
R9-9

SIDEWALK CLOSED
R9-9

SIDEWALK CLOSED
AHEAD
CROSS HERE
R9-11
(R or L)

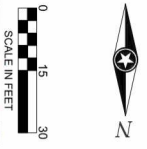
SIDEWALK CLOSED
AHEAD
CROSS HERE
R9-11
(R or L)



SOUTHEAST PEDESTRIAN CROSSING
DETOUR



NORTHWEST PEDESTRIAN
CROSSING DETOUR



1972
Celebrating 50 Years of Excellence

PROJECT
**LOGIS
401020
MG COMMUNITY
CTR - RELOCATION
PHASE 1**

MAPLE GROVE, MINNESOTA

DATE	REVISION/SCHEDULE	DESCRIPTION	BY

PROJECT NO. 25-22285
FILE NAME 25-2285 TRAFFIC.T
DRAWN BY BJS
DESIGNED BY BJS
REVIEWED BY KV
ORIGINAL ISSUE DATE 2/19/25
CLIENT PROJECT NO. 401020

TITLE
**TRAFFIC CONTROL
PLAN**

SHEET
7A