

MCI metro ACCESS TRANSMISSION SERVICES CORP

2502AIUW_MIN DUNKIRK SC1.3_3/11/25



MAPLE GROVE, MINNESOTA

PRELIMINARY PLAN

ISG PROJECT # 25-32304



MAP LEGEND:

- UNDERGROUND
- AERIAL
- OVERPULL

LOCATION MAP

Sheet List Table

1	TITLE
2	LEGENDS-NOTES
3	CONTACT SHEET
4	GENERAL NOTES
5	BOM
6	PLAN SHEET
7	PLAN SHEET
8	PLAN SHEET
9	PLAN SHEET
10	PLAN SHEET
11	PLAN SHEET
12	PLAN SHEET

PERMITS

PERMIT #	DESCRIPTION	SHEET	QUANTITY
PERMIT 1	HENNEPIN COUNTY	6	16
PERMIT 2	CITY OF MAPLE GROVE	6-12	3768

QUALITY LEVEL D DRAWING
 INFORMATION FOR THE BOUNDARY / LOT LINES, AND UNDERGROUND UTILITIES SHOWN WAS DERIVED FROM DIGITAL DATABASES AND IS FOR INFORMATIONAL PURPOSES ONLY. DATA MAY NOT HAVE BEEN PREPARED FOR, OR BE SUITABLE FOR, LEGAL, ENGINEERING, OR SURVEYING PURPOSES.

PROJECT GENERAL NOTES

- ALL WORK SHALL CONFORM TO THE CONTRACT DOCUMENTS, WHICH INCLUDE, BUT ARE NOT LIMITED TO, THE OWNER - CONTRACTOR AGREEMENT, THE PROJECT MANUAL (WHICH INCLUDES GENERAL SUPPLEMENTARY CONDITIONS AND SPECIFICATIONS), DRAWINGS OF ALL DISCIPLINES AND ALL ADDENDA, MODIFICATIONS AND CLARIFICATIONS ISSUED BY THE ARCHITECT/ENGINEER.
- CONTRACT DOCUMENTS SHALL BE ISSUED TO ALL SUBCONTRACTORS BY THE GENERAL CONTRACTOR IN COMPLETE SETS IN ORDER TO ACHIEVE THE FULL EXTENT AND COMPLETE COORDINATION OF ALL WORK.
- WRITTEN DIMENSIONS TAKE PRECEDENCE OVER SCALED DIMENSIONS. NOTIFY ARCHITECT/ENGINEER OF ANY DISCREPANCIES OR CONDITIONS REQUIRING INFORMATION OR CLARIFICATION BEFORE PROCEEDING WITH THE WORK.
- FIELD VERIFY ALL EXISTING CONDITIONS AND DIMENSIONS. NOTIFY ARCHITECT/ENGINEER OF ANY DISCREPANCIES OR CONDITIONS REQUIRING INFORMATION OR CLARIFICATION BEFORE PROCEEDING WITH THE WORK.
- DETAILS SHOWN ARE INTENDED TO BE INDICATIVE OF THE PROFILES AND TYPE OF DETAILING REQUIRED THROUGHOUT THE WORK. DETAILS NOT SHOWN ARE SIMILAR IN CHARACTER TO DETAILS SHOWN. WHERE SPECIFIC DIMENSIONS, DETAILS OR DESIGN INTENT CANNOT BE DETERMINED, NOTIFY ARCHITECT/ENGINEER BEFORE PROCEEDING WITH THE WORK.
- ALL MANUFACTURED ARTICLES, MATERIALS AND EQUIPMENT SHALL BE APPLIED, INSTALLED, CONNECTED, ERECTED, CLEANED AND CONDITIONED ACCORDING TO MANUFACTURERS' INSTRUCTIONS. IN CASE OF DISCREPANCIES BETWEEN MANUFACTURERS' INSTRUCTIONS AND THE CONTRACT DOCUMENTS, NOTIFY ARCHITECT/ENGINEER BEFORE PROCEEDING WITH THE WORK.
- ALL DISSIMILAR METALS SHALL BE EFFECTIVELY ISOLATED FROM EACH OTHER TO AVOID GALVANIC CORROSION.
- THE LOCATION AND TYPE OF ALL INPLACE UTILITIES SHOWN ON THE PLANS ARE FOR GENERAL INFORMATION ONLY AND ARE ACCURATE AND COMPLETE TO THE BEST OF THE KNOWLEDGE OF I & S GROUP, INC. (ISG). NO WARRANTY OR GUARANTEE IS IMPLIED. THE CONTRACTOR SHALL VERIFY THE SIZES, LOCATIONS AND ELEVATIONS OF ALL INPLACE UTILITIES PRIOR TO CONSTRUCTION. CONTRACTOR SHALL IMMEDIATELY NOTIFY ENGINEER OF ANY DISCREPANCIES OR VARIATIONS FROM PLAN.
- THE CONTRACTOR IS TO CONTACT "GOPHER STATE ONE CALL" FOR UTILITY LOCATIONS, MINIMUM 2 BUSINESS DAYS PRIOR TO ANY EXCAVATION / CONSTRUCTION (1-800-252-1166).



SHEET NOT VALID UNLESS THIS TEXT IS COLOR.

PROJECT
2502AIUW_MIN DUNKIRK SC1.3
8000 LAWDALE LN N
MAPLE GROVE MINNESOTA

REVISION SCHEDULE		
DATE	DESCRIPTION	BY

PROJECT NO.	25-32304
FILE NAME	32304 - TITLE
DRAWN BY	SS
DESIGNED BY	SS
REVIEWED BY	KV
ORIGINAL ISSUE DATE	03/11/2025
CLIENT PROJECT NO.	2502AIUW

PROJECT INDEX:

OWNER:
MCI metro ACCESS TRANSMISSION SERVICES CORP. D/B/A VERIZON ACCESS TRANSMISSION OUTSIDE PLANT CONSTRUCTION

CONTRACTOR:
TBD

PROJECT LOCATION:
SECTION: T119, R22, S19
ADDRESS:
8000 LAWDALE LN N
MAPLE GROVE, MN 55311
LATITUDE: 45.099362°
LONGITUDE: -93.503058°

MANAGING OFFICE:
I & S GROUP, INC. (ISG)

MANKATO OFFICE
115 EAST HICKORY STREET
SUITE 300
MANKATO, MN 56001
PHONE: 507.387.6651
PROJECT MANAGER: KONG VUE
EMAIL: kong.vue@isginc.com

TITLE
TITLE

SHEET
1 OF 12



SHEET NOT VALID UNLESS THIS TEXT IS COLOR.

PROJECT
**2502AIUW_MIN
DUNKIRK SC1_3**
8000 LAWDALE LN N
MAPLE GROVE MINNESOTA

REVISION SCHEDULE		
DATE	DESCRIPTION	BY

PROJECT NO.	25-32304
FILE NAME	32304 - TITLE
DRAWN BY	SS
DESIGNED BY	SS
REVIEWED BY	KV
ORIGINAL ISSUE DATE	03/11/2025
CLIENT PROJECT NO.	2502AIUW

TITLE
LEGENDS-NOTES

SYMBOL LEGEND

EXISTING		PROPOSED
	MANHOLE	
	MANHOLE (OTHERS)	
	STORM INLET	
	STORM CULVERT	
	BOX CULVERT	
	WATER VALVE	
	HYDRANT	
	UTILITY POLE	
	UTILITY POLE (OTHERS)	
	LIGHT POLE	
	DOWN GUY + ANCHOR	
	DOWN GUY + ANCHOR (OTHERS)	
	SIDEWALK GUY + ANCHOR	
	RISER	
	GROUND	
	AERIAL SLACK LOOP	
	SLACK COIL	
	SPLICE POINT	
	TRANSFORMER	
	UTILITY PED / CABINET	
	UTILITY PED / CABINET (OTHERS)	
	HANDHOLE	
	HANDHOLE (OTHERS)	
	ELECTRIC METER	
	JUNCTION BOX	
	TRAFFIC CONTROL BOX	
	CROSSWALK BUTTON	
	TRAFFIC SIGNAL / LIGHT	
	GAS METER	
	GAS VALVE	
	UTILITY WARNING MARKER	
	RIGHT-OF-WAY MARKER	
	SURVEY / MONUMENT MARKER	
	SIGN	
	RAILROAD CROSSING SIGN	
	CELL TOWER	
	UTILITY DAYLIGHT / POTHOLE	
	BORE PIT	
	SIDEWALK OR PAVEMENT REMOVAL	
	TREE	
	BUSH	
	WETLAND / MARSH	

NOTE:
CONTRACTOR SHALL FIELD VERIFY THE LOCATIONS OF ALL EXISTING UTILITIES.

LINETYPE LEGEND

EXISTING		PROPOSED
	DIRECTIONAL BORE	
	FLOW	
	AERIAL	
	OPEN TRENCH	
	OVERPULL	
	OVERLASH	
	OVERHEAD GUY	
	UNDERGROUND STRUCTURE	
	EXCAVATION AREA	
	EDGE OF PAVEMENT	
	EDGE OF GRAVEL	
	FACE OF CURB	
	BACK OF CURB	
	RIGHT OF WAY	
	PROPERTY LINE	
	CENTERLINE	
	DRIVEWAY	
	SIDEWALK	
	WATERWAY	
	WETLAND	
	GUARDRAIL	
	FENCE	
	BUILDING	
	EASEMENT	
	LANDSCAPING	
	TREE LINE	
	RAILROAD	
	SANITARY	
	STORM	
	WATERMAIN	
	ELECTRIC	
	FIBER OPTIC	
	TELEPHONE	
	CABLE TV	
	GAS	
	STREET LIGHT / TRAFFIC LIGHT	
	STEAM	
	OIL	
	DISTRICT ENERGY	
	DISTRICT ENERGY (HOT WATER)	
	DISTRICT ENERGY (CHILLED WATER)	
	OVERHEAD UTILITY	
	UNKOWN UTILITY	
	CONDUIT	
	CONTOURS (MAJOR)	
	CONTOURS (MINOR)	

NOTE:
CONTRACTOR SHALL FIELD VERIFY THE LOCATIONS OF ALL EXISTING UTILITIES.

ABBREVIATIONS

AC	ACRE	INV	INVERT
ADA	AMERICANS WITH DISABILITIES ACT	IP	IRON PIPE
ADD	ADDENDUM	IPS	IRON PIPE SIZE
AFF	ABOVE FINISHED FLOOR	J-BOX	JUNCTION BOX
AGG	AGGREGATE	JT	JOINT
APPROX	APPROXIMATE	LF	LINEAR FEET
ARCH	ARCHITECT, ARCHITECTURAL	LIN	LINEAR
BFE	BASEMENT FLOOR ELEVATION	LPS	LOW PRESSURE STEAM
BIT	BITUMINOUS	LS	LUMP SUM
CAD	COMPUTER-AIDED DESIGN	LSO	LOWEST STRUCTURAL OPENING
CB	CATCH BASIN	MAX	MAXIMUM
CFS	CUBIC FEET PER SECOND	MB	MAIL BOX
CF	CUBIC FOOT	MECH	MECHANICAL
CI	CAST IRON	MH	MANHOLE
CIP	CAST IRON PIPE	MIN	MINIMUM
CIPC	CAST IN PLACE CONCRETE	MISC	MISCELLANEOUS
CJ	CONTROL JOINT	NO	NUMBER
CL	CENTERLINE	NTS	NOT TO SCALE
CMP	CORRUGATED METAL PIPE	NWL	NORMAL WATER LEVEL
CO	CLEANOUT	OC	ON CENTER
CONC	CONCRETE	OCEW	ON CENTER EACH WAY
CONST	CONSTRUCTION	OH	OVERHEAD
CONT	CONTINUOUS	OHD	OVERHEAD DOOR
CY	CUBIC YARD	OZ	OUNCE
C&G	CURB AND GUTTER	PED	PEDESTAL, PEDESTRIAN
DEMO	DEMOLITION	PERF	PERFORATED
DIA	DIAMETER	PL	PROPERTY LINE
DIM	DIMENSION	PP	POLYPROPYLENE
DS	DOWNSPOUT	PSI	POUNDS PER SQUARE INCH
EA	EACH	PVC	POLYVINYL CHLORIDE
ELEC	ELECTRICAL	PVMT	PAVEMENT
ELEV	ELEVATION	QTY	QUANTITY
EOF	EMERGENCY OVERFLOW	RAD	RADIUS
EQ	EQUAL	RCP	REINFORCED CONCRETE PIPE
EX	EXISTING	RD	ROOF DRAIN
FDC	FIRE DEPARTMENT CONNECTION	REBAR	REINFORCING BAR
FDN	FOUNDATION	REM	REMOVE
FFE	FINISHED FLOOR ELEVATION	ROW	RIGHT OF WAY
FPM	FEET PER MINUTE	R/W	RIGHT OF WAY
FPS	FEET PER SECOND	SAN	SANITARY
FT	FOOT, FEET	SCH	SCHEDULE
FTG	FOOTING	SF	SQUARE FOOT
GA	GAUGE	SPEC	SPECIFICATION
GAL	GALLON	SQ	SQUARE
GALV	GALVANIZED	STA	STATION
GC	GENERAL CONTRACTOR	SY	SQUARE YARD
GFE	GARAGE FLOOR ELEVATION	T/C	TOP OF CURB
GL	GUTTER LINE	TEL	TELEPHONE
GPM	GALLONS PER MINUTE	TEMP	TEMPORARY
GV	GATE VALVE	THRU	THROUGH
HDPE	HIGH DENSITY POLYETHYLENE	TNFH	TOP NUT OF FIRE HYDRANT
HD	HEAVY DUTY	TRANS	TRANSFORMER
HH	HANDHOLE	TV	TELEVISION
HORIZ	HORIZONTAL	T/W	TOP OF WALL
HR	HOUR	TYP	TYPICAL
HWL	HIGH WATER LEVEL	UT	UTILITY, UNDERGROUND TELEPHONE
HWY	HIGHWAY	VCP	VITRIFIED CLAY PIPE
HYD	HYDRANT	W/O	WITHOUT
I	INVERT	W/	WITH
ID	INSIDE DIAMETER	YD	YARD
IN	INCH	YR	YEAR

VERIZON BUSINESS

OUTSIDE PLANT ENGINEERING:

ASSOCIATE DIRECTOR OUTSIDE PLANT:

DAN SCHMIDT
1200 WASHINGTON AVE
MINNEAPOLIS, MN 55401
P: 612.221.7997

SENIOR ENGINEER TECHNICAL PROJECT MANAGER - OUTSIDE PLANT:

JOEL BROWN
1200 WASHINGTON AVE
MINNEAPOLIS, MN 55401
P: 612.290.3975

ENGINEERING CONTRACTOR:

ISG INC.

KONG VUE
7900 INTERNATIONAL DRIVE
SUITE 550
BLOOMINGTON, MN 55425
P: 952.426.0699

CONSTRUCTION CONTRACTOR:

TBD

UTILITIES

ARVIG	(218) 346-5500
COMCAST	(800) 778-9140
CITY OF MAPLE GROVE	(763) 494-6370
WINDSTREAM	(800) 941-3430
CENTURY LINK	(855) 742-6062
CONSOLIDATED COMMUNICATIONS	(800)778-9140
HENNEPIN COUNTY PUBLIC WORKS	(406) 541-9571
MCI	(800) 624-9675
CENTER POINT ENERGY	(812) 483-7923
US INTERNET CORP	(612) 747-6174
SPRINT	(800) 521-0579
CENTURY LINK	(855) 742-6062
XCEL ENERGY	(800) 848-7558
ZAYO BANDWIDTH	(888) 267-1063
ZAYO ENTERPRISE NETWORK	(218) 346-5500

CITY GOVERNMENT

CTY OF MAPLE GROVE

PUBLIC WORKS
9030 FORESESTVIEW LANE
MAPLE GROVE, MN 55369
P: 763.494.6370
publicworks@maplegrovmn.gov

ENGINEERING
12800 ARBOR LAKES PARKWAY N
MAPLE GROVE, MN 55369
P: 763.494.6350
engineering@maplegrovmn.gov

COUNTY GOVERNMENT

HENNEPIN COUNTY

3650 FREMONT AVE N
MINNEAPOLIS, MN 55412
P: 612.596.0339
roadpermits@hennepin.us

STATE GOVERNMENT

MINNESOTA DEPARTMENT OF TRANSPORTATION

ANN DRIVER
UTILITY PERMITS
MAILSTOP 678
395 JOHN IRELAND BLVD
SAINT PAUL, MN 55155
ann.driver@state.mn.us



SHEET NOT VALID UNLESS THIS TEXT IS COLOR.

PROJECT

**2502AIUW_MIN
DUNKIRK SC1_3**

8000 LAWDALE LN N

MAPLE GROVE MINNESOTA

REVISION SCHEDULE		
DATE	DESCRIPTION	BY

PROJECT NO.	25-32304
FILE NAME	32304 - TITLE
DRAWN BY	SS
DESIGNED BY	SS
REVIEWED BY	KV
ORIGINAL ISSUE DATE	03/11/2025
CLIENT PROJECT NO.	2502AIUW

TITLE

CONTACT SHEET

SHEET

3

OF 12

GENERAL CONSTRUCTION NOTES:

1. CONSTRUCTION PERMITS OR NOTIFICATIONS HAVE BEEN COMPLETED OR APPLIED FOR BY ISG.
2. ANY ADJACENT AREAS DAMAGED DURING CONSTRUCTION MUST BE RESTORED TO THEIR ORIGINAL CONDITION.
3. THE CONTRACTOR SHALL PROTECT EXISTING PROPERTY IRONS DURING CONSTRUCTION AND RESET BY A LICENSED LAND SURVEYOR IF DISTURBED.
4. ROUTE DEVIATIONS SHALL NOT BE ALLOWED WITHOUT CONCURRENCE OF DESIGNER.
5. BRUSHING AND TREE REMOVAL IS THE RESPONSIBILITY OF THE CONTRACTOR WITH THE FOLLOWING CONDITIONS:
-ALL BRUSH AND TREES ARE TO BE REMOVED AND DISPOSED OF BY THE CONTRACTOR.
6. ALL ROCKS TURNED UP DURING PLACEMENT MUST BE REMOVED BY CONTRACTOR OR PLACED BACK IN TRENCH DURING RESTORATION SO AS NOT TO CAUSE A HAZARD FOR VEHICLE OR FOOT TRAVEL.
7. ALL ABRUPT CHANGES IN GRADE SUCH AS BERMS AND DITCHES SHALL BE GRADUALLY SLOPED AND RESTORED TO THEIR NATURAL STATE.
8. UNLESS OTHERWISE SPECIFIED BY THE DESIGNER, THE CABLE PLACING DEPTHS ARE:

FIBER OPTIC CABLE
MINIMUM DEPTH IN SOIL: 36"
MINIMUM DEPTH AT ROAD CROSSING: 60" (IN RURAL AREAS)
9. THE CONTRACTOR IS RESPONSIBLE FOR PLACING ROAD GRAVEL IN ALL HAND HOLES PLACED OR ENTERED.
10. A MINIMUM 6" BED OF ROAD GRAVEL SHOULD BE PLACED PRIOR TO SETTING HAND HOLES.
11. ACORN TYPE HEX HEAD THREADED GROUND ROD CLAMPS SHOULD BE USED TO FASTEN GROUND WIRE TO GROUND RODS IN HAND HOLES WITHOUT RHINO TEST STATIONS.
12. ALL CABLE, DUCT & TRACER WIRE SHOULD BE TAGGED BY CONSTRUCTION CONTRACTOR.
13. BORES OVER 500 FT. MAY BE BROKEN UP INTO SHORTER BORES FOR CONTRACTORS CONVENIENCE, WITH THE EXCEPTION TO PLACING BORE PITS IN WETLANDS WHICH WILL HAVE TO BE APPROVED BY DESIGNER.
14. PROPOSED WETLAND BORE PITS SHOULD BE RECEIVING PITS ONLY, PREFERABLY COUPLING OF DUCT BE COMPLETED BY HAND-DIGGING ONLY. DO NOT SET UP THE BORE RIG IN WETLANDS, WITHOUT PRIOR AUTHORIZATION.
15. ALL AERIAL CONSTRUCTION TO MEET NESC AND RUS SPECIFICATIONS.
16. PROPOSED PLACEMENT OF FACILITIES IS BASED ON DESIGN AND PLANNING LOCATES OBTAINED THROUGH THE STATE ONE CALL SYSTEM. ACTUAL FACILITY PLACEMENT IS SUBJECT TO CHANGE BASED ON FIELD LOCATES ENCOUNTERED DURING CONSTRUCTION.
17. PERMITS (PERMIT BOOK WILL BE PROVIDED PRIOR TO CONSTRUCTION). THE CONSTRUCTION CONTRACTOR IS RESPONSIBLE FOR REVIEWING AND FOLLOWING ANY AND ALL STIPULATIONS SET FORTH BY THE PERMIT ENTITIES.

FIBER OPTIC CABLE UNCOVERING SYSTEM

1. THE TITLE OF THIS PROGRAM, F.O.C.U.S., AN ACRONYM FOR "FIBER OPTIC CABLE UNCOVERING SYSTEM," WAS SELECTED TO REMIND EVERYONE INVOLVED WITH WORKING NEAR MCI'S ACTIVE FIBER OPTIC SYSTEMS TO FOCUS ON PROTECTING THE FACILITIES. IF, DURING THE COURSE OF THE PROJECT, YOU NOTICE ANY ACTIVITY WHICH MAY JEOPARDIZE THE MCI OSP FACILITIES, IT IS YOUR DUTY TO STOP THE WORK AND RE-F.O.C.U.S.
2. F.O.C.U.S. RULES MUST BE FOLLOWED ON ALL MCI PROJECTS INVOLVING WORK ON OR NEAR MCI OSP FACILITIES. SAFETY IS MCI'S NUMBER ONE PRIORITY; EVERYONE MUST REFRAIN FROM UNSAFE AND IMPROPER PRACTICES.
3. REVIEW OF F.O.C.U.S. IS MANDATORY AT EVERY PRE-BID, PRE-CONSRUCTION SITE MEETING AND DAILY TAILGATE MEETING. F.O.C.U.S. DISCUSSION MUST INCLUDE SITE-SPECIFIC HISTORY, UNIQUE PROBLEMS, FACILITY CONFIGURATIONS THAT MAY BE ENCOUNTERED, AND PAST ERRORS. "THOSE WHO DO NOT LEARN FROM HISTORY ARE DOOMED TO REPEAT IT." DO NOT LET THIS HAPPEN TO YOU.
4. ANY WORK NEAR OR REQUIRING HANDLING OF MCI OUTSIDE PLANT FACILITIES CAN ONLY BE PERFORMED WITH AN MCI EMPLOYEE OR CONTRACT REPRESENTATIVE PRESENT – THIS MEANS OUT OF HIS OR HER VEHICLE AND DIRECTLY MONITORING THE SYSTEM. THE REPRESENTATIVE MUST HAVE A PROPERLY OPERATING CABLE LOCATOR CHECKED FOR ACCURACY EVERY DAY PRIOR TO COMMENCEMENT OF WORK (COMPARISON OF LINE AND DEPTH READINGS TO ACTUAL LINE AND DEPTH OF THE CABLE).
5. LOCATE AND POTHOLE REQUIREMENTS:
 - PRIOR TO ANY EXCAVATION, THE MCI EMPLOYEE OR CONTRACT REPRESENTATIVE MUST VERIFY THE INITIAL LOCATE MARKS COMPLETED BY MCI OPERATIONS. DO NOT TRUST LOCATE RESULTS COMPLETED BY OTHERS! THE MCI OR CONTRACT REPRESENTATIVE MUST LOCATE THE CABLE RUNNING LINE BY MAKING AT LEAST ONE PASS IN EACH DIRECTION. LOCATE RESULTS MUST THEN BE COMPARED WITH PREVIOUS MARKS AND THE AS-BUILTS.
 - IF THE PROPOSED WORK INVOLVES DIGGING OR EXCAVATING WITHIN 3 FEET OF THE CABLE, THE CABLE ROUTE WILL BE MARKED CONTINUALLY WITH ORANGE PAINT AND SUPPLEMENTED BY MARKER FLAGS PLACED EVERY 10 FT. THE EXCAVATION CONTRACTOR MUST POTHOLE (ALL POTHOLES MUST BE COMPLETED BY HAND DIGGING OR VACUUM EXCAVATION) A MINIMUM OF EVERY 15 FT., THEN EXPOSE THE ENTIRE LENGTH OF THE CABLE BY HAND DIGGING OR VACUUM EXCAVATION.
 - IF THE PROPOSED WORK INVOLVES DIGGING OR EXCAVATING WITHIN 5 FEET (BUT NOT CLOSER THAN 3 FEET) OF THE CABLE, THE CABLE ROUTE WILL BE MARKED CONTINUALLY WITH ORANGE PAINT AND SUPPLEMENTED BY MARKER FLAGS PLACED EVERY 10 FT. THE EXCAVATION CONTRACTOR MUST POTHOLE THE CABLE A MINIMUM OF EVERY 15 FT.
 - IF THE PROPOSED WORK INVOLVES DIGGING OR EXCAVATING WITHIN 15 FEET (BUT NOT CLOSER THAN 5 FEET) OF THE CABLE, THE CABLE ROUTE WILL BE MARKED CONTINUALLY WITH ORANGE PAINT AND SUPPLEMENTED BY MARKER FLAGS PLACED EVERY 10 FT. THE EXCAVATION CONTRACTOR MUST POTHOLE THE CABLE A MINIMUM OF EVERY 30 FT.
6. EXPOSING REQUIREMENTS:
 - NO MECHANICAL EXCAVATION WITHIN 3 FT. OF OSP FACILITIES WILL BE ALLOWED UNLESS THE FACILITIES HAVE FIRST BEEN PROPERLY LOCATED, POTHOLED, POSITIVELY IDENTIFIED, CONTINUOUSLY EXPOSED BY HAND DIGGING OR VACUUM EXCAVATION, AND THE FACILITIES ARE CLEARLY VISIBLE.
 - IN ADDITION, MECHANICAL EXCAVATION WITHIN 3 FT. OF OSP FACILITIES REQUIRES ON-SITE PRIOR APPROVAL FROM MCI'S EMPLOYEE OR CONTRACT REPRESENTATIVE.
7. PLEASE REFER TO THE LATEST EDITION OF THE MCI OSP HANDBOOK FOR ADDITIONAL DETAILS. KNOW IT AND FOLLOW IT.

MCI OUTSIDE PLANT CONSTRUCTION GENERAL REQUIREMENTS

1. ALL FEDERAL, STATE AND LOCAL SAFETY REGULATIONS MUST BE FOLLOWED WITHOUT EXCEPTION.
2. PERSONAL PROTECTIVE EQUIPMENT APPROPRIATE FOR THE SPECIFIC WORK SITE SHALL BE USED AT ALL TIMES. AT A MINIMUM, HARD HAT, SAFETY SHOES/STEEL-TOED BOOTS, AND FLORESCENT ORANGE OR GREEN WORK VEST ARE REQUIRED UPON ENTERING ANY MCI WORK SITE.
3. USE OF INTOXICANTS, DRUGS, INHALANTS OR ANY OTHER SUBSTANCES THAT MAY IMPAIR ALERTNESS ARE STRICTLY PROHIBITED.
4. CONTRACTORS ARE NOT ALLOWED TO CUT ANY CABLE. CABLES SCHEDULED FOR REMOVAL WILL BE CUT BY MCI OPERATIONS PERSONNEL, AND ONLY AFTER VERIFICATION THAT ALL TRAFFIC HAS BEEN OFF-LOADED.
5. EXTREME CAUTION MUST BE USED AT ALL TIMES WHEN WORKING ON OR NEAR ACTIVE CABLES. AN MCI EMPLOYEE OR CONTRACT REPRESENTATIVE MUST APPROVE AND BE PRESENT PRIOR TO AND DURING ALL CABLE HANDLING ACTIVITIES.
6. TOOLS AND EQUIPMENT SPECIFICALLY DESIGNED FOR THE JOB AT HAND ARE REQUIRED. USE THE PROPER TOOL FOR THE JOB.
7. CONDUIT WORK INVOLVING ACTIVE CABLES REQUIRES SPECIALIZED TOOLS SPECIFICALLY DESIGNED TO ACCESS DUCTS WITH ACTIVE CABLES.
8. PROTECTING MCI FACILITIES IS EXTREMELY IMPORTANT; HOWEVER, SAFETY REGARDING YOURSELF AND OTHERS IS THE MOST IMPORTANT PART OF ANY PROJECT.



SHEET NOT VALID UNLESS THIS TEXT IS COLOR.

PROJECT

**2502AIUW_MIN
DUNKIRK SC1_3**

8000 LAWDALE LN N
MAPLE GROVE MINNESOTA

REVISION SCHEDULE		
DATE	DESCRIPTION	BY

PROJECT NO.	25-32304
FILE NAME	32304 - TITLE
DRAWN BY	SS
DESIGNED BY	SS
REVIEWED BY	KV
ORIGINAL ISSUE DATE	03/11/2025
CLIENT PROJECT NO.	2502AIUW

TITLE

GENERAL NOTES

- PAGE INTENDED TO BE BLANK PRIOR TO CONSTRUCTION -



SHEET NOT VALID UNLESS THIS TEXT IS COLOR.

PROJECT

**2502AIUW_MIN
DUNKIRK SC1_3**

8000 LAWDALE LN N
MAPLE GROVE MINNESOTA

REVISION SCHEDULE		
DATE	DESCRIPTION	BY

PROJECT NO.	25-32304
FILE NAME	32304 - TITLE
DRAWN BY	SS
DESIGNED BY	SS
REVIEWED BY	KV
ORIGINAL ISSUE DATE	03/11/2025
CLIENT PROJECT NO.	2502AIUW

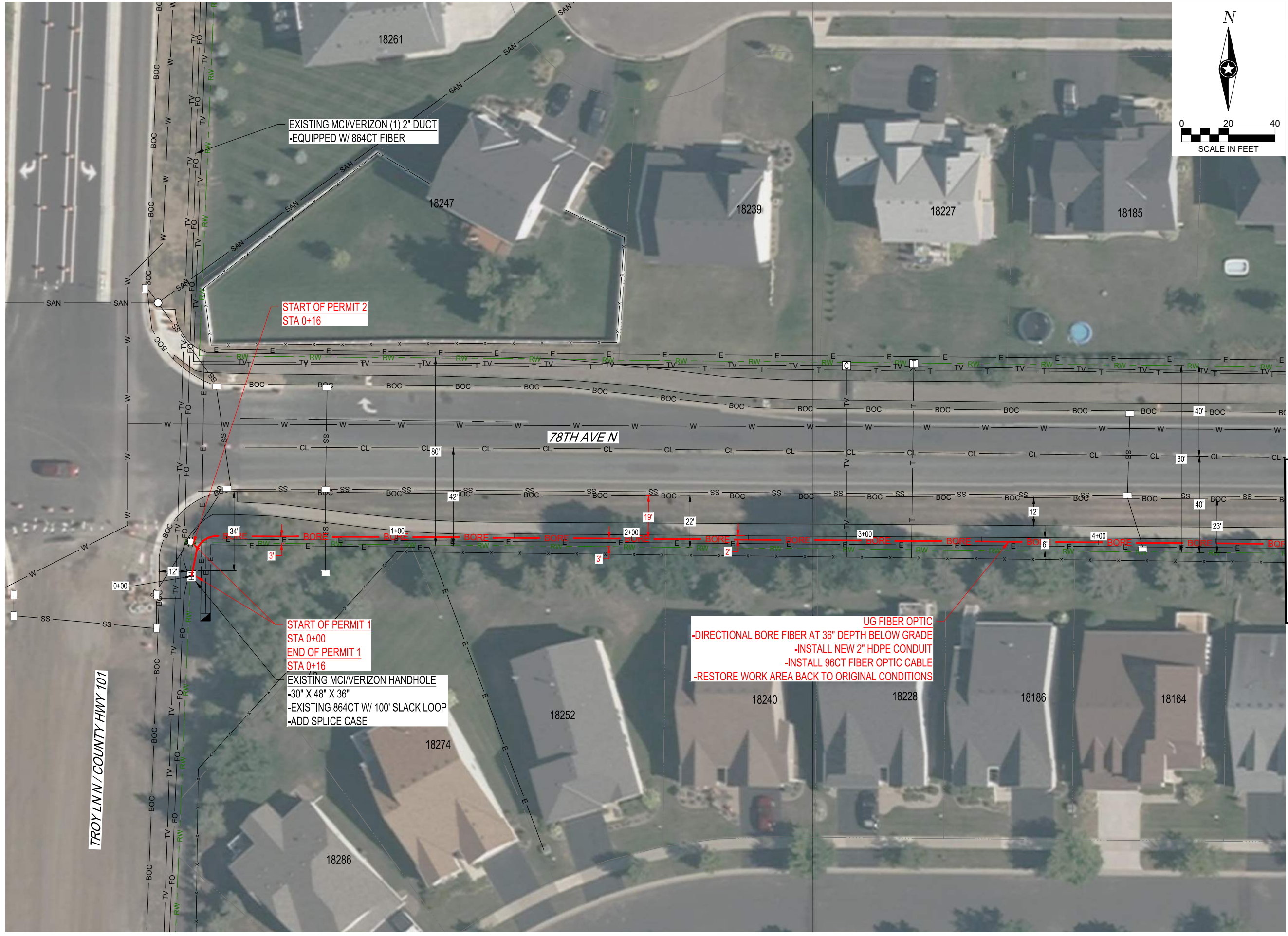
TITLE

BOM

SHEET

5

OF 12



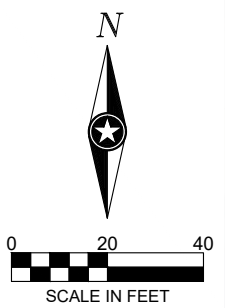
EXISTING MCI/VERIZON (1) 2" DUCT
-EQUIPPED W/ 864CT FIBER

START OF PERMIT 2
STA 0+16

START OF PERMIT 1
STA 0+00
END OF PERMIT 1
STA 0+16

EXISTING MCI/VERIZON HANDHOLE
-30" X 48" X 36"
-EXISTING 864CT W/ 100' SLACK LOOP
-ADD SPLICE CASE

UG FIBER OPTIC
-DIRECTIONAL BORE FIBER AT 36" DEPTH BELOW GRADE
-INSTALL NEW 2" HDPE CONDUIT
-INSTALL 96CT FIBER OPTIC CABLE
-RESTORE WORK AREA BACK TO ORIGINAL CONDITIONS



SHEET NOT VALID UNLESS THIS TEXT IS COLOR.

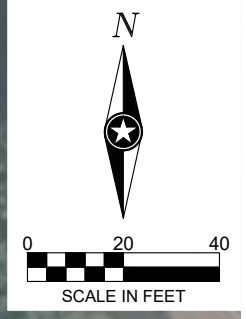
PROJECT
**2502AIUW_MIN
DUNKIRK SC1_3**
8000 LAWDALE LN N
MAPLE GROVE MINNESOTA

REVISION SCHEDULE		
DATE	DESCRIPTION	BY

PROJECT NO. 25-32304
FILE NAME 32304 - SHEETS
DRAWN BY SS
DESIGNED BY SS
REVIEWED BY KV
ORIGINAL ISSUE DATE 03/11/2025
CLIENT PROJECT NO. 2502AIUW

TITLE
PLAN SHEET

SHEET
6 OF 12



SHEET NOT VALID UNLESS THIS TEXT IS COLOR.

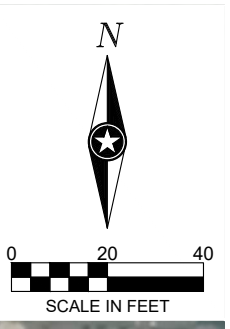
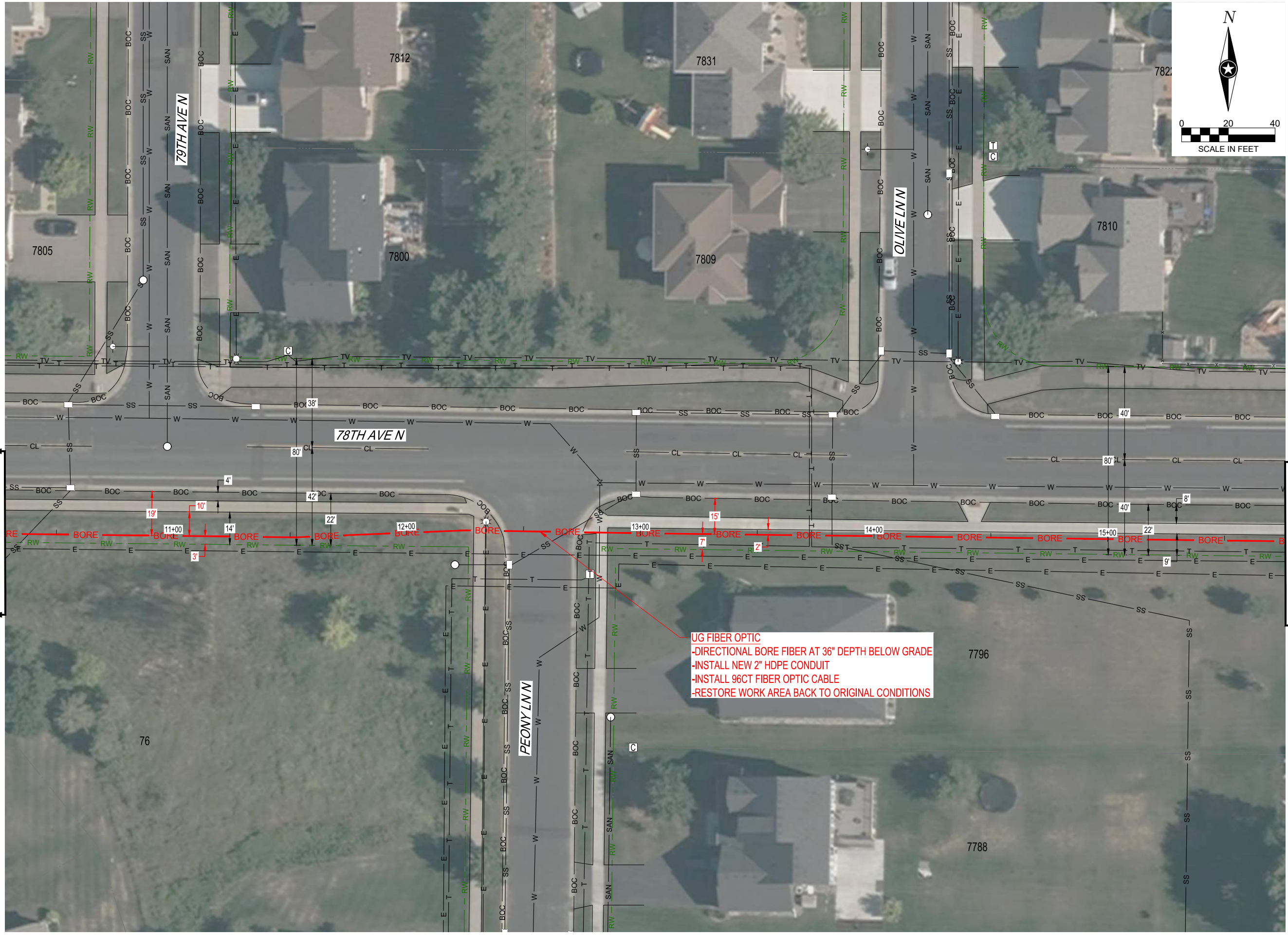
PROJECT
**2502AIUW_MIN
 DUNKIRK SC1_3**
8000 LAWDALE LN N
 MAPLE GROVE MINNESOTA

REVISION SCHEDULE		
DATE	DESCRIPTION	BY

PROJECT NO. 25-32304
 FILE NAME 32304 - SHEETS
 DRAWN BY SS
 DESIGNED BY SS
 REVIEWED BY KV
 ORIGINAL ISSUE DATE 03/11/2025
 CLIENT PROJECT NO. 2502AIUW

TITLE
PLAN SHEET

SHEET
7 OF 12



SHEET NOT VALID UNLESS THIS TEXT IS COLOR.

PROJECT
**2502AIUW_MIN
 DUNKIRK SC1_3**
8000 LAWDALE LN N
 MAPLE GROVE MINNESOTA

REVISION SCHEDULE		
DATE	DESCRIPTION	BY

PROJECT NO. 25-32304
 FILE NAME 32304 - SHEETS
 DRAWN BY SS
 DESIGNED BY SS
 REVIEWED BY KV
 ORIGINAL ISSUE DATE 03/11/2025
 CLIENT PROJECT NO. 2502AIUW

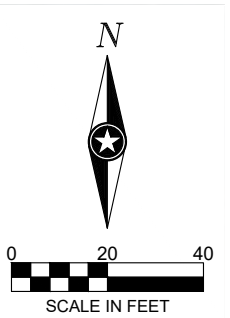
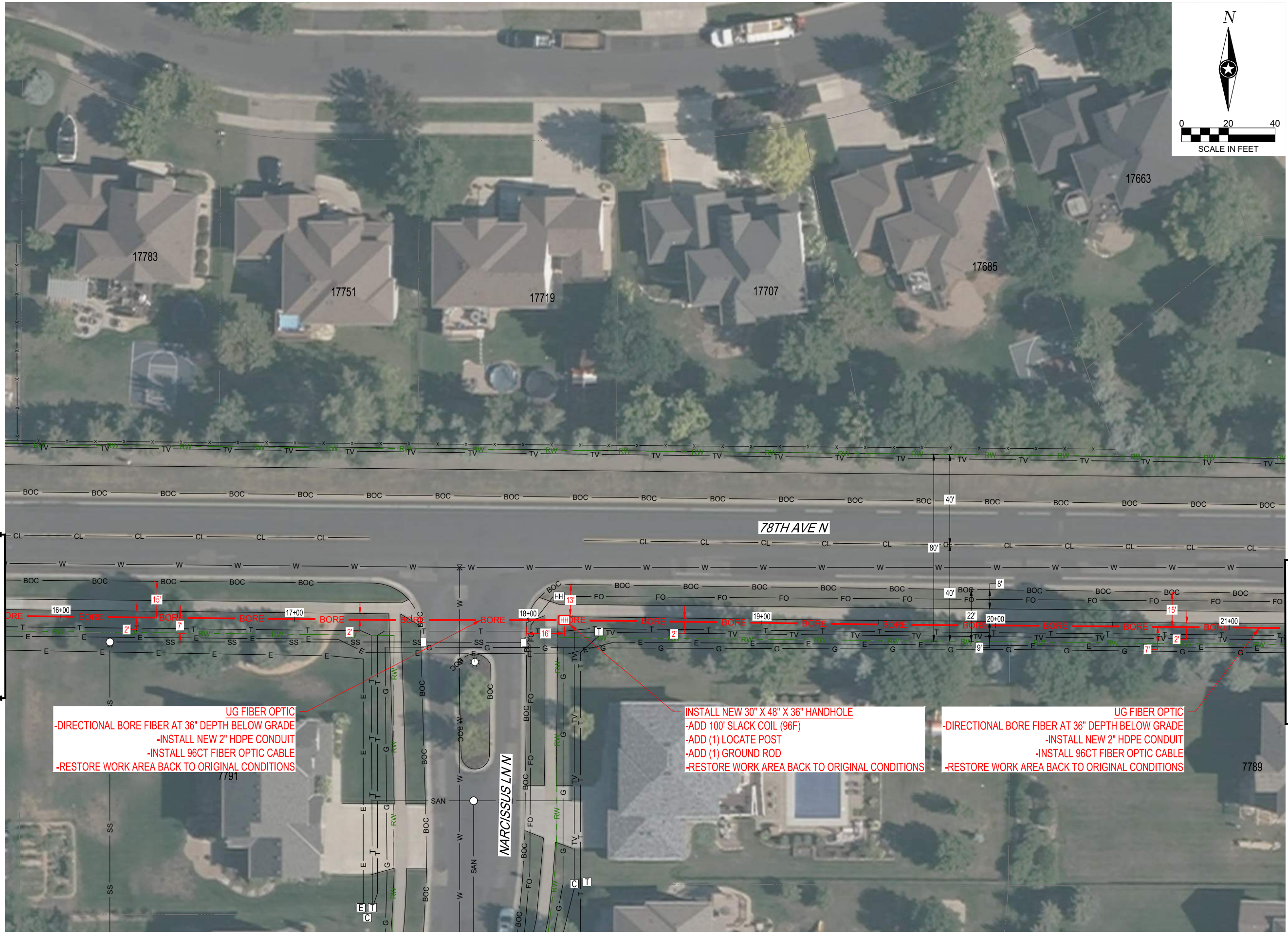
TITLE
PLAN SHEET

SHEET
8 OF 12

UG FIBER OPTIC
 -DIRECTIONAL BORE FIBER AT 36" DEPTH BELOW GRADE
 -INSTALL NEW 2" HDPE CONDUIT
 -INSTALL 96CT FIBER OPTIC CABLE
 -RESTORE WORK AREA BACK TO ORIGINAL CONDITIONS

TO SHEET 7

TO SHEET 9



SHEET NOT VALID UNLESS THIS TEXT IS COLOR.

PROJECT
**2502AIUW_MIN
 DUNKIRK SC1_3**
8000 LAWDALE LN N
 MAPLE GROVE MINNESOTA

REVISION SCHEDULE		
DATE	DESCRIPTION	BY

PROJECT NO. 25-32304
 FILE NAME 32304 - SHEETS
 DRAWN BY SS
 DESIGNED BY SS
 REVIEWED BY KV
 ORIGINAL ISSUE DATE 03/11/2025
 CLIENT PROJECT NO. 2502AIUW

TITLE
PLAN SHEET

SHEET
9 OF 12

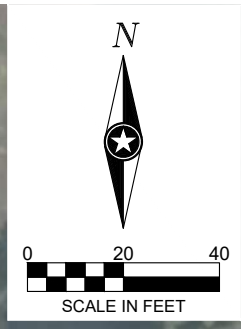
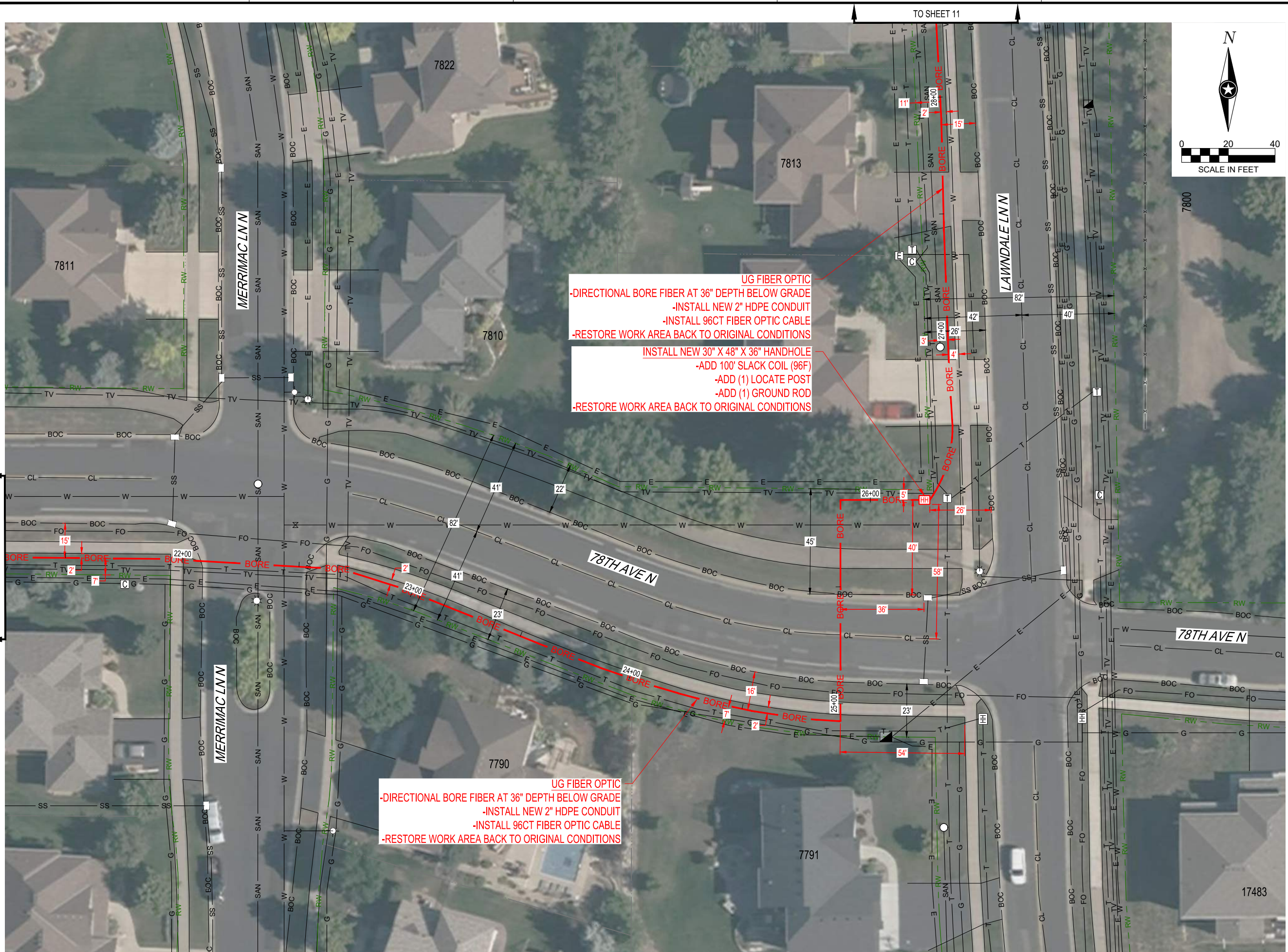
UG FIBER OPTIC
 -DIRECTIONAL BORE FIBER AT 36" DEPTH BELOW GRADE
 -INSTALL NEW 2" HDPE CONDUIT
 -INSTALL 96CT FIBER OPTIC CABLE
 -RESTORE WORK AREA BACK TO ORIGINAL CONDITIONS

INSTALL NEW 30" X 48" X 36" HANDHOLE
 -ADD 100' SLACK COIL (96F)
 -ADD (1) LOCATE POST
 -ADD (1) GROUND ROD
 -RESTORE WORK AREA BACK TO ORIGINAL CONDITIONS

UG FIBER OPTIC
 -DIRECTIONAL BORE FIBER AT 36" DEPTH BELOW GRADE
 -INSTALL NEW 2" HDPE CONDUIT
 -INSTALL 96CT FIBER OPTIC CABLE
 -RESTORE WORK AREA BACK TO ORIGINAL CONDITIONS

TO SHEET 8

TO SHEET 10



SHEET NOT VALID UNLESS THIS TEXT IS COLOR.

PROJECT

**2502AIUW_MIN
DUNKIRK SC1_3**

8000 LAWDALE LN N

MAPLE GROVE MINNESOTA

REVISION SCHEDULE		
DATE	DESCRIPTION	BY

PROJECT NO.	25-32304
FILE NAME	32304 - SHEETS
DRAWN BY	SS
DESIGNED BY	SS
REVIEWED BY	KV
ORIGINAL ISSUE DATE	03/11/2025
CLIENT PROJECT NO.	2502AIUW

TITLE

PLAN SHEET

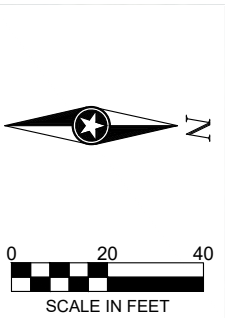
SHEET

10

OF 12



UG FIBER OPTIC
 -DIRECTIONAL BORE FIBER AT 36" DEPTH BELOW GRADE
 -INSTALL NEW 2" HDPE CONDUIT
 -INSTALL 96CT FIBER OPTIC CABLE
 -RESTORE WORK AREA BACK TO ORIGINAL CONDITIONS



SHEET NOT VALID UNLESS THIS TEXT IS COLOR.

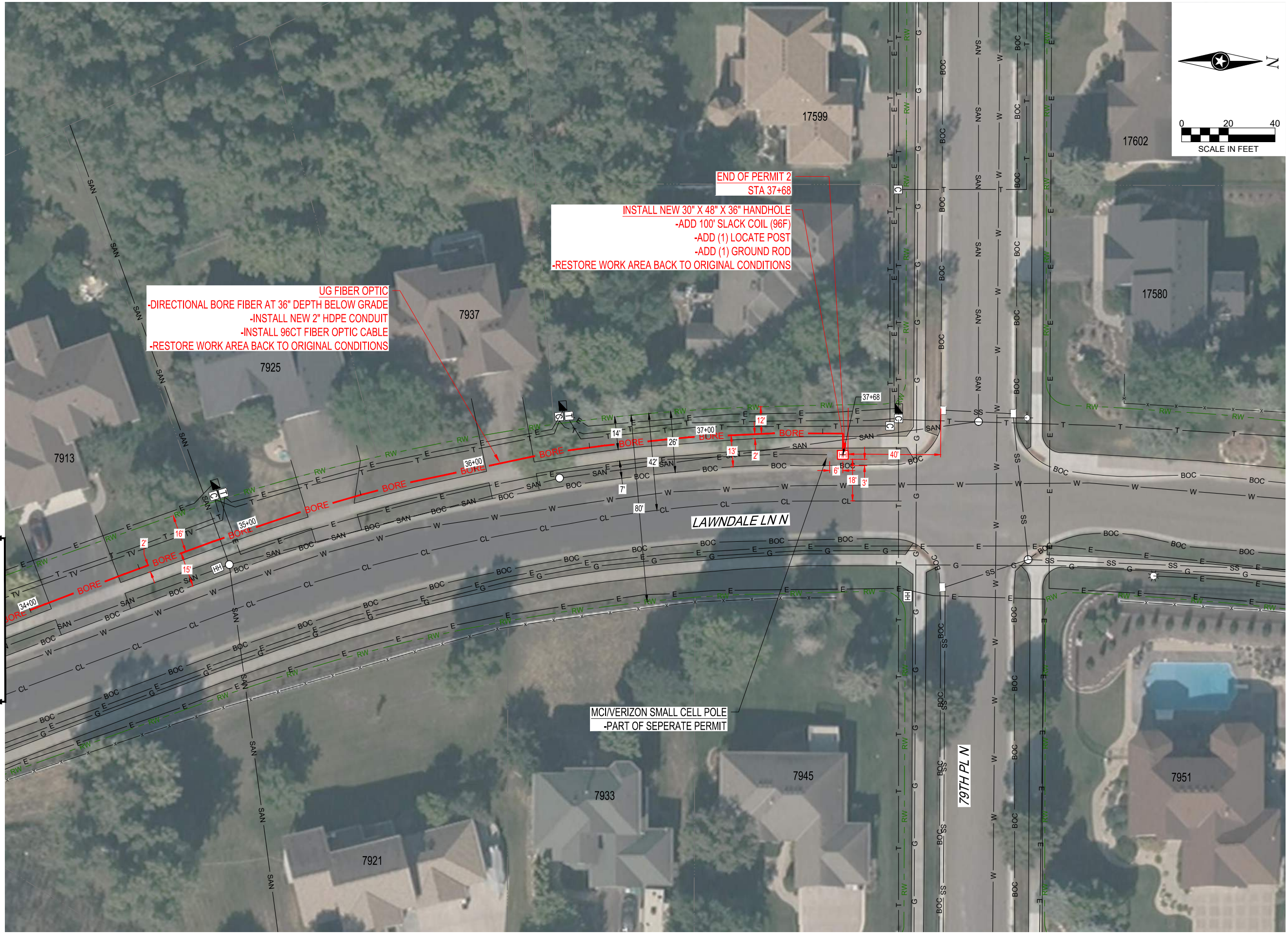
PROJECT
**2502AIUW_MIN
 DUNKIRK SC1_3**
8000 LAWDALE LN N
 MAPLE GROVE MINNESOTA

REVISION SCHEDULE		
DATE	DESCRIPTION	BY

PROJECT NO. 25-32304
 FILE NAME 32304 - SHEETS
 DRAWN BY SS
 DESIGNED BY SS
 REVIEWED BY KV
 ORIGINAL ISSUE DATE 03/11/2025
 CLIENT PROJECT NO. 2502AIUW

TITLE
PLAN SHEET

SHEET
11 OF 12



UG FIBER OPTIC
 -DIRECTIONAL BORE FIBER AT 36" DEPTH BELOW GRADE
 -INSTALL NEW 2" HDPE CONDUIT
 -INSTALL 96CT FIBER OPTIC CABLE
 -RESTORE WORK AREA BACK TO ORIGINAL CONDITIONS

END OF PERMIT 2
 STA 37+68
 INSTALL NEW 30" X 48" X 36" HANDHOLE
 -ADD 100' SLACK COIL (96F)
 -ADD (1) LOCATE POST
 -ADD (1) GROUND ROD
 -RESTORE WORK AREA BACK TO ORIGINAL CONDITIONS

MCI/VERIZON SMALL CELL POLE
 -PART OF SEPERATE PERMIT



SHEET NOT VALID UNLESS THIS TEXT IS COLOR.

PROJECT
**2502AIUW_MIN
 DUNKIRK SC1_3**
8000 LAWNDALE LN N
 MAPLE GROVE MINNESOTA

REVISION SCHEDULE		
DATE	DESCRIPTION	BY

PROJECT NO. 25-32304
 FILE NAME 32304 - SHEETS
 DRAWN BY SS
 DESIGNED BY SS
 REVIEWED BY KV
 ORIGINAL ISSUE DATE 03/11/2025
 CLIENT PROJECT NO. 2502AIUW

TITLE
PLAN SHEET

SHEET
12 OF 12