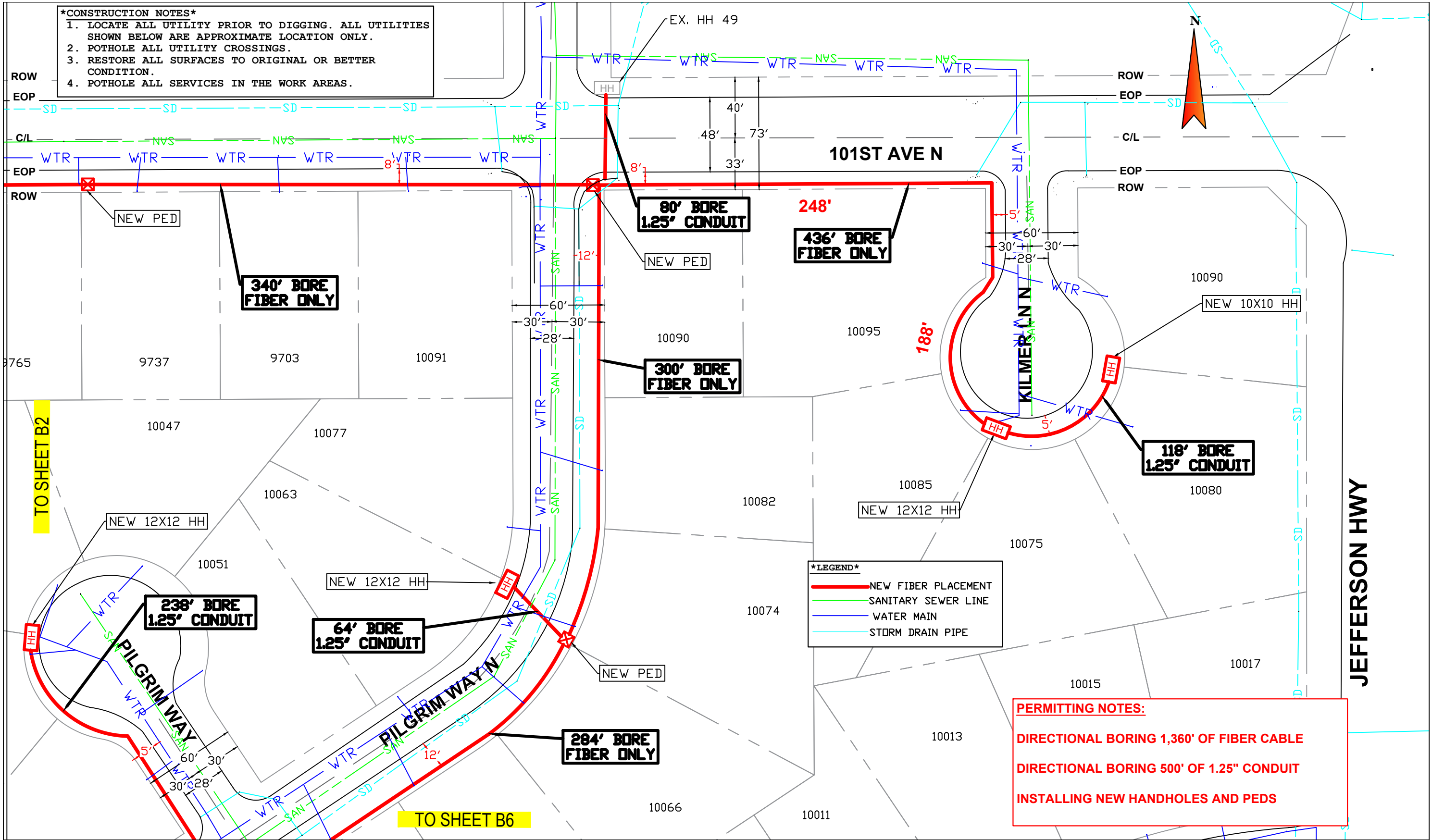


**\*CONSTRUCTION NOTES\***  
1. LOCATE ALL UTILITY PRIOR TO DIGGING. ALL UTILITIES SHOWN BELOW ARE APPROXIMATE LOCATION ONLY.  
2. POT HOLE ALL UTILITY CROSSINGS.  
3. RESTORE ALL SURFACES TO ORIGINAL OR BETTER CONDITION.  
4. POT HOLE ALL SERVICES IN THE WORK AREAS.



**\*LEGEND\***  
— NEW FIBER PLACEMENT  
— SANITARY SEWER LINE  
— WATER MAIN  
— STORM DRAIN PIPE

**PERMITTING NOTES:**  
DIRECTIONAL BORING 1,360' OF FIBER CABLE  
DIRECTIONAL BORING 500' OF 1.25" CONDUIT  
INSTALLING NEW HANDHOLES AND PEDS

**LUMEN®**  
301 W 65TH ST  
RICHFIELD, MN 55423

ENGINEER: JEFF GILBERT  
PHONE: 651-378-2633  
FAX:  
EMAIL: JEFFREY.GILBERT@LUMEN.COM

WC: OSSEMNXD  
JOB: P.112927 - B1

**DRAWING SYMBOLS**  
THE SUBSURFACE UTILITY INFORMATION IN THIS PLAN IS QUALITY LEVEL D. THIS QUALITY LEVEL WAS DETERMINED ACCORDING TO THE GUIDELINES FOR THE COLLECTION AND DEPICTION OF EXISTING SUBSURFACE UTILITY DATA

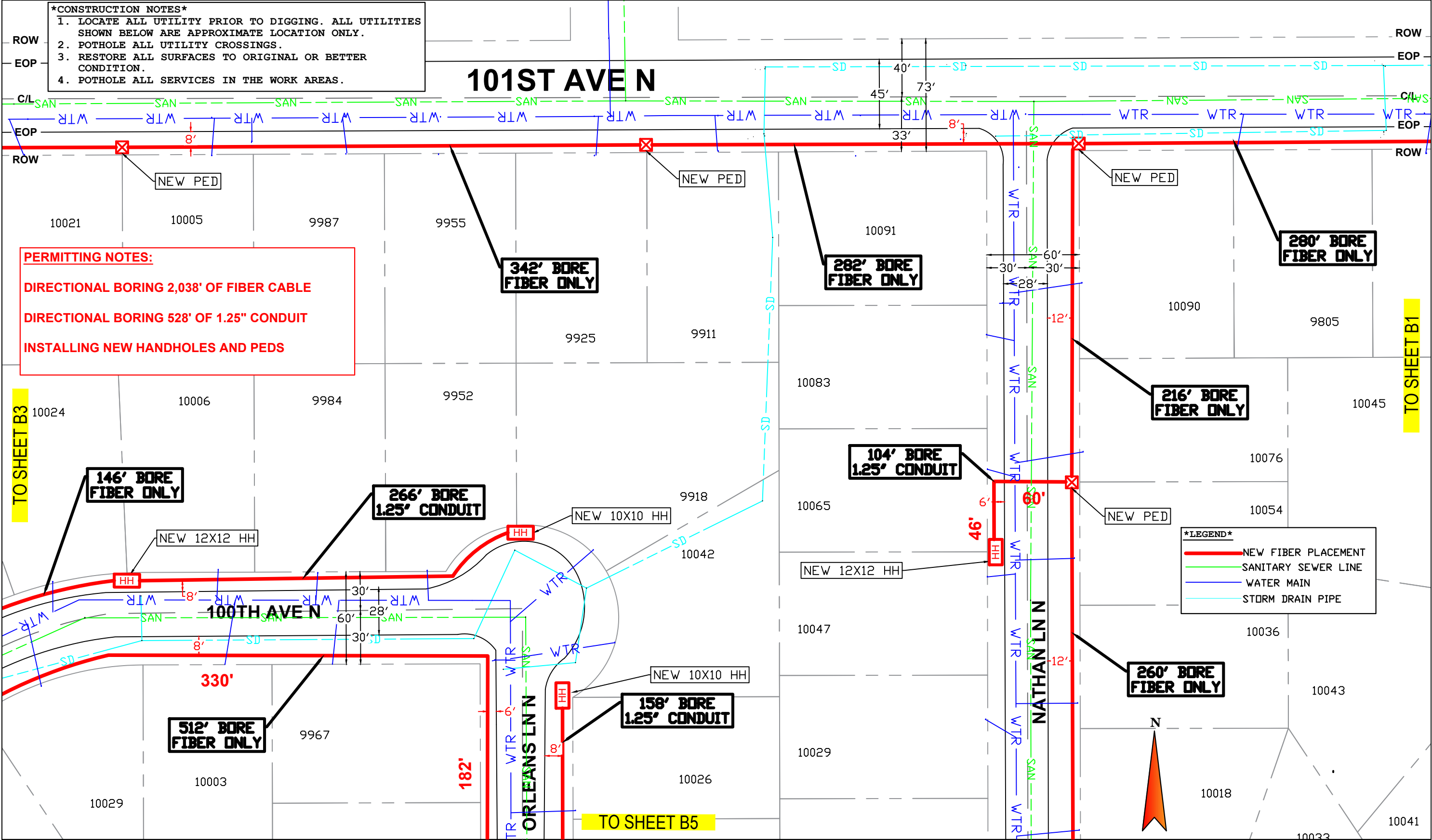


NO SCALE  
**SHEET: 1 OF 13**

**\*CONSTRUCTION NOTES\***  
1. LOCATE ALL UTILITY PRIOR TO DIGGING. ALL UTILITIES SHOWN BELOW ARE APPROXIMATE LOCATION ONLY.  
2. POT HOLE ALL UTILITY CROSSINGS.  
3. RESTORE ALL SURFACES TO ORIGINAL OR BETTER CONDITION.  
4. POT HOLE ALL SERVICES IN THE WORK AREAS.

**PERMITTING NOTES:**  
DIRECTIONAL BORING 2,038' OF FIBER CABLE  
DIRECTIONAL BORING 528' OF 1.25" CONDUIT  
INSTALLING NEW HANDHOLES AND PEDS

**\*LEGEND\***  
NEW FIBER PLACEMENT  
SANITARY SEWER LINE  
WATER MAIN  
STORM DRAIN PIPE



**LUMEN®**  
301 W 65TH ST  
RICHFIELD, MN 55423

ENGINEER: JEFF GILBERT  
PHONE: 651-378-2633  
FAX:  
EMAIL: JEFFREY.GILBERT@LUMEN.COM

WC: OSSEMNXD  
JOB: P.112927 - B2

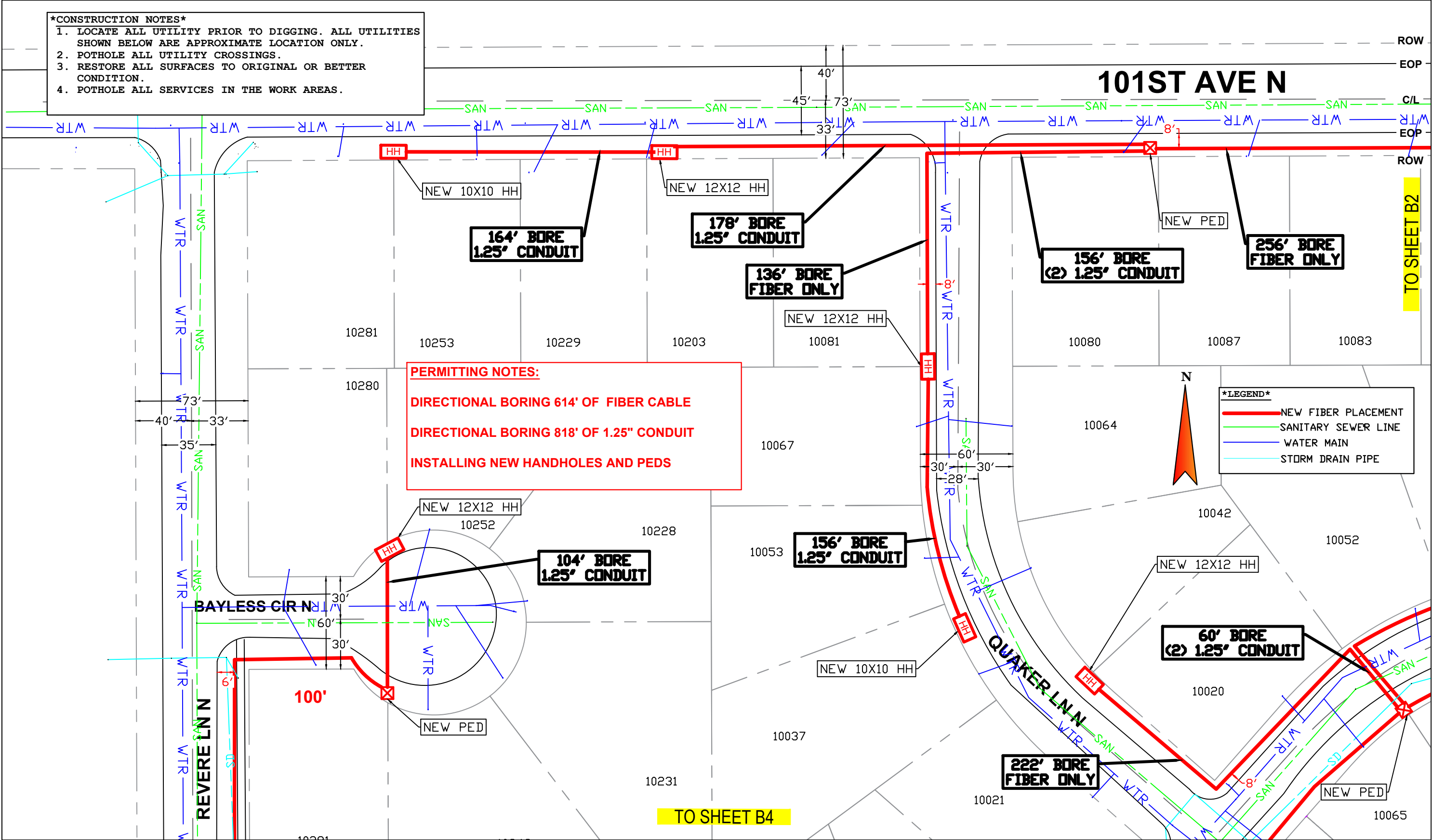
DRAWING SYMBOLS  
THE SUBSURFACE UTILITY INFORMATION IN THIS PLAN IS QUALITY LEVEL D. THIS QUALITY LEVEL WAS DETERMINED ACCORDING TO THE GUIDELINES FOR THE COLLECTION AND DEPICTION OF EXISTING SUBSURFACE UTILITY DATA



NO SCALE  
SHEET: 2 OF 13

**\*CONSTRUCTION NOTES\***

1. LOCATE ALL UTILITY PRIOR TO DIGGING. ALL UTILITIES SHOWN BELOW ARE APPROXIMATE LOCATION ONLY.
2. POTHOLE ALL UTILITY CROSSINGS.
3. RESTORE ALL SURFACES TO ORIGINAL OR BETTER CONDITION.
4. POTHOLE ALL SERVICES IN THE WORK AREAS.



**PERMITTING NOTES:**  
DIRECTIONAL BORING 614' OF FIBER CABLE  
DIRECTIONAL BORING 818' OF 1.25" CONDUIT  
INSTALLING NEW HANDHOLES AND PEDS

**\*LEGEND\***

- NEW FIBER PLACEMENT
- SANITARY SEWER LINE
- WATER MAIN
- STORM DRAIN PIPE

**LUMEN®**  
301 W 65TH ST  
RICHFIELD, MN 55423

ENGINEER: JEFF GILBERT  
PHONE: 651-378-2633  
FAX:  
EMAIL: JEFFREY.GILBERT@LUMEN.COM

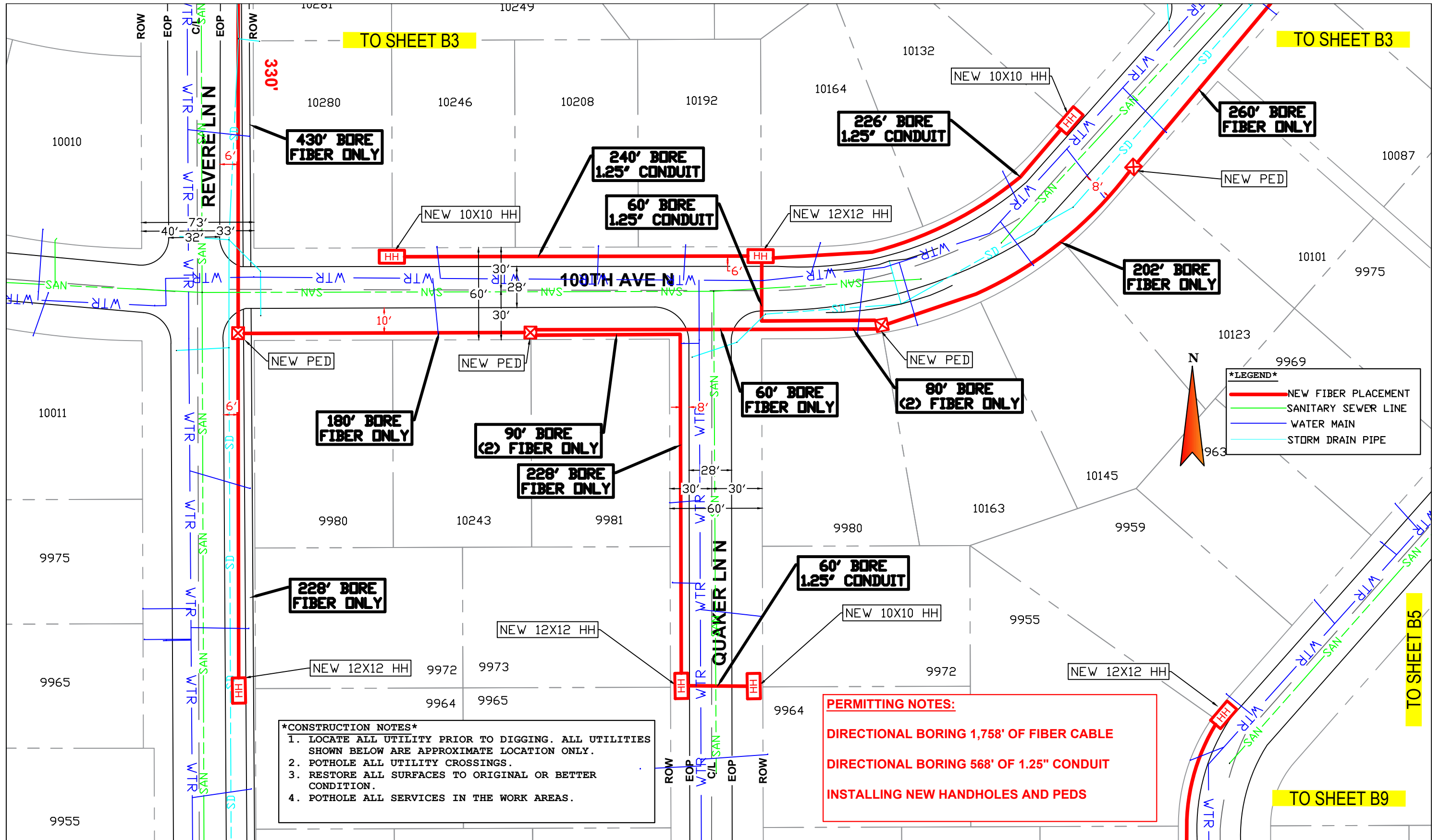
WC: OSSEMNXD  
JOB: P.112927 - B3

DRAWING SYMBOLS

THE SUBSURFACE UTILITY INFORMATION IN THIS PLAN IS QUALITY LEVEL D. THIS QUALITY LEVEL WAS DETERMINED ACCORDING TO THE GUIDELINES FOR THE COLLECTION AND DEPICTION OF EXISTING SUBSURFACE UTILITY DATA



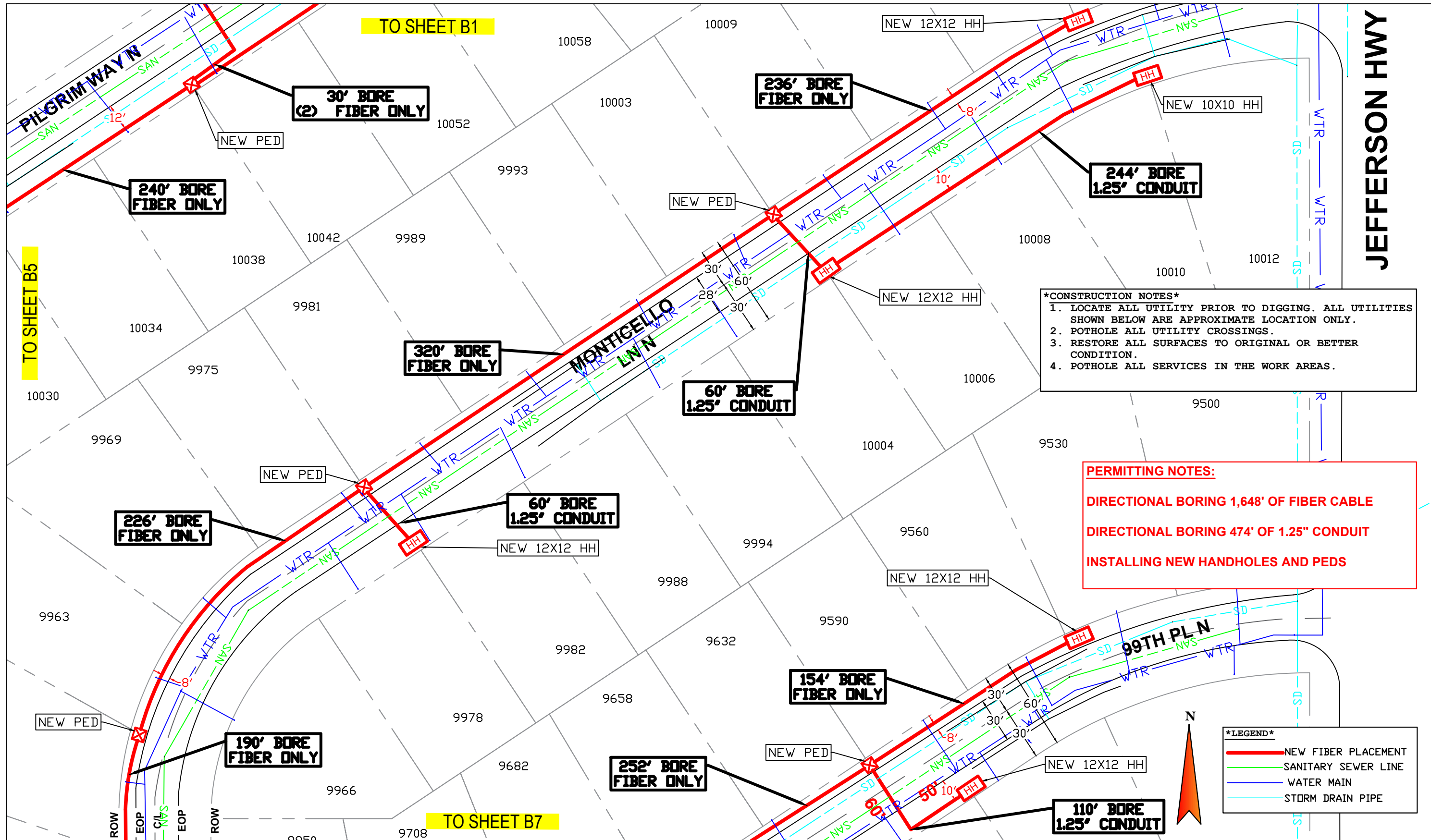
NO SCALE  
SHEET: 3 OF 13



**\*CONSTRUCTION NOTES\***  
1. LOCATE ALL UTILITY PRIOR TO DIGGING. ALL UTILITIES SHOWN BELOW ARE APPROXIMATE LOCATION ONLY.  
2. POT HOLE ALL UTILITY CROSSINGS.  
3. RESTORE ALL SURFACES TO ORIGINAL OR BETTER CONDITION.  
4. POT HOLE ALL SERVICES IN THE WORK AREAS.

**PERMITTING NOTES:**  
DIRECTIONAL BORING 1,758' OF FIBER CABLE  
DIRECTIONAL BORING 568' OF 1.25" CONDUIT  
INSTALLING NEW HANDHOLES AND PEDS





**\*CONSTRUCTION NOTES\***

- 1. LOCATE ALL UTILITY PRIOR TO DIGGING. ALL UTILITIES SHOWN BELOW ARE APPROXIMATE LOCATION ONLY.
- 2. POTHOLE ALL UTILITY CROSSINGS.
- 3. RESTORE ALL SURFACES TO ORIGINAL OR BETTER CONDITION.
- 4. POTHOLE ALL SERVICES IN THE WORK AREAS.

**PERMITTING NOTES:**

DIRECTIONAL BORING 1,648' OF FIBER CABLE

DIRECTIONAL BORING 474' OF 1.25" CONDUIT

INSTALLING NEW HANDHOLES AND PEDS

*LEGEND*	
	NEW FIBER PLACEMENT
	SANITARY SEWER LINE
	WATER MAIN
	STORM DRAIN PIPE

**LUMEN®**  
301 W 65TH ST  
RICHFIELD, MN 55423

ENGINEER: JEFF GILBERT  
PHONE: 651-378-2633  
FAX:  
EMAIL: JEFFREY.GILBERT@LUMEN.COM

WC: OSSEMNXD  
JOB: P.112927 - B6

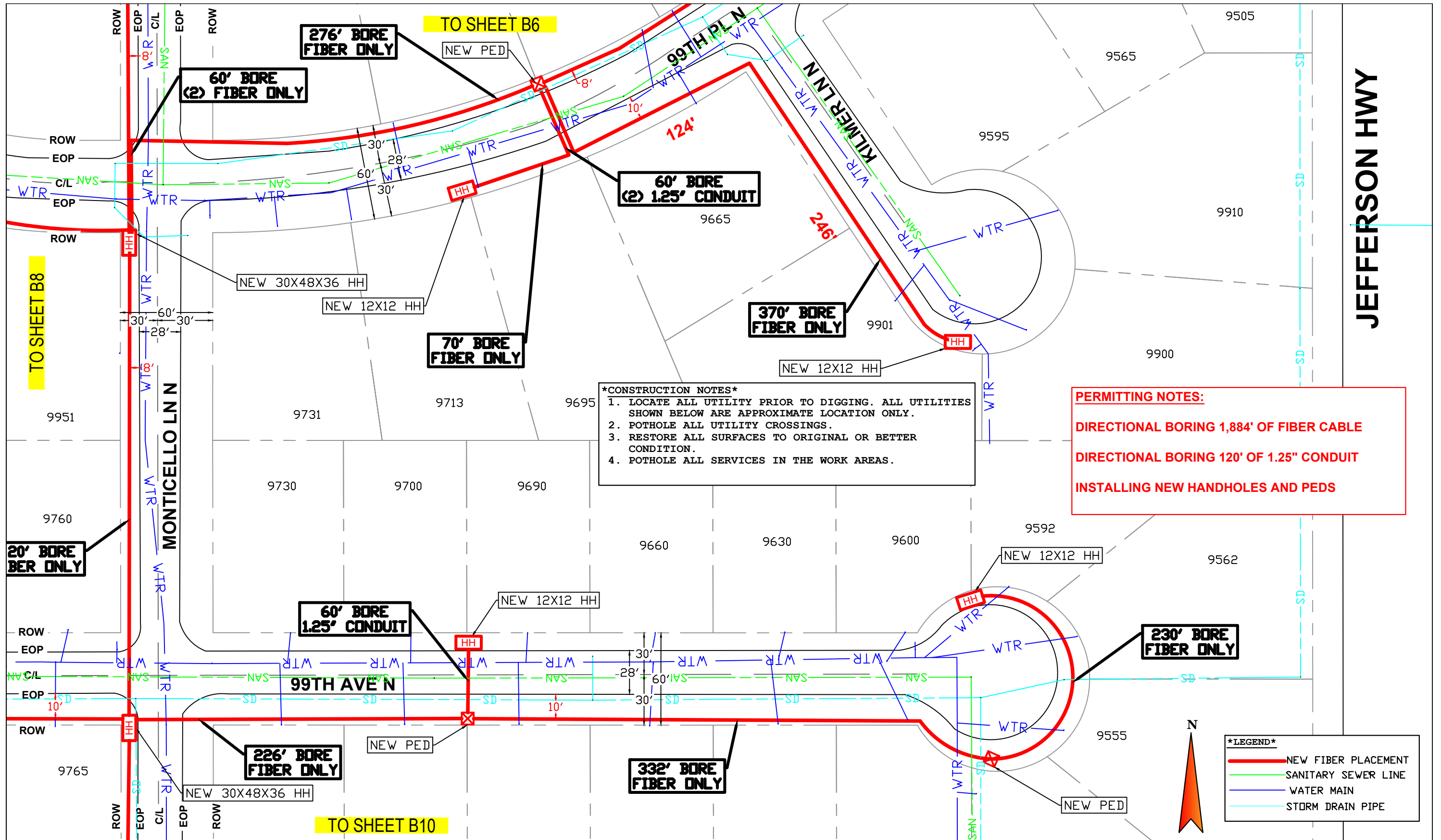
DRAWING SYMBOLS

THE SUBSURFACE UTILITY INFORMATION IN THIS PLAN IS QUALITY LEVEL D. THIS QUALITY LEVEL WAS DETERMINED ACCORDING TO THE GUIDELINES FOR THE COLLECTION AND DEPICTION OF EXISTING SUBSURFACE UTILITY DATA



NO SCALE

SHEET: 6 OF 13



**LUMEN®**

301 W 65TH ST  
RICHFIELD, MN 55423

ENGINEER: JEFF GILBERT  
PHONE: 651-378-2633  
FAX:  
EMAIL: JEFFREY.GILBERT@LUMEN.COM

WC: OSSEMNXD  
JOB: P.112927 - B7

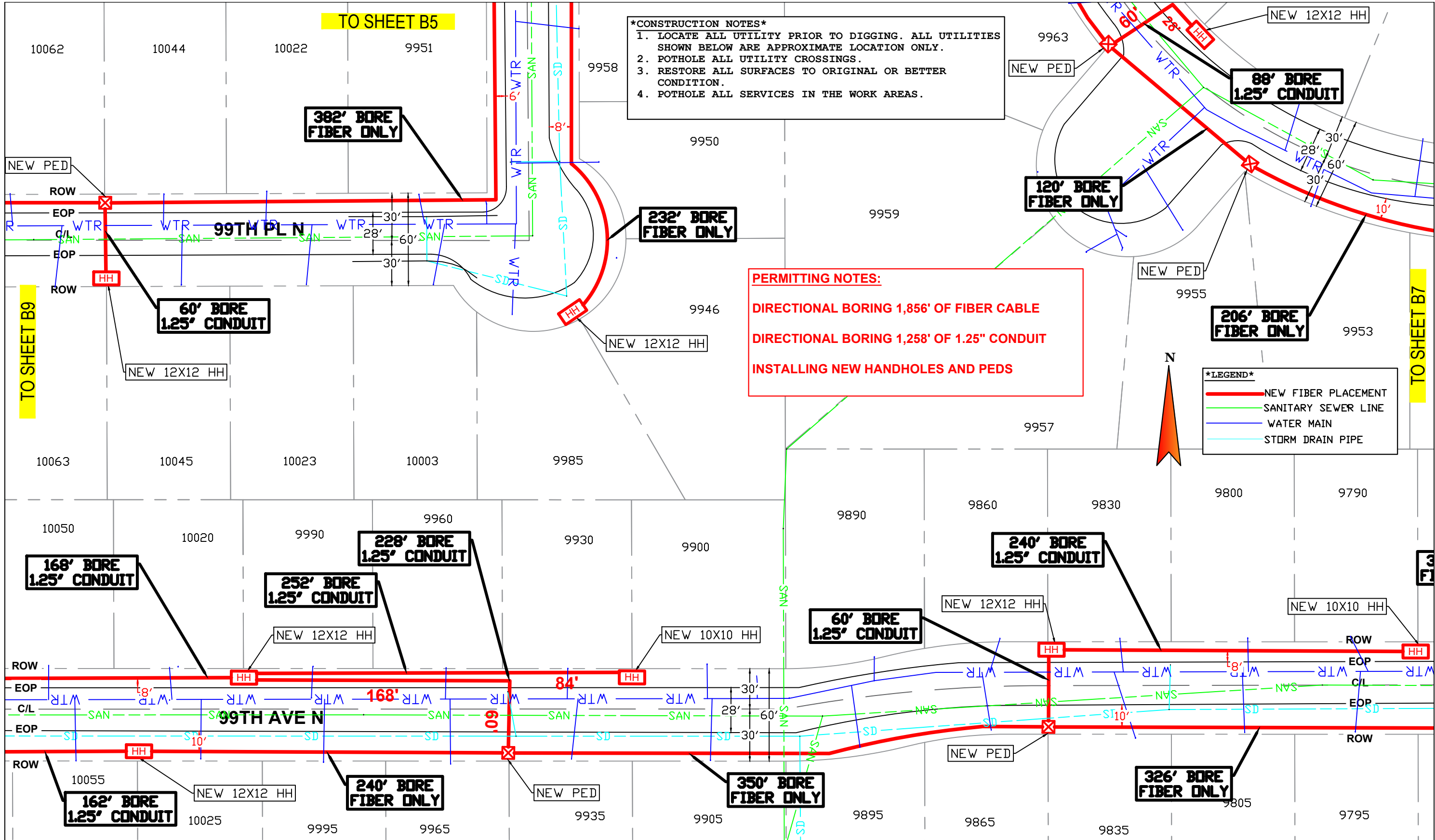
DRAWING SYMBOLS

THE SUBSURFACE UTILITY INFORMATION IN THIS PLAN IS QUALITY LEVEL D. THIS QUALITY LEVEL WAS DETERMINED ACCORDING TO THE GUIDELINES FOR THE COLLECTION AND DEPICTION OF EXISTING SUBSURFACE UTILITY DATA



NO SCALE

SHEET: 7 OF 13



**LUMEN®**

301 W 65TH ST  
RICHFIELD, MN 55423

ENGINEER: JEFF GILBERT  
PHONE: 651-378-2633  
FAX:  
EMAIL: JEFFREY.GILBERT@LUMEN.COM

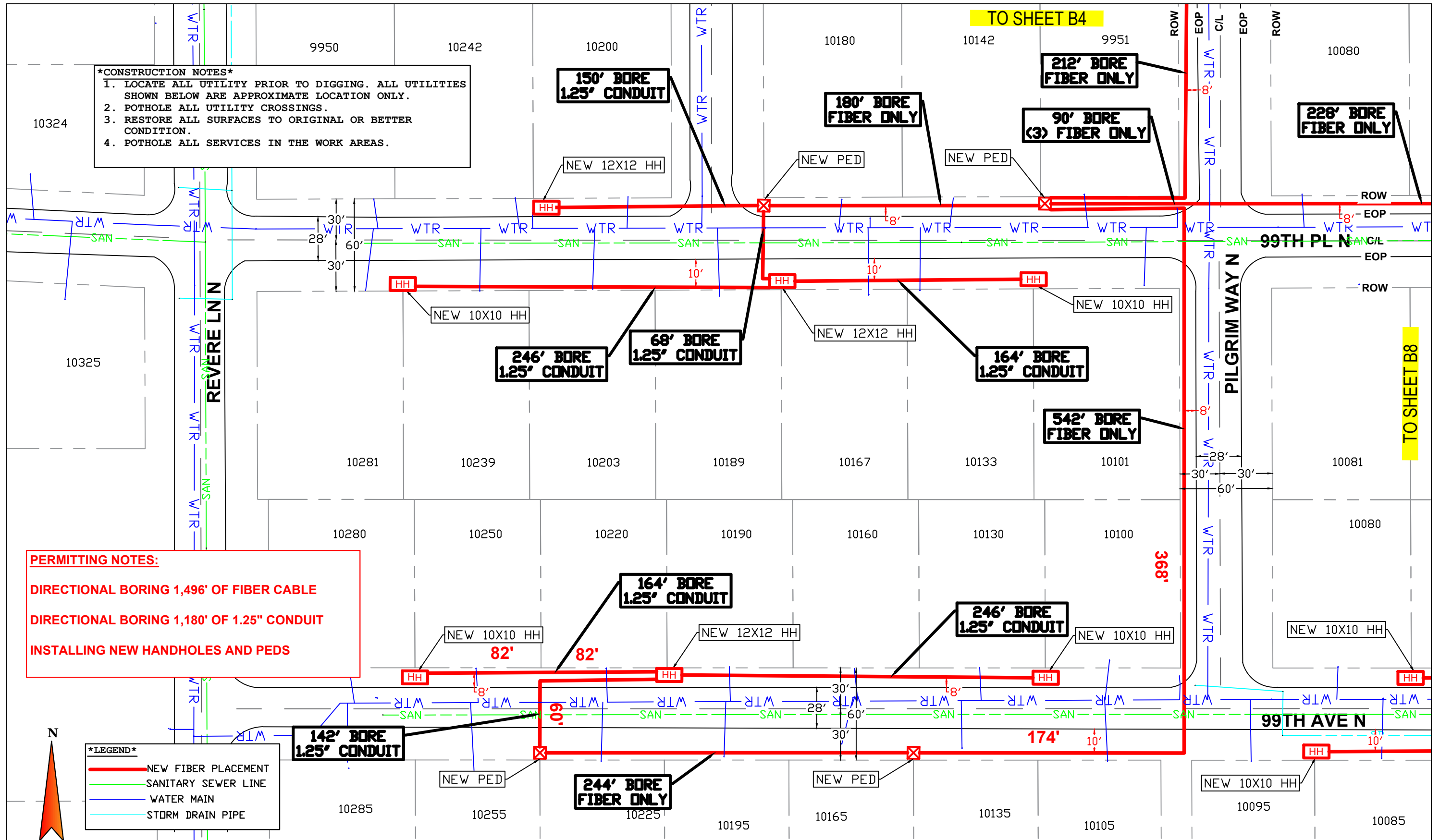
WC: OSSEMNXD  
JOB: P.112927 - B8

**DRAWING SYMBOLS**

THE SUBSURFACE UTILITY INFORMATION IN THIS PLAN IS QUALITY LEVEL D. THIS QUALITY LEVEL WAS DETERMINED ACCORDING TO THE GUIDELINES FOR THE COLLECTION AND DEPICTION OF EXISTING SUBSURFACE UTILITY DATA



NO SCALE



**LUMEN®**

301 W 65TH ST  
RICHFIELD, MN 55423

ENGINEER: JEFF GILBERT  
PHONE: 651-378-2633  
FAX:  
EMAIL: JEFFREY.GILBERT@LUMEN.COM

WC: OSSEMNXD  
JOB: P.112927 - B9

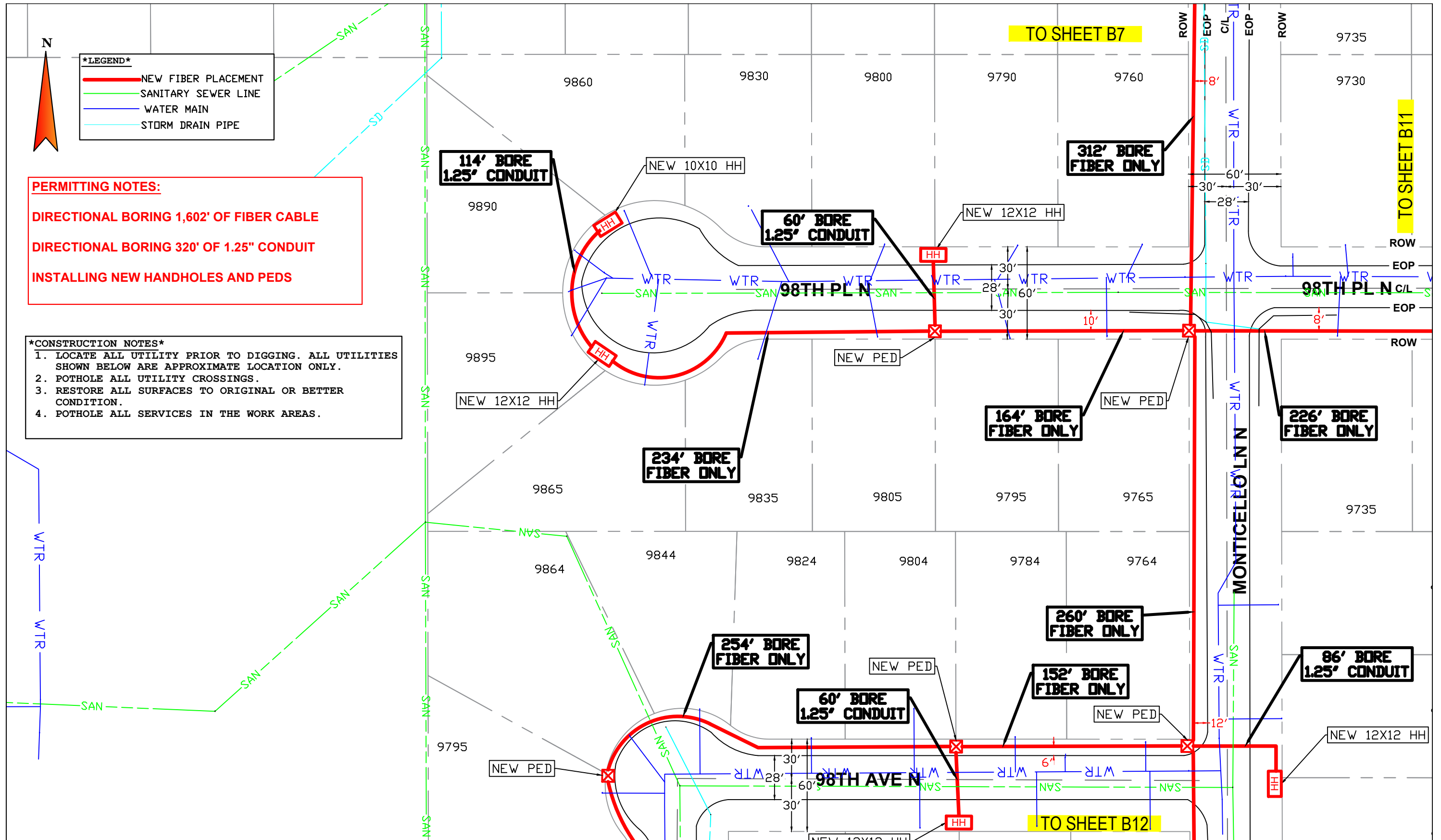
DRAWING SYMBOLS

THE SUBSURFACE UTILITY INFORMATION IN THIS PLAN IS QUALITY LEVEL D. THIS QUALITY LEVEL WAS DETERMINED ACCORDING TO THE GUIDELINES FOR THE COLLECTION AND DEPICTION OF EXISTING SUBSURFACE UTILITY DATA



NO SCALE

SHEET: 9 OF 13



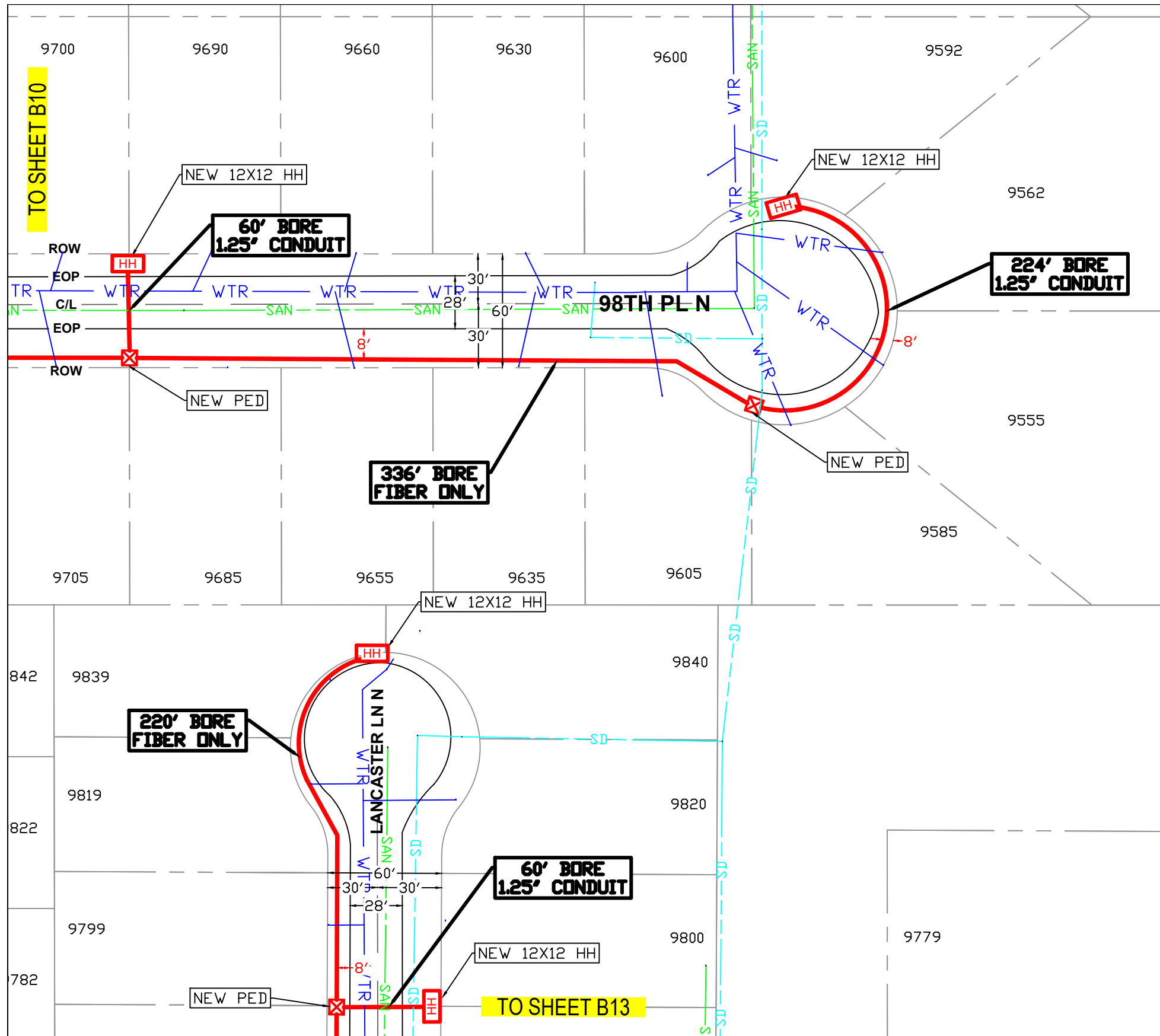
**LUMEN®**  
301 W 65TH ST  
RICHFIELD, MN 55423

ENGINEER: JEFF GILBERT  
PHONE: 651-378-2633  
FAX:  
EMAIL: JEFFREY.GILBERT@LUMEN.COM

WC: OSSEMNXD  
JOB: P.112927 - B10

**CREEK**  
ENTERPRISE, INC.

NO SCALE  
SHEET: 10 OF 13



**TO SHEET B10**

**TO SHEET B13**

**JEFFERSON HWY**

**PERMITTING NOTES:**

DIRECTIONAL BORING 556' OF FIBER CABLE

DIRECTIONAL BORING 344' OF 1.25" CONDUIT

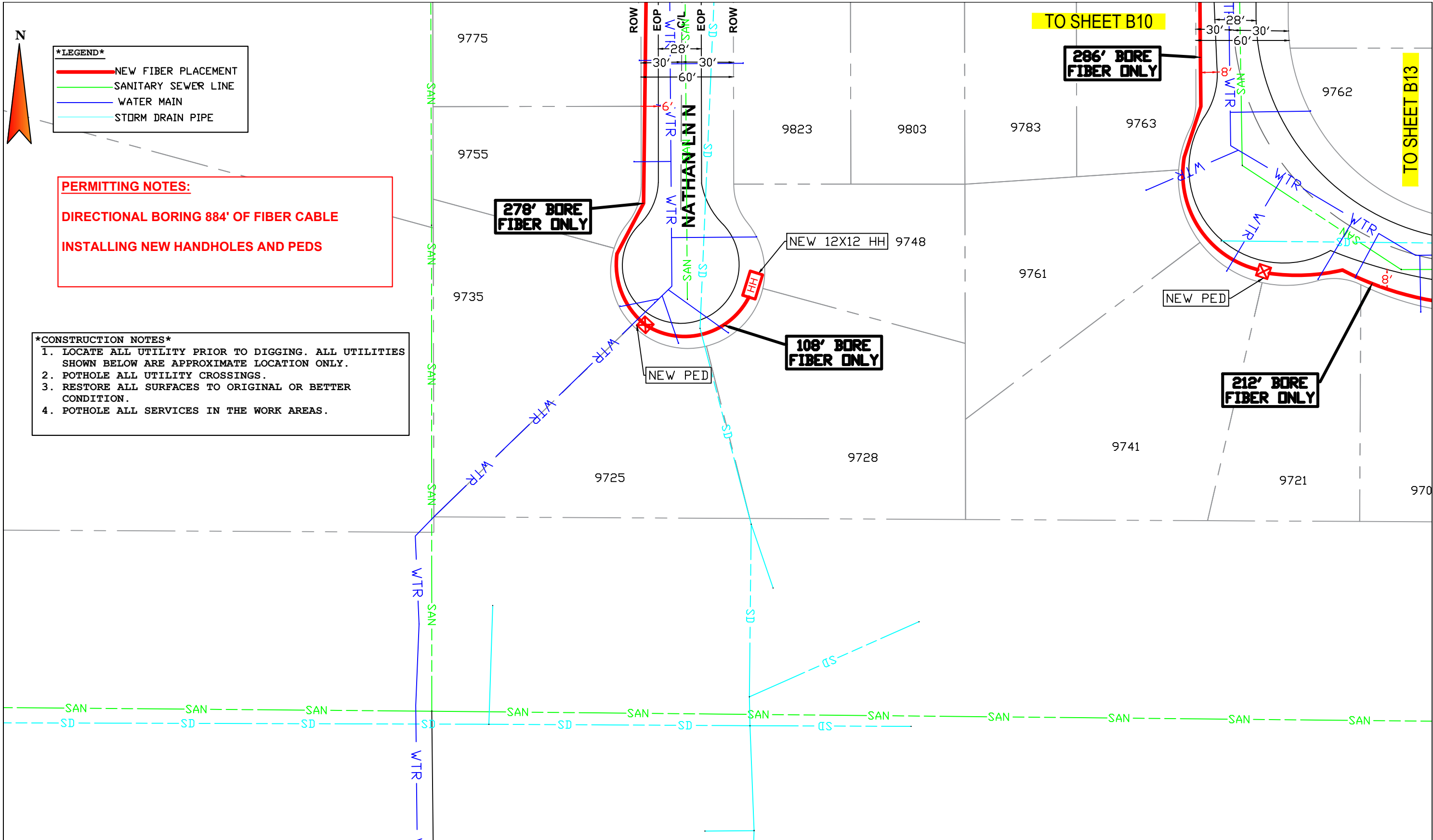
INSTALLING NEW HANDHOLES AND PEDS

**\*LEGEND\***

- NEW FIBER PLACEMENT
- SANITARY SEWER LINE
- WATER MAIN
- STORM DRAIN PIPE

**\*CONSTRUCTION NOTES\***

1. LOCATE ALL UTILITY PRIOR TO DIGGING. ALL UTILITIES SHOWN BELOW ARE APPROXIMATE LOCATION ONLY.
2. POT HOLE ALL UTILITY CROSSINGS.
3. RESTORE ALL SURFACES TO ORIGINAL OR BETTER CONDITION.
4. POT HOLE ALL SERVICES IN THE WORK AREAS.



**LUMEN®**  
301 W 65TH ST  
RICHFIELD, MN 55423

ENGINEER: JEFF GILBERT  
PHONE: 651-378-2633  
FAX:  
EMAIL: JEFFREY.GILBERT@LUMEN.COM

WC: OSSEMNXD  
JOB: P.112927 - B12

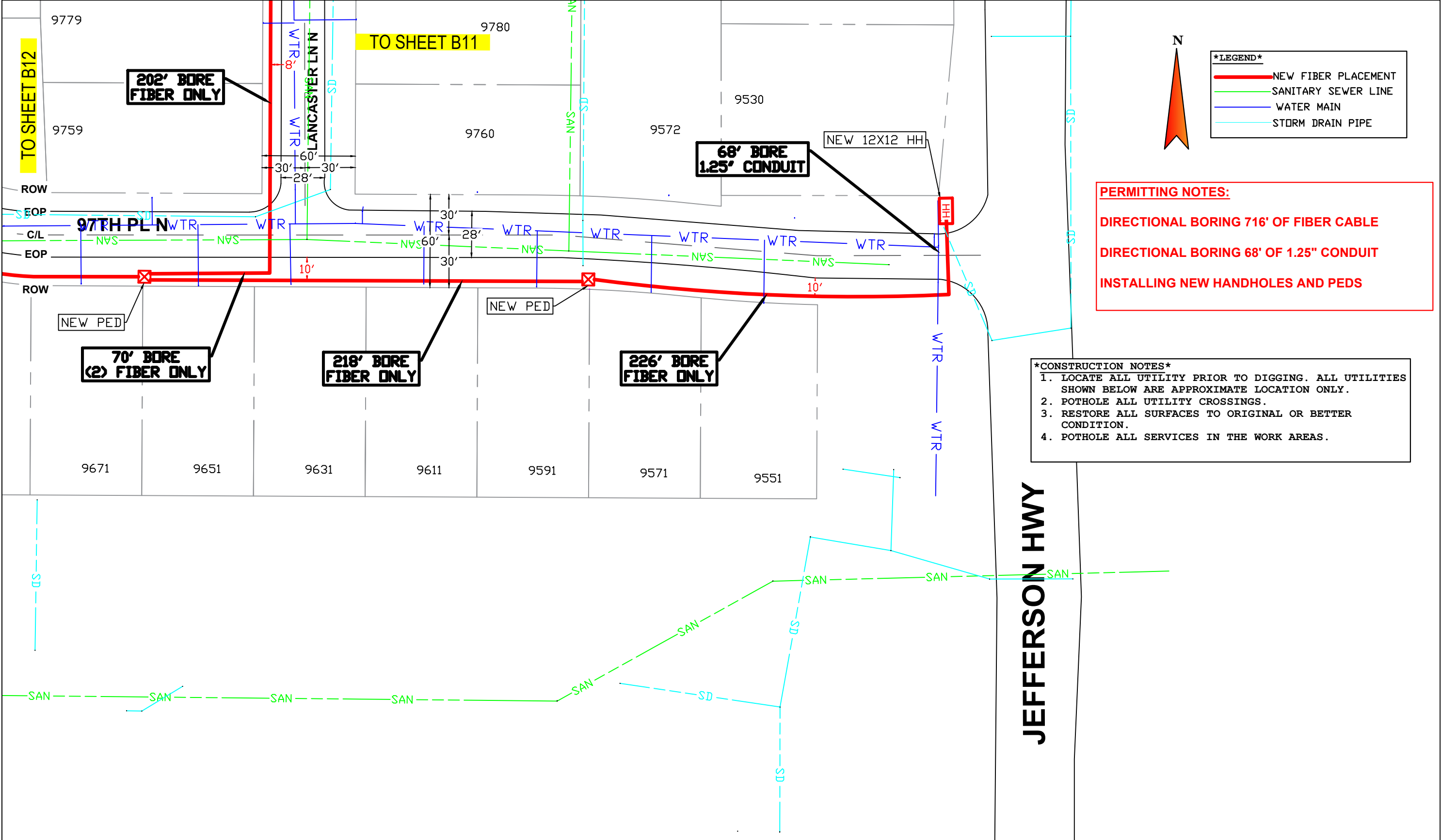
DRAWING SYMBOLS

THE SUBSURFACE UTILITY INFORMATION IN THIS PLAN IS QUALITY LEVEL D. THIS QUALITY LEVEL WAS DETERMINED ACCORDING TO THE GUIDELINES FOR THE COLLECTION AND DEPICTION OF EXISTING SUBSURFACE UTILITY DATA



NO SCALE

SHEET: 12 OF 13



**PERMITTING NOTES:**

DIRECTIONAL BORING 716' OF FIBER CABLE

DIRECTIONAL BORING 68' OF 1.25" CONDUIT

INSTALLING NEW HANDHOLES AND PEDS

- \*CONSTRUCTION NOTES\***
- 1. LOCATE ALL UTILITY PRIOR TO DIGGING. ALL UTILITIES SHOWN BELOW ARE APPROXIMATE LOCATION ONLY.
  - 2. POT HOLE ALL UTILITY CROSSINGS.
  - 3. RESTORE ALL SURFACES TO ORIGINAL OR BETTER CONDITION.
  - 4. POT HOLE ALL SERVICES IN THE WORK AREAS.