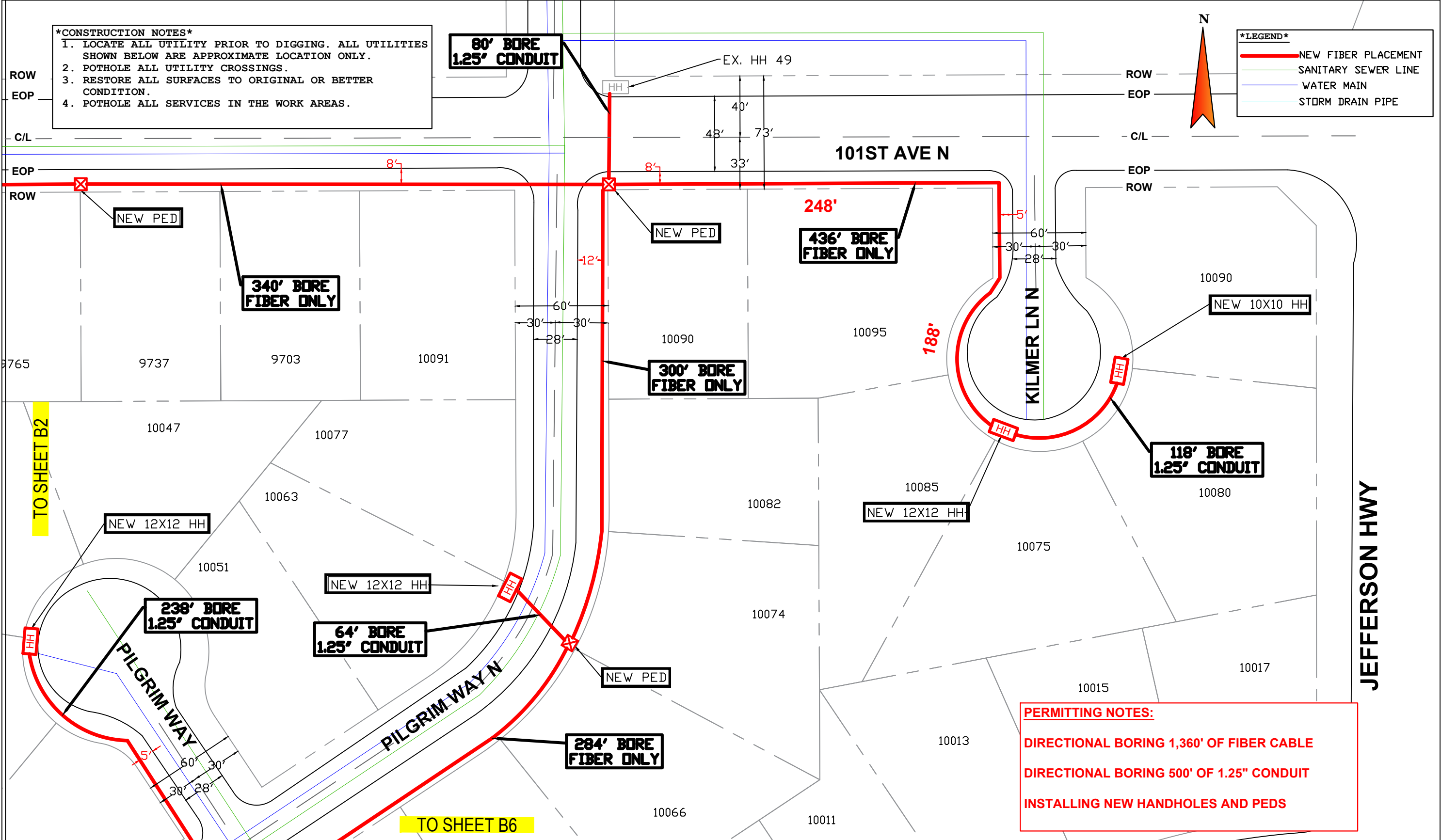


**\*CONSTRUCTION NOTES\***  
 1. LOCATE ALL UTILITY PRIOR TO DIGGING. ALL UTILITIES SHOWN BELOW ARE APPROXIMATE LOCATION ONLY.  
 2. POTHOLE ALL UTILITY CROSSINGS.  
 3. RESTORE ALL SURFACES TO ORIGINAL OR BETTER CONDITION.  
 4. POTHOLE ALL SERVICES IN THE WORK AREAS.

**\*LEGEND\***  
 — NEW FIBER PLACEMENT  
 — SANITARY SEWER LINE  
 — WATER MAIN  
 — STORM DRAIN PIPE



**PERMITTING NOTES:**  
 DIRECTIONAL BORING 1,360' OF FIBER CABLE  
 DIRECTIONAL BORING 500' OF 1.25" CONDUIT  
 INSTALLING NEW HANDHOLES AND PEDS

**LUMEN**  
 301 W 65TH ST  
 RICHFIELD, MN 55423

ENGINEER: JEFF GILBERT  
 PHONE: 651-378-2633  
 FAX:  
 EMAIL: JEFFREY.GILBERT@LUMEN.COM

WC: OSSEMNXD  
 JOB: P.112927 - B1

DRAWING SYMBOLS  
 THE SUBSURFACE UTILITY INFORMATION IN THIS PLAN IS QUALITY LEVEL D. THIS QUALITY LEVEL WAS DETERMINED ACCORDING TO THE GUIDELINES FOR THE COLLECTION AND DEPICTION OF EXISTING SUBSURFACE UTILITY DATA



NO SCALE  
 SHEET: 1 OF 13

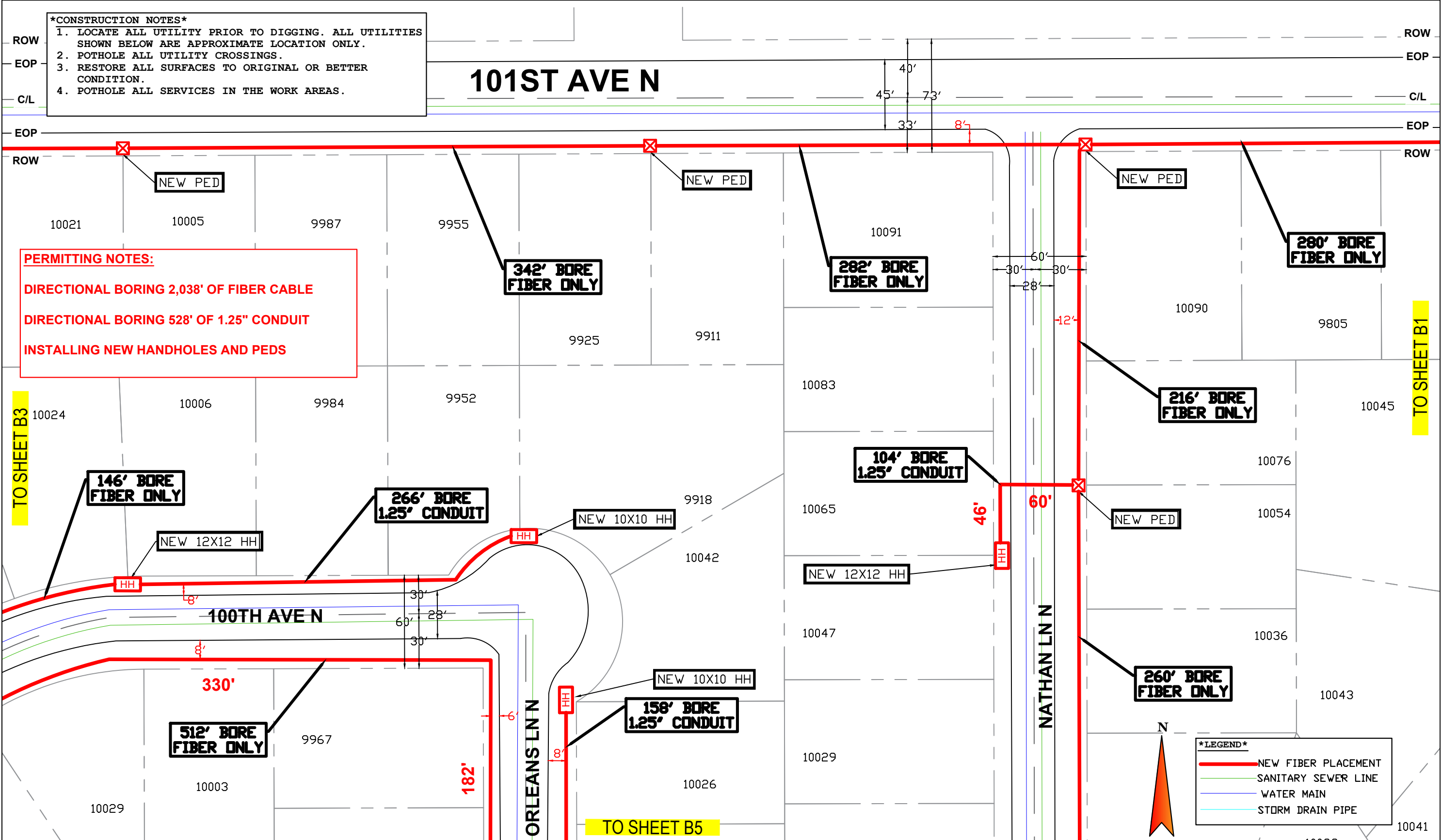
**\*CONSTRUCTION NOTES\***

1. LOCATE ALL UTILITY PRIOR TO DIGGING. ALL UTILITIES SHOWN BELOW ARE APPROXIMATE LOCATION ONLY.
2. POTHOLE ALL UTILITY CROSSINGS.
3. RESTORE ALL SURFACES TO ORIGINAL OR BETTER CONDITION.
4. POTHOLE ALL SERVICES IN THE WORK AREAS.

# 101ST AVE N

**PERMITTING NOTES:**

- DIRECTIONAL BORING 2,038' OF FIBER CABLE
- DIRECTIONAL BORING 528' OF 1.25" CONDUIT
- INSTALLING NEW HANDHOLES AND PEDS



TO SHEET B3

TO SHEET B1

TO SHEET B5

**\*LEGEND\***

<span style="color: red;">—</span>	NEW FIBER PLACEMENT
<span style="color: green;">—</span>	SANITARY SEWER LINE
<span style="color: blue;">—</span>	WATER MAIN
<span style="color: cyan;">—</span>	STORM DRAIN PIPE

**LUMEN®**  
301 W 65TH ST  
RICHFIELD, MN 55423

ENGINEER: JEFF GILBERT  
PHONE: 651-378-2633  
FAX:  
EMAIL: JEFFREY.GILBERT@LUMEN.COM

WC: OSSEMNX0  
JOB: P.112927 - B2

DRAWING SYMBOLS  
THE SUBSURFACE UTILITY INFORMATION IN THIS PLAN IS QUALITY LEVEL D. THIS QUALITY LEVEL WAS DETERMINED ACCORDING TO THE GUIDELINES FOR THE COLLECTION AND DEPICTION OF EXISTING SUBSURFACE UTILITY DATA

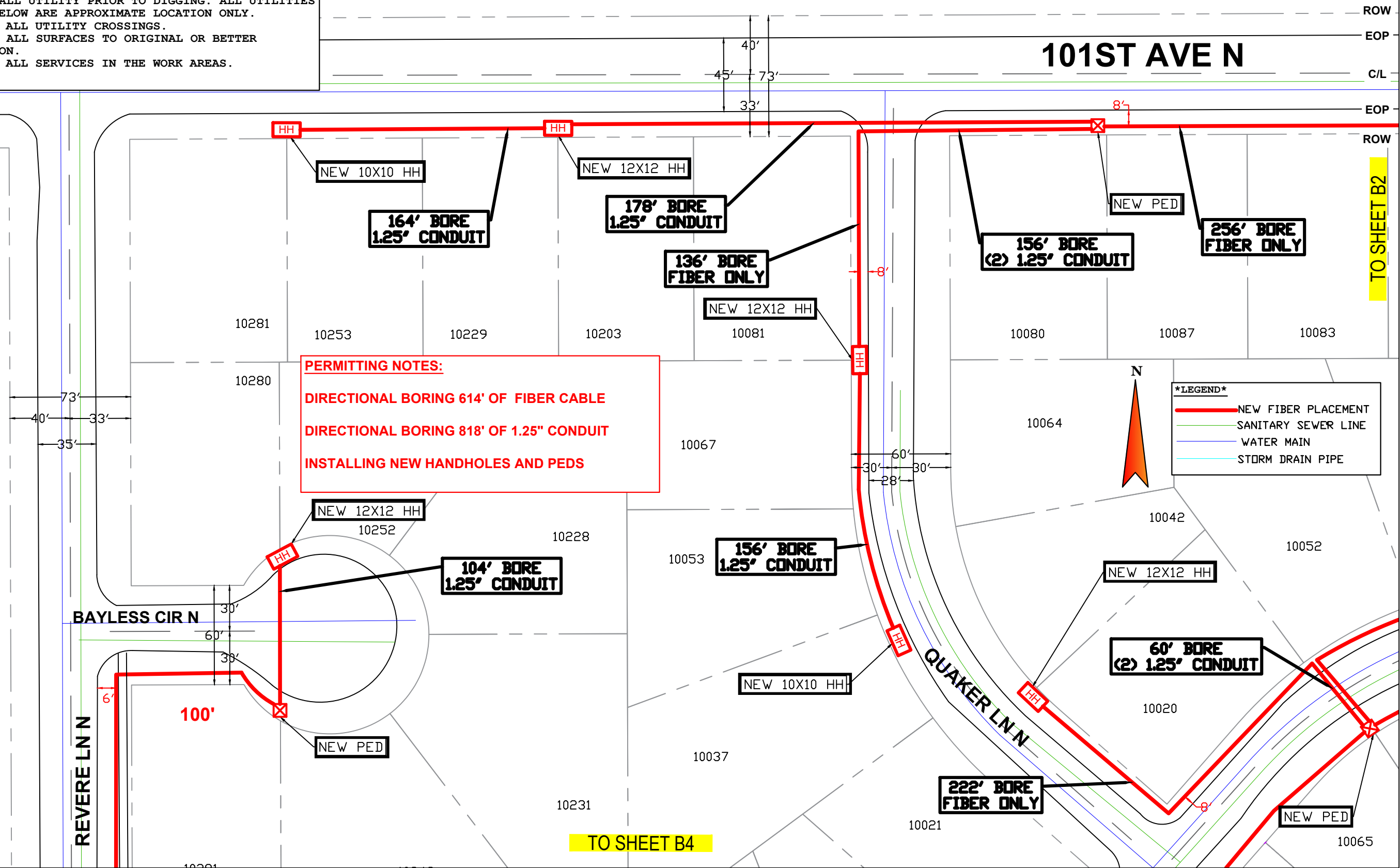


NO SCALE  
SHEET: 2 OF 13

**\*CONSTRUCTION NOTES\***

1. LOCATE ALL UTILITY PRIOR TO DIGGING. ALL UTILITIES SHOWN BELOW ARE APPROXIMATE LOCATION ONLY.
2. POTHOLE ALL UTILITY CROSSINGS.
3. RESTORE ALL SURFACES TO ORIGINAL OR BETTER CONDITION.
4. POTHOLE ALL SERVICES IN THE WORK AREAS.

**101ST AVE N**



**LUMEN®**  
301 W 65TH ST  
RICHFIELD, MN 55423

ENGINEER: JEFF GILBERT  
PHONE: 651-378-2633  
FAX:  
EMAIL: JEFFREY.GILBERT@LUMEN.COM

WC: OSSEMNXD  
JOB: P.112927 - B3

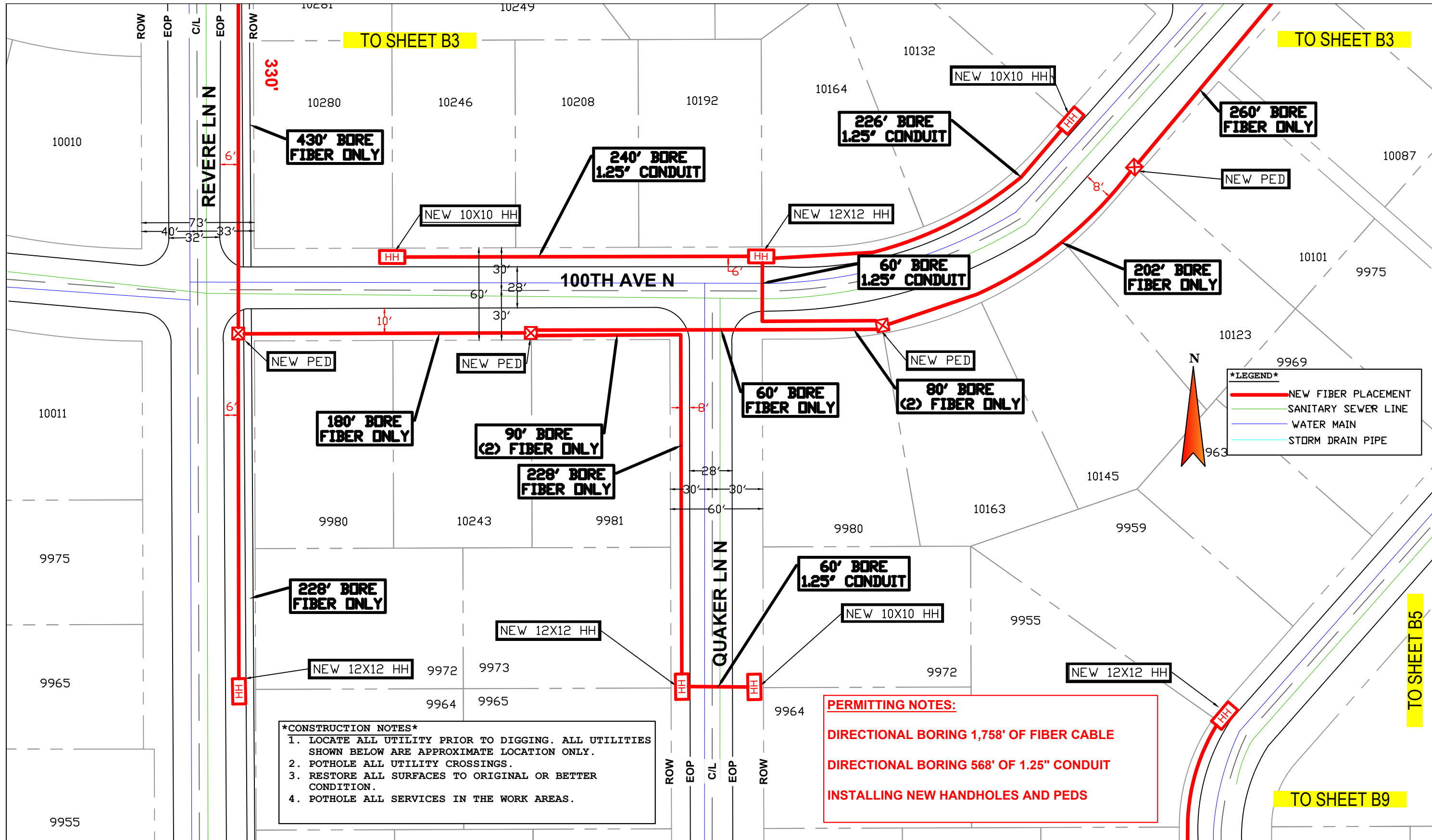
**DRAWING SYMBOLS**

THE SUBSURFACE UTILITY INFORMATION IN THIS PLAN IS QUALITY LEVEL D. THIS QUALITY LEVEL WAS DETERMINED ACCORDING TO THE GUIDELINES FOR THE COLLECTION AND DEPICTION OF EXISTING SUBSURFACE UTILITY DATA



NO SCALE

SHEET: 3 OF 13



**\*CONSTRUCTION NOTES\***  
 1. LOCATE ALL UTILITY PRIOR TO DIGGING. ALL UTILITIES SHOWN BELOW ARE APPROXIMATE LOCATION ONLY.  
 2. POT HOLE ALL UTILITY CROSSINGS.  
 3. RESTORE ALL SURFACES TO ORIGINAL OR BETTER CONDITION.  
 4. POT HOLE ALL SERVICES IN THE WORK AREAS.

**PERMITTING NOTES:**  
 DIRECTIONAL BORING 1,758' OF FIBER CABLE  
 DIRECTIONAL BORING 568' OF 1.25" CONDUIT  
 INSTALLING NEW HANDHOLES AND PEDS

**\*LEGEND\***  
 — NEW FIBER PLACEMENT  
 — SANITARY SEWER LINE  
 — WATER MAIN  
 — STORM DRAIN PIPE

**LUMEN**  
 301 W 65TH ST  
 RICHFIELD, MN 55423

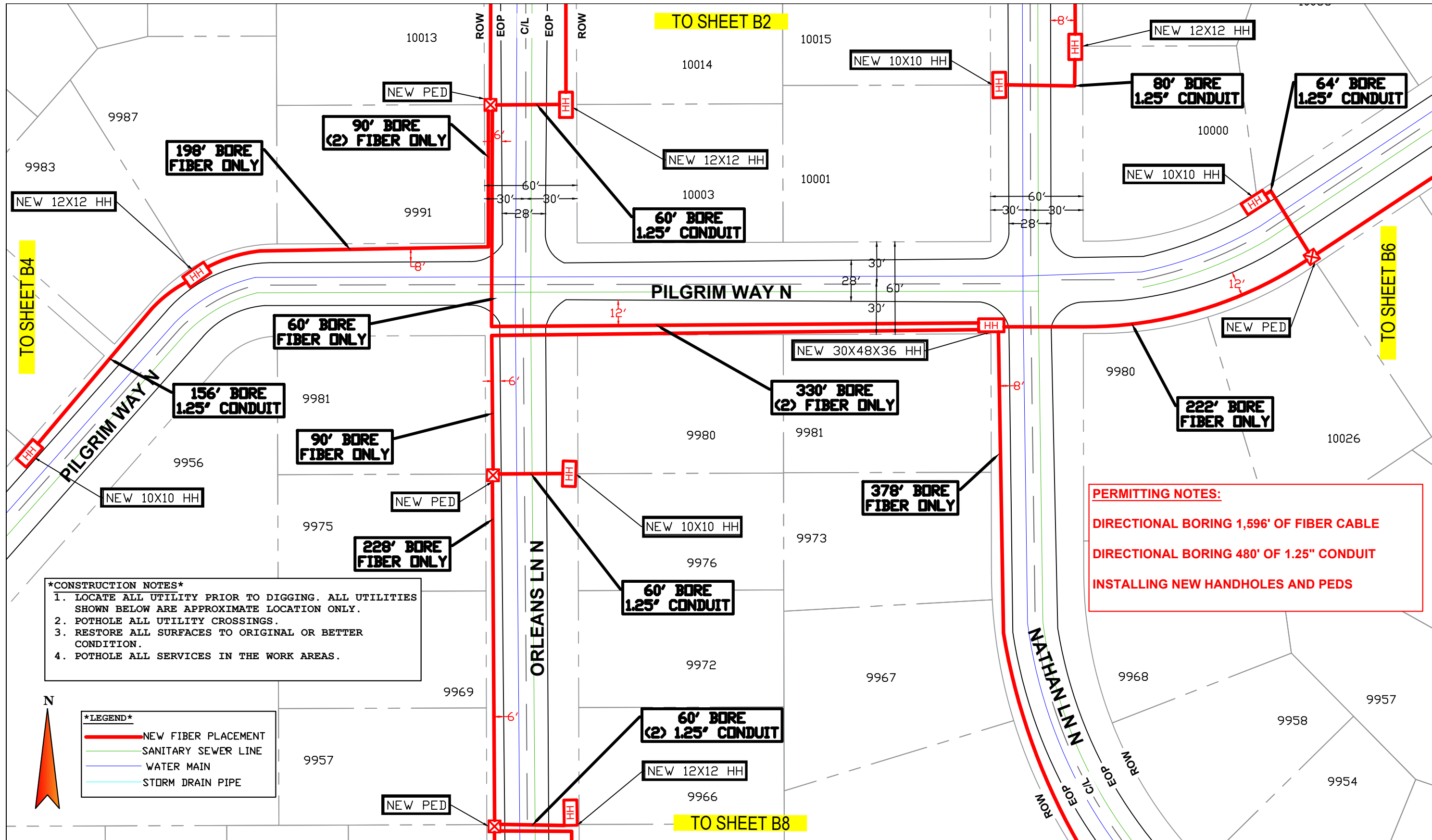
ENGINEER: JEFF GILBERT  
 PHONE: 651-378-2633  
 FAX:  
 EMAIL: JEFFREY.GILBERT@LUMEN.COM

WC: OSSEMNXD  
 JOB: P.112927 - B4

DRAWING SYMBOLS  
 THE SUBSURFACE UTILITY INFORMATION IN THIS PLAN IS QUALITY LEVEL D. THIS QUALITY LEVEL WAS DETERMINED ACCORDING TO THE GUIDELINES FOR THE COLLECTION AND DEPICTION OF EXISTING SUBSURFACE UTILITY DATA



NO SCALE  
 SHEET: 4 OF 13



**PERMITTING NOTES:**  
 DIRECTIONAL BORING 1,596' OF FIBER CABLE  
 DIRECTIONAL BORING 480' OF 1.25" CONDUIT  
 INSTALLING NEW HANDHOLES AND PEDS

**\*CONSTRUCTION NOTES\***  
 1. LOCATE ALL UTILITY PRIOR TO DIGGING. ALL UTILITIES SHOWN BELOW ARE APPROXIMATE LOCATION ONLY.  
 2. POTHOLE ALL UTILITY CROSSINGS.  
 3. RESTORE ALL SURFACES TO ORIGINAL OR BETTER CONDITION.  
 4. POTHOLE ALL SERVICES IN THE WORK AREAS.

**\*LEGEND\***  
 — NEW FIBER PLACEMENT  
 — SANITARY SEWER LINE  
 — WATER MAIN  
 — STORM DRAIN PIPE

**LUMEN®**  
 301 W 65TH ST  
 RICHFIELD, MN 55423

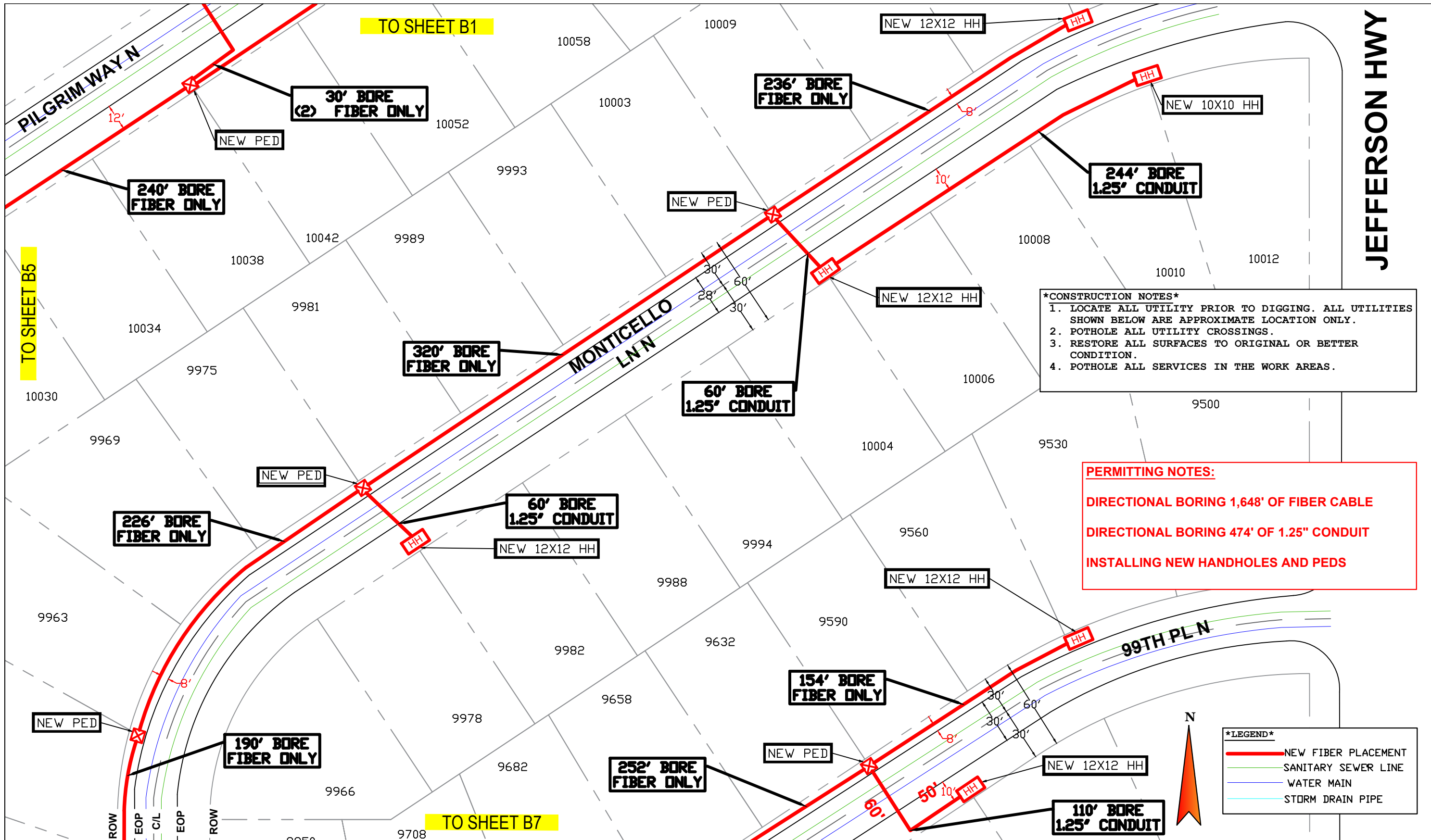
ENGINEER: JEFF GILBERT  
 PHONE: 651-378-2633  
 FAX:  
 EMAIL: JEFFREY.GILBERT@LUMEN.COM

WC: OSSEMNX0  
 JOB: P.112927 - B5

DRAWING SYMBOLS  
 THE SUBSURFACE UTILITY INFORMATION IN THIS PLAN IS QUALITY LEVEL D. THIS QUALITY LEVEL WAS DETERMINED ACCORDING TO THE GUIDELINES FOR THE COLLECTION AND DEPICTION OF EXISTING SUBSURFACE UTILITY DATA



NO SCALE  
 SHEET: 5 OF 13



**LUMEN**  
 301 W 65TH ST  
 RICHFIELD, MN 55423

ENGINEER: JEFF GILBERT  
 PHONE: 651-378-2633  
 FAX:  
 EMAIL: JEFFREY.GILBERT@LUMEN.COM

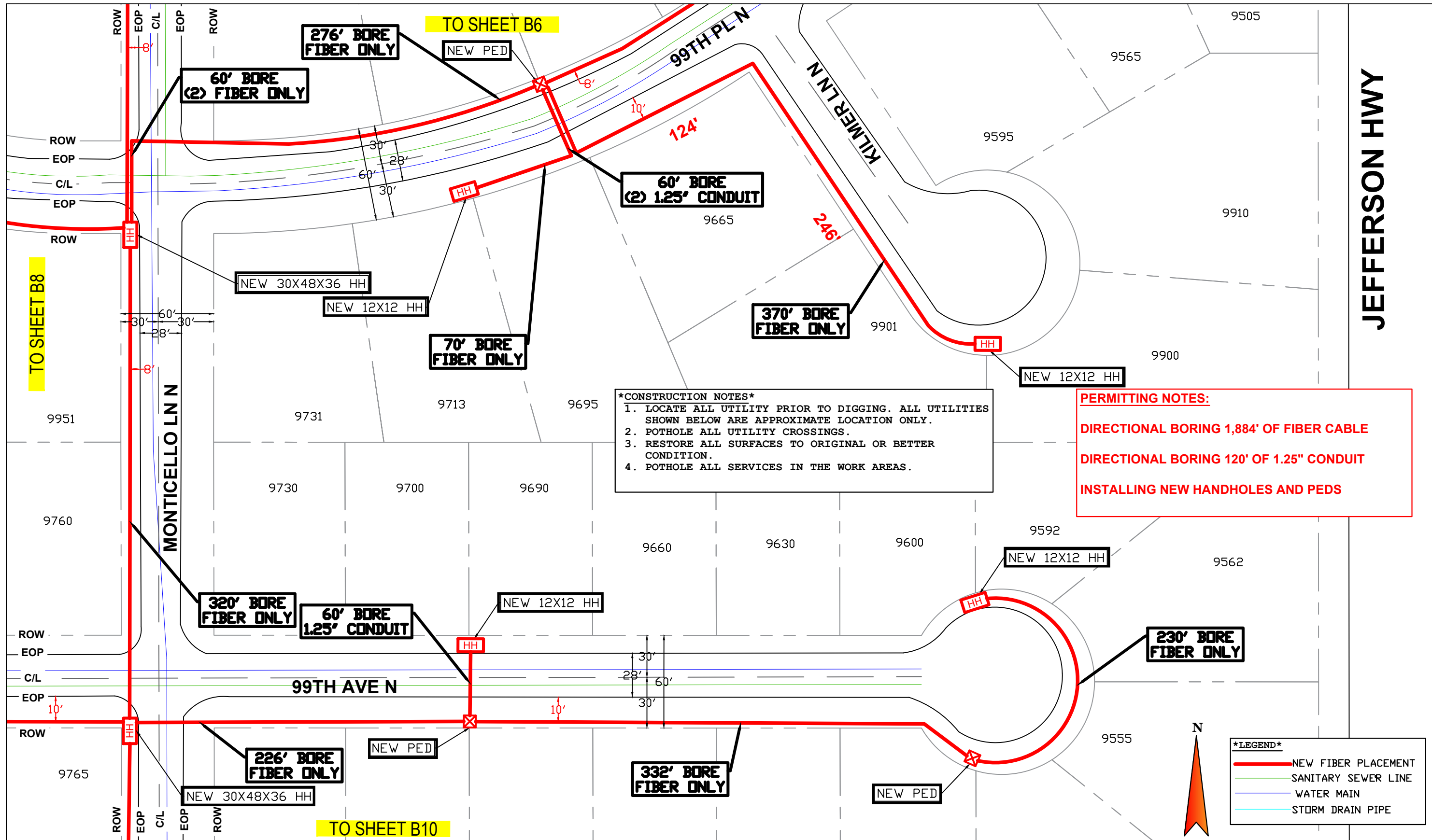
WC: OSSEMNXD  
 JOB: P.112927 - B6

DRAWING SYMBOLS

THE SUBSURFACE UTILITY INFORMATION IN THIS PLAN IS QUALITY LEVEL D. THIS QUALITY LEVEL WAS DETERMINED ACCORDING TO THE GUIDELINES FOR THE COLLECTION AND DEPICTION OF EXISTING SUBSURFACE UTILITY DATA



NO SCALE  
 SHEET: 6 OF 13



**\*CONSTRUCTION NOTES\***

1. LOCATE ALL UTILITY PRIOR TO DIGGING. ALL UTILITIES SHOWN BELOW ARE APPROXIMATE LOCATION ONLY.
2. POT HOLE ALL UTILITY CROSSINGS.
3. RESTORE ALL SURFACES TO ORIGINAL OR BETTER CONDITION.
4. POT HOLE ALL SERVICES IN THE WORK AREAS.

**PERMITTING NOTES:**

**DIRECTIONAL BORING 1,884' OF FIBER CABLE**

**DIRECTIONAL BORING 120' OF 1.25" CONDUIT**

**INSTALLING NEW HANDHOLES AND PEDS**

**\*LEGEND\***

- NEW FIBER PLACEMENT
- SANITARY SEWER LINE
- WATER MAIN
- STORM DRAIN PIPE

TO SHEET B8

TO SHEET B10

TO SHEET B6

JEFFERSON HWY

**LUMEN**  
301 W 65TH ST  
RICHFIELD, MN 55423

ENGINEER: JEFF GILBERT  
PHONE: 651-378-2633  
FAX:  
EMAIL: JEFFREY.GILBERT@LUMEN.COM

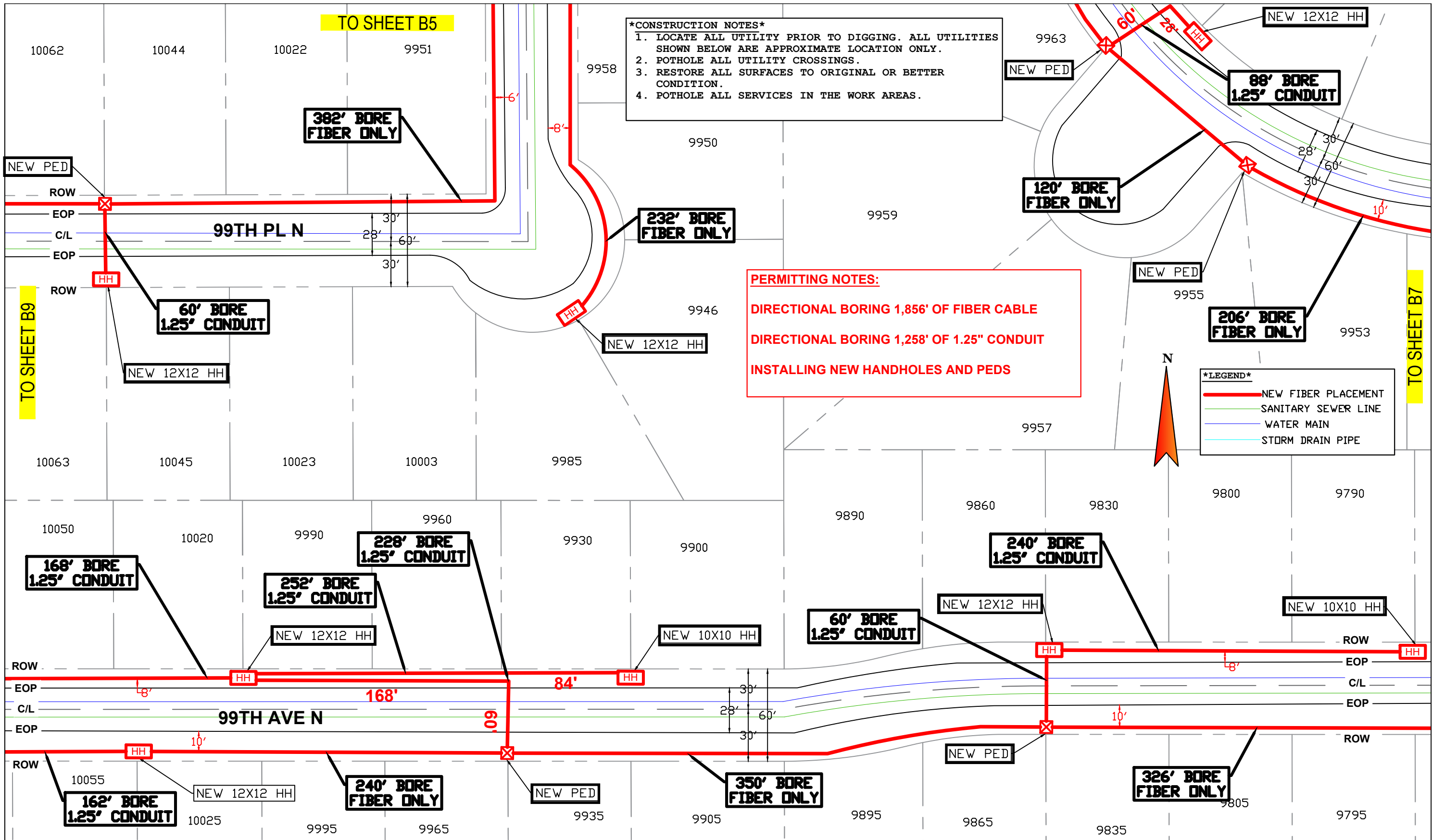
WC: OSSEMNXD  
JOB: P.112927 - B7

DRAWING SYMBOLS

THE SUBSURFACE UTILITY INFORMATION IN THIS PLAN IS QUALITY LEVEL D. THIS QUALITY LEVEL WAS DETERMINED ACCORDING TO THE GUIDELINES FOR THE COLLECTION AND DEPICTION OF EXISTING SUBSURFACE UTILITY DATA



NO SCALE  
SHEET: 7 OF 13



**\*CONSTRUCTION NOTES\***  
 1. LOCATE ALL UTILITY PRIOR TO DIGGING. ALL UTILITIES SHOWN BELOW ARE APPROXIMATE LOCATION ONLY.  
 2. POTHOLE ALL UTILITY CROSSINGS.  
 3. RESTORE ALL SURFACES TO ORIGINAL OR BETTER CONDITION.  
 4. POTHOLE ALL SERVICES IN THE WORK AREAS.

**PERMITTING NOTES:**  
 DIRECTIONAL BORING 1,856' OF FIBER CABLE  
 DIRECTIONAL BORING 1,258' OF 1.25" CONDUIT  
 INSTALLING NEW HANDHOLES AND PEDS

**\*LEGEND\***  
 — NEW FIBER PLACEMENT  
 — SANITARY SEWER LINE  
 — WATER MAIN  
 — STORM DRAIN PIPE

**LUMEN®**  
 301 W 65TH ST  
 RICHFIELD, MN 55423

ENGINEER: JEFF GILBERT  
 PHONE: 651-378-2633  
 FAX:  
 EMAIL: JEFFREY.GILBERT@LUMEN.COM

WC: OSSEMNXD  
 JOB: P.112927 - B8

DRAWING SYMBOLS  
 THE SUBSURFACE UTILITY INFORMATION IN THIS PLAN IS QUALITY LEVEL D. THIS QUALITY LEVEL WAS DETERMINED ACCORDING TO THE GUIDELINES FOR THE COLLECTION AND DEPICTION OF EXISTING SUBSURFACE UTILITY DATA

**CREEK ENTERPRISE, INC.**  
 ND SCALE  
 SHEET: 8 OF 13



**\*CONSTRUCTION NOTES\***  
 1. LOCATE ALL UTILITY PRIOR TO DIGGING. ALL UTILITIES SHOWN BELOW ARE APPROXIMATE LOCATION ONLY.  
 2. POTHOLE ALL UTILITY CROSSINGS.  
 3. RESTORE ALL SURFACES TO ORIGINAL OR BETTER CONDITION.  
 4. POTHOLE ALL SERVICES IN THE WORK AREAS.

10324

9950

10242

10200

10180

10142

9951

10080

**150' BORE  
1.25' CONDUIT**

**180' BORE  
FIBER ONLY**

**212' BORE  
FIBER ONLY**

**90' BORE  
(3) FIBER ONLY**

**228' BORE  
FIBER ONLY**

NEW 12X12 HH

NEW PED

NEW PED

ROW

ROW  
EOP  
C/L  
EOP  
ROW

99TH PL N

ROW

EOP

C/L

EOP

ROW

REVERE LNN

PILGRIM WAY N

TO SHEET B8

10325

HH

NEW 10X10 HH

**246' BORE  
1.25' CONDUIT**

**68' BORE  
1.25' CONDUIT**

NEW 12X12 HH

**164' BORE  
1.25' CONDUIT**

NEW 10X10 HH

**542' BORE  
FIBER ONLY**

10281

10239

10203

10189

10167

10133

10101

10081

10280

10250

10220

10190

10160

10130

10100

10080

**PERMITTING NOTES:**  
 DIRECTIONAL BORING 1,496' OF FIBER CABLE  
 DIRECTIONAL BORING 1,180' OF 1.25" CONDUIT  
 INSTALLING NEW HANDHOLES AND PEDS

NEW 10X10 HH

82'

82'

**164' BORE  
1.25' CONDUIT**

NEW 12X12 HH

**246' BORE  
1.25' CONDUIT**

NEW 10X10 HH

NEW 10X10 HH

HH

HH

HH

HH

368'

**142' BORE  
1.25' CONDUIT**

NEW PED

**244' BORE  
FIBER ONLY**

NEW PED

NEW 10X10 HH

10285

10255

10225

10195

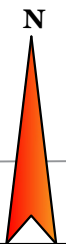
10165

10135

10105

10095

10085



**\*LEGEND\***  
 — NEW FIBER PLACEMENT  
 — SANITARY SEWER LINE  
 — WATER MAIN  
 — STORM DRAIN PIPE

DRAWING SYMBOLS

THE SUBSURFACE UTILITY INFORMATION IN THIS PLAN IS QUALITY LEVEL D. THIS QUALITY LEVEL WAS DETERMINED ACCORDING TO THE GUIDELINES FOR THE COLLECTION AND DEPICTION OF EXISTING SUBSURFACE UTILITY DATA



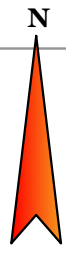
NO SCALE

SHEET: 9 OF 13

**LUMEN®**  
 301 W 65TH ST  
 RICHFIELD, MN 55423

ENGINEER: JEFF GILBERT  
 PHONE: 651-378-2633  
 FAX:  
 EMAIL: JEFFREY.GILBERT@LUMEN.COM

WC: OSSEMNX0  
 JOB: P.112927 - B9



**\*LEGEND\***

	NEW FIBER PLACEMENT
	SANITARY SEWER LINE
	WATER MAIN
	STORM DRAIN PIPE

**PERMITTING NOTES:**

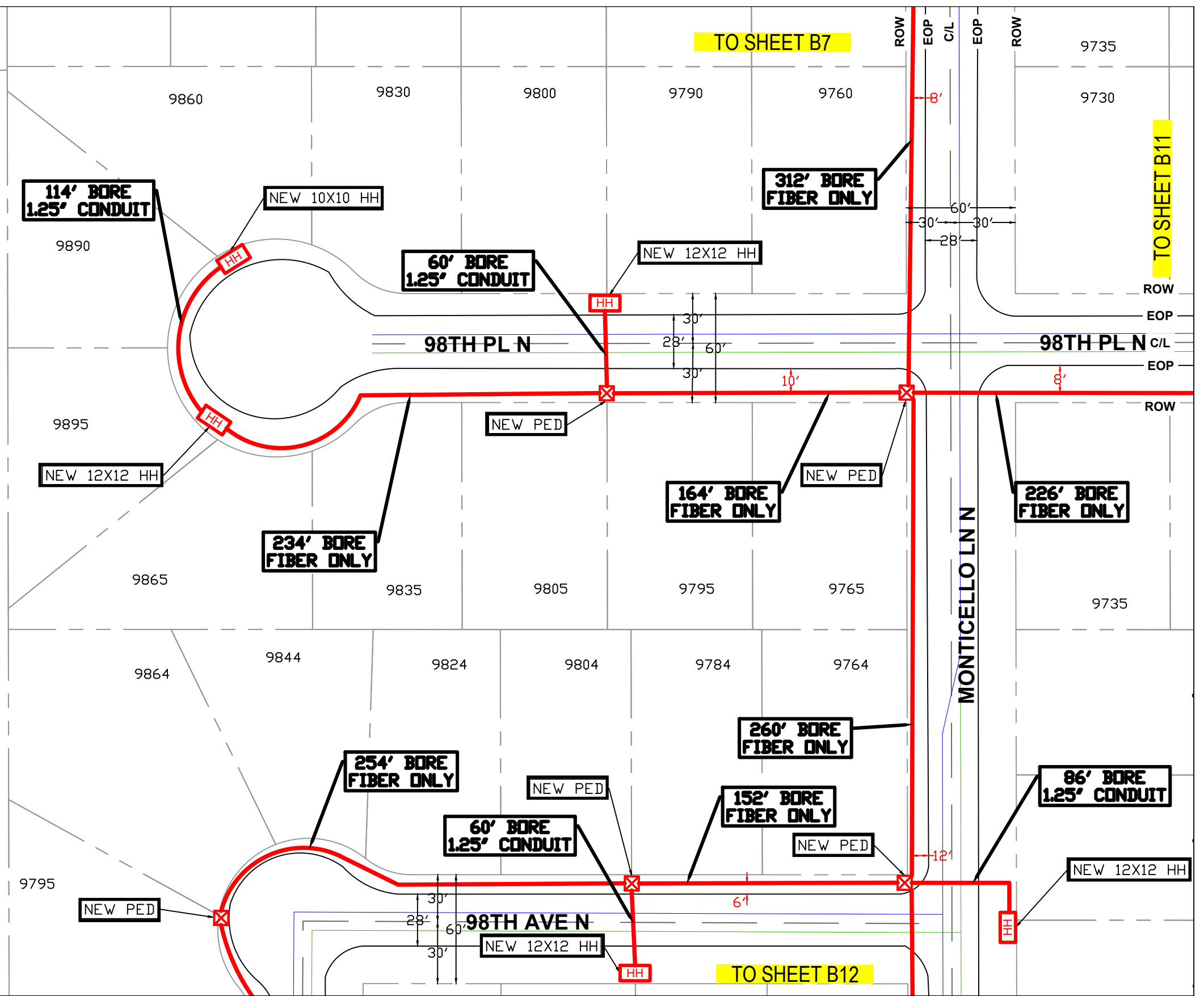
DIRECTIONAL BORING 1,602' OF FIBER CABLE

DIRECTIONAL BORING 320' OF 1.25" CONDUIT

INSTALLING NEW HANDHOLES AND PEDS

**\*CONSTRUCTION NOTES\***

1. LOCATE ALL UTILITY PRIOR TO DIGGING. ALL UTILITIES SHOWN BELOW ARE APPROXIMATE LOCATION ONLY.
2. POTHOLE ALL UTILITY CROSSINGS.
3. RESTORE ALL SURFACES TO ORIGINAL OR BETTER CONDITION.
4. POTHOLE ALL SERVICES IN THE WORK AREAS.



TO SHEET B7

TO SHEET B11

TO SHEET B12

**LUMEN**<sup>®</sup>

301 W 65TH ST  
RICHFIELD, MN 55423

ENGINEER: JEFF GILBERT  
PHONE: 651-378-2633  
FAX:  
EMAIL: JEFFREY.GILBERT@LUMEN.COM

WC: OSSEMNXD  
JOB: P.112927 - B10

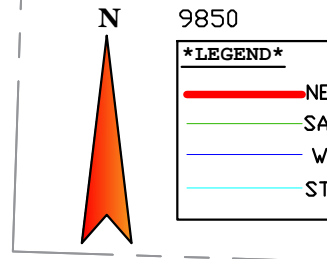
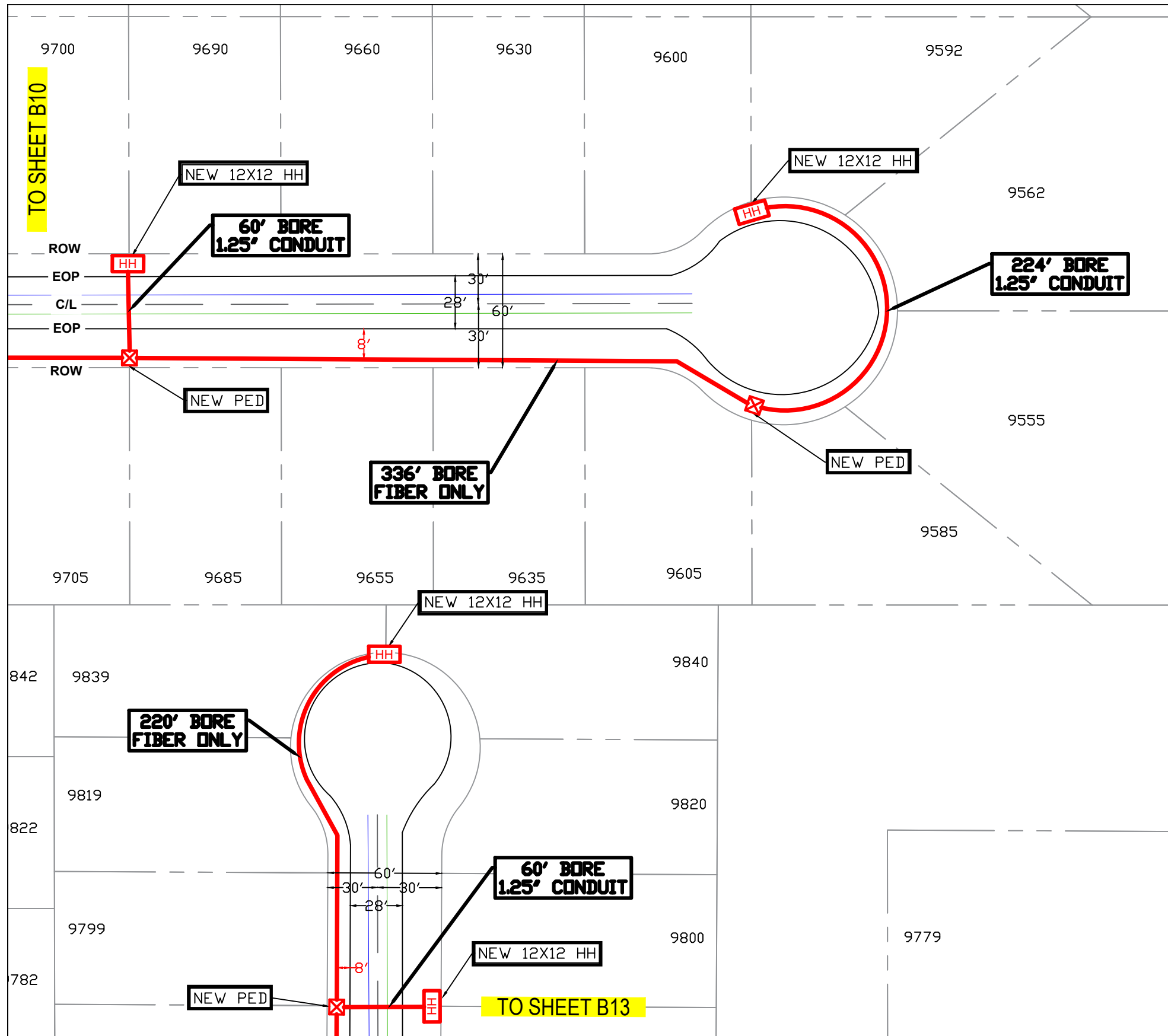
DRAWING SYMBOLS

THE SUBSURFACE UTILITY INFORMATION IN THIS PLAN IS QUALITY LEVEL D. THIS QUALITY LEVEL WAS DETERMINED ACCORDING TO THE GUIDELINES FOR THE COLLECTION AND DEPICTION OF EXISTING SUBSURFACE UTILITY DATA



NO SCALE

SHEET: 10 OF 13



**\*LEGEND\***

<span style="color: red;">—</span>	NEW FIBER PLACEMENT
<span style="color: green;">—</span>	SANITARY SEWER LINE
<span style="color: blue;">—</span>	WATER MAIN
<span style="color: cyan;">—</span>	STORM DRAIN PIPE

**PERMITTING NOTES:**

**DIRECTIONAL BORING 556' OF FIBER CABLE**

**DIRECTIONAL BORING 344' OF 1.25" CONDUIT**

**INSTALLING NEW HANDHOLES AND PEDS**

**\*CONSTRUCTION NOTES\***

1. LOCATE ALL UTILITY PRIOR TO DIGGING. ALL UTILITIES SHOWN BELOW ARE APPROXIMATE LOCATION ONLY.
2. POT HOLE ALL UTILITY CROSSINGS.
3. RESTORE ALL SURFACES TO ORIGINAL OR BETTER CONDITION.
4. POT HOLE ALL SERVICES IN THE WORK AREAS.

**JEFFERSON HWY**

**LUMEN®**  
301 W 65TH ST  
RICHFIELD, MN 55423

ENGINEER: JEFF GILBERT  
PHONE: 651-378-2633  
FAX:  
EMAIL: JEFFREY.GILBERT@LUMEN.COM

WC: OSSEMNXD  
JOB: P.112927 - B11

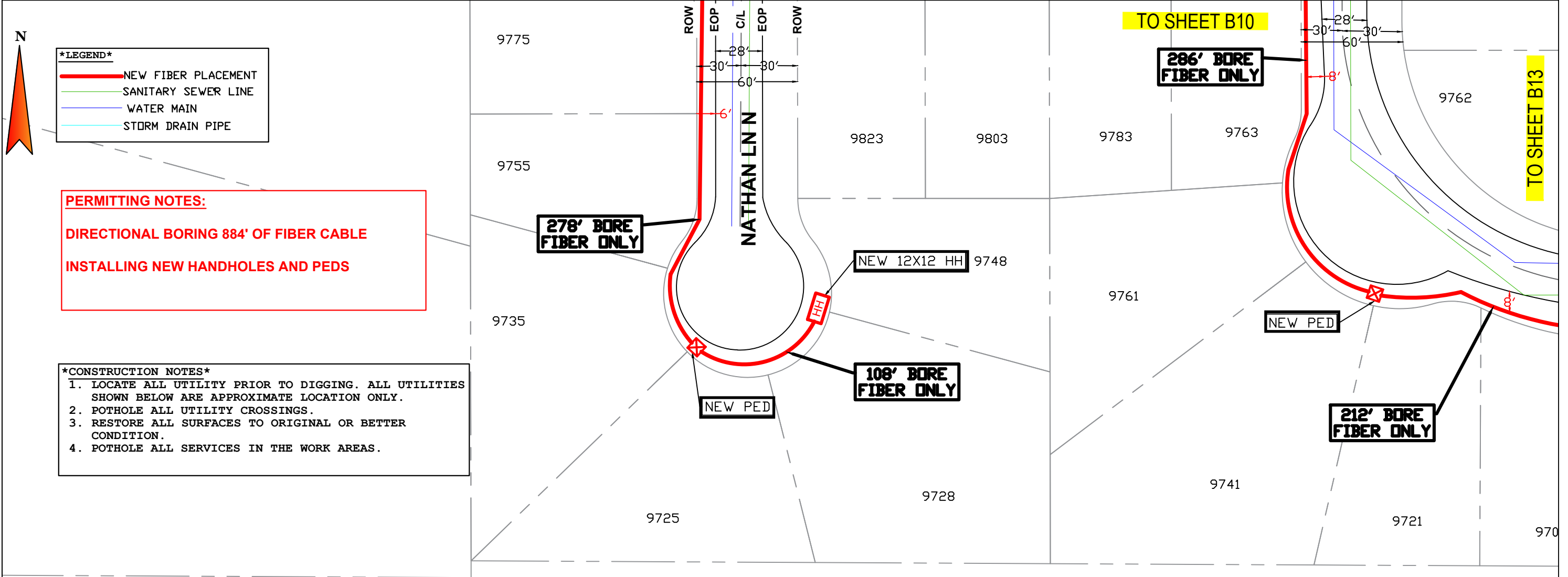
DRAWING SYMBOLS

THE SUBSURFACE UTILITY INFORMATION IN THIS PLAN IS QUALITY LEVEL D. THIS QUALITY LEVEL WAS DETERMINED ACCORDING TO THE GUIDELINES FOR THE COLLECTION AND DEPICTION OF EXISTING SUBSURFACE UTILITY DATA



NO SCALE

**SHEET: 11 OF 13**



**\*LEGEND\***

- NEW FIBER PLACEMENT
- SANITARY SEWER LINE
- WATER MAIN
- STORM DRAIN PIPE

**PERMITTING NOTES:**

**DIRECTIONAL BORING 884' OF FIBER CABLE**

**INSTALLING NEW HANDHOLES AND PEDS**

**\*CONSTRUCTION NOTES\***

1. LOCATE ALL UTILITY PRIOR TO DIGGING. ALL UTILITIES SHOWN BELOW ARE APPROXIMATE LOCATION ONLY.
2. POTHOLE ALL UTILITY CROSSINGS.
3. RESTORE ALL SURFACES TO ORIGINAL OR BETTER CONDITION.
4. POTHOLE ALL SERVICES IN THE WORK AREAS.

**LUMEN®**  
 301 W 65TH ST  
 RICHFIELD, MN 55423

ENGINEER: JEFF GILBERT  
 PHONE: 651-378-2633  
 FAX:  
 EMAIL: JEFFREY.GILBERT@LUMEN.COM

WC: OSSEMNX0  
 JOB: P.112927 - B12

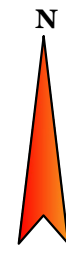
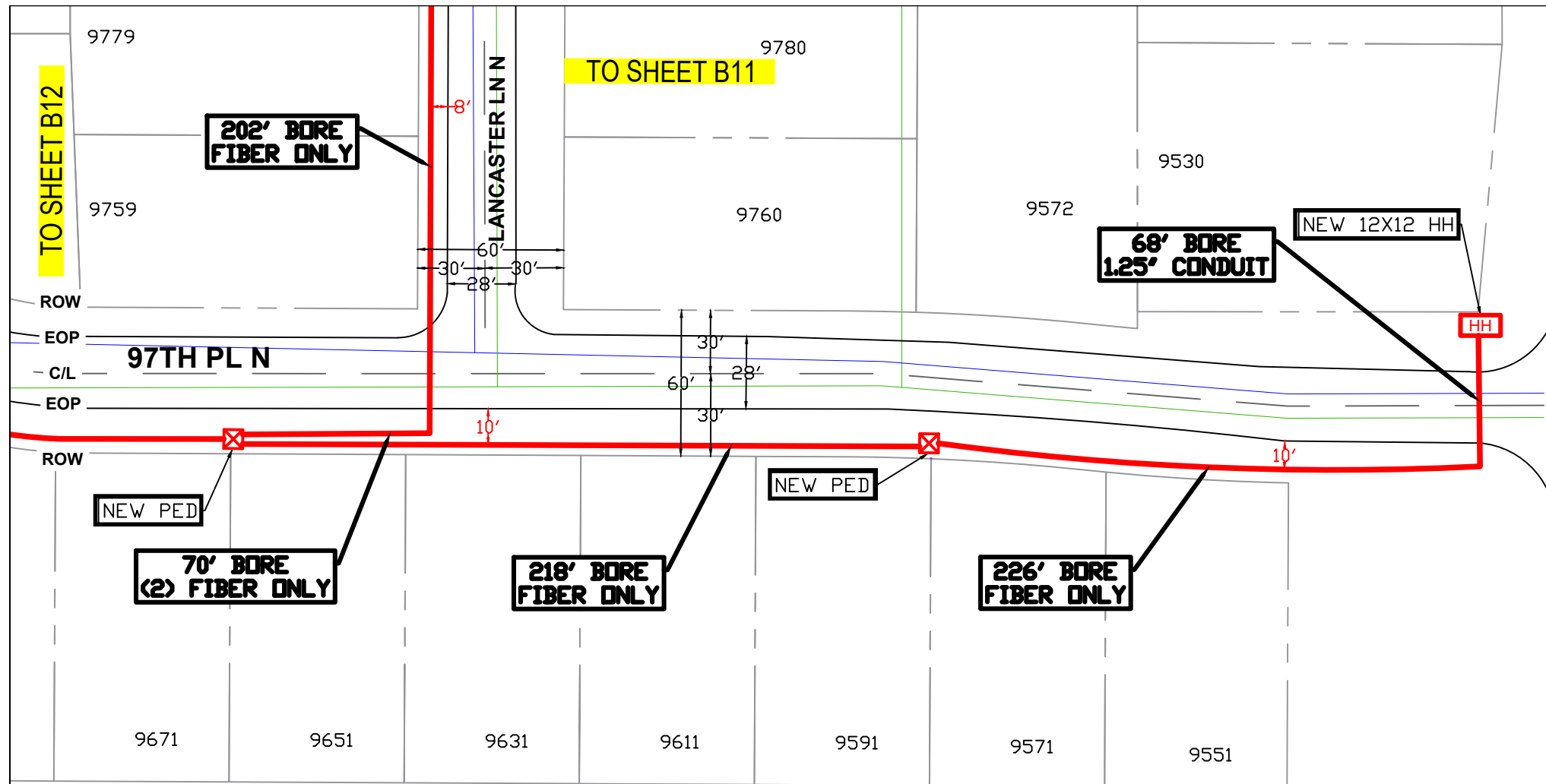
DRAWING SYMBOLS

THE SUBSURFACE UTILITY INFORMATION IN THIS PLAN IS QUALITY LEVEL D. THIS QUALITY LEVEL WAS DETERMINED ACCORDING TO THE GUIDELINES FOR THE COLLECTION AND DEPICTION OF EXISTING SUBSURFACE UTILITY DATA



NO SCALE

**SHEET: 12 OF 13**



**\*LEGEND\***

<span style="color: red;">—</span>	NEW FIBER PLACEMENT
<span style="color: green;">—</span>	SANITARY SEWER LINE
<span style="color: blue;">—</span>	WATER MAIN
<span style="color: cyan;">—</span>	STORM DRAIN PIPE

**PERMITTING NOTES:**

**DIRECTIONAL BORING 716' OF FIBER CABLE**

**DIRECTIONAL BORING 68' OF 1.25" CONDUIT**

**INSTALLING NEW HANDHOLES AND PEDS**

**\*CONSTRUCTION NOTES\***

1. LOCATE ALL UTILITY PRIOR TO DIGGING. ALL UTILITIES SHOWN BELOW ARE APPROXIMATE LOCATION ONLY.
2. POT HOLE ALL UTILITY CROSSINGS.
3. RESTORE ALL SURFACES TO ORIGINAL OR BETTER CONDITION.
4. POT HOLE ALL SERVICES IN THE WORK AREAS.

**JEFFERSON HWY**