

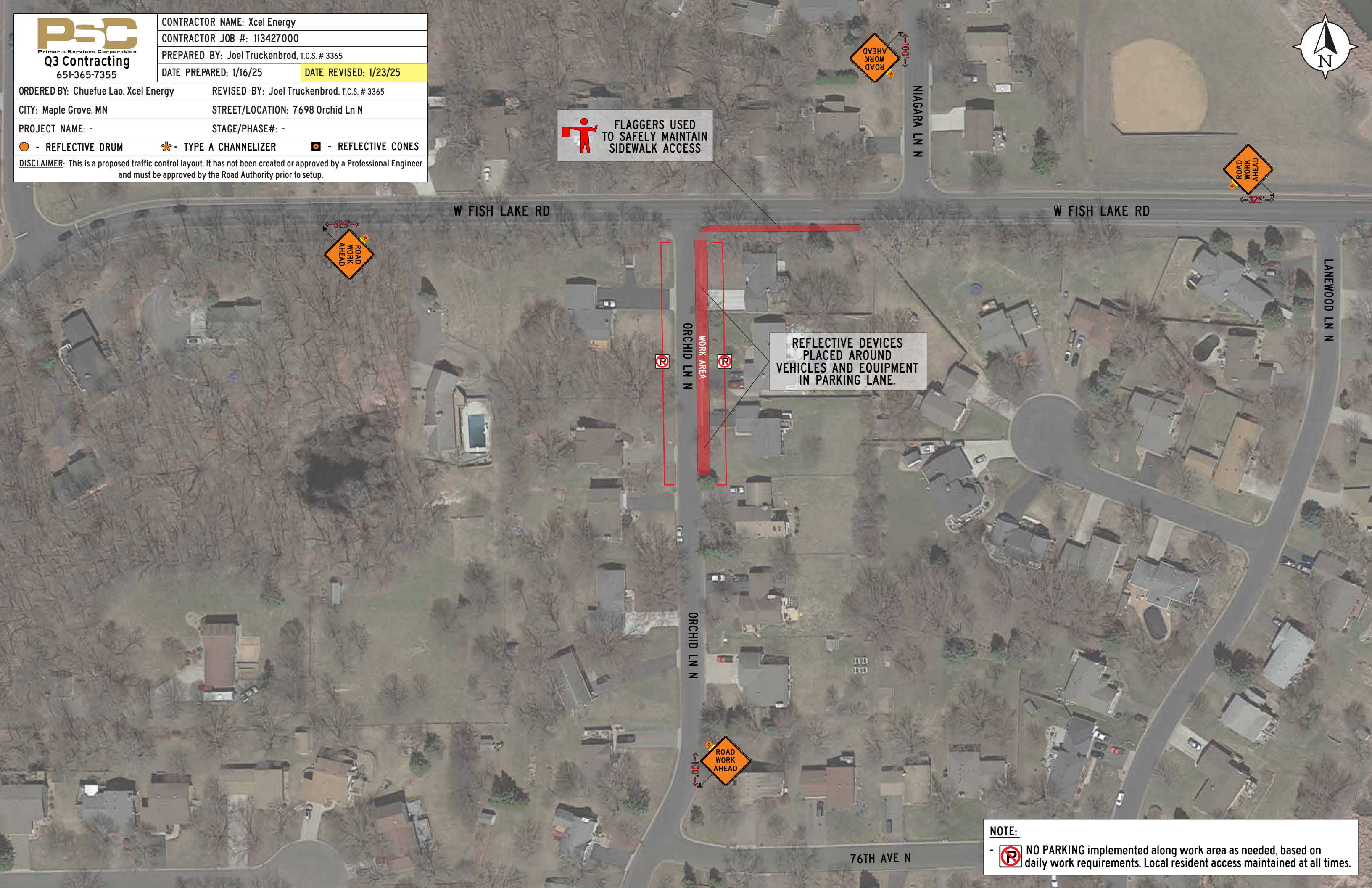


CONTRACTOR NAME: Xcel Energy	
CONTRACTOR JOB #: 113427000	
PREPARED BY: Joel Truckenbrod, T.C.S. # 3365	
DATE PREPARED: 1/16/25	DATE REVISED: 1/23/25
ORDERED BY: Chuefue Lao, Xcel Energy	REVISED BY: Joel Truckenbrod, T.C.S. # 3365
CITY: Maple Grove, MN	STREET/LOCATION: 7698 Orchid Ln N
PROJECT NAME: -	STAGE/PHASE#: -
● - REFLECTIVE DRUM	* - TYPE A CHANNELIZER
⦿ - REFLECTIVE CONES	
DISCLAIMER: This is a proposed traffic control layout. It has not been created or approved by a Professional Engineer and must be approved by the Road Authority prior to setup.	



 FLAGGERS USED TO SAFELY MAINTAIN SIDEWALK ACCESS

REFLECTIVE DEVICES PLACED AROUND VEHICLES AND EQUIPMENT IN PARKING LANE.



NOTE:
 -  NO PARKING implemented along work area as needed, based on daily work requirements. Local resident access maintained at all times.