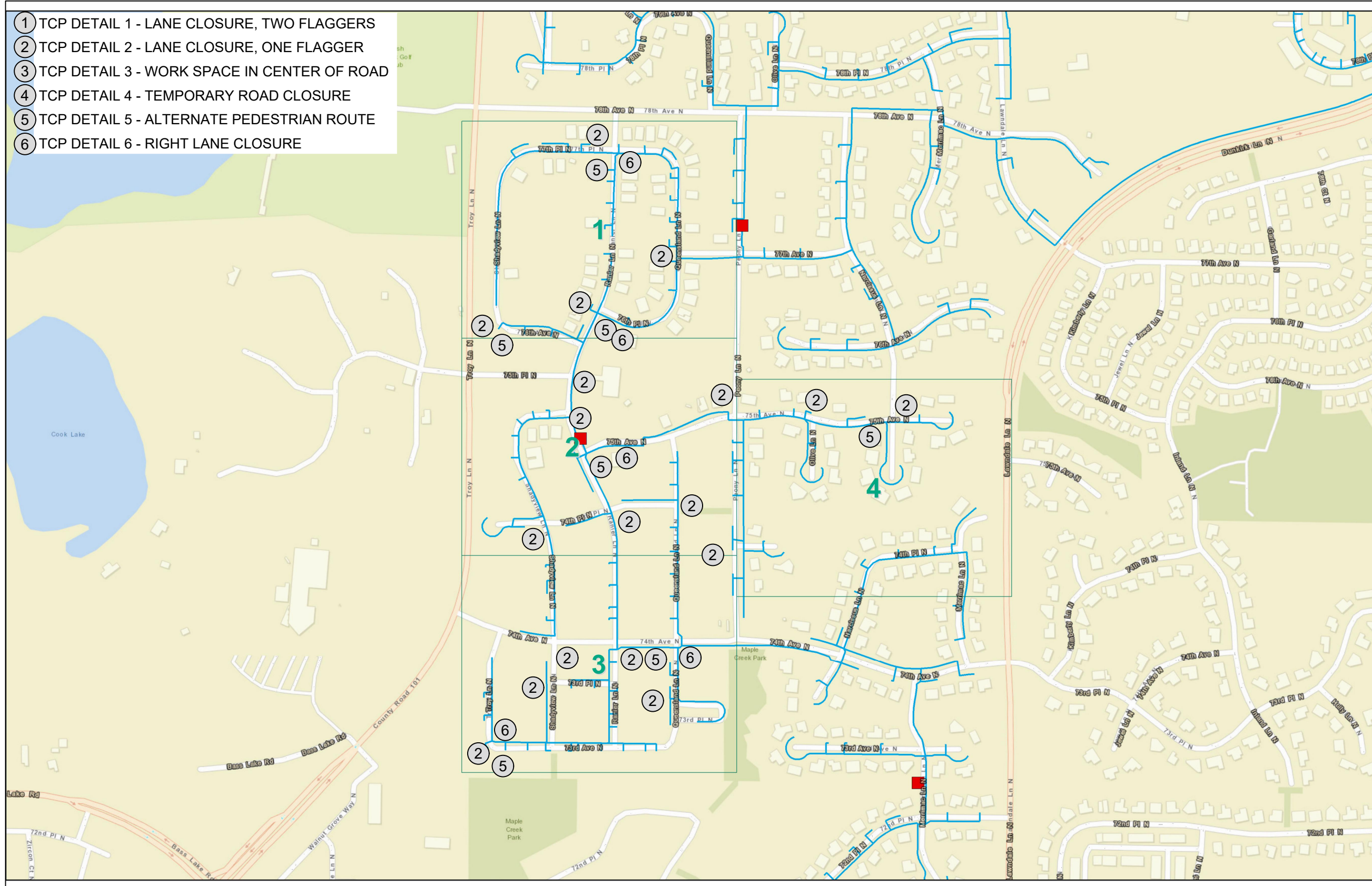


DETAILS

- ① TCP DETAIL 1 - LANE CLOSURE, TWO FLAGGERS
- ② TCP DETAIL 2 - LANE CLOSURE, ONE FLAGGER
- ③ TCP DETAIL 3 - WORK SPACE IN CENTER OF ROAD
- ④ TCP DETAIL 4 - TEMPORARY ROAD CLOSURE
- ⑤ TCP DETAIL 5 - ALTERNATE PEDESTRIAN ROUTE
- ⑥ TCP DETAIL 6 - RIGHT LANE CLOSURE



FIBERHOOD:
MPGV-MN-1-18

ENGINEER:
hbk
UTILITY
ENGINEERING
SOLUTIONS
A QUANTA SERVICES COMPANY
921 WEST VAN BUREN, SUITE 100
CHICAGO, IL 60607
PHONE: (312) 432-0076 FAX: (312) 432-0231
STATE OF ILLINOIS, DEPARTMENT OF PROFESSIONAL
REGULATION, LICENSE NO. 184-002308

OWNER/DEVELOPER:
gatewayfiber
275 WEST SERVICE RD
SUITE O
WRIGHT CITY, MO 63390

TITLE:
**PROPOSED FIBER - OPTIC
INSTALLATION
75TH AVE N & RANIER LN N
MAPLE GROVE, MN**

REVISIONS

REV	DATE	DESCRIPTION	BY
00	11/27/24	TCP	ASV
01			
02			
03			
04			
05			
06			
07			
08			
09			
10			
11			

DRAWN BY: ASV
CHECKED BY: AJR
APPROVED BY: NFJ

PROJECT NUMBER: 24-0177
DATE DRAWN: 11/27/24

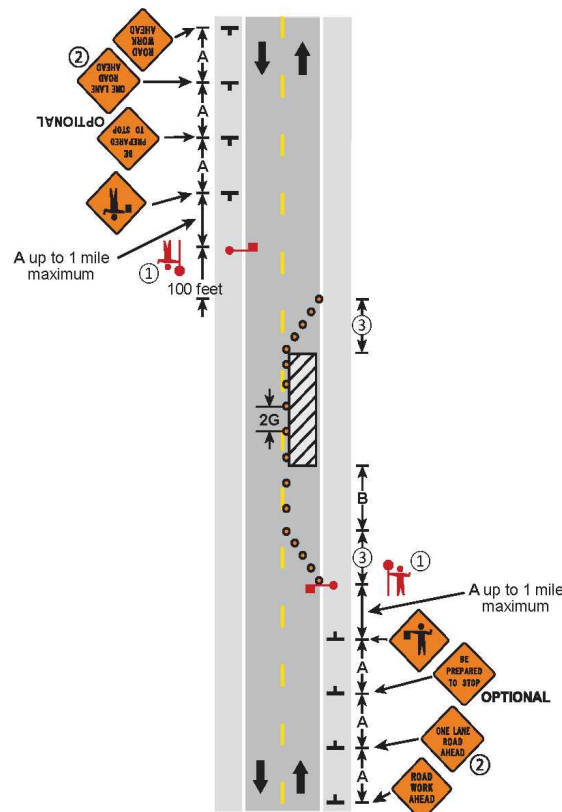
SHEET: **TC1**

TCP DETAIL 1

Field Manual January 2018

NOTES:

- ① The approach sight distance to the flagger shall be at least the Decision Sight Distance (D).
- ② The ONE LANE ROAD AHEAD sign may be omitted when the posted speed limit is 40 mph or less.
- ③ The two-way taper should be 50 feet in length using 5 equally spaced channelizing devices.
4. If anticipating operational problems, the use of a Pilot Car (see Layout 18) may improve operations and safety.



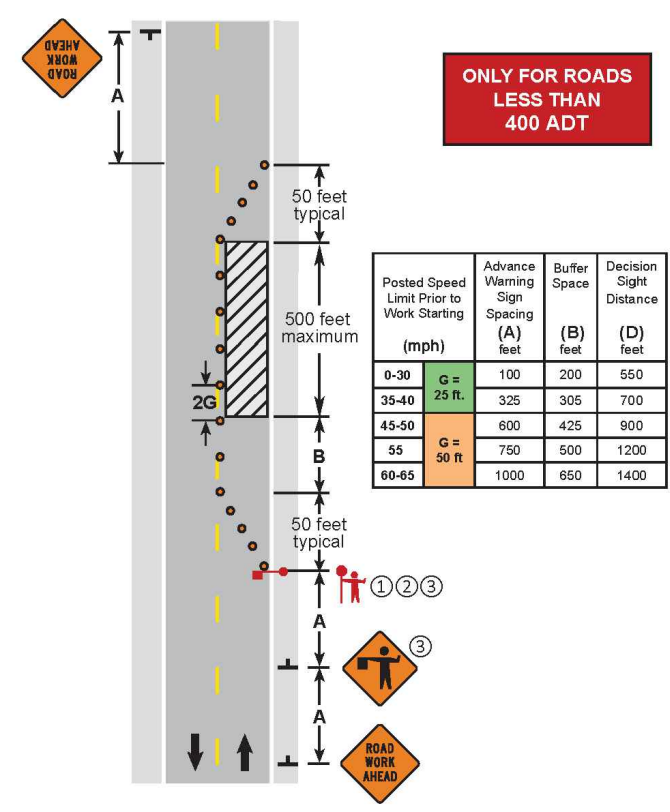
LANE CLOSURE, TWO FLAGGERS
TWO-LANE, TWO-WAY ROAD
3 DAYS or LESS
6K-16 LAYOUT 16

TCP DETAIL 2

Field Manual January 2018

NOTES:

- ① The approach sight distance to the flagger shall be at least the Decision Sight Distance (D).
- ② If the flagger's ability to see oncoming motorists beyond the work space is less than the Decision Sight Distance (D), two flaggers shall be used - See Layout 16.
- ③ The Flagger and Flagger Ahead sign may be omitted if the operation is during daylight hours, 12 hours or less, and traffic is able to self-regulate.
4. If the work space must be left unattended at night use Layout 14.



LANE CLOSURE, ONE FLAGGER
TWO-LANE, TWO-WAY ROAD
3 DAYS or LESS
6K-4 LAYOUT 4

FIBERHOOD:
MPGV-MN-1-18

ENGINEER:
hbK
UTILITY ENGINEERING SOLUTIONS
A QUANTA SERVICES COMPANY
921 WEST VAN BUREN, SUITE 100
CHICAGO, IL 60607
PHONE: (312) 432-0076 FAX: (312) 432-0231
STATE OF ILLINOIS, DEPARTMENT OF PROFESSIONAL REGULATION, LICENSE NO. 184-002308

OWNER/DEVELOPER:
gatewayfiber
275 WEST SERVICE RD
SUITE O
WRIGHT CITY, MO 63390

TITLE:
PROPOSED FIBER - OPTIC INSTALLATION
75TH AVE N & RANIER LN N
MAPLE GROVE, MN

REV	DATE	DESCRIPTION	BY
00	11/27/24	TCP	ASV
01			
02			
03			
04			
05			
06			
07			
08			
09			
10			
11			

DRAWN BY: ASV
CHECKED BY: AJR
APPROVED BY: NFJ

PROJECT NUMBER: 24-0177
DATE DRAWN: 11/27/24

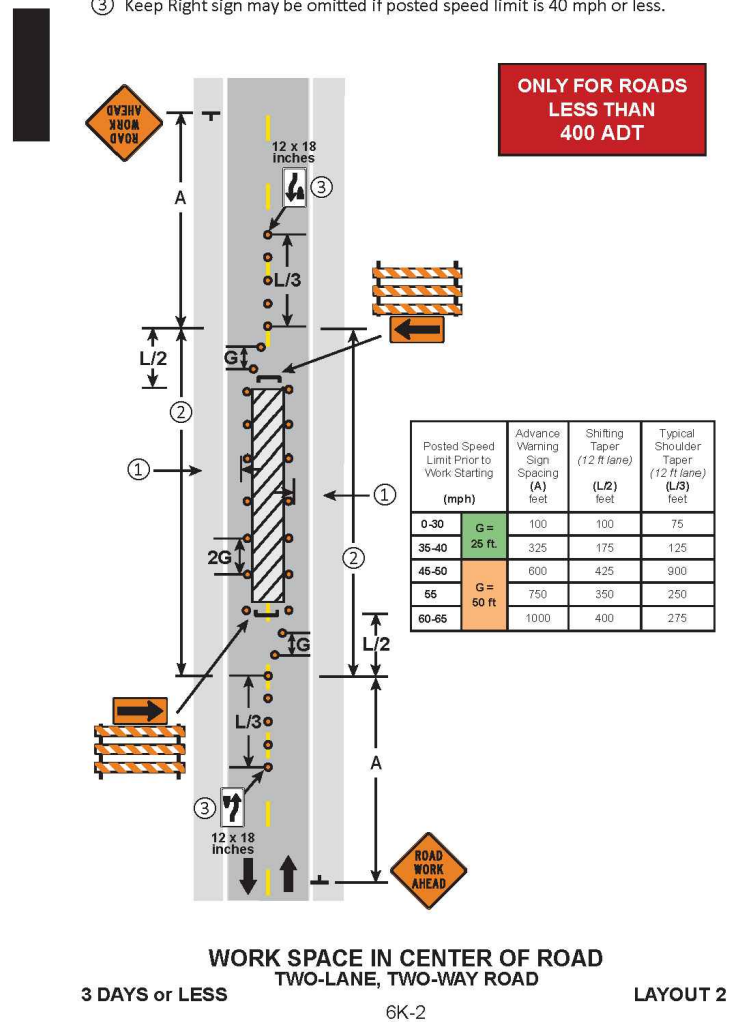
SHEET: **TC2**

TCP DETAIL 3

Field Manual January 2018

NOTES:

- ① Minimum drivable surface outside of the channelizing devices shall be 10 feet.
- ② Parking and stopping should be prohibited along the work area and tapers.
- ③ Keep Right sign may be omitted if posted speed limit is 40 mph or less.

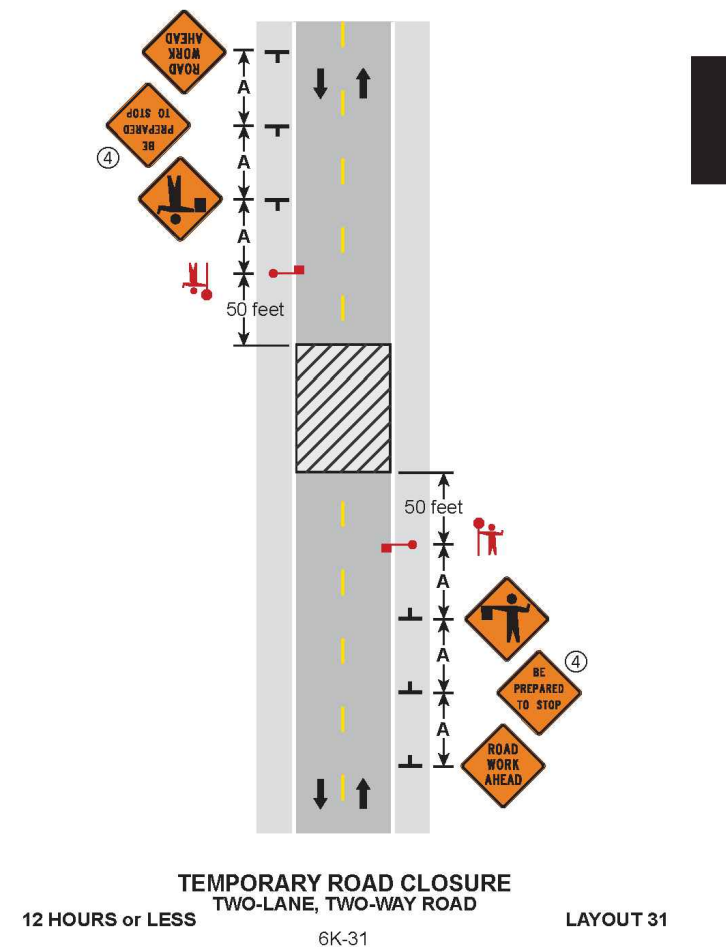


TCP DETAIL 4

Field Manual January 2018

NOTES:

- 1. Road authority shall be contacted prior to closure.
- 2. If the volume is less than 400 ADT, traffic control devices may be substituted with law enforcement.
- 3. Traffic should not be stopped for intervals of greater than 15 minutes.
- ④ The BE PREPARED TO STOP sign may be omitted when the posted speed limit is 40 mph or less.



FIBERHOOD:
MPGV-MN-1-18

ENGINEER:
hbk
UTILITY
CONSTRUCTION
SOLUTIONS
A QUANTA SERVICES COMPANY
921 WEST VAN BUREN, SUITE 100
CHICAGO, IL 60607
PHONE: (312) 432-0076 FAX: (312) 432-0231
STATE OF ILLINOIS, DEPARTMENT OF PROFESSIONAL
REGULATION, LICENSE NO. 184-002308

OWNER/DEVELOPER:
gatewayfiber
275 WEST SERVICE RD
SUITE O
WRIGHT CITY, MO 63390

TITLE:
**PROPOSED FIBER - OPTIC
INSTALLATION
75TH AVE N & RANIER LN N
MAPLE GROVE, MN**

REVISIONS

REV	DATE	DESCRIPTION	BY
00	11/27/24	TCP	ASV
01			
02			
03			
04			
05			
06			
07			
08			
09			
10			
11			

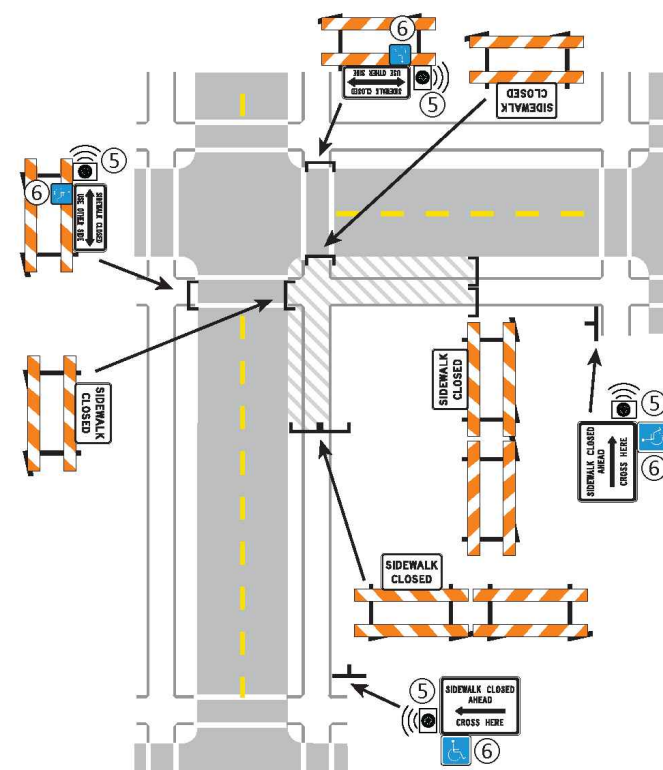
DRAWN BY:	CHECKED BY:	APPROVED BY:
ASV	AJR	NFJ

PROJECT NUMBER: **24-0177**
DATE DRAWN: **11/27/24**

SHEET: **TC3**

TCP DETAIL 5

Field Manual January 2018



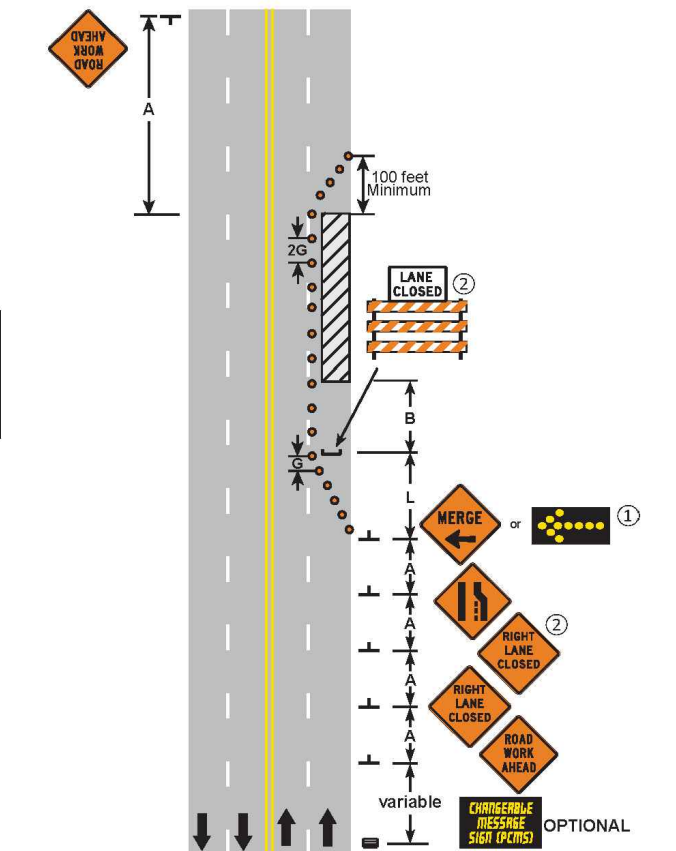
ALTERNATE PEDESTRIAN ROUTE
CROSSWALK CLOSURES AND PEDESTRIAN DETOURS
 3 DAYS or LESS LAYOUT 88b
 6K-88b LAYOUT 88a & b

TCP DETAIL 6

Field Manual January 2018

NOTES:

- ① The Flashing Arrow Board shall be used where the posted speed limit is 45 mph or greater, and shall be placed on the shoulder. If there is no shoulder, or the shoulder is too narrow, place at the end of the taper in lieu of the Type III barricade assembly.
- ② The RIGHT LANE CLOSED sign and/or LANE CLOSED sign may be omitted when the posted speed limit is 40 mph or less.
3. If there is a shoulder, close the shoulder using a shoulder taper.



RIGHT LANE CLOSURE
 MULTI-LANE UNDIVIDED ROAD
 3 DAYS or LESS LAYOUT 42
 6K-42

FIBERHOOD:
MPGV-MN-1-18

ENGINEER:

 A QUANTA SERVICES COMPANY
 921 WEST VAN BUREN, SUITE 100
 CHICAGO, IL 60607
 PHONE: (312) 432-0076 FAX: (312) 432-0231
 STATE OF ILLINOIS, DEPARTMENT OF PROFESSIONAL
 REGULATION, LICENSE NO. 184-002308

OWNER/DEVELOPER:

 275 WEST SERVICE RD
 SUITE O
 WRIGHT CITY, MO 63390

TITLE:
**PROPOSED FIBER - OPTIC
 INSTALLATION**
 75TH AVE N & RANIER LN N
 MAPLE GROVE, MN

REVISIONS		
REV	DATE	DESCRIPTION
00	11/27/24	TCP
01		
02		
03		
04		
05		
06		
07		
08		
09		
10		
11		

DRAWN BY:	CHECKED BY:	APPROVED BY:
ASV	AJR	NFJ

PROJECT NUMBER: **24-0177**
 DATE DRAWN: **11/27/24**

SHEET:
TC4