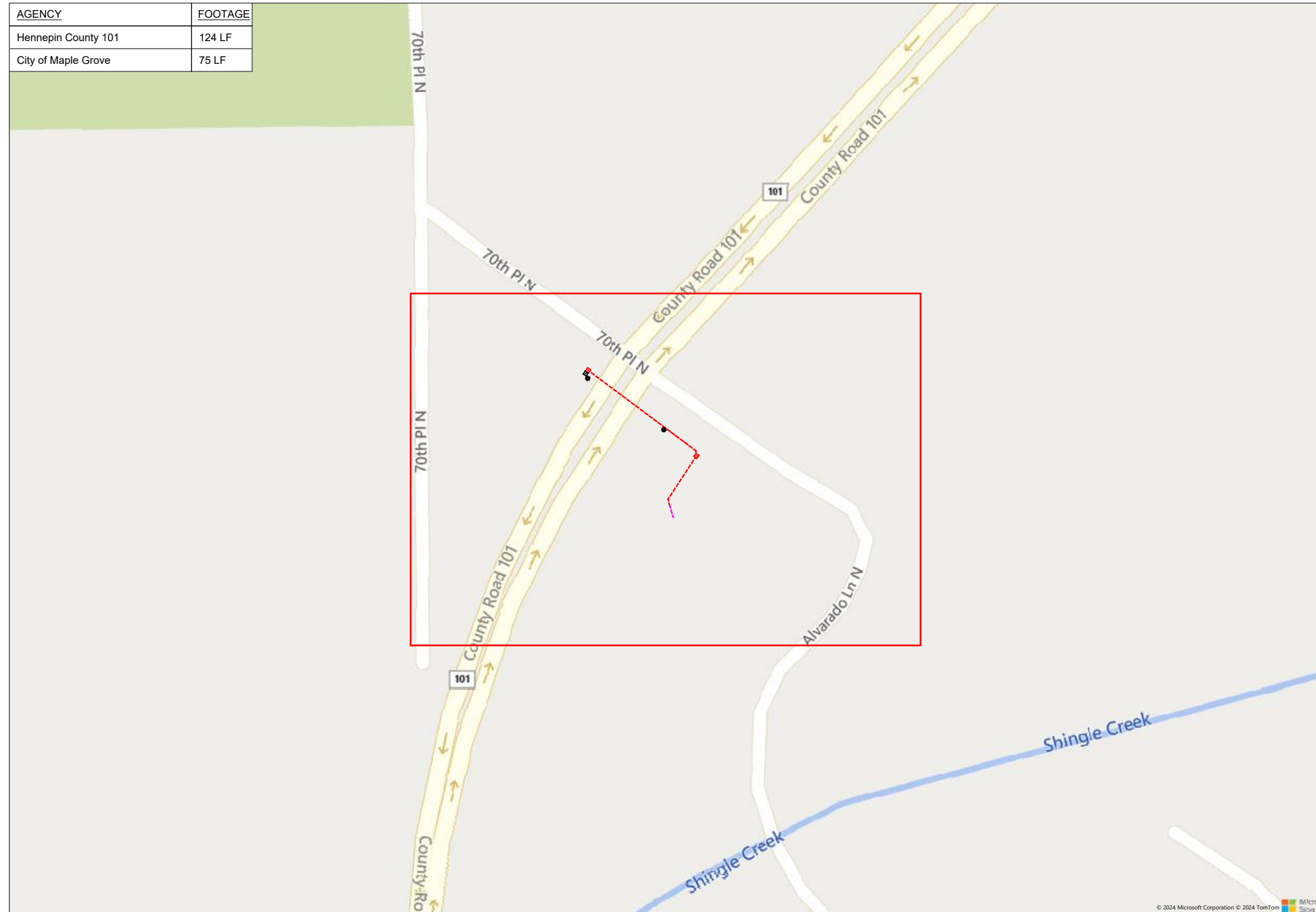


119432 Comcast Topline Federal Credit Union

AGENCY	FOOTAGE
Hennepin County 101	124 LF
City of Maple Grove	75 LF



7015 Alvarado Lane, Maple Grove, MN 55311



1" = 100'

Route	119432 Comcast Topline
City	Maple Grove
County	Hennepin
Filename	119432 Comcast Topline
Work Order #	119432



160 2nd St SW
Perham, MN 56573
(218) 346-5500

TRACKING

Slaked By:	HF	6/18/24
Drafted By:	WT	6/25/24
Project Manager	Kelly Bard	763-270-6179
As-Built By:	-	-
Revision	-	-

Construction Totals	
Route Footage	294'
Total Underground	294'
Total Aerial	0'
Underground (New)	278'
Aerial (New)	0'
Overpull (Ex Duct)	16'
Overlash (Ex Strand)	0'
Plow	0'
Bore	278'
New Vaults	2
New Peds	0

GSOC
GOPHER STATE ONE CALL
1-800-252-1116
www.gopherstateonecall.org

Prepared by:
 compass consultants inc.
Perham, MN 218-346-3600
TrustCompass.com

OVERVIEW

Legend

Fiber Linetypes

	Proposed Underground Fiber - Bore
	Proposed Underground Fiber - Plow
	Proposed UG Fiber in Existing Duct
	Existing Underground Fiber
	Proposed Aerial Fiber
	Proposed Aerial Overlash
	Existing Aerial Fiber
	Proposed Aerial Strand
	Existing Aerial Strand

Other Linetypes

	Whiteline
	Rail Road
	Fence
	Retaining Wall
	Storm Sewer
	Sanitary Sewer
	Gas Line
	Tele./Comm. Line
	Water Line
	Electric Line
	Street light/Traffic signal
	District Cooling
	District Heating
	Force Main
	Other Utility or Unknown
	Utility Easement

Abbreviations

- ABD - Abandoned Utility
- CL - Center Line
- WL - White Line
- R/W - Right of Way
- BOC - Back of Curb
- FC - Front of Curb
- EOR - Edge of Road
- S/W - Sidewalk
- HH - Handhole
- MH - Manhole
- PRT - Preterminated Cable
- PRG - Pigtail Cable

Symbols

	Proposed Handhole
	Existing Handhole
	Reference Handhole
	Manhole
	Proposed Cabinet
	Existing Cabinet
	Bore Pit
	Proposed Splice Point
	Existing Splice Point
	Power Pole
	Proposed Slack Coil
	Existing Slack Coil
	Proposed Anchor/Down Guy
	Existing Anchor/Down Guy
	Proposed Riser
	Existing Riser
	Aerial Bond
	Aerial Ground
	BM53T - Fiber Marker
	BM53 - Fiber Marker
	Proposed PED
	Existing PED
	Proposed Splice Case
	Existing Splice Case
	Street Light
	Traffic Light
	Transformer
	Hydrant
	Catch Basin
	Tree
	AMW - Main Enclosure - J-Box Needed
	AMW - Main Enclosure - No J-Box Needed
	AMW - Stack Enclosure

Materials	
48 Fiber	644
1 X 1.25" Duct	90
2 X 1.25" Duct	188
Vault (24x30)	2
Ground Rod - 8'	2



1" = -

Route	119432 Comcast Topline
City	Maple Grove
County	Hennepin
Filename	119432 Comcast Topline
Work Order #	119432

arvig

160 2nd St SW
Perham, MN 56573
(218) 346-5500

TRACKING	
Staked By:	HF 6/18/24
Drafted By:	WT 6/25/24
Project Manager	Kelly Bard 763-270-6179
As-Built By:	-
Revision	-

Construction Totals	
Route Footage	294'
Total Underground	294'
Total Aerial	0'
Underground (New)	278'
Aerial (New)	0'
Overpull (Ex Duct)	16'
Overlash (Ex Strand)	0'
Plow	0'
Bore	278'
New Vaults	2
New Peds	0

GSOC
GOPHER STATE ONE CALL
1-800-252-1116
www.gopherstateonecall.org

Prepared by:

compass consultants inc.
Perham, MN 218-346-3600
TrustCompass.com

LEGEND

Existing Access Points



MGV-016-1



MGV-016-1



1" = -

Route
119432 Comcast Topline
City
Maple Grove
County
Hennepin
Filename
119432 Comcast Topline
Work Order #
119432



160 2nd St SW
Perham, MN 56573
(218) 346-5500

TRACKING

Staked By:	HF	6/18/24
Drafted By:	WT	6/25/24
Project Manager	Kelly Bard	763-270-6179
As-Built By:	-	-
Revision	-	-

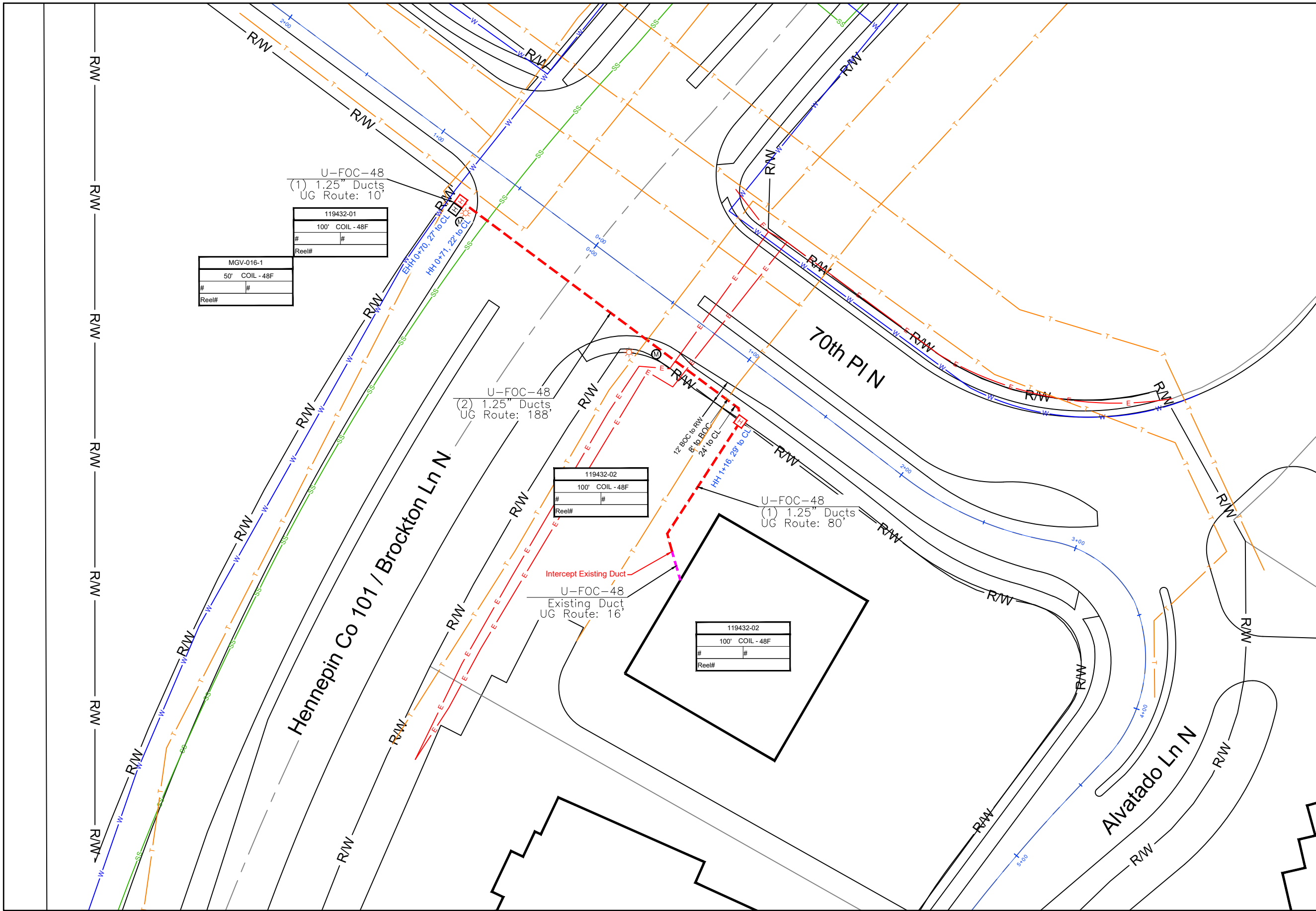
GSOC

GOPHER STATE ONE CALL
1-800-252-1116
www.gopherstateonecall.org

Prepared by:



EXISTING AP



U-FOC-48
(1) 1.25" Ducts
UG Route: 10'

119432-01
100' COIL - 48F
#
Reel#

MGV-016-1
50' COIL - 48F
#
Reel#

U-FOC-48
(2) 1.25" Ducts
UG Route: 188'

119432-02
100' COIL - 48F
#
Reel#

U-FOC-48
Existing Duct
UG Route: 16'

119432-02
100' COIL - 48F
#
Reel#



1" = 50'

Route	119432 Comcast Topline
City	Maple Grove
County	Hennepin
Filename	119432 Comcast Topline
Work Order #	119432

160 2nd St SW
Perham, MN 56573
(218) 346-5500

TRACKING	
Staked By:	HF 6/18/24
Drafted By:	WT 6/25/24
Project Manager	Kelly Bard 763-270-6179
As-Built By:	-
Revision	-

GSOC
GOPHER STATE ONE CALL
1-800-252-1116
www.gopherstateonecall.org

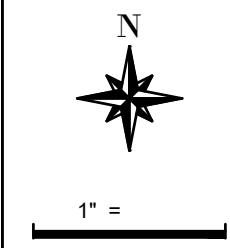
Prepared by:
 compass consultants inc.
Perham, MN 218-346-3600
TrustCompass.com

119432-01

Date	From Vault	To Vault	Cable/Duct	Reel Number	Start #	End #	Total	Notes:

Vault Size	Vault #	Ground Rod	Vault Size	Vault #	Ground Rod	Vault Size	Vault #	Ground Rod
Vault			Vault			Vault		
Vault			Vault			Vault		
Vault			Vault			Vault		
Vault			Vault			Vault		
Locate Post								
Fiber Marker								
Tracer Wire								

FOR CONSTRUCTION USE ONLY



Route
119432 Comcast Topline
City
Maple Grove
County
Hennepin
Filename
119432 Comcast Topline
Work Order #
119432



TRACKING
Staked By:
HF 6/18/24
Drafted By:
WT 6/25/24
Project Manager
Kelly Bard 763-270-6179
As-Built By:
- -
Revision
- -



Tally Sheet