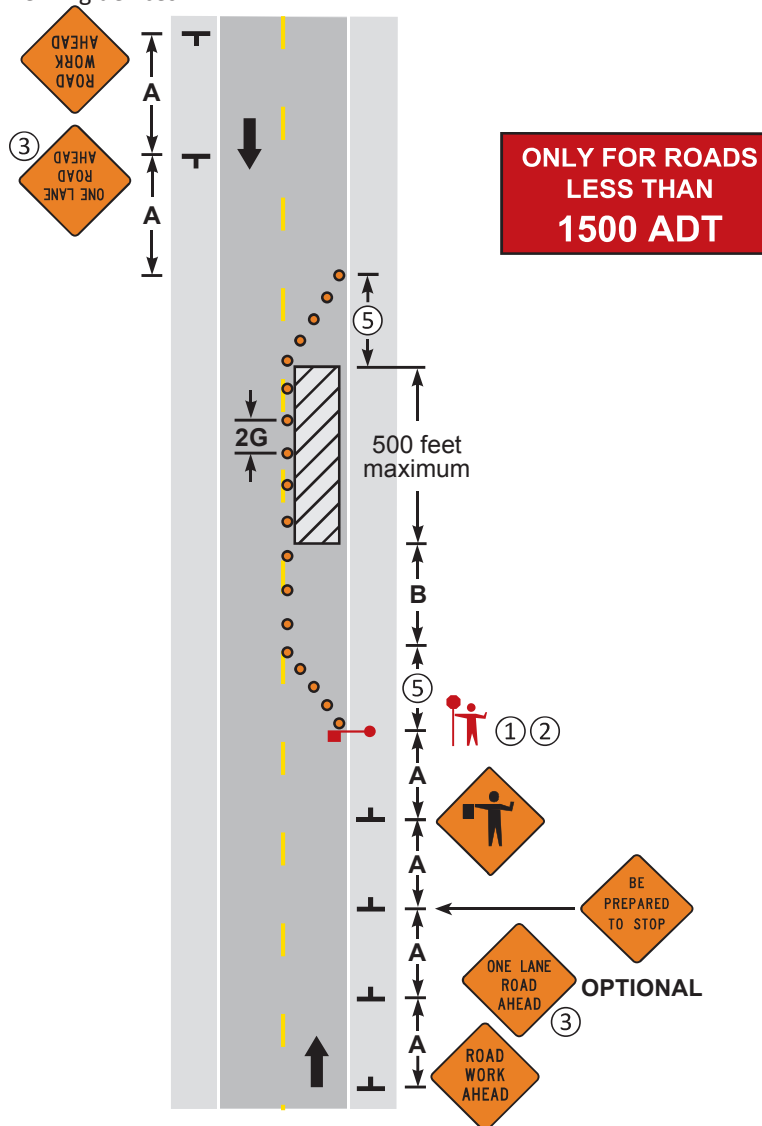


**NOTES:**

- ① The approach sight distance to the flagger shall be at least the Decision Sight Distance (**D**).
- ② If the flagger's ability to see oncoming motorists beyond the work space is less than the Decision Sight Distance (**D**), two flaggers shall be used - See [Layout 16](#).
- ③ The ONE LANE ROAD AHEAD sign may be omitted when the posted speed limit is 40 mph or less.
4. If the work space must be left unattended at night use [Layout 14](#).
- ⑤ The two-way taper should be 50 feet in length and using 5 equally spaced channelizing devices.



**LANE CLOSURE, ONE FLAGGER  
TWO-LANE, TWO-WAY ROAD**

3 DAYS or LESS

6K-15

LAYOUT 15