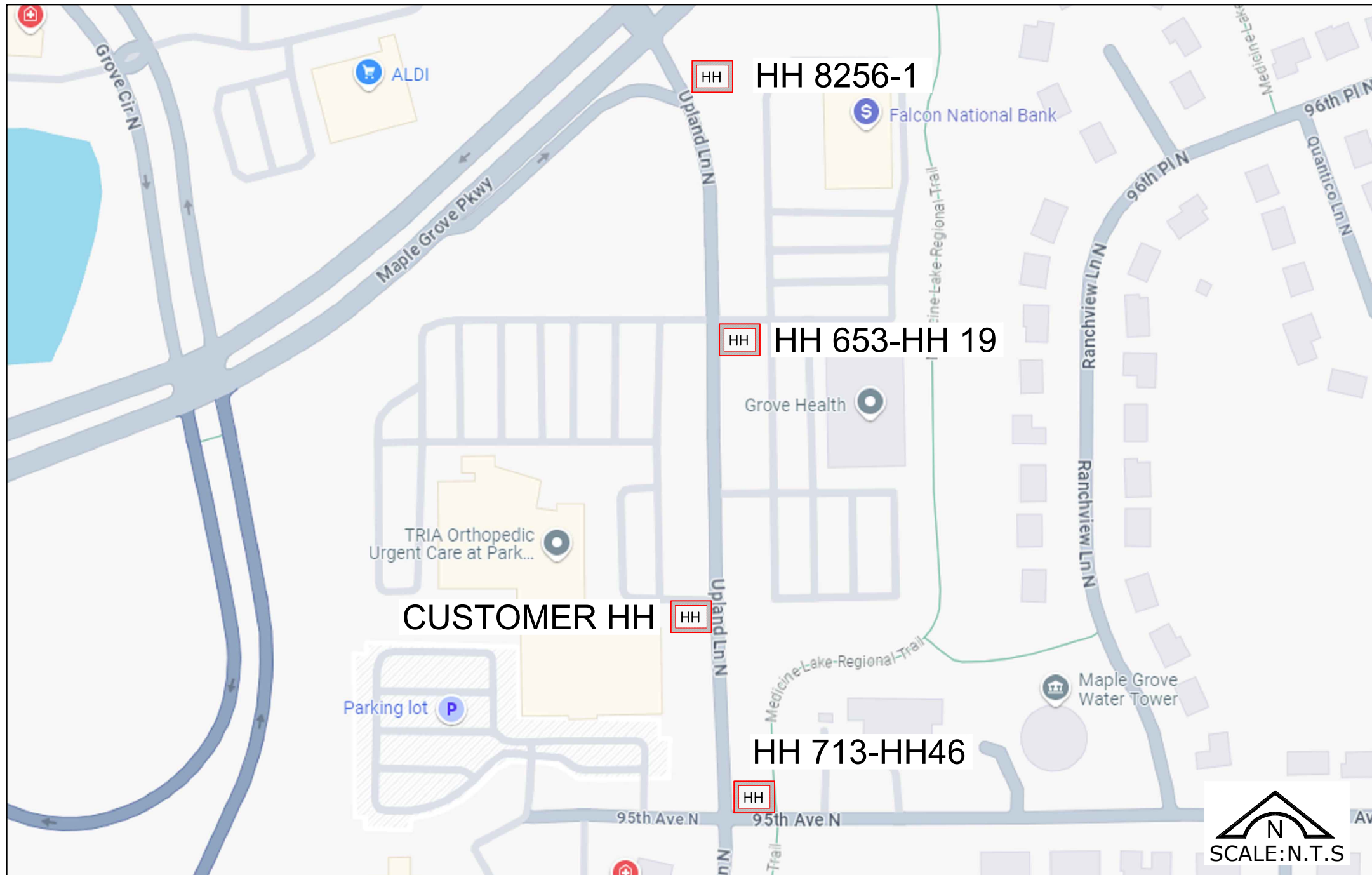


WORK LOCATIONS



VICINITY MAP

TRAFFIC CONTROL PLAN

PROJECT ID: P.263585
WC CLLI: MPGVMNXA
DATE: 10/28/24
SCOPE: HH ACCESS



LUMEN ENGINEER: JACOB KAUTZ
DRAWN BY: PEARCE SERVICES/ AKASH
PHONE: (202) - 538 - 2014
SHEET: 01 OF 07

ISSUE: 00



ADDRESS: 15800 95TH AVE N,
MAPLE GROVE, MN 55369
CITY: MAPLE GROVE
TOWNSHIP: S09-T119N-R22W

GENERAL TRAFFIC CONTROL NOTES:

1. FLAGGER ARE NOT PERMITTED TO STOP OF HOLD FREEWAY TRAFFIC .
2. TO DETERMINE SIGN SPACE A,B AND C USE "TRAFFIC CONTROL DEVICES (TCD) BY SPACING TABLE.
3. SCHEDULE SLOWDOWN DURING OFF PEAK TRAFFIC PERIOD.
4. INFORM LOCAL LAW ENFORCEMENT
5. USE TRUCK MOUNTED ATTENUATORS (TMA) ON PILOT CARS.
6. USE ONE PILOT CAR PER LANE . EACH PILOT CAR SHALL HAVE ARROW PANNEL IN CAUTION MODE "DO NOT PASS "(R4-1) SIGN OR A TRUCK MOUNTED PCMS .(DO NOT PASS /SLOW VEHICLES)

Decision Sight Distance (D)	
Posted Speed (mph)	Decision Sight Distance (feet)
0 - 30	550
35 - 40	700
45 - 50	900
55	1200
60 - 65	1400
70 - 75	1600

-TAPER LENGTH CRITERIA FOR TEMPORARY TRAFFIC CONTROL ZONE-

TYPE OF TAPER	TAPER LENGTH (L)*
MERGING TAPER	AT LEAST L
SHIFTING TAPER	AT LEAST 0.5 L
SHOULDER TAPER	AT LEAST 0.33 L
ONE LANE, TWO-WAY TRAFFIC TAPER	50FT MINIMUM, 100FT MAXIMUM
DOWNSTREAM TAPER	50FT MINIMUM, 100FT MAXIMUM

-FORMULAS FOR DETERMINING TAPER LENGTH-

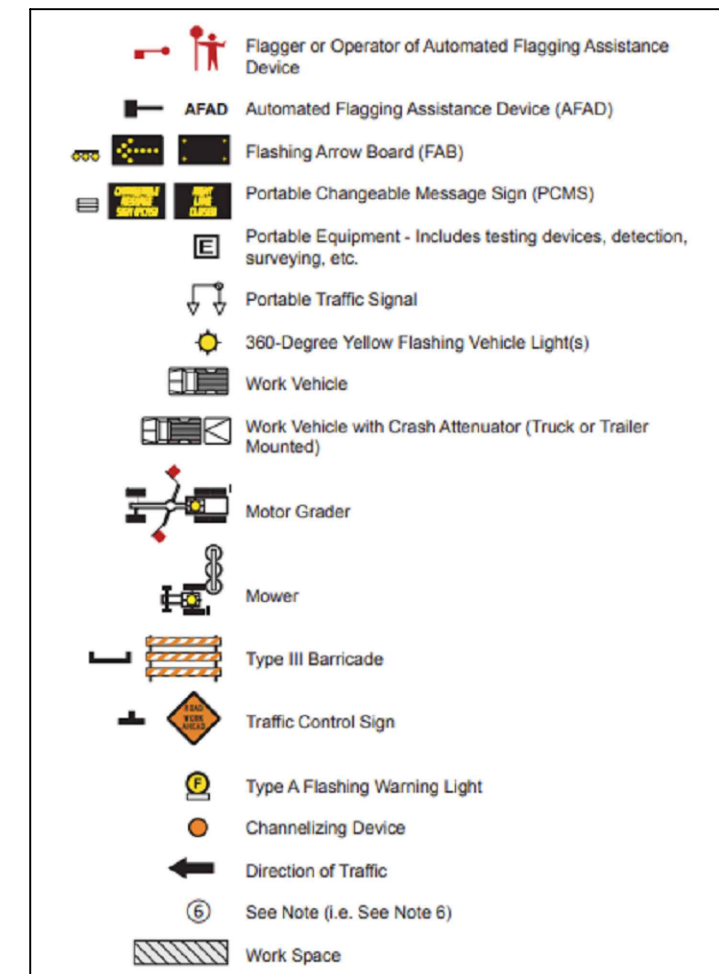
SPEED LIMIT (S)	TAPER LENGTH (L) FEET
40 MPH OR LESS	$L = \frac{WS^2}{60}$
45 MPH OR MORE	$L = WS$

WHERE: L= TAPER LENGTH IN METERS (FEET)
 W= WIDTH OF OFFSET IN METERS (FEET)
 S= POSTED SPEED LIMIT, OR OFF-PEAK 85TH-PERCENTILE SPEED PRIOR TO WORK STARTING, OR THE ANTICIPATED OPERATING SPEED IN KM/H (MPH)

Posted Speed Limit Prior to Work Starting (mph)	Advance Warning Sign Spacing (A) feet	Decision Sight Distance (D) feet	Taper Length (12 ft lane) (L) feet	Shifting Taper (12 ft lane) (L/2) feet	Typical Shoulder Taper (L/3) feet	Buffer Space (B) feet
0-30	G = 25 ft.	100	200	100	75	200
35-40		325	325	175	125	305
45-50	G = 50 ft.	600	600	300	200	425
55		750	700	350	250	500
60-65		1000	800	400	275	650
70-75		1200	900	450	300	820

CLEARANCE ZONE

Speed (mph)	Width (ft)
60 or greater	30
45-55	20
40	15
35 or less	10



TRAFFIC CONTROL PLAN

PROJECT ID: P.263585
 WC CLLI: MPGVMNXA
 DATE: 10/28/24
 SCOPE- HH ACCESS



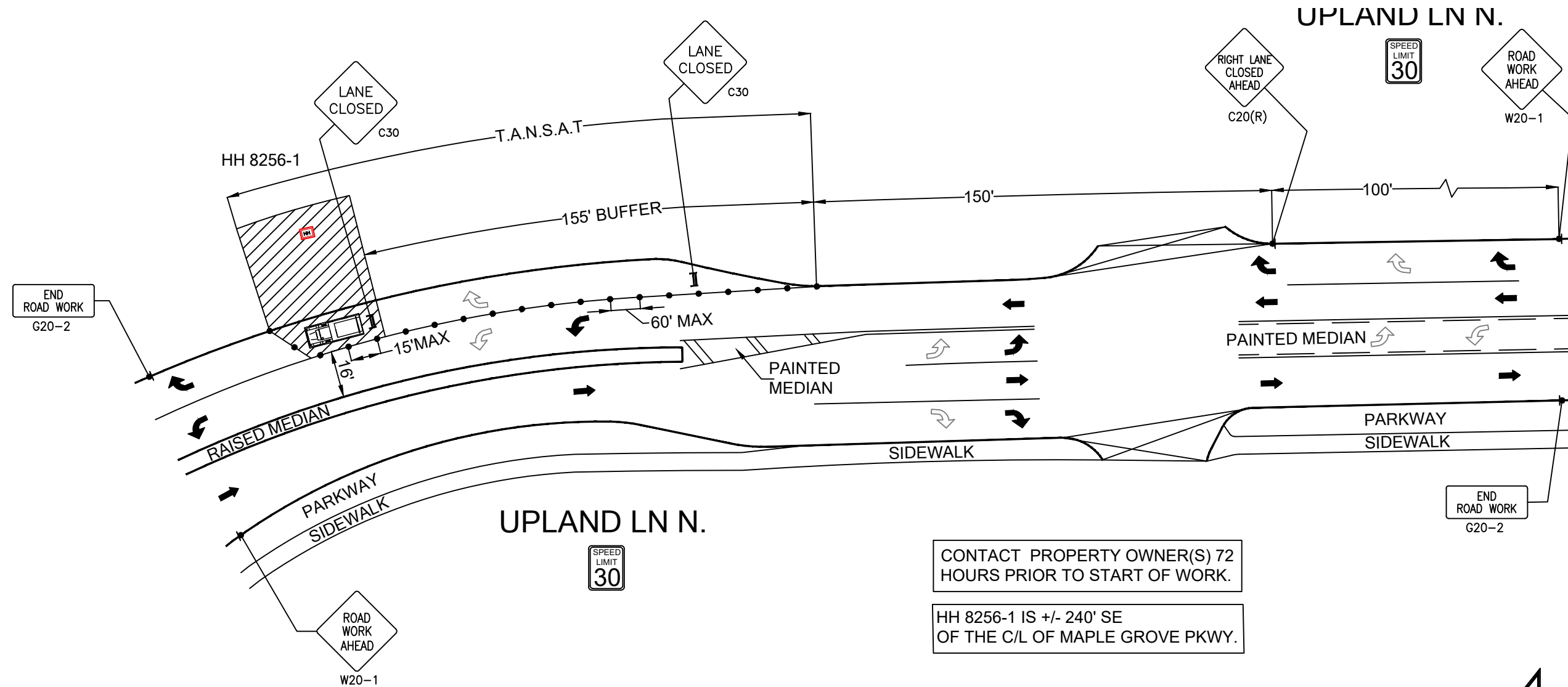
LUMEN ENGINEER: JACOB KAUTZ
 DRAWN BY: PEARCE SERVICES/ AKASH
 PHONE: (202) - 538 - 2014
 SHEET: 02 OF 07

ISSUE: 00

LUMEN

ADDRESS: 15800 95TH AVE N,
 MAPLE GROVE, MN 55369
 CITY: MAPLE GROVE
 TOWNSHIP: S09-T119N-R22W

9600 UPLAND LN N.
 MAPLE GROVE PKWY. & UPLAND LN N.
 HH 8256-1 ACCESS
 WORK AREA 1 OF 4



CONTACT PROPERTY OWNER(S) 72 HOURS PRIOR TO START OF WORK.

HH 8256-1 IS +/- 240' SE OF THE C/L OF MAPLE GROVE PKWY.

LEGEND

- = PORTABLE FLASHING BEACON (P.F.B.)
- = TYPE III BARRICADE W/SIGN (5'H x 4'W)
- = TYPE II BARRICADE W/SIGN (3'H x 2'W)
- = 28" (11cm) TRAFFIC CONES W/ 13" (5cm) REFLECTIVE SLEEVE FOR DAY/NIGHT USE OR DELINEATORS IF DAY USE ONLY
- = TRAFFIC CONE WITH CLIP ON SIGN
- = TYPE I W/ SIGN
- = EXISTING SIGN
- = SIGNALIZED INTERSECTION
- = FLASHING ARROWBOARD
- = HIGH LEVEL WARNING DEVICE (FLAGTREE)
- = FLAGGER
- = TANSAT = TOW AWAY NO STOPPING ANY TIME
- = EXISTING DRIVEWAY
- = WORK ZONE (ACTIVITY AREA) LIMITS
- = DIRECTION OF TRAFFIC



SCALE: 1:40

TRAFFIC CONTROL PLAN

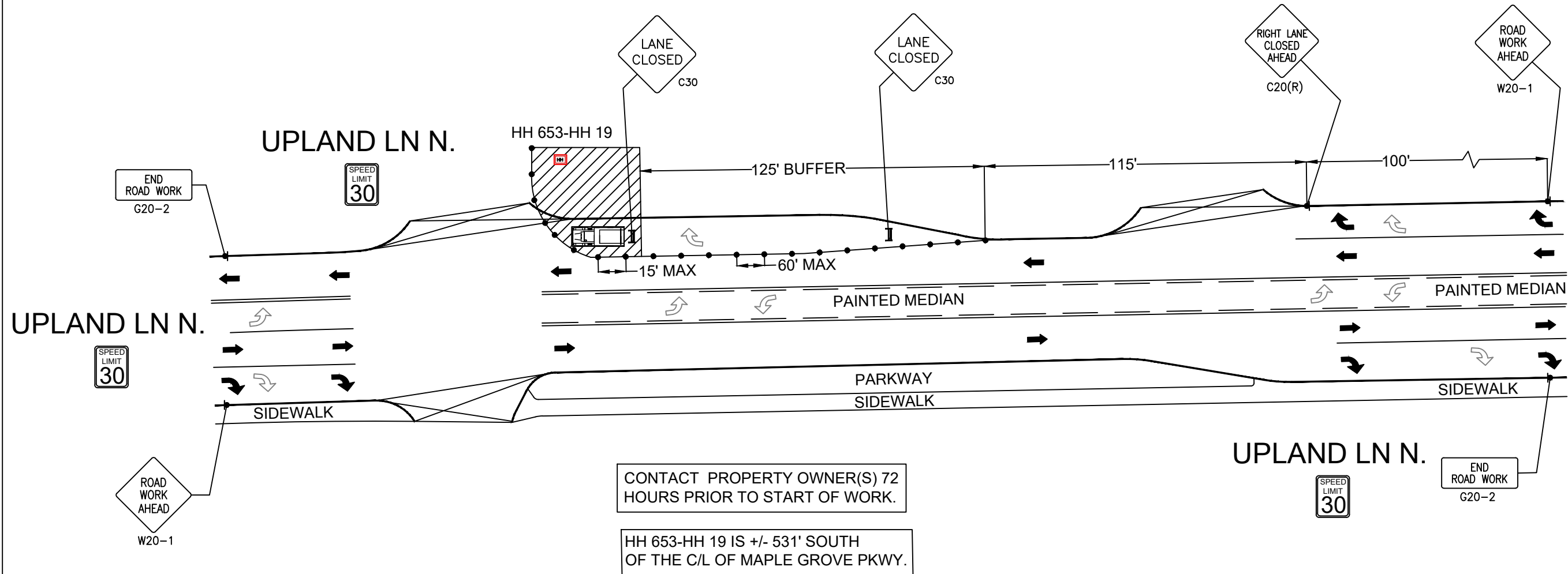
PROJECT ID: P.263585
 WC CLLI: MPGVMNXA
 CITY: MAPLE GROVE
 LUMEN ENGINEER: JACOB KAUTZ
 DRAWN BY: PEARCE SERVICES/ AKASH
 PHONE: (202) - 538 - 2014

LUMEN

TOWNSHIP: S26-T51N-R13W
 ISSUE: 00
 DATE: 10/28/24
 SHEET: 03 OF 07

PEARCE SERVICES

**9585 UPLAND LN N.
 MAPLE GROVE PKWY. & UPLAND LN N.
 HH 653-HH 19 ACCESS
 WORK AREA 2 OF 4**



LEGEND

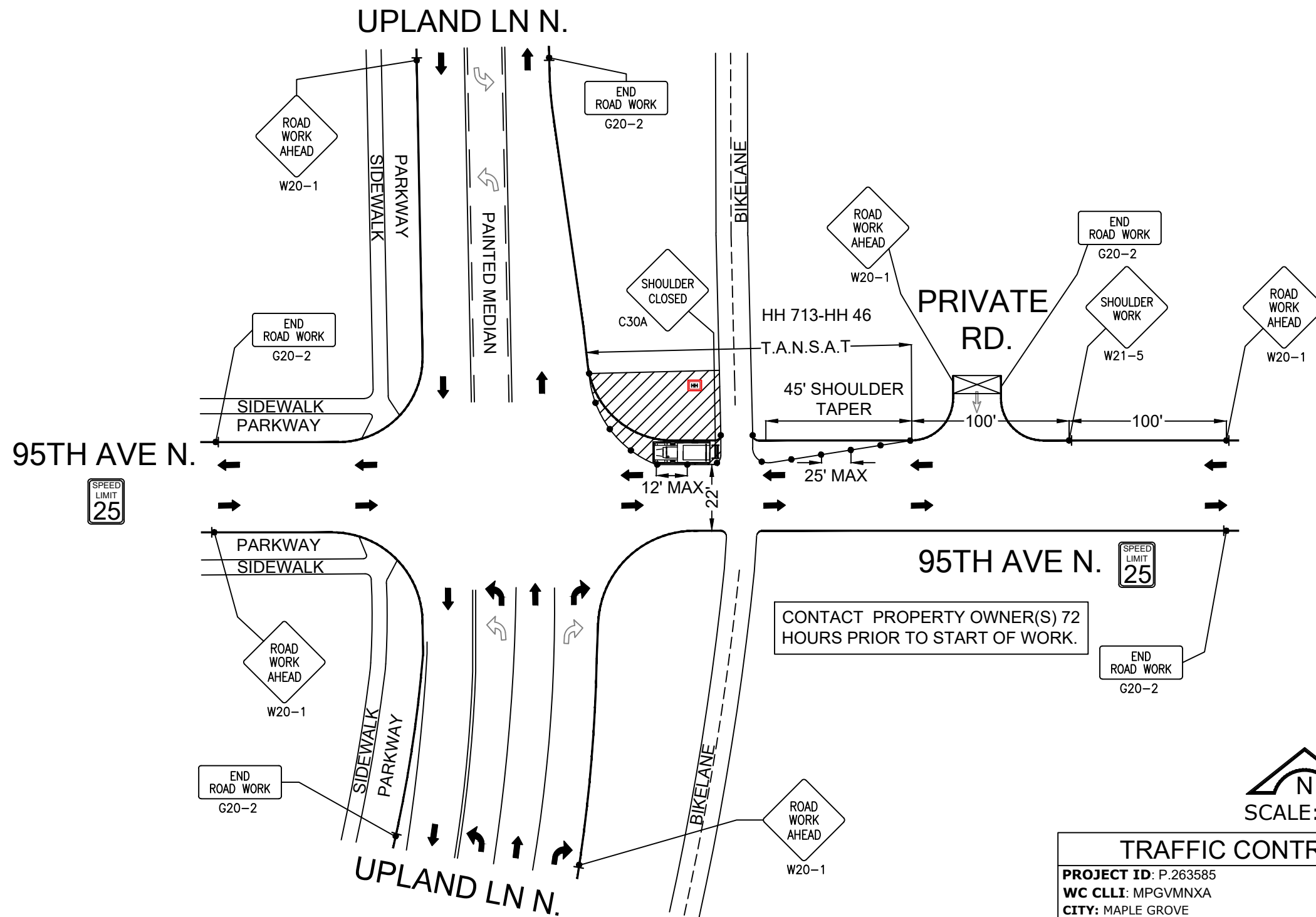
- = PORTABLE FLASHING BEACON (P.F.B.)
- = TYPE III BARRICADE W/SIGN (5'H x 4'W)
- = TYPE II BARRICADE W/SIGN (3'H x 2'W)
- = 28" (11cm) TRAFFIC CONES W/ 13" (5cm) REFLECTIVE SLEEVE FOR DAY/NIGHT USE OR DELINEATORS IF DAY USE ONLY
- = TRAFFIC CONE WITH CLIP ON SIGN
- = TYPE I W/ SIGN
- = EXISTING SIGN
- = SIGNALIZED INTERSECTION
- = FLASHING ARROWBOARD
- = HIGH LEVEL WARNING DEVICE (FLAGTREE)
- = FLAGGER
- TANSAT = TOW AWAY NO STOPPING ANY TIME
- = EXISTING DRIVEWAY
- = WORK ZONE (ACTIVITY AREA) LIMITS
- = DIRECTION OF TRAFFIC



SCALE: 1:40

TRAFFIC CONTROL PLAN	
PROJECT ID: P.263585 WC CLLI: MPGVMNXA CITY: MAPLE GROVE LUMEN ENGINEER: JACOB KAUTZ DRAWN BY: PEARCE SERVICES/ AKASH PHONE: (202) - 538 - 2014	
TOWNSHIP: S26-T51N-R13W ISSUE: 00 DATE: 10/28/24 SHEET: 04 OF 07	

15676 95TH AVE N.
 95TH AVE N. & UPLAND LN N.
 HH 713-HH 46 ACCESS
 WORK AREA 3 OF 4

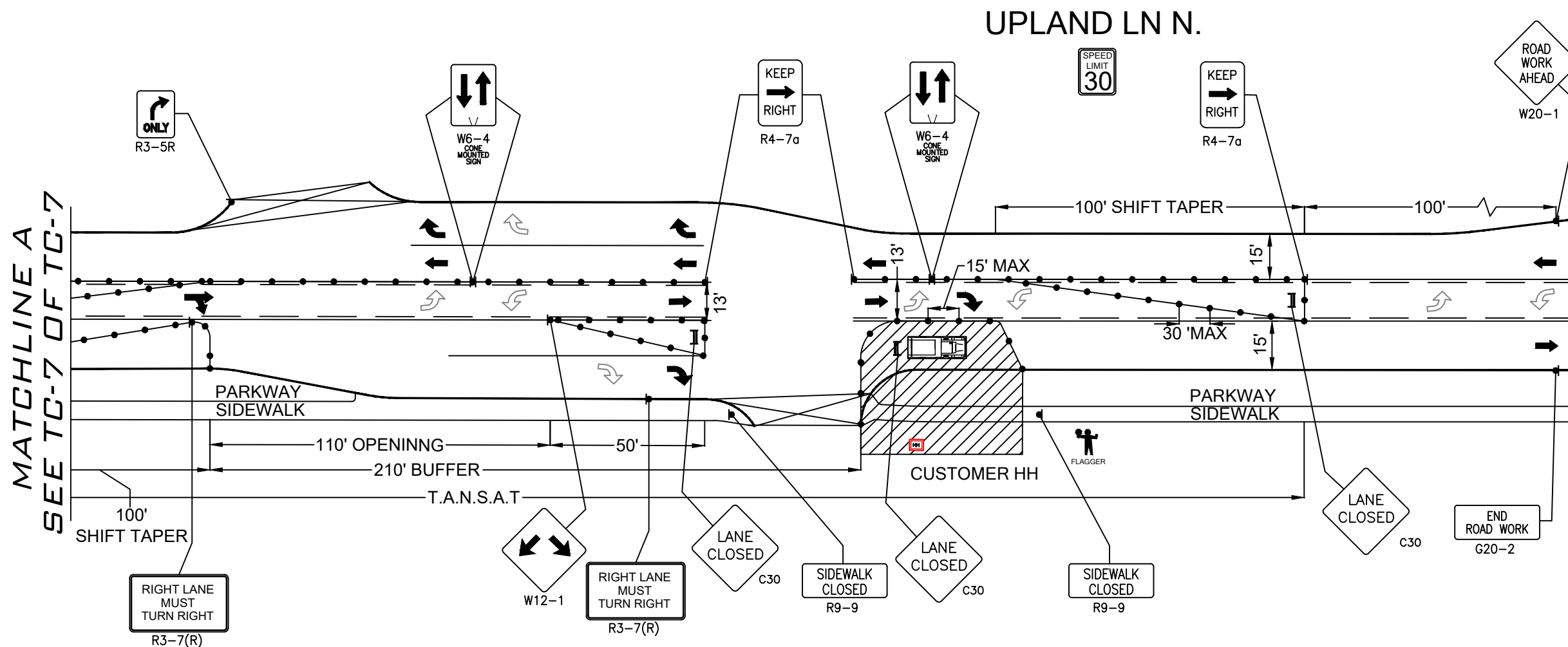


LEGEND	
	= PORTABLE FLASHING BEACON (P.F.B.)
	= TYPE III BARRICADE W/SIGN (5'H x 4'W)
	= TYPE II BARRICADE W/SIGN (3'H x 2'W)
	= 28" (11cm) TRAFFIC CONES W/ 13" (5cm) REFLECTIVE SLEEVE FOR DAY/NIGHT USE OR DELINEATORS IF DAY USE ONLY
	= TRAFFIC CONE WITH CLIP ON SIGN
	= TYPE I W/ SIGN
	= EXISTING SIGN
	= SIGNALIZED INTERSECTION
	= FLASHING ARROWBOARD
	= HIGH LEVEL WARNING DEVICE (FLAGTREE)
	= FLAGGER
	TANSAT = TOW AWAY NO STOPPING ANY TIME
	= EXISTING DRIVEWAY
	= WORK ZONE (ACTIVITY AREA) LIMITS
	= DIRECTION OF TRAFFIC



TRAFFIC CONTROL PLAN	
PROJECT ID: P.263585 WC CLLI: MPGVMNXA CITY: MAPLE GROVE LUMEN ENGINEER: JACOB KAUTZ DRAWN BY: PEARCE SERVICES/ AKASH PHONE: (202) - 538 - 2014	
TOWNSHIP: S26-T51N-R13W ISSUE: 00 DATE: 10/28/24 SHEET: 05 OF 07	

**9502 UPLAND LN N.
 MAPLE GROVE PKWY. & UPLAND LN N.
 CUSTOMER HH ACCESS
 WORK AREA 4 OF 4**



LEGEND

- = PORTABLE FLASHING BEACON (P.F.B.)
- = TYPE III BARRICADE W/SIGN (5'H x 4'W)
- = TYPE II BARRICADE W/SIGN (3'H x 2'W)
- = 28" (11cm) TRAFFIC CONES W/ 13" (5cm) REFLECTIVE SLEEVE FOR DAY/NIGHT USE OR DELINEATORS IF DAY USE ONLY
- = TRAFFIC CONE WITH CLIP ON SIGN
- = TYPE I W/ SIGN
- = EXISTING SIGN
- = SIGNALIZED INTERSECTION
- = FLASHING ARROWBOARD
- = HIGH LEVEL WARNING DEVICE (FLAGTREE)
- = FLAGGER
- = TANSAT = TOW AWAY NO STOPPING ANY TIME
- = EXISTING DRIVEWAY
- = WORK ZONE (ACTIVITY AREA) LIMITS
- = DIRECTION OF TRAFFIC

PEDESTRIAN CONTROL NOTES:

A DEDICATED INDIVIDUAL WILL BE ASSIGNED THE RESPONSIBILITY OF ESCORTING PEDESTRIANS THROUGH THE WORK AREA IN ACCORDANCE WITH THREE MAJOR CONSIDERATIONS:

1. PEDESTRIANS SHOULD NOT BE LED INTO DIRECT CONFLICT WITH WORK SITE VEHICLES, EQUIPMENT OR OPERATIONS
2. PEDESTRIANS SHOULD NOT BE LED INTO DIRECT CONFLICT WITH MAINLINE TRAFFIC MOVING THROUGH OR AROUND THE WORK SITE.
3. PEDESTRIANS SHOULD BE PROVIDED WITH A REASONABLY SAFE, CONVENIENT AND ACCESSIBLE PATH THAT REPLICATES AS NEARLY AS PRACTICAL THE MOST DESIRABLE CHARACTERISTICS OF THE EXISTING SIDEWALK OR FOOTPATH

FLAGGER TO ASSIST PEDESTRIANS THROUGH WORK AREA (SEE PED NOTES)

PLACE AT THE CROSSWALK OF MAPLE GROVE PKWY. & UPLAND LN N. R9-11(L)

CONTACT PROPERTY OWNER(S) 72 HOURS PRIOR TO START OF WORK.

CUSTOMER HH IS +/- 945' SOUTH OF THE C/L OF MAPLE GROVE PKWY.

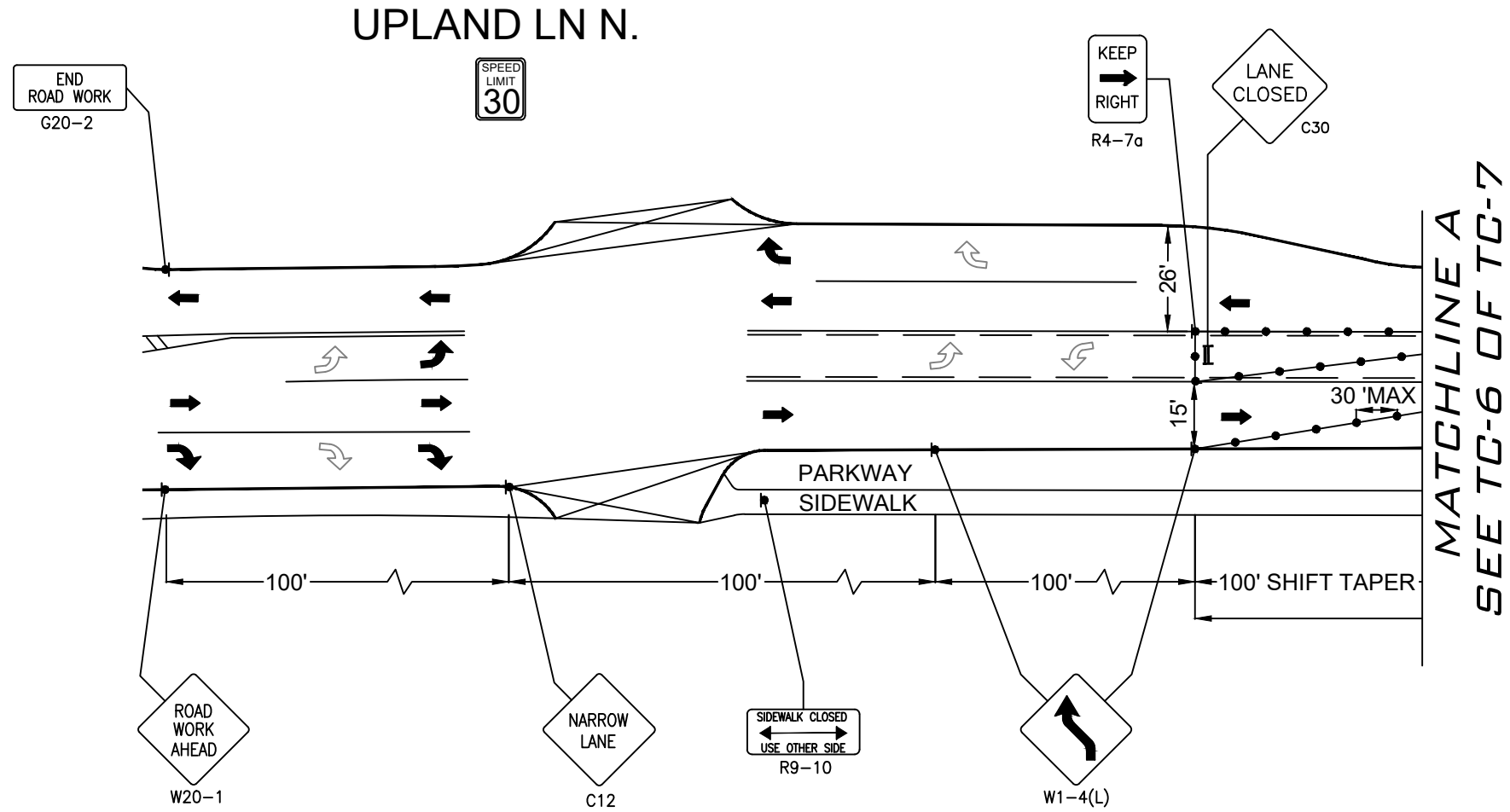


SCALE: 1:40

TRAFFIC CONTROL PLAN

PROJECT ID: P.263585 WC CLLI: MPGVMNXA CITY: MAPLE GROVE LUMEN ENGINEER: JACOB KAUTZ DRAWN BY: PEARCE SERVICES/ AKASH PHONE: (202) - 538 - 2014	
TOWNSHIP: S26-T51N-R13W ISSUE: 00 DATE: 10/28/24 SHEET: 06 OF 07	

9502 UPLAND LN N.
 MAPLE GROVE PKWY. & UPLAND LN N.
 CUSTOMER HH ACCESS
 WORK AREA 4 OF 4



LEGEND

- = PORTABLE FLASHING BEACON (P.F.B.)
- = TYPE III BARRICADE W/SIGN (5'H x 4'W)
- = TYPE II BARRICADE W/SIGN (3'H x 2'W)
- = 28" (11cm) TRAFFIC CONES W/ 13" (5cm) REFLECTIVE SLEEVE FOR DAY/NIGHT USE OR DELINEATORS IF DAY USE ONLY
- = TRAFFIC CONE WITH CLIP ON SIGN
- = TYPE I W/ SIGN
- = EXISTING SIGN
- = SIGNALIZED INTERSECTION
- = FLASHING ARROWBOARD
- = HIGH LEVEL WARNING DEVICE (FLAGTREE)
- = FLAGGER
- TANSAT = TOW AWAY NO STOPPING ANY TIME
- = EXISTING DRIVEWAY
- = WORK ZONE (ACTIVITY AREA) LIMITS
- = DIRECTION OF TRAFFIC



SCALE: 1:40

TRAFFIC CONTROL PLAN	
PROJECT ID: P.263585 WC CLLI: MPGVMNXA CITY: MAPLE GROVE LUMEN ENGINEER: JACOB KAUTZ DRAWN BY: PEARCE SERVICES/ AKASH PHONE: (202) - 538 - 2014	
TOWNSHIP: S26-T51N-R13W ISSUE: 00 DATE: 10/28/24 SHEET: 07 OF 07	