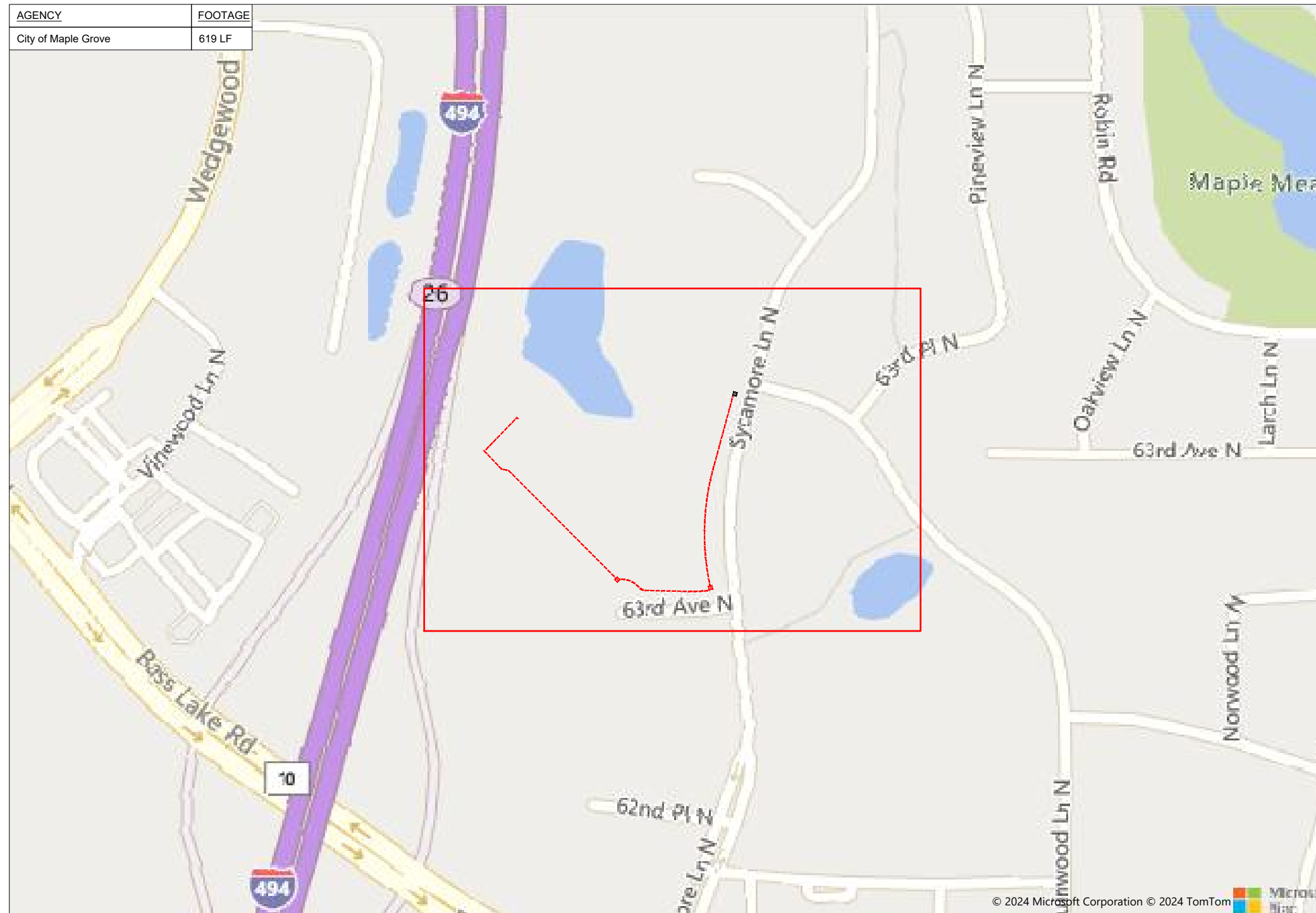


123819 Extended Stay America



12970 63RD AVE N MAPLE GROVE, MN 55369



1" = -

Route	123819 Extended Stay
City	Maple Grove
County	Hennepin
Filename	123819 Extended Stay
Work Order #	123819

arvig
 160 2nd St SW
 Perham, MN 56573
 (218) 346-5500

TRACKING

Staked By:	-
Drafted By:	WT 10/6/24
Project Manager	Ben Armbrust 218-347-3636
As-Built By:	-
Revision	-

Construction Totals	
Route Footage	1474'
Total Underground	1474'
Total Aerial	0'
Underground (New)	1474'
Aerial (New)	0'
Overpull (Ex Duct)	0'
Overlash (Ex Strand)	0'
Plow	0'
Bore	1474'
New Vaults	2
New Peds	0

GSOC
 GOPHER STATE ONE CALL
 1-800-252-1116
 www.gopherstateonecall.org

Prepared by:
 **compass**
 consultants inc.
 Perham, MN 218-346-3600
 TrustCompass.com

OVERVIEW

Legend

Fiber Linetypes

	Proposed Underground Fiber - Bore
	Proposed Underground Fiber - Plow
	Proposed UG Fiber in Existing Duct
	Existing Underground Fiber
	Proposed Aerial Fiber
	Proposed Aerial Overlash
	Existing Aerial Fiber
	Proposed Aerial Strand
	Existing Aerial Strand

Other Linetypes

	Whiteline
	Rail Road
	Fence
	Retaining Wall
	Storm Sewer
	Sanitary Sewer
	Gas Line
	Tele./Comm. Line
	Water Line
	Electric Line
	Street light/Traffic signal
	District Cooling
	District Heating
	Force Main
	Other Utility or Unknown
	Utility Easement

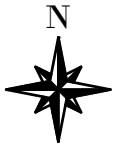
Abbreviations

- ABD - Abandoned Utility
- CL - Center Line
- WL - White Line
- R/W - Right of Way
- BOC - Back of Curb
- FC - Front of Curb
- EOR - Edge of Road
- S/W - Sidewalk
- HH - Handhole
- MH - Manhole
- PRT - Preterminated Cable
- PRG - Pigtail Cable

Symbols

	Proposed Handhole
	Existing Handhole
	Reference Handhole
	Manhole
	Proposed Cabinet
	Existing Cabinet
	Bore Pit
	Proposed Splice Point
	Existing Splice Point
	Power Pole
	Proposed Slack Coil
	Existing Slack Coil
	Proposed Anchor/Down Guy
	Existing Anchor/Down Guy
	Proposed Riser
	Existing Riser
	Aerial Bond
	Aerial Ground
	BM53T - Fiber Marker
	BM53 - Fiber Marker
	Proposed PED
	Existing PED
	Proposed Splice Case
	Existing Splice Case
	Street Light
	Traffic Light
	Transformer
	Hydrant
	Catch Basin
	Tree
	1A AMW - Main Enclosure - J-Box Needed
	2A AMW - Main Enclosure - No J-Box Needed
	3A AMW - Stack Enclosure

Materials	
48 Fiber	1799
1 X 1.25" Duct	650
2 X 1.25" Duct	824
Vault (24x30)	2
Ground Rod - 8'	2



1" = -

Route
123819 Extended Stay

City
Maple Grove

County
Hennepin

Filename
123819 Extended Stay

Work Order #
123819



160 2nd St SW
Perham, MN 56573
(218) 346-5500

TRACKING

Staked By:	-
Drafted By:	WT 10/6/24
Project Manager	Ben Armbrust 218-347-3636
As-Built By:	-
Revision	-

Construction Totals	
Route Footage	1474'
Total Underground	1474'
Total Aerial	0'
Underground (New)	1474'
Aerial (New)	0'
Overpull (Ex Duct)	0'
Overlash (Ex Strand)	0'
Plow	0'
Bore	1474'
New Vaults	2
New Peds	0

GSOC

GOPHER STATE ONE CALL
1-800-252-1116
www.gopherstateonecall.org

Prepared by:



Perham, MN 218-346-3600
TrustCompass.com

LEGEND

Existing Access Points



97391-01



97391-01



1" = -

Route
123819 Extended Stay

City
Maple Grove

County
Hennepin

Filename
123819 Extended Stay

Work Order #
123819



160 2nd St SW
Perham, MN 56573
(218) 346-5500

TRACKING

Staked By:
-

Drafted By:
WT 10/6/24

Project Manager
Ben Armbrust 218-347-3636

As-Built By:
-

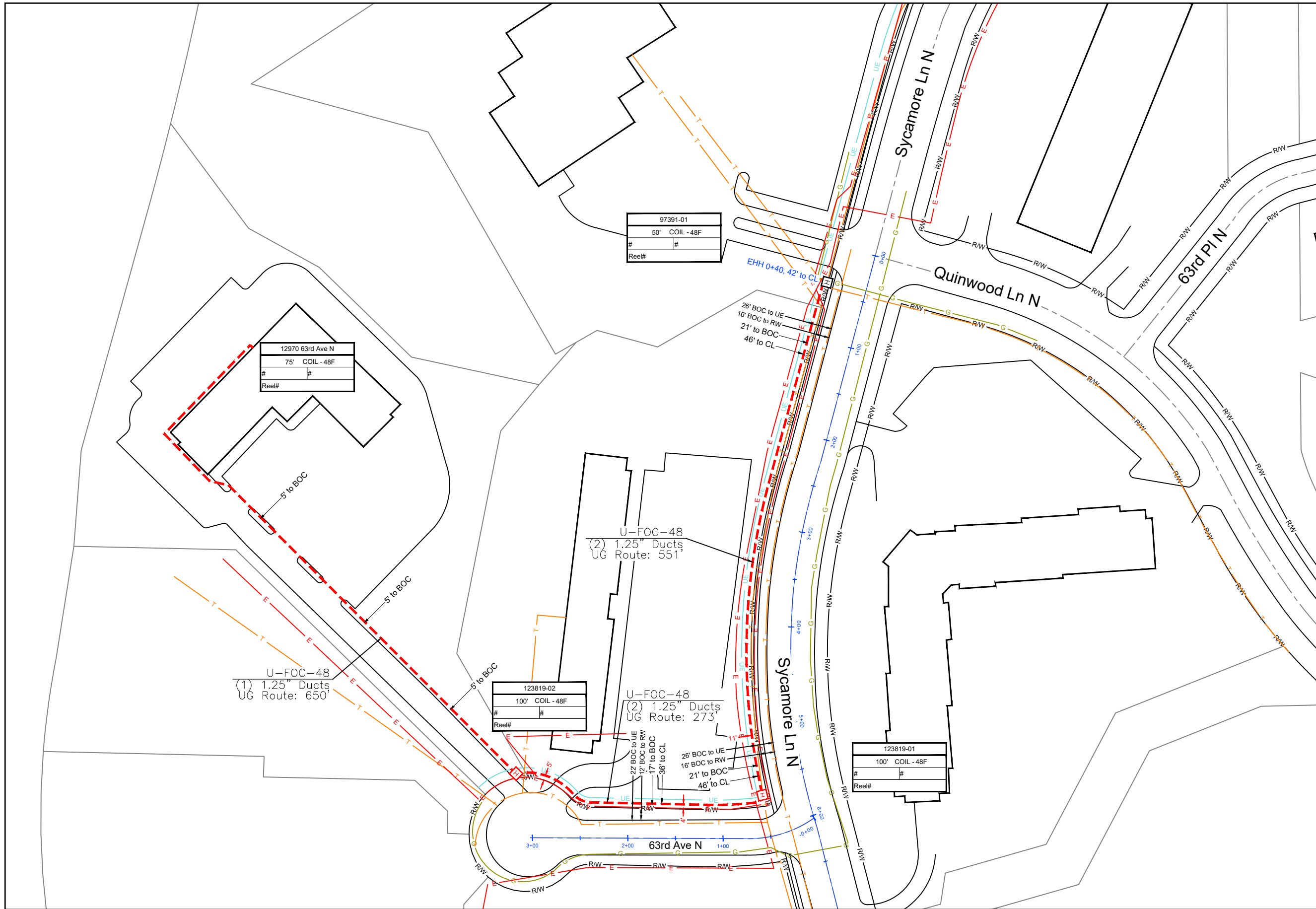
Revision
-

GSOC

GOPHER STATE ONE CALL
1-800-252-1116
www.gopherstateonecall.org



EXISTING AP



97391-01
50' COIL - 48F
#
Reel#

12970 63rd Ave N
75' COIL - 48F
#
Reel#

123819-02
100' COIL - 48F
#
Reel#

123819-01
100' COIL - 48F
#
Reel#



1" = 100'

Route	123819 Extended Stay
City	Maple Grove
County	Hennepin
Filename	123819 Extended Stay
Work Order #	123819



160 2nd St SW
Perham, MN 56573
(218) 346-5500

TRACKING

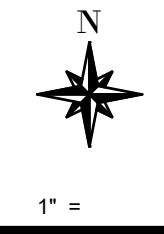
Staked By:	-
Drafted By:	WT 10/6/24
Project Manager	Ben Armbrust 218-347-3636
As-Built By:	-
Revision	-

GSOC
GOPHER STATE ONE CALL
1-800-252-1116
www.gopherstateonecall.org

Prepared by:
 compass consultants inc.
Perham, MN 218-346-3600
TrustCompass.com

123819-01

Date	From Vault	To Vault	Cable/Duct	Reel Number	Start #	End #	Total	Notes:
Vault Size	Vault #	Ground Rod	Vault Size	Vault #	Ground Rod	Vault Size	Vault #	Ground Rod
Vault			Vault			Vault		
Vault			Vault			Vault		
Vault			Vault			Vault		
Vault			Vault			Vault		
Locate Post								
Fiber Marker								
Tracer Wire								



Route
123819 Extended Stay

City
Maple Grove

County
Hennepin

Filename
123819 Extended Stay

Work Order #
123819



TRACKING

Staked By:
-

Drafted By:
WT 10/6/24

Project Manager
Ben Armbrust 218-347-3636

As-Built By:
-

Revision
- - -

GSOC
GOPHER STATE ONE CALL
1-800-252-1116
www.gopherstateonecall.org

Prepared by:
 compass
consultants inc.
Perham, MN 218-346-3600
TrustCompass.com

Tally Sheet

FOR CONSTRUCTION USE ONLY