



MCImetro  
ACCESS TRANSMISSION SERVICES LLC

OUTSIDE PLANT CONSTRUCTION  
FIBER OPTIC CABLE ROUTE

**PROJECT # 095295 - NFID 2409CQDG**

**NED - GOLDEN VALLEY NORTH FAILURE DOMAIN**

SITE CODE: HENNMN  
MAPLE GROVE / HEMLOCK LN - 73RD AVE TO 70TH PL / NETWORK EXTENSION  
MAPLE GROVE, MN

PROJECT STATUS: ISSUED FOR PERMITTING  
STATUS DATE: 9/30/24

# INDEX SHEET

1..... COVER SHEET  
 2..... INDEX SHEET  
 3..... LOCATION MAP  
 4..... CONTACT SHEET  
 5..... GENERAL NOTES/CLARIFICATION SHEET  
 6..... SYMBOLS KEY  
 7..... PROJECT CLARIFICATION SUMMARY/BOM  
 8-10..... CONSTRUCTION DRAWINGS  
 A1..... SINGLE LINE DIAGRAM  
 T1-T6..... MCI TYPICALS  
 ADDITIONAL 3RD PARTY DOCUMENTATION



PROJECT: 095295

HEMLOCK LN - 73RD AVE TO 70TH PL  
 MAPLE GROVE, MN

CLARIFICATION NO.	QUANTITY

MCImetro  
 ACCESS TRANSMISSION SERVICES, LLC  
 OUTSIDE PLANT CONSTRUCTION  
 TITLE: FIBER OPTIC CABLE ROUTE  
 NED - GOLDEN VALLEY NORTH FAILURE DOMAIN

DATE: 9/30/24

DESIGNER: EFH

DRAWN BY: MI-TECH

REVISIONS		
DATE	DESCRIPTION	INITIAL
10/10/24	CONST PACK	SJH

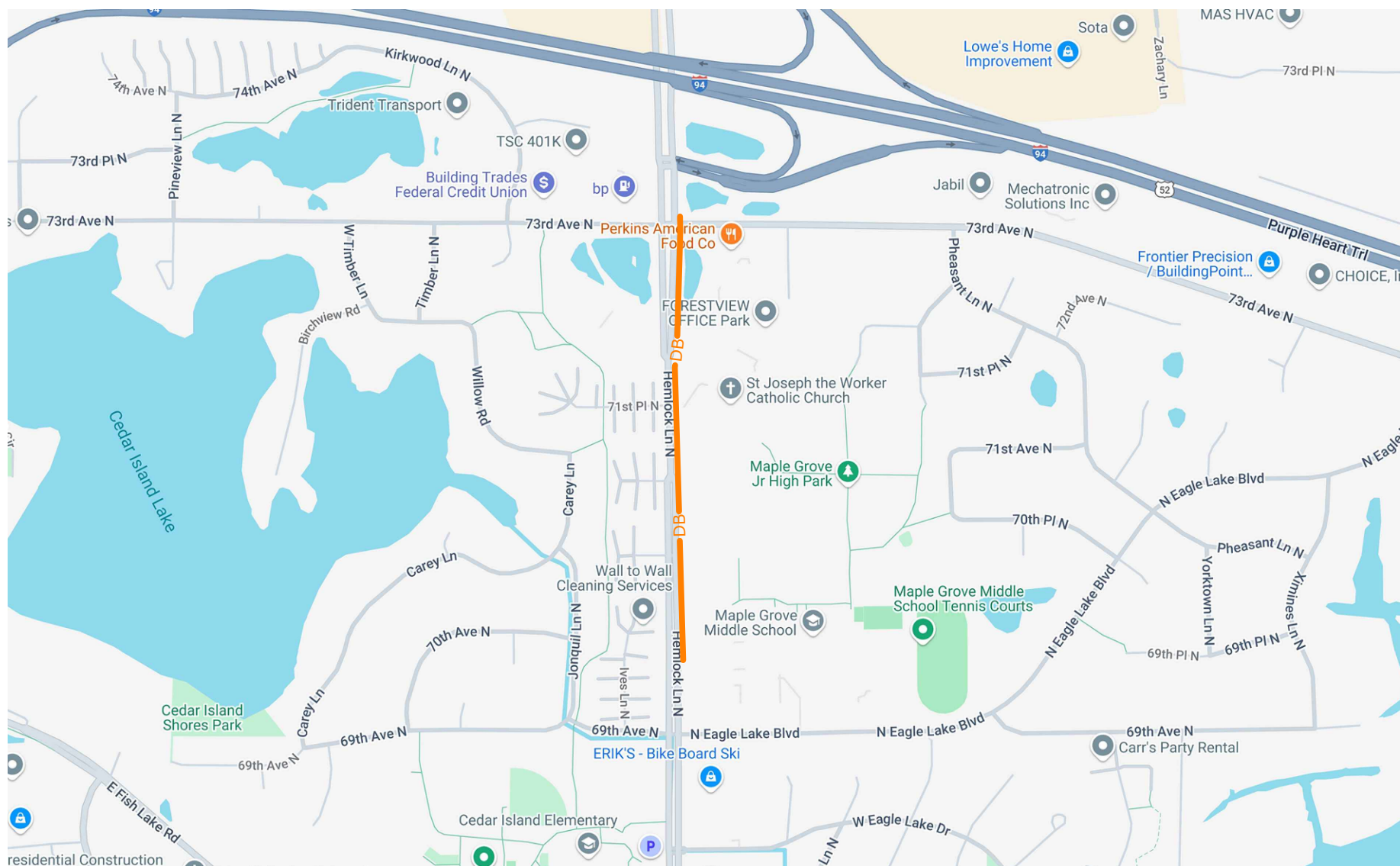
EXCEPT AS MAY BE OTHERWISE PROVIDED BY CONTRACT, THESE DRAWINGS AND SPECIFICATIONS SHALL REMAIN THE PROPERTY OF MCI COMMUNICATIONS SERVICES, INC., BOTH BEING ISSUED IN STRICT CONFIDENCE AND SHALL NOT BE REPRODUCED, COPIED, OR USED FOR ANY PURPOSE WITHOUT SPECIFIC WRITTEN PERMISSION.

SCALE  
 HORIZONTAL: NTS  
 VERTICAL: NTS  
 MP \_\_\_\_\_ TO MP \_\_\_\_\_  
 SHEET  2  OF  10   
 FILE: MAPLEGROVE\_HEMLOCK-73RD.DWG

# LOCATION MAP

PROPOSED BURIED CABLE

DB DB



PROJECT: 095295

HEMLOCK LN - 73RD AVE TO 70TH PL

MAPLE GROVE, MN

CLARIFICATION NO.	QUANTITY

MCI ACCESS TRANSMISSION SERVICES, LLC	MCI OUTSIDE PLANT CONSTRUCTION	TITLE: FIBER OPTIC CABLE ROUTE NED - GOLDEN VALLEY NORTH FAILURE DOMAIN
--	-----------------------------------	--

DATE: 9/30/24

DESIGNER: EFH

DRAWN BY: MI-TECH

**REVISIONS**

DATE	DESCRIPTION	INITIAL
10/10/24	CONST PACK	SIJH

EXCEPT AS MAY BE OTHERWISE PROVIDED BY CONTRACT, THESE DRAWINGS AND SPECIFICATIONS SHALL REMAIN THE PROPERTY OF MCI COMMUNICATIONS SERVICES, INC., BOTH BEING ISSUED IN STRICT CONFIDENCE AND SHALL NOT BE REPRODUCED, COPIED, OR USED FOR ANY PURPOSE WITHOUT SPECIFIC WRITTEN PERMISSION.

**SCALE**

HORIZONTAL: NTS

VERTICAL: NTS

MP \_\_\_\_\_ TO MP \_\_\_\_\_

SHEET 3 OF 10

FILE: MAPLEGROVE\_HEMLOCK-73RD.DWG

# CONTACT SHEET

## VERIZON BUSINESS

### OUTSIDE PLANT ENGINEERING:

PROJECT ENGINEER:  
 GREG ALLEN 612-619-9602  
 1200 WASHINGTON AVE  
 MINNEAPOLIS, MN 55401

SENIOR PROJECT ENGINEER:  
 DAN SCHMIDT 612-221-7997  
 1200 WASHINGTON AVE  
 MINNEAPOLIS, MN 55401

### OUTSIDE PLANT CONSTRUCTION:

PROJECT SUPERVISOR:  
 TBD  
 FIELD CONST. SUPERINTENDENT:  
 MANAGER:

### RIGHT-OF-WAY:

AGENT:  
 MANAGER:

### CONTRACTS:

### OTHERS:

PROGRAM MANAGER:  
 LIGHTWAVE ENGINEER:  
 CIVIL ENGINEER:  
 TERMINAL CONST. REP.:  
 SPLICING MANAGER:  
 TSO MANAGER:

### ENGINEERING CONTRACTOR

NAME OF FIRM:  
 MI-TECH SERVICES, INC. (612)518-3008

PROJECT MANAGER:  
 TIM ERICKSON (612)518-3008

ENG. / DESIGNER:  
 STEVEN J HOTVEDT (612)437-0172

### CONSTRUCTION CONTRACTOR

NAME OF FIRM: TBD  
 PROJECT COORDINATOR:  
 TBD

PROJECT SUPERVISOR:  
 TBD

## RAILROADS

**BRRI RAILROAD** COUNTY REGIONAL RAILROAD AUTHORITY  
 1600 DUNLAP ST. ST. PAUL MN 55109  
 PH: 612-591-1212  
 PER: 612-591-1212  
 blark@brri.com  
 4200 BUCKINGHAM RD STE 110 FORTH WORTH TX 76155

## UTILITIES

AT&T TRANSMISSION	(612) 344-3327
CENTURYLINK	(855) 742-6062
CENTER POINT ENERGY	(800) 778-9140
COMCAST	(800) 762-0592
CITY OF MINNEAPOLIS WATER	(612) 673-5600
CITY OF MINNEAPOLIS TRAFFIC	(612) 673-5600
CITY OF MINNEAPOLIS SEWER	(612) 673-5600
DISTRICT ENERGY	(651) 297-8955
EXTENET SYSTEMS INC	(800) 778-9140
HENNEPIN COUNTY PUBLIC WORKS	(406) 541-9571
LEVEL 3 COMMUNICATIONS	(877) 366-8344
METRO TRANSIT	(612) 349-7547
METRO WASTE COMMISSION	(651) 602-4511
MNDOT	(651) 366-5750
QWEST COMMUNICATIONS	(800) 283-4237
ROGERS COMMUNICATIONS	(877) 459-2690
SPRINT/LONG DISTANCE	(800) 521-0579
ST PAUL REGIONAL WATER	(651) 266-6868
ST PAUL SEWER	(651) 266-9850
ST PAUL TRAFFIC AND LIGHTING	(651) 266-9777
ST PAUL PARKS	(651) 632-5129
WINDSTREAM COMMUNICATIONS	(800) 289-1901
XCEL ENERGY	(800) 848-7558
ZAYO BANDWIDTH	(888) 267-1063
ZAYO ENTERPRISE NETWORKS LLC	(218) 346-5500

## CITY GOVERNMENT

**BRRI RAILROAD** CITY GOVERNMENT  
 4600 VICTORIA ST N, SHOREVIEW, MN 55126

## COUNTY GOVERNMENT

**HENNEPIN COUNTY**  
 395 JOHN IRELAND BLVD  
 SAINT PAUL, MN 55155

## STATE GOVERNMENT

MINNESOTA DEPARTMENT OF TRANSPORTATION  
 ANN DRIVER  
 UTILITY PERMITS  
 MAILSTOP 678  
 395 JOHN IRELAND BLVD  
 SAINT PAUL, MN 55155

MINNESOTA DEPARTMENT OF NATURAL RESOURCES  
 JEAN ZOCH, REAL ESTATE TECHNICIAN  
 PERMITTING  
 1200 WARNER ROAD  
 SAINT PAUL, MN 55106  
 651-259-5843  
 JEAN.ZOCH@STATE.MN.US

## FEDERAL GOVERNMENT



PROJECT: 095295

HEMLOCK LN - 73RD AVE TO 70TH PL  
 MAPLE GROVE, MN

CLARIFICATION NO.	QUANTITY

MCI metro  
 ACCESS TRANSMISSION SERVICES, LLC  
 OUTSIDE PLANT CONSTRUCTION  
 TITLE: FIBER OPTIC CABLE ROUTE  
 NED - GOLDEN VALLEY NORTH FAILURE DOMAIN

DATE: 9/30/24

DESIGNER: EFH

DRAWN BY: MI-TECH

REVISIONS		
DATE	DESCRIPTION	INITIAL
10/10/24	CONST PACK	SIH

EXCEPT AS MAY BE OTHERWISE PROVIDED BY CONTRACT, THESE DRAWINGS AND SPECIFICATIONS SHALL REMAIN THE PROPERTY OF MCI COMMUNICATIONS SERVICES, INC. BOTH BEING ISSUED IN STRICT CONFIDENCE AND SHALL NOT BE REPRODUCED, COPIED, OR USED FOR ANY PURPOSE WITHOUT SPECIFIC WRITTEN PERMISSION.

**SCALE**

HORIZONTAL: NTS  
 VERTICAL: NTS

MP \_\_\_\_\_ TO MP \_\_\_\_\_  
 SHEET 4 OF 10

FILE: MAPLEGROVE\_HEMLOCK-73RD.DWG



PROJECT: 095295

HEMLOCK LN - 73RD AVE TO 70TH PL

MAPLE GROVE, MN

CLARIFICATION NO. QUANTITY

Table with 2 columns: CLARIFICATION NO., QUANTITY. Multiple empty rows.

MCI metro ACCESS TRANSMISSION SERVICES, LLC



OUTSIDE PLANT CONSTRUCTION

TITLE: FIBER OPTIC CABLE ROUTE

NED - GOLDEN VALLEY NORTH FAILURE DOMAIN

DATE: 9/30/24

DESIGNER: EFH

DRAWN BY: MI-TECH

REVISIONS

Table with 3 columns: DATE, DESCRIPTION, INITIAL. Row 1: 10/10/24, CONST PACK, SJH.

EXCEPT AS MAY BE OTHERWISE PROVIDED BY CONTRACT, THESE DRAWINGS AND SPECIFICATIONS SHALL REMAIN THE PROPERTY OF MCI COMMUNICATIONS SERVICES, INC. BOTH BEING ISSUED IN STRICT CONFIDENCE AND SHALL NOT BE REPRODUCED, COPIED, OR USED FOR ANY PURPOSE WITHOUT SPECIFIC WRITTEN PERMISSION.

SCALE

HORIZONTAL: NTS

VERTICAL: NTS

MP TO MP

SHEET 5 OF 10

FILE: MAPLEGROVE\_HEMLOCK-73RD.DWG

GENERAL NOTES

- 1. VERIZON BUSINESS COMPRISES THE FOLLOWING OPERATING ENTITIES: - MCI COMMUNICATIONS SERVICES, INC. - MCI METRO ACCESS TRANSMISSION SERVICES, LLC - MCI METRO ACCESS TRANSMISSION SERVICES OF VIRGINIA, INC. - MCI METRO ACCESS TRANSMISSION SERVICES OF MASSACHUSETTS, INC. - METROPOLITIAN FIBER SYSTEMS OF NEW YORK, INC.
2. ALL WORK TO BE PERFORMED IN STRICT ACCORDANCE WITH THE APPLICABLE CODES OR REQUIREMENTS OF ANY REGULATING GOVERNMENTAL AGENCY, VERIZON BUSINESS AND THE RIGHT-OF-WAY GRANTOR.
3. LOCATIONS OF SOME OF THE PHYSICAL FEATURES WERE OBTAINED FROM DATED RAILROAD EVALUATION MAPS OR OTHER DRAWINGS AND MAY NOT BE AS SHOWN OR DEPICTED ON THESE DRAWINGS.
4. UNDERGROUND UTILITIES HAVE BEEN PLOTTED FROM AVAILABLE RECORDS AND FIELD OBSERVATIONS BUT ARE NOT NECESSARILY EXACT. THEREFORE, UTILITY LOCATIONS WILL BE VERIFIED AT LEAST 100 FEET IN ADVANCE OF TRENCHING OR PLOWING, SO THAT CHANGES IN CABLE PLACEMENT CAN BE MADE IN THE EVENT OF CONFLICT.
5. ANY AND ALL IMPROVEMENTS, SUCH AS ASPHALT OR CONCRETE PAVEMENT, CURBS, GUTTERS, WALKS, DRAINAGE DITCHES, EMBANKMENTS, SHRUBS, TREES, GRASS SOD, ETC., IF DAMAGED, SHALL BE RESTORED TO ORIGINAL CONDITION.
6. EQUIPMENT TYPES SPECIFIED HEREIN (IE: "BACKHOE", SWAMP PLOW" ETC.) ARE SUGGESTIONS ONLY AND ARE NOT INTENDED AS REQUIREMENTS.
7. SHORING OF EXCAVATIONS AND TRENCHES IN ACCORDANCE WITH OSHA REGULATIONS IS MANDATORY.
8. BURIED CABLE MARKERS WILL BE PLACED AT ALL UNDERGROUND UTILITY LOCATIONS AND ALL OTHER LOCATIONS IN ACCORDANCE WITH THE CONSTRUCTION DRAWINGS AND THE OUTSIDE PLANT HANDBOOK.
9. ALL 2" ID CONDUIT WILL BE HDPE, OR AS SPECIFIED.
10. UNDERGROUND CONDUIT WILL BE PLACED AT 36" MINIMUM COVER UNLESS OTHERWISE SPECIFIED ON THE CONSTRUCTION DRAWINGS.

CLARIFICATION NOTES

- 1. STATION
2. LOCATION
3. CLARIFICATION NO. AND MINIMUM COVER
4. QUANTITY LINEAR FOOTAGE/SQUARE FOOTAGE, SIZE OF MANHOLE/HANDHOLE SIZE OF PULL/SPLICE BOX, DIMENSION OF WALL, HEIGHT/CLASS/TYPE OF POLE
5. TYPICAL DRAWING NO. AND TYPICAL DETAIL DRAWING NUMBER
6. PLANT ACCOUNTING CODE
7. SPECIFIED CONDUIT, HANDHOLE/MANHOLE NO., SPECIFIED PURPOSE AND MATERIAL, BRIDGE NO. AND RAILROAD STATION, MATERIAL, POLE NO.

ADDENDUM NOTES

CLARIFICATION NOTES (CONTINUED)

- 100 110 JACK AND DRY BORE CONDUIT(S)
200 210 PLACE CONDUIT
212 PLACE HIGH DENSITY POLYETHYLENE (HDPE)
213 ROCK ADDER
214 SLURRY BACKFILL ADDER
215 EXPOSE CONDUIT
216 EXPOSE COMDUIT AND RELOCATE
217 EXPOSE CONDUIT AND REPLACE/SUBSTITUTE
218 EXPOSE AND REMOVE CONDUIT
219 EXPOSE AND REMOVE CONDUIT (ABANDONED)
220 CONCRETE ENCASE
221 REMOVE CONCRETE ENCASUREMENT
222 REMOVE CONCRETE CAP
240 PLACE HANDHOLE
244 REMOVE EXISTING HANDHOLE
245 RELOCATE HANHOLE
247 REPLACE/SUBSTITUTE HANDHOLE
248 EXCAVATE SPLICE PIT
250 PLACE MANHOLE
252 REMOVE EXISTING MANHOLE
255 RELOCATE PRECAST MANHOLE
256 REPLACE/SUBSTITUTE PRECAST MANHOLE
260 CONSTRUCT WALL
270 REMOVE AND RESTORE ASPHALT
280 REMOVE AND RESTORE CONCRETE
281 REMOVE AND RESTORE SIDEWALK
282 REMOVE AND RESTORE CURBING
300 310 ATTACH CONDUIT TO WALL OR STRUCTURE
315 DETACH CONDUIT FROM WALL OR STRUCTURE
320 CORE BORE
330 ATTACH PULL/SPLICE BOX TO WALL OR STRUCTURE
400 410 PULL CABLE
411 PULL THROUGH DUCT (INNERDUCT)
415 REMOVE CABLE FROM CONDUIT
420 REPOSITION ACTIVE CABLE SLACK
500 510 DIRECT BURY CABLE
515 EXPOSE DIRECT BURIED CABLE
516 EXPOSE DIRECT BURIED CABLE AND RELOCATE
517 REMOVE AND DISPOSE OF CABLE
520 PLACE AERIAL CABLE
525 RELOCATE AERIAL CABLE
526 DELASH AERIAL CABLE
527 RELASH AERIAL CABLE
528 REMOVE AERIAL CABLE
530 PLACE POLE/PUSH BRACE
535 REMOVE POLE/PUSH BRACE
600 610 JETTING CONDUIT
620 EMBEDMENT PLOW
630 DIRECTIONAL BORE
700 710 PLACE BURIED CABLE MARKERS AND SIGNS/MWCOW WATER CROSSING SIGNS
711 PLACE ISOLATOR/PROTECTION SYSTEM AT EXISTING HANDHOLES/MANHOLE
712 REMOVE BURIED CABLE MARKER POST/HARDWARE
714 REMOVE CONCRETE BURIED CABLE MARKER POST

GENERAL NOTES

- 1. CONTRACTOR MUST OBTAIN LOCATES PRIOR TO DISTURBING THE GROUND.
2. CONTRACTOR MUST HAVE A COPY OF THE APPROVED PERMIT FROM THE APPROPRIATE AGENCY ON THE JOBSITE AT ALL TIMES.
3. ALL CABLE WILL BE PLACED AT STANDARD MINIMUM DEPTH. (MCI STANDARD IS 48" DEEP UNLESS OTHERWISE DIRECTED BY A MCI REPRESENTATIVE.)
4. ANY LANDSCAPING WILL BE REPLACED TO EQUAL OR BETTER THAN THAT WHICH EXISTED PRIOR TO WORK.
5. PROJECT SITE WILL BE PROPERLY SECURED PRIOR TO THE END OF EACH DAY.
6. ALL WORK IS TO BE IN ACCORDANCE WITH ALL AUTHORITIES HAVING JURISDICTION IN THE WORK ZONE.
7. CONTRACTORS ARE ADVISED TO CONTACT MCI FOR ANY ADDITIONAL INFORMATION OR CLARIFICATION CONCERNING SCOPE OF WORK OR THE REQUIREMENTS NECESSARY FOR PROJECT COMPLETION.
8. CONTRACTOR IS RESPONSIBLE TO FIELD VERIFY ALL DIMENSIONS, QUANTITIES AND EXISTING CONDITIONS PRIOR TO CONSTRUCTION. IF A SIGNIFICANT CHANGE TO THE RUNNING LINE IS NEEDED, PLEASE CONTACT YOUR MCI REPRESENTATIVE BEFORE PROCEEDING.
9. BEFORE CONSTRUCTION BEGINS, CONTRACTOR SHALL TAKE APPROPRIATE PRECAUTIONS TO AVOID ANY POTENTIAL OBSTRUCTIONS PRIOR TO PROCEEDING WITH WORK.
10. NO CONSTRUCTION ON PRIVATE PROPERTY WILL COMMENCE UNTIL APPROVAL IS GIVEN BY THE APPROPRIATE MCI EMPLOYEE.
11. CONTRACTOR SHALL NOT PROCEED WITH WORK UNTIL THEY HAVE RECEIVED A PURCHASE ORDER AND HAVE BEEN DIRECTED TO DO SO BY AN AUTHORIZED MCI REPRESENTATIVE.
12. CONTRACTOR SHALL NOT EXCEED THE PURCHASE ORDER VALUE WITHOUT AUTHORIZATION IN WRITING FROM THE APPROPRIATE MCI REPRESENTATIVE.
13. AS-BUILTS WILL BE REQUIRED FOR EACH PROJECT INCLUDING CABLE FOOTAGE SEQUENTIALS AT EVERY ACCESS POINT, SLACK LOOP, SPLICE LOCATION, POLE AND TERMINATION POINT. CONTRACTOR SHALL PROVIDE NOTES OF ALL CHANGES IN DEPTHS, RUNNING LINES, MH/HH LOCATIONS, AND ANY OTHER APPLICABLE NOTES TO DEPICT THE WORK THAT TOOK PLACE. NOTE: ALL MAJOR CHANGES NEED TO BE PRE-APPROVED BY AN AUTHORIZED MCI EMPLOYEE PRIOR TO STARTING THE WORK.
14. THE SUBSURFACE UTILITY INFORMATION IN THIS PLAN IS UTILITY QUALITY LEVEL D. THIS UTILITY QUALITY LEVEL WAS DETERMINED ACCORDING TO THE GUIDELINES OF CI/ASCE 38-02, ENTITLED STANDARD GUIDELINES FOR THE COLLECTION AND DEPICTION OF EXISTING SUBSURFACE UTILITY DATA. IT SHALL BE THE CONTRACTORS RESPONSIBILITY TO UTILIZE THE GOPHER STATE ONE CALL EXCAVATION NOTICE SYSTEM REQUIRED MN STATUTE, CHAPTER 216D FOR ALL UNDERGROUND UTILITY LOCATIONS.



PROJECT: 095295

HEMLOCK LN - 73RD AVE TO 70TH PL

MAPLE GROVE, MN

CLARIFICATION NO.	QUANTITY

# SYMBOLS KEY

	EXISTING	PROPOSED
BURIED CABLE	—————	—————
AERIAL CABLE	————— A	————— A
SUBMARINE CABLE	————— SUBM	————— SUBM
FOGWIRE CABLE	————— FOGW	————— FOGW
DIRECT BURIED HDPE	————— H	————— H
PVC OR SPLIT PVC CONDUIT	===== =====	===== =====
BSP/GSP OR SPLIT BSP/GSP CONDUIT	===== =====	===== =====
STEEL CASING	===== =====	===== =====
REMOVE AND RESTORE ASPHALT OR CONCRETE (WIDTH AS INDICATED)	===== 48" =====	===== 48" =====
CORE BORE	—————	—————
JACK AND BORE	—————	—————
DIRECTIONAL BORE	————— DBI	————— DBI
FUTURE CABLE	—————	—————
REMOVE CABLE	————— R	————— R
TO BE REMOVED OR ABANDONED (SHOWN FOR HDPE)	————— X H	————— H X
AERIAL UTILITY (ELECTRIC)	————— E	————— E
UNDERGROUND UTILITY (TELEPHONE)	————— T	————— T
MAIN TRACKS	—————	—————
AUXILIARY TRACKS	—————	—————
CENTERLINE	————— C/L	————— C/L
RIGHT-OF-WAY	————— R/W	————— R/W
EDGE OF PAVEMENT	—————	—————
SIDEWALK	—————	—————
DITCH LINE	————— D/L	————— D/L
TAX DISTRICT	—————	—————
CITY, COUNTY OR STATE BOUNDARY LINE	—————	—————
PROPERTY LINE	—————	—————
FENCE LINE	————— X	————— X
GUARDRAIL	————— I	————— I
TOP OF SLOPE	————— V	————— V
TOE OF SLOPE	————— ^	————— ^
FACE OF CURB	————— F of C	————— F of C
PROPOSED FIBER IN EXISTING DUCT	—————	—————
PROPOSED FIBER AND DUCT	—————	—————

DISTRICT ENERGY	————— DE
GAS	————— G
WATER	————— W
TELEPHONE	————— T
ELECTRIC	————— E
SANITARY SEWER (SEW)	————— SEW
STORM DRAIN	————— SD
FENCE	————— X
CABLE TV	————— TV
STEAM	————— STM
OIL	————— OIL
UNKNOWN UTILITY	————— UNK
RIGHT OF WAY	————— R/W
FACE OF CURB	————— F of C
STREET LT/TRAFFIC SIGNAL	————— SL/TS
EDGE OF PAVEMENT	————— EOP
REMOVE FIBER/ABANDON DUCT	————— R
PROPOSED CURB/PATH BY OTHERS	—————
PROPOSED SANITARY BY OTHERS	—————
PROPOSED STORM BY OTHERS	—————
PROPOSED WATER BY OTHERS	—————
PROPOSED LIGHTING BY OTHERS	—————
HANDHOLE - EXISTING	HH- 30"x60"x30" 0+00
HANDHOLE - PROPOSED	HH- STA 0+00 30"x60"x30"
MANHOLE - EXISTING	MH-
MANHOLE - PROPOSED	MH- STA 0+00
SPLICE POINT - EXISTING	∞
SPLICE POINT - PROPOSED	∞
SITE CALLOUT - PROPOSED	MACRO CELL NAME STREET
AERIAL STORAGE - EXISTING	∞
AERIAL STORAGE - PROPOSED	∞

STEEL MARKER AND SIGN-(A)  
ALUMINUM "HUB"-STYLE MARKER-(B)  
FLAT MARKER-(C)  
TUBULAR MARKER-(D)  
TUBULAR MARKER, & ISOLATOR PROTECTOR-(E)

MILE POST MARKER  
NOTE:  
DASHED = NOT FOUND IN FIELD

PERMIT TRACKING FORM IDENTIFIER

ROCK PROBE (DEPTH AS INDICATED)

UTILITY COVER DEPTH

HANDHOLE, MANHOLE OR PULLBOX

POLE

ANCHOR ONLY

GUY ONLY

OVERHEAD GUY (ARROW IN DIRECTION OF PULL)

ANCHOR AND GUY

SIDEWALK ANCHOR AND GUY

FOREIGN ANCHOR AND GUY

PUSH BRACE (EXISTING POLE)

ACCOUNT CODE CHANGE (BURIED TO AERIAL)

BOND AND GROUND

CULVERT (SIZE AS INDICATED)

BRIDGE

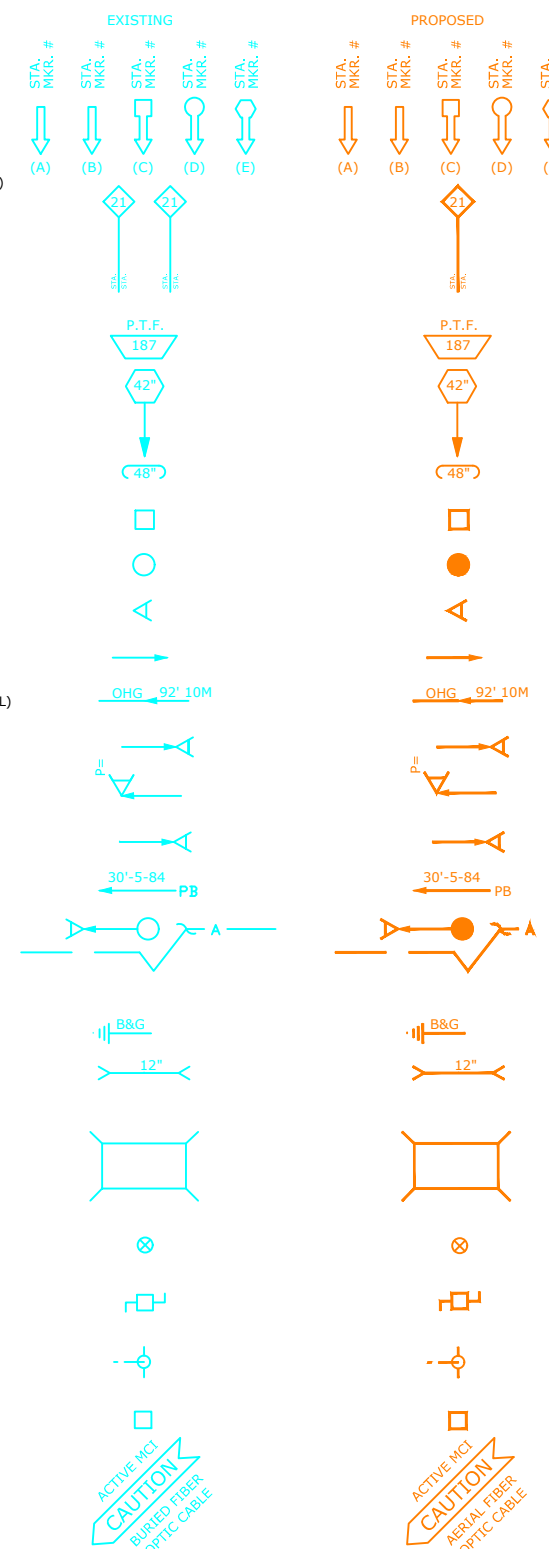
WATER METER

GAS VALVE

FIRE HYDRANT

RAILROAD SIGNAL CONTROL BOX

CAUTION NOTE



DATE: 9/30/24

DESIGNER: EFH

DRAWN BY: MI-TECH

REVISIONS

DATE	DESCRIPTION	INITIAL
10/10/24	CONST PACK	SJH

EXCEPT AS MAY BE OTHERWISE PROVIDED BY CONTRACT, THESE DRAWINGS AND SPECIFICATIONS SHALL REMAIN THE PROPERTY OF MCI COMMUNICATIONS SERVICES, INC., BOTH BEING ISSUED IN STRICT CONFIDENCE AND SHALL NOT BE REPRODUCED, COPIED, OR USED FOR ANY PURPOSE WITHOUT SPECIFIC WRITTEN PERMISSION.

SCALE

HORIZONTAL: NTS

VERTICAL: NTS

MP \_\_\_\_\_ TO MP \_\_\_\_\_

SHEET 6 OF 10

FILE: MAPLEGROVE\_HEMLOCK-73RD.DWG

MCImetro  
 ACCESS TRANSMISSION SERVICES, LLC  
 MCI  
 OUTSIDE PLANT CONSTRUCTION  
 TITLE: FIBER OPTIC CABLE ROUTE  
 NED - GOLDEN VALLEY NORTH FAILURE DOMAIN

# CLARIFICATION SUMMARY SHEET PROJECT SPECIFIC



**PROJECT:** 095295

HEMLOCK LN - 73RD AVE TO 70TH PL

MAPLE GROVE, MN

PROJECT CLARIFICATION SUMMARY		
V235 - Place Buried - Directional Bore -Standard - Up to 4.5" to 7.0" Outside Diameter Bundle	1775	FT
V256 - Place Buried - Handhole Large > 2' X 3'	2	EA
V273C - Place Buried - Locate Wire and/or Locate Wire in Duct - Secondary Function	1775	FT
V273E - Place Buried - Ground Rod System - Primary Function	2	EA
V273F - Place Buried - Ground Wire	100	FT
V273G - Place Buried - Ground Rod - Secondary Function	2	EA
V275A - Intercept Buried - Conduit	1	FT
V277 - Place Buried - Remove & Replace Asphalt in 2" Depth Increments	6	SQ.FT
V277A - Place Buried - Remove & Replace Concrete in 2" Depth Increments	9	SQ.FT
V301 - Place Underground - Cable, Wire, or Pipe in OPEN Conduit	1775	FT
V316 - Maintain Underground - Excavation for Location of Existing Facilities	12	EA
V399 - Move Charge - Underground	100	FT
V1039B - Splicing - Splice Fiber Optic Ribbon Cable > 96 Fibers	864	EA
V802A - Mobilization Fee: Less Than or Equal to 50 Miles Outside Market Boundary	3	EA

PERMITS EXISTING			
PERMIT AGENCY / PERMIT NUMBER	SHEET #	FOOTAGE	DATE APPROVED
CITY OF MAPLE GROVE / GV NORTH-1	10	1,769'	XX/XX/XX
HENNEPIN COUNTY / GV NORTH 2	8-10	1,665'	XX/XX/XX
MNDOT / GV NORTH 3	10	6'	XX/XX/XX

CLARIFICATION NO.	QUANTITY

MCImetro  
ACCESS TRANSMISSION SERVICES, LLC

OUTSIDE PLANT CONSTRUCTION

TITLE: FIBER OPTIC CABLE ROUTE

NED - GOLDEN VALLEY NORTH FAILURE DOMAIN

# BOM / MAKE READY COST ESTIMATE PROJECT SPECIFIC

CITY-LOCATION			PROJECT NAME								TOTAL AERIAL FOOTAGE	TOTAL POLES	TOTAL UNDERGROUND FOOTAGE	TOTAL MH'S/HH'S	TOTAL BUILDING FOOTAGE	TOTAL PULL BOXES								
MAPLE GROVE			TO		GOLDEN VALLEY NORTH FAILURE DOMAIN								0'	0	1,775'	4	0'	0						
1728F SM +3%	864F +3%	576F +3%	432F +3%	288F +3%	216F +3%	144F +3%	96F +3%	72F +3%	48F +3%	24F +3%	450D SPLICE CASE	600D SPLICE CASE	6 PORT MHT 500' TAIL	6 PORT MHT 1,000' TAIL	12 PORT MHT 500' TAIL	12 PORT MHT 1,000' TAIL	24F PATCH PANEL	24F PATCH PANEL E/W TAIL	48F PATCH PANEL	48F PATCH PANEL E/W TAIL	72F PATCH PANEL	72F PATCH PANEL E/W TAIL	6 AWG GROUND WIRE	
0'	0'	0'	2,055'	0'	0'	0'	0'	0'	0'	0'	0'	1'	0	0	0	0	0	0	0	0	0'	0'	0'	0'
Hand Holes 12"x18"x12"	Hand Holes 24"x36"x24"	Hand Holes 30"x60"x30"	4'X4'X4' MANHOLE	FLOWER POT	GROUND ROD	MARKER POST	LOCATE POST	GROUND WIRE	LOCATE WIRE	1.25"HDPE SDR-11 +3%	2"HDPE SDR-11 +3%	4" HDPE SDR-11 +3%	1.25" PVC SPLIT DUCT	2" PVC SPLIT DUCT	4" PVC SPLIT DUCT	1.25" PVC SPLIT 90° 48" RADIUS	2" PVC SPLIT 90° 48" RADIUS	4" PVC SPLIT 90° 48" RADIUS	2" EMT	2" EMT 90° 36" RADIUS	IN LINE GUTTER BOX			
0	0	2	0	0	2	0	3	150'	1,828'	0'	1,828'	0'	0'	0'	0'	0	0	0	0'	0				

DATE: 9/30/24

DESIGNER: EFH

DRAWN BY: MI-TECH

REVISIONS

DATE	DESCRIPTION	INITIAL
10/10/24	CONST PACK	SIH

EXCEPT AS MAY BE OTHERWISE PROVIDED BY CONTRACT, THESE DRAWINGS AND SPECIFICATIONS SHALL REMAIN THE PROPERTY OF MCI COMMUNICATIONS SERVICES, INC., BOTH BEING ISSUED IN STRICT CONFIDENCE AND SHALL NOT BE REPRODUCED, COPIED, OR USED FOR ANY PURPOSE WITHOUT SPECIFIC WRITTEN PERMISSION.

SCALE

HORIZONTAL: NTS

VERTICAL: NTS

MP \_\_\_\_\_ TO MP \_\_\_\_\_

SHEET 7 OF 10

FILE: MAPLEGROVE\_HEMLOCK-73RD.DWG

THE SUBSURFACE UTILITY INFORMATION IN THIS PLAN IS UTILITY QUALITY LEVEL D. THIS UTILITY QUALITY LEVEL WAS DETERMINED ACCORDING TO THE GUIDELINES OF C/ASCE 38-02, ENTITLED STANDARD GUIDELINES FOR THE COLLECTION AND DEPICTION OF EXISTING SUBSURFACE UTILITY DATA. IT SHALL BE THE CONTRACTORS RESPONSIBILITY TO UTILIZE THE GOPHER STATE ONE CALL EXCAVATION NOTICE SYSTEM REQUIRED MN STATUTE, CHAPTER 216D FOR ALL UNDERGROUND UTILITY LOCATIONS.



PROJECT: 095295

HEMLOCK LN - 73RD AVE TO 70TH PL

MAPLE GROVE, MN

CLARIFICATION NO. QUANTITY

CLARIFICATION NO.	QUANTITY

MCImetro  
ACCESS TRANSMISSION SERVICES, LLC  
**MCI**  
OUTSIDE PLANT CONSTRUCTION  
TITLE: FIBER OPTIC CABLE ROUTE  
NED - GOLDEN VALLEY NORTH FAILURE DOMAIN

DATE: 9/30/24

DESIGNER: EFH

DRAWN BY: MI-TECH

REVISIONS

DATE	DESCRIPTION	INITIAL
10/10/24	CONST PACK	SIH

EXCEPT AS MAY BE OTHERWISE PROVIDED BY CONTRACT, THESE DRAWINGS AND SPECIFICATIONS SHALL REMAIN THE PROPERTY OF MCI COMMUNICATIONS SERVICES, INC. BOTH BEING ISSUED IN STRICT CONFIDENCE AND SHALL NOT BE REPRODUCED, COPIED, OR USED FOR ANY PURPOSE WITHOUT SPECIFIC WRITTEN PERMISSION.

SCALE

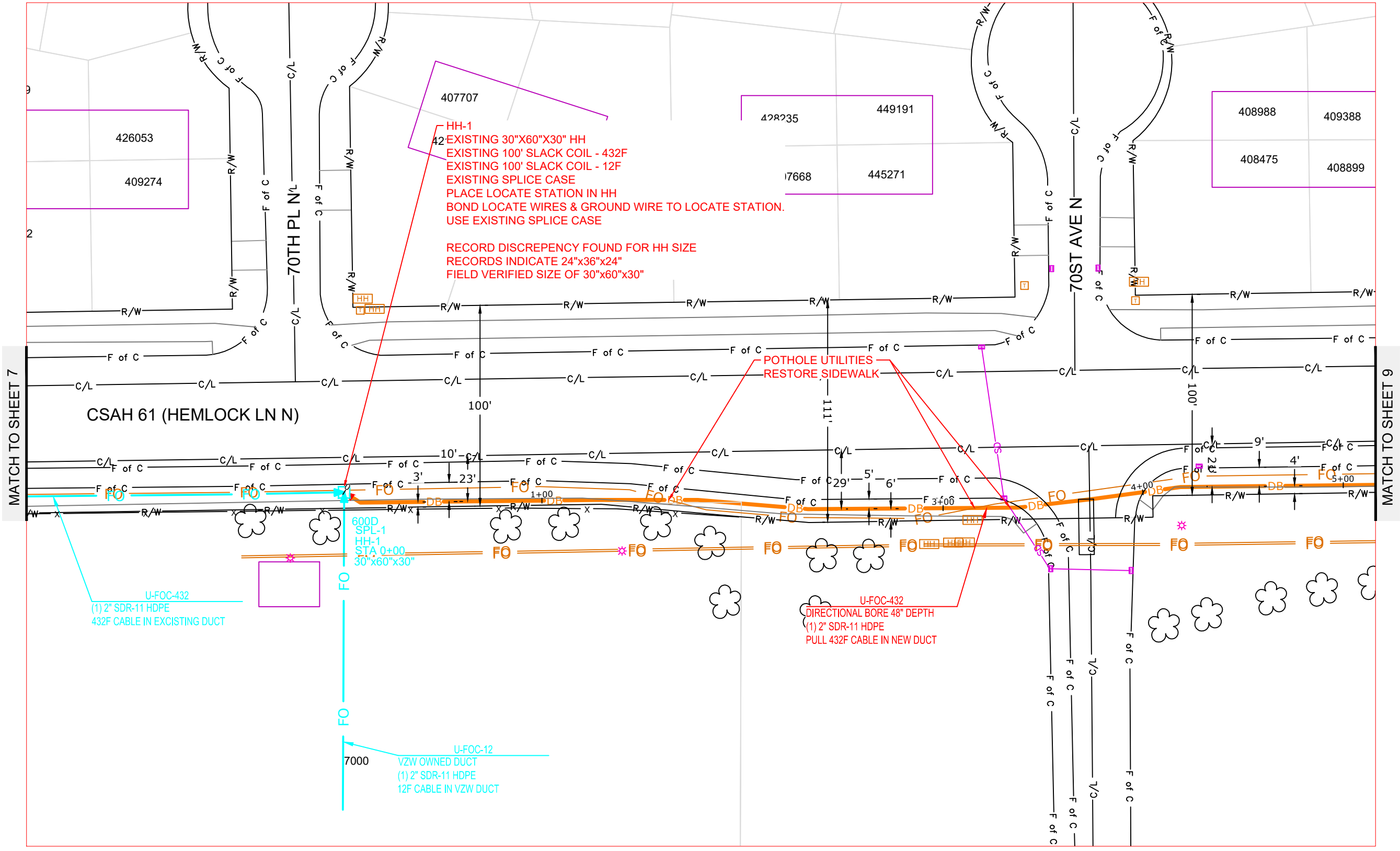
HORIZONTAL: 1"=50'

VERTICAL: 1"=50'

MP TO MP

SHEET 8 OF 10

FILE: MAPLEGROVE\_HEMLOCK-73RD



MATCH TO SHEET 7

MATCH TO SHEET 9

CSAH 61 (HEMLOCK LN N)

70TH PL N/L

70ST AVE N

600D SPL-1  
HH-1  
STA 0+00  
30"x60"x30"

U-FOC-432  
(1) 2" SDR-11 HDPE  
432F CABLE IN EXCISTING DUCT

U-FOC-12  
VZW OWNED DUCT  
(1) 2" SDR-11 HDPE  
12F CABLE IN VZW DUCT

HH-1  
42 EXISTING 30"x60"x30" HH  
EXISTING 100' SLACK COIL - 432F  
EXISTING 100' SLACK COIL - 12F  
EXISTING SPLICE CASE  
PLACE LOCATE STATION IN HH  
BOND LOCATE WIRES & GROUND WIRE TO LOCATE STATION.  
USE EXISTING SPLICE CASE

RECORD DISCREPENCY FOUND FOR HH SIZE  
RECORDS INDICATE 24"x36"x24"  
FIELD VERIFIED SIZE OF 30"x60"x30"

POTHOLE UTILITIES  
RESTORE SIDEWALK

U-FOC-432  
DIRECTIONAL BORE 48" DEPTH  
(1) 2" SDR-11 HDPE  
PULL 432F CABLE IN NEW DUCT

MATCH TO SHEET 7

MATCH TO SHEET 9



THE SUBSURFACE UTILITY INFORMATION IN THIS PLAN IS UTILITY QUALITY LEVEL D. THIS UTILITY QUALITY LEVEL WAS DETERMINED ACCORDING TO THE GUIDELINES OF CI/ASCE 38-02, ENTITLED STANDARD GUIDELINES FOR THE COLLECTION AND DEPICTION OF EXISTING SUBSURFACE UTILITY DATA. IT SHALL BE THE CONTRACTORS RESPONSIBILITY TO UTILIZE THE GOPHER STATE ONE CALL EXCAVATION NOTICE SYSTEM REQUIRED MN STATUTE, CHAPTER 216D FOR ALL UNDERGROUND UTILITY LOCATIONS.

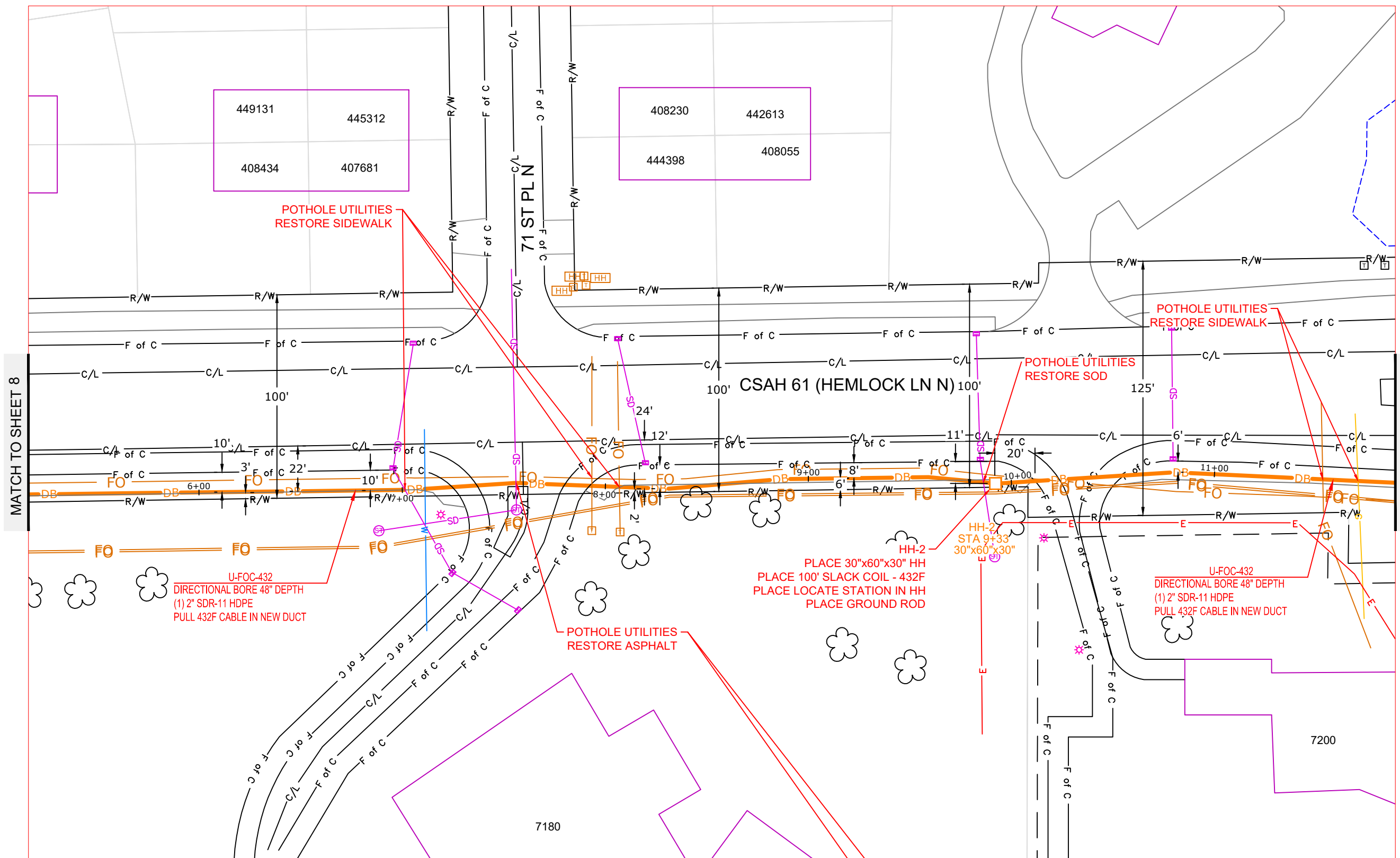


PROJECT: 095295

HEMLOCK LN - 73RD AVE TO 70TH PL

MAPLE GROVE, MN

CLARIFICATION NO.	QUANTITY
-------------------	----------



MCImetro  
ACCESS TRANSMISSION SERVICES, LLC  
OUTSIDE PLANT CONSTRUCTION  
TITLE: FIBER OPTIC CABLE ROUTE  
NED - GOLDEN VALLEY NORTH FAILURE DOMAIN

DATE: 9/30/24

DESIGNER: EFH

DRAWN BY: MI-TECH

REVISIONS

DATE	DESCRIPTION	INITIAL
10/10/24	CONST PACK	SIH

EXCEPT AS MAY BE OTHERWISE PROVIDED BY CONTRACT, THESE DRAWINGS AND SPECIFICATIONS SHALL REMAIN THE PROPERTY OF MCI COMMUNICATIONS SERVICES, INC., BOTH BEING ISSUED IN STRICT CONFIDENCE AND SHALL NOT BE REPRODUCED, COPIED, OR USED FOR ANY PURPOSE WITHOUT SPECIFIC WRITTEN PERMISSION.

SCALE

HORIZONTAL: 1"=50'

VERTICAL: 1"=50'

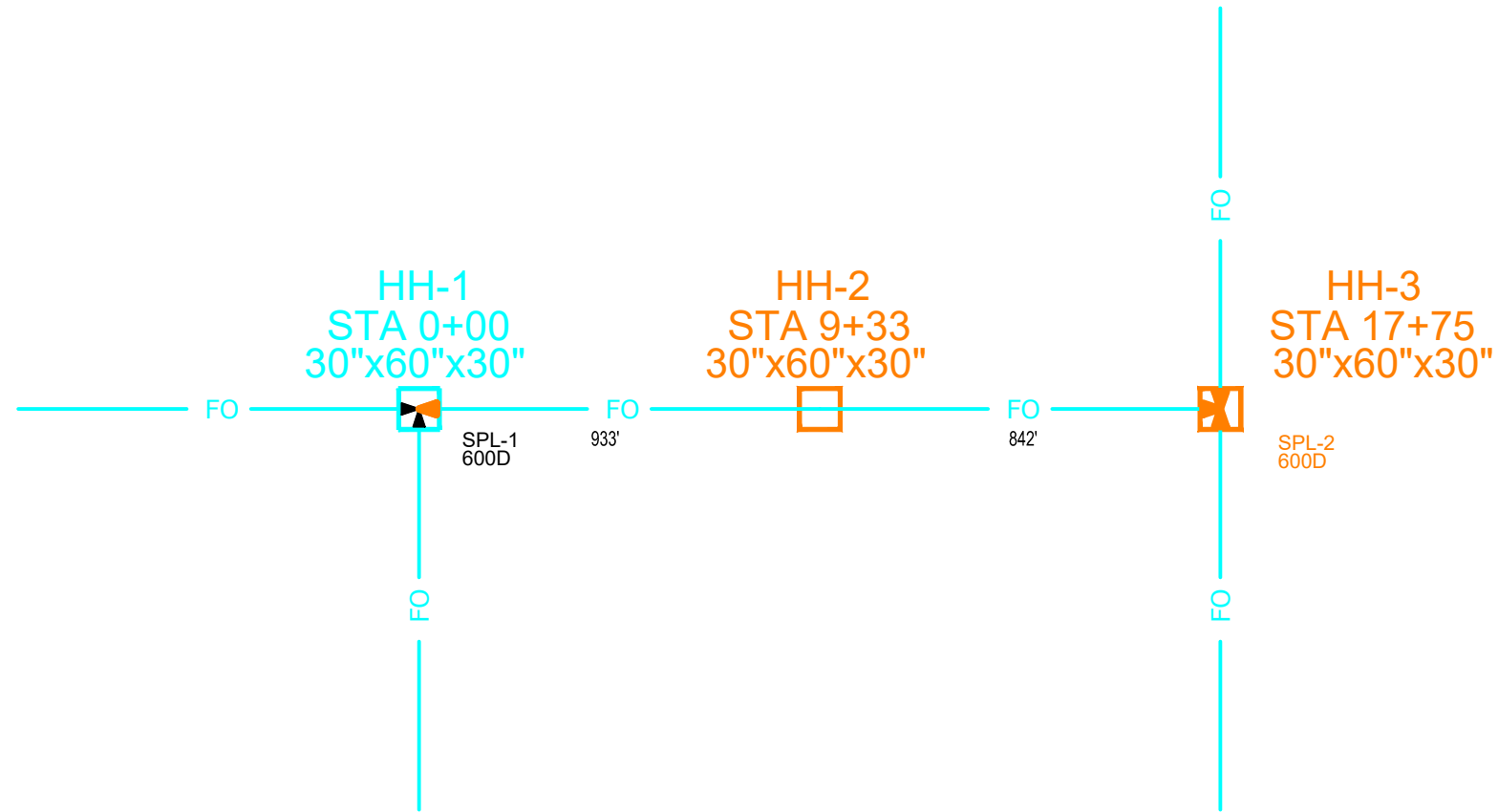
MP TO MP

SHEET 9 OF 10

FILE: MAPLEGROVE\_HEMLOCK-73RD



# SINGLE LINE DIAGRAM



PROJECT: 095295

HEMLOCK LN - 73RD AVE TO 70TH PL

MAPLE GROVE, MN

CLARIFICATION NO. QUANTITY

CLARIFICATION NO.	QUANTITY

MCI  
ACCESS TRANSMISSION SERVICES, LLC



OUTSIDE PLANT CONSTRUCTION

TITLE: FIBER OPTIC CABLE ROUTE

NED - GOLDEN VALLEY NORTH FAILURE DOMAIN

DATE: 9/30/24

DESIGNER: EFH

DRAWN BY: MI-TECH

### REVISIONS

DATE	DESCRIPTION	INITIAL
10/10/24	CONST PACK	SJH

EXCEPT AS MAY BE OTHERWISE PROVIDED BY CONTRACT, THESE DRAWINGS AND SPECIFICATIONS SHALL REMAIN THE PROPERTY OF MCI COMMUNICATIONS SERVICES, INC., BOTH BEING ISSUED IN STRICT CONFIDENCE AND SHALL NOT BE REPRODUCED, COPIED, OR USED FOR ANY PURPOSE WITHOUT SPECIFIC WRITTEN PERMISSION.

### SCALE

HORIZONTAL: 1"=50'

VERTICAL: 1"=50'

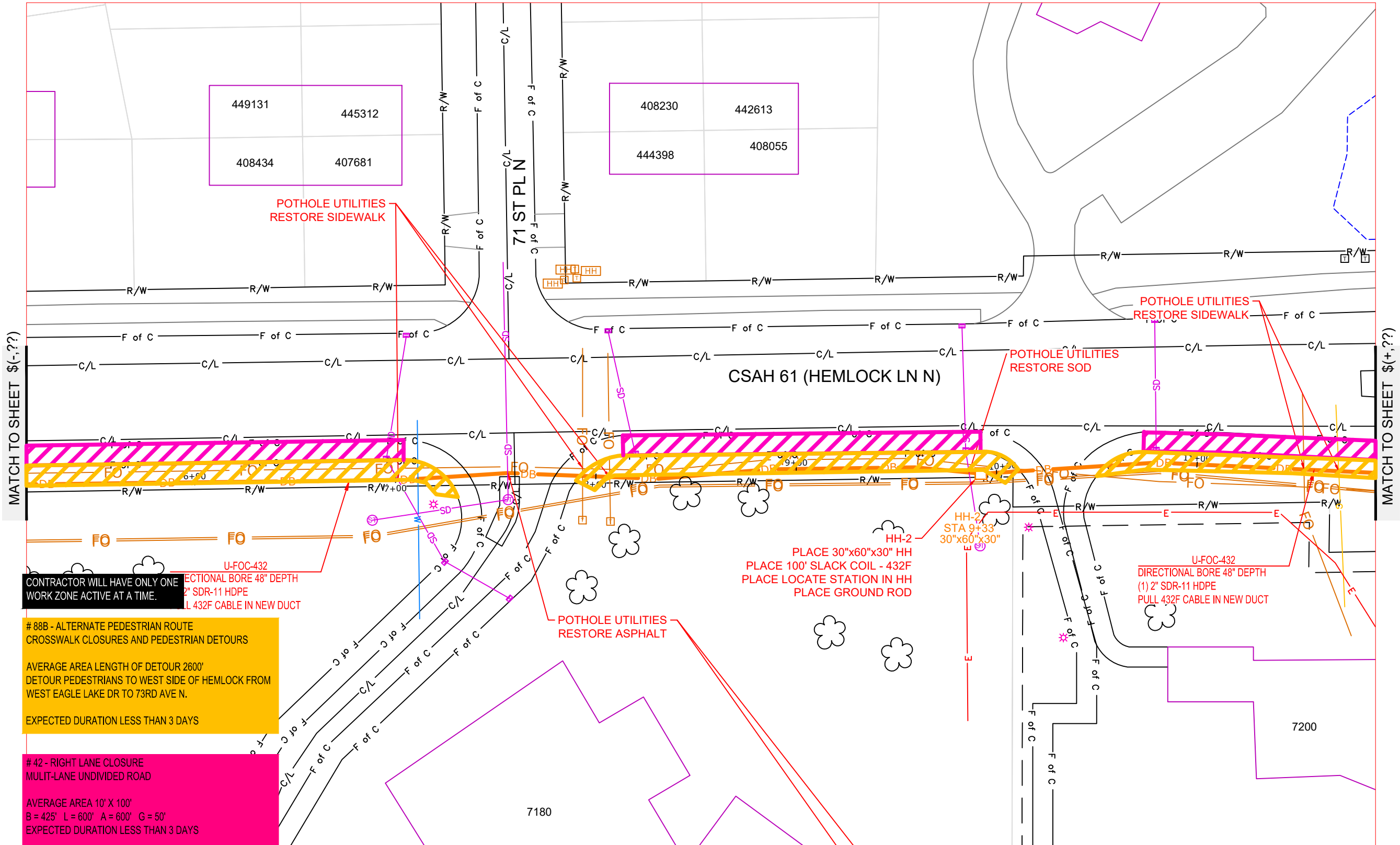
MP \_\_\_\_\_ TO MP \_\_\_\_\_

SHEET A1 OF ??

FILE: MAPLEGROVE\_HEMLOCK-73RD



THE SUBSURFACE UTILITY INFORMATION IN THIS PLAN IS UTILITY QUALITY LEVEL D. THIS UTILITY QUALITY LEVEL WAS DETERMINED ACCORDING TO THE GUIDELINES OF CI/ASCE 38-02, ENTITLED STANDARD GUIDELINES FOR THE COLLECTION AND DEPICTION OF EXISTING SUBSURFACE UTILITY DATA. IT SHALL BE THE CONTRACTORS RESPONSIBILITY TO UTILIZE THE GOPHER STATE ONE CALL EXCAVATION NOTICE SYSTEM REQUIRED MN STATUTE, CHAPTER 216D FOR ALL UNDERGROUND UTILITY LOCATIONS.



MATCH TO SHEET \$(-??)

MATCH TO SHEET \$(+??)

CONTRACTOR WILL HAVE ONLY ONE WORK ZONE ACTIVE AT A TIME.

**# 88B - ALTERNATE PEDESTRIAN ROUTE**  
 CROSSWALK CLOSURES AND PEDESTRIAN DETOURS  
 AVERAGE AREA LENGTH OF DETOUR 2600'  
 DETOUR PEDESTRIANS TO WEST SIDE OF HEMLOCK FROM WEST EAGLE LAKE DR TO 73RD AVE N.  
 EXPECTED DURATION LESS THAN 3 DAYS

**# 42 - RIGHT LANE CLOSURE**  
 MULT-LANE UNDIVIDED ROAD  
 AVERAGE AREA 10' X 100'  
 B = 425' L = 600' A = 600' G = 50'  
 EXPECTED DURATION LESS THAN 3 DAYS

U-FOC-432  
 DIRECTIONAL BORE 48" DEPTH  
 (1) 2" SDR-11 HDPE  
 (1) 432F CABLE IN NEW DUCT

HH-2  
 STA 9+33  
 30"x60"x30"  
 PLACE 30"x60"x30" HH  
 PLACE 100' SLACK COIL - 432F  
 PLACE LOCATE STATION IN HH  
 PLACE GROUND ROD

U-FOC-432  
 DIRECTIONAL BORE 48" DEPTH  
 (1) 2" SDR-11 HDPE  
 PULL 432F CABLE IN NEW DUCT

449131	445312
408434	407681

408230	442613
444398	408055



**PROJECT:** 095295

HEMLOCK LN - 73RD AVE TO 70TH PL  
 MAPLE GROVE, MN

CLARIFICATION NO.	QUANTITY

MCImetro  
 ACCESS TRANSMISSION SERVICES, LLC

MCI  
 OUTSIDE PLANT CONSTRUCTION

TITLE: FIBER OPTIC CABLE ROUTE

NED - GOLDEN VALLEY NORTH FAILURE DOMAIN

DATE: 9/30/24  
 DESIGNER: EFH  
 DRAWN BY: MI-TECH

REVISIONS		
DATE	DESCRIPTION	INITIAL
10/10/24	CONST PACK	SIH

EXCEPT AS MAY BE OTHERWISE PROVIDED BY CONTRACT, THESE DRAWINGS AND SPECIFICATIONS SHALL REMAIN THE PROPERTY OF MCI COMMUNICATIONS SERVICES, INC., BOTH BEING ISSUED IN STRICT CONFIDENCE AND SHALL NOT BE REPRODUCED, COPIED, OR USED FOR ANY PURPOSE WITHOUT SPECIFIC WRITTEN PERMISSION.

SCALE

HORIZONTAL: 1"=50'  
 VERTICAL: 1"=50'

MP \_\_\_\_\_ TO MP \_\_\_\_\_

SHEET TCP-2 OF 10

FILE: MAPLEGROVE\_HEMLOCK-73RD

