

Topline Federal Credit Union
7015 ALVARADO LN N MAPLE
GROVE MN 55311

JB0001860217

Node: MNMPGR121
Legacy: MNMPGR101

USI-PC (Northwest)

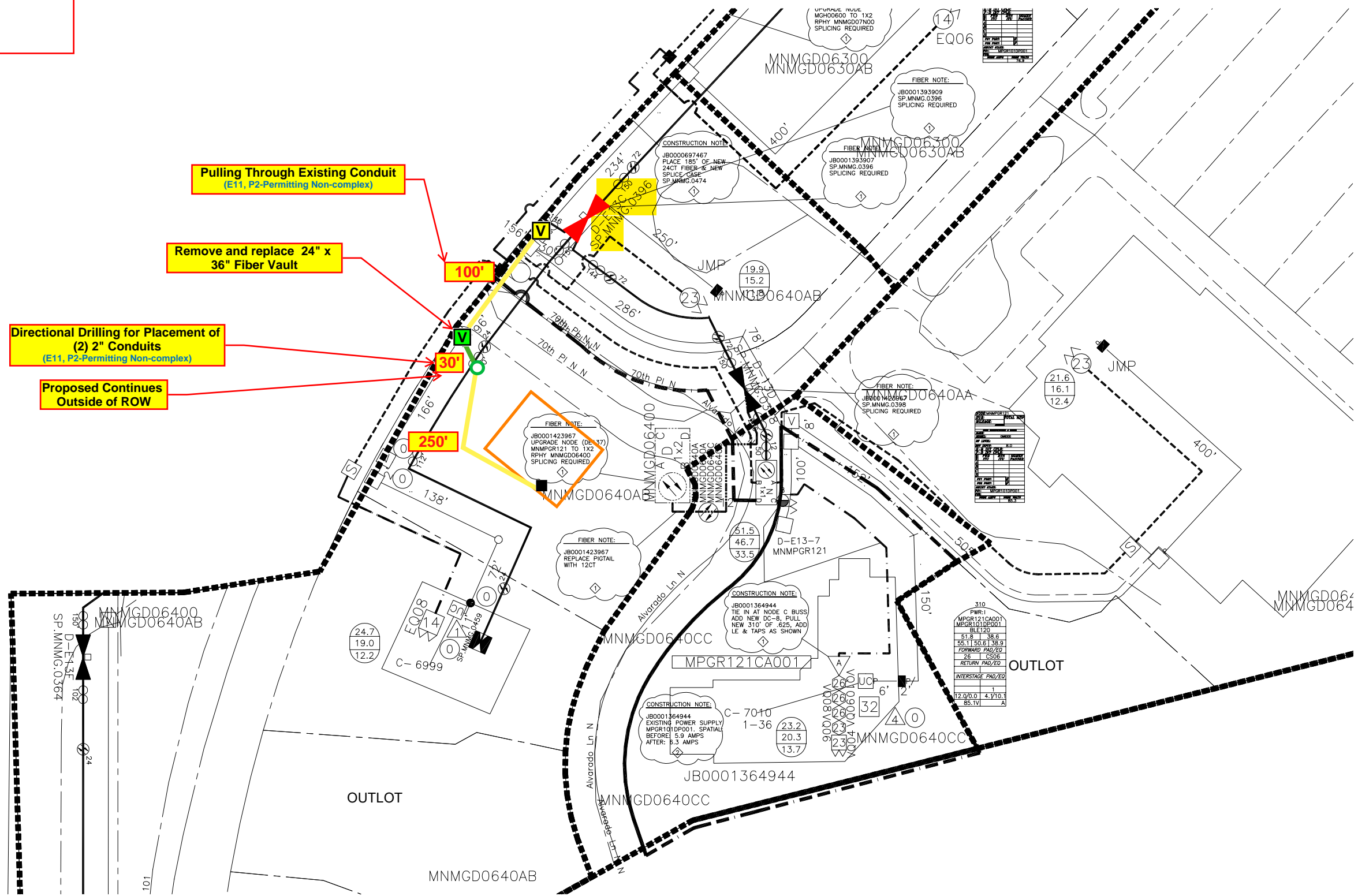
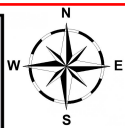
Ryan Otto
 651-279-4275
 Rotto@usi-universal.com

Crystal Dopp
 651-583-1103
 crystal_dopp@comcast.com

Colleen Jakes

(763)-391-0559
 cjakes@toplinecu.com

Green Lin = New Underground Placement	
Yellow Line = Existing Conduit	
Blue Line = Aerial Placement	
New Fiber Vault	
Existing Fiber Vault	
New Pedestal	
Existing Pedestal	



Pulling Through Existing Conduit
 (E11, P2-Permitting Non-complex)

Remove and replace 24" x 36" Fiber Vault

Directional Drilling for Placement of (2) 2" Conduits
 (E11, P2-Permitting Non-complex)

Proposed Continues Outside of ROW

310	
PWR-1	
MPGR121CA001	
51.8	38.6
55.1	50.6
55.1	50.6
26	CS06
INTERSTAGE PAD/ED	
12.0	4.1
0.0	10.1
BS.TV	A

310	
PWR-1	
MPGR121CA001	
51.8	38.6
55.1	50.6
55.1	50.6
26	CS06
INTERSTAGE PAD/ED	
12.0	4.1
0.0	10.1
BS.TV	A

14	
EQ06	
FIBER NOTE:	
JB0001393909	SP.MNMG.0396
SPlicing REQUIRED	

14	
EQ06	
FIBER NOTE:	
JB0001393907	SP.MNMG.0396
SPlicing REQUIRED	

14	
EQ06	
FIBER NOTE:	
JB0001393909	SP.MNMG.0396
SPlicing REQUIRED	

14	
EQ06	
FIBER NOTE:	
JB0001393907	SP.MNMG.0396
SPlicing REQUIRED	

14	
EQ06	
FIBER NOTE:	
JB0001393909	SP.MNMG.0396
SPlicing REQUIRED	

14	
EQ06	
FIBER NOTE:	
JB0001393907	SP.MNMG.0396
SPlicing REQUIRED	

14	
EQ06	
FIBER NOTE:	
JB0001393909	SP.MNMG.0396
SPlicing REQUIRED	

14	
EQ06	
FIBER NOTE:	
JB0001393907	SP.MNMG.0396
SPlicing REQUIRED	

14	
EQ06	
FIBER NOTE:	
JB0001393909	SP.MNMG.0396
SPlicing REQUIRED	

14	
EQ06	
FIBER NOTE:	
JB0001393907	SP.MNMG.0396
SPlicing REQUIRED	

14	
EQ06	
FIBER NOTE:	
JB0001393909	SP.MNMG.0396
SPlicing REQUIRED	

14	
EQ06	
FIBER NOTE:	
JB0001393907	SP.MNMG.0396
SPlicing REQUIRED	

14	
EQ06	
FIBER NOTE:	
JB0001393909	SP.MNMG.0396
SPlicing REQUIRED	

14	
EQ06	
FIBER NOTE:	
JB0001393907	SP.MNMG.0396
SPlicing REQUIRED	

14	
EQ06	
FIBER NOTE:	
JB0001393909	SP.MNMG.0396
SPlicing REQUIRED	