

- NOTES:**
- The orientation of this bearing system is based on the Hennepin County coordinate grid (NAD 83-2011 Adj.).
 - Utility depths are measured at pothole locations depicted hereon. Utility depth measurements provided by Xcel Energy.
 - The utilities depicted hereon are mapped in accordance with SUE Levels A and C. Pothole locations are depicted hereon. Other utility markings provided pursuant to Gopher State One Call Requests made by Xcel Energy are mapped and depicted hereon.
 - Pothole all utilities within 2 feet of the proposed duct line.
 - BENCHMARK: Top nut of hydrant located at the intersection of Shadow Creek Rd. and Weaver Lake Rd.
Elevation = 911.69 feet. (NAVD 88)

- LEGEND:**
- POTHOLE
 - CATCH BASIN
 - 32" X 32" 9 WAY DUCT BY XCEL
 - SANITARY SEWER
 - STORM SEWER
 - UNDERGROUND ELECTRIC
 - UNDERGROUND FIBER OPTIC
 - UNDERGROUND TELECOMMUNICATION
 - UNDERGROUND GAS
 - EXISTING CONTOUR LINE
 - BITUMINOUS SURFACE
 - CONCRETE SURFACE

FIELD BOOK	PAGE	FIELDWORK CHIEF:	REVISIONS		
			NO.	DATE	DESCRIPTION
DRAWING NAME: 42363_Xcel.dwg	JOB NO. 42363	CHECKED BY: ER	1	2/14/25	CITY REVIEW COMMENTS
			2	2/21/25	MODIFIED DUCT OVER CULVERTS
			3	3/19/25	XCEL REVIEW COMMENTS

PLAN & PROFILE

SURVEY FOR:

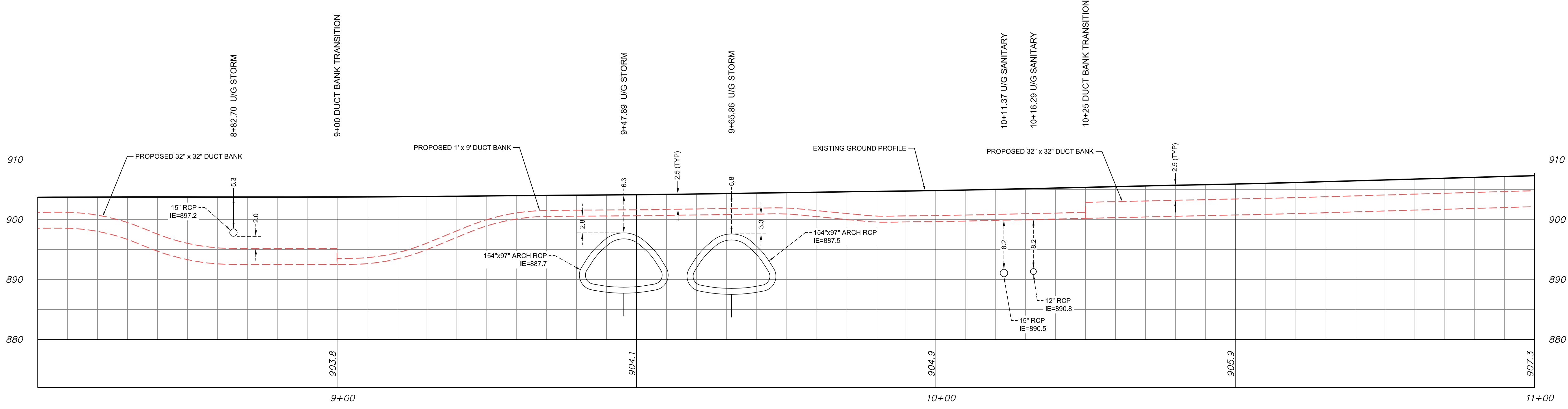
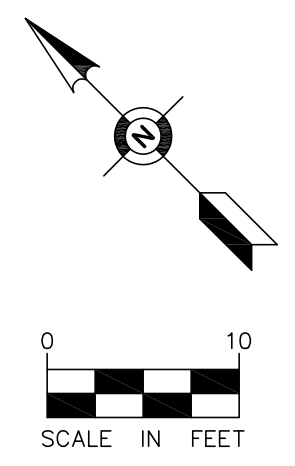
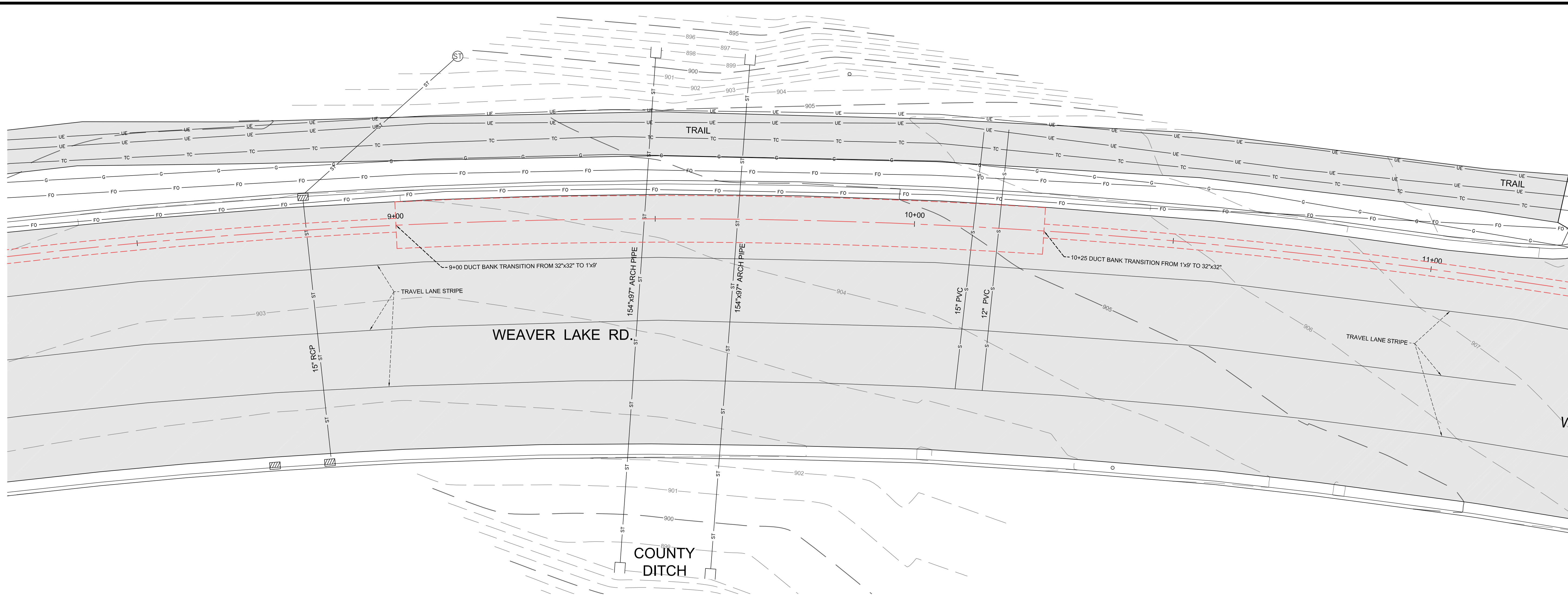
NORTHERN STATES POWER
MINNESOTA

PROPERTY ADDRESS:

**INTERSECTION OF WEAVER LAKE ROAD
& TARLETON CREST N.
MAPLE GROVE, MN**

EFNS 475 Old Highway 8 NW, Suite 200
New Brighton, Minnesota 55112
PHONE: (612) 466-3300
WWW.EFNSURVEY.COM

Egan, Field & Nowak, Inc. COPYRIGHT © 2024 By EGAN, FIELD & NOWAK, INC.
land surveyors since 1872



- NOTES:**
- The orientation of this bearing system is based on the Hennepin County coordinate grid (NAD 83-2011 Adj.).
 - Utility depths are measured at pothole locations depicted hereon. Utility depth measurements provided by Xcel Energy.
 - The utilities depicted hereon are mapped in accordance with SUE Levels A and C. Pothole locations are depicted hereon. Other utility markings provided pursuant to Gopher State One Call Requests made by Xcel Energy are mapped and depicted hereon.
 - Pothole all utilities within 2 feet of the proposed duct line.
 - BENCHMARK: Top nut of hydrant located at the intersection of Shadow Creek Rd. and Weaver Lake Rd.
Elevation = 911.69 feet. (NAVD 88)

- LEGEND:**
- POTHOLE
 - STORM MANHOLE
 - CULVERT
 - CATCH BASIN
 - 32" x 32" 9 WAY DUCT BY XCEL
 - SANITARY SEWER
 - STORM SEWER
 - UNDERGROUND ELECTRIC
 - UNDERGROUND FIBER OPTIC
 - UNDERGROUND TELECOMMUNICATION
 - UNDERGROUND GAS
 - EXISTING CONTOUR LINE
 - BITUMINOUS SURFACE

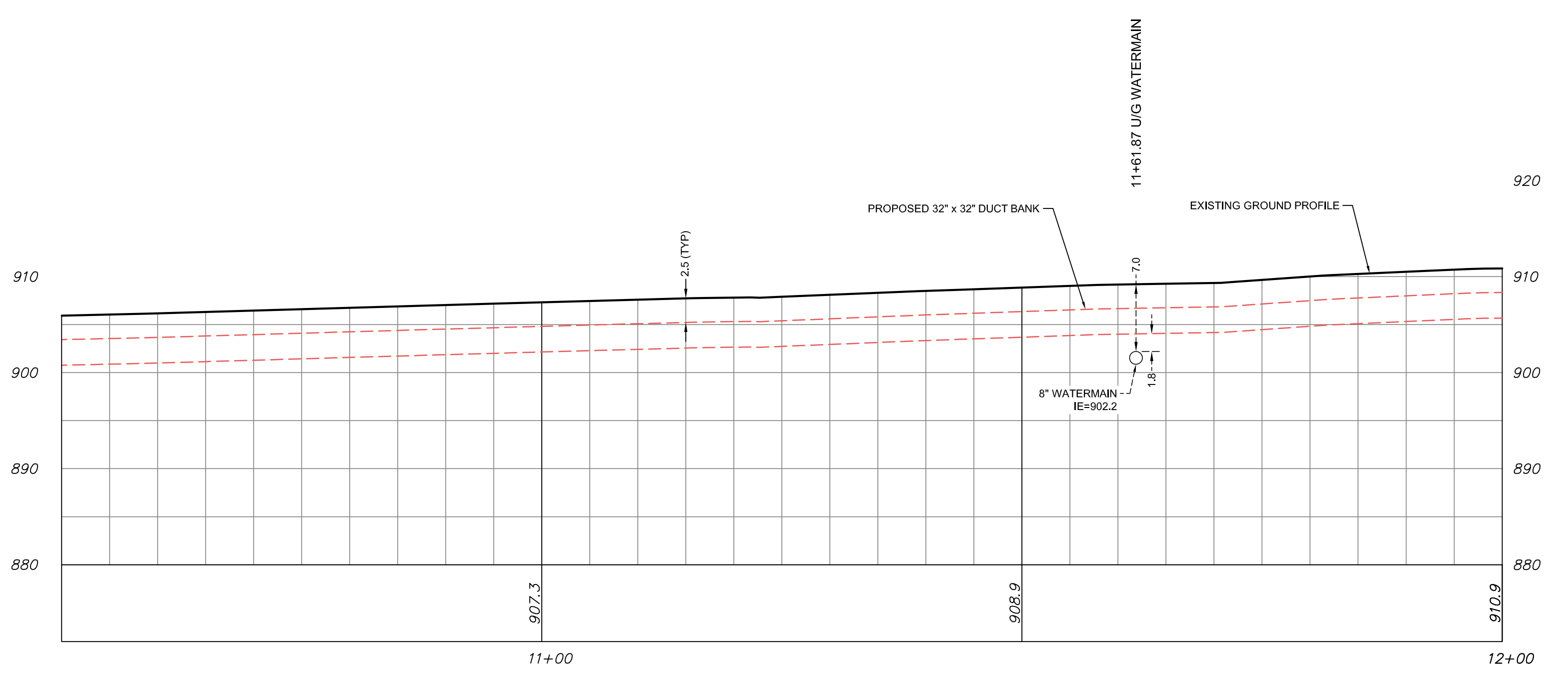
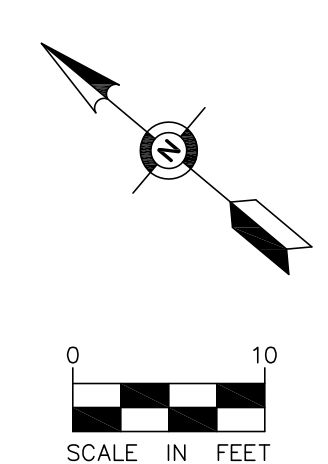
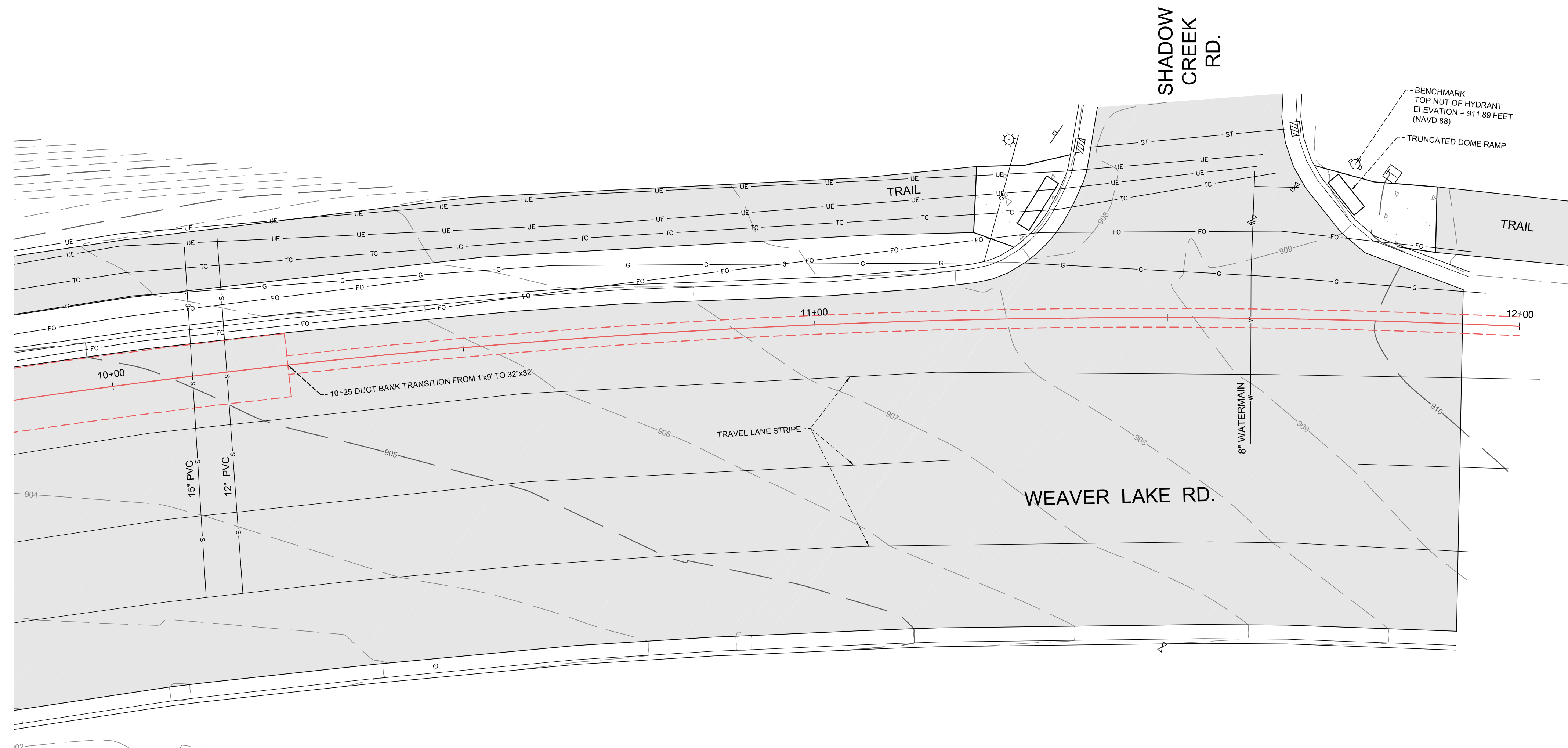
FIELD BOOK	PAGE	FIELDWORK CHIEF:	REVISIONS		
			NO.	DATE	DESCRIPTION
DRAWING NAME: 42363_Xcel.dwg	JOB NO. 42363	CHECKED BY: ER	1	2/14/25	CITY REVIEW COMMENTS
			2	2/21/25	MODIFIED DUCT OVER CULVERTS
			3	3/19/25	XCEL REVIEW COMMENTS

PLAN & PROFILE

SURVEY FOR:
 NORTHERN STATES POWER MINNESOTA

PROPERTY ADDRESS:
 WEAVER LAKE ROAD &
 COUNTY DITCH CROSSING
 MAPLE GROVE, MN

Egan, Field & Nowak, Inc.
 475 Old Highway 8 NW, Suite 200
 New Brighton, Minnesota 55112
 PHONE: (612) 466-3300
 WWW.EFNSURVEY.COM
 COPYRIGHT © 2024 By EGAN, FIELD & NOWAK, INC.
 Land surveyors since 1872



NOTES:

- The orientation of this bearing system is based on the Hennepin County coordinate grid (NAD 83-2011 Adj.).
- Utility depths are measured at pothole locations depicted hereon. Utility depth measurements provided by Xcel Energy.
- The utilities depicted hereon are mapped in accordance with SUE Levels A and C. Pothole locations are depicted hereon. Other utility markings provided pursuant to Gopher State One Call Requests made by Xcel Energy are mapped and depicted hereon.
- Pothole all utilities within 2 feet of the proposed duct line.
- BENCHMARK: Top nut of hydrant located at the intersection of Shadow Creek Rd. and Weaver Lake Rd.
Elevation = 911.69 feet. (NAVD 88)

LEGEND:

- POTHOLE
- LIGHT
- TELEPHONE PEDESTAL
- WATER GATE VALVE
- HYDRANT
- SIGN
- CATCH BASIN
- 32" X 32" X 9 WAY DUCT BY XCEL
- WATERMAIN
- SANITARY SEWER
- STORM SEWER
- UNDERGROUND ELECTRIC
- UNDERGROUND FIBER OPTIC
- UNDERGROUND TELECOMMUNICATION
- UNDERGROUND GAS
- EXISTING CONTOUR LINE
- BITUMINOUS SURFACE
- CONCRETE SURFACE

FIELD BOOK	PAGE	FIELDWORK CHIEF:	REVISIONS		
			NO.	DATE	DESCRIPTION
DRAWING NAME: 42363_Xcel.dwg	JOB NO. 42363	CHECKED BY: ER	1	2/14/25	CITY REVIEW COMMENTS
			2	2/21/25	MODIFIED DUCT OVER CULVERTS
			3	3/19/25	XCEL REVIEW COMMENTS

PLAN & PROFILE

SURVEY FOR:

NORTHERN STATES POWER
MINNESOTA

PROPERTY ADDRESS:

**INTERSECTION OF WEAVER LAKE ROAD
& SHADOW CREEK ROAD
MAPLE GROVE, MN**

Egan, Field & Nowak, Inc.
475 Old Highway 8 NW, Suite 200
New Brighton, Minnesota 55112
PHONE: (612) 466-3300
WWW.EFNSURVEY.COM
Land surveyors since 1872