



CONTRACTOR NAME: Centerpoint Energy	
CONTRACTOR JOB #: 110934676	<b>MGC#24-76246</b>
PREPARED BY: Joel Truckenbrod, T.C.S. # 3365	
DATE PREPARED: 8/16/24	DATE REVISED: -

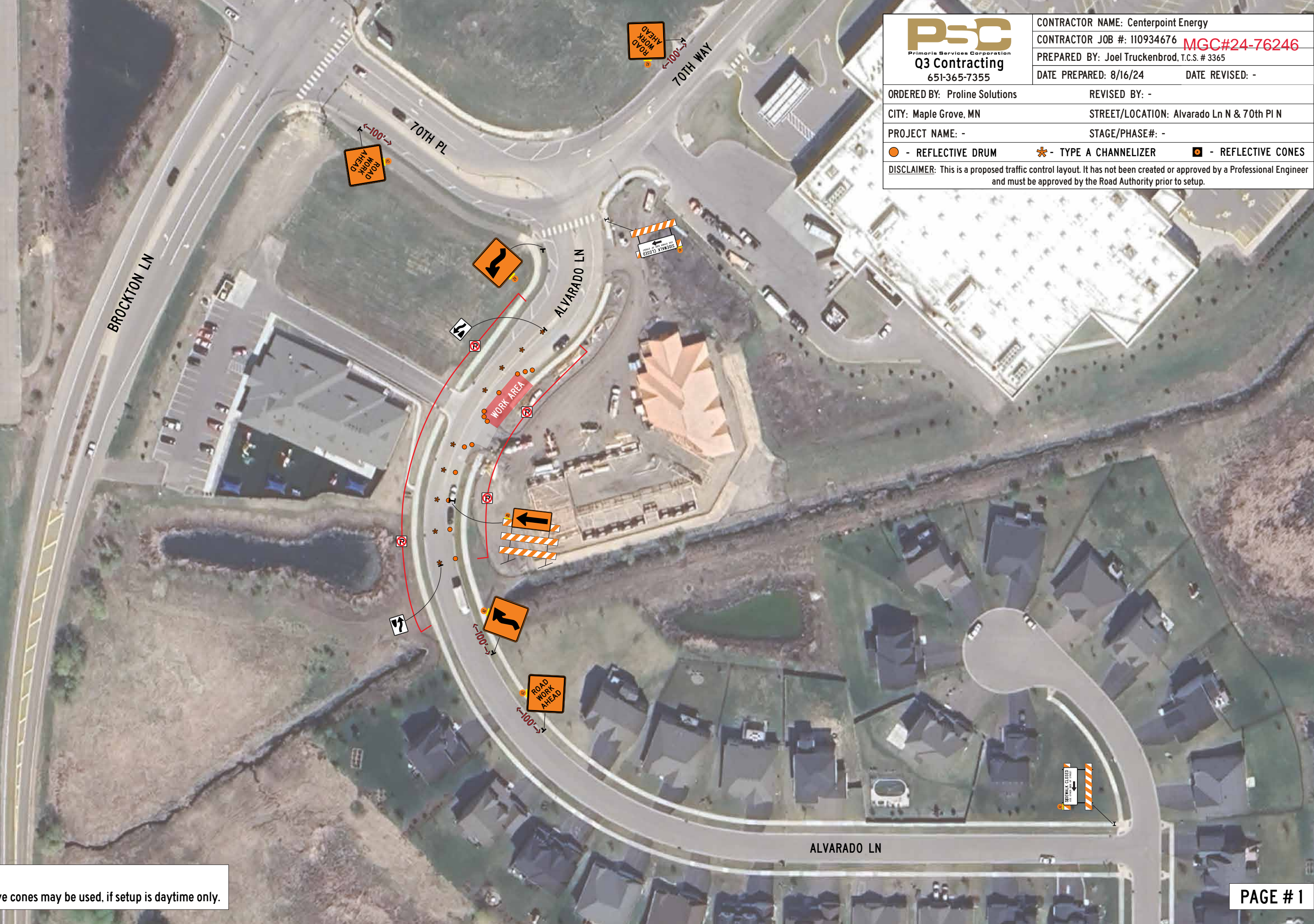
ORDERED BY: Proline Solutions	REVISED BY: -
-------------------------------	---------------

CITY: Maple Grove, MN	STREET/LOCATION: Alvarado Ln N & 70th Pl N
-----------------------	--

PROJECT NAME: -	STAGE/PHASE#: -
-----------------	-----------------

- REFLECTIVE DRUM    
 - TYPE A CHANNELIZER    
 - REFLECTIVE CONES

DISCLAIMER: This is a proposed traffic control layout. It has not been created or approved by a Professional Engineer and must be approved by the Road Authority prior to setup.



**NOTE:**  
 Reflective cones may be used, if setup is daytime only.





CONTRACTOR NAME: Centerpoint Energy	
CONTRACTOR JOB #: 110934676	
PREPARED BY: Joel Truckenbrod, T.C.S. # 3365	DATE PREPARED: 8/16/24
DATE PREPARED: 8/16/24	DATE REVISED: -

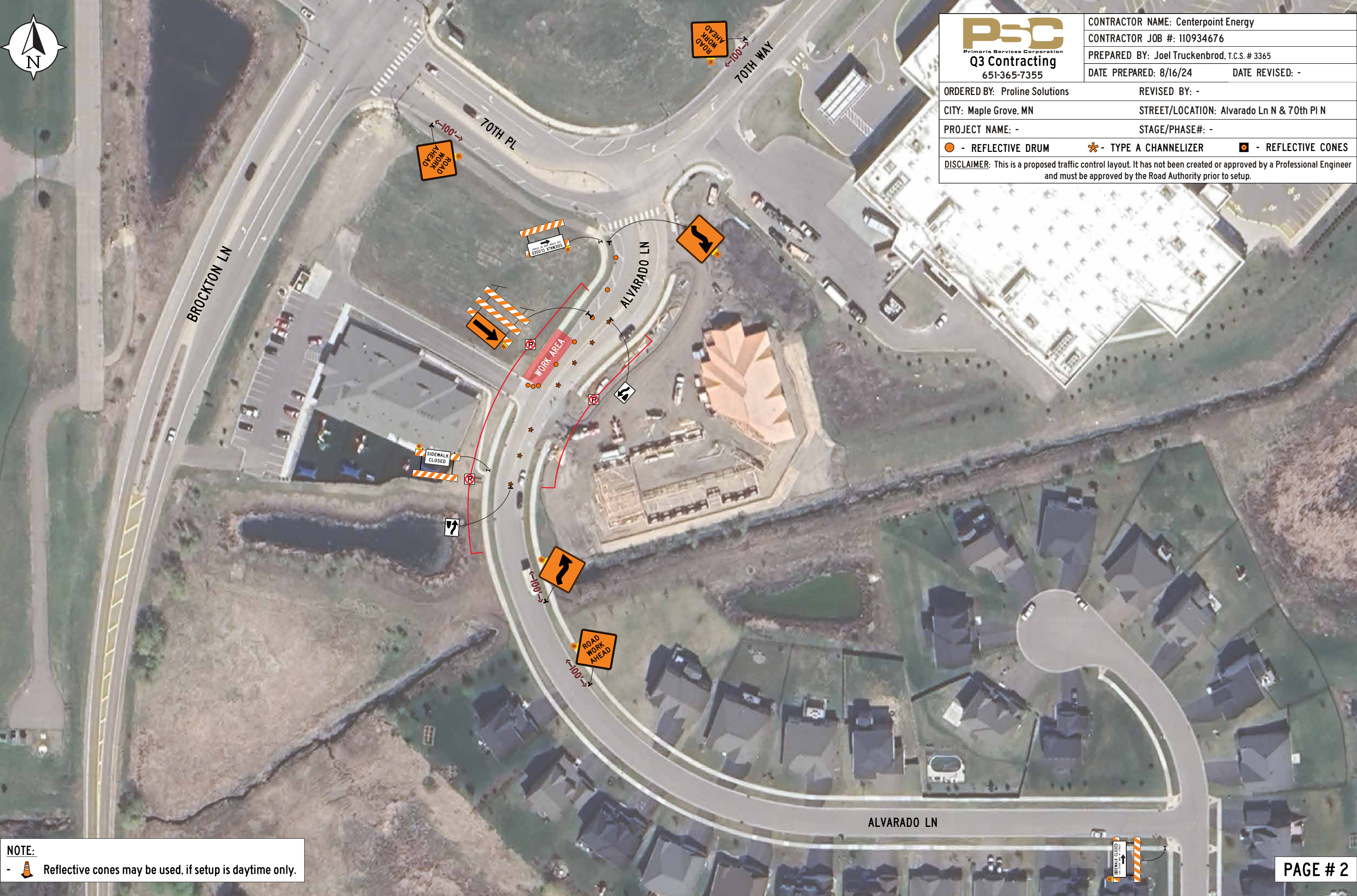
ORDERED BY: Proline Solutions	REVISED BY: -
-------------------------------	---------------

CITY: Maple Grove, MN	STREET/LOCATION: Alvarado Ln N & 70th Pl N
-----------------------	--

PROJECT NAME: -	STAGE/PHASE#: -
-----------------	-----------------

- REFLECTIVE DRUM    
 - TYPE A CHANNELIZER    
 - REFLECTIVE CONES

DISCLAIMER: This is a proposed traffic control layout. It has not been created or approved by a Professional Engineer and must be approved by the Road Authority prior to setup.



**NOTE:**  
 Reflective cones may be used, if setup is daytime only.





CONTRACTOR NAME: Centerpoint Energy	
CONTRACTOR JOB #: 110934676	
PREPARED BY: Joel Truckenbrod, T.C.S. # 3365	DATE PREPARED: 8/16/24
DATE PREPARED: 8/16/24	DATE REVISED: -
ORDERED BY: Proline Solutions	REVISED BY: -
CITY: Maple Grove, MN	STREET/LOCATION: Alvarado Ln N & 70th Pl N
PROJECT NAME: -	STAGE/PHASE#: -
○ - REFLECTIVE DRUM	* - TYPE A CHANNELIZER
◻ - REFLECTIVE CONES	
DISCLAIMER: This is a proposed traffic control layout. It has not been created or approved by a Professional Engineer and must be approved by the Road Authority prior to setup.	

BROCKTON LN

70TH PL

70TH WAY

ALVARADO LN

ALVARADO LN



SIDEWALK CLOSURES TO ALTERNATE AS NEEDED. ONE SIDE TO REMAIN OPEN. TO MAINTAIN PED ACCESS.

**NOTE:**  
 - Reflective cones may be used, if setup is daytime only.