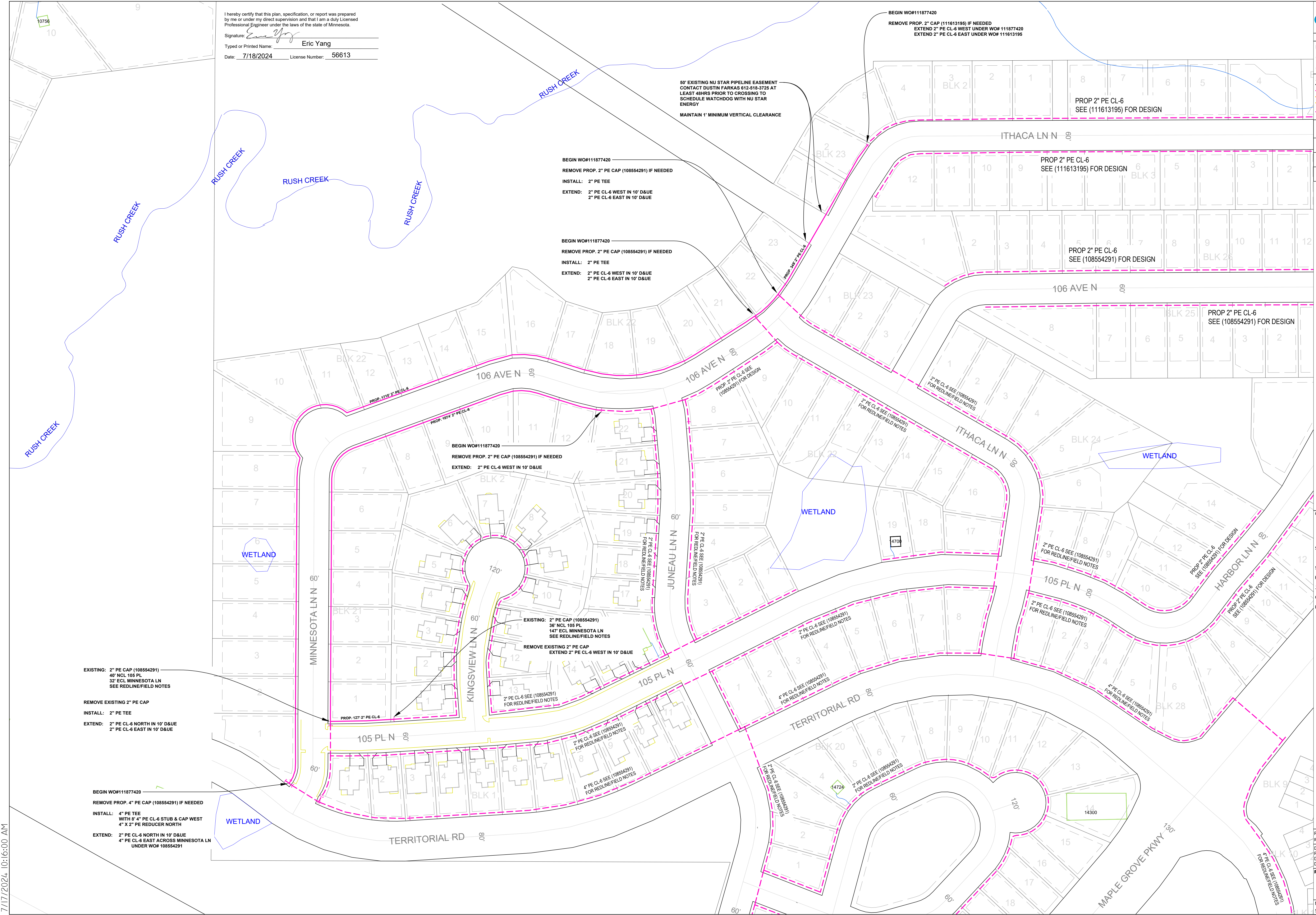


I hereby certify that this plan, specification, or report was prepared by me or under my direct supervision and that I am a duly Licensed Professional Engineer under the laws of the state of Minnesota.
 Signature: *Eric Yang*
 Typed or Printed Name: **Eric Yang**
 Date: **7/18/2024** License Number: **56613**

CenterPoint Energy
 PROPRIETARY AND CONFIDENTIAL
 PROJECT #: **111877420**
 CITY: MAPLE GROVE
 COUNTY: HENNEPIN
LEGEND:
 4" PVC CONDUIT
 IN SERVICE
 PROPOSED
 PROPOSED ABANDONED
 ABANDONED
 NOT A PART OF PROJECT
 SEE NOTES

PIPE SUMMARY
11,548' 2" PE CL-6
22' 4" PE CL-6
11,570' TOTAL PIPE



EXISTING: 2" PE CAP (108554291)
 40' NCL 105 PL
 32' ECL MINNESOTA LN
 SEE REDLINE/FIELD NOTES

REMOVE EXISTING 2" PE CAP
 INSTALL: 2" PE TEE
 EXTEND: 2" PE CL-6 NORTH IN 10' D&UE
 2" PE CL-6 EAST IN 10' D&UE

BEGIN WO#111877420
 REMOVE PROP. 4" PE CAP (108554291) IF NEEDED
 INSTALL: 4" PE TEE
 WITH 8" 4" PE CL-6 STUB & CAP WEST
 4" X 2" PE REDUCER NORTH
 EXTEND: 2" PE CL-6 NORTH IN 10' D&UE
 4" PE CL-6 EAST ACROSS MINNESOTA LN
 UNDER WO# 108554291

BEGIN WO#111877420
 REMOVE PROP. 2" PE CAP (108554291) IF NEEDED
 INSTALL: 2" PE TEE
 EXTEND: 2" PE CL-6 WEST IN 10' D&UE
 2" PE CL-6 EAST IN 10' D&UE

BEGIN WO#111877420
 REMOVE PROP. 2" PE CAP (108554291) IF NEEDED
 INSTALL: 2" PE TEE
 EXTEND: 2" PE CL-6 WEST IN 10' D&UE
 2" PE CL-6 EAST IN 10' D&UE

BEGIN WO#111877420
 REMOVE PROP. 2" PE CAP (108554291) IF NEEDED
 EXTEND: 2" PE CL-6 WEST IN 10' D&UE

EXISTING: 2" PE CAP (108554291)
 38' NCL 105 PL
 147' ECL MINNESOTA LN
 SEE REDLINE/FIELD NOTES
 REMOVE EXISTING 2" PE CAP
 EXTEND 2" PE CL-6 WEST IN 10' D&UE

2" PE CL-6 SEE (108554291)
 FOR REDLINE/FIELD NOTES

2" PE CL-6 SEE (108554291)
 FOR REDLINE/FIELD NOTES

4" PE CL-6 SEE (108554291)
 FOR REDLINE/FIELD NOTES

50' EXISTING NU STAR PIPELINE EASEMENT
 CONTACT DUSTIN FARKAS 612-518-3725 AT
 LEAST 48HRS PRIOR TO CROSSING TO
 SCHEDULE WATCHDOG WITH NU STAR
 ENERGY
 MAINTAIN 1' MINIMUM VERTICAL CLEARANCE

BEGIN WO#111877420
 REMOVE PROP. 2" PE CAP (111613195) IF NEEDED
 EXTEND 2" PE CL-6 WEST UNDER WO# 111877420
 EXTEND 2" PE CL-6 EAST UNDER WO# 111613195

PROP 2" PE CL-6
 SEE (111613195) FOR DESIGN

PROP 2" PE CL-6
 SEE (111613195) FOR DESIGN

PROP 2" PE CL-6
 SEE (108554291) FOR DESIGN

PROP 2" PE CL-6
 SEE (108554291) FOR DESIGN

2" PE CL-6 SEE (108554291)
 FOR REDLINE/FIELD NOTES

PROP 2" PE CL-6
 SEE (108554291) FOR DESIGN

2" PE CL-6 SEE (108554291)
 FOR REDLINE/FIELD NOTES

PROP 2" PE CL-6
 SEE (108554291) FOR DESIGN

2" PE CL-6 SEE (108554291)
 FOR REDLINE/FIELD NOTES

2" PE CL-6 SEE (108554291)
 FOR REDLINE/FIELD NOTES

4" PE CL-6 SEE (108554291)
 FOR REDLINE/FIELD NOTES

2" PE CL-6 SEE (108554291)
 FOR REDLINE/FIELD NOTES

COPIES:
 PIPELINE INTEGRITY PACKET: N
 STATION MANAGER: N
 DD NUMBER: N
 CORROSION: N
 EMP: N
 SITE CONTACT: MARIO COCHARELLA
 612-868-7582
 DEVELOPER
 SURVEYOR REQUIRED? N
 RETURN PACKET TO ENG? N
 JOB BRIEFING REQUIRED? N
 GFIP #: N
 PERMITS: CITY OF MAPLE GROVE

SALES REP: JASON KOCKE
 PROJECT DESCRIPTION: NBRE
 RUSH HOLLOW 3RD ADDITION
 DESIGNER: JOE NICHOLAS
 PHONE #: 612-512-8888
 DRAWN BY: JOE NICHOLAS
 DESIGN DATE: 06/28/2024

REVISION INFO:
 MAIN
 SS#: SCALE: 1" = 80'
 SHEET 2 OF 3

7/17/2024 10:16:00 AM