

CONSTRUCTION NOTES

Obtain Construction Plans from Designer prior to starting job.

Coordinate with Contractor / Engineering Firm for exact locations of proposed structures and facilities prior to installation of gas facilities.

Install new main as shown or as directed in field at time of installation. Contact Engineering for approval of field generated changes.

Long side mains and services to be installed below proposed sub-cuts (See Construction Plans).

All test points should be installed in the boulevard or other acceptable locations and avoid placement in driving lanes.

Verify Coating test results if required prior to abandoning main.

CONSTRUCTION PROCEDURES

Install; Clean and Test; and Put in Service; Proposed new main per CenterPoint Energy Construction and Services Manual.

Procedure for tapping or making tie-ins to existing gas mains: Verify existing gas main size, type, and location prior to tapping or making tie-in. Monitor and verify, using a pressure gauge, existing gas main Pressure Class within the bell hole of tap location or tie-in location prior to tapping or making tie-in.

Purge new main until essentially 100% reading is obtained on Combustible Gas Indicator. See CenterPoint Energy Construction and Service Manual Section CS-B-1.230 for purging mains into service.

Complete all Service / Meter Work as directed. (See Service Survey)

See Abandonment Procedures for abandonment and purging procedures.

Install a marker ball at a new end of main, at a valve, at each end of a horizontal offset, at road crossings and at any fitting or pressure control identified as needing to be located in the future. Refer to CenterPoint Energy Construction and Service Manual section CS-B-1.310 for installation procedures.

ABANDONMENT PROCEDURES

See Construction Procedures for installation of mains and services prior to abandonments.

▲ The project includes work on one-way feed mains.
 ▲ Ensure all proposed main is in service, all taps are completed
 ▲ And all services have been transferred to new main prior to abandonments.

Cut and abandon existing main as shown. Purge abandoned mains until essentially 0% gas reading is obtained on Combustible Gas Indicator. See CenterPoint Energy Construction and Services Manual Section CS-B-1.110 and Section CS-B-1.230 for purging mains out of service using air movers.

Cross Compression may be used to lower pressure in line prior to venting trapped gas and purging line out of service.

Warning - cross compression into a one-way feed system requires Engineering approval. Trapped gas to be transferred to **CL-6 (55) PSIG** system. Do not exceed **55 PSIG** on the outlet side of the Cross Compression unit. Monitor using digital gauge on outlet side of unit.

Contact Area C&M Personnel prior to starting job to review Cross Compression process and to arrange field support.

For typical connection of Cross Compression:
 Plastic Mains: Use a 1-1/4" PE Service Tee with a temp. 1-1/4" anodeless riser with valve
 Steel Mains: Use a 2" TOR Drill Nipple.

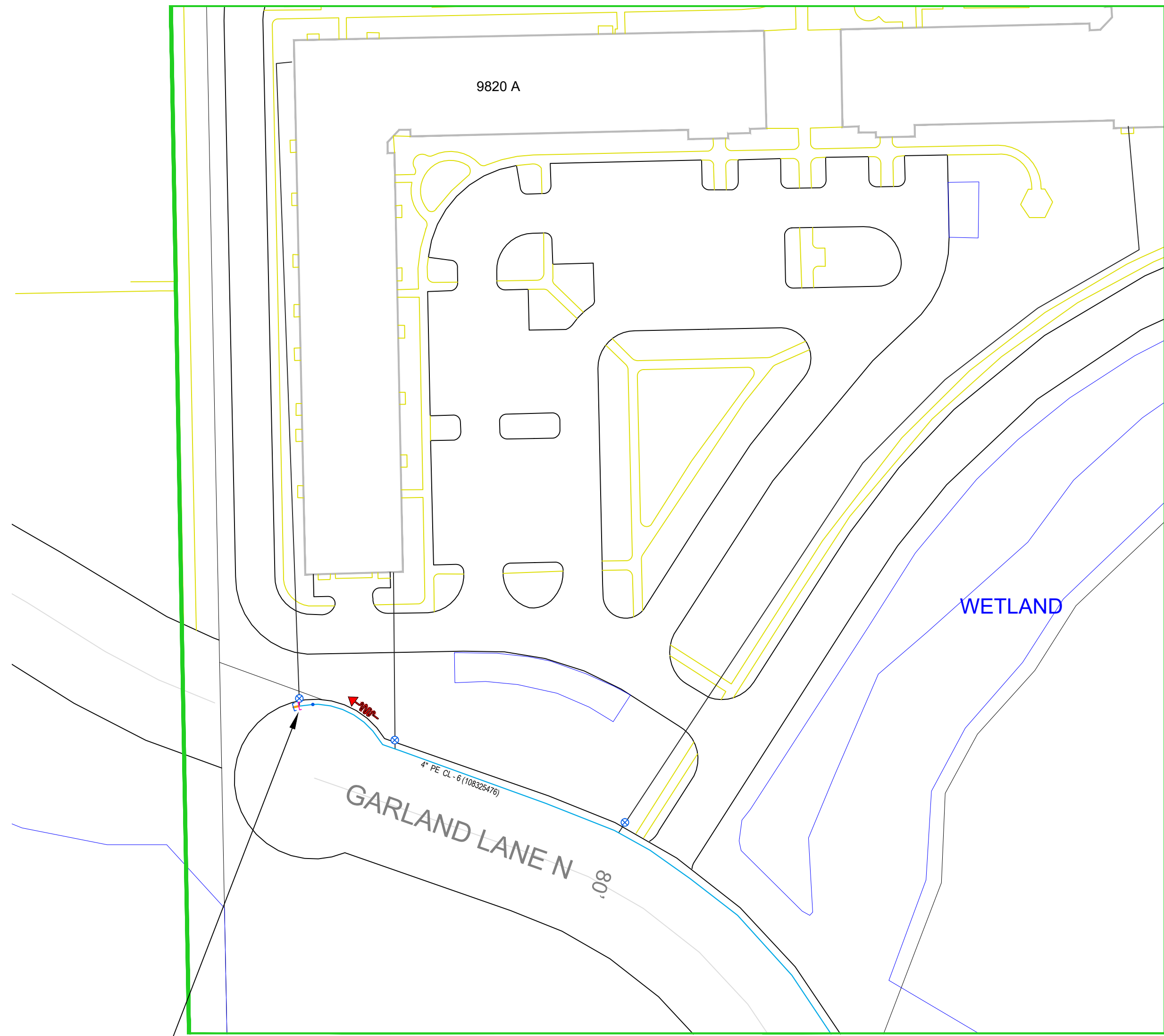
Contact Engineering with questions.

When butt fusing to existing in-service polyethylene, visually inspect for the presence of hydrocarbon permeation immediately after removing fusion iron. If any bubbling is identified on the heated surface, do not join to new PE pipe. Allow to cool and cut this end off (12" length) and send to the Golden Valley Lab with street location and W.O. #. Complete tie-in/extension using an electrofusion coupling(s).

Document in field notes.

Pipe < 4-inches Diameter (Unregulated PCB area):
 Project area cleared for internal impacts. Pipe being removed is unregulated for disposal if coating does not exist or is non-asbestos. Refer to CNP Construction and Service Manual CS-B-1.110, CS-B-1.330, and CS-B-1.100, for pipe to be abandoned.

STAKING CONTACT TODD ATHMANN 320-267-7643



EXISTING: 4" PE CAP (108325476)
 5' BACK OF CURB GARLAND LN N
 1402' NCL GARLAND LN N

CUT & ABANDON: 4" PE CL-6 WEST
 @ 5' BACK OF PROPOSED CURB LINE.
 USE: 4" PE CAP

NOTE: INTENT IS TO ABANDON 4" PE CL-6 BEHIND
 PROPOSED CURB LINE. VERIFY WITH FIELD
 STAKING.



PROPRIETARY AND CONFIDENTIAL

PROJECT #: **111977665**

CITY: MAPLE GROVE

COUNTY: HENNEPIN

LEGEND:

- IN SERVICE
- PROPOSED
- PROPOSED ABANDONED
- ABANDONED
- NOT A PART OF PROJECT
- SEE NOTES

Proposed Abandoned Pipe

4" 4" PE Class 6

4" TOTAL PIPE

COPIES:
 PIPELINE INTEGRITY PACKET: N
 STATION MANAGER: N
 DD NUMBER: N/A
 CORROSION: N/A
 EMP: N

SITE CONTACT: MARIAN FAJUTAG
 STANTEC - CONSTRUCTION MANAGER
 612-834-9606

SURVEYOR REQUIRED? N

RETURN PACKET TO ENG? N

JOB BRIEFING REQUIRED? N

GFIP #: N/A

PERMITS: MAPLE GROVE

PROJECT DESCRIPTION: SREL
 GARLAND LN N

DESIGNER: KEVIN SCOTT
 PHONE#: 612-321-5508
 DRAWN BY: KEVIN SCOTT
 DESIGN DATE: 05/06/2024

REVISION INFO:

I hereby certify that this plan, specification, or report was prepared by me or under my direct supervision and that I am a duly Licensed Professional Engineer under the laws of the state of Minnesota.

Signature: _____

Typed or Printed Name: _____

Date: _____ License Number: _____

MAIN SCALE: 1" : 60'
 SS#: # SHEET 1 OF 1

5/8/2024 10:25:34 AM