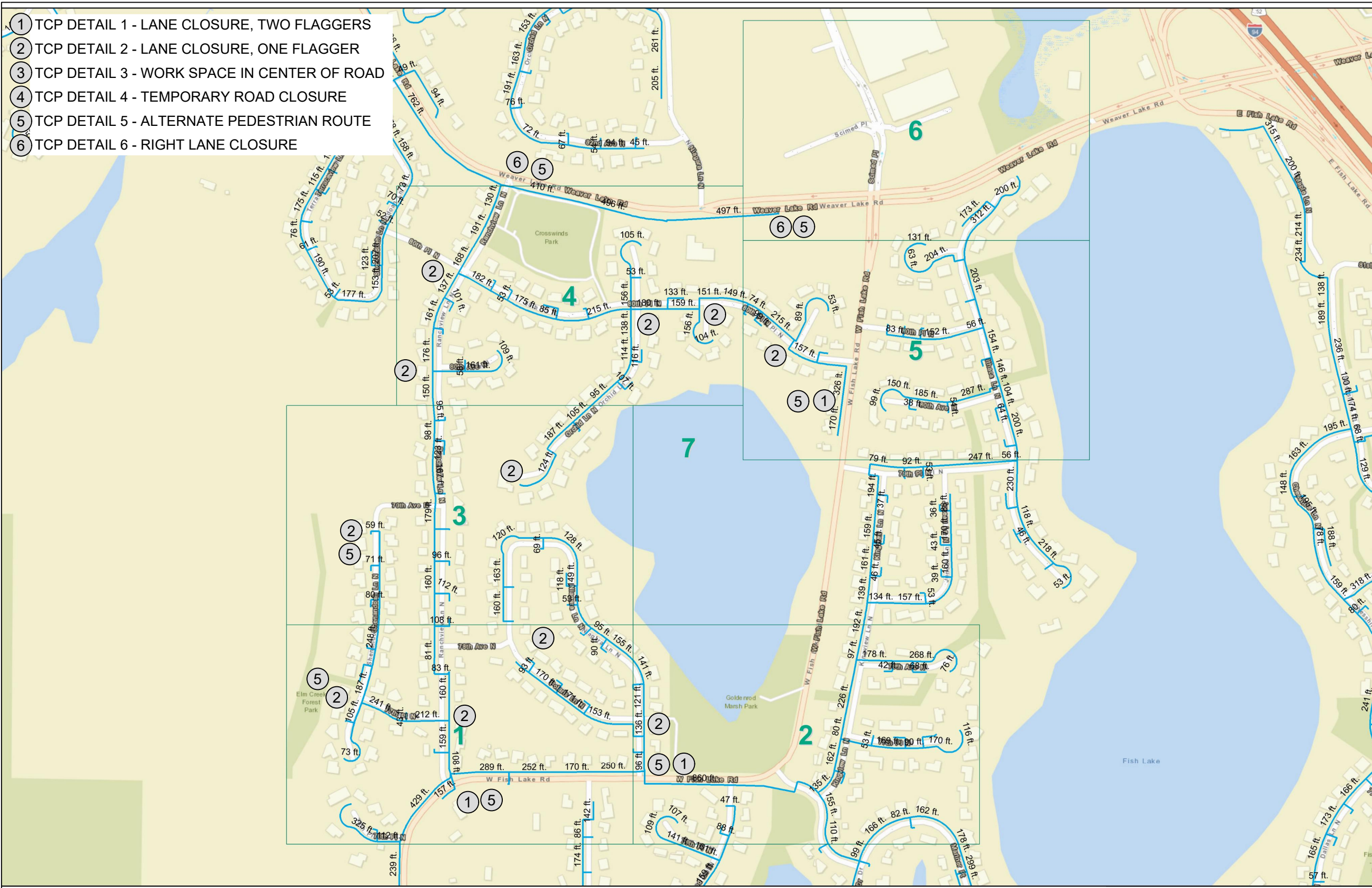


DETAILS

- ① TCP DETAIL 1 - LANE CLOSURE, TWO FLAGGERS
- ② TCP DETAIL 2 - LANE CLOSURE, ONE FLAGGER
- ③ TCP DETAIL 3 - WORK SPACE IN CENTER OF ROAD
- ④ TCP DETAIL 4 - TEMPORARY ROAD CLOSURE
- ⑤ TCP DETAIL 5 - ALTERNATE PEDESTRIAN ROUTE
- ⑥ TCP DETAIL 6 - RIGHT LANE CLOSURE



FIBERHOOD:
MPGV-MN-1-1

ENGINEER:



hbk
UTILITY
INFRASTRUCTURE
SOLUTIONS
ENGINEERING

A QUANTA SERVICES COMPANY

921 WEST VAN BUREN, SUITE 100
CHICAGO, IL 60607
PHONE: 312.453.0076 FAX: 312.452.8231
STATE OF ILLINOIS, DEPARTMENT OF PROFESSIONAL
REGULATION, LICENSE NO. 184-002308

OWNER/DEVELOPER:



gatewayfiber

275 WEST SERVICE RD
SUITE O
WRIGHT CITY, MO 63390

TITLE:

**PROPOSED FIBER - OPTIC
INSTALLATION
80TH PL N & RANCHVIEW LN N
MAPLE GROVE, MN**

REVISIONS

REV	DATE	DESCRIPTION	BY
00	3/28/24	FOR REVIEW	WZS
01	5/14/24	FOR REVIEW	WZS
02	05/29/24	FOR REVIEW	TNR
03			
04			
05			
06			
07			
08			
09			
10			
11			

DRAWN BY:	CHECKED BY:	APPROVED BY:
WZS	AJR	NFJ

PROJECT NUMBER: 24-0177
DATE DRAWN: 3/28/24

SHEET:
TC1

TCP DETAIL 1

TCP DETAIL 2

Field Manual January 2018

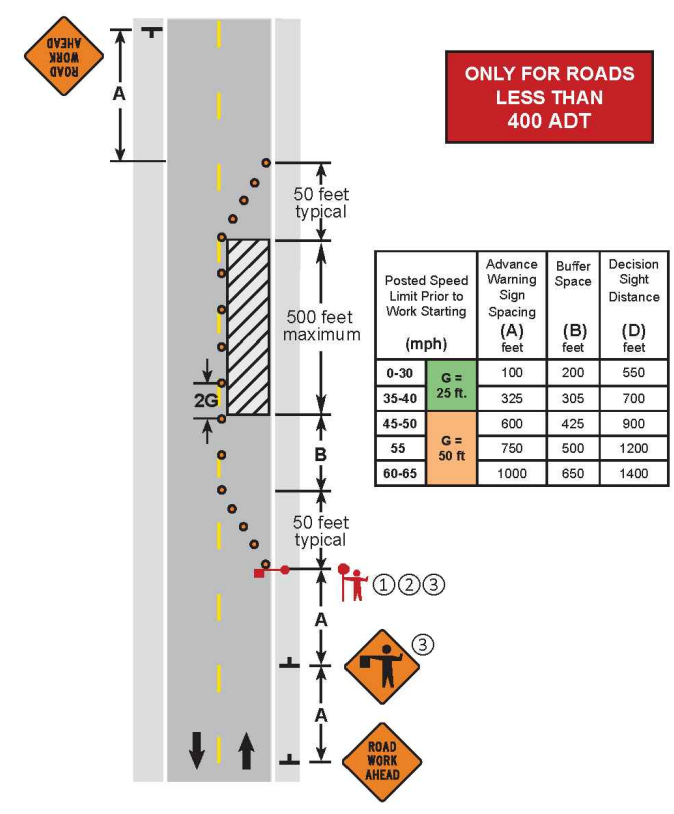
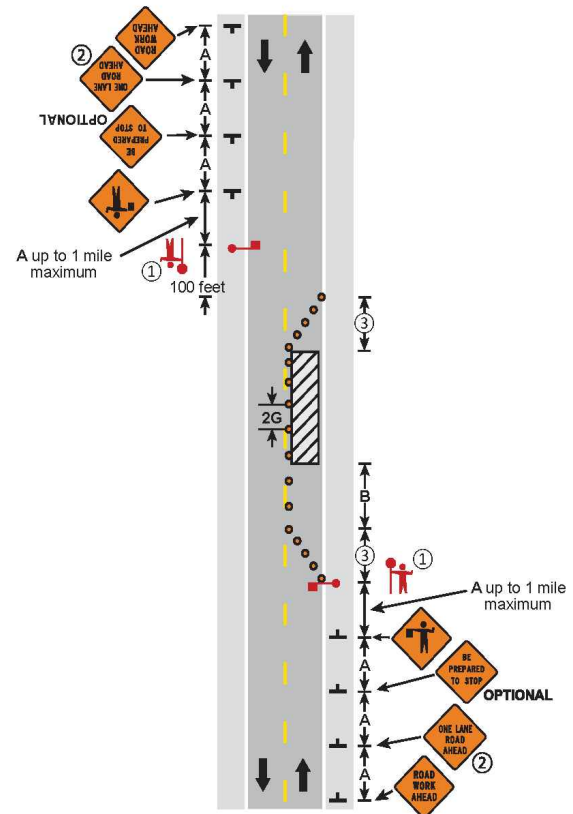
Field Manual January 2018

NOTES:

NOTES:

- ① The approach sight distance to the flagger shall be at least the Decision Sight Distance (D).
- ② The ONE LANE ROAD AHEAD sign may be omitted when the posted speed limit is 40 mph or less.
- ③ The two-way taper should be 50 feet in length using 5 equally spaced channelizing devices.
4. If anticipating operational problems, the use of a Pilot Car (see [Layout 18](#)) may improve operations and safety.

- ① The approach sight distance to the flagger shall be at least the Decision Sight Distance (D).
- ② If the flagger's ability to see oncoming motorists beyond the work space is less than the Decision Sight Distance (D), two flaggers shall be used - See [Layout 16](#).
- ③ The Flagger and Flagger Ahead sign may be omitted if the operation is during daylight hours, 12 hours or less, and traffic is able to self-regulate.
4. If the work space must be left unattended at night use [Layout 14](#).



LANE CLOSURE, TWO FLAGGERS
TWO-LANE, TWO-WAY ROAD
3 DAYS or LESS
6K-16
LAYOUT 16

LANE CLOSURE, ONE FLAGGER
TWO-LANE, TWO-WAY ROAD
3 DAYS or LESS
6K-4
LAYOUT 4

FIBERHOOD:
MPGV-MN-1-1

ENGINEER:
hbk
UTILITY INFRASTRUCTURE SOLUTIONS
A QUANTA SERVICES COMPANY
921 WEST VAN BUREN, SUITE 100
CHICAGO, IL 60607
PHONE: (312) 452-8976 FAX: (312) 452-8231
STATE OF ILLINOIS, DEPARTMENT OF PROFESSIONAL REGULATION, LICENSE NO. 184-002388

OWNER/DEVELOPER:
gatewayfiber
275 WEST SERVICE RD
SUITE 0
WRIGHT CITY, MO 63390

TITLE:
PROPOSED FIBER - OPTIC
INSTALLATION
80TH PL N & RANCHVIEW LN N
MAPLE GROVE, MN

REVISIONS		
REV	DATE	DESCRIPTION
00	3/28/24	FOR REVIEW
01	5/14/24	FOR REVIEW
02	05/29/24	FOR REVIEW
03		
04		
05		
06		
07		
08		
09		
10		
11		

DRAWN BY:	CHECKED BY:	APPROVED BY:
WZS	AJR	NFJ

PROJECT NUMBER: 24-0177
DATE DRAWN: 3/28/24

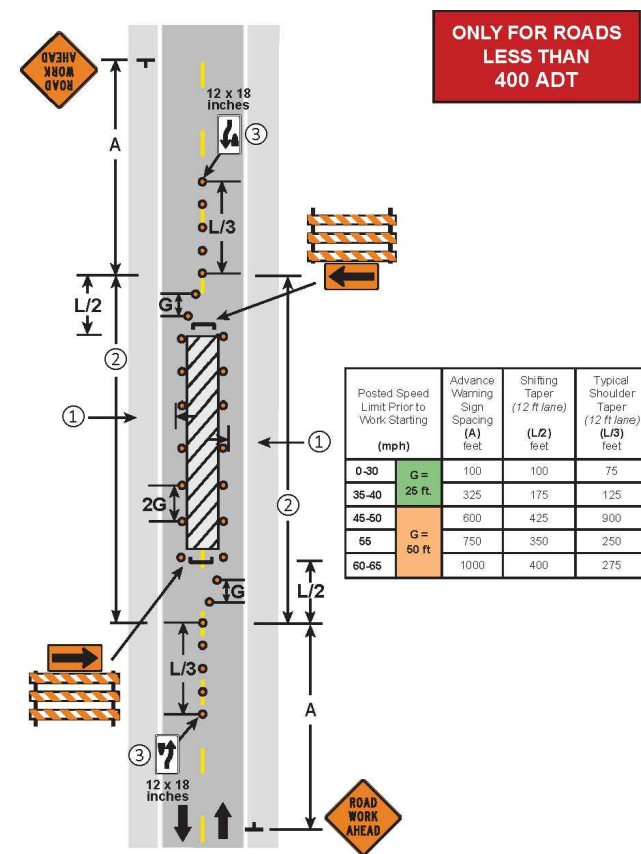
SHEET: TC2

TCP DETAIL 3

Field Manual January 2018

NOTES:

- ① Minimum drivable surface outside of the channelizing devices shall be 10 feet.
- ② Parking and stopping should be prohibited along the work area and tapers.
- ③ Keep Right sign may be omitted if posted speed limit is 40 mph or less.



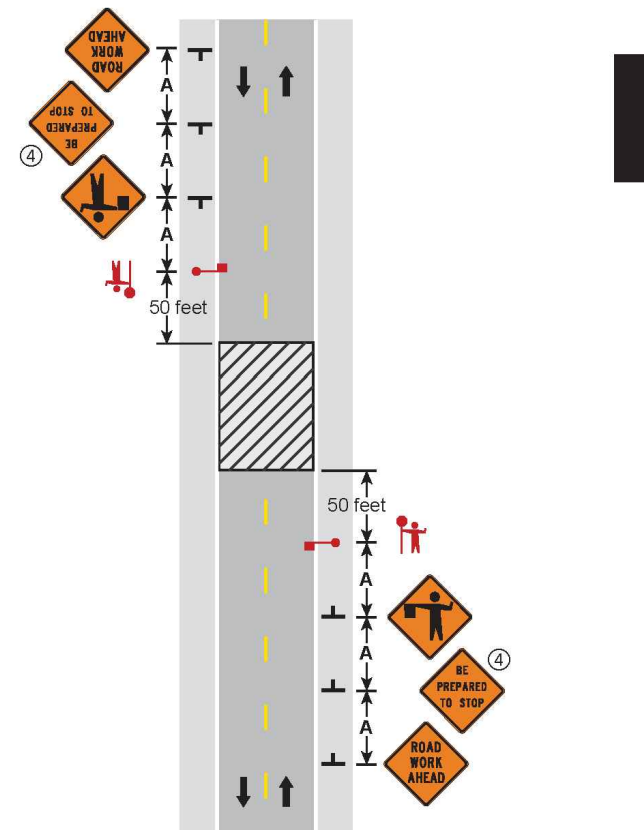
WORK SPACE IN CENTER OF ROAD
TWO-LANE, TWO-WAY ROAD
3 DAYS or LESS
6K-2
LAYOUT 2

TCP DETAIL 4

Field Manual January 2018

NOTES:

- 1. Road authority shall be contacted prior to closure.
- 2. If the volume is less than 400 ADT, traffic control devices may be substituted with law enforcement.
- 3. Traffic should not be stopped for intervals of greater than 15 minutes.
- ④ The BE PREPARED TO STOP sign may be omitted when the posted speed limit is 40 mph or less.



TEMPORARY ROAD CLOSURE
TWO-LANE, TWO-WAY ROAD
12 HOURS or LESS
6K-31
LAYOUT 31

FIBERHOOD:
MPGV-MN-1-1

ENGINEER:
UTILITY INFRASTRUCTURE SOLUTIONS hbk ENGINEERING
A QUANTA SERVICES COMPANY
921 WEST VAN BUREN, SUITE 100
CHICAGO, IL 60607
PHONE: (312) 452-8976 FAX: (312) 452-8231
STATE OF ILLINOIS, DEPARTMENT OF PROFESSIONAL REGULATION, LICENSE NO. 184-002388

OWNER/DEVELOPER:
gatewayfiber
275 WEST SERVICE RD
SUITE 0
WRIGHT CITY, MO 63390

TITLE:
PROPOSED FIBER - OPTIC INSTALLATION
80TH PL N & RANCHVIEW LN N
MAPLE GROVE, MN

REVISIONS		
REV	DATE	DESCRIPTION
00	3/28/24	FOR REVIEW
01	5/14/24	FOR REVIEW
02	05/29/24	FOR REVIEW
03		
04		
05		
06		
07		
08		
09		
10		
11		

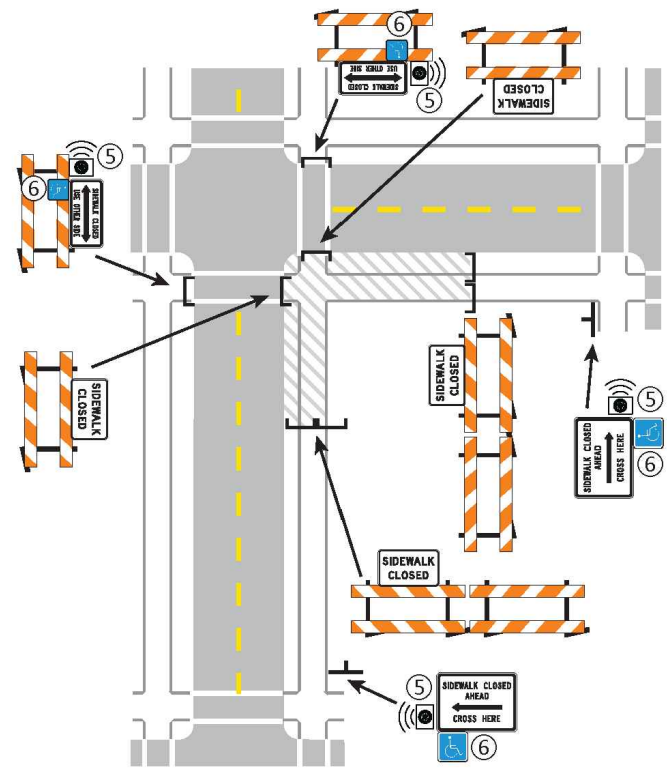
DRAWN BY:	CHECKED BY:	APPROVED BY:
WZS	AJR	NFJ

PROJECT NUMBER: 24-0177
DATE DRAWN: 3/28/24

SHEET: **TC3**

TCP DETAIL 5

Field Manual January 2018



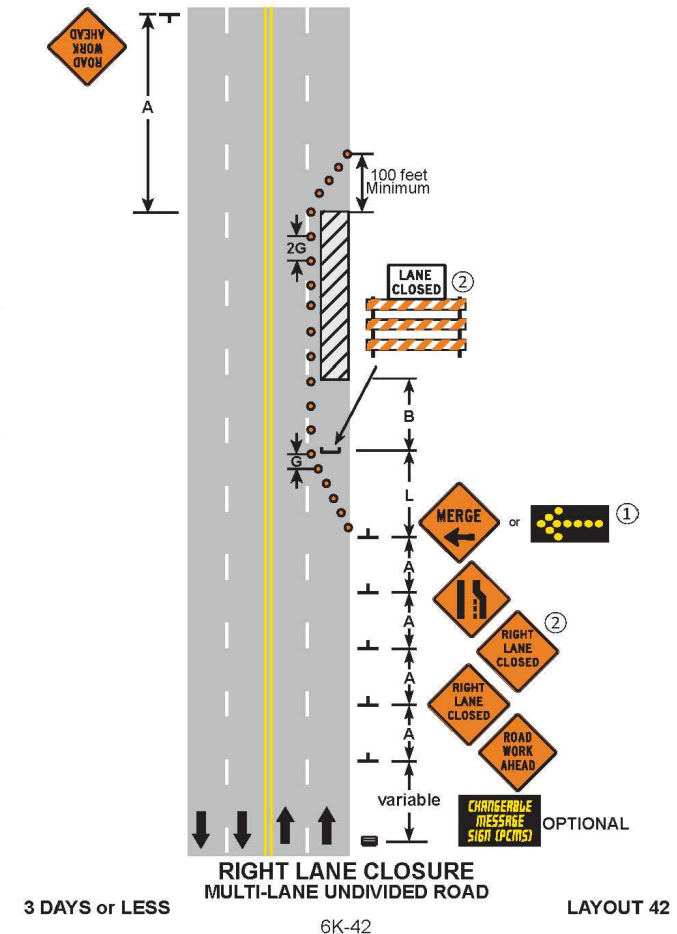
ALTERNATE PEDESTRIAN ROUTE
CROSSWALK CLOSURES AND PEDESTRIAN DETOURS
3 DAYS or LESS LAYOUT 88b LAYOUT 88a & b
6K-88b

TCP DETAIL 6

Field Manual January 2018

NOTES:

- ① The Flashing Arrow Board shall be used where the posted speed limit is 45 mph or greater, and shall be placed on the shoulder. If there is no shoulder, or the shoulder is too narrow, place at the end of the taper in lieu of the Type III barricade assembly.
- ② The RIGHT LANE CLOSED sign and/or LANE CLOSED sign may be omitted when the posted speed limit is 40 mph or less.
3. If there is a shoulder, close the shoulder using a shoulder taper.



3 DAYS or LESS RIGHT LANE CLOSURE MULTI-LANE UNDIVIDED ROAD LAYOUT 42
6K-42

FIBERHOOD:
MPGV-MN-1-1

ENGINEER:
hbk
UTILITY INFRASTRUCTURE SOLUTIONS
A QUANTA SERVICES COMPANY
921 WEST VAN BUREN, SUITE 100
CHICAGO, IL 60607
PHONE: 312.452.0076 FAX: 312.452.4231
STATE OF ILLINOIS, DEPARTMENT OF PROFESSIONAL REGULATION, LICENSE NO. 184-002308

OWNER/DEVELOPER:
gatewayfiber
275 WEST SERVICE RD
SUITE O
WRIGHT CITY, MO 63390

TITLE:
PROPOSED FIBER - OPTIC
INSTALLATION
80TH PL N & RANCHVIEW LN N
MAPLE GROVE, MN

REVISIONS		
REV	DATE	DESCRIPTION
00	3/28/24	FOR REVIEW
01	5/14/24	FOR REVIEW
02	05/29/24	FOR REVIEW
03		
04		
05		
06		
07		
08		
09		
10		
11		

DRAWN BY:	CHECKED BY:	APPROVED BY:
WZS	AJR	NFJ

PROJECT NUMBER: 24-0177
DATE DRAWN: 3/28/24

SHEET:
TC4