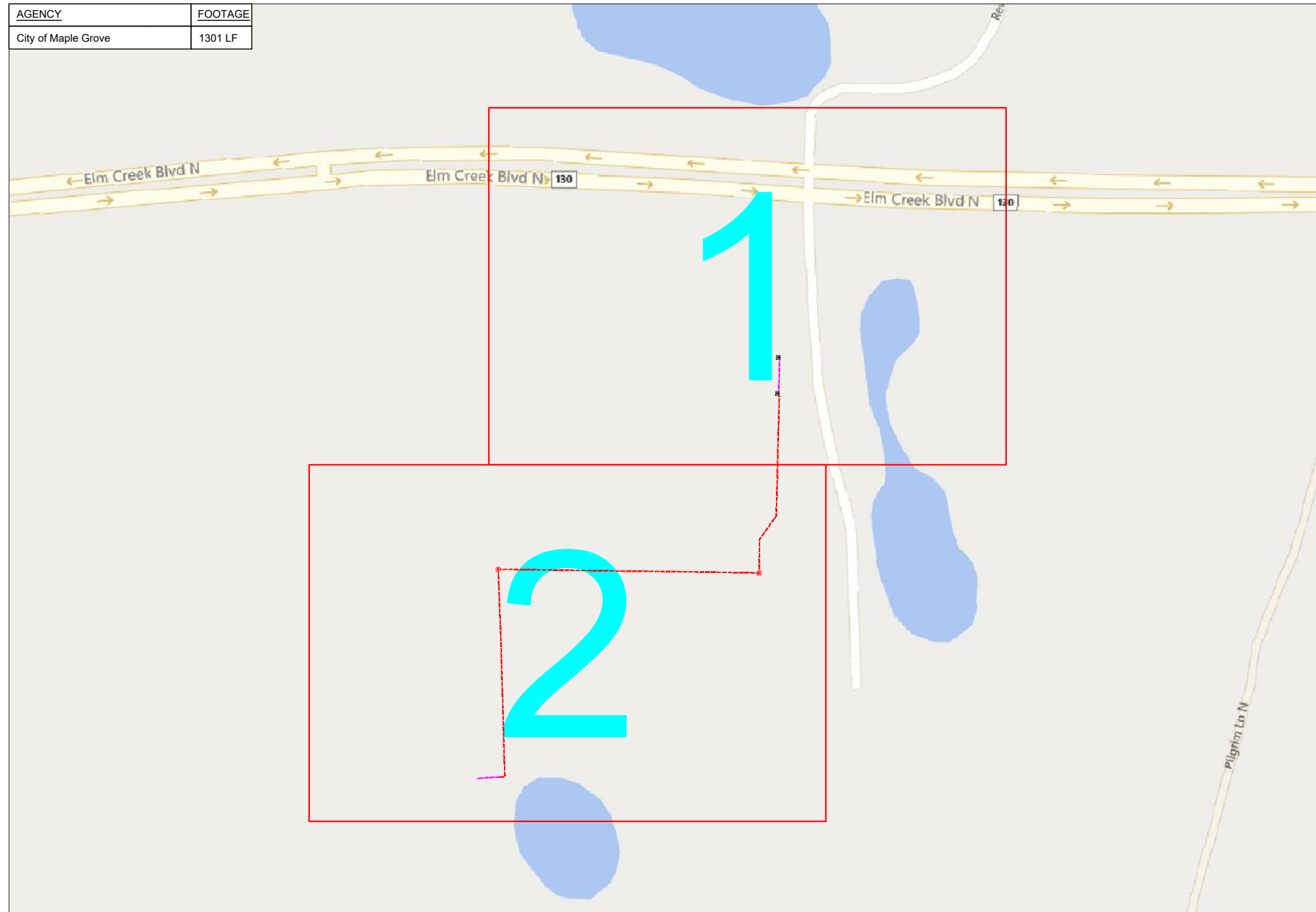


# 116938 Nextern Innovations



AGENCY	FOOTAGE
City of Maple Grove	1301 LF

10601 Fountains Dr. N. Maple Grove, MN. 55369



1" = -

Route	Nextern Innovations
City	Maple Grove, MN
County	Hennepin
Filename	Nextern Innovations
Work Order #	116938



160 2nd St SW  
Perham, MN 56573  
(218) 346-5500

### TRACKING

Staked By:	HF	3-28-24
Drafted By:	TJR	4-5-24
Project Manager	Matt Gunnarson	763-270-6177
As-Built By:	-	-
Revision	-	-

### Construction Totals

Route Footage	1913'
Total Underground	1913'
Total Aerial	0'
Underground (New)	1757'
Aerial (New)	0'
Overpull (Ex Duct)	156'
Overlash (Ex Strand)	0'
Plow	0'
Bore	1757'
New Vaults	2
New Peds	0

### GSOC

GOPHER STATE ONE CALL  
1-800-252-1116  
www.gopherstateonecall.org

Prepared by:



OVERVIEW

# Legend

## Fiber Linetypes

	Proposed Underground Fiber - Bore
	Proposed Underground Fiber - Plow
	Proposed UG Fiber in Existing Duct
	Existing Underground Fiber
	Proposed Aerial Fiber
	Proposed Aerial Overlash
	Existing Aerial Fiber
	Proposed Aerial Strand
	Existing Aerial Strand

## Other Linetypes

	Whiteline
	Rail Road
	Fence
	Retaining Wall
	Storm Sewer
	Sanitary Sewer
	Gas Line
	Tele./Comm. Line
	Water Line
	Electric Line
	Street light/Traffic signal
	District Cooling
	District Heating
	Force Main
	Other Utility or Unknown
	Utility Easement

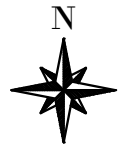
## Abbreviations

- ABD - Abandoned Utility
- CL - Center Line
- WL - White Line
- R/W - Right of Way
- BOC - Back of Curb
- FC - Front of Curb
- EOR - Edge of Road
- S/W - Sidewalk
- HH - Handhole
- MH - Manhole
- PRT - Preterminated Cable
- PRG - Pigtail Cable

## Symbols

	Proposed Handhole
	Existing Handhole
	Reference Handhole
	Manhole
	Proposed Cabinet
	Existing Cabinet
	Bore Pit
	Proposed Splice Point
	Existing Splice Point
	Power Pole
	Proposed Slack Coil
	Existing Slack Coil
	Proposed Anchor/Down Guy
	Existing Anchor/Down Guy
	Proposed Riser
	Existing Riser
	Aerial Bond
	Aerial Ground
	BM53T - Fiber Marker
	BM53 - Fiber Marker
	Proposed PED
	Existing PED
	Proposed Splice Case
	Existing Splice Case
	Street Light
	Traffic Light
	Traffic Light
	Transformer
	Hydrant
	Catch Basin
	Tree
	1A AMW - Main Enclosure - J-Box Needed
	2A AMW - Main Enclosure - No J-Box Needed
	3A AMW - Stack Enclosure

Materials	
48 Fiber	2338
1 X 1.25" Duct	566
2 X 1.25" Duct	1191
Vault (24x30)	2
Ground Rod - 8'	2



1" = -

Route	Nextern Innovations
City	Maple Grove, MN
County	Hennepin
Filename	Nextern Innovations
Work Order #	116938

160 2nd St SW  
Perham, MN 56573  
(218) 346-5500

TRACKING	
Staked By:	HF 3-28-24
Drafted By:	TJR 4-5-24
Project Manager	Matt Gunnarson 763-270-6177
As-Built By:	-
Revision	-

Construction Totals	
Route Footage	1913'
Total Underground	1913'
Total Aerial	0'
Underground (New)	1757'
Aerial (New)	0'
Overpull (Ex Duct)	156'
Overlash (Ex Strand)	0'
Plow	0'
Bore	1757'
New Vaults	2
New Peds	0

**GSOC**  
GOPHER STATE ONE CALL  
1-800-252-1116  
www.gopherstateonecall.org

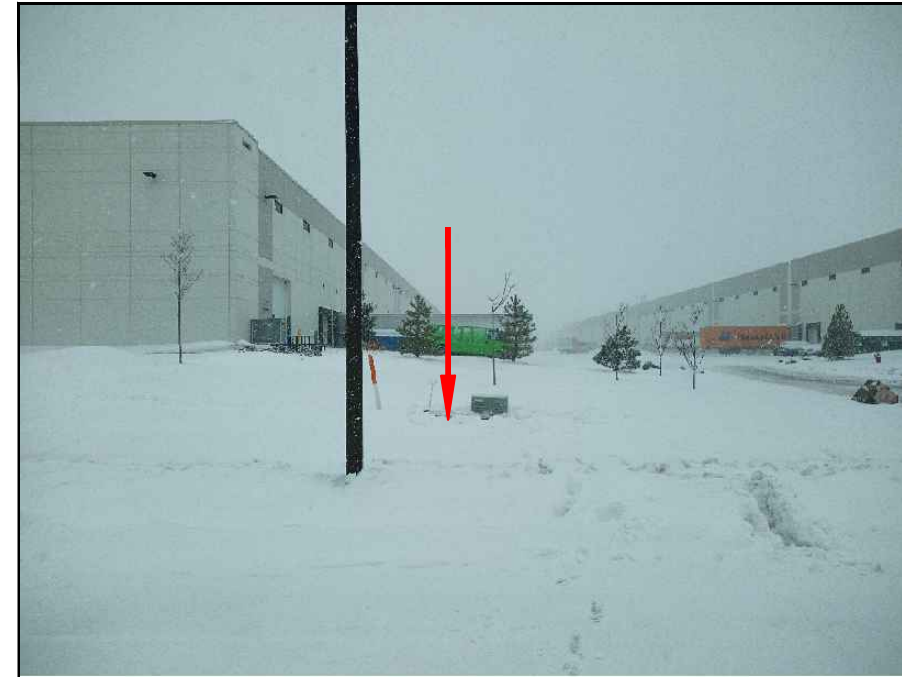
Prepared by:  
 compass consultants inc.  
Perham, MN 218-346-3600  
TrustCompass.com

LEGEND

Existing Access Points



68217-02



72948A-01



68217-02



72948A-01



1" = -

Route	Nextern Innovations
City	Maple Grove, MN
County	Hennepin
Filename	Nextern Innovations
Work Order #	116938

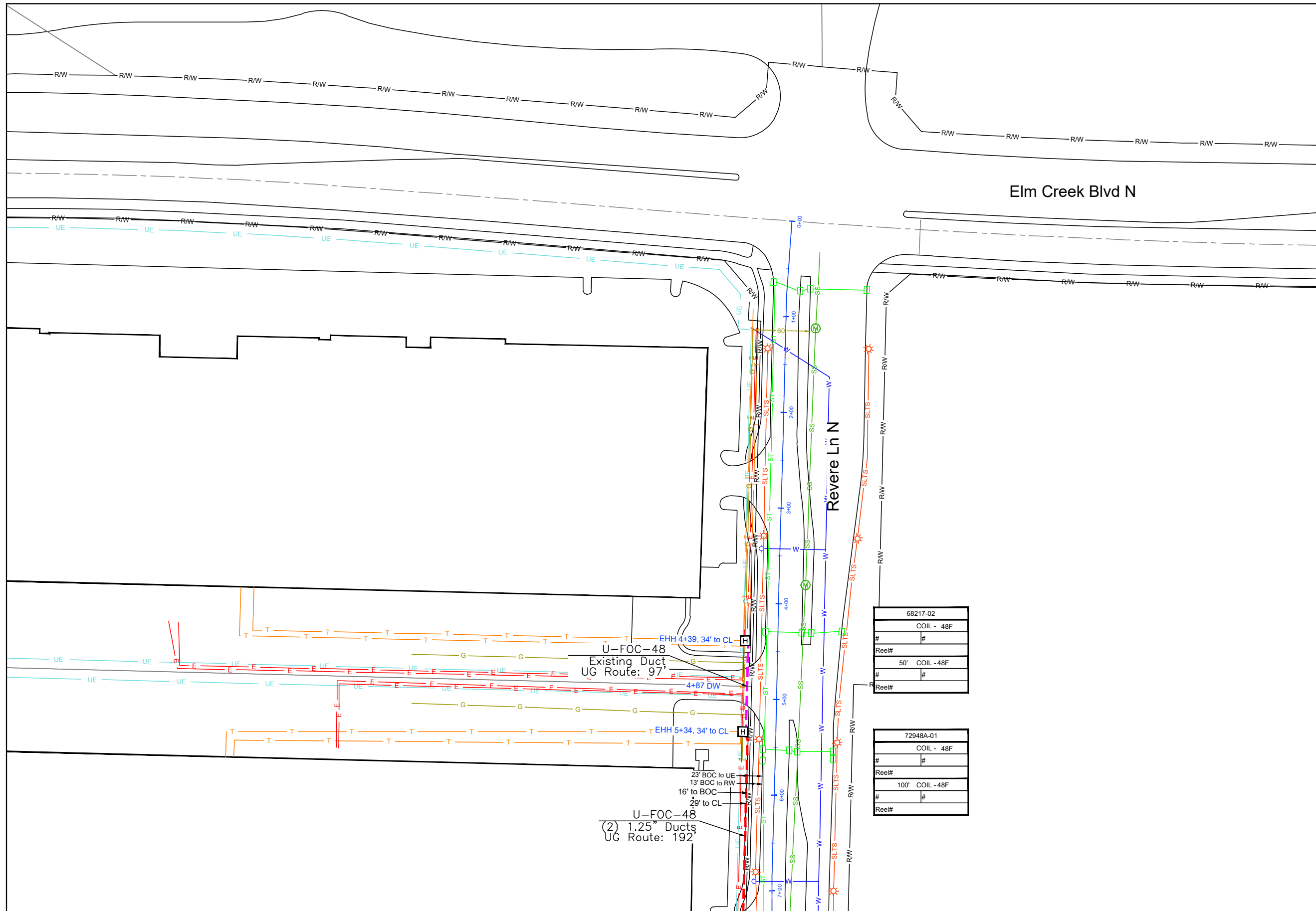
**arvig**  
 160 2nd St SW  
 Perham, MN 56573  
 (218) 346-5500

TRACKING	
Staked By:	HF 3-28-24
Drafted By:	TJR 4-5-24
Project Manager	Matt Gunnarson 763-270-6177
As-Built By:	-
Revision	-

**GSOC**  
 GOPHER STATE ONE CALL  
 1-800-252-1116  
 www.gopherstateonecall.org

Prepared by:  
  
 Perham, MN 218-346-3600  
 TrustCompass.com

EXISTING AP



See Sheet 116938-02



1" = 100'

Route  
Nextern Innovations  
City  
Maple Grove, MN  
County  
Hennepin  
Filename  
Nextern Innovations  
Work Order #  
116938

**arvig**  
160 2nd St SW  
Perham, MN 56573  
(218) 346-5500

**TRACKING**

Staked By:  
HF 3-28-24  
Drafted By:  
TJR 4-5-24  
Project Manager  
Matt Gunnarson 763-270-6177  
As-Built By:  
- -  
Revision  
- -

68217-02
COIL - 48F
# #
Reel#
50' COIL - 48F
# #
Reel#

72948A-01
COIL - 48F
# #
Reel#
100' COIL - 48F
# #
Reel#

U-FOC-48  
Existing Duct  
UG Route: 97

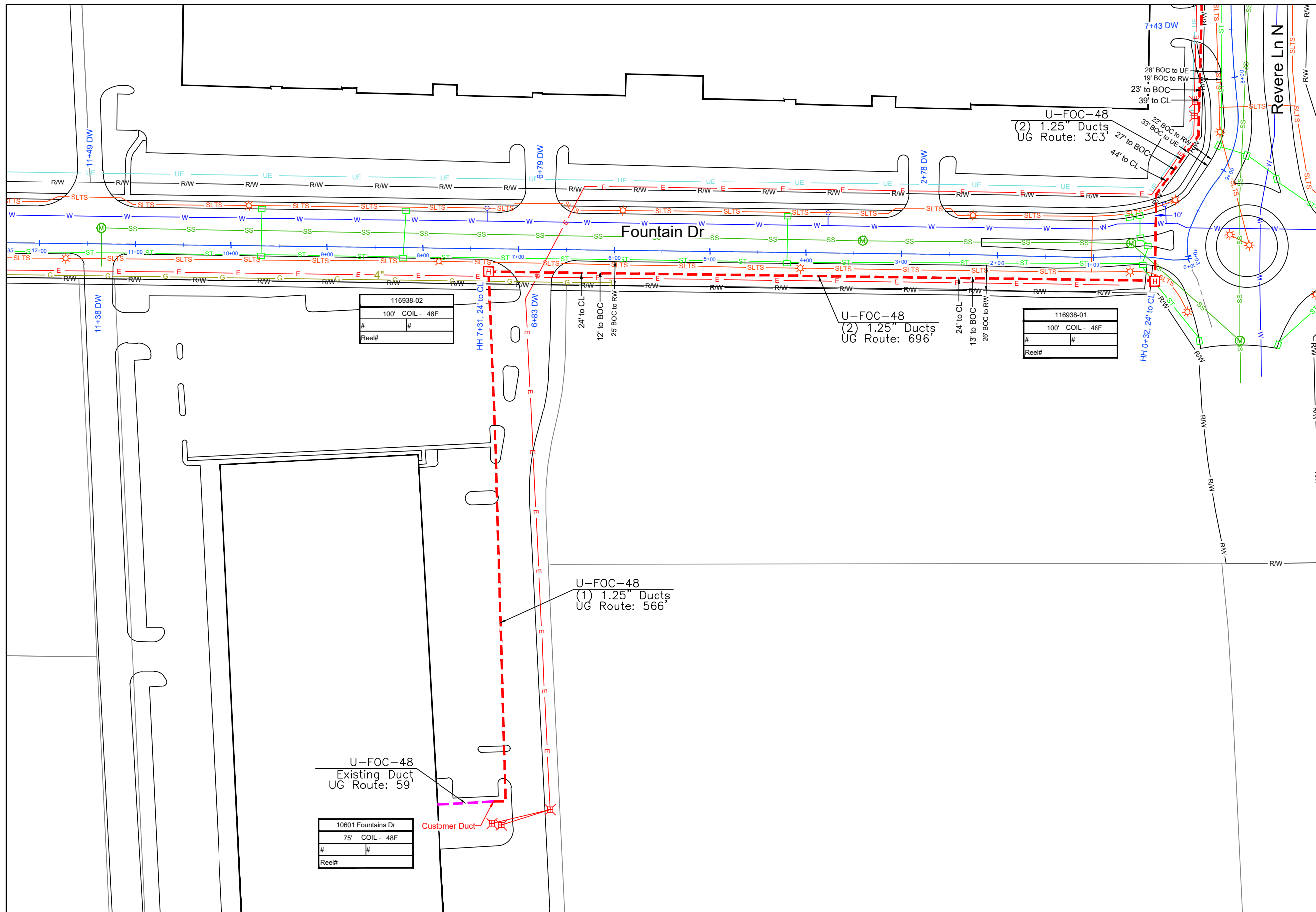
U-FOC-48  
(2) 1.25" Ducts  
UG Route: 192

**GSOC**  
GOPHER STATE ONE CALL  
1-800-252-1116  
www.gopherstateonecall.org

Prepared by:  
 **compass**  
consultants inc.  
Perham, MN 218-346-3600  
TrustCompass.com

116938-01

See Sheet 116938-01



116938-02	
100'	COIL - 48F
#	#
Reel#	

116938-01	
100'	COIL - 48F
#	#
Reel#	

10601 Fountains Dr	
75'	COIL - 48F
#	#
Reel#	



Route  
Nextern Innovations  
City  
Maple Grove, MN  
County  
Hennepin  
Filename  
Nextern Innovations  
Work Order #  
116938

**arvig**

160 2nd St SW  
Perham, MN 56573  
(218) 346-5500

TRACKING	
Staked By:	HF 3-28-24
Drafted By:	TJR 4-5-24
Project Manager	Matt Gunnarson 763-270-6177
As-Built By:	-
Revision	-

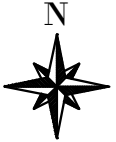
**GSOC**  
GOPHER STATE ONE CALL  
1-800-252-1116  
www.gopherstateonecall.org

Prepared by:  
**compass**  
consultants inc.  
Perham, MN 218-346-3600  
TrustCompass.com

116938-02

----

Date	From Vault	To Vault	Cable/Duct	Reel Number	Start #	End #	Total	Notes:
Vault Size	Vault #	Ground Rod	Vault Size	Vault #	Ground Rod	Vault Size	Vault #	Ground Rod
	Vault			Vault			Vault	
	Vault			Vault			Vault	
	Vault			Vault			Vault	
	Vault			Vault			Vault	
Locate Post								
Fiber Marker								
Tracer Wire								



1" =

Route

Nextern Innovations

City

Maple Grove, MN

County

Hennepin

Filename

Nextern Innovations

Work Order #

116938



160 2nd St SW  
Perham, MN 56573  
(218) 346-5500

**TRACKING**

Staked By:

HF 3-28-24

Drafted By:

TJR 4-5-24

Project Manager

Matt Gunnarson 763-270-6177

As-Built By:

- -

Revision

- - -

**GSOC**

GOPHER STATE ONE CALL  
1-800-252-1116  
www.gopherstateonecall.org

Prepared by:



Perham, MN 218-346-3600  
TrustCompass.com

Tally Sheet

**FOR CONSTRUCTION USE ONLY**