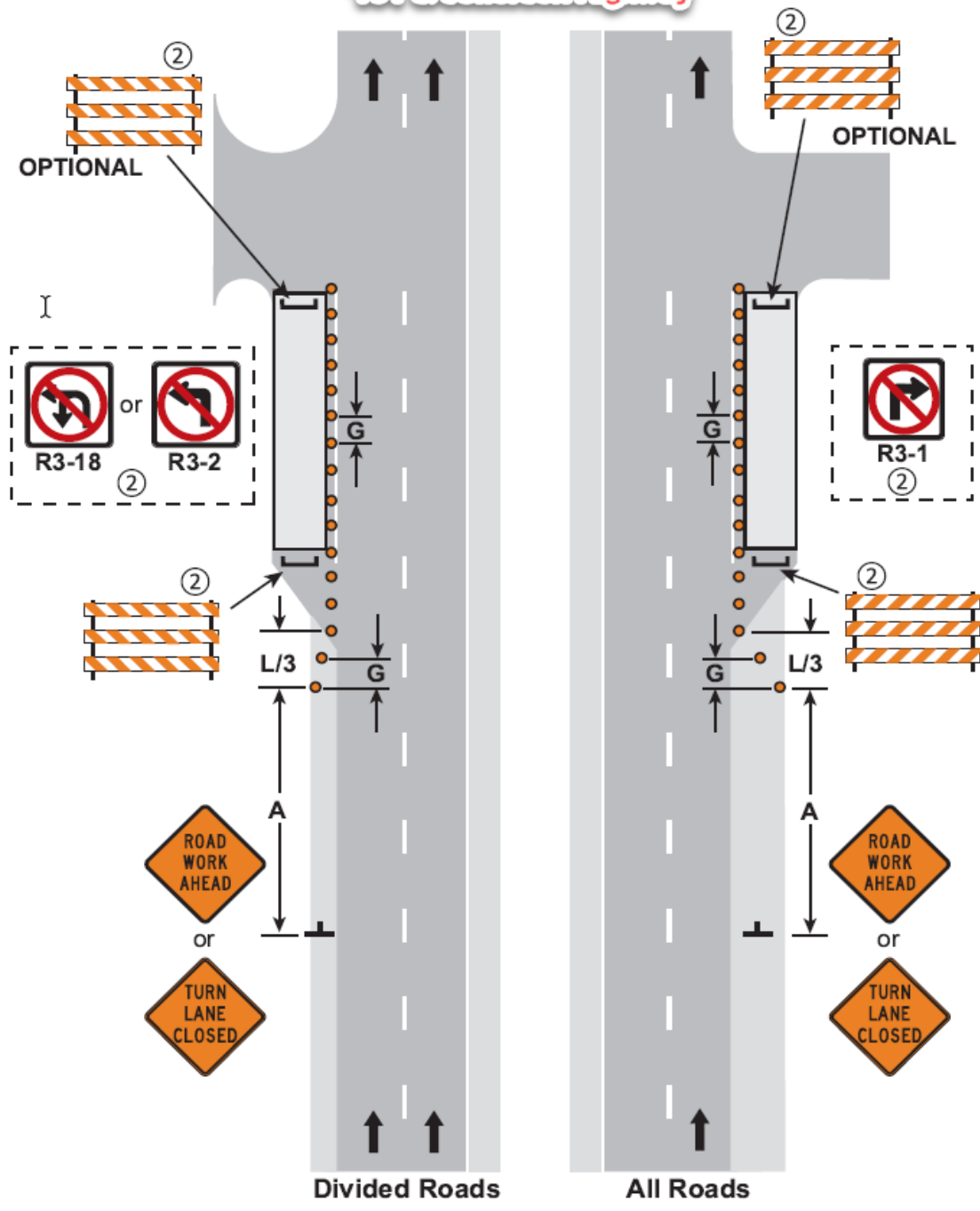


NOTES:

- 1. Contact the appropriate road authority for signal timing modifications before beginning work at any signalized intersection.
- ② Optional R3-1, R3-2, or R3-18 signs may be placed on sign stand or top of barricades on side closest to traffic. Signs are required if turns are prohibited.

**Partial Turn Lane Closure
101 & Jefferson Highway**



TURN LANE CLOSURES

3 DAYS or LESS

LAYOUT 33