

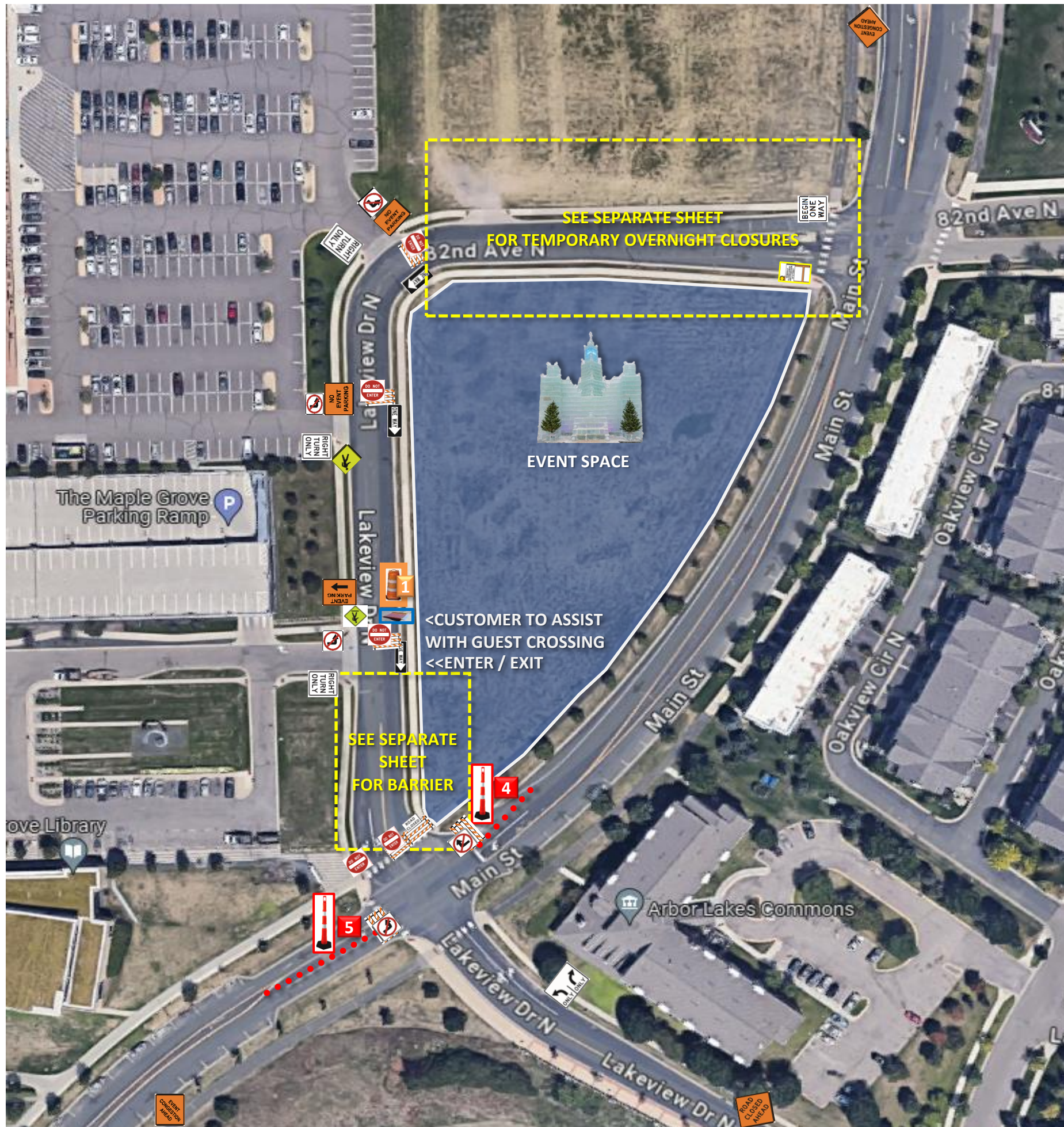


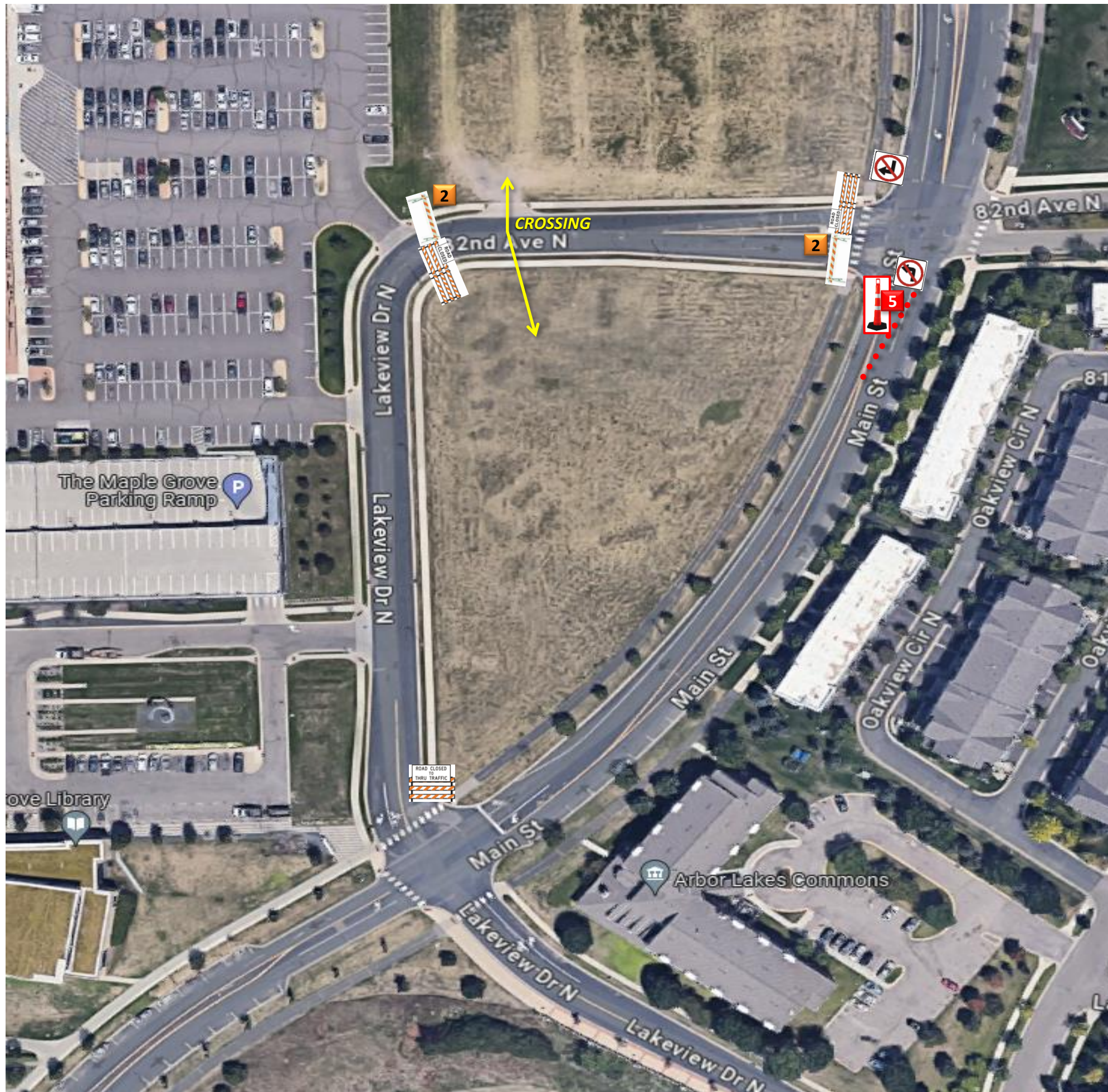
Ice Castles 2023-2024
December-February

- Friday PM 12/8/2023: WL to deliver and setup barrier in place (see separate sheet)
 - Using barrier to protect setup on roadway
- Tuesday 1/16: WL to deliver closure for temporary overnight setups (see separate sheet)
 - Customer to setup / takedown for snow transport
- Wednesday PM 1/24: WL to deliver and setup one-way traffic control as shown
 - WL to pick up temporary closure upon setup of main event
 - Customer to setup / takedown as needed throughout event
 - Possible use through early March
 - Customer to contact when job complete

TOTAL EQUIPMENT LIST (INCLUDING THIS SHEET)

- 12- Type III Barricades
- 3- Road Closed
- 1- Road Closed to Thru Traffic
- 1- Road Closed Ahead
- 2- Event Congestion Ahead
- 5- NO Left Turn
- 2- NO Right Turn
- 5- Do Not Enter
- 1- (Lane Designation) / strut
- 3- Right Turn Only / strut
- 1- Begin One Way / strut
- 3- One Way Right / strut
- 2- NO Event Parking / strut
- 1- Event Parking Right / strut
- 1- Pedestrian Crossing Ahead / strut
- 1- Pedestrian Crossing / strut
- 1- Type I / Sidewalk Closed Ahead
- 2- Type II / Sidewalk Closed
- 4- Parade Boards
- 2- Drums
- 14- Portable Delineators
- 1- ADA Ramp
- 5- Concrete Jersey Barrier (10ft)





Ice Castles 2023-2024
Temporary Overnight Closures

- WL to deliver in place as shown
- Customer to setup / takedown as needed
- Using to secure roadway for snow transport
- WL to pick up prior to main event

- Equipment List (this sheet only)**
- 5- Type III Barricades
 - 2- Road Closed
 - 1- Road Closed to Thru Traffic
 - 1- NO Left Turn / strut
 - 1- NO Right Turn / strut
 - 4- Parade Boards
 - 5- Portable Delineators






Equipment List (this sheet only)

- 1- Type I / SWC Use Other Side
- 2- Type II / Sidewalk Closed
- 1- Drum
- 5- Concrete Jersey Barrier (10ft)



Ice Castles 2023-2024
Heavy Equipment



5- CONCRETE JERSEY BARRIER (10ft)

Friday PM 12/8/2023: WL to deliver and setup as shown

- On site customer contact: Jake Telschow 507-330-3003
- Using barrier to protect setup on roadway
- See main overview sheet for full traffic control setup
- Possible use through early March
- Customer to contact when job complete

