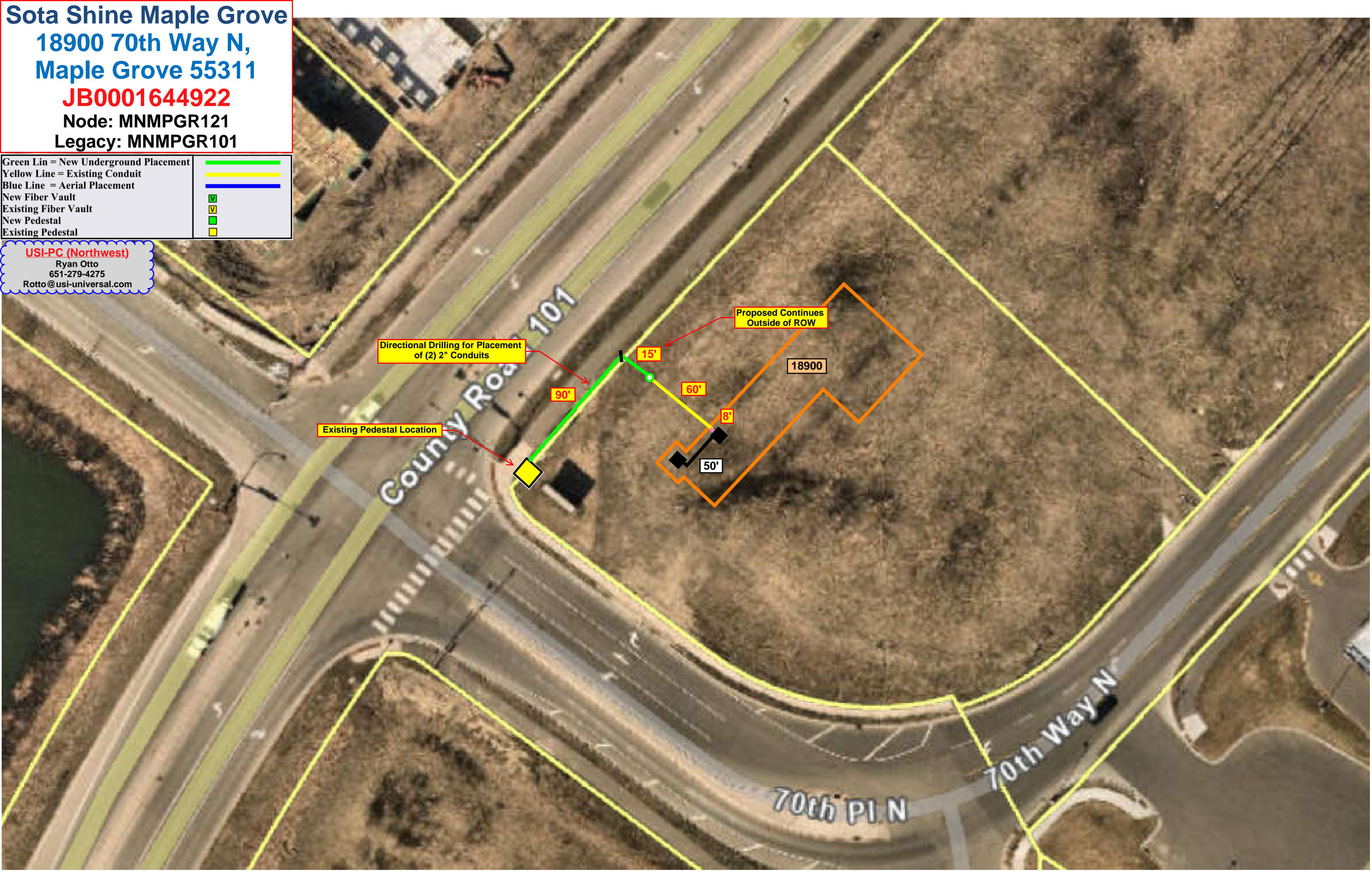


Sota Shine Maple Grove
18900 70th Way N,
Maple Grove 55311
JB0001644922
Node: MNMPGR121
Legacy: MNMPGR101

Green Lin = New Underground Placement	
Yellow Line = Existing Conduit	
Blue Line = Aerial Placement	
New Fiber Vault	
Existing Fiber Vault	
New Pedestal	
Existing Pedestal	

USI-PC (Northwest)
 Ryan Otto
 651-279-4275
 Rotto@usi-universal.com



Directional Drilling for Placement of (2) 2" Conduits

Existing Pedestal Location

Proposed Continues Outside of ROW

90'

15'

60'

8'

50'




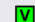



18900

County Road 101

70th Pl N

70th Way N

Sota Shine Maple Grove
18900 70th Way N,
Maple Grove 55311
JB0001644922
Node: MNMPGR121
Legacy: MNMPGR101

Green Lin = New Underground Placement	
Yellow Line = Existing Conduit	
Blue Line = Aerial Placement	
New Fiber Vault	
Existing Fiber Vault	
New Pedestal	
Existing Pedestal	

USI-PC (Northwest)
 Ryan Otto
 651-279-4275
 Rotto@usi-universal.com

Directional Drilling for Placement of (2) 2" Conduits

Existing Pedestal Location

Proposed Continues Outside of ROW

NODE:	MNMGH00600	
HUB:	TOTAL HHP	
MILEAGE:		
DATE MANUFACTURED & WORK:		
MAKE:		
MODEL:	OM6000	
RP LEVEL:		
REV INPUT:	8.0	
E-B INT CABLE:		
F-D INT CABLE:		
E ITU	ITU	HOMES PASSED
A		
B		
C		
D		
PS1 PORT:	A	
PS2 PORT:	F	
SHUNT STATE:		
PS1:	MPGR101DP001	
PS2:		
NODE AMPS	NODE VOLTS	
	76.9	

