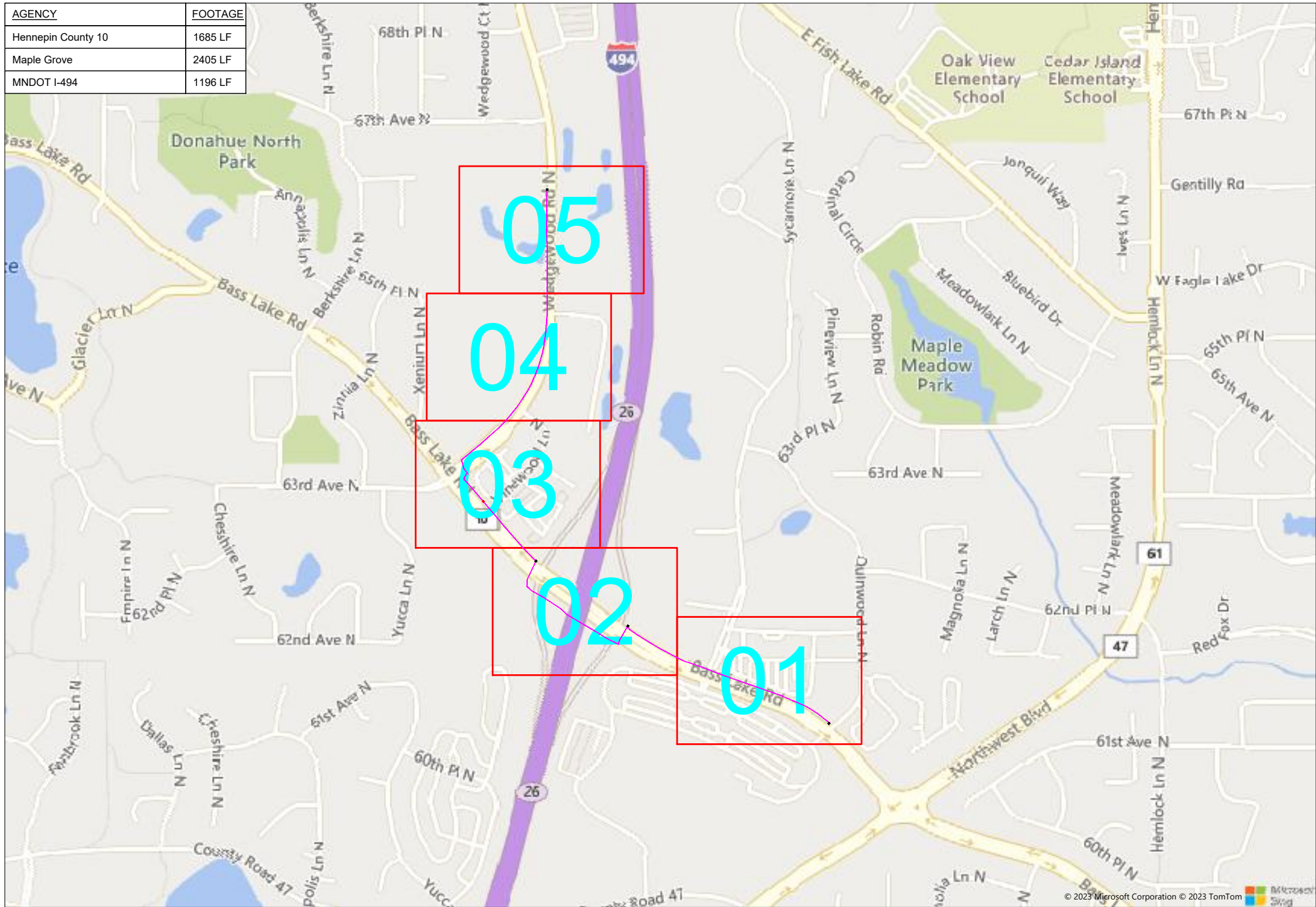
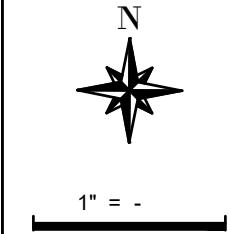


# 109359C Boston Scientific Fiber Replacement

AGENCY	FOOTAGE
Hennepin County 10	1685 LF
Maple Grove	2405 LF
MNDOT I-494	1196 LF



Maple Grove, MN 55311



Route	Boston Scientific Fiber Replacement
City	Maple Grove, MN
County	Hennepin
Filename	Boston Scientific Fiber Replacement
Work Order #	109359C

**arvig**  
 160 2nd St SW  
 Perham, MN 56573  
 (218) 346-5500

TRACKING	
Staked By:	HF 09/12/23
Drafted By:	MRT 11/17/23
Project Manager	Aaron Zierden 218-347-3626
As-Built By:	-
Revision	-

Construction Totals	
Route Footage	6086'
Total Underground	6086'
Total Aerial	0'
Underground (New)	0'
Aerial (New)	0'
Overpull (Ex Duct)	6086'
Overlash (Ex Strand)	0'
Plow	0'
Bore	0'
New Vaults	1
New Peds	0

**GSOC**  
 GOPHER STATE ONE CALL  
 1-800-252-1116  
 www.gopherstateonecall.org

Prepared by:  
**compass**  
 consultants inc.  
 Perham, MN 218-346-3600  
 TrustCompass.com

OVERVIEW

# Legend

## Fiber Linetypes

	Proposed Underground Fiber - Bore
	Proposed Underground Fiber - Plow
	Proposed UG Fiber in Existing Duct
	Existing Underground Fiber
	Proposed Aerial Fiber
	Proposed Aerial Overlash
	Existing Aerial Fiber
	Proposed Aerial Strand
	Existing Aerial Strand

## Other Linetypes

	Whiteline
	Rail Road
	Fence
	Retaining Wall
	Storm Sewer
	Sanitary Sewer
	Gas Line
	Tele./Comm. Line
	Water Line
	Electric Line
	Street light/Traffic signal
	District Cooling
	District Heating
	Force Main
	Other Utility or Unknown
	Utility Easement

## Abbreviations

- ABD - Abandoned Utility
- CL - Center Line
- WL - White Line
- R/W - Right of Way
- BOC - Back of Curb
- FC - Front of Curb
- EOR - Edge of Road
- S/W - Sidewalk
- HH - Handhole
- MH - Manhole
- PRT - Preterminated Cable
- PRG - Pigtail Cable

## Symbols

	Proposed Handhole
	Existing Handhole
	Reference Handhole
	Manhole
	Proposed Cabinet
	Existing Cabinet
	Bore Pit
	Proposed Splice Point
	Existing Splice Point
	Power Pole
	Proposed Slack Coil
	Existing Slack Coil
	Proposed Anchor/Down Guy
	Existing Anchor/Down Guy
	Proposed Riser
	Existing Riser
	Aerial Bond
	Aerial Ground
	BM53T - Fiber Marker
	BM53 - Fiber Marker
	Proposed PED
	Existing PED
	Proposed Splice Case
	Existing Splice Case
	Street Light
	Traffic Light
	Transformer
	Hydrant
	Catch Basin
	Tree
	1A AMW - Main Enclosure - J-Box Needed
	2A AMW - Main Enclosure - No J-Box Needed
	3A AMW - Stack Enclosure

Materials	
144 Fiber	6486
Vault (30x48)	1
Ground Rod - 8'	1



1" = -

Route	Boston Scientific Fiber Replacement
City	Maple Grove, MN
County	Hennepin
Filename	Boston Scientific Fiber Replacement
Work Order #	109359C

arvig

160 2nd St SW  
Perham, MN 56573  
(218) 346-5500

TRACKING	
Staked By:	HF 09/12/23
Drafted By:	MRT 11/17/23
Project Manager	Aaron Zierden 218-347-3626
As-Built By:	-
Revision	-

Construction Totals	
Route Footage	6086'
Total Underground	6086'
Total Aerial	0'
Underground (New)	0'
Aerial (New)	0'
Overpull (Ex Duct)	6086'
Overlash (Ex Strand)	0'
Plow	0'
Bore	0'
New Vaults	1
New Peds	0

**GSOC**  
GOPHER STATE ONE CALL  
1-800-252-1116  
www.gopherstateonecall.org

Prepared by:

compass consultants inc.  
Perham, MN 218-346-3600  
TrustCompass.com

LEGEND

# Existing Access Points



109359B-01



Ex HH 02



109359B-01



Ex HH 02



1" = -

Route  
Boston Scientific Fiber Replacement  
City  
Maple Grove, MN  
County  
Hennepin  
Filename  
Boston Scientific Fiber Replacement  
Work Order #  
109359C

**arvig**  
160 2nd St SW  
Perham, MN 56573  
(218) 346-5500

TRACKING	
Staked By:	
HF	09/12/23
Drafted By:	
MRT	11/17/23
Project Manager	
Aaron Zierden	218-347-3626
As-Built By:	-
Revision	-

**GSOC**  
GOPHER STATE ONE CALL  
1-800-252-1116  
www.gopherstateonecall.org

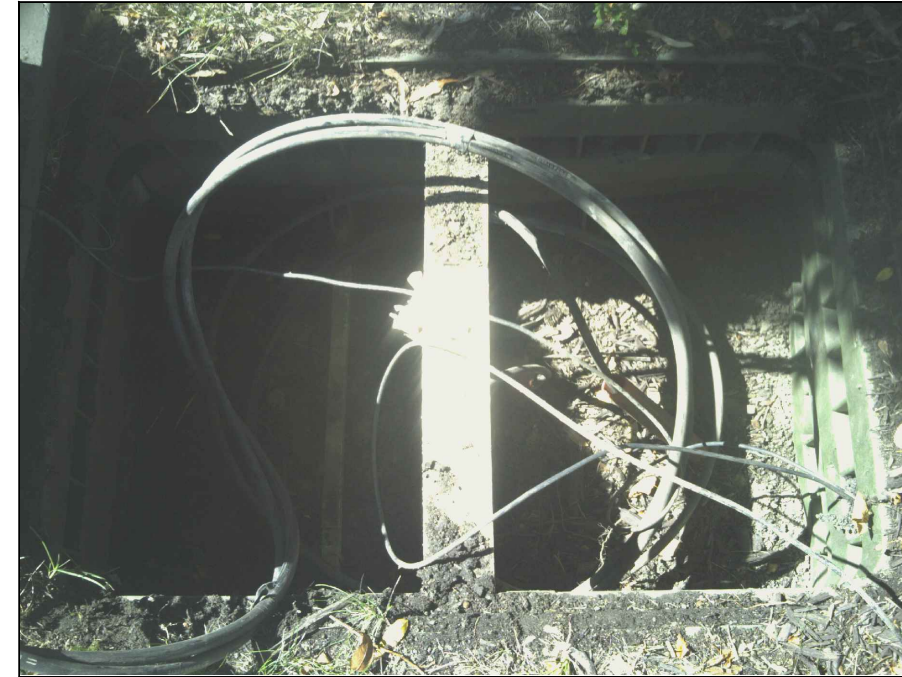
Prepared by:  
**compass**  
consultants inc.  
Perham, MN 218-346-3600  
TrustCompass.com

EXISTING AP

# Existing Access Points



Ex HH 03



Ex HH 01



Ex HH 03



1" = -

Route  
Boston Scientific Fiber Replacement  
City  
Maple Grove, MN  
County  
Hennepin  
Filename  
Boston Scientific Fiber Replacement  
Work Order #  
109359C

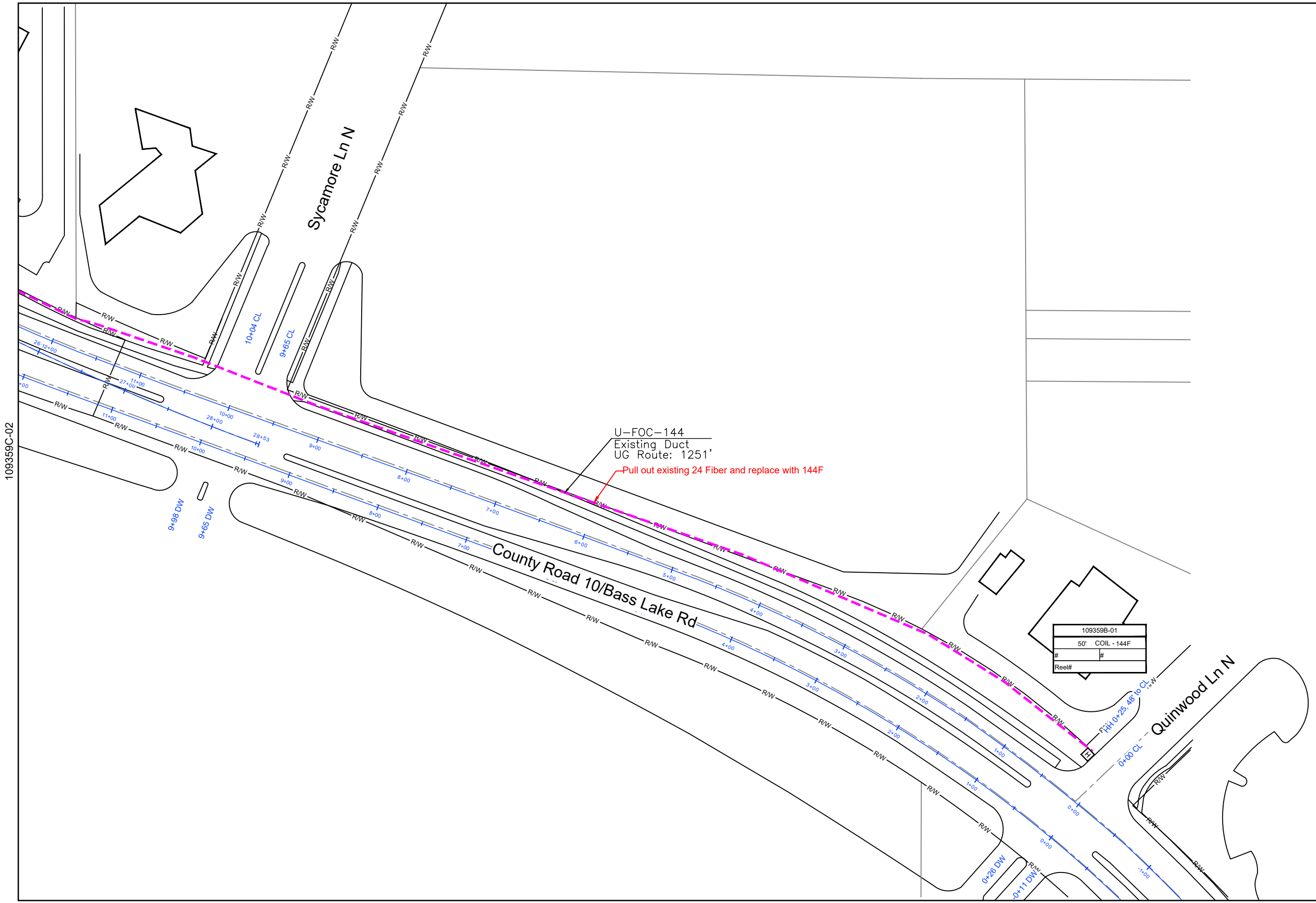
 **arvig**  
160 2nd St SW  
Perham, MN 56573  
(218) 346-5500

TRACKING	
Staked By:	
HF	09/12/23
Drafted By:	
MRT	11/17/23
Project Manager	
Aaron Zierden	218-347-3626
As-Built By:	-
Revision	-

**GSOC**  
GOPHER STATE ONE CALL  
1-800-252-1116  
www.gopherstateonecall.org

Prepared by:  
 **compass**  
consultants inc.  
Perham, MN 218-346-3600  
TrustCompass.com

EXISTING AP



1" = 100'

Route  
Boston Scientific Fiber Replacement  
City  
Maple Grove, MN  
County  
Hennepin  
Filename  
Boston Scientific Fiber Replacement  
Work Order #  
109359C

160 2nd St SW  
Perham, MN 56573  
(218) 346-5500

TRACKING	
Staked By:	HF 09/12/23
Drafted By:	MRT 11/17/23
Project Manager	Aaron Zierden 218-347-3626
As-Built By:	-
Revision	-

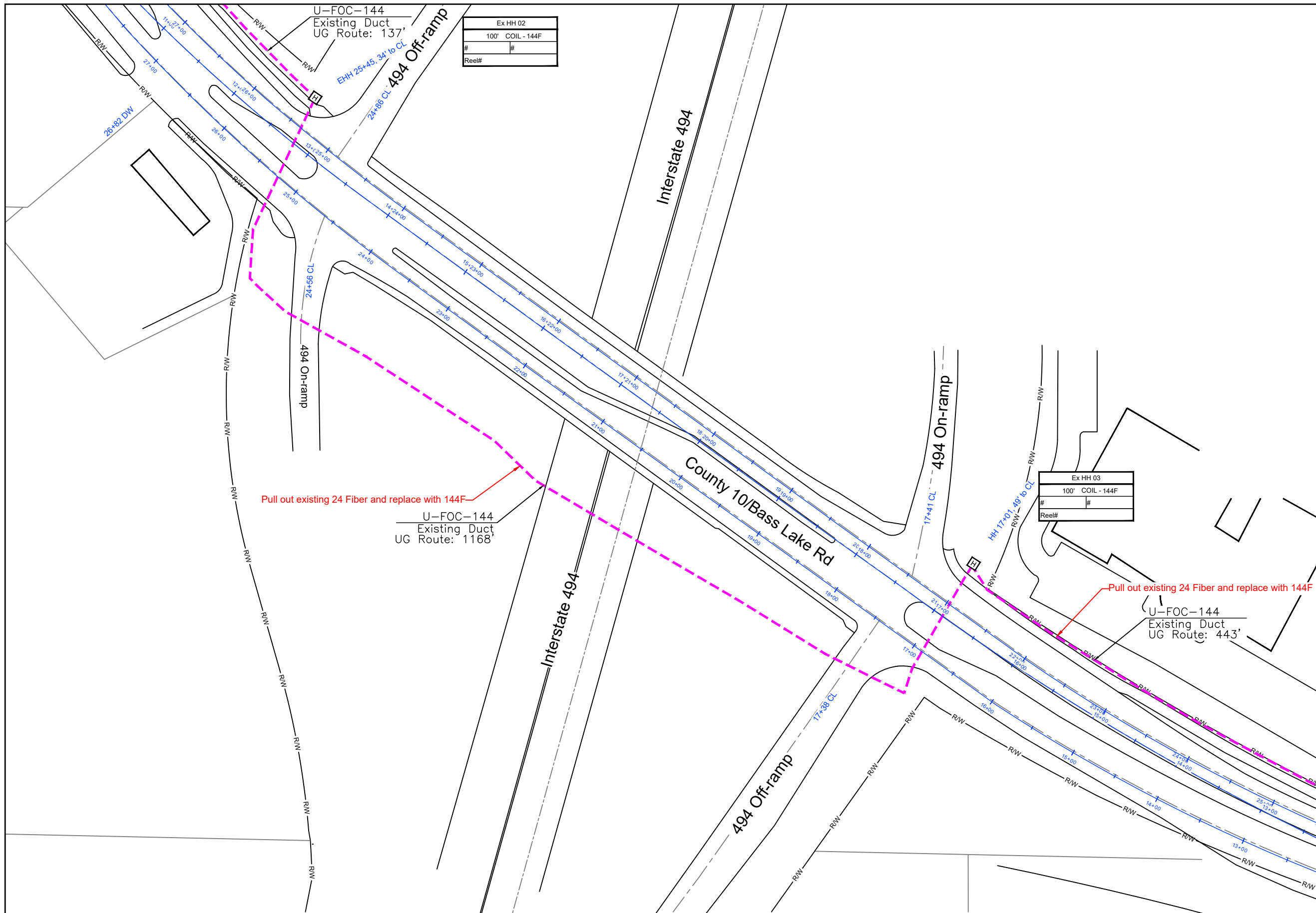
**GSOC**  
GOPHER STATE ONE CALL  
1-800-252-1116  
www.gopherstateonecall.org

Prepared by:

Perham, MN 218-346-3600  
TrustCompass.com

109359C-01

109359C-03



Ex HH 02
100' COIL - 144F
#
Reel#

Ex HH 03
100' COIL - 144F
#
Reel#



1" = 100'

Route	Boston Scientific Fiber Replacement
City	Maple Grove, MN
County	Hennepin
Filename	Boston Scientific Fiber Replacement
Work Order #	109359C

**arvig**

160 2nd St SW  
Perham, MN 56573  
(218) 346-5500

<b>TRACKING</b>	
Staked By:	HF 09/12/23
Drafted By:	MRT 11/17/23
Project Manager	Aaron Zierden 218-347-3626
As-Built By:	-
Revision	-

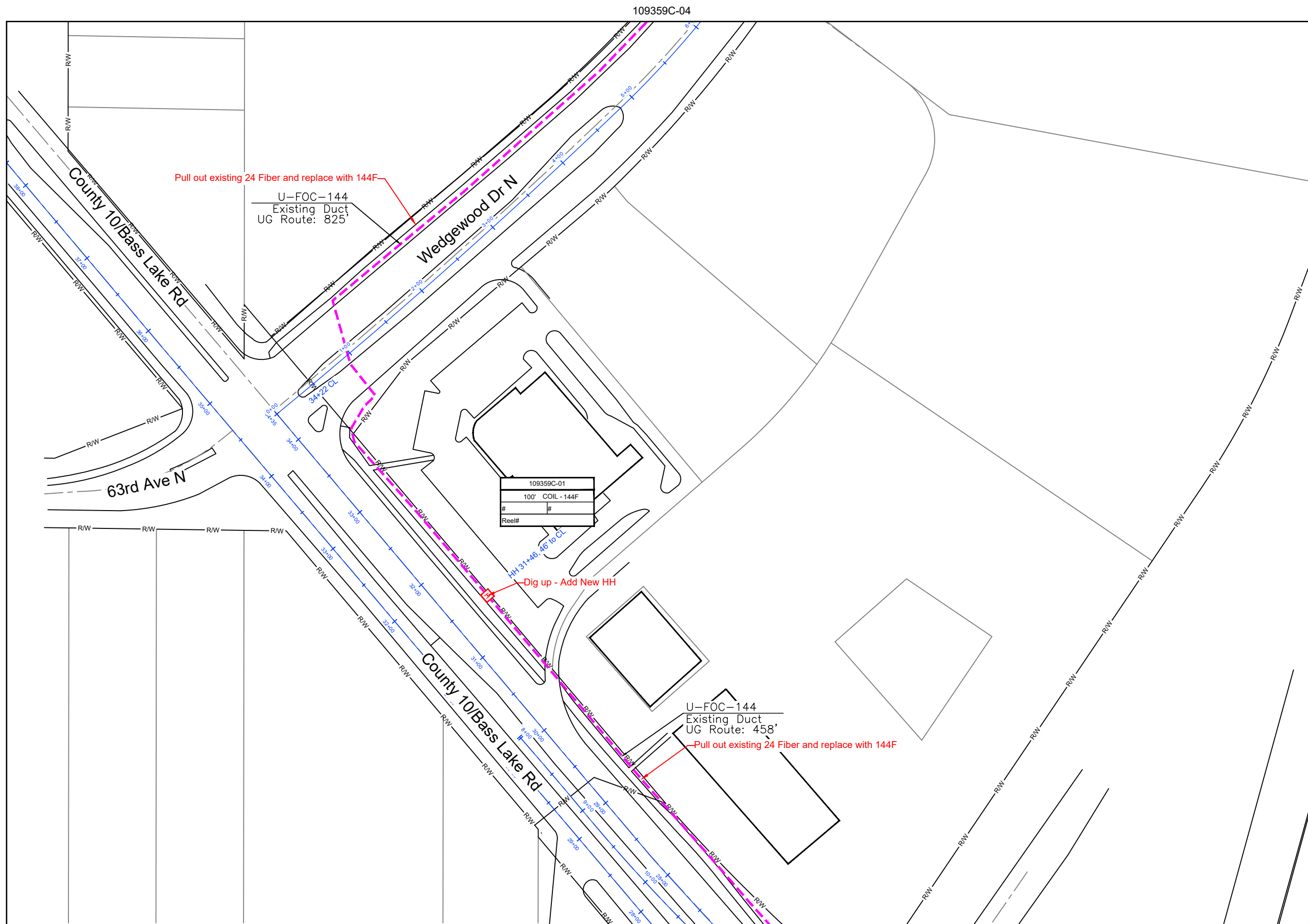
109359C-01

**GSOC**  
GOPHER STATE ONE CALL  
1-800-252-1116  
www.gopherstateonecall.org

Prepared by:

**compass**  
consultants inc.  
Perham, MN 218-346-3600  
TrustCompass.com

109359A-02



1" = 100'

Route  
Boston Scientific Fiber Replacement  
City  
Maple Grove, MN  
County  
Hennepin  
Filename  
Boston Scientific Fiber Replacement  
Work Order #  
109359C



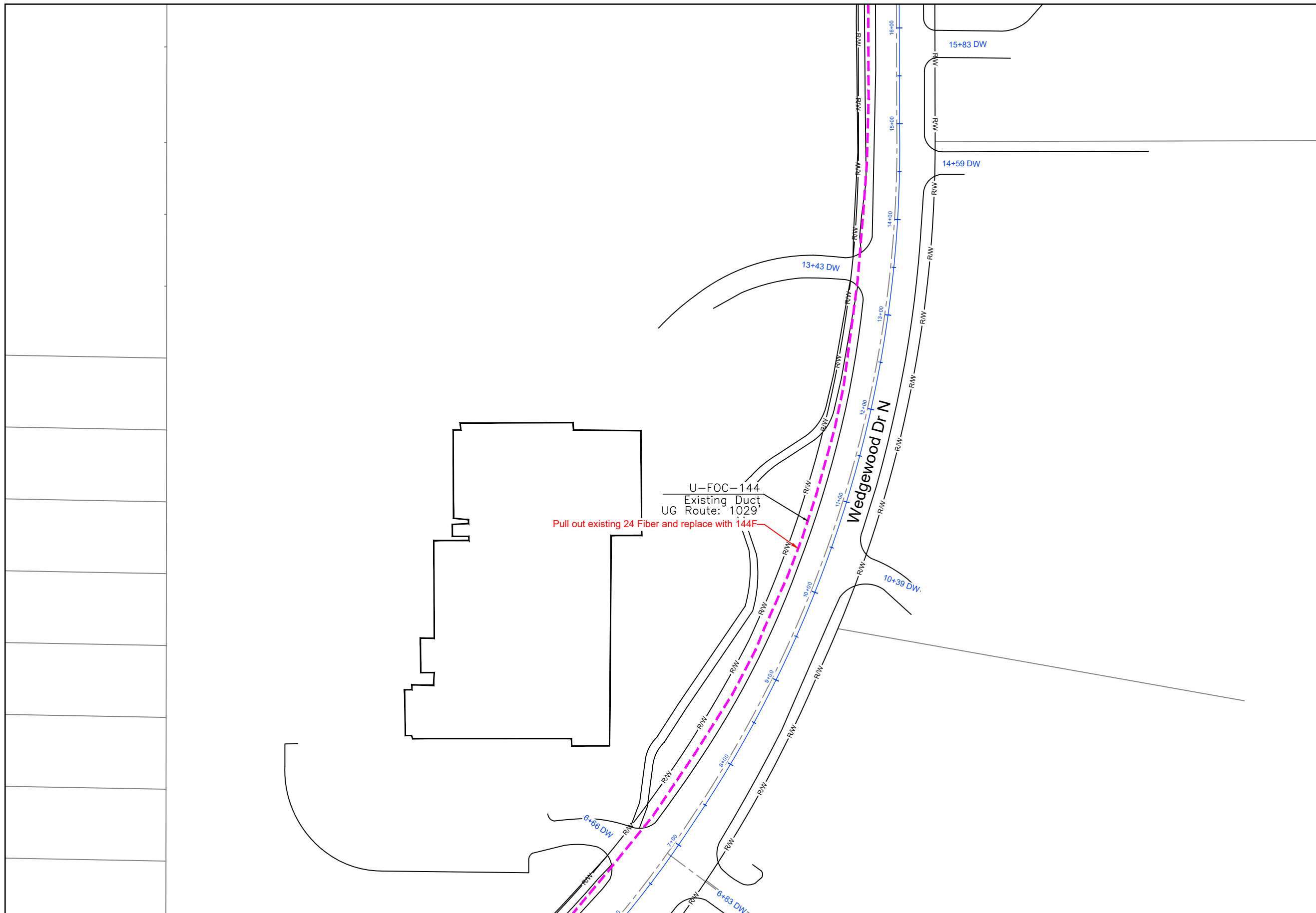
TRACKING	
Staked By:	
HF	09/12/23
Drafted By:	
MRT	11/17/23
Project Manager	
Aaron Zierden	218-347-3626
As-Built By:	-
Revision	-

**GSOC**  
GOPHER STATE ONE CALL  
1-800-252-1116  
www.gopherstateonecall.org



109359C-03

109359C-05



109359C-03



1" = 100'

Route  
Boston Scientific Fiber Replacement

City  
Maple Grove, MN

County  
Hennepin

Filename  
Boston Scientific Fiber Replacement

Work Order #  
109359C



160 2nd St SW  
Perham, MN 56573  
(218) 346-5500

### TRACKING

Staked By:	HF	09/12/23
Drafted By:	MRT	11/17/23
Project Manager	Aaron Zierden	218-347-3626
As-Built By:	-	-
Revision	-	-

### GSOC

GOPHER STATE ONE CALL  
1-800-252-1116  
www.gopherstateonecall.org

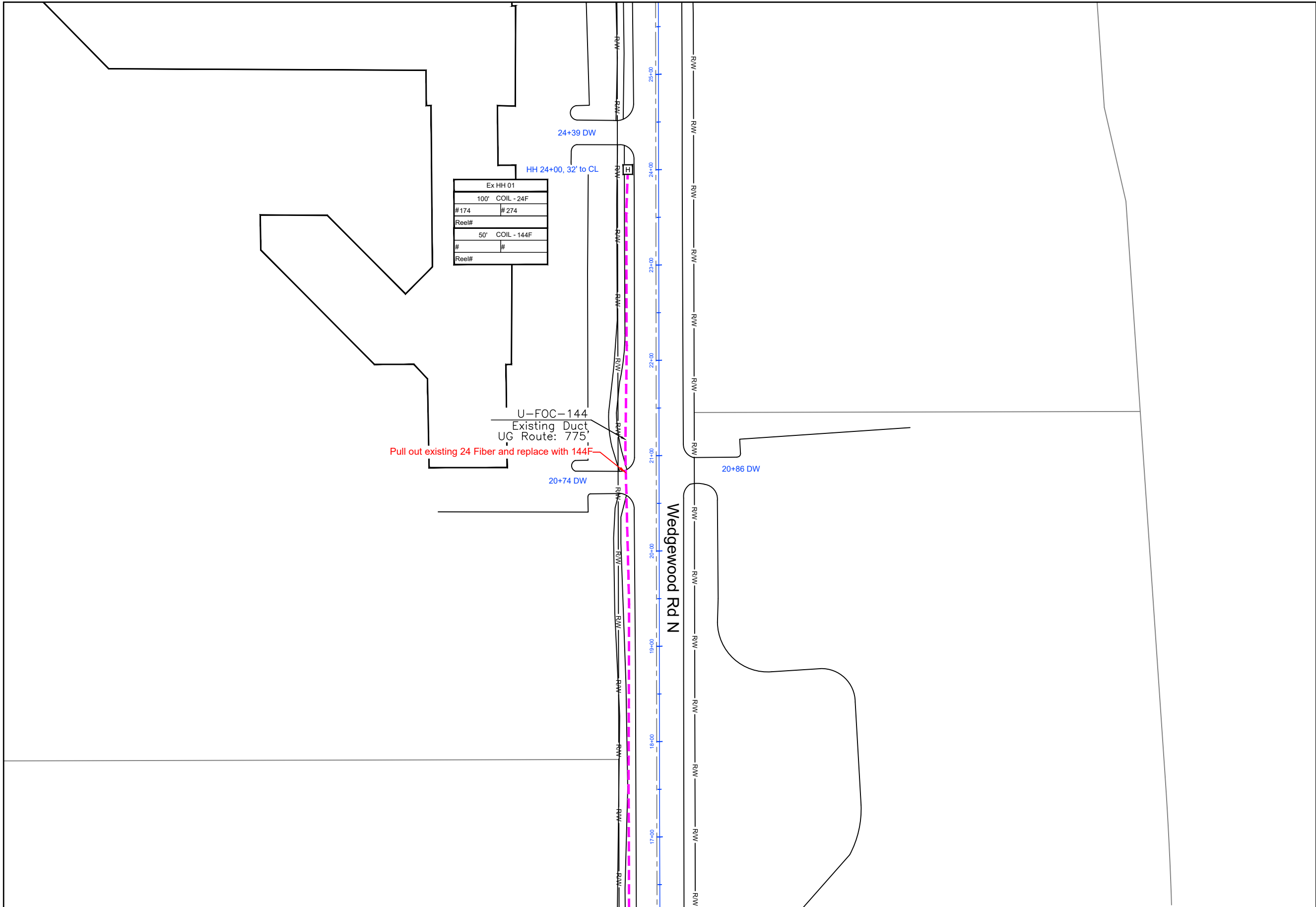
Prepared by:



Perham, MN 218-346-3600  
TrustCompass.com

109359C-04





109359C-04



1" = 100'

Route  
Boston Scientific Fiber Replacement  
City  
Maple Grove, MN  
County  
Hennepin  
Filename  
Boston Scientific Fiber Replacement  
Work Order #  
109359C



160 2nd St SW  
Perham, MN 56573  
(218) 346-5500

**TRACKING**

Staked By:	HF	09/12/23
Drafted By:	MRT	11/17/23
Project Manager	Aaron Zierden	218-347-3626
As-Built By:	-	-
Revision	-	-

**GSOC**

GOPHER STATE ONE CALL  
1-800-252-1116  
www.gopherstateonecall.org

Prepared by:



Perham, MN 218-346-3600  
TrustCompass.com

109359C-05



1" = -

Route  
Boston Scientific Fiber Replacement

City  
Maple Grove, MN

County  
Hennepin

Filename  
Boston Scientific Fiber Replacement

Work Order #  
109359C



160 2nd St SW  
Perham, MN 56573  
(218) 346-5500

### TRACKING

Staked By:  
HF 09/12/23

Drafted By:  
MRT 11/17/23

Project Manager  
Aaron Zierden 218-347-3626

As-Built By:  
- -

Revision  
- - -

Date	From Vault	To Vault	Cable/Duct	Reel Number		Start #	End #	Total	Notes:
Vault Size		Vault #	Ground Rod	Vault Size	Vault #	Ground Rod	Vault Size	Vault #	Ground Rod
	Vault				Vault			Vault	
	Vault				Vault			Vault	
	Vault				Vault			Vault	
	Vault				Vault			Vault	
Locate Post									
Fiber Marker									
Tracer Wire									

**GSOC**  
GOPHER STATE ONE CALL  
1-800-252-1116  
www.gopherstateonecall.org

Prepared by:  
 compass consultants inc.  
Perham, MN 218-346-3600  
TrustCompass.com

# FOR CONSTRUCTION USE ONLY

Tally Sheet