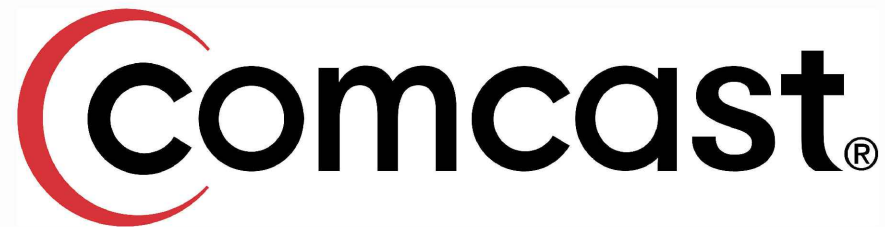




9938 STATE HWY 55 NW
 ANNANDALE, MN 55302
 320-963-2836
mike.laughlin-tlr@consulttlr.us



**JB1393907 NODE PEDESTAL
 MAPLE GROVE, MN**

KEY

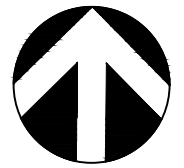
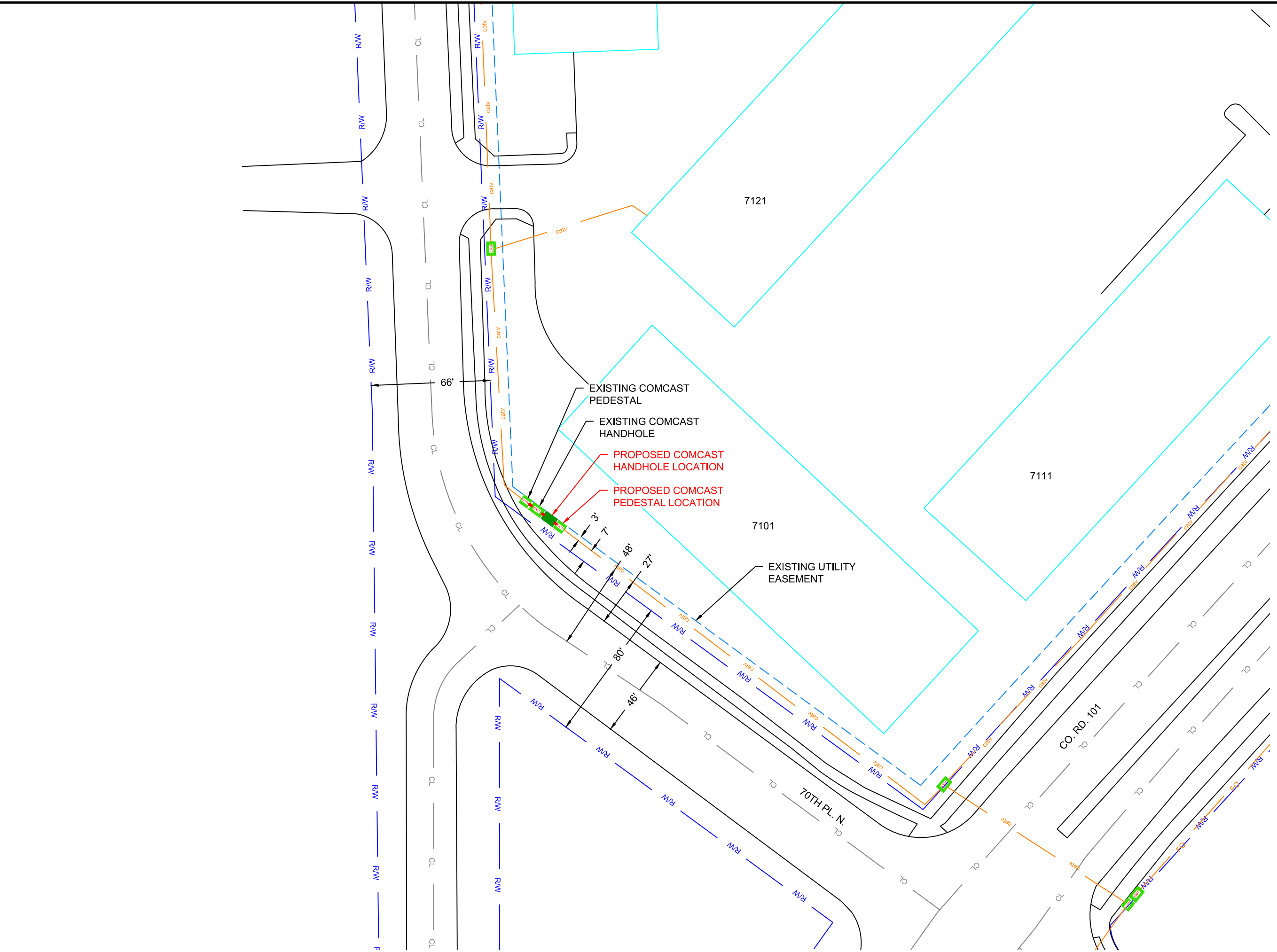
	MP PLAT EASEMENT
	TELEPHONE
	GAS MAIN
	UG POWER
	EXISTING UNDERGROUND
	EXISTING AERIAL POWER
	WATER MAIN
	SANITARY SEWER
	STORM SEWER
	STREET LIGHTS
	EXISTING FIBER
	PROPOSED ROUTE
	EDGE OF PAVEMENT
	CENTERLINE
	RIGHT OF WAY
	EXISTING FENCE
	RAILROAD TRACK
	GUARDRAIL
	UTILITY EASEMENT
	RETAINING WALL
	LANDSCAPE
	POND
	BUILDING

LEGEND

FOSW = FRONT OF SIDE WALK
 BOC = BACK OF CURB
 EOP = EDGE OF PAVEMENT
 ORWL= OFF ROAD WHITE LINE
 EOGR = EDGE OF GRAVEL ROAD
 BOW= BACK OF WALL
 BOSW = BACK OF SIDE WALK

LEGEND

<p>VAULT</p> <ul style="list-style-type: none"> H.H 30X48X36 SMALL H.H <p>EXISTING</p> <ul style="list-style-type: none"> EXISTING H.H EXISTING CATV EXISTING TEL EXISTING POWER NODE CABINET CATV PWR 	<p>M & P POLES</p> <ul style="list-style-type: none"> SIREN POLE PW POLE TRANS POLE LIGHT POLE LIGHT POLE FLAG POLE POLE ANCHOR 	<p>TRAFFIC CONTROL</p> <ul style="list-style-type: none"> TRAFFIC CONTROL TRAFFIC LIGHT TRAFFIC BUTTON STREET SIGN 	<p>RXR CROSSING SIGN</p> <ul style="list-style-type: none"> RXR CROSSING GATE RXR CROSSING SIGN RXR SIGNAL 	<p>MANHOLE</p> <ul style="list-style-type: none"> M.H BASIN ROUND BASIN FIRE HYDRANT GAS MARKER FIBER MARKER SIGNAL M.H TEL M.H STEAM M.H ELECTRICAL M.H GAS M.H WATER M.H SAN SEWER M.H STORM M.H PUBLIC LIGHTING GAS VALE WATER VALE CULVERT
<p>GAS METER</p> <ul style="list-style-type: none"> GAS METER <p>ELEC METER</p> <ul style="list-style-type: none"> ELEC METER 	<p>FIBER SPLICE</p> <ul style="list-style-type: none"> FIBER AE LOOP FIBER SPLICE FIBER NODE 	<p>TREE</p> <ul style="list-style-type: none"> TREE TREE 	<p>BOARD SIGN</p> <ul style="list-style-type: none"> BOARD SIGN ROAD CLOSED 	<p>OBJECTS</p> <ul style="list-style-type: none"> CURB STOP PARKING METER BUS STOP TRASH BENCH stake DROP MAIL BOX MAIL BOX



NORTH



1" = 50'



9938 STATE HWY 55 NW
ANNANDALE, MN 55302
320-963-2836

mike.laughlin-tlr@consulttlr.us



THE LOCATIONS OF THE UTILITIES SHOWN ON THIS DRAWING ARE IN APPROXIMATE LOCATIONS. TLR CONSULTING INC. HEREBY DISCLAIMS ANY RESPONSIBILITY TO THIRD PARTIES FOR THE ACCURACY OF THIS INFORMATION. PERSONS WORKING IN THE AREA COVERED BY THIS DRAWING MUST CONTACT MINNESOTA'S GOPHER STATE ONE CALL SYSTEM TO ASCERTAIN THE LOCATION OF UNDERGROUND UTILITIES PRIOR TO PERFORMING ANY EXCAVATION.

DESIGN ENGINEER: MICHAEL LAUGHLIN

DRAWN BY: PATRICK EDMONDS

DATE: 11-9-2023

PROJECT NUMBER:

21112023E

PROJECT NAME:

**JB1393907 NODE PEDESTAL
MAPLE GROVE, MN**

SECTION: TOWNSHIP: RANGE:

30 119 22

SHEET 1 OF 1