

CONSTRUCTION NOTES

Install new main as shown or as directed in field at time of installation. Contact Engineering for approval of field generated changes.

All test points should be installed in the boulevard or other acceptable locations and avoid placement in driving lanes.

Verify Coating test results if required prior to abandoning main. CONSTRUCTION PROCEDURES

Install, Clean and Test, and Put in Service; Proposed new main per CenterPoint Energy Construction and Services Manual.

Procedure for tapping or making tie-ins to existing gas mains: Verify existing gas main size, type, and location prior to tapping or making tie-in. Monitor and verify, using a pressure gauge, existing gas main Pressure Class within the bell hole of tap location or tie-in location prior to tapping or making tie-in.

Purge new main until essentially 100% reading is obtained on Combustible Gas Indicator. See CenterPoint Energy Construction and Service Manual Section CS-B-1.230 for purging mains into service.

Complete all Service / Meter Work as directed. (See Service Survey)

See Abandonment Procedures for abandonment and purging procedures.

Install a marker ball at a new end of main, at a valve, at each end of a horizontal offset, at road crossings and at any fitting or pressure control identified as needing to be located in the future. Refer to CenterPoint Energy Construction and Service Manual section CS-B-1.310 for installation procedures.

ABANDONMENT PROCEDURES

See Construction Procedures for installation of mains and services prior to abandonments.

Cut and Abandon existing main as shown. Purge abandoned mains until essentially 0% gas reading is obtained on Combustible Gas Indicator. See CenterPoint Energy Construction and Service Manual Section CS-B-1.110 and Section CS-B-1.230 for purging mains out of service using air movers.

Contact Engineering with questions.

NOTE: BORE ALL PAVED STREETS AND DRIVEWAYS

Minimum depth requirements for crossings of state highways and county roads is 60". Minimum depth requirements for crossings of city streets and township roads is 48". Minimum depth for parallel installations on state highways and county roads is 36". Minimum depth for parallel installations on city streets and township roads is 30". All steel pipe welds to be coated with 2 part epoxy.

When butt fusing to existing in-service polyethylene, visually inspect for the presence of hydrocarbon permeation immediately after removing fusion iron. If any bubbling is identified on the heated surface, do not join to new PE pipe. Allow to cool and cut this end off (12" length) and send to the Golden Valley Lab with street location and W.O. #. Complete tie-in/extension using an electrofusion coupling(s).

Document in field notes.

Pipe < 4-inches Diameter (Unregulated PCB area):

Project area cleared for internal impacts. Pipe being removed is unregulated for disposal if coating does not exist or is non-asbestos. Refer to CNP Construction and Service Manual CS-B-1.110, CS-B-1.330, and CS-B-1.100, for pipe to be abandoned.

CP TEST POINT WITH ANODE AND PLASTIC PIPE LOCATING STATION ROADWAY INSTALLATION

LOCATING/TRACER WIRE - PIPES

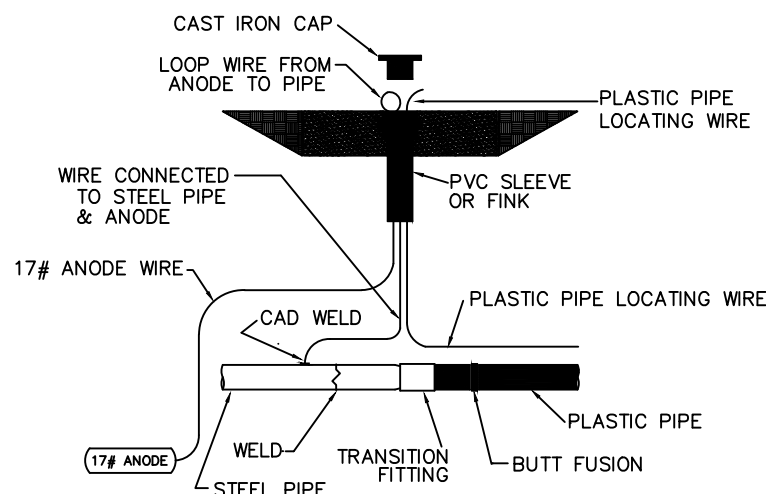
Solid 12 THHN copper tracer wire shall be buried with all plastic pipes.

NOTE: Whenever tracer wires are joined together or connected to plastic pipes or services, the connections shall be coated with moldable sealant/tape.

Tracer wire shall also be terminated with plastic pipes when inserting inside

Where steel pipes and plastic pipe are joined together, the tracer wire will be terminated in a test box as shown in the drawing below. A separate 12 THHN copper wire will be connected to the steel pipe and also terminated in the same test box with the tracer wire. of cast iron pipes.

- NOTE:
- 1. Install roadway cap at final grade.
- 2. Allow a minimum of 10" of slack in test wires.



VALVE/TEST POINT ROADWAY ABANDONMENT PROCEDURES

Within construction limits of road construction projects, remove valve box and cover. Restore as needed. For CNP only projects, remove valve box and cover when possible and restore with in-kind material. If roadway cannot be removed, fill with sand and foam the top 2". The cover will remain in place. Fill out EMP Form 130 for valve abandonments. Verify CP test point with corrosion tech prior to abandonment.

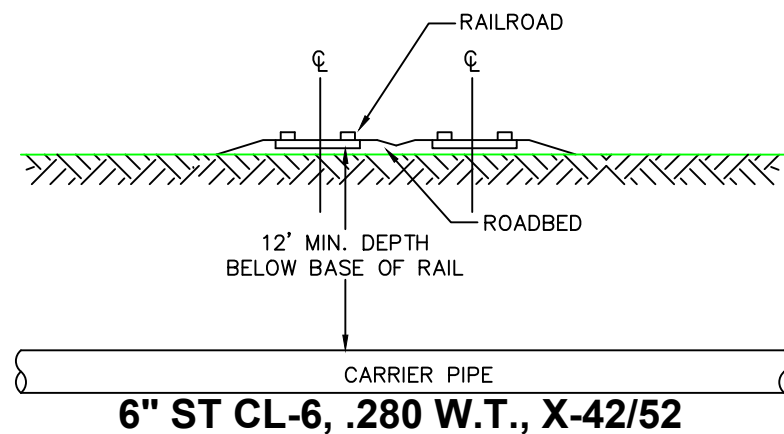
Transmission Line within project area. Follow watchdog procedures.

Transmission Line Watch Dog Process:

CNP excavation contractor will follow the Transmission Line Watch Dog Process.

If excavation will happen within 50' of a transmission line the CNP contractor needs to contact CNP dispatch to schedule a Watch Dog. (DISPATCH 612-321-5200)

Dispatch will create an "inspect contractor" work order for Foreign Construction and set up a time for the crew to be on site.



RAILROAD CROSSING (WITHOUT CASING)

BNSF "CALL BEFORE YOU DIG" AT 1-800-533-2891 FOR RAILWAY FIBER AND SIGNAL CABLE LOCATES. MINIMUM OF FIVE (5) WORKING DAYS ADVANCE NOTICE REQUIRED. BNSF'S 24-HOUR EMERGENCY NUMBER: 1-800-832-5452

NOTE: USE CAUTION WHEN CROSSING 8" ST CL-C. MAINTAIN 18" MINIMUM CLEARANCE.

INSTALL: 6" PE 90 ELL @ 200' ECL FORESTVIEW LN N @ 5' SNL 93 AVE N EXTEND: 6" PE CL-6 SOUTH, EAST

INSTALL: 6X6 EF HDPE BRANCH SADDLE @ 200' ECL FORESTVIEW LN N 6" SUPRA FLOW TEE 6" HDPE 90 DEG ELL EXTEND: 6" HDPE CL-6 PUP 6" PE ELECTROFUSION COUPLING EXTEND: 6" PE CL-6 NORTH

INSTALL: RELOCATE SERVICE TEE TO 11601 93 AVE N FURTHER WEST @ 290' ECL FORESTVIEW LN N. SEE SERVICE SURVEY.

AFTER SERVICE HAS BEEN RELOCATED: REFER TO GFIP 313-2023 FOR PROCEDURE

NOTE: INTENT IS TO RELOCATE SERVICE TO 11601 93 AVE N, WEST OF THE PROPOSED ABANDONMENT

INSTALL: 6" TRANS/SLEEVE @ MIN. 5' SNL 93 AVE N @ 100' WCL BNSF RR

6" BALON BALL VALVE IN R/W (EMP# 15960537) EXTEND: 6" ST CL-6 NORTH-EAST

INSTALL CP TEST POINT WITH ANODE AND PLASTIC PIPE LOCATING STATION USING A ROADWAY.

NOTE: INTENT IS TO CROSS BNSF RAILROAD PERPENDICULAR TO TRACKS

EXISTING: 4" PE CL-6 (A10231995) 18' BC 93 AVE N

FOLLOW GFIP 313-2023 FOR PROCEDURE

INSTALL: 4" PE TEE @ 300' WCL DEERWOOD LN N

6X4 PE REDUCER 6" PE 90 ELL 6" TRANS/SLEEVE 6" BALON BALL VALVE IN R/W (EMP# 15960538) EXTEND: 6" ST CL-6 SOUTH-WEST

INSTALL CP TEST POINT WITH ANODE AND PLASTIC PIPE LOCATING STATION USING A ROADWAY.

NOTE: INTENT IS TO CROSS BNSF RAILROAD PERPENDICULAR TO TRACKS

EXISTING: 4" TR TEE (A10231994) 270' WCL DEERWOOD LN N 27' NCL 93 AVE N

FOLLOW GFIP 313-2023 FOR PROCEDURE

REMOVE EXISTING 4" TR TEE INSTALL: 4" PRETESTED PE CL-6 PUP

CUT & ABANDON: 4" TR CL-6 SOUTH USE: 4" PE CAP

EXISTING: 4" POLY VALVE IN R/W (90842365) 31' NCL WBL 93 AVE N 268' WCL DEERWOOD LN N

SAP EQ# 15288294 SEE VALVE ABANDONMENT NOTE

NOTE: EXISTING 4" POLY VALVE IN R/W IS CURRENTLY IN "CLOSED" POSITION DUE TO LEAK AT/NEAR EXISTING CASING. USE CAUTION DURING ABANDONMENTS. OPEN VALVE PRIOR TO BLOW DOWN & PURGE. SEE GFIP 313-2023.

EXISTING: 6" POLY VALVE IN R/W (90842365) 25' SCL EBL 93 AVE N 300' ECL FORESTVIEW LN N

SAP EQ# 15288295 SEE VALVE ABANDONMENT NOTE

NOTE: EXISTING 6" POLY VALVE IN R/W IS CURRENTLY IN "CLOSED" POSITION DUE TO LEAK AT/NEAR EXISTING CASING. USE CAUTION DURING ABANDONMENTS. OPEN VALVE PRIOR TO BLOW DOWN & PURGE. SEE GFIP 313-2023.

I hereby certify that this plan, specification, or report was prepared by me or under my direct supervision and that I am a duly Licensed Professional Engineer under the laws of the state of Minnesota.

Signature: *Daniel G. Christensen*

Typed or Printed Name: DANIEL G. CHRISTENSEN

Date: 08/02/2023 License Number: 46588



MINNESOTA REGION

PROPRIETARY AND CONFIDENTIAL

PROJECT #: 97163058

M52900 MAPLE GROVE

ONE CALL: Hennepin *NE14 T119/R22 *SE11 T119/R22 * = this Page

LEGEND:

- ACTIVE MAIN
- DESIGNED MAIN
- PROPOSED ABANDONED/ OUT OF SERVICE MAIN
- ABANDONED/ OUT OF SERVICE MAIN

PIPE REQUIRED:

- 417' 6" STL CL-6
- 17' 6" HDPE CL-6
- 22' 4" PE CL-6
- 163' 6" PE CL-6
- 619' PIPE

PROPOSED ABANDONED PIPE:

- 3' 6" STL CL-6
- 118' 6" TR CL-6
- 258' 4" TR CL-6
- 1' 4" PE CL-6
- 186' 4" STL CL-6
- 566' PIPE

COPIES:

- PIPELINE INTEGRITY PACKET: N
- STATION MANAGER: N
- DD NUMBER: N/A
- CORROSION: PATRICK CARLSON EMP: Y
- 15288294 (OLD)
- 15288295 (OLD)
- 15960537 (NEW)
- 15960538 (NEW)

SURVEYOR REQUIRED? N

RETURN PACKET TO ENG? N

JOB BRIEFING REQUIRED? Y

GFIP #: 313-2023

PERMITS: CITY OF MAPLE GROVE HENNEPIN COUNTY BNSF RAILROAD

PROJECT DESCRIPTION: SCOR 93 & CR 81

DESIGNER: Kevin Scott PHONE #: 612-321-5508 DRAWN BY: Kevin Scott DESIGN DATE: 8/31/2021

REVISION INFO:

Main	SCALE 1" = 60'
SS#	SHEET 1 OF 1

7/31/2023 2:58:35 PM DESIGNER EXPRESS DESIGN