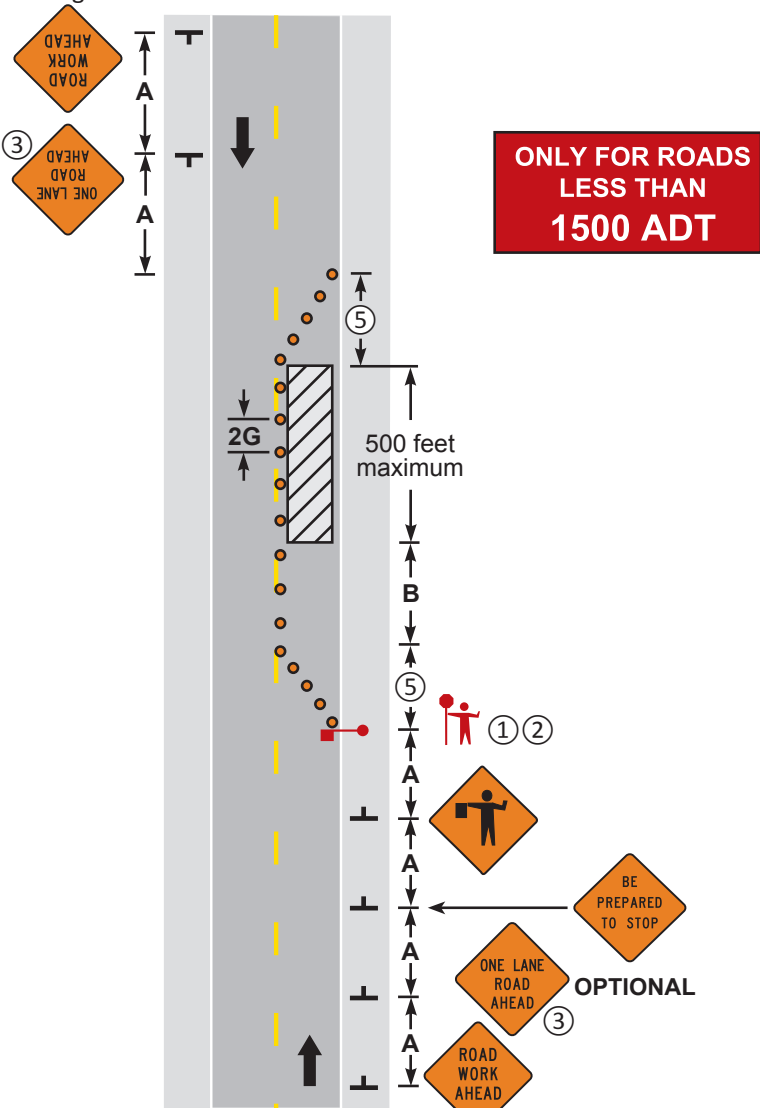


**NOTES:**

- ① The approach sight distance to the flagger shall be at least the Decision Sight Distance (**D**).
- ② If the flagger's ability to see oncoming motorists beyond the work space is less than the Decision Sight Distance (**D**), two flaggers shall be used - See [Layout 16](#).
- ③ The ONE LANE ROAD AHEAD sign may be omitted when the posted speed limit is 40 mph or less.
- 4. If the work space must be left unattended at night use [Layout 14](#).
- ⑤ The two-way taper should be 50 feet in length and using 5 equally spaced channelizing devices.



**LANE CLOSURE, ONE FLAGGER  
TWO-LANE, TWO-WAY ROAD**

**3 DAYS or LESS**

6K-15

**LAYOUT 15**