

CITY OF MAPLE GROVE, MN - HENNEPIN COUNTY
CP 18-23 EDGEWATER ON COOK LAKE
 LOCATED FROM WALNUT GROVE LN N TO 73RD AVEN N

LUMEN WORK PLAN
 PROJECT P.005213 / TERR-1008036

PLANS PREPARED FOR



LUMEN ENGINEER: BILL BYERS
 EMAIL: BILL.BYERS@LUMEN.COM
 PHONE: 612.825.2383
 LUMEN CONSTRUCTION CONTACT: BEN SNOOK
 EMAIL: BENJAMIN.SNOOK@LUMEN.COM
 PHONE: 612.210.4435
 WIRECENTER: OSSBENXNO

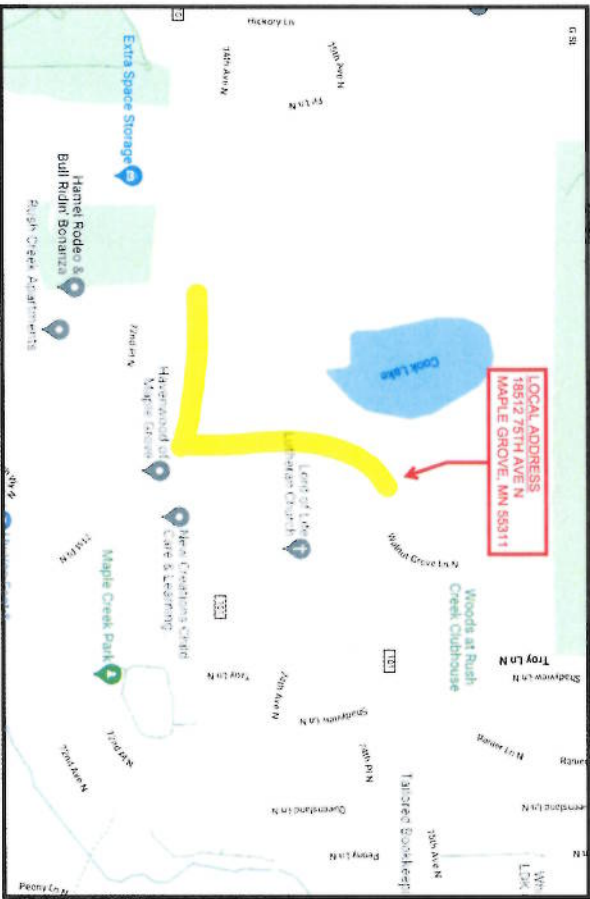
PLANS PREPARED BY



TERRATECH ENGINEER: TJ ALLISON
 PHONE: 612.388.7375
 EMAIL: RALLISON@TERRATECHLLC.NET

PROJECT CONTACT

OWNER: KELLY MAITZKE - CITY OF MAPLE GROVE
 PHONE: 763.494.6365
 EMAIL: KMATZKE@MAPLEGROVEMN.GOV
 PROJECT ENGINEER: JEFF KURTH - SRP
 PHONE: 612.518.2145
 EMAIL: JKURTH@SRPCONSULTING.COM
 SUPERVISE/STAKING: JEFF KURTH - SRP
 PHONE: 612.518.2145
 EMAIL: JKURTH@SRPCONSULTING.COM
 ROAD CONTRACTOR: ANDY BURKE - SR WEIDEMA
 PHONE: TBD
 EMAIL: ABURKE@SRWEIDEMA.COM



FOR REFERENCE ONLY

NOTES:
 ALL EXISTING AND PROPOSED CONDITIONS ARE BASED ON INFORMATION PROVIDED BY OTHERS. LUMEN CANNOT BE RESPONSIBLE FOR THE ACCURACY OF THE INFORMATION. DEPTHS AND ELEVATIONS SHOULD BE FIELD VERIFIED PRIOR TO CONSTRUCTION. PROPOSED DESIGN MODIFICATIONS ARE RECOMMENDATIONS ONLY AND SHOULD BE VERIFIED PRIOR TO CONSTRUCTION.

PERMITS REQUIRED: YES NO
 CITY: MAPLE GROVE
 COUNTY: _____
 STATE: _____
 RAILROAD: _____
 PIPELINE: _____
 DNR: _____
 MISCELLANEOUS: _____
 CUTS REQUIRED: YES NO
 FIBER OPTIC
 COPPER
 MIGRATIONS REQUIRED: YES NO
 PRECONSTRUCTION MEETING DATE: TBD
 EXPECTED ROADWAY CONSTRUCTION START DATE: 6/6/22



REVISION	DATE

PLAN SYMBOLS

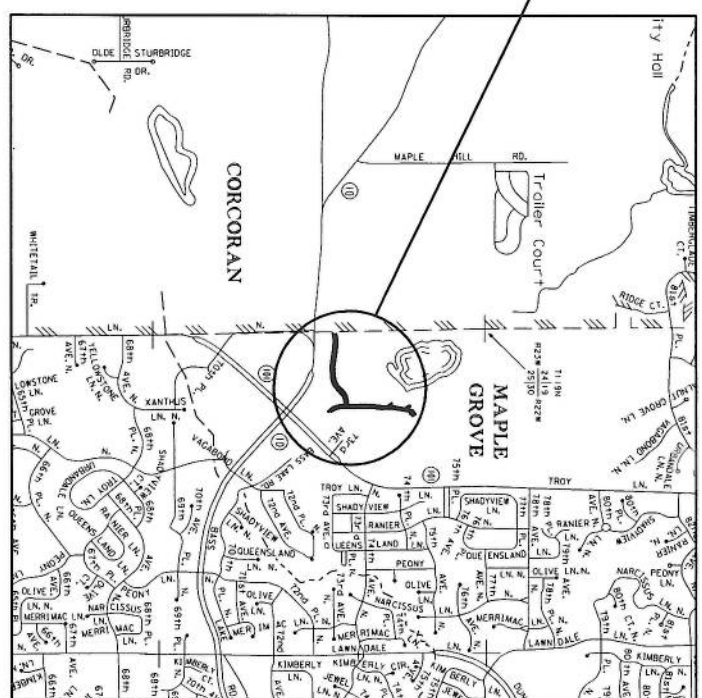
STREET LIGHT	CONCRETE MANHOLE	CONCRETE CURB AND GUTTER	CONCRETE WALK
BITUMINOUS BASE	BITUMINOUS SURFACE	AGGREGATE BASE	SELECT GRANULAR BORROW
STORM SEWER	CONCRETE CURB AND GUTTER	CONCRETE WALK	SANITARY SEWER
WATER MAIN	WATER MAIN	WATER MAIN	WATER MAIN
... (many more symbols) (many more symbols) (many more symbols) (many more symbols) ...

CITY OF MAPLE GROVE

HENNEPIN COUNTY, MINNESOTA
 PLANS FOR: SELECT GRANULAR BORROW, AGGREGATE BASE,
 BITUMINOUS BASE, BITUMINOUS SURFACE, STORM SEWER, CONCRETE CURB AND GUTTER,
 CONCRETE WALK, SANITARY SEWER AND WATER MAIN

EDGEWATER ON COOK LAKE
 CITY PROJECT NO. 18-23

PROJECT LOCATION
 C.P. NO. 18-23



PLAN REVISIONS

DATE	REVISION	APPROVED BY
09/09/2021	ADDendum #1	TYLER A. SMITH

THIS PLAN AND/OR SPECIFICATION WAS PREPARED SPECIFICALLY FOR THIS PROJECT, AND ANY RE-USE OF DETAILS OR SPECIFICATIONS ON OTHER PROJECTS IS THE RESPONSIBILITY OF THE PERSON, AGENCY, OR CORPORATION USING THIS PLAN OR SPECIFICATION DATA FROM THIS PROJECT.

THE SURFACE UTILITY INFORMATION IN THIS PLAN IS UTILITY QUALITY LEVEL D. THE USER SHALL VERIFY THE LOCATION AND DEPTH OF ALL UTILITIES PRIOR TO CONSTRUCTION. THE USER SHALL BE RESPONSIBLE FOR THE COLLECTION AND DEPICTION OF EXISTING SUBSURFACE UTILITY DATA.

GOVERNING SPECIFICATIONS

THE 2020 EDITION OF THE MINNESOTA DEPARTMENT OF TRANSPORTATION STANDARD SPECIFICATIONS FOR CONSTRUCTION SHALL GOVERN.
 ALL TRAFFIC CONTROL DEVICES SHALL GOVERN AND BE PLACED IN ACCORDANCE TO THE MINNESOTA MANUAL ON UNIFORM TRAFFIC CONTROL DEVICES (MUTCD) AND PART VI: FIELD MANUAL FOR TEMPORARY TRAFFIC CONTROL ZONE LAYOUTS.
 CITY OF MAPLE GROVE STANDARD SPECIFICATION FOR UTILITY AND STREET CONSTRUCTION 2021.

INDEX

SHEET NO.	TITLE DESCRIPTION
1	TITLE SHEET
2	GENERAL LAYOUT AND ALIGNMENT PLANS
3-4	STATEMENT OF ESTIMATED QUANTITIES
5	CONSTRUCTION SCHEDULES AND STANDARD PLATES
6	STANDARD PLAN SHEETS
7-21	STANDING AND TRAFFIC CONTROL PLANS
22-23	ALIGNMENT PLANS
24-25	EXISTING TOPOGRAPHY AND UTILITY PLANS
26-28	REMOVAL PLANS
29-30	CONSTRUCTION PLANS
31-32	INTERSECTION AND DRIVEWAY
33-34	PROFILES, REGULATIONS AND DETAILS
35-36	DRAINAGE AND SUPERELEVATION PLANS
37-45	PROFILES, REGULATIONS AND DETAILS
46-48	PROFILES, REGULATIONS AND DETAILS
49-53	SANITARY SEWER AND WATERMAIN PLANS
54-55	EROSION CONTROL AND TURN ESTABLISHMENT PLANS
56-57	STANDING AND STRIPING PLANS
58-59	CROSS SECTIONS
59-79	CROSS SECTIONS

THIS PLAN CONTAINS 79 SHEETS



I HEREBY CERTIFY THAT THIS PLAN WAS PREPARED BY ME OR UNDER MY DIRECT SUPERVISION AND THAT I AM A DULY LICENSED PROFESSIONAL ENGINEER UNDER THE LAWS OF THE STATE OF MINNESOTA.

SIGNATURE: *Tyler A. Smith*
 DATE: 01/21/2022
 U.L. NO.: 5618
 PRINT NAME: TYLER A. SMITH



NO.	DATE	BY	REVISION

DESIGNED BY
 CHECKED BY
 DATE 01/23/2022 License # 58135
 CITY PROJECT NO. 18-21

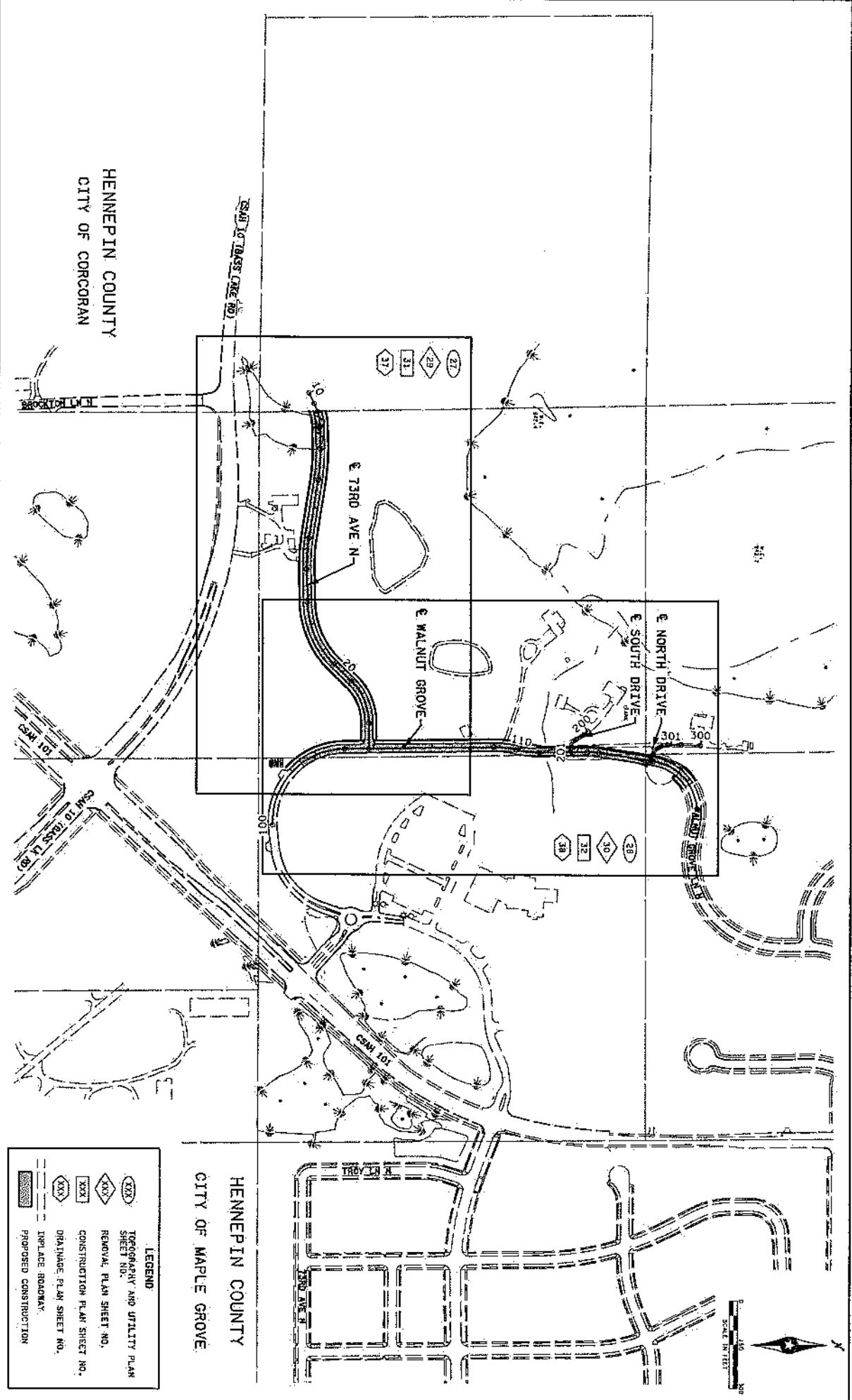
DESIGNED BY
 CHECKED BY
 DATE 01/23/2022 License # 58135
 CITY PROJECT NO. 18-21

DESIGNED BY
 CHECKED BY
 DATE 01/23/2022 License # 58135
 CITY PROJECT NO. 18-21



CITY OF MAPLE GROVE
 GENERAL LAYOUT
 COOK LAKE

SHEET
 2
 OF
 79



HENNEPIN COUNTY
 CITY OF CORCORAN

HENNEPIN COUNTY
 CITY OF MAPLE GROVE

LEGEND

(XXX)	TOPOGRAPHY AND UTILITY PLAN SHEET NO.
(XXX)	REMOVAL PLAN SHEET NO.
(XXX)	CONSTRUCTION PLAN SHEET NO.
(XXX)	DRAINAGE PLAN SHEET NO.
(XXX)	IMPLACE BROADWAY
(XXX)	PROPOSED CONSTRUCTION

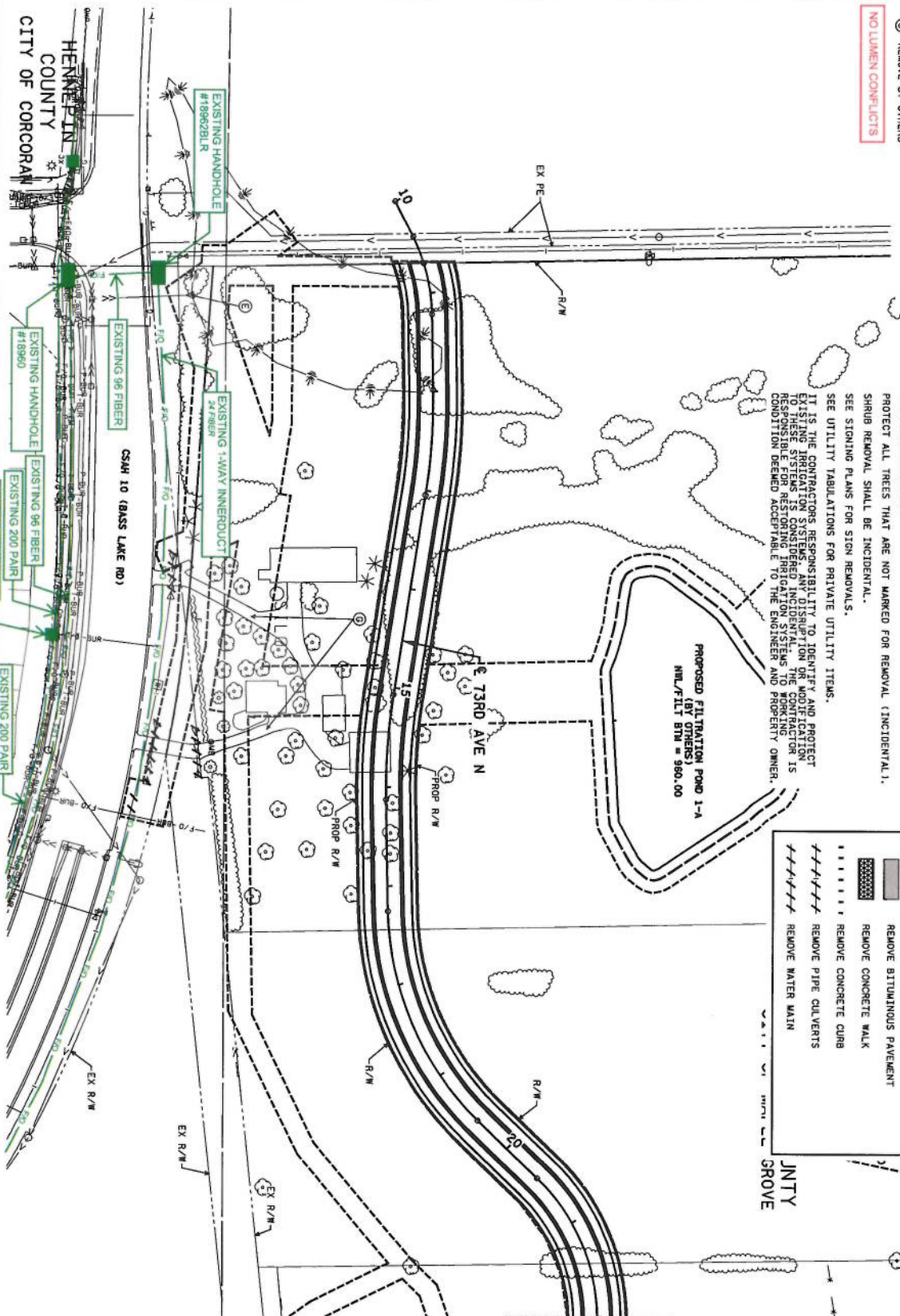
- NOTES:
- ⓔ REMOVE PIPE APRON
 - ⓓ REMOVE BY OTHERS
- NO LUMEN CONFLICTS**

GENERAL NOTES:

ALL TREES TO BE CLEARED AND GRUBBED WILL BE MARKED BY THE FIELD ENGINEER.
 PROTECT ALL TREES THAT ARE NOT MARKED FOR REMOVAL (INCIDENTAL).
 SHRUB REMOVAL SHALL BE INCIDENTAL.
 SEE SIGNING PLANS FOR SIGN REMOVALS.
 SEE UTILITY TABULATIONS FOR PRIVATE UTILITY ITEMS.
 IT IS THE CONTRACTOR'S RESPONSIBILITY TO IDENTIFY AND PROTECT EXISTING UTILITIES AND TO PROTECT THEM FROM DAMAGE. THE CONTRACTOR IS RESPONSIBLE FOR RESTORING IRRIGATION SYSTEMS TO WORKING CONDITION DEEMED ACCEPTABLE TO THE ENGINEER AND PROPERTY OWNER.

LEGEND

	CLEAR AND GRUB (ACRE)
	REMOVE BITUMINOUS PAVEMENT
	REMOVE CONCRETE WALK
	REMOVE CONCRETE CURB
	REMOVE PIPE CULVERTS
	REMOVE WATER MAIN



SEE SHEET NO. 30
 MATCH LINE STA 22+00.00



NO.	DATE	BY	APP'D	REVISION
1	01/27/2022	T. SMITH		

DESIGNED BY	A. AFFELDT
CHECKED BY	T. SMITH
DESIGNED BY	T. SMITH
CHECKED BY	T. SMITH

DATE	01/27/2022	LICENSE #	56135
CITY PROJECT NO.	18-23	COMM. NO.	11856

SRF

CITY OF MAPLE GROVE
REMOVAL PLANS
COOK LAKE

SHEET	29
OF	79

NO.	DATE	BY	CHK	APP	REVISION

1. I hereby certify that this work constitutes a report of professional engineering services rendered by me or under my direct supervision and that I am a duly licensed professional engineer in the State of Minnesota.
 P/E (In Name) **ALEX A. SMITH**
 Date: **01/28/2022** License # **56135**

DESIGNED BY
A. APPELDT
 CHECKED BY
T. SMITH



CITY OF MAPLE GROVE
 REMOVAL PLANS
COOK LAKE
 SHEET
30
 OF
79

