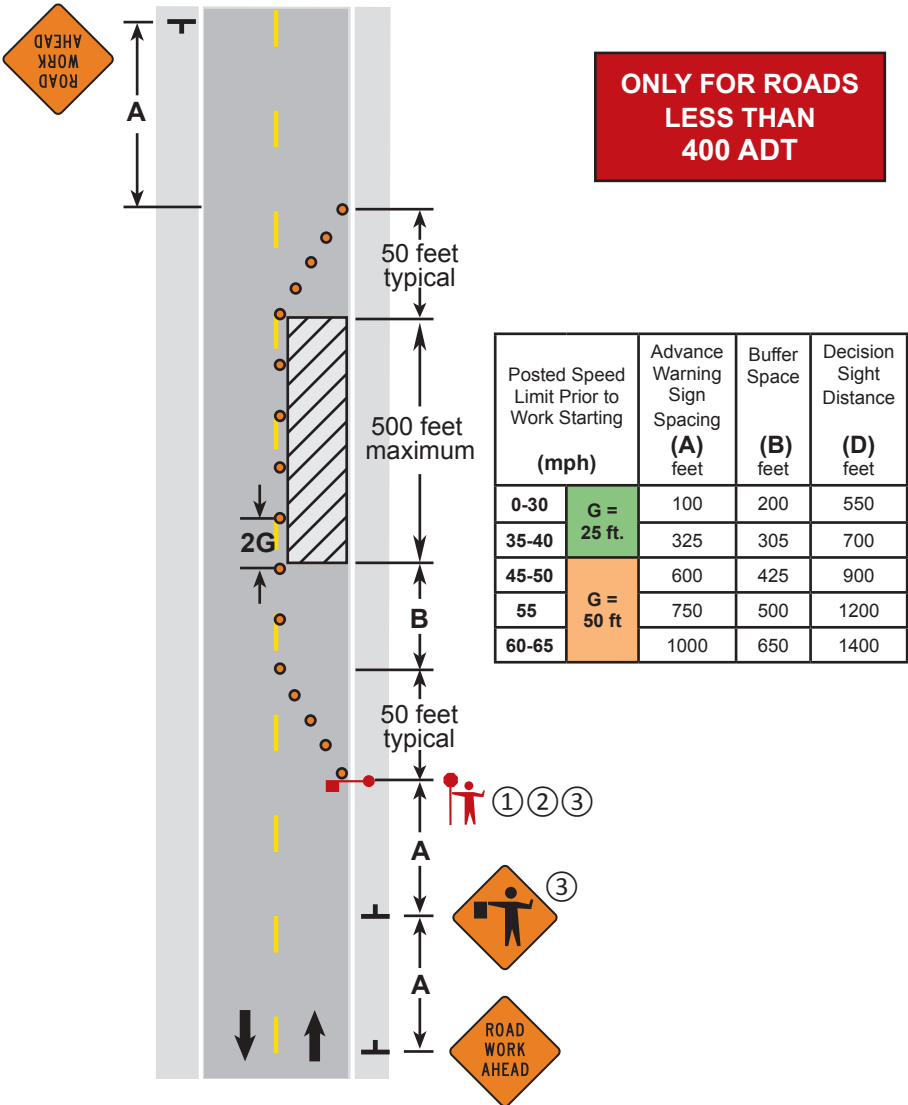


NOTES:

- ① The approach sight distance to the flagger shall be at least the Decision Sight Distance (**D**).
- ② If the flagger's ability to see oncoming motorists beyond the work space is less than the Decision Sight Distance (**D**), two flaggers shall be used - See [Layout 16](#).
- ③ The Flagger and Flagger Ahead sign may be omitted if the operation is during daylight hours, 12 hours or less, and traffic is able to self-regulate.
4. If the work space must be left unattended at night use [Layout 14](#).



**LANE CLOSURE, ONE FLAGGER
TWO-LANE, TWO-WAY ROAD**

3 DAYS or LESS

6K-4

LAYOUT 4