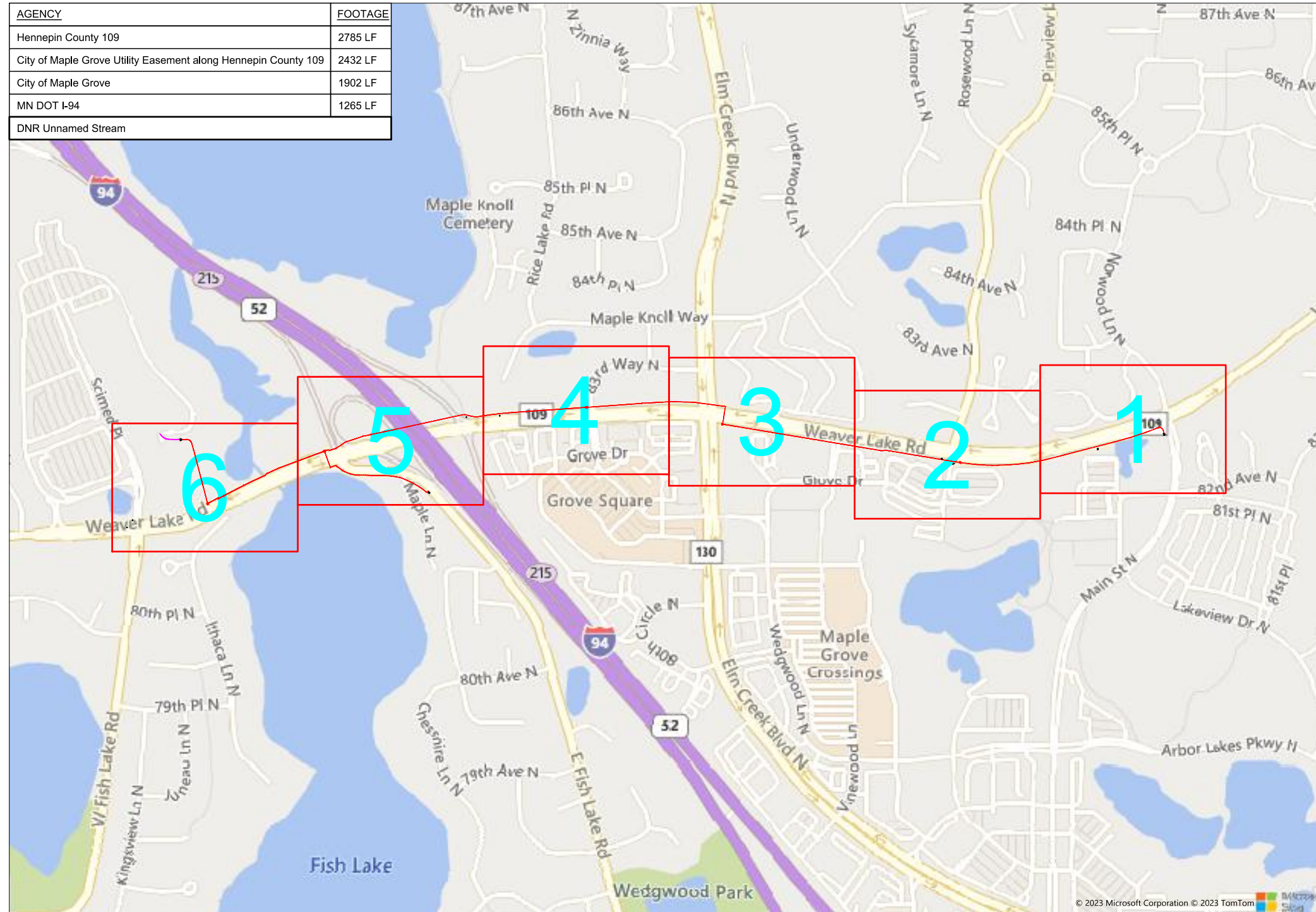


Boston Scientific TMO

AGENCY	FOOTAGE
Hennepin County 109	2785 LF
City of Maple Grove Utility Easement along Hennepin County 109	2432 LF
City of Maple Grove	1902 LF
MN DOT I-94	1265 LF
DNR Unnamed Stream	



2 SCIMED PL - MAPLE GROVE, MN 55311



1" = -

Route	Boston Scientific TMO
City	Maple Grove
County	Hennepin
Filename	Boston Scientific TMO
Work Order #	109359



160 2nd St SW
Perham, MN 56573
(218) 346-5500

TRACKING

Staked By:	HF	6/20/23
Drafted By:	MRT	6/20/23
Project Manager	Jerrod Strode	218-347-3629
As-Built By:	-	-
Revision	-	-

Construction Totals

Route Footage	9126'
Total Underground	9126'
Total Aerial	0'
Underground (New)	8960'
Aerial (New)	0'
Overpull (Ex Duct)	166'
Overlash (Ex Strand)	0'
Plow	0'
Bore	8960'
New Vaults	6
New Peds	0

GSOC

GOPHER STATE ONE CALL
1-800-252-1116
www.gopherstateonecall.org

Prepared by:

Perham, MN 218-346-3600
TrustCompass.com

OVERVIEW

Legend

Fiber Linetypes

	Proposed Underground Fiber - Bore
	Proposed Underground Fiber - Plow
	Proposed UG Fiber in Existing Duct
	Existing Underground Fiber
	Proposed Aerial Fiber
	Proposed Aerial Overlash
	Existing Aerial Fiber
	Proposed Aerial Strand
	Existing Aerial Strand

Other Linetypes

	Rail Road
	Fence
	Retaining Wall
	Storm Sewer
	Sanitary Sewer
	Gas Line
	Tele./Comm. Line
	Water Line
	Electric Line
	Street light/Traffic signal
	District Cooling
	District Heating
	Force Main
	Other Utility or Unknown
	Utility Easement

Abbreviations

- CL - Center Line
- R/W - Right of Way
- BOC - Back of Curb
- FC - Front of Curb
- EOR - Edge of Road
- S/W - Sidewalk
- HH - Handhole
- MH - Manhole
- PRT - Preterminated Cable
- PRG - Pigtail Cable

Symbols

	Proposed Handhole
	Existing Handhole
	Reference Handhole
	Manhole
	Proposed Cabinet
	Existing Cabinet
	Bore Pit
	Proposed Splice Point
	Existing Splice Point
	Power Pole
	Proposed Slack Coil
	Existing Slack Coil
	Proposed Anchor/Down Guy
	Existing Anchor/Down Guy
	Proposed Riser
	Existing Riser
	Aerial Bond
	Aerial Ground
	BM53T - Fiber Marker
	BM53 - Fiber Marker
	Proposed PED
	Existing PED
	Proposed Splice Case
	Existing Splice Case
	Street Light
	Traffic Light
	Transformer
	Hydrant
	Catch Basin
	Tree
	1A AMW - Main Enclosure - J-Box Needed
	2A AMW - Main Enclosure - No J-Box Needed
	3A AMW - Stack Enclosure

Materials	
48 Fiber	9826
1 X 1.25" Duct	560
2 X 1.25" Duct	8400
Vault(17x30)	6
Ground Rod - 8'	6



1" = -

Route	Boston Scientific TMO
City	Maple Grove
County	Hennepin
Filename	Boston Scientific TMO
Work Order #	109359

arvig

160 2nd St SW
Perham, MN 56573
(218) 346-5500

TRACKING	
Staked By:	HF 6/20/23
Drafted By:	MRT 6/20/23
Project Manager	Jerrold Strode 218-347-3629
As-Built By:	-
Revision	-

Construction Totals	
Route Footage	9126'
Total Underground	9126'
Total Aerial	0'
Underground (New)	8960'
Aerial (New)	0'
Overpull (Ex Duct)	166'
Overlash (Ex Strand)	0'
Plow	0'
Bore	8960'
New Vaults	6
New Peds	0

GSOC
GOPHER STATE ONE CALL
1-800-252-1116
www.gopherstateonecall.org

Prepared by:

compass
consultants inc.
Perham, MN 218-346-3600
TrustCompass.com

LEGEND

Existing Access Points



EX WS



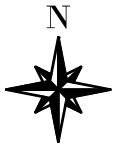
Customer HH



EX WS



Customer HH



1" = -

Route
Boston Scientific TMO
City
Maple Grove
County
Hennepin
Filename
Boston Scientific TMO
Work Order #
109359



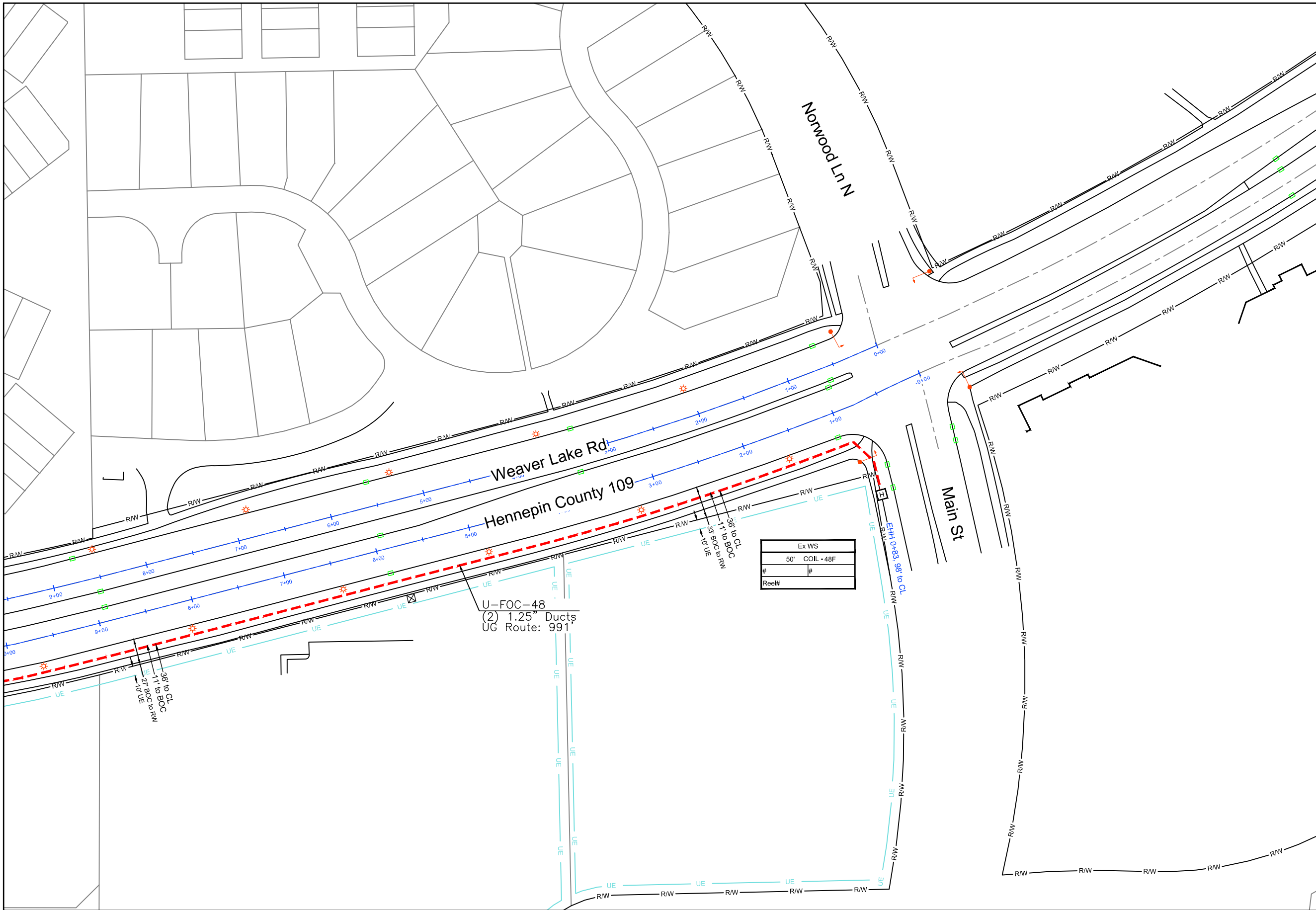
160 2nd St SW
Perham, MN 56573
(218) 346-5500

TRACKING	
Staked By:	
HF	6/20/23
Drafted By:	
MRT	6/20/23
Project Manager	
Jerrod Strode	218-347-3629
As-Built By:	-
Revision	-

GSOC
GOPHER STATE ONE CALL
1-800-252-1116
www.gopherstateonecall.org

Prepared by:
 compass consultants inc.
Perham, MN 218-346-3600
TrustCompass.com

EXISTING AP



109359-02



1" = 100'

Route
Boston Scientific TMO

City
Maple Grove

County
Hennepin

Filename
Boston Scientific TMO

Work Order #
109359



160 2nd St SW
Perham, MN 56573
(218) 346-5500

TRACKING

Staked By:
HF 6/20/23

Drafted By:
MRT 6/20/23

Project Manager
Jerrod Strode 218-347-3629

As-Built By:
- -

Revision
- -

GSOC

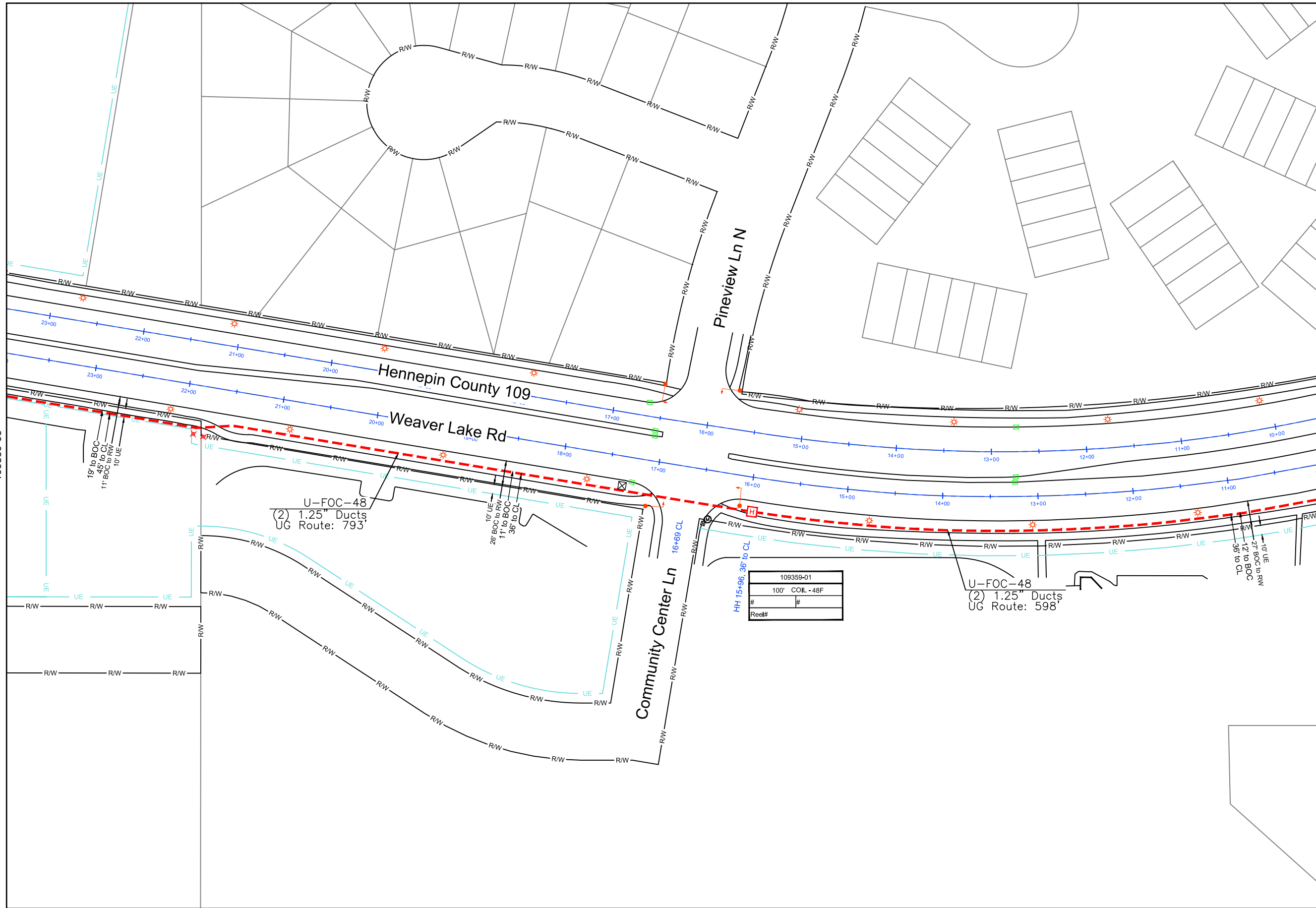
GOPHER STATE ONE CALL
1-800-252-1116
www.gopherstateonecall.org

Prepared by:



Perham, MN 218-346-3600
TrustCompass.com

109359-01



109359-03

109359-01



1" = 100'

Route
Boston Scientific TMO
City
Maple Grove
County
Hennepin
Filename
Boston Scientific TMO
Work Order #
109359



TRACKING

Staked By:	HF	6/20/23
Drafted By:	MRT	6/20/23
Project Manager	Jerrold Strode	218-347-3629
As-Built By:	-	-
Revision	-	-

GSOC
GOPHER STATE ONE CALL
1-800-252-1116
www.gopherstateonecall.org



109359-02

109359-01
100' COIL - 48F
#
Reel#

U-FOC-48
(2) 1.25" Ducts
UG Route: 793'

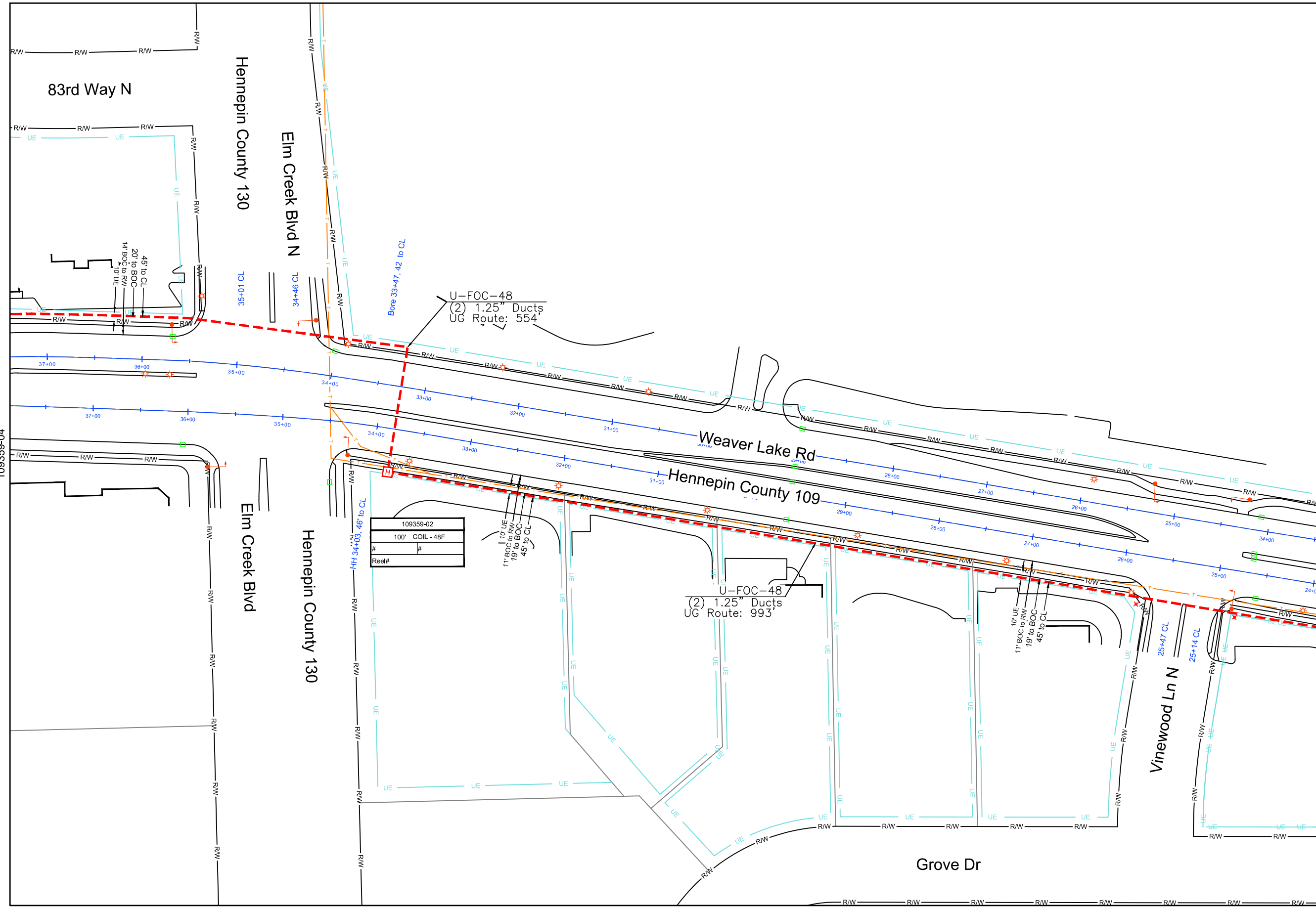
U-FOC-48
(2) 1.25" Ducts
UG Route: 598'

HH 15+96, 36' to CL

10' UE
27' BOC to R/W
12' to BOC
36' to CL

18' to BOC
45' to CL
11' BOC to R/W
10' UE

10' UE
26' BOC to R/W
11' to BOC
36' to CL



109359-04

109359-02



1" = 100'

Route	Boston Scientific TMO
City	Maple Grove
County	Hennepin
Filename	Boston Scientific TMO
Work Order #	109359

arvig

160 2nd St SW
 Perham, MN 56573
 (218) 346-5500

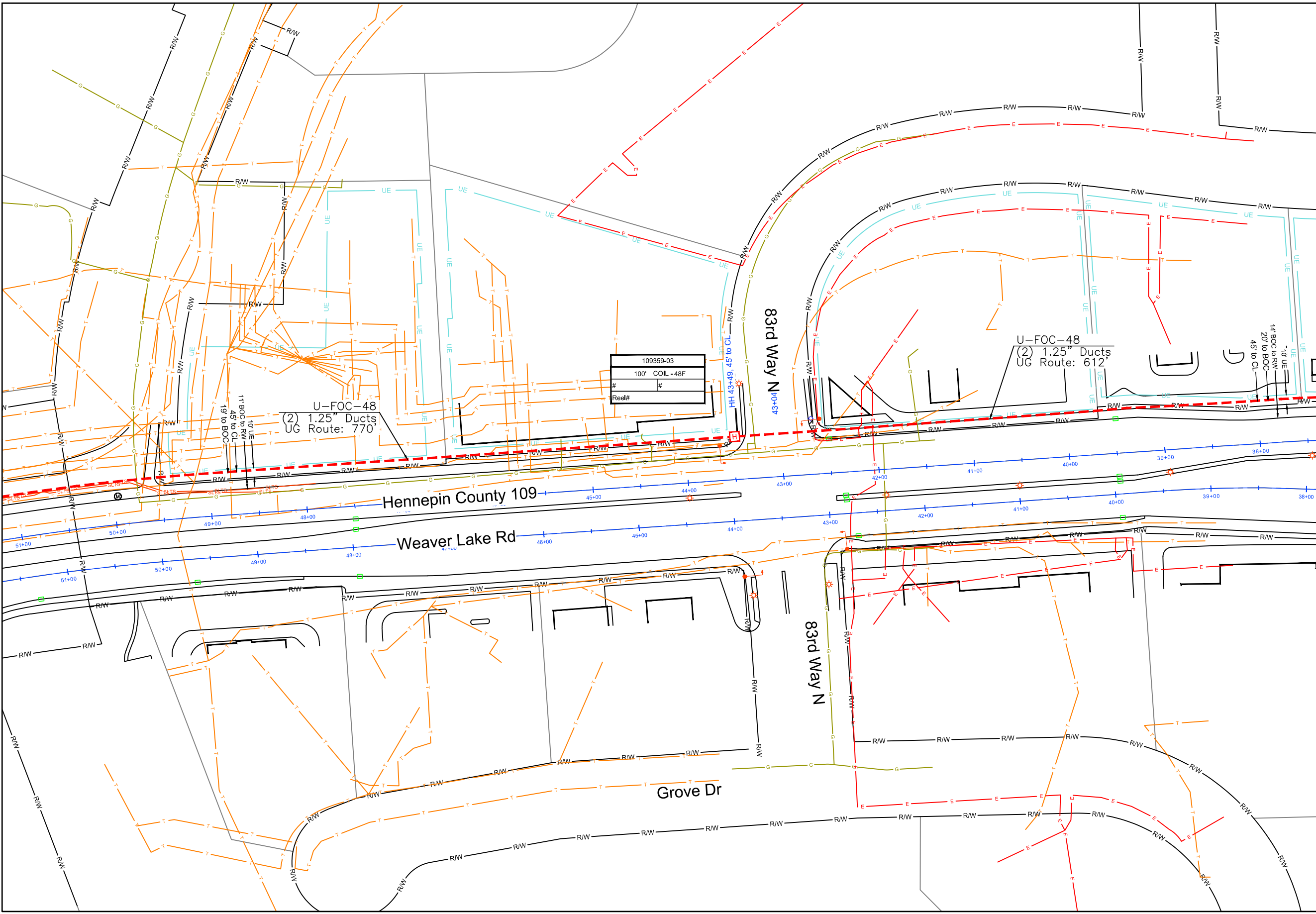
TRACKING	
Staked By:	HF 6/20/23
Drafted By:	MRT 6/20/23
Project Manager	Jerrold Strode 218-347-3629
As-Built By:	-
Revision	-

GSOC
 GOPHER STATE ONE CALL
 1-800-252-1116
 www.gopherstateonecall.org

Prepared by:

compass
 consultants inc.
 Perham, MN 218-346-3600
 TrustCompass.com

109359-03



109359-04

109359-02

109359-03	
100' COIL -48F	
#	#
Reel#	

U-FOC-48
(2) 1.25" Ducts
UG Route: 770'

U-FOC-48
(2) 1.25" Ducts
UG Route: 612'

Hennepin County 109

Weaver Lake Rd

83rd Way N

83rd Way N

Grove Dr



1" = 100'

Route	Boston Scientific TMO
City	Maple Grove
County	Hennepin
Filename	Boston Scientific TMO
Work Order #	109359

arvig

160 2nd St SW
Perham, MN 56573
(218) 346-5500

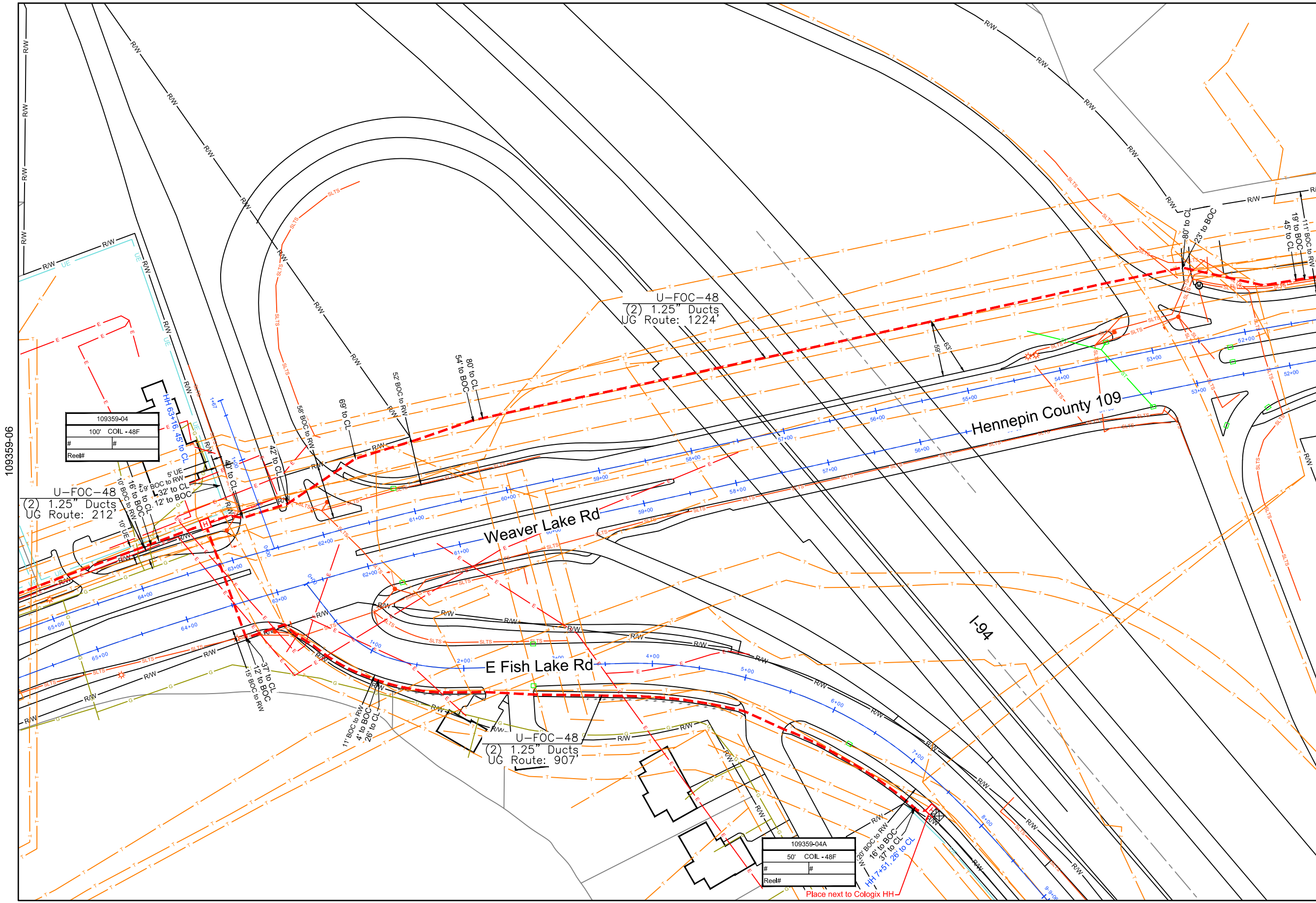
TRACKING	
Staked By:	HF 6/20/23
Drafted By:	MRT 6/20/23
Project Manager	Jerrod Strode 218-347-3629
As-Built By:	-
Revision	-

GSOC
GOPHER STATE ONE CALL
1-800-252-1116
www.gopherstateonecall.org

Prepared by:

compass
consultants inc.
Perham, MN 218-346-3600
TrustCompass.com

109359-03



109359-06

109359-04



1" = 100'

Route	Boston Scientific TMO
City	Maple Grove
County	Hennepin
Filename	Boston Scientific TMO
Work Order #	109359

arvig

160 2nd St SW
 Perham, MN 56573
 (218) 346-5500

TRACKING

Staked By:	HF	6/20/23
Drafted By:	MRT	6/20/23
Project Manager	Jerrold Strode	218-347-3629
As-Built By:	-	-
Revision	-	-

GSOC

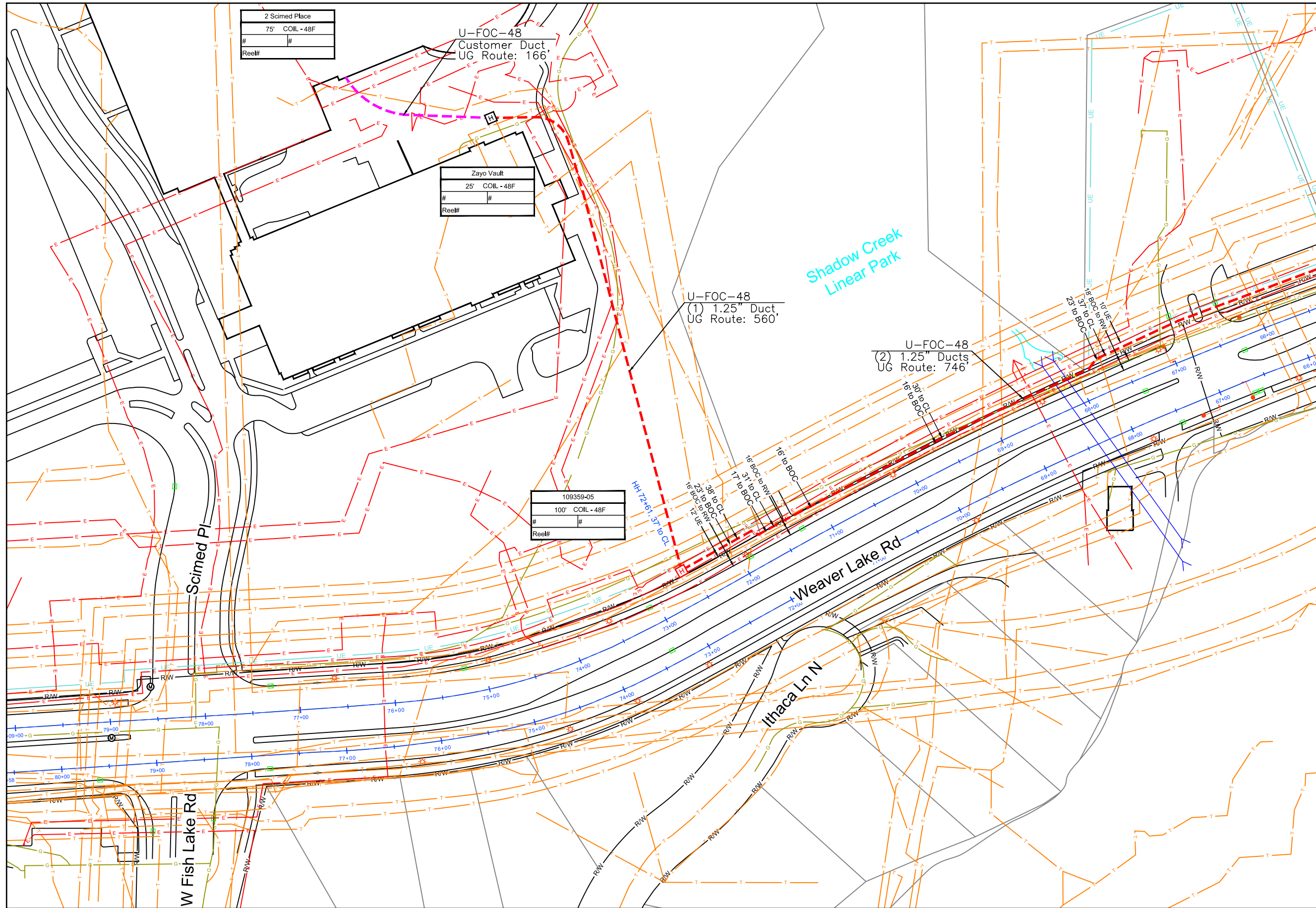
GOPHER STATE ONE CALL
 1-800-252-1116
 www.gopherstateonecall.org

Prepared by:

compass
 consultants inc.

Perham, MN 218-346-3600
 TrustCompass.com

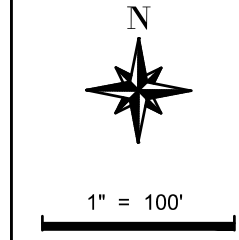
109359-05



2 Scimed Place	
75' COIL - 48F	
#	#
Reel#	

Zayo Vault	
25' COIL - 48F	
#	#
Reel#	

109359-05	
100' COIL - 48F	
#	#
Reel#	



Route	Boston Scientific TMO
City	Maple Grove
County	Hennepin
Filename	Boston Scientific TMO
Work Order #	109359

arvig

160 2nd St SW
Perham, MN 56573
(218) 346-5500

TRACKING	
Staked By:	HF 6/20/23
Drafted By:	MRT 6/20/23
Project Manager	Jerrold Strode 218-347-3629
As-Built By:	-
Revision	-

109359-05

GSOC
GOPHER STATE ONE CALL
1-800-252-1116
www.gopherstateonecall.org

Prepared by:

compass
consultants inc.
Perham, MN 218-346-3600
TrustCompass.com

109359-06

Date	From Vault	To Vault	Cable/Duct	Reel Number		Start #	End #	Total	Notes:		
Vault Size		Vault #	Ground Rod	Vault Size		Vault #	Ground Rod	Vault Size		Vault #	Ground Rod
	Vault				Vault				Vault		
	Vault				Vault				Vault		
	Vault				Vault				Vault		
	Vault				Vault				Vault		
Locate Post											
Fiber Marker											
Tracer Wire											



1" =

Route
Boston Scientific TMO

City
Maple Grove

County
Hennepin

Filename
Boston Scientific TMO

Work Order #
109359



160 2nd St SW
Perham, MN 56573
(218) 346-5500

TRACKING

Staked By:
HF 6/20/23

Drafted By:
MRT 6/20/23

Project Manager
Jerrod Strode 218-347-3629

As-Built By:
- -

Revision
- - -

GSOC

GOPHER STATE ONE CALL
1-800-252-1116
www.gopherstateonecall.org

Prepared by:



Perham, MN 218-346-3600
TrustCompass.com

Tally Sheet

FOR CONSTRUCTION USE ONLY