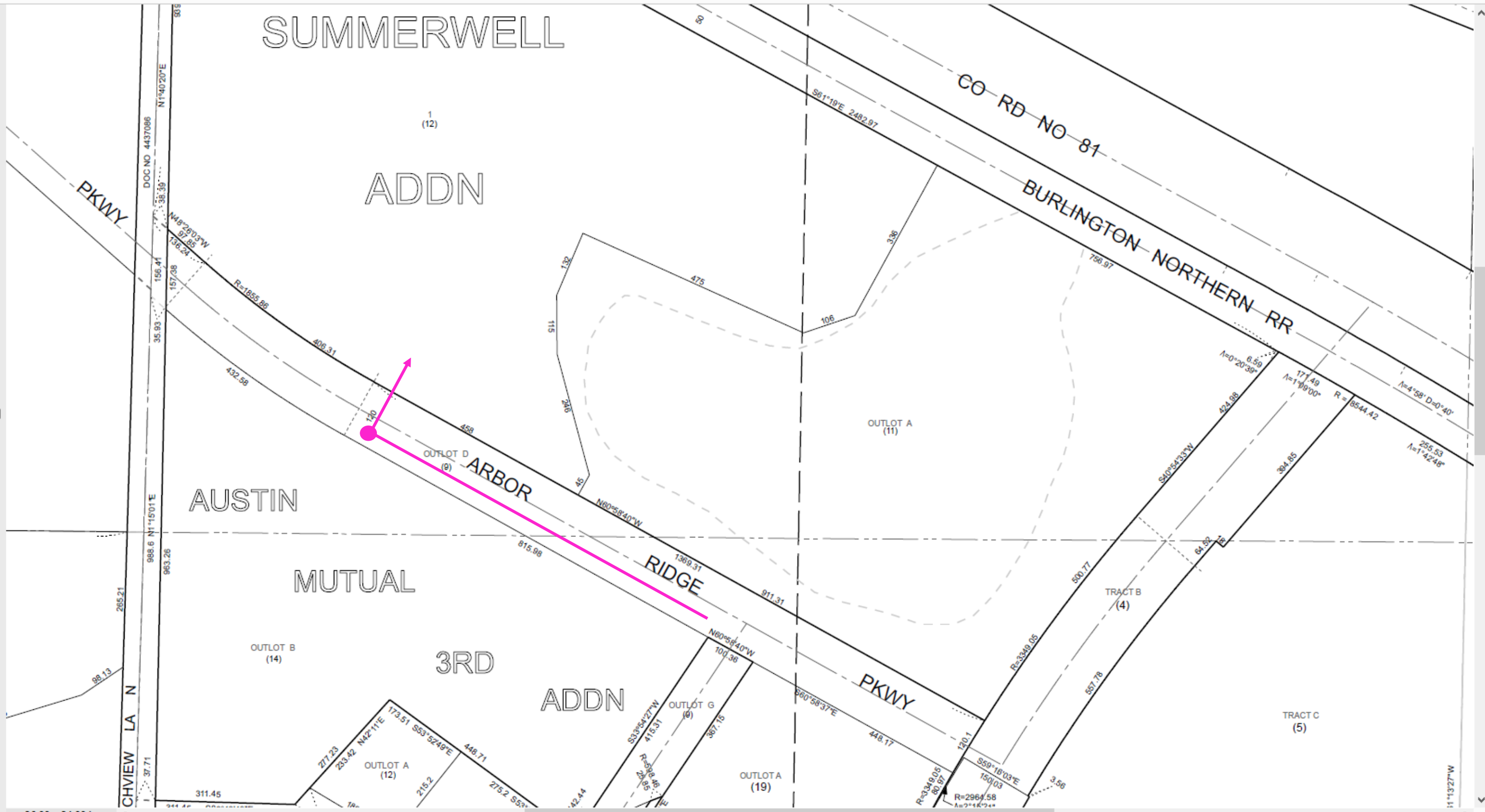


PLACE HANDHOLE AND PEDESTAL
AT 35' FROM CENTERLINE

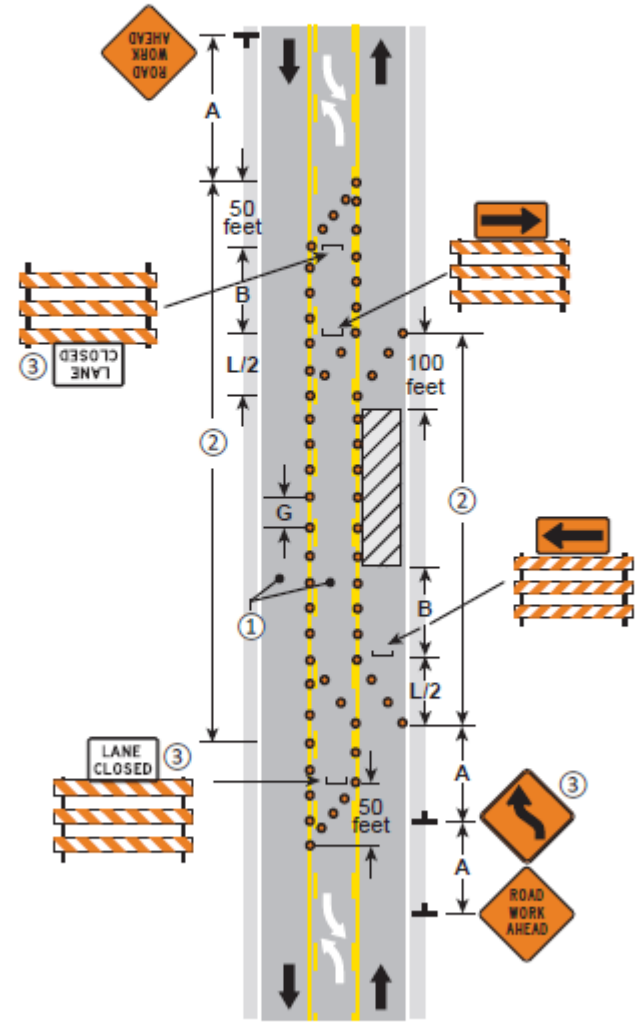
ENTER FIBER THROUGH
CUSTOMER HANDHOLE
AND CONDUIT TO 10339
ORCHID LANE N

PLACE FIBER IN INNERDUCT 35'
FROM CENTERLINE IN 120' ROW



NOTES:

- ① The minimum paved lane width from channelizing devices to edge of pavement or outside edge of paved shoulder or face of curb shall be 10 feet.
- ② Parking, stopping, and left turning movements may be prohibited along the work space and taper. Reduce spacing of channelizing devices as needed in order to prevent turns.
- ③ The LANE CLOSED sign and/or Reverse Curve sign may be omitted when the posted speed limit is 40 mph or less.



LANE CLOSURE - 3 Lane Section
TWO-WAY CONTINUOUS LEFT TURN LANE
 3 DAYS or LESS
 6K-38 LAYOUT 38

