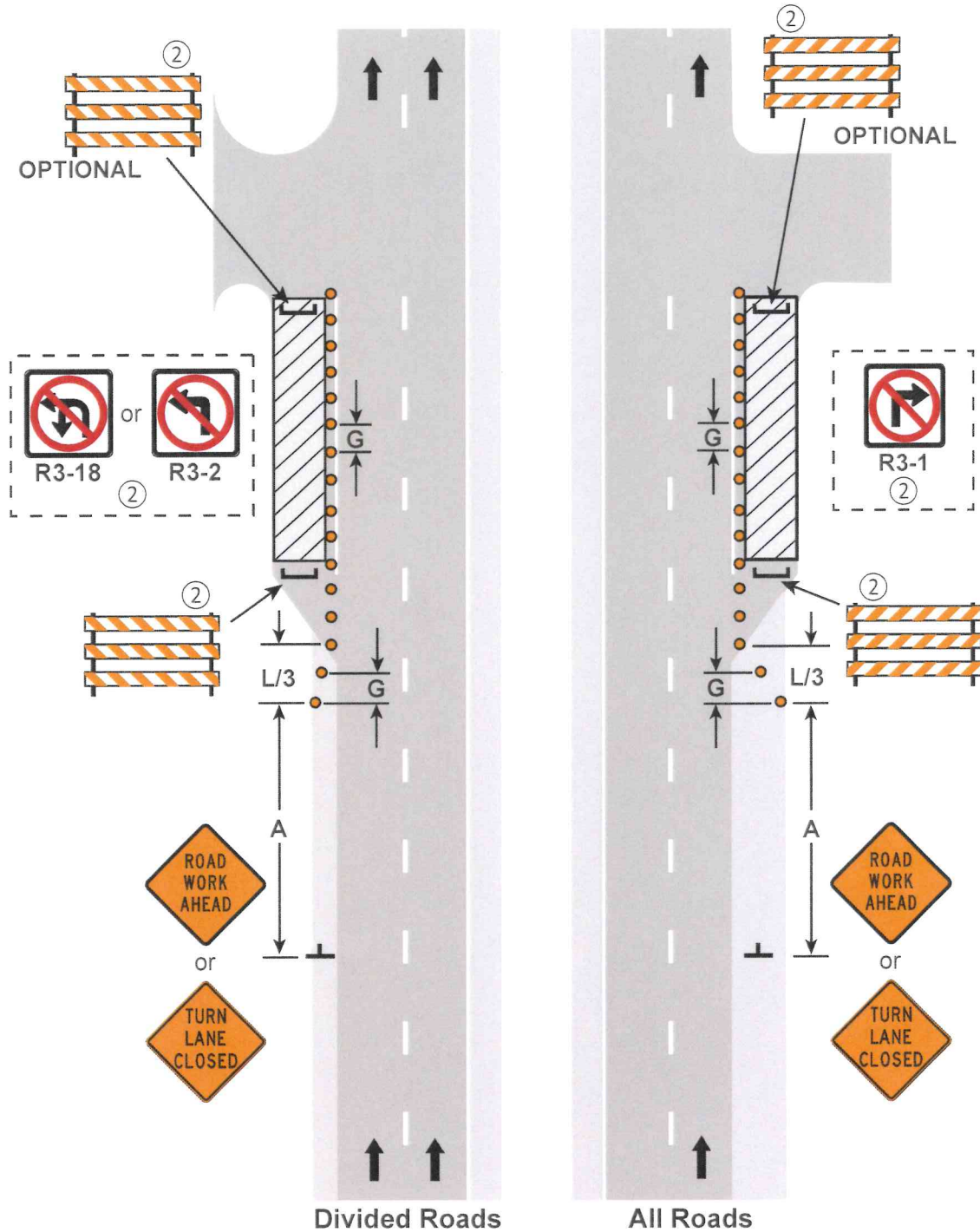


**NOTES:**

1. Contact the appropriate road authority for signal timing modifications before beginning work at any signalized intersection.
- ② Optional R3-1, R3-2, or R3-18 signs may be placed on sign stand or top of barricades on side closest to traffic. Signs are required if turns are prohibited.



**TURN LANE CLOSURES**

3 DAYS or LESS

6K-33

LAYOUT 33