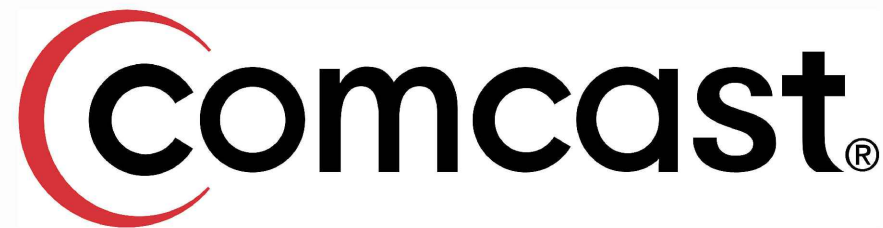




9938 STATE HWY 55 NW  
 ANNANDALE, MN 55302  
 320-963-2836  
[mike.laughlin-tr@consulttlr.us](mailto:mike.laughlin-tr@consulttlr.us)



## JB1337540 UNDERGROUND MAPLE GROVE, MN

### KEY

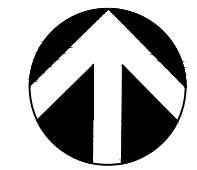
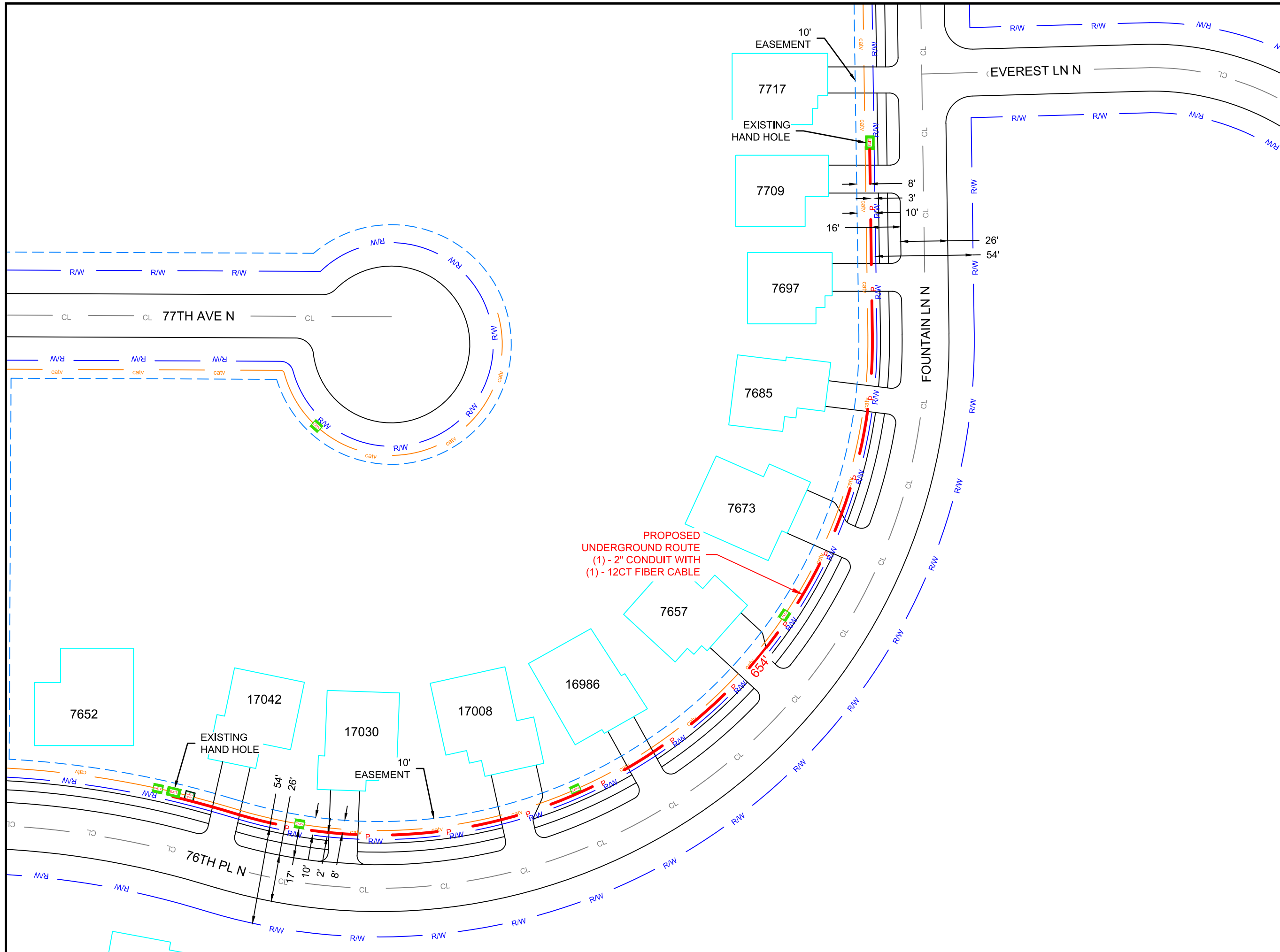
	MP PLAT EASEMENT
	TELEPHONE
	GAS MAIN
	U.G. POWER
	EXISTING UNDERGROUD
	EXISTING AERIAL POWER
	WATER MAIN
	SANITARY SEWER
	STORM SEWER
	STREET LIGHTS
	EXISTING FIBER
	PROPOSED ROUTE
	EDGE OF PAVEMENT
	CENTERLINE
	RIGHT OF WAY
	EXISTING FENCE
	RAILROAD TRACK
	GUARDRAIL
	UTILITY EASEMENT
	RETAINING WALL
	LANDSCAPE
	POND
	BUILDING

### LEGEND

<b>FOSW</b>	= FRONT OF SIDE-WALK
<b>BOC</b>	= BACK OF CURB
<b>EOP</b>	= EDGE OF PAVEMENT
<b>ORWL</b>	= OFF ROAD WHITE LINE
<b>EOGR</b>	= EDGE OF GRAVEL ROAD
<b>BPW</b>	= BACK OF WALL
<b>BOSW</b>	= BACK OF SIDE-WALK

### LEGEND

<b>VAULT</b> H.H. 30x48x36 SMALL H.H. <b>EXISTING</b> EXISTING H.H. EXISTING CATV EXISTING TEL EXISTING POWER NODE CABINET CATV POWER	<b>M &amp; P POLES</b> SIREN POLE POWER POLE TRANS POLE LIGHT POLE LIGHT POLE FLAG POLE POLE ANCHOR	<b>TRAFFIC CONTROL</b> TRAFFIC CONTROL TRAFFIC LIGHT TRAFFIC BUTTON STREET SIGN	<b>RXR CROSSING SIGN</b> RxR SIGNAL RxR CROSSING SIGN RxR CROSSING GATE	<b>MANHOLE</b> MANHOLE BASIN ROUND BASIN FIRE HYDRANT FIBER MARKER GAS MARKER SIGNAL M.H. TELEPHONE M.H. STEAM M.H. ELECTRICAL M.H. GAS M.H. WATER M.H. SAN SEWER M.H. STORM M.H. PUBLIC LIGHTING GAS VALVE WATER VALVE CULVERT
<b>GAS METER</b> GAS METER	<b>FIBER SPLICE</b> FIBER AE LOOP FIBER SPLICE FIBER NODE	<b>TREE</b> TREE TREE	<b>OBJECTS</b> CURB STOP PARKING METER BUS STOP TRASH BENCH STAKE DROP MAIL BOX MAIL BOX	
<b>ELEC. METER</b> ELEC. METER	<b>BOARD SIGN</b> BOARD SIGN ROAD CLOSED			



**NORTH**



1" = 50'



9938 STATE HWY 55 NW  
ANNANDALE, MN 55302  
320-963-2836  
[mike.laughlin-tlr@consulttlr.us](mailto:mike.laughlin-tlr@consulttlr.us)



THE LOCATIONS OF THE UTILITIES SHOWN ON THIS DRAWING ARE IN APPROXIMATE LOCATIONS. TLR CONSULTING INC. HEREBY DISCLAIMS ANY RESPONSIBILITY TO THIRD PARTIES FOR THE ACCURACY OF THIS INFORMATION. PERSONS WORKING IN THE AREA COVERED BY THIS DRAWING MUST CONTACT MINNESOTA'S GOPHER STATE ONE CALL SYSTEM TO ASCERTAIN THE LOCATION OF UNDERGROUND UTILITIES PRIOR TO PERFORMING ANY EXCAVATION.

DESIGN ENGINEER: MICHAEL LAUGHLIN  
DRAWN BY: GREG VUKELICH  
DATE: 06-13-2023

**PROJECT NUMBER:**  
**21112023E**

**PROJECT NAME:**  
JB1337540 UNDERGROUND  
MAPLE GROVE, MN

SECTION: TOWNSHIP: RANGE:  
29 119 22

**SHEET 1 OF 1**