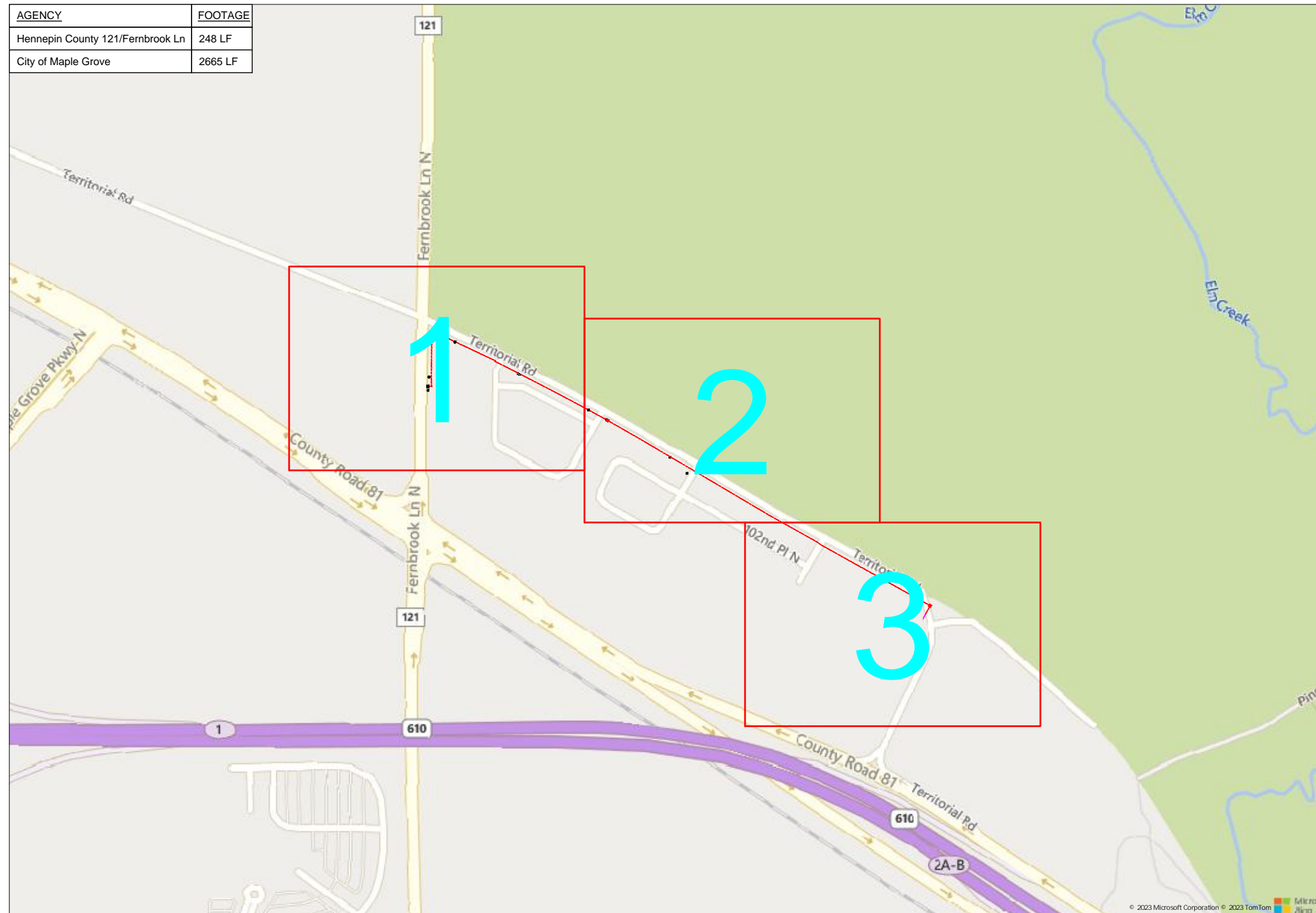


108673 US Internet Maple Grove

AGENCY	FOOTAGE
Hennepin County 121/Fernbrook Ln	248 LF
City of Maple Grove	2665 LF



13653 Territorial Road, Maple Grove, MN 55369



1" = -

Route	US Internet Maple Grove
City	Maple Grove, MN
County	Hennepin
Filename	US Internet Maple Grove
Work Order #	108673



160 2nd St SW
Perham, MN 56573
(218) 346-5500

TRACKING

Staked By:	HF	05/22/23
Drafted By:	AMB	06/07/23
Project Manager	Kelly Bard	763-270-6179
As-Built By:	-	-
Revision	-	-

Construction Totals	
Route Footage	2967'
Total Underground	2967'
Total Aerial	0'
Underground (New)	2946'
Aerial (New)	0'
Overpull (Ex Duct)	21'
Overlash (Ex Strand)	0'
Plow	0'
Bore	2946'
New Vaults	2
New Peds	0

GSOC
GOPHER STATE ONE CALL
1-800-252-1116
www.gopherstateonecall.org

Prepared by:
 compass consultants inc.
Perham, MN 218-346-3600
TrustCompass.com

OVERVIEW

Legend

Fiber Linetypes

	Proposed Underground Fiber - Bore
	Proposed Underground Fiber - Plow
	Proposed UG Fiber in Existing Duct
	Existing Underground Fiber
	Proposed Aerial Fiber
	Proposed Aerial Overlash
	Existing Aerial Fiber
	Proposed Aerial Strand
	Existing Aerial Strand

Other Linetypes

	Rail Road
	Fence
	Retaining Wall
	Storm Sewer
	Sanitary Sewer
	Gas Line
	Tele./Comm. Line
	Water Line
	Electric Line
	Street light/Traffic signal
	District Cooling
	District Heating
	Force Main
	Other Utility or Unknown
	Utility Easement

Abbreviations

- CL - Center Line
- R/W - Right of Way
- BOC - Back of Curb
- FC - Front of Curb
- EOR - Edge of Road
- S/W - Sidewalk
- HH - Handhole
- MH - Manhole
- PRT - Preterminated Cable
- PRG - Pigtail Cable

Symbols

	Proposed Handhole
	Existing Handhole
	Reference Handhole
	Manhole
	Proposed Cabinet
	Existing Cabinet
	Bore Pit
	Proposed Splice Point
	Existing Splice Point
	Power Pole
	Proposed Slack Coil
	Existing Slack Coil
	Proposed Anchor/Down Guy
	Existing Anchor/Down Guy
	Proposed Riser
	Existing Riser
	Aerial Bond
	Aerial Ground
	BM53T - Fiber Marker
	BM53 - Fiber Marker
	Proposed PED
	Existing PED
	Proposed Splice Case
	Existing Splice Case
	Street Light
	Traffic Light
	Transformer
	Hydrant
	Catch Basin
	Tree
	AMW - Main Enclosure - J-Box Needed
	AMW - Main Enclosure - No J-Box Needed
	AMW - Stack Enclosure

Materials	
48 Fiber	3357
1 X 1.25" Duct	45
2 X 1.25" Duct	2901
Vault (24x30)	2
Ground Rod - 8'	2



1" = -

Route	US Internet Maple Grove
City	Maple Grove, MN
County	Hennepin
Filename	US Internet Maple Grove
Work Order #	108673

160 2nd St SW
Perham, MN 56573
(218) 346-5500

TRACKING	
Staked By:	HF 05/22/23
Drafted By:	AMB 06/07/23
Project Manager	Kelly Bard 763-270-6179
As-Built By:	-
Revision	-

Construction Totals	
Route Footage	2967'
Total Underground	2967'
Total Aerial	0'
Underground (New)	2946'
Aerial (New)	0'
Overpull (Ex Duct)	21'
Overlash (Ex Strand)	0'
Plow	0'
Bore	2946'
New Vaults	2
New Peds	0

GSOC
GOPHER STATE ONE CALL
1-800-252-1116
www.gopherstateonecall.org

Prepared by:
 compass consultants inc.
Perham, MN 218-346-3600
TrustCompass.com

LEGEND

Existing Access Points



97373-01



97373-01



1" = -

Route
US Internet Maple Grove
City
Maple Grove, MN
County
Hennepin
Filename
US Internet Maple Grove
Work Order #
108673



160 2nd St SW
Perham, MN 56573
(218) 346-5500

TRACKING

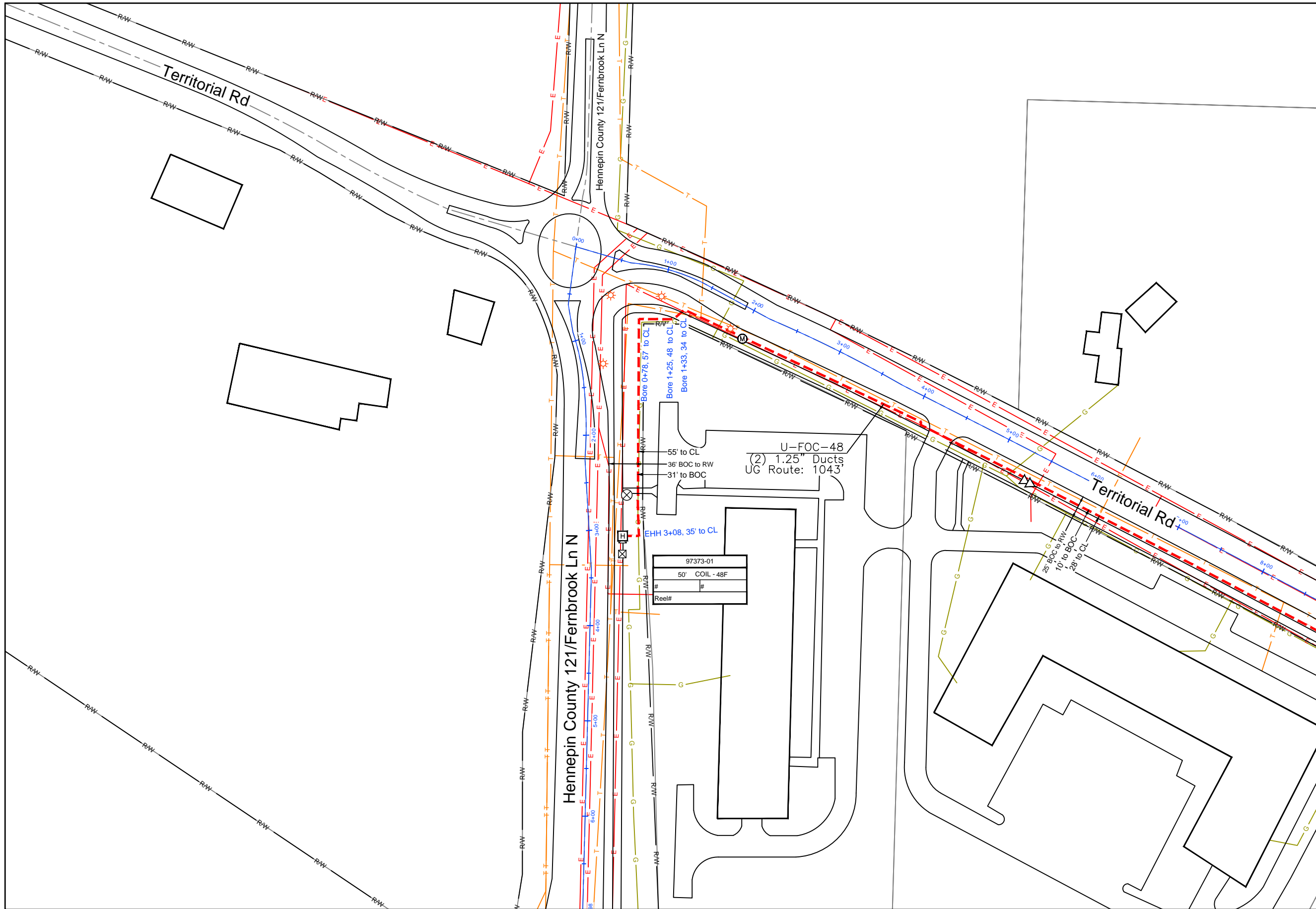
Staked By:
HF 05/22/23
Drafted By:
AMB 06/07/23
Project Manager
Kelly Bard 763-270-6179
As-Built By:
- -
Revision
- -

GSOC

GOPHER STATE ONE CALL
1-800-252-1116
www.gopherstateonecall.org

Prepared by:
 compass consultants inc.
Perham, MN 218-346-3600
TrustCompass.com

EXISTING AP



108673-02



1" = 100'

Route
US Internet Maple Grove
City
Maple Grove, MN
County
Hennepin
Filename
US Internet Maple Grove
Work Order #
108673

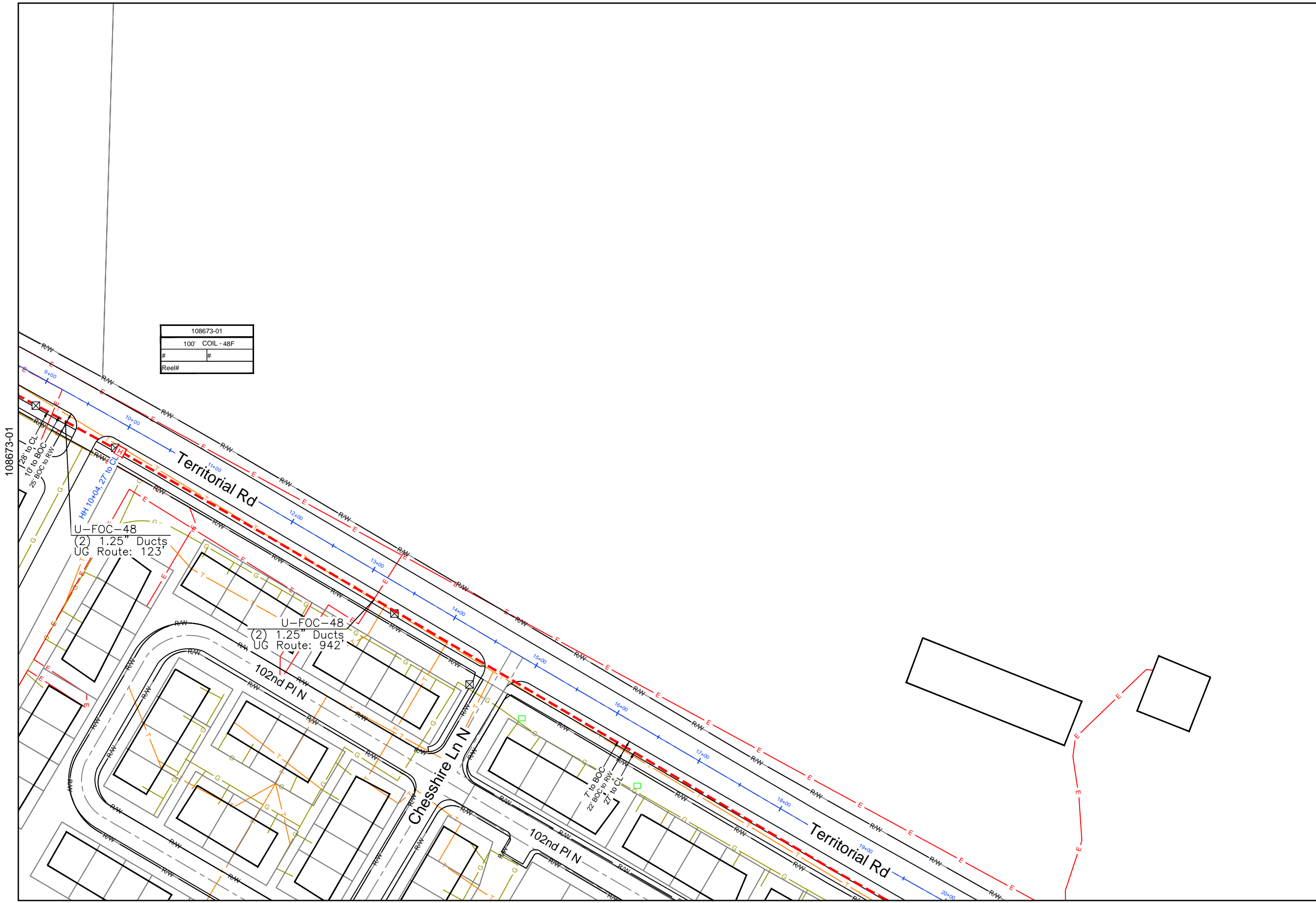
arvig
160 2nd St SW
Perham, MN 56573
(218) 346-5500

TRACKING	
Staked By:	HF 05/22/23
Drafted By:	AMB 06/07/23
Project Manager	Kelly Bard 763-270-6179
As-Built By:	-
Revision	-

GSOC
GOPHER STATE ONE CALL
1-800-252-1116
www.gopherstateonecall.org

Prepared by:
compass
consultants inc.
Perham, MN 218-346-3600
TrustCompass.com

108673-01



108673-01
100' COIL - 48F
#
Reel#

108673-01

108673-03



1" = 100'

Route	US Internet Maple Grove
City	Maple Grove, MN
County	Hennepin
Filename	US Internet Maple Grove
Work Order #	108673



160 2nd St SW
Perham, MN 56573
(218) 346-5500

TRACKING

Staked By:	HF	05/22/23
Drafted By:	AMB	06/07/23
Project Manager	Kelly Bard	763-270-6179
As-Built By:	-	-
Revision	-	-

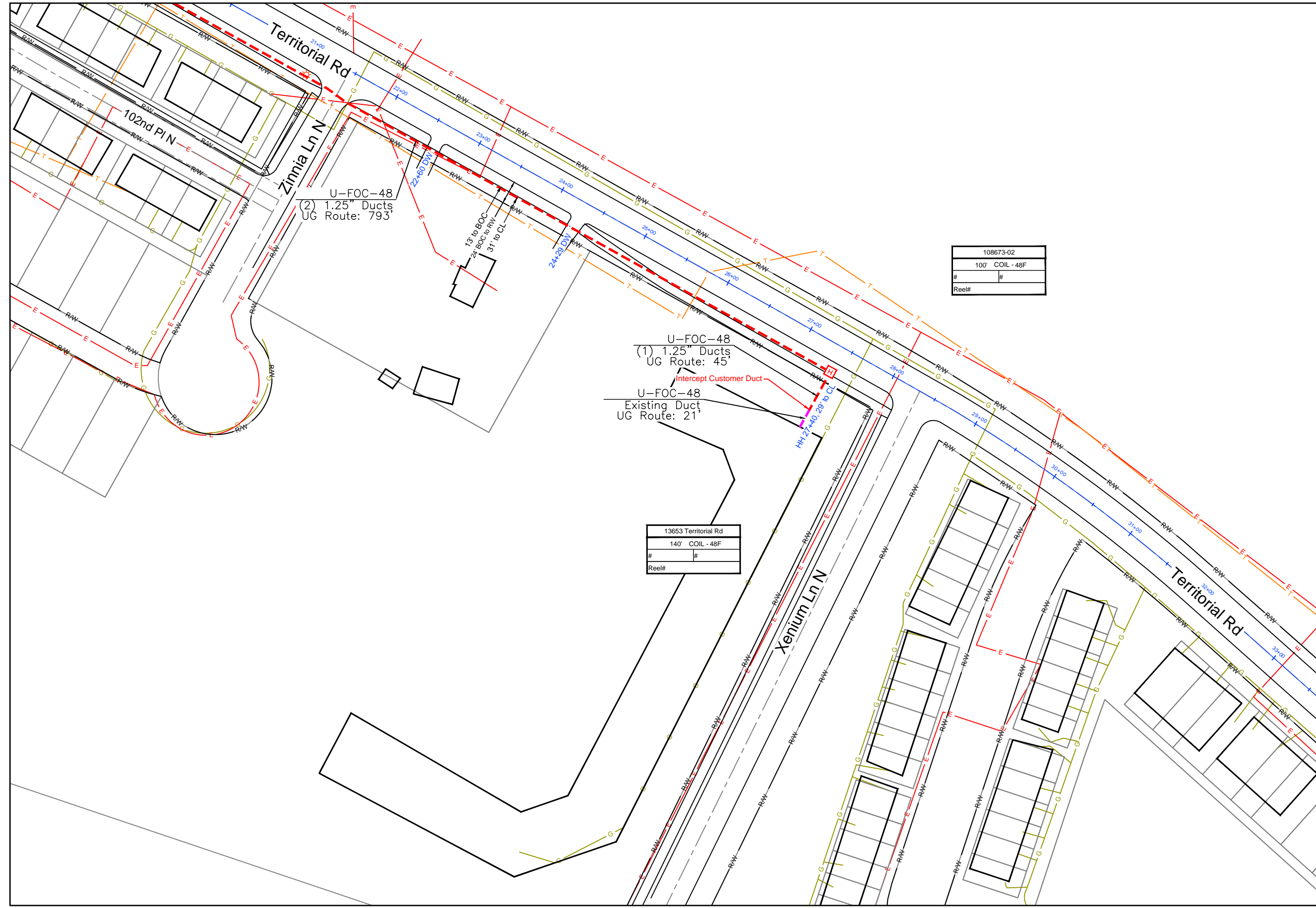
GSOC

GOPHER STATE ONE CALL
1-800-252-1116
www.gopherstateonecall.org



Perham, MN 218-346-3600
TrustCompass.com

108673-02



U-FOC-48
(2) 1.25" Ducts
UG Route: 793'

U-FOC-48
(1) 1.25" Ducts
UG Route: 45'
Intercept Customer Duct
U-FOC-48
Existing Duct
UG Route: 21'

13653 Territorial Rd	
#	#
Reel#	

108673-02	
100' COIL - 48F	
#	#
Reel#	



1" = 100'

Route	US Internet Maple Grove
City	Maple Grove, MN
County	Hennepin
Filename	US Internet Maple Grove
Work Order #	108673

arvig

160 2nd St SW
Perham, MN 56573
(218) 346-5500

TRACKING	
Staked By:	HF 05/22/23
Drafted By:	AMB 06/07/23
Project Manager	Kelly Bard 763-270-6179
As-Built By:	-
Revision	-

GSOC
GOPHER STATE ONE CALL
1-800-252-1116
www.gopherstateonecall.org

Prepared by:

compass
consultants inc.
Perham, MN 218-346-3600
TrustCompass.com

