

MCI metro

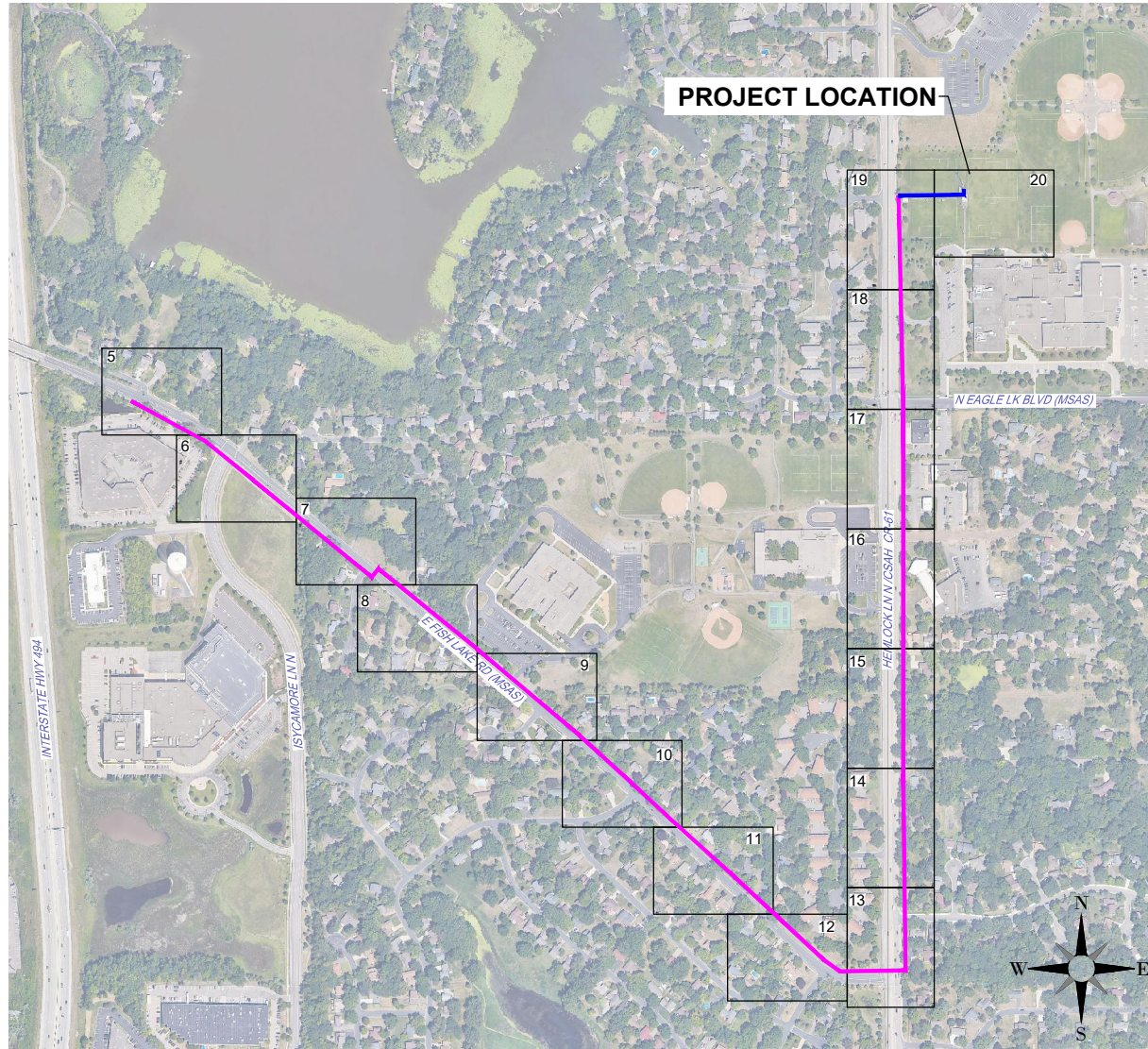
124289_MIN JADE_2211BWPJ_5.11.23



MAPLE GROVE, MN

ISSUED FOR PERMITTING

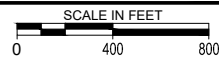
ISG PROJECT # 23-28349



MAP LEGEND:

- UNDERGROUND
- AERIAL
- OVERPULL

LOCATION MAP



SHEET INDEX

- 1 TITLE
- 2 LEGEND
- 3 CONTACT SHEET
- 4 GENERAL NOTES
- 5-20 PLAN SHEETS

PERMITS

PERMIT #	DESCRIPTION	SHEET	QUANTITY
PERMIT 1	CITY OF MAPLE GROVE	5-13	4,380'
PERMIT 2	HENNEPIN COUNTY	13-19	4,041'

GIS DISCLAIMER:
 INFORMATION FOR THE BOUNDARY / LOT LINES, AND UNDERGROUND UTILITIES SHOWN WAS DERIVED FROM DIGITAL DATABASES AND IS FOR INFORMATIONAL PURPOSES ONLY. DATA MAY NOT HAVE BEEN PREPARED FOR, OR BE SUITABLE FOR: LEGAL, ENGINEERING, OR SURVEYING PURPOSES.

PROJECT GENERAL NOTES

- ALL WORK SHALL CONFORM TO THE CONTRACT DOCUMENTS, WHICH INCLUDE, BUT ARE NOT LIMITED TO, THE OWNER - CONTRACTOR AGREEMENT, THE PROJECT MANUAL (WHICH INCLUDES GENERAL SUPPLEMENTARY CONDITIONS AND SPECIFICATIONS), DRAWINGS OF ALL DISCIPLINES AND ALL ADDENDA, MODIFICATIONS AND CLARIFICATIONS ISSUED BY THE ARCHITECT/ENGINEER.
- CONTRACT DOCUMENTS SHALL BE ISSUED TO ALL SUBCONTRACTORS BY THE GENERAL CONTRACTOR IN COMPLETE SETS IN ORDER TO ACHIEVE THE FULL EXTENT AND COMPLETE COORDINATION OF ALL WORK.
- WRITTEN DIMENSIONS TAKE PRECEDENCE OVER SCALED DIMENSIONS. NOTIFY ARCHITECT/ENGINEER OF ANY DISCREPANCIES OR CONDITIONS REQUIRING INFORMATION OR CLARIFICATION BEFORE PROCEEDING WITH THE WORK.
- FIELD VERIFY ALL EXISTING CONDITIONS AND DIMENSIONS. NOTIFY ARCHITECT/ENGINEER OF ANY DISCREPANCIES OR CONDITIONS REQUIRING INFORMATION OR CLARIFICATION BEFORE PROCEEDING WITH THE WORK.
- DETAILS SHOWN ARE INTENDED TO BE INDICATIVE OF THE PROFILES AND TYPE OF DETAILING REQUIRED THROUGHOUT THE WORK. DETAILS NOT SHOWN ARE SIMILAR IN CHARACTER TO DETAILS SHOWN. WHERE SPECIFIC DIMENSIONS, DETAILS OR DESIGN INTENT CANNOT BE DETERMINED, NOTIFY ARCHITECT/ENGINEER BEFORE PROCEEDING WITH THE WORK.
- ALL MANUFACTURED ARTICLES, MATERIALS AND EQUIPMENT SHALL BE APPLIED, INSTALLED, CONNECTED, ERECTED, CLEANED AND CONDITIONED ACCORDING TO MANUFACTURERS' INSTRUCTIONS. IN CASE OF DISCREPANCIES BETWEEN MANUFACTURERS' INSTRUCTIONS AND THE CONTRACT DOCUMENTS, NOTIFY ARCHITECT/ENGINEER BEFORE PROCEEDING WITH THE WORK.
- ALL DISSIMILAR METALS SHALL BE EFFECTIVELY ISOLATED FROM EACH OTHER TO AVOID GALVANIC CORROSION.
- THE LOCATION AND TYPE OF ALL INPLACE UTILITIES SHOWN ON THE PLANS ARE FOR GENERAL INFORMATION ONLY AND ARE ACCURATE AND COMPLETE TO THE BEST OF THE KNOWLEDGE OF I & S GROUP, INC. (ISG). NO WARRANTY OR GUARANTEE IS IMPLIED. THE CONTRACTOR SHALL VERIFY THE SIZES, LOCATIONS AND ELEVATIONS OF ALL INPLACE UTILITIES PRIOR TO CONSTRUCTION. CONTRACTOR SHALL IMMEDIATELY NOTIFY ENGINEER OF ANY DISCREPANCIES OR VARIATIONS FROM PLAN.
- THE CONTRACTOR IS TO CONTACT "GOPHER STATE ONE CALL" FOR UTILITY LOCATIONS, MINIMUM 2 BUSINESS DAYS PRIOR TO ANY EXCAVATION / CONSTRUCTION (1-800-252-1166).



THIS DOCUMENT IS THE PROPERTY OF I & S GROUP, INC. AND MAY NOT BE USED, COPIED OR DUPLICATED WITHOUT PRIOR WRITTEN CONSENT.

PROJECT
MIN JADE

MAPLE GROVE MN

REVISION SCHEDULE		
DATE	DESCRIPTION	BY
5/11/23	PLANS UPDATED PER ROUTE CHANGE	JK

PROJECT NO.	23-28349
FILE NAME	28349-UTILITY-R
DRAWN BY	CB
DESIGNED BY	CB
REVIEWED BY	KV
ORIGINAL ISSUE DATE	02/07/23
CLIENT PROJECT NO.	124289

PROJECT INDEX:

OWNER:
 MCI metro
 ACCESS TRANSMISSION
 SERVICES CORP D/B/A VERIZON
 ACCESS TRANSMISSION
 OUTSIDE PLANT CONSTRUCTION

PROJECT ADDRESS / LOCATION:
 S26 T119N R22W
 7000 HEMLOCK LN N
 MAPLE GROVE, MN 55369
 LATITUDE: 45.08178288530477
 LONGITUDE: -93.4290661937941

MANAGING OFFICE:

 BLOOMINGTON OFFICE
 7900 INTERNATIONAL DRIVE
 SUITE 550
 MINNEAPOLIS, MN 55425
 PHONE: 952.426.0699
 PROJECT MANAGER: JAKE JORDAN
 EMAIL: jake.jordan@ISGinc.com

TITLE
TITLE

SHEET
1 OF 20



THIS DOCUMENT IS THE PROPERTY OF I & S GROUP, INC. AND MAY NOT BE USED, COPIED OR DUPLICATED WITHOUT PRIOR WRITTEN CONSENT.

PROJECT

MIN JADE

MAPLE GROVE MN

REVISION SCHEDULE		
DATE	DESCRIPTION	BY
5/11/23	PLANS UPDATED PER ROUTE CHANGE	JK

PROJECT NO.	23-28349
FILE NAME	28349-UTILITY-R
DRAWN BY	CB
DESIGNED BY	CB
REVIEWED BY	KV
ORIGINAL ISSUE DATE	02/07/23
CLIENT PROJECT NO.	124289

TITLE

LEGENDS-NOTES

SHEET

ABBREVIATIONS			
AC	ACRE	INV	INVERT
ADA	AMERICANS WITH DISABILITIES ACT	IP	IRON PIPE
ADD	ADDENDUM	IPS	IRON PIPE SIZE
AFF	ABOVE FINISHED FLOOR	J-BOX	JUNCTION BOX
AGG	AGGREGATE	JT	JOINT
APPROX	APPROXIMATE	LF	LINEAR FEET
ARCH	ARCHITECT, ARCHITECTURAL	LIN	LINEAR
BFE	BASEMENT FLOOR ELEVATION	LPS	LOW PRESSURE STEAM
BIT	BITUMINOUS	LS	LUMP SUM
CAD	COMPUTER-AIDED DESIGN	LSO	LOWEST STRUCTURAL OPENING
CB	CATCH BASIN	MAX	MAXIMUM
CFS	CUBIC FEET PER SECOND	MB	MAIL BOX
CF	CUBIC FOOT	MECH	MECHANICAL
CI	CAST IRON	MH	MANHOLE
CIP	CAST IRON PIPE	MIN	MINIMUM
CIPC	CAST IN PLACE CONCRETE	MISC	MISCELLANEOUS
CJ	CONTROL JOINT	NO	NUMBER
CL	CENTERLINE	NTS	NOT TO SCALE
CMP	CORRUGATED METAL PIPE	NWL	NORMAL WATER LEVEL
CO	CLEANOUT	OC	ON CENTER
CONC	CONCRETE	OCEW	ON CENTER EACH WAY
CONST	CONSTRUCTION	OH	OVERHEAD
CONT	CONTINUOUS	OHD	OVERHEAD DOOR
CY	CUBIC YARD	OZ	OUNCE
C&G	CURB AND GUTTER	PED	PEDESTAL, PEDESTRIAN
DEMO	DEMOLITION	PERF	PERFORATED
DIA	DIAMETER	PL	PROPERTY LINE
DIM	DIMENSION	PP	POLYPROPYLENE
DS	DOWNSPOUT	PSI	POUNDS PER SQUARE INCH
EA	EACH	PVC	POLYVINYL CHLORIDE
ELEC	ELECTRICAL	PVMT	PAVEMENT
ELEV	ELEVATION	QTY	QUANTITY
EOF	EMERGENCY OVERFLOW	RAD	RADIUS
EQ	EQUAL	RCP	REINFORCED CONCRETE PIPE
EX	EXISTING	RD	ROOF DRAIN
FDC	FIRE DEPARTMENT CONNECTION	REBAR	REINFORCING BAR
FDN	FOUNDATION	REM	REMOVE
FFE	FINISHED FLOOR ELEVATION	ROW	RIGHT OF WAY
FPM	FEET PER MINUTE	R/W	RIGHT OF WAY
FPS	FEET PER SECOND	SAN	SANITARY
FT	FOOT, FEET	SCH	SCHEDULE
FTG	FOOTING	SF	SQUARE FOOT
GA	GAUGE	SPEC	SPECIFICATION
GAL	GALLON	SQ	SQUARE
GALV	GALVANIZED	STA	STATION
GC	GENERAL CONTRACTOR	SY	SQUARE YARD
GFE	GARAGE FLOOR ELEVATION	T/C	TOP OF CURB
GL	GUTTER LINE	TEL	TELEPHONE
GPM	GALLONS PER MINUTE	TEMP	TEMPORARY
GV	GATE VALVE	THRU	THROUGH
HDPE	HIGH DENSITY POLYETHYLENE	TNFH	TOP NUT OF FIRE HYDRANT
HD	HEAVY DUTY	TRANS	TRANSFORMER
HH	HANDHOLE	TV	TELEVISION
HORIZ	HORIZONTAL	T/W	TOP OF WALL
HR	HOUR	TYP	TYPICAL
HWL	HIGH WATER LEVEL	UT	UTILITY, UNDERGROUND TELEPHONE
HWY	HIGHWAY	VCP	VITRIFIED CLAY PIPE
HYD	HYDRANT	W/O	WITHOUT
I	INVERT	W/	WITH
ID	INSIDE DIAMETER	YD	YARD
IN	INCH	YR	YEAR

LINETYPE LEGEND			
EXISTING		PROPOSED	
SS	DIRECTIONAL BORE	BORE	
SAN	STORM DRAIN	SS	
W	SANITARY SEWER	SAN	
G	WATER MAIN	W	
OH	GAS	G	
E	OVERHEAD UTILITY	OH	
T	UNDERGROUND ELECTRIC	E	
TV	UNDERGROUND TELEPHONE	T	
FO	UNDERGROUND TV	TV	
SL/TC	UNDERGROUND FIBER OPTIC	FO	
WET	STREET LIGHT/TRAFFIC CONTROL CONDUIT	WET	
W-1	WETLAND	WET	
S-1	WATER EDGE		
X-X	WETLAND POLYGON		
PL	WATERWAY POLYGON		
RW	FENCE LINE	X-X	
EOP	PROPERTY / LOT LINE	PL	
EOG	RIGHT OF WAY LINE	EOP	
FOC	EDGE OF PAVEMENT	EOG	
et	EDGE OF GRAVEL	FOC	
	FACE OF CURB	et	
	CENTERLINE		
	EDGE OF BUILDING		
	GUARD RAIL		
	ACCESS CONTROL		
	EASEMENT LINE		
-100-	CONTOURS (MAJOR)	-100-	
-101-	CONTOURS (MINOR)	-101-	

NOTE: CONTRACTOR SHALL FIELD VERIFY THE LOCATIONS OF ALL EXISTING UTILITIES.

SYMBOL LEGEND			
EXISTING		PROPOSED	
SS, SAN, W, G, E, T, TV, FO	MANHOLE		
EX CB	STORM INLET		
EX CO	STORM CLEANOUT		
	STORM CULVERT		
	BOX CULVERT		
EX CO	SANITARY CLEANOUT		
M	WATER VALVE		
	WELL		
EX HYD	HYDRANT		
	UTILITY POLE		
	LIGHT POLE		
	DOWN GUY + ANCHOR		
	GROUND		
	AERIAL SLACK LOOP		
	SLACK COIL		
	SPLICE POINT		
	TRANSFORMER		
E, C, T, F	UTILITY PED/CABINET		
HH	HANDHOLE		
	ELECTRIC METER		
	AIR CONDITIONER		
	GAS METER		
GV	GAS VALVE		
	CELL TOWER		
EX SIGNAL	TRAFFIC SIGNAL / LIGHT		
	UTILITY WARNING MARKER		
	RIGHT-OF-WAY MARKER		
	SIGN		
	STREET SIGN		
RR	RAILROAD CROSSING SIGN		
	BORE PIT		
	SIDEWALK OR PAVEMENT REMOVAL		
	DECIDUOUS TREE		
	CONIFEROUS TREE		
	BUSH		
	WETLAND / MARSH		
	ROCK		

NOTE: CONTRACTOR SHALL FIELD VERIFY THE LOCATIONS OF ALL EXISTING UTILITIES.

VERIZON BUSINESS

OUTSIDE PLANT ENGINEERING:

PROJECT ENGINEER:

ANDY FRETTE
1200 WASHINGTON AVE (612) 919-1751
MINNEAPOLIS, MN 55401

SENIOR PROJECT ENGINEER:

DAN SCHMIDT
1200 WASHINGTON AVE (612) 221-7997
MINNEAPOLIS, MN 55401

ENGINEERING CONTRACTOR:

NAME OF FIRM: ISG INC.

JAKE JORDAN
7900 INTERNATIONAL DR. SUITE 550 (612) 598-1058
BLOOMINGTON, MN 55425

CONSTRUCTION CONTRACTOR:

NAME OF FIRM: COMLINK SOLUTIONS

MONA ROULAINÉ
2415 ANNAPOLIS LN N. SUITE 140 (651) 329-8403
PLYMOUTH, MN 55441

UTILITIES

COMPANY NAME	MARKING CONCERNS	DAMAGE
ARVIG	(218) 346-5500	(218) 346-5500
AT&T TRANSMISSION	(866) 460-6324	(866) 460-6324
COMCAST	(800) 778-9140	(651) 493-5143
CITY OF MAPLE GROVE	(763) 494-6370	(763) 494-6370
CENTURYLINK - CTQL	(800) 778-9140	(303) 260-4929
HENNEPIN COUNTY PUBLIC WORKS	(406) 541-9571	(612) 596-0339
MCI	(800) 624-9675	(800) 624-9675
CENTER POINT ENERGY	(812) 483-7923	(612) 321-5200
OSSEO AREA SCHOOLS	(218) 346-5500	(218) 346-5500
LEVEL 3 IS NOW CENTURYLINK	(877) 366-8344	(877) 366-8344
WRIGHT HENNEPIN COOP	(800) 778-9140	(763) 477-3100
ZAYO BANDWIDTH	(800) 961-6500	(800) 961-6500

CITY GOVERNMENT

CITY OF MAPLE GROVE

Public Works Department
9030 Forestview Lane
Maple Grove, MN 55369
P: 763-494-6370
publicworks@maplegrovern.gov

Engineering Department
12800 Arbor Lakes Parkway N
Maple Grove, MN 55369
P: 763-494-6350
engineering@maplegrovern.gov

COUNTY GOVERNMENT

HENNEPIN COUNTY

3650 Fremont Ave N,
Minneapolis, MN 55412
roadpermits@hennepin.us
Phone: 612-596-0339

STATE GOVERNMENT

MINNESOTA DEPARTMENT OF
TRANSPORTATION
ANN DRIVER
UTILITY PERMITS
MAILSTOP 678
395 JOHN IRELAND BLVD
SAINT PAUL, MN 55155
ann.driver@state.mn.us



THIS DOCUMENT IS THE PROPERTY OF I & S GROUP, INC. AND MAY NOT BE USED, COPIED OR DUPLICATED WITHOUT PRIOR WRITTEN CONSENT.

PROJECT

MIN JADE

MAPLE GROVE MN

REVISION SCHEDULE		
DATE	DESCRIPTION	BY
5/11/23	PLANS UPDATED PER ROUTE CHANGE	JK

PROJECT NO.	23-28349
FILE NAME	28349-UTILITY-R
DRAWN BY	CB
DESIGNED BY	CB
REVIEWED BY	KV
ORIGINAL ISSUE DATE	02/07/23
CLIENT PROJECT NO.	124289

TITLE

PROJECT CONTACTS

SHEET

3

OF 20

GENERAL CONSTRUCTION NOTES:

1. CONSTRUCTION PERMITS OR NOTIFICATIONS HAVE BEEN COMPLETED OR APPLIED FOR BY ISG.
2. ANY ADJACENT AREAS DAMAGED DURING CONSTRUCTION MUST BE RESTORED TO THEIR ORIGINAL CONDITION.
3. THE CONTRACTOR SHALL PROTECT EXISTING PROPERTY IRONS DURING CONSTRUCTION AND RESET BY A LICENSED LAND SURVEYOR IF DISTURBED.
4. ROUTE DEVIATIONS SHALL NOT BE ALLOWED WITHOUT CONCURRENCE OF DESIGNER.
5. BRUSHING AND TREE REMOVAL IS THE RESPONSIBILITY OF THE CONTRACTOR WITH THE FOLLOWING CONDITIONS:
-ALL BRUSH AND TREES ARE TO BE REMOVED AND DISPOSED OF BY THE CONTRACTOR.
6. ALL ROCKS TURNED UP DURING PLACEMENT MUST BE REMOVED BY CONTRACTOR OR PLACED BACK IN TRENCH DURING RESTORATION SO AS NOT TO CAUSE A HAZARD FOR VEHICLE OR FOOT TRAVEL.
7. ALL ABRUPT CHANGES IN GRADE SUCH AS BERMS AND DITCHES SHALL BE GRADUALLY SLOPED AND RESTORED TO THEIR NATURAL STATE.
8. UNLESS OTHERWISE SPECIFIED BY THE DESIGNER, THE CABLE PLACING DEPTHS ARE:

FIBER OPTIC CABLE
MINIMUM DEPTH IN SOIL: 36"
MINIMUM DEPTH AT ROAD CROSSING: 60" (IN RURAL AREAS)
9. THE CONTRACTOR IS RESPONSIBLE FOR PLACING ROAD GRAVEL IN ALL HAND HOLES PLACED OR ENTERED.
10. A MINIMUM 6" BED OF ROAD GRAVEL SHOULD BE PLACED PRIOR TO SETTING HAND HOLES.
11. ACORN TYPE HEX HEAD THREADED GROUND ROD CLAMPS SHOULD BE USED TO FASTEN GROUND WIRE TO GROUND RODS IN HAND HOLES WITHOUT RHINO TEST STATIONS.
12. ALL CABLE, DUCT & TRACER WIRE SHOULD BE TAGGED BY CONSTRUCTION CONTRACTOR.
13. BORES OVER 500 FT. MAY BE BROKEN UP INTO SHORTER BORES FOR CONTRACTORS CONVENIENCE, WITH THE EXCEPTION TO PLACING BORE PITS IN WETLANDS WHICH WILL HAVE TO BE APPROVED BY DESIGNER.
14. PROPOSED WETLAND BORE PITS SHOULD BE RECEIVING PITS ONLY, PREFERABLY COUPLING OF DUCT BE COMPLETED BY HAND-DIGGING ONLY. DO NOT SET UP THE BORE RIG IN WETLANDS, WITHOUT PRIOR AUTHORIZATION.
15. ALL AERIAL CONSTRUCTION TO MEET NESC AND RUS SPECIFICATIONS.
16. PROPOSED PLACEMENT OF FACILITIES IS BASED ON DESIGN AND PLANNING LOCATES OBTAINED THROUGH THE STATE ONE CALL SYSTEM. ACTUAL FACILITY PLACEMENT IS SUBJECT TO CHANGE BASED ON FIELD LOCATES ENCOUNTERED DURING CONSTRUCTION.
17. PERMITS (PERMIT BOOK WILL BE PROVIDED PRIOR TO CONSTRUCTION). THE CONSTRUCTION CONTRACTOR IS RESPONSIBLE FOR REVIEWING AND FOLLOWING ANY AND ALL STIPULATIONS SET FORTH BY THE PERMIT ENTITIES.

FIBER OPTIC CABLE UNCOVERING SYSTEM

1. THE TITLE OF THIS PROGRAM, F.O.C.U.S., AN ACRONYM FOR "FIBER OPTIC CABLE UNCOVERING SYSTEM," WAS SELECTED TO REMIND EVERYONE INVOLVED WITH WORKING NEAR MCI'S ACTIVE FIBER OPTIC SYSTEMS TO FOCUS ON PROTECTING THE FACILITIES. IF, DURING THE COURSE OF THE PROJECT, YOU NOTICE ANY ACTIVITY WHICH MAY JEOPARDIZE THE MCI OSP FACILITIES, IT IS YOUR DUTY TO STOP THE WORK AND RE-F.O.C.U.S.
2. F.O.C.U.S. RULES MUST BE FOLLOWED ON ALL MCI PROJECTS INVOLVING WORK ON OR NEAR MCI OSP FACILITIES. SAFETY IS MCI'S NUMBER ONE PRIORITY; EVERYONE MUST REFRAIN FROM UNSAFE AND IMPROPER PRACTICES.
3. REVIEW OF F.O.C.U.S. IS MANDATORY AT EVERY PRE-BID, PRE-CONSTRUCTION SITE MEETING AND DAILY TAILGATE MEETING. F.O.C.U.S. DISCUSSION MUST INCLUDE SITE-SPECIFIC HISTORY, UNIQUE PROBLEMS, FACILITY CONFIGURATIONS THAT MAY BE ENCOUNTERED, AND PAST ERRORS. "THOSE WHO DO NOT LEARN FROM HISTORY ARE DOOMED TO REPEAT IT." DO NOT LET THIS HAPPEN TO YOU.
4. ANY WORK NEAR OR REQUIRING HANDLING OF MCI OUTSIDE PLANT FACILITIES CAN ONLY BE PERFORMED WITH AN MCI EMPLOYEE OR CONTRACT REPRESENTATIVE PRESENT – THIS MEANS OUT OF HIS OR HER VEHICLE AND DIRECTLY MONITORING THE SYSTEM. THE REPRESENTATIVE MUST HAVE A PROPERLY OPERATING CABLE LOCATOR CHECKED FOR ACCURACY EVERY DAY PRIOR TO COMMENCEMENT OF WORK (COMPARISON OF LINE AND DEPTH READINGS TO ACTUAL LINE AND DEPTH OF THE CABLE).
5. LOCATE AND POT HOLE REQUIREMENTS:
 - PRIOR TO ANY EXCAVATION, THE MCI EMPLOYEE OR CONTRACT REPRESENTATIVE MUST VERIFY THE INITIAL LOCATE MARKS COMPLETED BY MCI OPERATIONS. DO NOT TRUST LOCATE RESULTS COMPLETED BY OTHERS! THE MCI OR CONTRACT REPRESENTATIVE MUST LOCATE THE CABLE RUNNING LINE BY MAKING AT LEAST ONE PASS IN EACH DIRECTION. LOCATE RESULTS MUST THEN BE COMPARED WITH PREVIOUS MARKS AND THE AS-BUILTS.
 - IF THE PROPOSED WORK INVOLVES DIGGING OR EXCAVATING WITHIN 3 FEET OF THE CABLE, THE CABLE ROUTE WILL BE MARKED CONTINUALLY WITH ORANGE PAINT AND SUPPLEMENTED BY MARKER FLAGS PLACED EVERY 10 FT. THE EXCAVATION CONTRACTOR MUST POT HOLE (ALL POT HOLES MUST BE COMPLETED BY HAND DIGGING OR VACUUM EXCAVATION) A MINIMUM OF EVERY 15 FT., THEN EXPOSE THE ENTIRE LENGTH OF THE CABLE BY HAND DIGGING OR VACUUM EXCAVATION.
 - IF THE PROPOSED WORK INVOLVES DIGGING OR EXCAVATING WITHIN 5 FEET (BUT NOT CLOSER THAN 3 FEET) OF THE CABLE, THE CABLE ROUTE WILL BE MARKED CONTINUALLY WITH ORANGE PAINT AND SUPPLEMENTED BY MARKER FLAGS PLACED EVERY 10 FT. THE EXCAVATION CONTRACTOR MUST POT HOLE THE CABLE A MINIMUM OF EVERY 15 FT.
 - IF THE PROPOSED WORK INVOLVES DIGGING OR EXCAVATING WITHIN 15 FEET (BUT NOT CLOSER THAN 5 FEET) OF THE CABLE, THE CABLE ROUTE WILL BE MARKED CONTINUALLY WITH ORANGE PAINT AND SUPPLEMENTED BY MARKER FLAGS PLACED EVERY 10 FT. THE EXCAVATION CONTRACTOR MUST POT HOLE THE CABLE A MINIMUM OF EVERY 30 FT.
6. EXPOSING REQUIREMENTS:
 - NO MECHANICAL EXCAVATION WITHIN 3 FT. OF OSP FACILITIES WILL BE ALLOWED UNLESS THE FACILITIES HAVE FIRST BEEN PROPERLY LOCATED, POT HOLED, POSITIVELY IDENTIFIED, CONTINUOUSLY EXPOSED BY HAND DIGGING OR VACUUM EXCAVATION, AND THE FACILITIES ARE CLEARLY VISIBLE.
 - IN ADDITION, MECHANICAL EXCAVATION WITHIN 3 FT. OF OSP FACILITIES REQUIRES ON-SITE PRIOR APPROVAL FROM MCI'S EMPLOYEE OR CONTRACT REPRESENTATIVE.
7. PLEASE REFER TO THE LATEST EDITION OF THE MCI OSP HANDBOOK FOR ADDITIONAL DETAILS. KNOW IT AND FOLLOW IT.

MCI OUTSIDE PLANT CONSTRUCTION GENERAL REQUIREMENTS

1. ALL FEDERAL, STATE AND LOCAL SAFETY REGULATIONS MUST BE FOLLOWED WITHOUT EXCEPTION.
2. PERSONAL PROTECTIVE EQUIPMENT APPROPRIATE FOR THE SPECIFIC WORK SITE SHALL BE USED AT ALL TIMES. AT A MINIMUM, HARD HAT, SAFETY SHOES/STEEL-TOED BOOTS, AND FLORESCENT ORANGE OR GREEN WORK VEST ARE REQUIRED UPON ENTERING ANY MCI WORK SITE.
3. USE OF INTOXICANTS, DRUGS, INHALANTS OR ANY OTHER SUBSTANCES THAT MAY IMPAIR ALERTNESS ARE STRICTLY PROHIBITED.
4. CONTRACTORS ARE NOT ALLOWED TO CUT ANY CABLE. CABLES SCHEDULED FOR REMOVAL WILL BE CUT BY MCI OPERATIONS PERSONNEL, AND ONLY AFTER VERIFICATION THAT ALL TRAFFIC HAS BEEN OFF-LOADED.
5. EXTREME CAUTION MUST BE USED AT ALL TIMES WHEN WORKING ON OR NEAR ACTIVE CABLES. AN MCI EMPLOYEE OR CONTRACT REPRESENTATIVE MUST APPROVE AND BE PRESENT PRIOR TO AND DURING ALL CABLE HANDLING ACTIVITIES.
6. TOOLS AND EQUIPMENT SPECIFICALLY DESIGNED FOR THE JOB AT HAND ARE REQUIRED. USE THE PROPER TOOL FOR THE JOB.
7. CONDUIT WORK INVOLVING ACTIVE CABLES REQUIRES SPECIALIZED TOOLS SPECIFICALLY DESIGNED TO ACCESS DUCTS WITH ACTIVE CABLES.
8. PROTECTING MCI FACILITIES IS EXTREMELY IMPORTANT; HOWEVER, SAFETY REGARDING YOURSELF AND OTHERS IS THE MOST IMPORTANT PART OF ANY PROJECT.



THIS DOCUMENT IS THE PROPERTY OF I & S GROUP, INC. AND MAY NOT BE USED, COPIED OR DUPLICATED WITHOUT PRIOR WRITTEN CONSENT.

PROJECT

MIN JADE

MAPLE GROVE MN

REVISION SCHEDULE		
DATE	DESCRIPTION	BY
5/11/23	PLANS UPDATED PER ROUTE CHANGE	JK

PROJECT NO.	23-28349
FILE NAME	28349-UTILITY-R
DRAWN BY	CB
DESIGNED BY	CB
REVIEWED BY	KV
ORIGINAL ISSUE DATE	02/07/23
CLIENT PROJECT NO.	124289

TITLE

GENERAL NOTES

SHEET



THIS DOCUMENT IS THE PROPERTY OF I & S GROUP, INC. AND MAY NOT BE USED, COPIED OR DUPLICATED WITHOUT PRIOR WRITTEN CONSENT.

PROJECT

MIN JADE

MAPLE GROVE MN

REVISION SCHEDULE		
DATE	DESCRIPTION	BY
5/11/23	PLANS UPDATED PER ROUTE CHANGE	JK

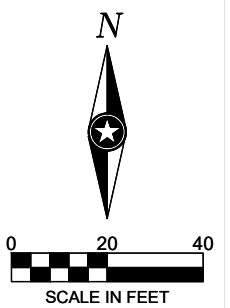
PROJECT NO.	23-28349
FILE NAME	28349-UTILITY-R
DRAWN BY	CB
DESIGNED BY	CB
REVIEWED BY	KV
ORIGINAL ISSUE DATE	02/07/23
CLIENT PROJECT NO.	124289

TITLE

PLAN SHEET

SHEET

5 OF 20



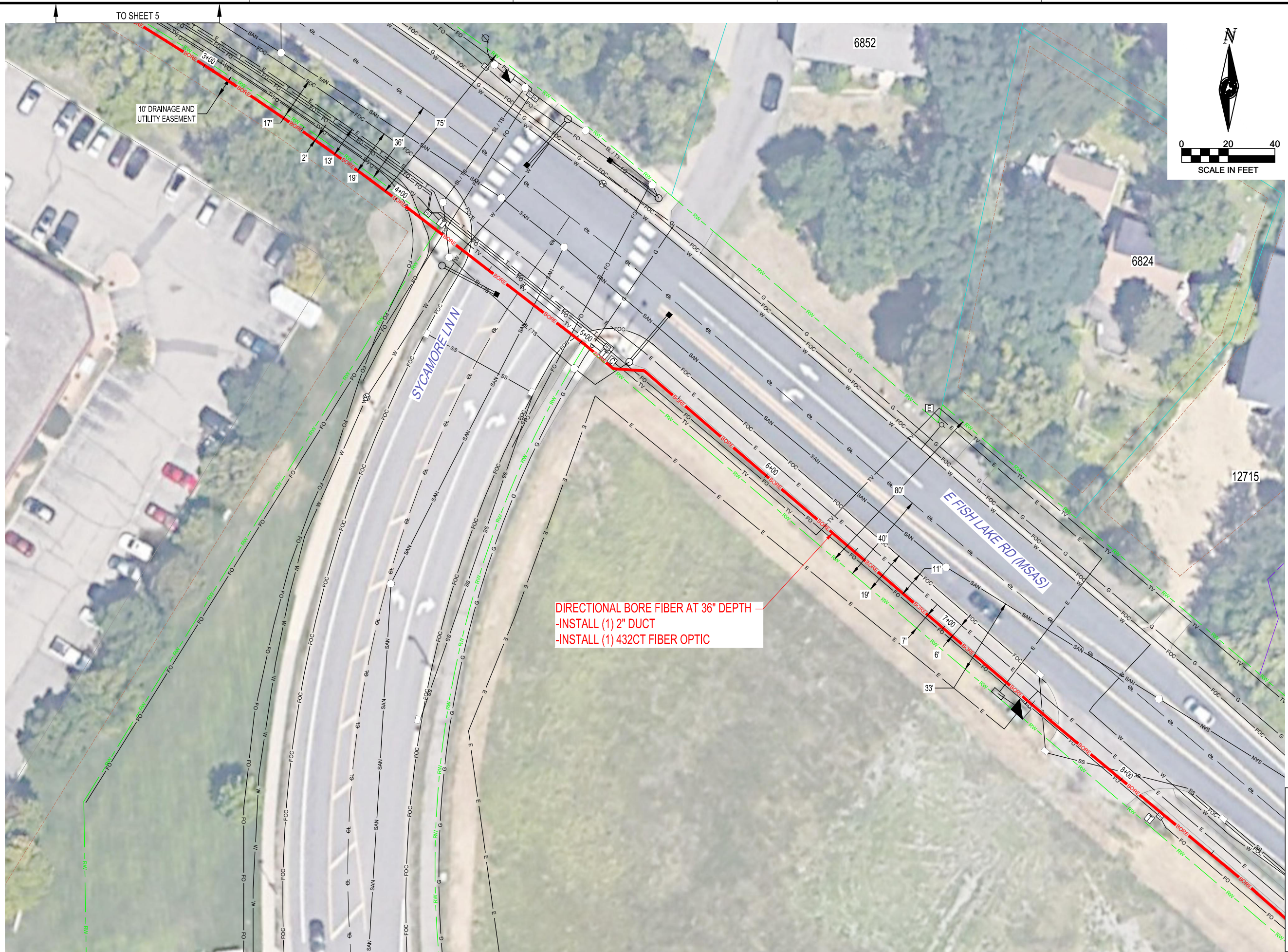
START OF PERMIT 1
STA: 0+00

DIRECTIONAL BORE FIBER AT 36" DEPTH
-INSTALL (1) 2" DUCT
-INSTALL (1) 432CT FIBER OPTIC

EXISTING MCI HH-1
-ADD (1) SPLICE CASE 450D
-ADD 50' SLACK COIL - 432F

10' DRAINAGE AND
UTILITY EASEMENT

TO SHEET 6



TO SHEET 5

10' DRAINAGE AND UTILITY EASEMENT

6852

6824

12715

SYCAMORE LN N

E FISH LAKE RD (MSAS)

DIRECTIONAL BORE FIBER AT 36" DEPTH
 -INSTALL (1) 2" DUCT
 -INSTALL (1) 432CT FIBER OPTIC



THIS DOCUMENT IS THE PROPERTY OF I & S GROUP, INC. AND MAY NOT BE USED, COPIED OR DUPLICATED WITHOUT PRIOR WRITTEN CONSENT.

PROJECT

MIN JADE

MAPLE GROVE MN

REVISION SCHEDULE		
DATE	DESCRIPTION	BY
5/11/23	PLANS UPDATED PER ROUTE CHANGE	JK

PROJECT NO.	23-28349
FILE NAME	28349-UTILITY-R
DRAWN BY	CB
DESIGNED BY	CB
REVIEWED BY	KV
ORIGINAL ISSUE DATE	02/07/23
CLIENT PROJECT NO.	124289

TITLE

PLAN SHEET

SHEET

6

OF 20

TO SHEET 7



THIS DOCUMENT IS THE PROPERTY OF I & S GROUP, INC. AND MAY NOT BE USED, COPIED OR DUPLICATED WITHOUT PRIOR WRITTEN CONSENT.

PROJECT

MIN JADE

MAPLE GROVE MN

REVISION SCHEDULE		
DATE	DESCRIPTION	BY
5/11/23	PLANS UPDATED PER ROUTE CHANGE	JK

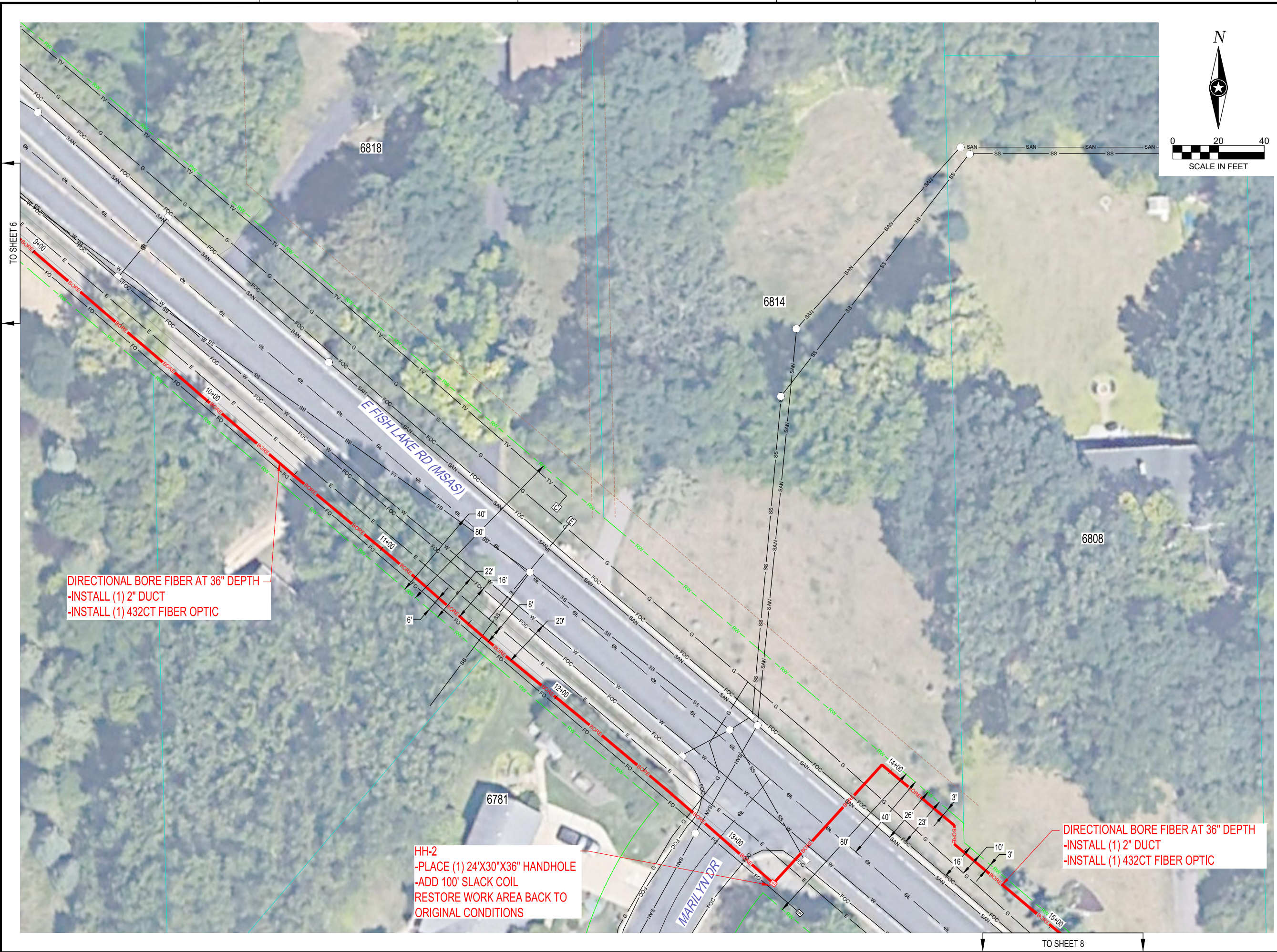
PROJECT NO.	23-28349
FILE NAME	28349-UTILITY-R
DRAWN BY	CB
DESIGNED BY	CB
REVIEWED BY	KV
ORIGINAL ISSUE DATE	02/07/23
CLIENT PROJECT NO.	124289

TITLE

PLAN SHEET

SHEET

7 OF 20



DIRECTIONAL BORE FIBER AT 36" DEPTH
 -INSTALL (1) 2" DUCT
 -INSTALL (1) 432CT FIBER OPTIC

HH-2
 -PLACE (1) 24"X30"X36" HANDHOLE
 -ADD 100' SLACK COIL
 RESTORE WORK AREA BACK TO ORIGINAL CONDITIONS

DIRECTIONAL BORE FIBER AT 36" DEPTH
 -INSTALL (1) 2" DUCT
 -INSTALL (1) 432CT FIBER OPTIC

TO SHEET 6

TO SHEET 8



THIS DOCUMENT IS THE PROPERTY OF I & S GROUP, INC. AND MAY NOT BE USED, COPIED OR DUPLICATED WITHOUT PRIOR WRITTEN CONSENT.

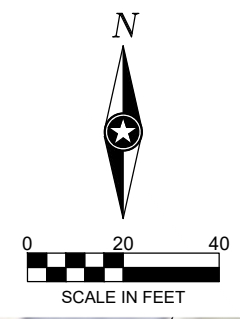
PROJECT
MIN JADE
MAPLE GROVE MN

REVISION SCHEDULE		
DATE	DESCRIPTION	BY
5/11/23	PLANS UPDATED PER ROUTE CHANGE	JK

PROJECT NO. 23-28349
 FILE NAME 28349-UTILITY-R
 DRAWN BY CB
 DESIGNED BY CB
 REVIEWED BY KV
 ORIGINAL ISSUE DATE 02/07/23
 CLIENT PROJECT NO. 124289

TITLE
PLAN SHEET

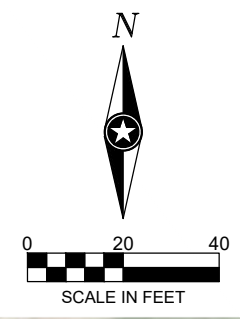
SHEET
8 OF 20



DIRECTIONAL BORE FIBER AT 36" DEPTH
 -INSTALL (1) 2" DUCT
 -INSTALL (1) 432CT FIBER OPTIC

TO SHEET 9

TO SHEET 7



THIS DOCUMENT IS THE PROPERTY OF I & S GROUP, INC. AND MAY NOT BE USED, COPIED OR DUPLICATED WITHOUT PRIOR WRITTEN CONSENT.

PROJECT

MIN JADE

MAPLE GROVE MN

REVISION SCHEDULE		
DATE	DESCRIPTION	BY
5/11/23	PLANS UPDATED PER ROUTE CHANGE	JK

PROJECT NO.	23-28349
FILE NAME	28349-UTILITY-R
DRAWN BY	CB
DESIGNED BY	CB
REVIEWED BY	KV
ORIGINAL ISSUE DATE	02/07/23
CLIENT PROJECT NO.	124289

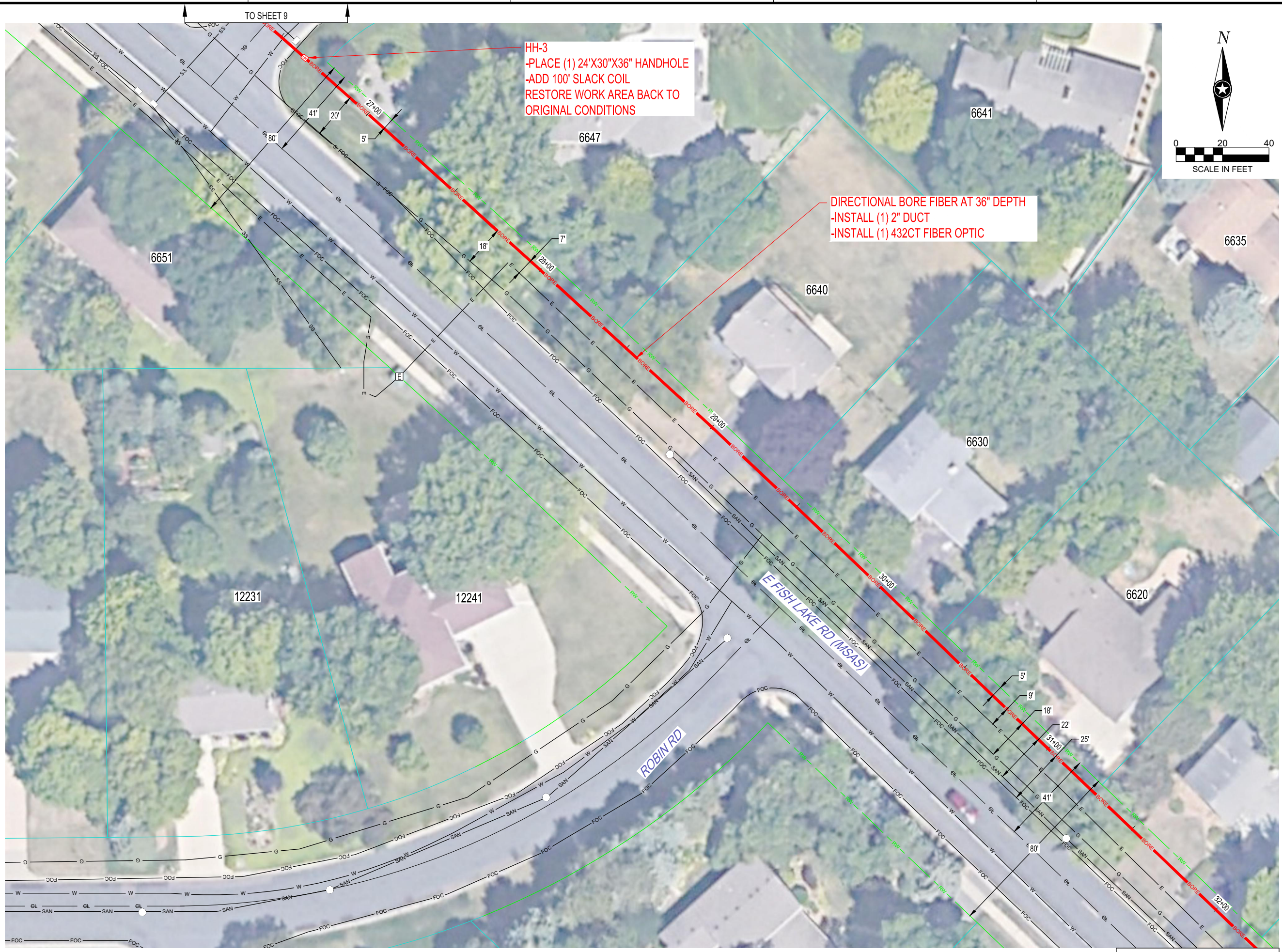
TITLE

PLAN SHEET

SHEET

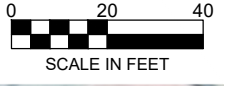
9

OF 20



HH-3
 -PLACE (1) 24'X30'X36" HANDHOLE
 -ADD 100' SLACK COIL
 RESTORE WORK AREA BACK TO ORIGINAL CONDITIONS

DIRECTIONAL BORE FIBER AT 36" DEPTH
 -INSTALL (1) 2" DUCT
 -INSTALL (1) 432CT FIBER OPTIC



THIS DOCUMENT IS THE PROPERTY OF I & S GROUP, INC. AND MAY NOT BE USED, COPIED OR DUPLICATED WITHOUT PRIOR WRITTEN CONSENT.

PROJECT

MIN JADE

MAPLE GROVE MN

REVISION SCHEDULE		
DATE	DESCRIPTION	BY
5/11/23	PLANS UPDATED PER ROUTE CHANGE	JK

PROJECT NO.	23-28349
FILE NAME	28349-UTILITY-R
DRAWN BY	CB
DESIGNED BY	CB
REVIEWED BY	KV
ORIGINAL ISSUE DATE	02/07/23
CLIENT PROJECT NO.	124289

TITLE

PLAN SHEET

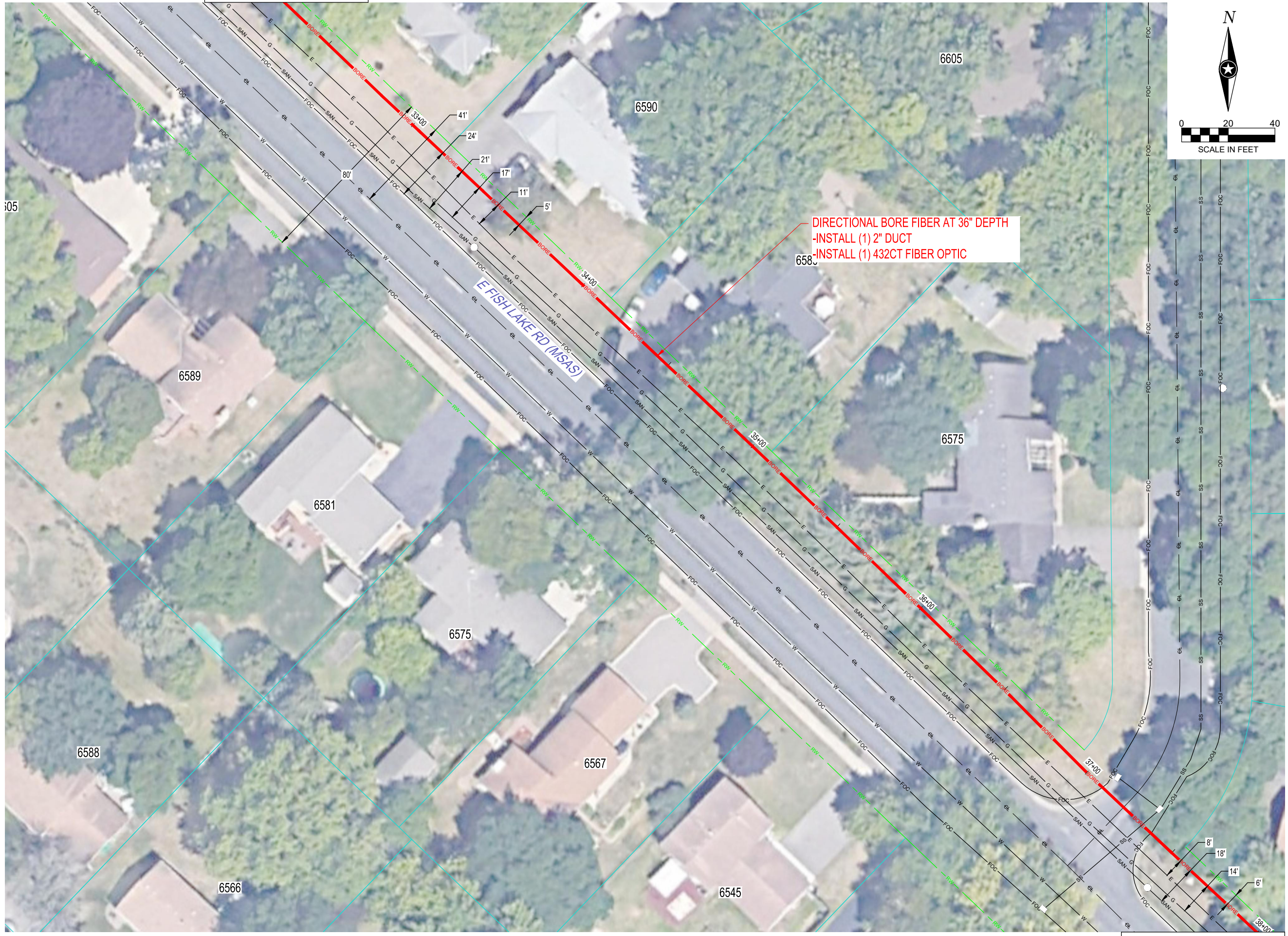
SHEET

10

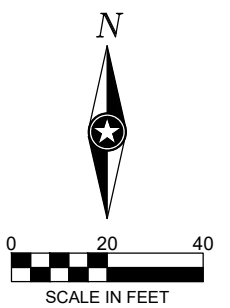
OF 20

TO SHEET 9

TO SHEET 11



TO SHEET 10



DIRECTIONAL BORE FIBER AT 36" DEPTH
 -INSTALL (1) 2" DUCT
 -INSTALL (1) 432CT FIBER OPTIC



THIS DOCUMENT IS THE PROPERTY OF I & S GROUP, INC. AND MAY NOT BE USED, COPIED OR DUPLICATED WITHOUT PRIOR WRITTEN CONSENT.

PROJECT

MIN JADE

MAPLE GROVE MN

REVISION SCHEDULE		
DATE	DESCRIPTION	BY
5/11/23	PLANS UPDATED PER ROUTE CHANGE	JK

PROJECT NO.	23-28349
FILE NAME	28349-UTILITY-R
DRAWN BY	CB
DESIGNED BY	CB
REVIEWED BY	KV
ORIGINAL ISSUE DATE	02/07/23
CLIENT PROJECT NO.	124289

TITLE

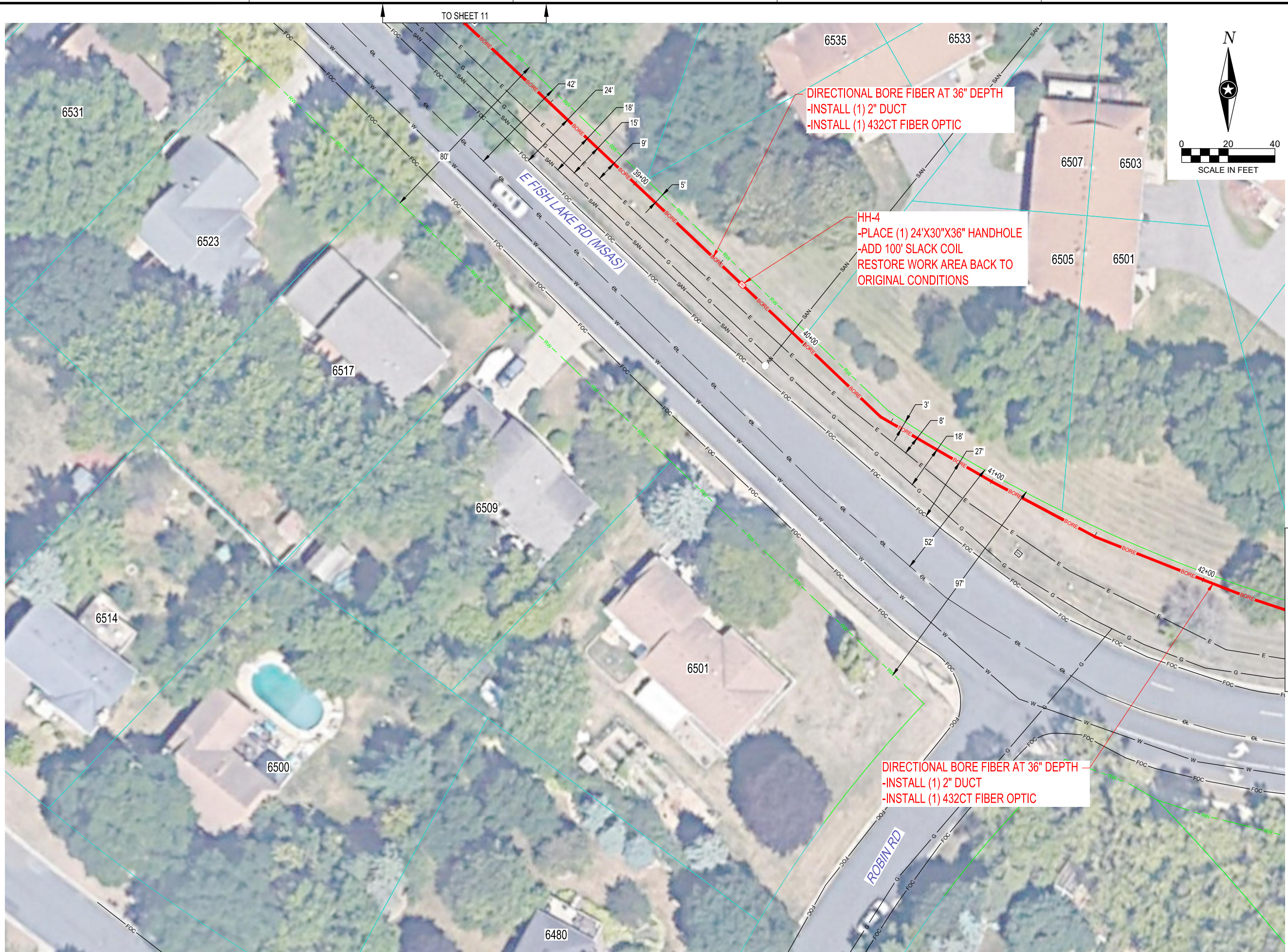
PLAN SHEET

SHEET

11

OF 20

TO SHEET 12



THIS DOCUMENT IS THE PROPERTY OF I & S GROUP, INC. AND MAY NOT BE USED, COPIED OR DUPLICATED WITHOUT PRIOR WRITTEN CONSENT.

PROJECT

MIN JADE

MAPLE GROVE MN

REVISION SCHEDULE		
DATE	DESCRIPTION	BY
5/11/23	PLANS UPDATED PER ROUTE CHANGE	JK

PROJECT NO.	23-28349
FILE NAME	28349-UTILITY-R
DRAWN BY	CB
DESIGNED BY	CB
REVIEWED BY	KV
ORIGINAL ISSUE DATE	02/07/23
CLIENT PROJECT NO.	124289

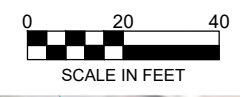
TITLE

PLAN SHEET

SHEET

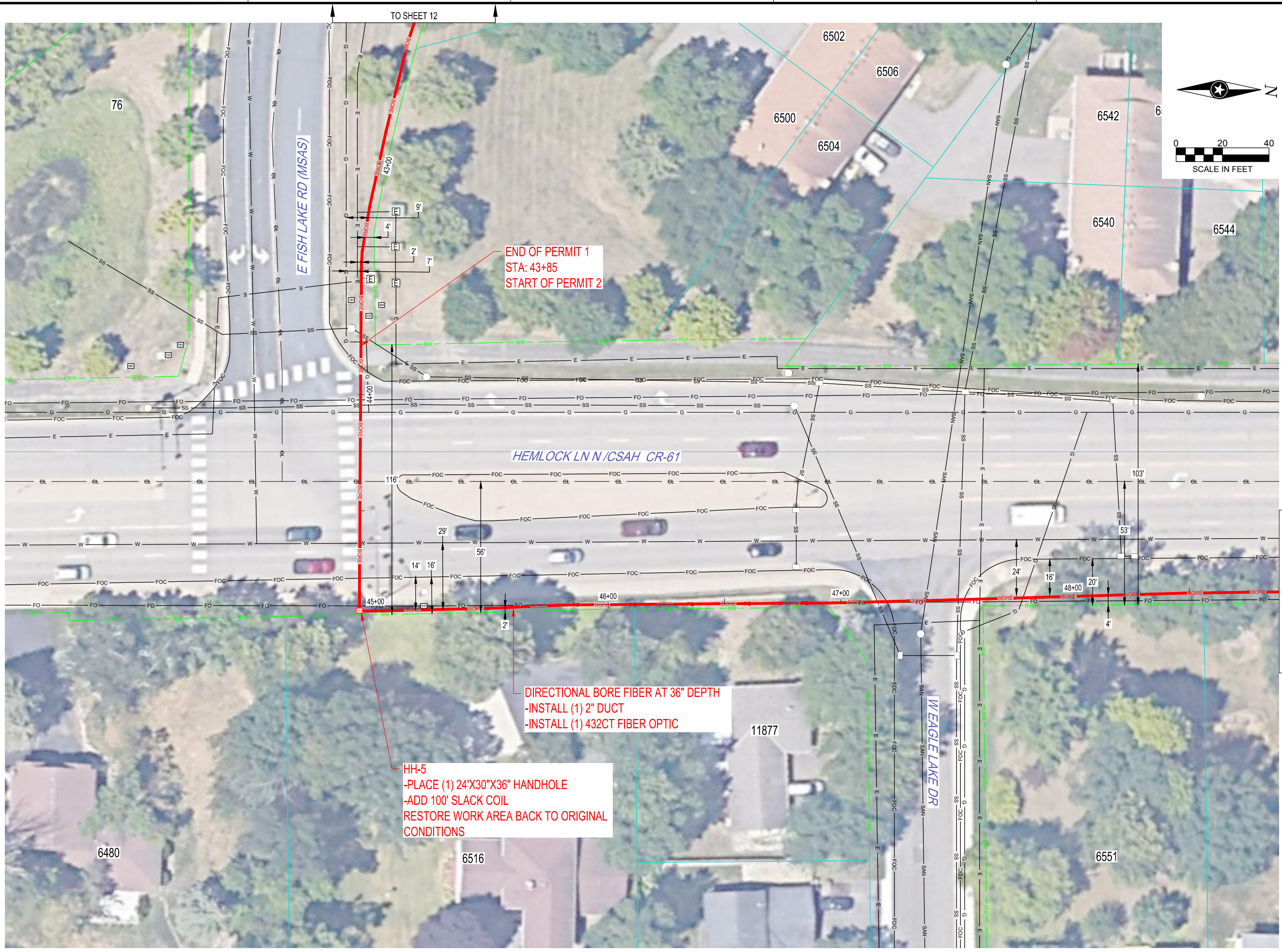
12

OF 20



TO SHEET 11

TO SHEET 13



THIS DOCUMENT IS THE PROPERTY OF I & S GROUP, INC. AND MAY NOT BE USED, COPIED OR DUPLICATED WITHOUT PRIOR WRITTEN CONSENT.

PROJECT

MIN JADE

MAPLE GROVE MN

REVISION SCHEDULE		
DATE	DESCRIPTION	BY
5/11/23	PLANS UPDATED PER ROUTE CHANGE	JK

PROJECT NO.	23-28349
FILE NAME	28349-UTILITY-R
DRAWN BY	CB
DESIGNED BY	CB
REVIEWED BY	KV
ORIGINAL ISSUE DATE	02/07/23
CLIENT PROJECT NO.	124289

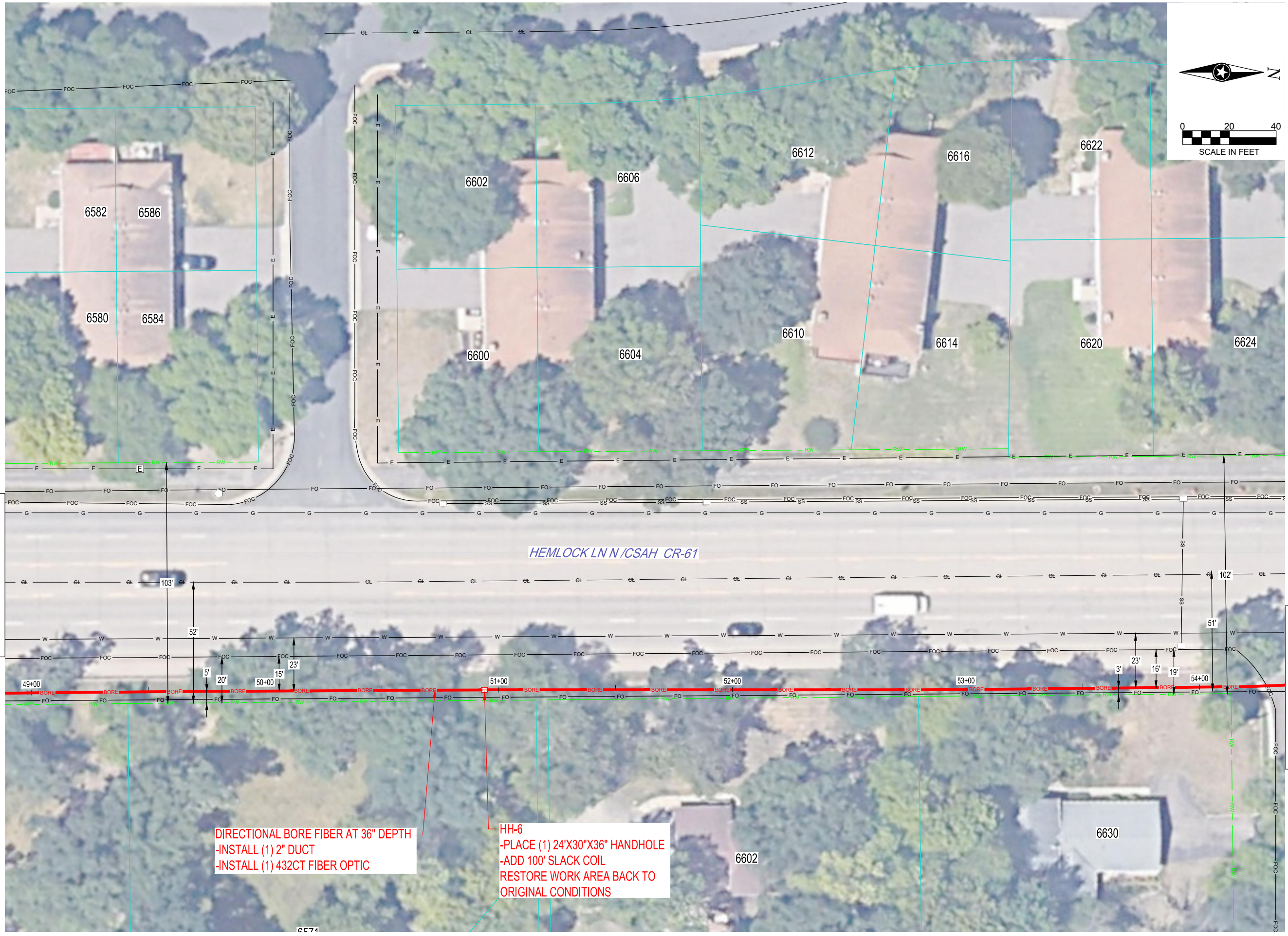
TITLE

PLAN SHEET

SHEET

13

OF 20



THIS DOCUMENT IS THE PROPERTY OF I & S GROUP, INC. AND MAY NOT BE USED, COPIED OR DUPLICATED WITHOUT PRIOR WRITTEN CONSENT.

PROJECT
MIN JADE
MAPLE GROVE MN

REVISION SCHEDULE		
DATE	DESCRIPTION	BY
5/11/23	PLANS UPDATED PER ROUTE CHANGE	JK

PROJECT NO. 23-28349
 FILE NAME 28349-UTILITY-R
 DRAWN BY CB
 DESIGNED BY CB
 REVIEWED BY KV
 ORIGINAL ISSUE DATE 02/07/23
 CLIENT PROJECT NO. 124289

TITLE
PLAN SHEET

SHEET
14 OF 20

DIRECTIONAL BORE FIBER AT 36" DEPTH
 -INSTALL (1) 2" DUCT
 -INSTALL (1) 432CT FIBER OPTIC

HH-6
 -PLACE (1) 24"X30"X36" HANDHOLE
 -ADD 100' SLACK COIL
 RESTORE WORK AREA BACK TO ORIGINAL CONDITIONS



THIS DOCUMENT IS THE PROPERTY OF I & S GROUP, INC. AND MAY NOT BE USED, COPIED OR DUPLICATED WITHOUT PRIOR WRITTEN CONSENT.

PROJECT

MIN JADE

MAPLE GROVE MN

REVISION SCHEDULE		
DATE	DESCRIPTION	BY
5/11/23	PLANS UPDATED PER ROUTE CHANGE	JK

PROJECT NO.	23-28349
FILE NAME	28349-UTILITY-R
DRAWN BY	CB
DESIGNED BY	CB
REVIEWED BY	KV
ORIGINAL ISSUE DATE	02/07/23
CLIENT PROJECT NO.	124289

TITLE

PLAN SHEET

SHEET

15 OF 20



THIS DOCUMENT IS THE PROPERTY OF I & S GROUP, INC. AND MAY NOT BE USED, COPIED OR DUPLICATED WITHOUT PRIOR WRITTEN CONSENT.

PROJECT

MIN JADE

MAPLE GROVE MN

REVISION SCHEDULE		
DATE	DESCRIPTION	BY
5/11/23	PLANS UPDATED PER ROUTE CHANGE	JK

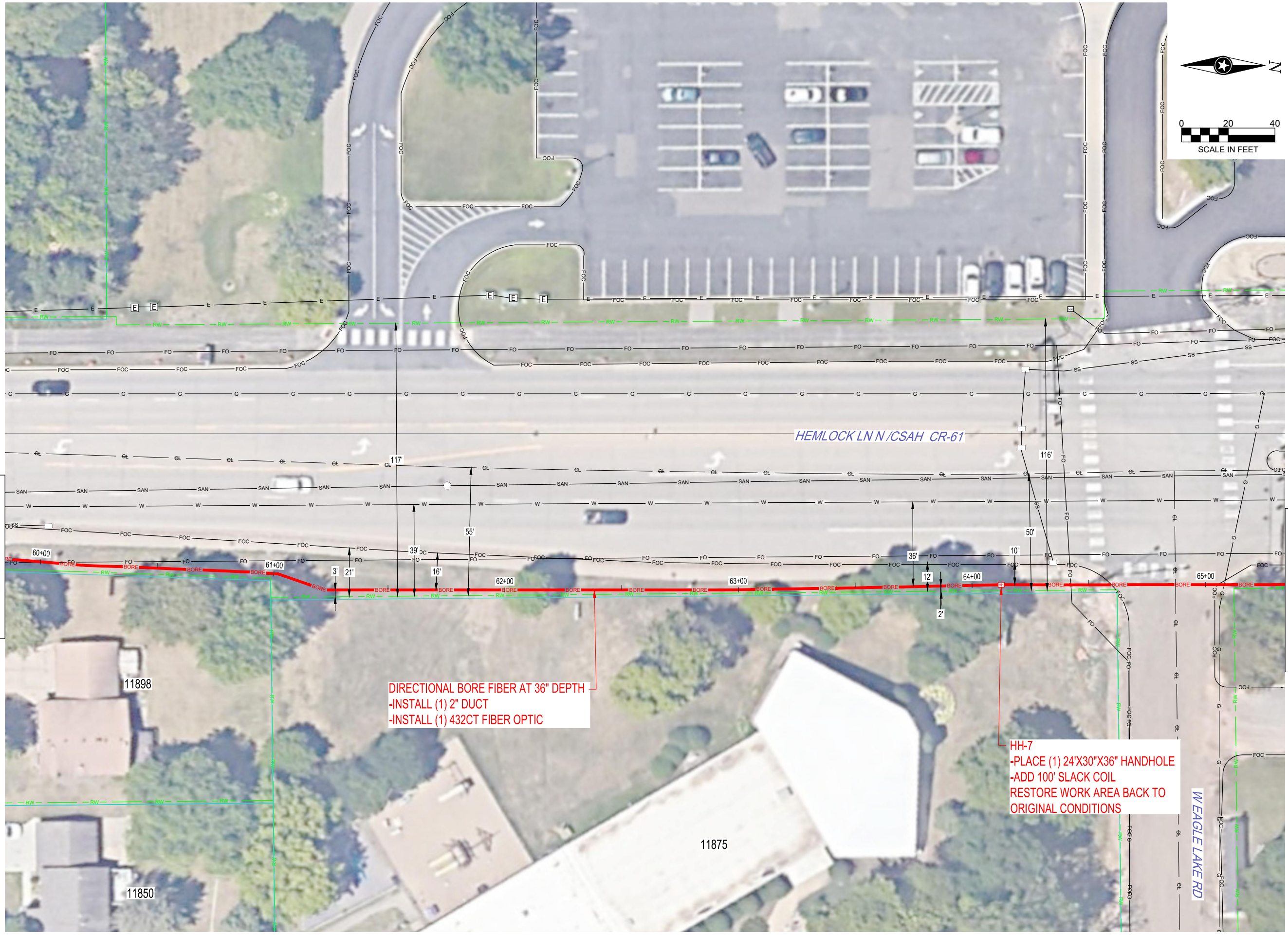
PROJECT NO.	23-28349
FILE NAME	28349-UTILITY-R
DRAWN BY	CB
DESIGNED BY	CB
REVIEWED BY	KV
ORIGINAL ISSUE DATE	02/07/23
CLIENT PROJECT NO.	124289

TITLE

PLAN SHEET

SHEET

16 OF 20

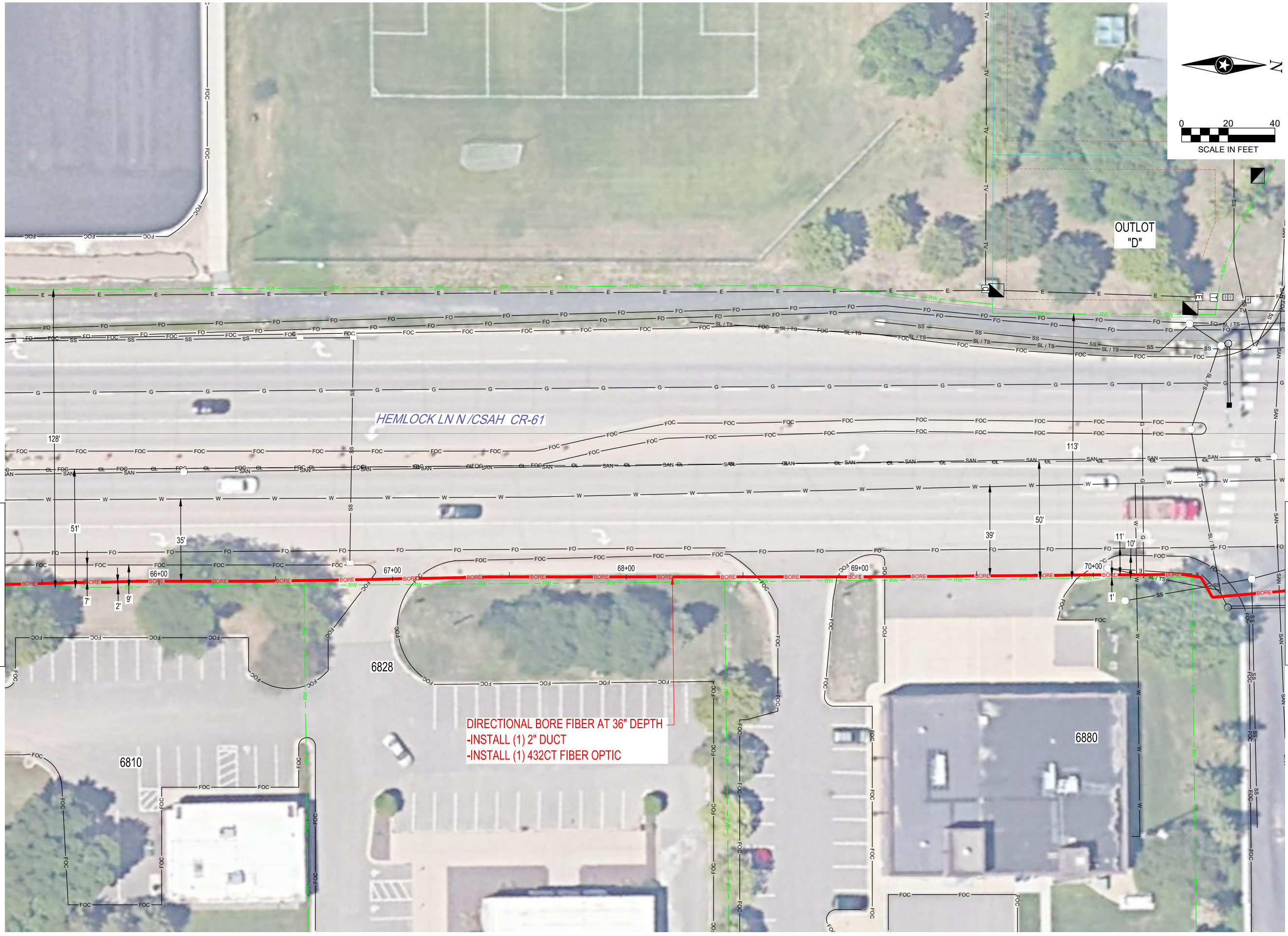


DIRECTIONAL BORE FIBER AT 36" DEPTH
 -INSTALL (1) 2" DUCT
 -INSTALL (1) 432CT FIBER OPTIC

HH-7
 -PLACE (1) 24"X30"X36" HANDHOLE
 -ADD 100' SLACK COIL
 RESTORE WORK AREA BACK TO ORIGINAL CONDITIONS

TO SHEET 15

TO SHEET 17



THIS DOCUMENT IS THE PROPERTY OF I & S GROUP, INC. AND MAY NOT BE USED, COPIED OR DUPLICATED WITHOUT PRIOR WRITTEN CONSENT.

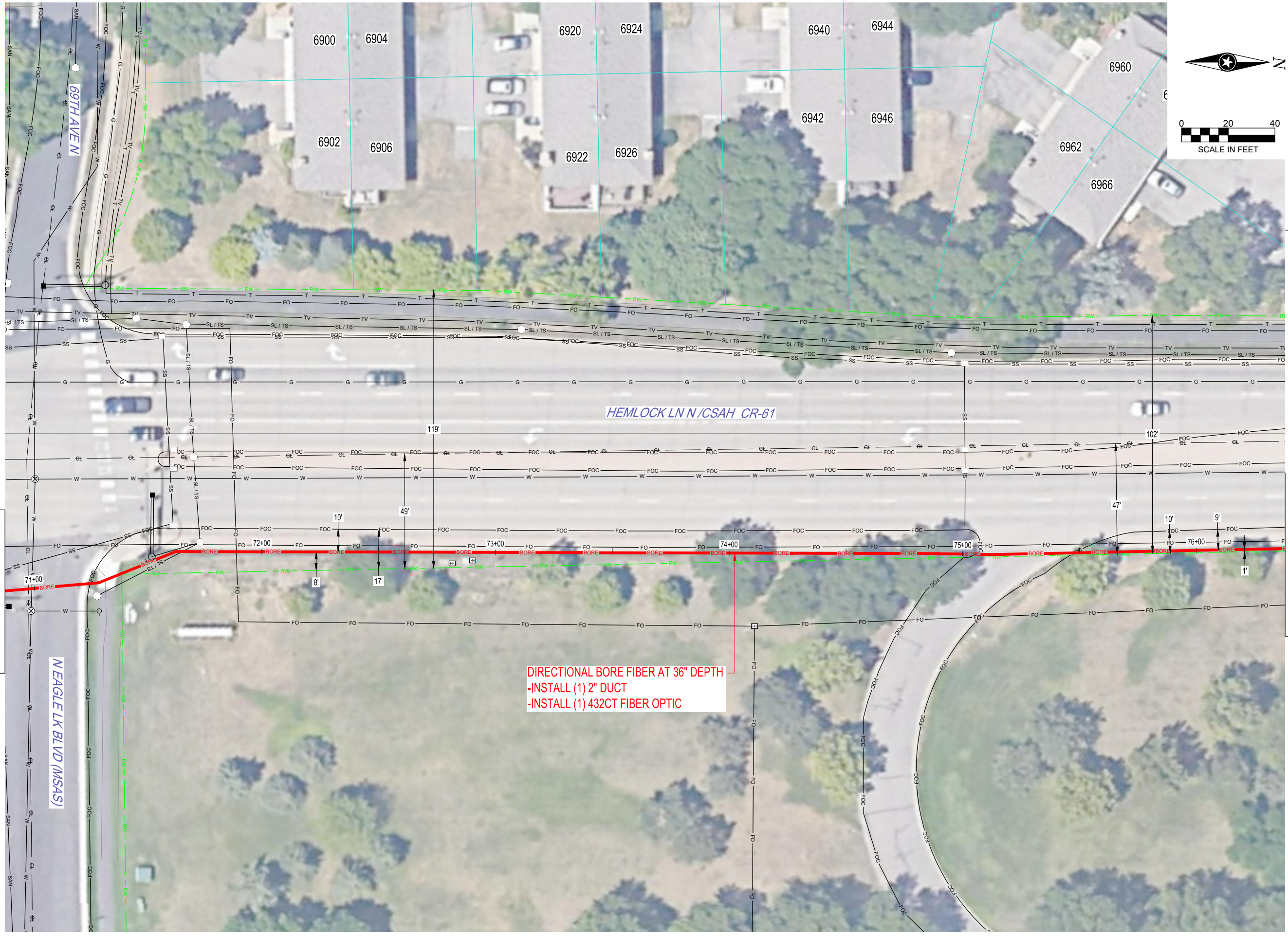
PROJECT
MIN JADE
MAPLE GROVE MN

REVISION SCHEDULE		
DATE	DESCRIPTION	BY
5/11/23	PLANS UPDATED PER ROUTE CHANGE	JK

PROJECT NO. 23-28349
 FILE NAME 28349-UTILITY-R
 DRAWN BY CB
 DESIGNED BY CB
 REVIEWED BY KV
 ORIGINAL ISSUE DATE 02/07/23
 CLIENT PROJECT NO. 124289

TITLE
PLAN SHEET

SHEET
17 OF 20



THIS DOCUMENT IS THE PROPERTY OF I & S GROUP, INC. AND MAY NOT BE USED, COPIED OR DUPLICATED WITHOUT PRIOR WRITTEN CONSENT.

PROJECT
MIN JADE
MAPLE GROVE MN

REVISION SCHEDULE		
DATE	DESCRIPTION	BY
5/11/23	PLANS UPDATED PER ROUTE CHANGE	JK

PROJECT NO. 23-28349
 FILE NAME 28349-UTILITY-R
 DRAWN BY CB
 DESIGNED BY CB
 REVIEWED BY KV
 ORIGINAL ISSUE DATE 02/07/23
 CLIENT PROJECT NO. 124289

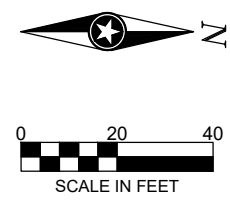
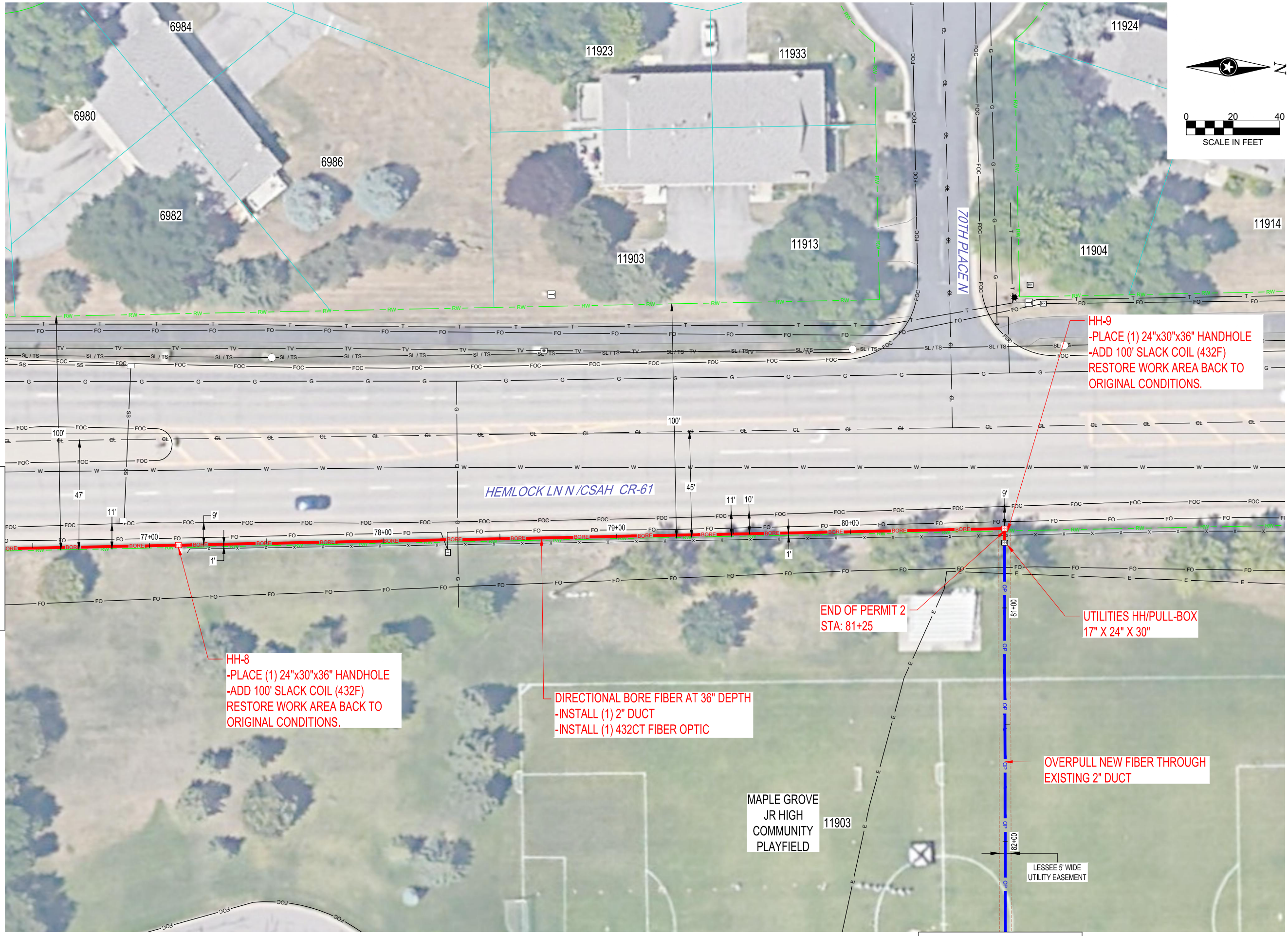
TITLE
PLAN SHEET

SHEET
18 OF 20

DIRECTIONAL BORE FIBER AT 36" DEPTH
-INSTALL (1) 2" DUCT
-INSTALL (1) 432CT FIBER OPTIC

TO SHEET 17

TO SHEET 19



THIS DOCUMENT IS THE PROPERTY OF I & S GROUP, INC. AND MAY NOT BE USED, COPIED OR DUPLICATED WITHOUT PRIOR WRITTEN CONSENT.

PROJECT

MIN JADE

MAPLE GROVE MN

REVISION SCHEDULE		
DATE	DESCRIPTION	BY
5/11/23	PLANS UPDATED PER ROUTE CHANGE	JK

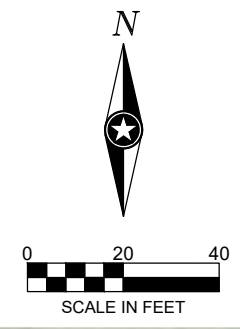
PROJECT NO.	23-28349
FILE NAME	28349-UTILITY-R
DRAWN BY	CB
DESIGNED BY	CB
REVIEWED BY	KV
ORIGINAL ISSUE DATE	02/07/23
CLIENT PROJECT NO.	124289

TITLE

PLAN SHEET

SHEET

19 OF 20



THIS DOCUMENT IS THE PROPERTY OF I & S GROUP, INC. AND MAY NOT BE USED, COPIED OR DUPLICATED WITHOUT PRIOR WRITTEN CONSENT.

PROJECT

MIN JADE

MAPLE GROVE MN

REVISION SCHEDULE		
DATE	DESCRIPTION	BY
5/11/23	PLANS UPDATED PER ROUTE CHANGE	JK

PROJECT NO.	23-28349
FILE NAME	28349-UTILITY-R
DRAWN BY	CB
DESIGNED BY	CB
REVIEWED BY	KV
ORIGINAL ISSUE DATE	02/07/23
CLIENT PROJECT NO.	124289

TITLE

PLAN SHEET

SHEET

20

OF 20