



ACCESS TRANSMISSION SERVICES LLC D/B/A VERIZON ACCESS TRANSMISSION

OUTSIDE PLANT CONSTRUCTION
FIBER OPTIC CABLE ROUTE

CITY OF OF MAPLE GROVE ROW PERMIT MAPLE GROVE, MINNESOTA

PERMIT 2301APTM_MPLG: LOCATED ON MAIN STREET N. FROM WEDGEWOOD LANE NORTH, PROCEEDING
NORTH TO WEAVER LAKE ROAD NORTH.

PERMIT STATUS: ISSUED FOR PERMITTING

DATE:04/18/2023



Know what's below.
Call 811 before you dig.

I hereby certify that this plan, specification, or
report was prepared by me or under my direct
supervision and that I am a duly Licensed
Professional Engineer under the laws of the
State of Minnesota.
TRAVIS JOHN JONES
Signature: Travis Jones
Date: 04/18/2023 license # 54688

PREPARED BY
KLJ ENGINEERING,LLC
370 WABASHA STREET N.
SUITE 300
ST. PAUL, MINNESOTA 55102
PHONE (651)222-2176



LOCATION MAP

N



PROJECT: 2301APTM_MPLG

MAPLE GROVE, MN

CLARIFICATION NO. QUANTITY

C100	
C110	
C120	
C200	
C300	
AER 864	
AER 432	
UG 864	
UG 432	
UG 288	
UG 144	
UG 96	
UG 72	
UG 48	
OVERPULL	
2" HDPE = C100	
HH (24"x36"x24")	
HH (30"x60"x30")	
WARNING SIGN	
ANCHOR/GUY	
AER SLACK LOOP	
SPLICE CLOSURE	
(1) FUSION SPLICE	
(12) RIBBON SPLICE	
FDH	
MST	
MST LENGTH	

MCI
ACCESS TRANSMISSION SERVICES, LLC
OUTSIDE PLANT CONSTRUCTION
TITLE: FIBER OPTIC CABLE ROUTE
2301APTM_MPLG

DATE: 3/31/2023

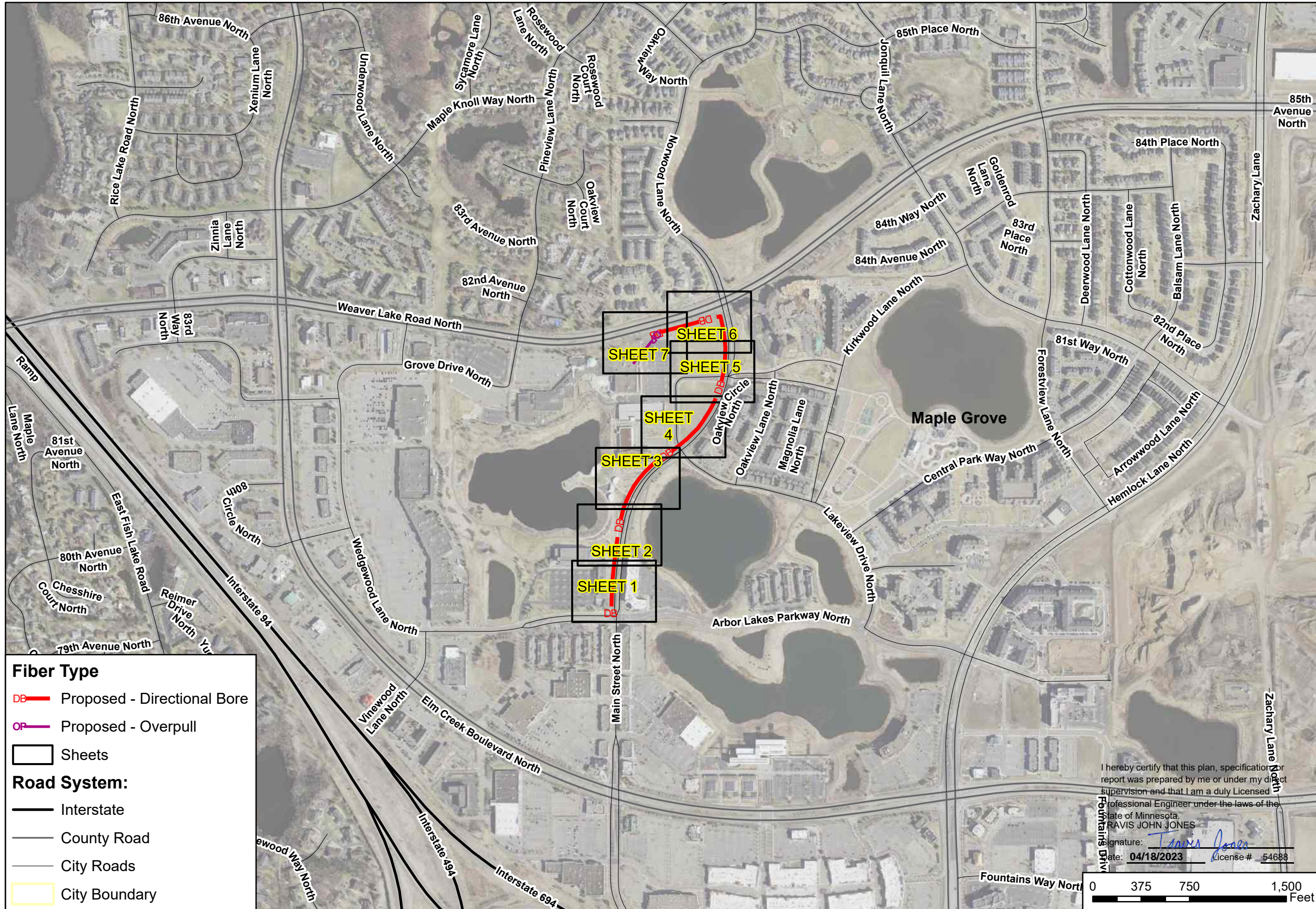
ENGINEER: KLJ

DRAWN BY: K. ZAVORAL

REVISIONS		
DATE	DESCRIPTION	INITIAL

EXCEPT AS MAY BE OTHERWISE PROVIDED BY CONTRACT, THESE DRAWINGS AND SPECIFICATIONS SHALL REMAIN THE PROPERTY OF MCI COMMUNICATIONS SERVICES, INC. BOTH BEING ISSUED IN STRICT CONFIDENCE AND SHALL NOT BE REPRODUCED, COPIED, OR USED FOR ANY PURPOSE WITHOUT SPECIFIC WRITTEN PERMISSION.

SCALE
HORIZONTAL: 1" = 500'
VERTICAL: 1" = 500'
MP ____ TO MP ____
SHEET A-5 OF A-6



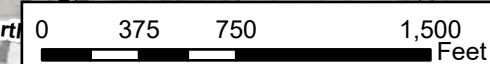
Fiber Type

- DB Proposed - Directional Bore
- OP Proposed - Overpull

Road System:

- Sheets
- Interstate
- County Road
- City Roads
- City Boundary

I hereby certify that this plan, specification or report was prepared by me or under my direct supervision and that I am a duly Licensed Professional Engineer under the laws of the State of Minnesota.
 RAVIS JOHN JONES
 Signature: *Ravis John Jones*
 Date: 04/18/2023 License # 54688



Legend

	DIRECT BURIED HDPE - NEW		HANDHOLE - NEW
	DIRECT BURIED HDPE - EXISTING / PLANNED MCI		HANDHOLE - EXISTING
	AERIAL CABLE - EXISTING / PLANNED MCI FIBER		FDT
	OVERPULL FIBER		CABINET
	PROPOSED - AERIAL		MAN HOLE
	STATION LINE		SLACK LOOP
	RIGHT OF WAY		FIRE HYDRANT
	SECTION LINE		POWER POLE
	PARCEL LINE		SPLICE CLOSURE - NEW
	CITY BOUNDARY LINE		SPLICE CLOSURE - EXISTING
	COUNTY OR STATE BOUNDARY LINE		WARNING SIGN
	SANITARY SEWER LINE		BORE HOLE
	STORM SEWER LINE		UTILITY POT HOLE
	WATER LINE		STORMWATER INLET
	GAS		GAS VALVE
	FIBER OPTIC		WATER VALVE
	POWER		SANITARY MANHOLE
	STREET LIGHTS		STORM MANHOLE
	EMPTY LIGHT CONDUIT		HUB
	DISTRICT ENERGY		TOWER
	CHILLED WATER PIPE		FLOODPLAINS
	HOT WATER PIPE		DNR WETLANDS
	MnDOT ROW		
	RAILROAD		
	CULVERT / DRAINAGE		
	SWPP		

1. UTILITY AND ROW LINES ARE APPROXIMATE. CONTRACTOR SHALL DETERMINE EXACT LOCATIONS PRIOR TO CONSTRUCTION.
2. ALL UNDERGROUND CABLE SHALL BE PLACED AT A MINIMUM DEPTH OF 36" BELOW THE SURFACE UNLESS OTHERWISE NOTED.
3. BORE PITS MAY BE MOVED BASED ON FIELD REVIEWS. THE FINAL AS-BUILT DRAWINGS WILL REFLECT THE FINAL BORE PIT LOCATIONS.
4. ALL UNDERGROUND CABLE SHALL BE PLACED AT A MINIMUM DEPTH OF 48" BELOW PAVEMENT.

I hereby certify that this plan, specification, or report was prepared by me or under my direct supervision and that I am a duly Licensed Professional Engineer under the laws of the State of Minnesota.
 TRAVIS JOHN JONES
 Signature:
 Date: 04/18/2023 License # 54688



PROJECT: 2301APTM_MPLG

MAPLE GROVE, MN

CLARIFICATION NO.	QUANTITY
C100	
C101	
C102	
C104 (24x36)	
C105 (30x60)	
C106	
C107	
C108	
C110	
C111	
C112	
C114	
C115	
C200	
C300	
C301	
C302	
C303	
C304	
C103	

MCImetro
 ACCESS TRANSMISSION SERVICES, LLC

 OUTSIDE PLANT CONSTRUCTION

DATE: 3/29/2023

ENGINEER: KLJ

DRAWN BY: N. WALLENTA

REVISIONS		
DATE:	DESCRIPTION	INITIAL

EXCEPT AS MAY BE OTHERWISE PROVIDED BY CONTRACT, THESE DRAWINGS AND SPECIFICATIONS SHALL REMAIN THE PROPERTY OF MCI COMMUNICATIONS SERVICES, INC., BOTH BEING ISSUED IN STRICT CONFIDENCE AND SHALL NOT BE REPRODUCED, COPIED, OR USED FOR ANY PURPOSE WITHOUT SPECIFIC WRITTEN PERMISSION.

SCALE

HORIZONTAL:

VERTICAL:

MP _____ TO MP _____

SHEET A-6 OF A-6

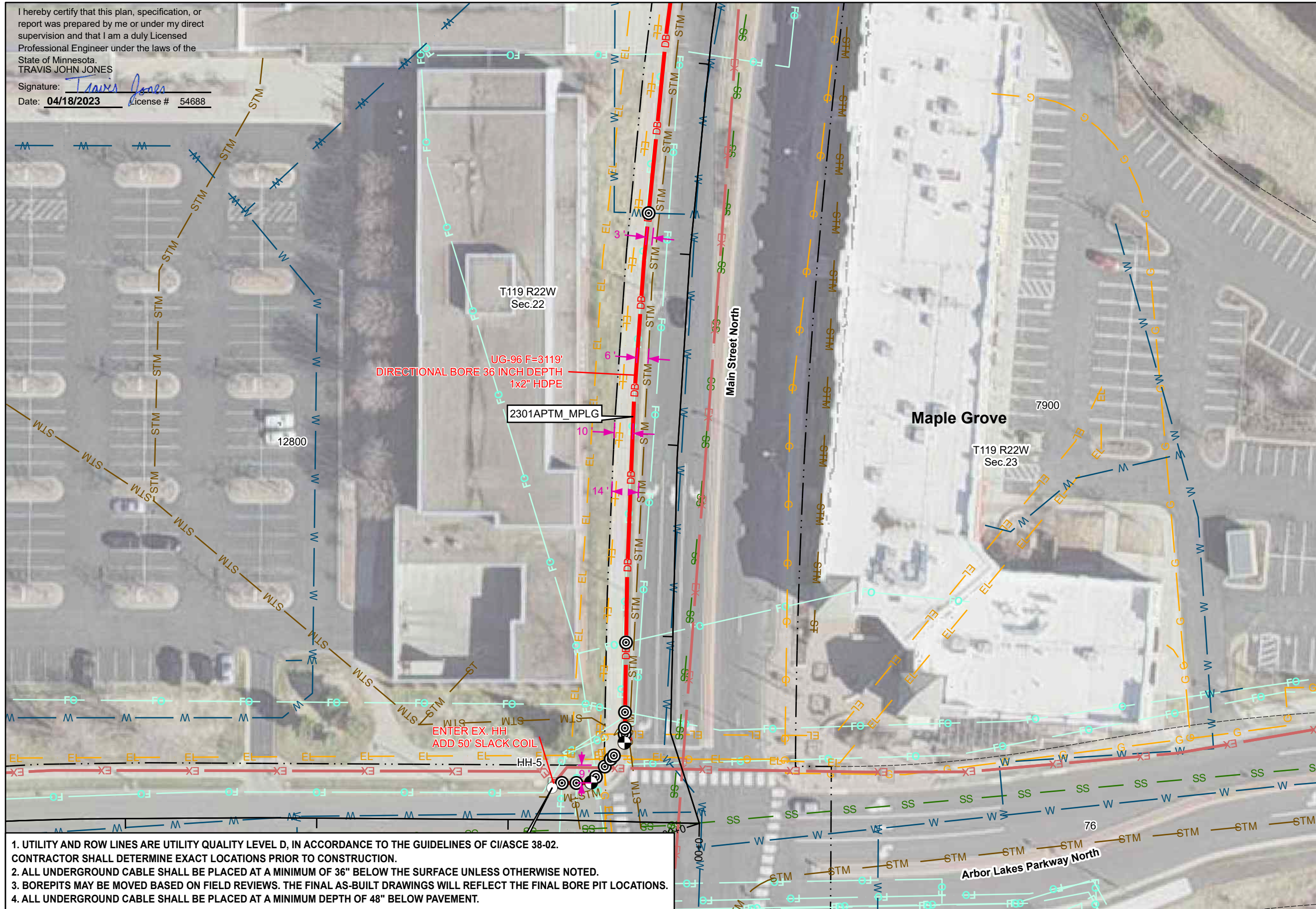
FILE: MPLS_Legend

SEE SHEET 2



I hereby certify that this plan, specification, or report was prepared by me or under my direct supervision and that I am a duly Licensed Professional Engineer under the laws of the State of Minnesota.
 TRAVIS JOHN JONES

Signature: *Travis Jones*
 Date: **04/18/2023** License # 54688



1. UTILITY AND ROW LINES ARE UTILITY QUALITY LEVEL D, IN ACCORDANCE TO THE GUIDELINES OF C/ASCE 38-02. CONTRACTOR SHALL DETERMINE EXACT LOCATIONS PRIOR TO CONSTRUCTION.
2. ALL UNDERGROUND CABLE SHALL BE PLACED AT A MINIMUM OF 36" BELOW THE SURFACE UNLESS OTHERWISE NOTED.
3. BOREPITS MAY BE MOVED BASED ON FIELD REVIEWS. THE FINAL AS-BUILT DRAWINGS WILL REFLECT THE FINAL BORE PIT LOCATIONS.
4. ALL UNDERGROUND CABLE SHALL BE PLACED AT A MINIMUM DEPTH OF 48" BELOW PAVEMENT.



PROJECT: 2301APTM_MPLG

MAPLE GROVE, MN

CLARIFICATION NO.	QUANTITY
C100	
C110	
C120	
C200	
C300	
AER 864	
AER 432	
UG 864	
UG 432	
UG 288	
UG 144	
UG 96	
UG 72	
UG 48	
OVERPULL	
2" HDPE = C100	
HH (24"x36"x24")	
HH (30"x60"x30")	
WARNING SIGN	
ANCHOR/GUY	
AER SLACK LOOP	
SPLICE CLOSURE	
(1) FUSION SPLICE	
(12) RIBBON SPLICE	
FDH	
MST	
MST LENGTH	

MCI
 ACCESS TRANSMISSION SERVICES, LLC

MCI

OUTSIDE PLANT CONSTRUCTION

TITLE: FIBER OPTIC CABLE ROUTE
 2301APTM_MPLG

DATE: 3/31/2023

ENGINEER: KLJ

DRAWN BY: K. ZAVORAL

REVISIONS		
DATE	DESCRIPTION	INITIAL

EXCEPT AS MAY BE OTHERWISE PROVIDED BY CONTRACT, THESE DRAWINGS AND SPECIFICATIONS SHALL REMAIN THE PROPERTY OF MCI COMMUNICATIONS SERVICES, INC. BOTH BEING ISSUED IN STRICT CONFIDENCE AND SHALL NOT BE REPRODUCED, COPIED, OR USED FOR ANY PURPOSE WITHOUT SPECIFIC WRITTEN PERMISSION.

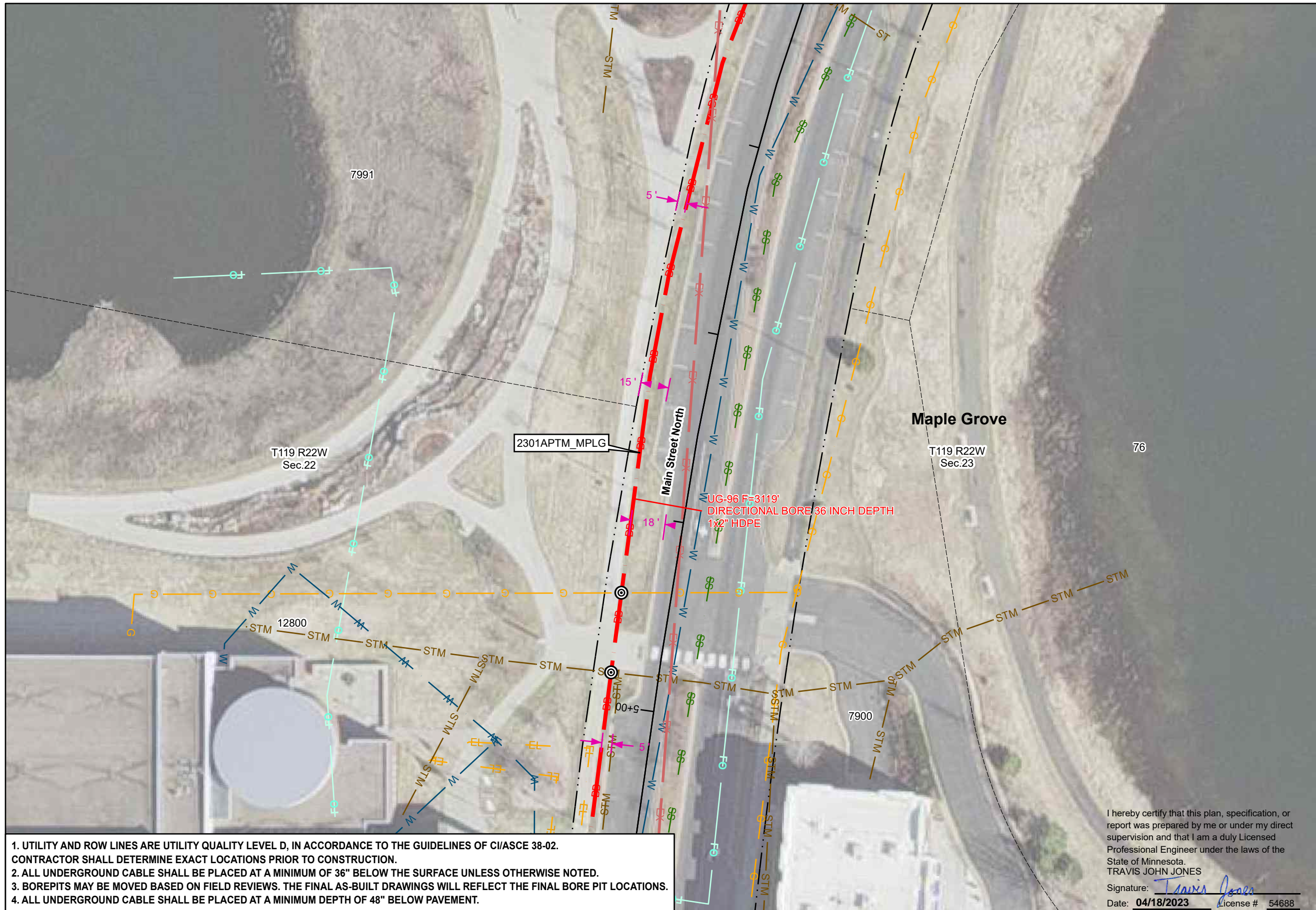
SCALE

HORIZONTAL: 1" = 50'

VERTICAL: 1" = 50'

MP _____ TO MP _____

SHEET 1 OF 7



SEE SHEET 3



PROJECT: 2301APTM_MPLG

MAPLE GROVE, MN

CLARIFICATION NO.	QUANTITY
C100	
C110	
C120	
C200	
C300	
AER 864	
AER 432	
UG 864	
UG 432	
UG 288	
UG 144	
UG 96	
UG 72	
UG 48	
OVERPULL	
2" HDPE = C100	
HH (24"x36"x24")	
HH (30"x60"x30")	
WARNING SIGN	
ANCHOR/GUY	
AER SLACK LOOP	
SPLICE CLOSURE	
(1) FUSION SPLICE	
(12) RIBBON SPLICE	
FDH	
MST	
MST LENGTH	

MCI
ACCESS TRANSMISSION SERVICES, LLC

MCI

OUTSIDE PLANT CONSTRUCTION

TITLE: FIBER OPTIC CABLE ROUTE

2301APTM_MPLG

DATE: 3/31/2023

ENGINEER: KLJ

DRAWN BY: K. ZAVORAL

REVISIONS		
DATE	DESCRIPTION	INITIAL

EXCEPT AS MAY BE OTHERWISE PROVIDED BY CONTRACT, THESE DRAWINGS AND SPECIFICATIONS SHALL REMAIN THE PROPERTY OF MCI COMMUNICATIONS SERVICES, INC., BOTH BEING ISSUED IN STRICT CONFIDENCE AND SHALL NOT BE REPRODUCED, COPIED, OR USED FOR ANY PURPOSE WITHOUT SPECIFIC WRITTEN PERMISSION.

SCALE

HORIZONTAL: 1" = 50'

VERTICAL: 1" = 50'

MP ____ TO MP ____

SHEET 2 OF 7

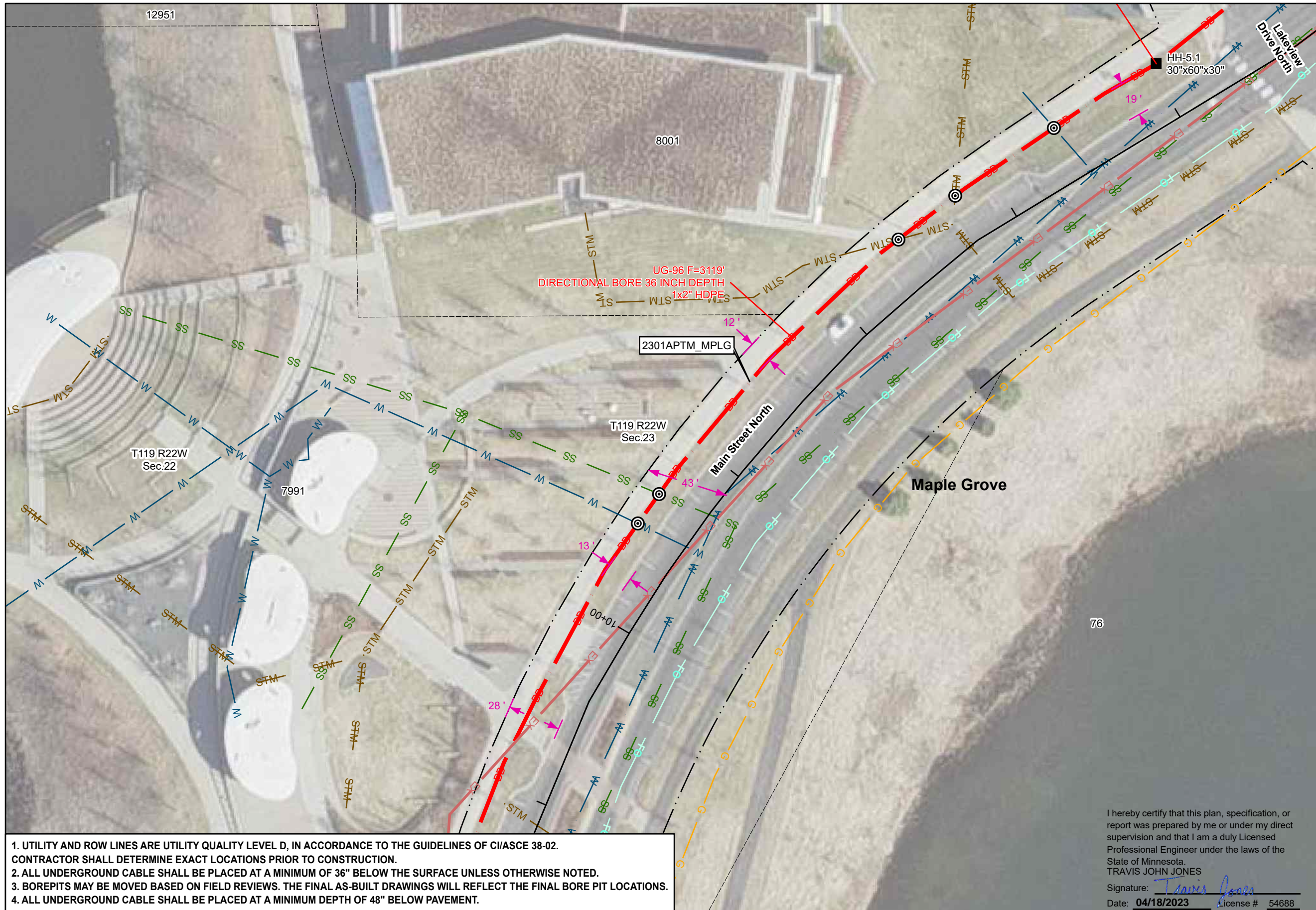
- UTILITY AND ROW LINES ARE UTILITY QUALITY LEVEL D, IN ACCORDANCE TO THE GUIDELINES OF C/ASCE 38-02. CONTRACTOR SHALL DETERMINE EXACT LOCATIONS PRIOR TO CONSTRUCTION.
- ALL UNDERGROUND CABLE SHALL BE PLACED AT A MINIMUM OF 36" BELOW THE SURFACE UNLESS OTHERWISE NOTED.
- BOREPITS MAY BE MOVED BASED ON FIELD REVIEWS. THE FINAL AS-BUILT DRAWINGS WILL REFLECT THE FINAL BORE PIT LOCATIONS.
- ALL UNDERGROUND CABLE SHALL BE PLACED AT A MINIMUM DEPTH OF 48" BELOW PAVEMENT.

I hereby certify that this plan, specification, or report was prepared by me or under my direct supervision and that I am a duly Licensed Professional Engineer under the laws of the State of Minnesota.
TRAVIS JOHN JONES

Signature: *Travis Jones*
Date: 04/18/2023 License # 54688

SEE SHEET 1

SEE SHEET 4



1. UTILITY AND ROW LINES ARE UTILITY QUALITY LEVEL D, IN ACCORDANCE TO THE GUIDELINES OF C/ASCE 38-02. CONTRACTOR SHALL DETERMINE EXACT LOCATIONS PRIOR TO CONSTRUCTION.
2. ALL UNDERGROUND CABLE SHALL BE PLACED AT A MINIMUM OF 36" BELOW THE SURFACE UNLESS OTHERWISE NOTED.
3. BOREPITS MAY BE MOVED BASED ON FIELD REVIEWS. THE FINAL AS-BUILT DRAWINGS WILL REFLECT THE FINAL BORE PIT LOCATIONS.
4. ALL UNDERGROUND CABLE SHALL BE PLACED AT A MINIMUM DEPTH OF 48" BELOW PAVEMENT.

I hereby certify that this plan, specification, or report was prepared by me or under my direct supervision and that I am a duly Licensed Professional Engineer under the laws of the State of Minnesota.
 TRAVIS JOHN JONES
 Signature: *Travis Jones*
 Date: **04/18/2023** License # 54688

SEE SHEET 2



PROJECT: 2301APTM_MPLG

MAPLE GROVE, MN

CLARIFICATION NO.	QUANTITY
C100	
C110	
C120	
C200	
C300	
AER 864	
AER 432	
UG 864	
UG 432	
UG 288	
UG 144	
UG 96	
UG 72	
UG 48	
OVERPULL	
2" HDPE = C100	
HH (24"x36"x24")	
HH (30"x60"x30")	
WARNING SIGN	
ANCHOR/GUY	
AER SLACK LOOP	
SPLICE CLOSURE	
(1) FUSION SPLICE	
(12) RIBBON SPLICE	
FDH	
MST	
MST LENGTH	

MCI
 ACCESS TRANSMISSION SERVICES, LLC
 OUTSIDE PLANT CONSTRUCTION
 TITLE: FIBER OPTIC CABLE ROUTE
 2301APTM_MPLG

DATE: 3/31/2023

ENGINEER: KLJ

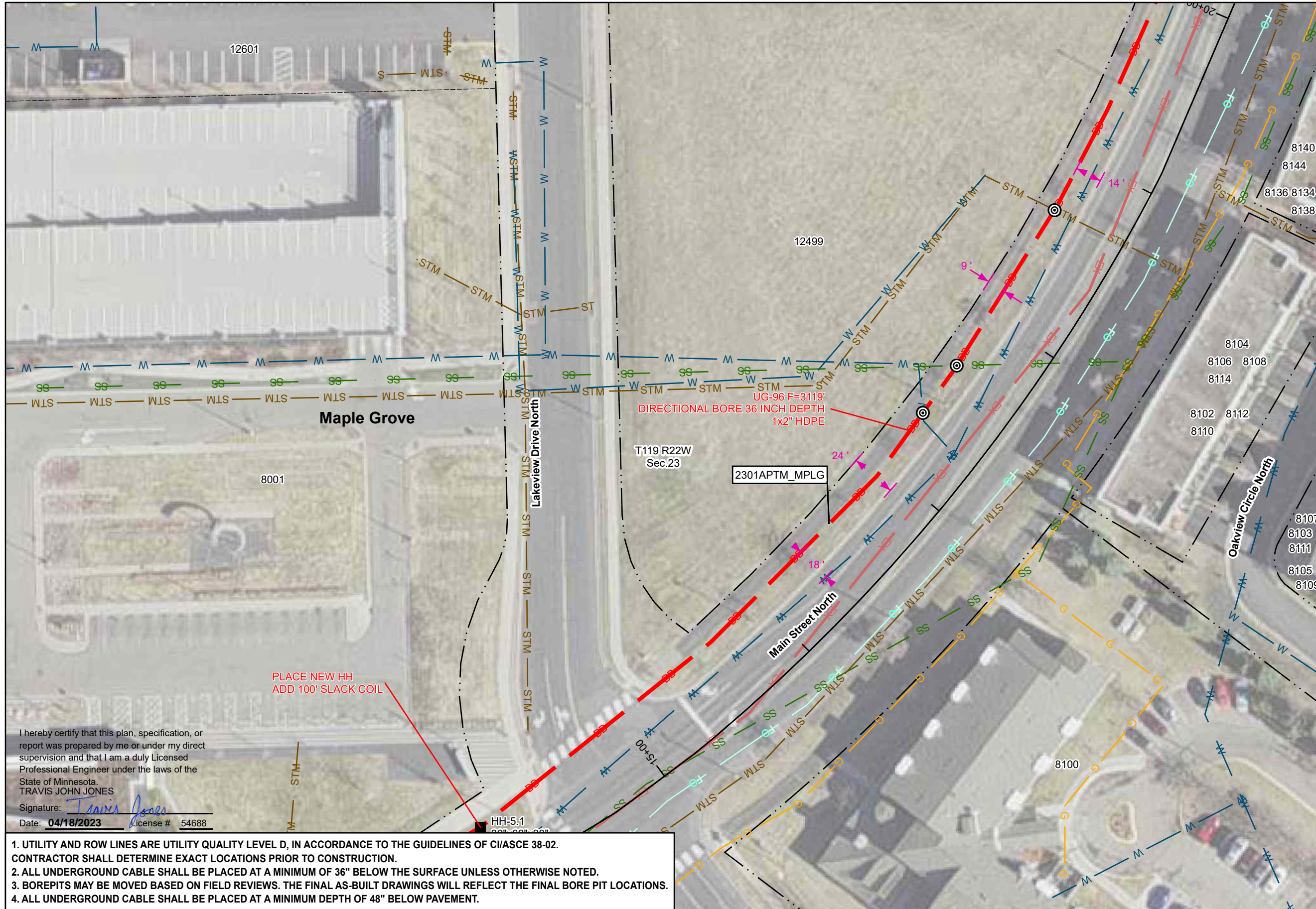
DRAWN BY: K. ZAVORAL

REVISIONS		
DATE	DESCRIPTION	INITIAL

EXCEPT AS MAY BE OTHERWISE PROVIDED BY CONTRACT, THESE DRAWINGS AND SPECIFICATIONS SHALL REMAIN THE PROPERTY OF MCI COMMUNICATIONS SERVICES, INC. BOTH BEING ISSUED IN STRICT CONFIDENCE AND SHALL NOT BE REPRODUCED, COPIED, OR USED FOR ANY PURPOSE WITHOUT SPECIFIC WRITTEN PERMISSION.

SCALE	
HORIZONTAL:	1" = 50'
VERTICAL:	1" = 50'
MP	TO MP
SHEET	3 OF 7

SEE SHEET 5



PROJECT: 2301APTM_MPLG

MAPLE GROVE, MN

CLARIFICATION NO.	QUANTITY
C100	1434
C110	
C120	
C200	
C300	
AER 864	
AER 432	
UG 864	
UG 432	
UG 288	
UG 144	
UG 96	1534
UG 72	
UG 48	
OVERPULL	
2" HDPE = C100	1434
HH (24"x36"x24")	
HH (30"x60"x30")	1
WARNING SIGN	
ANCHOR/GUY	
AER SLACK LOOP	
SPLICE CLOSURE	
(1) FUSION SPLICE	
(12) RIBBON SPLICE	
FDH	
MST	
MST LENGTH	

MCI
ACCESS TRANSMISSION SERVICES, LLC
OUTSIDE PLANT CONSTRUCTION
TITLE: FIBER OPTIC CABLE ROUTE
2301APTM_MPLG

DATE: 3/31/2023

ENGINEER: KLJ

DRAWN BY: K. ZAVORAL

REVISIONS		
DATE	DESCRIPTION	INITIAL

EXCEPT AS MAY BE OTHERWISE PROVIDED BY CONTRACT, THESE DRAWINGS AND SPECIFICATIONS SHALL REMAIN THE PROPERTY OF MCI COMMUNICATIONS SERVICES, INC. BOTH BEING ISSUED IN STRICT CONFIDENCE AND SHALL NOT BE REPRODUCED, COPIED, OR USED FOR ANY PURPOSE WITHOUT SPECIFIC WRITTEN PERMISSION.

SCALE	
HORIZONTAL:	1" = 50'
VERTICAL:	1" = 50'
MP	TO MP
SHEET	4 OF 7

I hereby certify that this plan, specification, or report was prepared by me or under my direct supervision and that I am a duly Licensed Professional Engineer under the laws of the State of Minnesota.
 TRAVIS JOHN JONES
 Signature: *Travis Jones*
 Date: 04/18/2023 License # 54688

- UTILITY AND ROW LINES ARE UTILITY QUALITY LEVEL D, IN ACCORDANCE TO THE GUIDELINES OF C/ASCE 38-02. CONTRACTOR SHALL DETERMINE EXACT LOCATIONS PRIOR TO CONSTRUCTION.
- ALL UNDERGROUND CABLE SHALL BE PLACED AT A MINIMUM OF 36" BELOW THE SURFACE UNLESS OTHERWISE NOTED.
- BOREPITS MAY BE MOVED BASED ON FIELD REVIEWS. THE FINAL AS-BUILT DRAWINGS WILL REFLECT THE FINAL BORE PIT LOCATIONS.
- ALL UNDERGROUND CABLE SHALL BE PLACED AT A MINIMUM DEPTH OF 48" BELOW PAVEMENT.

SEE SHEET 3

SEE SHEET 6



PROJECT: 2301APTM_MPLG

MAPLE GROVE, MN

CLARIFICATION NO.	QUANTITY
C100	
C110	
C120	
C200	
C300	
AER 864	
AER 432	
UG 864	
UG 432	
UG 288	
UG 144	
UG 96	
UG 72	
UG 48	
OVERPULL	
2" HDPE = C100	
HH (24"x36"x24")	
HH (30"x60"x30")	
WARNING SIGN	
ANCHOR/GUY	
AER SLACK LOOP	
SPLICE CLOSURE	
(1) FUSION SPLICE	
(12) RIBBON SPLICE	
FDH	
MST	
MST LENGTH	

MCI
ACCESS TRANSMISSION SERVICES, LLC

MCI
OUTSIDE PLANT CONSTRUCTION

TITLE: FIBER OPTIC CABLE ROUTE
2301APTM_MPLG

DATE: 3/31/2023

ENGINEER: KLJ

DRAWN BY: K. ZAVORAL

REVISIONS		
DATE	DESCRIPTION	INITIAL

EXCEPT AS MAY BE OTHERWISE PROVIDED BY CONTRACT, THESE DRAWINGS AND SPECIFICATIONS SHALL REMAIN THE PROPERTY OF MCI COMMUNICATIONS SERVICES, INC., BOTH BEING ISSUED IN STRICT CONFIDENCE AND SHALL NOT BE REPRODUCED, COPIED, OR USED FOR ANY PURPOSE WITHOUT SPECIFIC WRITTEN PERMISSION.

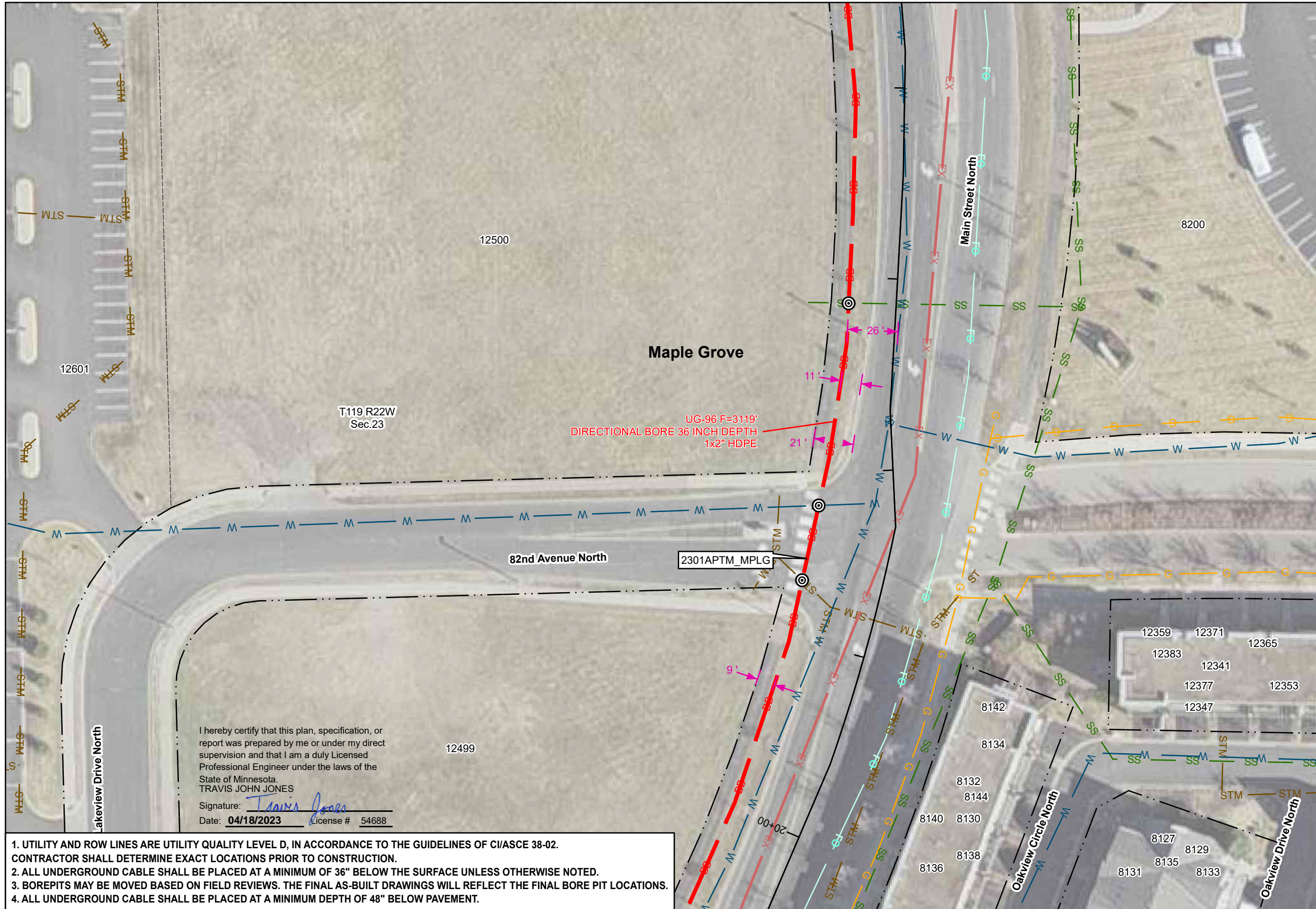
SCALE

HORIZONTAL: 1" = 50'

VERTICAL: 1" = 50'

MP ____ TO MP ____

SHEET 5 OF 7



I hereby certify that this plan, specification, or report was prepared by me or under my direct supervision and that I am a duly Licensed Professional Engineer under the laws of the State of Minnesota.
 TRAVIS JOHN JONES
 Signature: *Travis Jones*
 Date: 04/18/2023 License # 54688

- UTILITY AND ROW LINES ARE UTILITY QUALITY LEVEL D, IN ACCORDANCE TO THE GUIDELINES OF C/ASCE 38-02. CONTRACTOR SHALL DETERMINE EXACT LOCATIONS PRIOR TO CONSTRUCTION.
- ALL UNDERGROUND CABLE SHALL BE PLACED AT A MINIMUM OF 36" BELOW THE SURFACE UNLESS OTHERWISE NOTED.
- BOREPITS MAY BE MOVED BASED ON FIELD REVIEWS. THE FINAL AS-BUILT DRAWINGS WILL REFLECT THE FINAL BORE PIT LOCATIONS.
- ALL UNDERGROUND CABLE SHALL BE PLACED AT A MINIMUM DEPTH OF 48" BELOW PAVEMENT.

SEE SHEET 4



PROJECT: 2301APTM_MPLG

MAPLE GROVE, MN

CLARIFICATION NO.	QUANTITY
C100	1198
C110	
C120	
C200	
C300	
AER 864	
AER 432	
UG 864	
UG 432	
UG 288	
UG 144	
UG 96	1298
UG 72	
UG 48	
OVERPULL	
2" HDPE = C100	1198
HH (24"x36"x24")	
HH (30"x60"x30")	1
WARNING SIGN	
ANCHOR/GUY	
AER SLACK LOOP	
SPLICE CLOSURE	
(1) FUSION SPLICE	
(12) RIBBON SPLICE	
FDH	
MST	
MST LENGTH	

MCI
ACCESS TRANSMISSION SERVICES, LLC

MCI
OUTSIDE PLANT CONSTRUCTION

TITLE: FIBER OPTIC CABLE ROUTE
2301APTM_MPLG

DATE: 3/31/2023

ENGINEER: KLJ

DRAWN BY: K. ZAVORAL

REVISIONS		
DATE	DESCRIPTION	INITIAL

EXCEPT AS MAY BE OTHERWISE PROVIDED BY CONTRACT, THESE DRAWINGS AND SPECIFICATIONS SHALL REMAIN THE PROPERTY OF MCI COMMUNICATIONS SERVICES, INC., BOTH BEING ISSUED IN STRICT CONFIDENCE AND SHALL NOT BE REPRODUCED, COPIED, OR USED FOR ANY PURPOSE WITHOUT SPECIFIC WRITTEN PERMISSION.

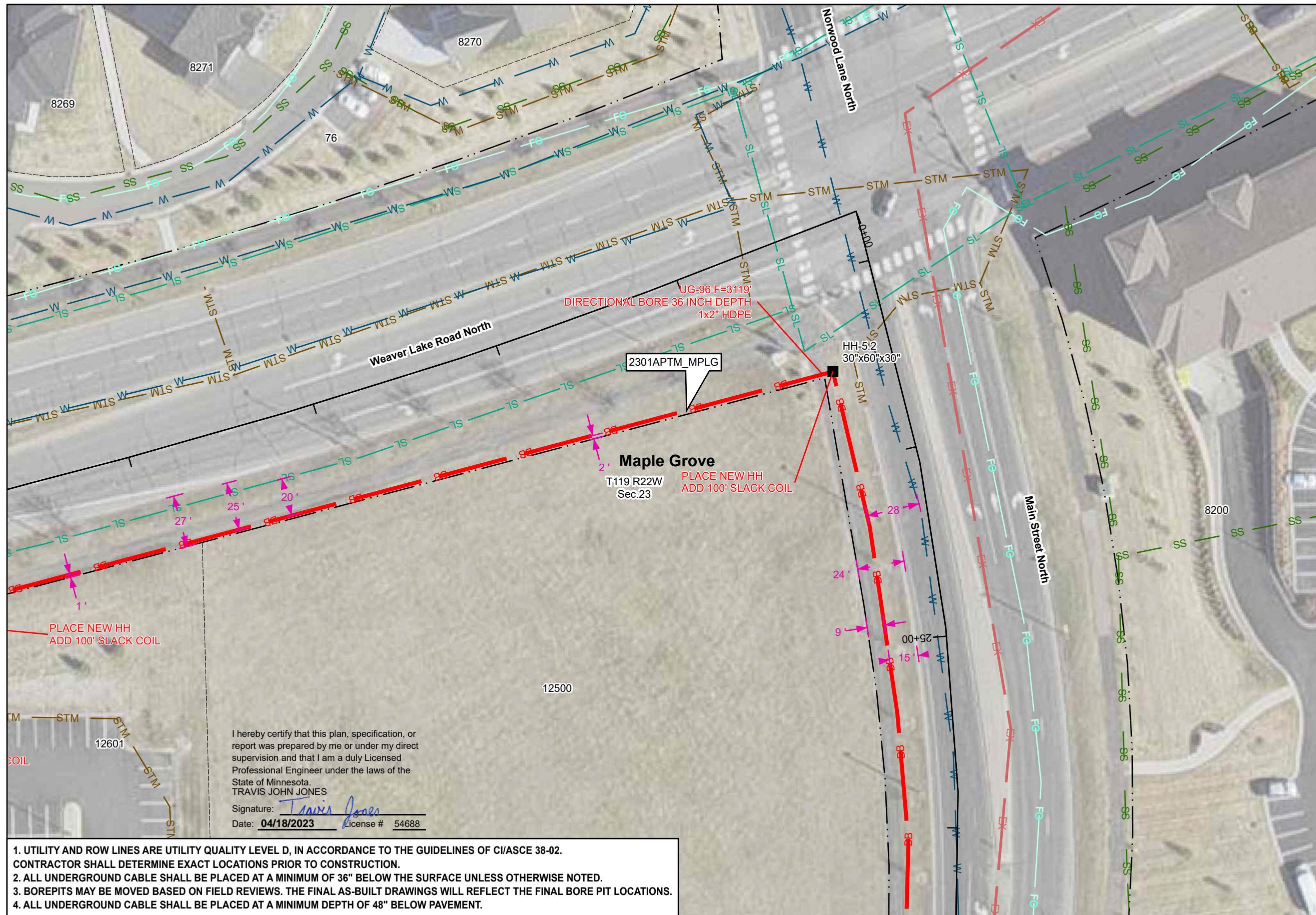
SCALE

HORIZONTAL: 1" = 50'

VERTICAL: 1" = 50'

MP ____ TO MP ____

SHEET 6 OF 7



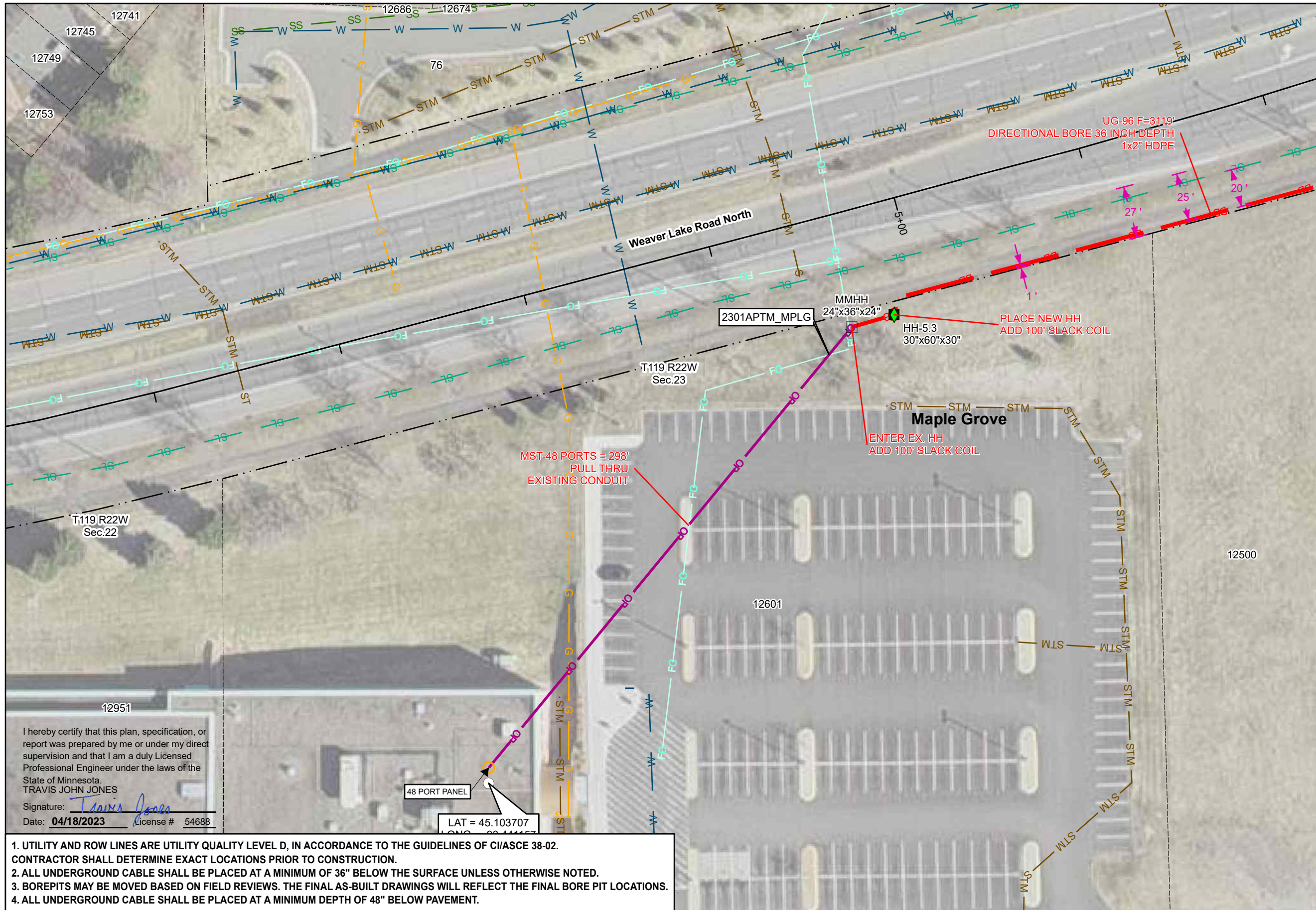
SEE SHEET 7

Maple Grove
T119 R22W Sec.23
PLACE NEW HH
ADD 100' SLACK COIL

I hereby certify that this plan, specification, or report was prepared by me or under my direct supervision and that I am a duly Licensed Professional Engineer under the laws of the State of Minnesota.
TRAVIS JOHN JONES
Signature: *Travis Jones*
Date: **04/18/2023** License # 54688

- UTILITY AND ROW LINES ARE UTILITY QUALITY LEVEL D, IN ACCORDANCE TO THE GUIDELINES OF C/ASCE 38-02. CONTRACTOR SHALL DETERMINE EXACT LOCATIONS PRIOR TO CONSTRUCTION.
- ALL UNDERGROUND CABLE SHALL BE PLACED AT A MINIMUM OF 36" BELOW THE SURFACE UNLESS OTHERWISE NOTED.
- BOREPITS MAY BE MOVED BASED ON FIELD REVIEWS. THE FINAL AS-BUILT DRAWINGS WILL REFLECT THE FINAL BORE PIT LOCATIONS.
- ALL UNDERGROUND CABLE SHALL BE PLACED AT A MINIMUM DEPTH OF 48" BELOW PAVEMENT.

SEE SHEET 5



SEE SHEET 6



PROJECT: 2301APTM_MPLG

MAPLE GROVE, MN

CLARIFICATION NO.	QUANTITY
C100	509
C110	
C120	
C200	
C300	
AER 864	
AER 432	
UG 864	
UG 432	
UG 288	
UG 144	
UG 96	609
UG 72	
UG 48	
OVERPULL	298
2" HDPE = C100	509
HH (24"x36"x24")	
HH (30"x60"x30")	1
WARNING SIGN	
ANCHOR/GUY	
AER SLACK LOOP	
SPLICE CLOSURE	1
(1) FUSION SPLICE	
(12) RIBBON SPLICE	
FDH	
MST	
MST LENGTH	

MCI
 ACCESS TRANSMISSION SERVICES, LLC
 OUTSIDE PLANT CONSTRUCTION
 TITLE: FIBER OPTIC CABLE ROUTE
 2301APTM_MPLG

DATE: 3/31/2023
 ENGINEER: KLJ
 DRAWN BY: K. ZAVORAL

REVISIONS		
DATE	DESCRIPTION	INITIAL

EXCEPT AS MAY BE OTHERWISE PROVIDED BY CONTRACT, THESE DRAWINGS AND SPECIFICATIONS SHALL REMAIN THE PROPERTY OF MCI COMMUNICATIONS SERVICES, INC. BOTH BEING ISSUED IN STRICT CONFIDENCE AND SHALL NOT BE REPRODUCED, COPIED, OR USED FOR ANY PURPOSE WITHOUT SPECIFIC WRITTEN PERMISSION.

SCALE
 HORIZONTAL: 1" = 50'
 VERTICAL: 1" = 50'
 MP ____ TO MP ____
 SHEET 7 OF 7

I hereby certify that this plan, specification, or report was prepared by me or under my direct supervision and that I am a duly Licensed Professional Engineer under the laws of the State of Minnesota.
 TRAVIS JOHN JONES
 Signature: *Travis Jones*
 Date: 04/18/2023 license # 54688

48 PORT PANEL
 LAT = 45.103707
 LONG = 93.144457

- UTILITY AND ROW LINES ARE UTILITY QUALITY LEVEL D, IN ACCORDANCE TO THE GUIDELINES OF C/ASCE 38-02. CONTRACTOR SHALL DETERMINE EXACT LOCATIONS PRIOR TO CONSTRUCTION.
- ALL UNDERGROUND CABLE SHALL BE PLACED AT A MINIMUM OF 36" BELOW THE SURFACE UNLESS OTHERWISE NOTED.
- BOREPITS MAY BE MOVED BASED ON FIELD REVIEWS. THE FINAL AS-BUILT DRAWINGS WILL REFLECT THE FINAL BORE PIT LOCATIONS.
- ALL UNDERGROUND CABLE SHALL BE PLACED AT A MINIMUM DEPTH OF 48" BELOW PAVEMENT.