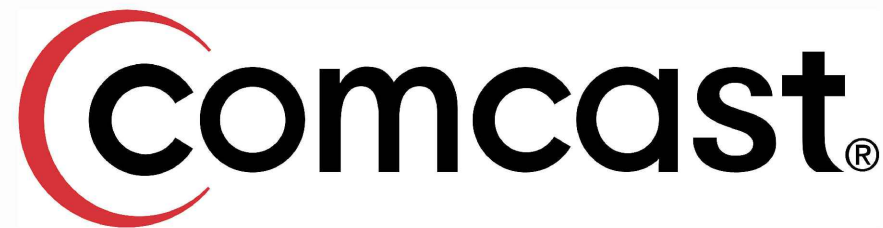




9938 STATE HWY 55 NW
 ANNANDALE, MN 55302
 320-963-2836
mike.laughlin-tr@consulttlr.us



JB1337542 FIBER PULLING MAPLE GROVE, MN

KEY

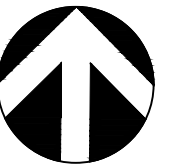
| | |
|--|-----------------------|
| | MP PLAT EASEMENT |
| | TELEPHONE |
| | GAS MAIN |
| | U.G. POWER |
| | EXISTING UNDERGROUD |
| | EXISTING AERIAL POWER |
| | WATER MAIN |
| | SANITARY SEWER |
| | STORM SEWER |
| | STREET LIGHTS |
| | EXISTING FIBER |
| | PROPOSED ROUTE |
| | EDGE OF PAVEMENT |
| | CENTERLINE |
| | RIGHT OF WAY |
| | EXISTING FENCE |
| | RAILROAD TRACK |
| | GUARDRAIL |
| | UTILITY EASEMENT |
| | RETAINING WALL |
| | LANDSCAPE |
| | POND |
| | BUILDING |

LEGEND

| | |
|-------------|-----------------------|
| FOSW | = FRONT OF SIDE-WALK |
| BOC | = BACK OF CURB |
| EOP | = EDGE OF PAVEMENT |
| ORWL | = OFF ROAD WHITE LINE |
| EOGR | = EDGE OF GRAVEL ROAD |
| BPW | = BACK OF WALL |
| BOSW | = BACK OF SIDE-WALK |

LEGEND

| | | | | |
|--|--|--|--|---|
| VAULT H.H. 30x48x36 SMALL H.H. EXISTING EXISTING H.H. EXISTING CATV EXISTING TEL EXISTING POWER NODE CABINET CATV POWER | M & P POLES SIREN POLE POWER POLE TRANS POLE LIGHT POLE LIGHT POLE FLAG POLE POLE ANCHOR | TRAFFIC CONTROL TRAFFIC CONTROL TRAFFIC LIGHT TRAFFIC BUTTON STREET SIGN TREE TREE TREE | RxR CROSSING SIGN RxR SIGNAL RxR CROSSING SIGN RxR CROSSING GATE | MANHOLE MANHOLE BASIN ROUND BASIN FIRE HYDRANT FIBER MARKER GAS MARKER SIGNAL M.H. TELEPHONE M.H. STEAM M.H. ELECTRICAL M.H. GAS M.H. WATER M.H. SAN SEWER M.H. STORM M.H. PUBLIC LIGHTING GAS VALVE WATER VALVE CULVERT |
| GAS METER GAS METER | FIBER SPLICE FIBER AE LOOP FIBER SPLICE FIBER NODE | BOARD SIGN BOARD SIGN ROAD CLOSED | OBJECTS CURB STOP PARKING METER BUS STOP TRASH BENCH STAKE DROP MAIL BOX MAIL BOX | |



NORTH



N/A



9938 STATE HWY 55 NW
ANNANDALE, MN 55302
320-963-2836

mike.laughlin-tlr@consulttlr.us



THE LOCATIONS OF THE UTILITIES SHOWN ON THIS DRAWING ARE IN APPROXIMATE LOCATIONS. TLR CONSULTING INC. HEREBY DISCLAIMS ANY RESPONSIBILITY TO THIRD PARTIES FOR THE ACCURACY OF THIS INFORMATION. PERSONS WORKING IN THE AREA COVERED BY THIS DRAWING MUST CONTACT MINNESOTA'S GOPHER STATE ONE CALL SYSTEM TO ASCERTAIN THE LOCATION OF UNDERGROUND UTILITIES PRIOR TO PERFORMING ANY EXCAVATION.

DESIGN ENGINEER: MICHAEL LAUGHLIN

DRAWN BY: PATRICK EDMONDS

DATE: 4-25-2023

PROJECT NUMBER:

21112023E

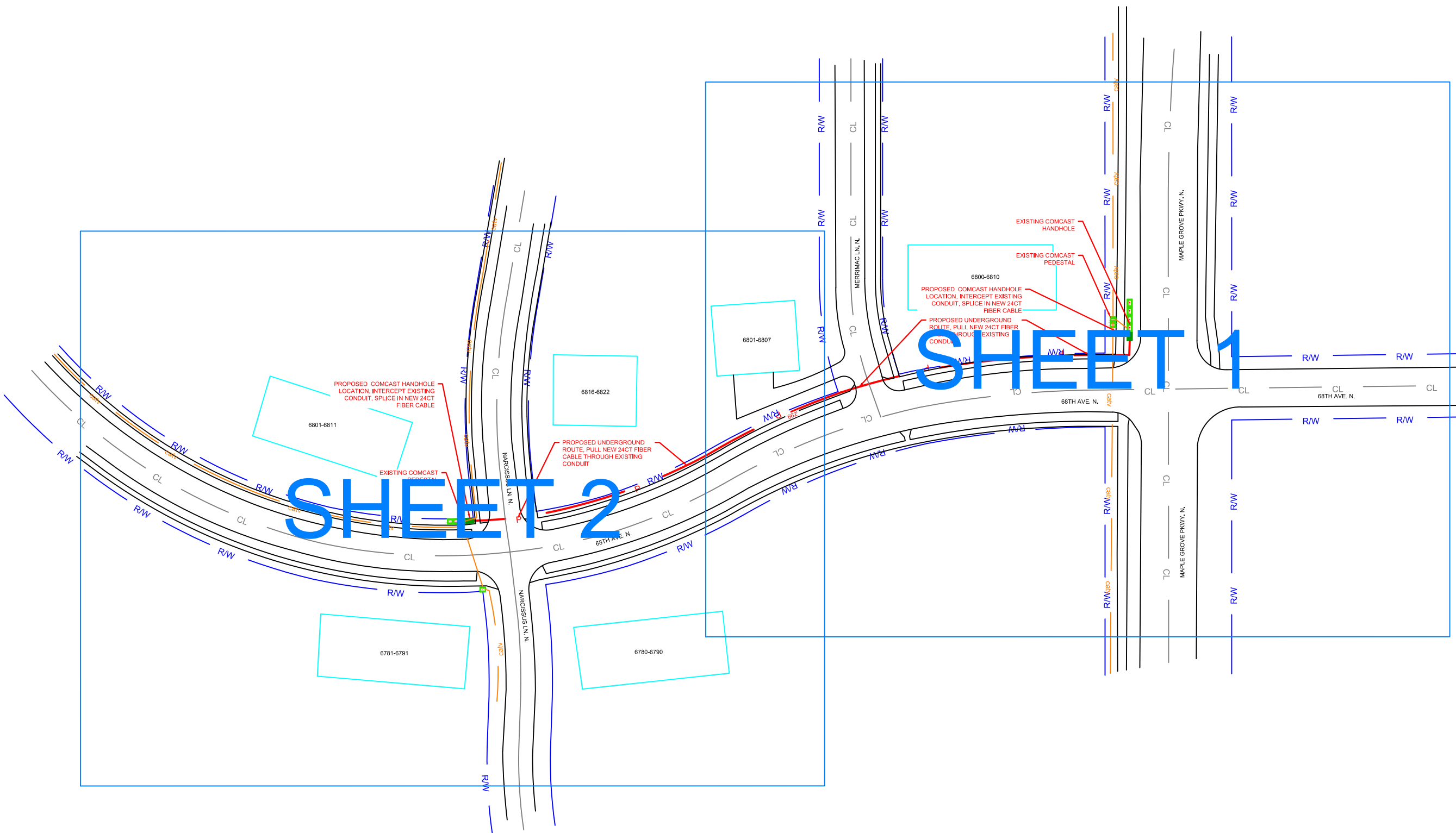
PROJECT NAME:

JB1337542 FIBER PULLING
MAPLE GROVE, MN

SECTION: TOWNSHIP: RANGE:

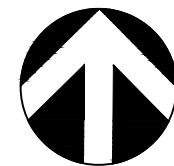
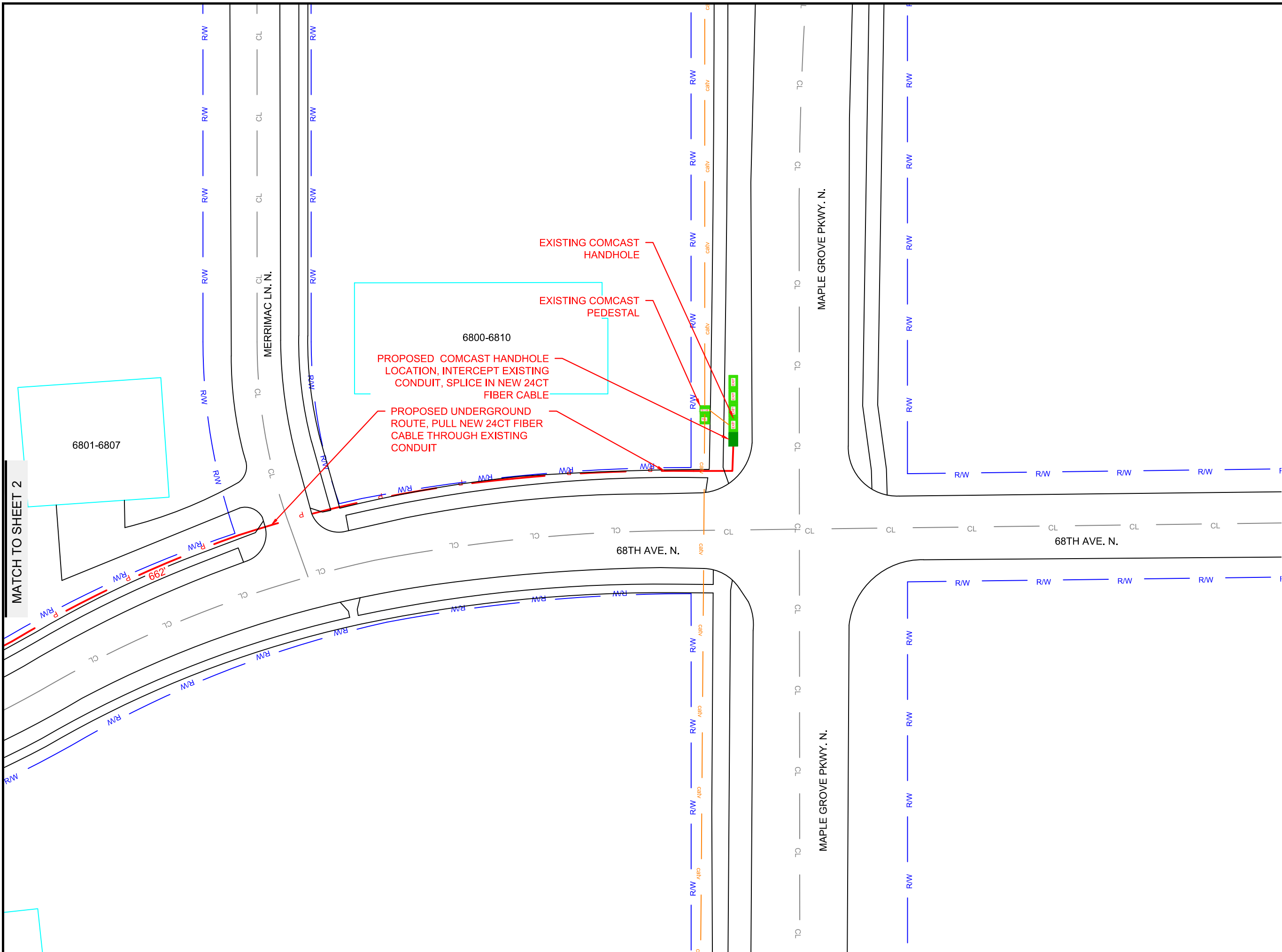
31 119 22

SITE SHEET



SHEET 2

SHEET 1



NORTH



1" = 50'



9938 STATE HWY 55 NW
ANNANDALE, MN 55302
320-963-2836
mike.laughlin-tlr@consulttlr.us



THE LOCATIONS OF THE UTILITIES SHOWN ON THIS DRAWING ARE IN APPROXIMATE LOCATIONS. TLR CONSULTING INC. HEREBY DISCLAIMS ANY RESPONSIBILITY TO THIRD PARTIES FOR THE ACCURACY OF THIS INFORMATION. PERSONS WORKING IN THE AREA COVERED BY THIS DRAWING MUST CONTACT MINNESOTA'S GOPHER STATE ONE CALL SYSTEM TO ASCERTAIN THE LOCATION OF UNDERGROUND UTILITIES PRIOR TO PERFORMING ANY EXCAVATION.

DESIGN ENGINEER: MICHAEL LAUGHLIN

DRAWN BY: PATRICK EDMONDS

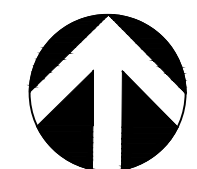
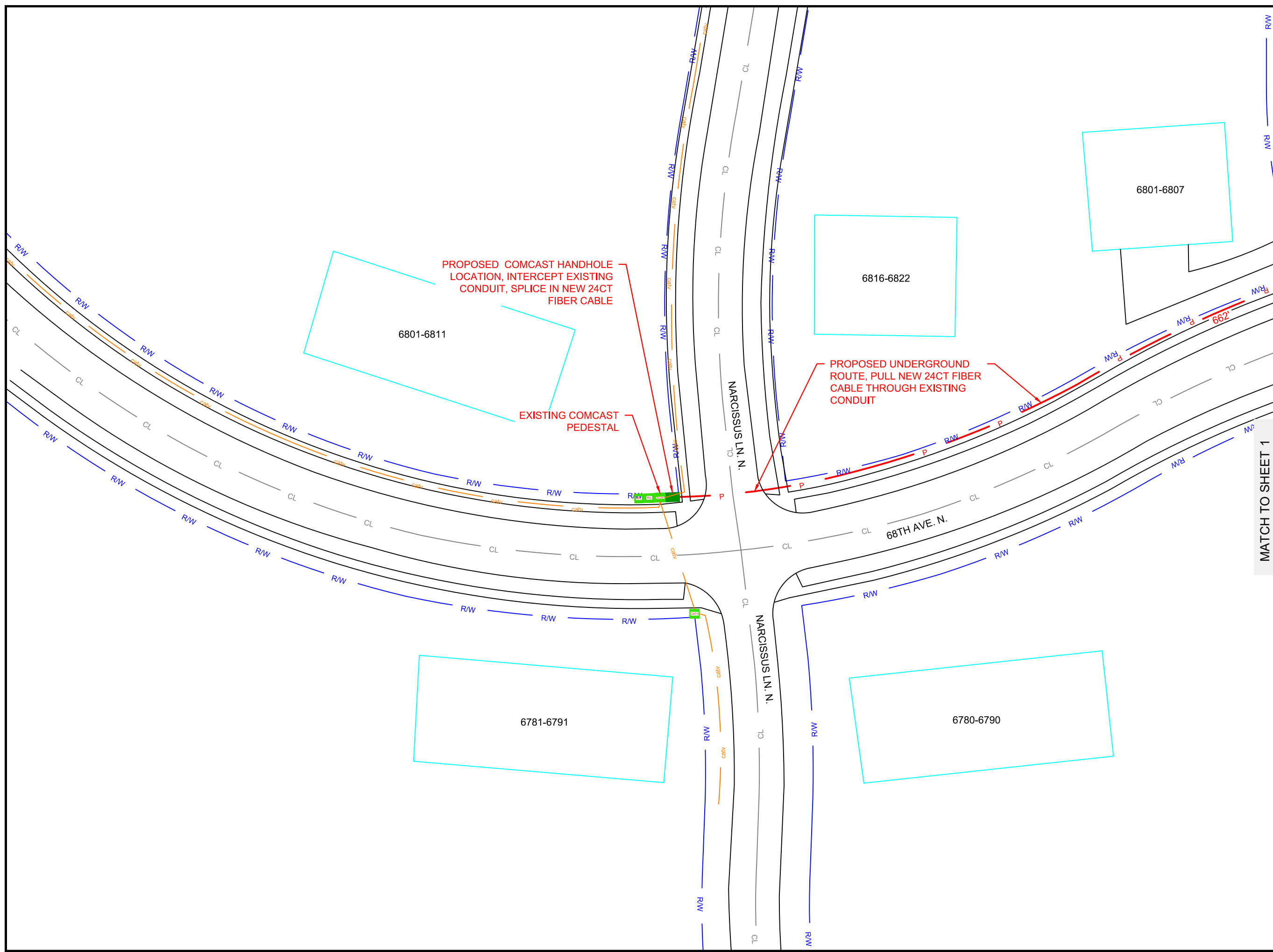
DATE: 4-25-2023

**PROJECT NUMBER:
21112023E**

**PROJECT NAME:
JB1337542 FIBER PULLING
MAPLE GROVE, MN**

SECTION: TOWNSHIP: RANGE:
31 119 22

SHEET 1 OF 2



NORTH



1" = 50'



9938 STATE HWY 55 NW
ANNANDALE, MN 55302
320-963-2836
mike.laughlin-tlr@consulttlr.us

mike.laughlin-tlr@consulttlr.us



MATCH TO SHEET 1

THE LOCATIONS OF THE UTILITIES SHOWN ON THIS DRAWING ARE IN APPROXIMATE LOCATIONS. TLR CONSULTING INC. HEREBY DISCLAIMS ANY RESPONSIBILITY TO THIRD PARTIES FOR THE ACCURACY OF THIS INFORMATION. PERSONS WORKING IN THE AREA COVERED BY THIS DRAWING MUST CONTACT MINNESOTA'S GOPHER STATE ONE CALL SYSTEM TO ASCERTAIN THE LOCATION OF UNDERGROUND UTILITIES PRIOR TO PERFORMING ANY EXCAVATION.

DESIGN ENGINEER: MICHAEL LAUGHLIN
DRAWN BY: PATRICK EDMONDS
DATE: 4-25-2023

**PROJECT NUMBER:
21112023E**

**PROJECT NAME:
JB1337542 FIBER PULLING
MAPLE GROVE, MN**

SECTION: TOWNSHIP: RANGE:
31 119 22

SHEET 2 OF 2