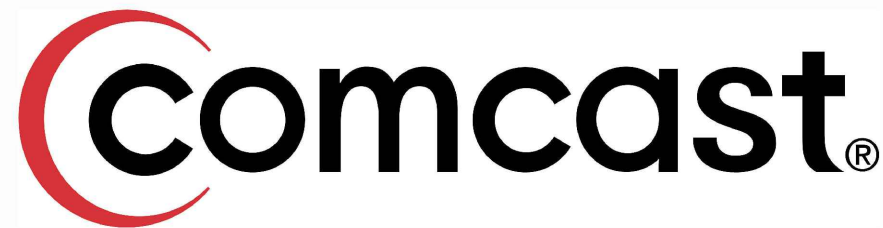




9938 STATE HWY 55 NW  
 ANNANDALE, MN 55302  
 320-963-2836  
[mike.laughlin-tr@consulttlr.us](mailto:mike.laughlin-tr@consulttlr.us)



## JB1276919 FIBER PULLING MAPLE GROVE, MN

### KEY

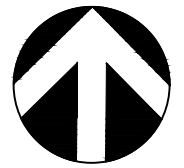
|  |                       |
|--|-----------------------|
|  | MP PLAT EASEMENT      |
|  | TELEPHONE             |
|  | GAS MAIN              |
|  | U.G. POWER            |
|  | EXISTING UNDERGROUD   |
|  | EXISTING AERIAL POWER |
|  | WATER MAIN            |
|  | SANITARY SEWER        |
|  | STORM SEWER           |
|  | STREET LIGHTS         |
|  | EXISTING FIBER        |
|  | PROPOSED ROUTE        |
|  | EDGE OF PAVEMENT      |
|  | CENTERLINE            |
|  | RIGHT OF WAY          |
|  | EXISTING FENCE        |
|  | RAILROAD TRACK        |
|  | GUARDRAIL             |
|  | UTILITY EASEMENT      |
|  | RETAINING WALL        |
|  | LANDSCAPE             |
|  | POND                  |
|  | BUILDING              |

### LEGEND

|             |                       |
|-------------|-----------------------|
| <b>FOSW</b> | = FRONT OF SIDE-WALK  |
| <b>BOC</b>  | = BACK OF CURB        |
| <b>EOP</b>  | = EDGE OF PAVEMENT    |
| <b>ORWL</b> | = OFF ROAD WHITE LINE |
| <b>EOGR</b> | = EDGE OF GRAVEL ROAD |
| <b>BPW</b>  | = BACK OF WALL        |
| <b>BOSW</b> | = BACK OF SIDE-WALK   |

### LEGEND

|  |  |  |  |   |
|--|--|--|--|---|
| <b>VAULT</b><br>H.H. 30x48x36<br>SMALL H.H.<br><b>EXISTING</b><br>EXISTING H.H.<br>EXISTING CATV<br>EXISTING TEL<br>EXISTING POWER<br>NODE CABINET<br>CATV POWER | <b>M &amp; P POLES</b><br>SIREN POLE<br>POWER POLE<br>TRANS POLE<br>LIGHT POLE<br>LIGHT POLE<br>FLAG POLE<br>POLE ANCHOR | <b>TRAFFIC CONTROL</b><br>TRAFFIC CONTROL<br>TRAFFIC LIGHT<br>TRAFFIC BUTTON<br>STREET SIGN<br><br><b>TREE</b><br>TREE<br>TREE | <b>RxR CROSSING SIGN</b><br>RxR SIGNAL<br>RxR CROSSING SIGN<br>RxR CROSSING GATE                                 | <b>MANHOLE</b><br>MANHOLE<br>BASIN<br>ROUND BASIN<br>FIRE HYDRANT<br>FIBER MARKER<br>GAS MARKER<br>SIGNAL M.H.<br>TELEPHONE M.H.<br>STEAM M.H.<br>ELECTRICAL M.H.<br>GAS M.H.<br>WATER M.H.<br>SAN SEWER M.H.<br>STORM M.H.<br>PUBLIC LIGHTING<br>GAS VALVE<br>WATER VALVE<br>CULVERT |
| <b>GAS METER</b><br>GAS METER  | <b>FIBER SPLICE</b><br>FIBER AE LOOP<br>FIBER SPLICE<br>FIBER NODE   | <b>BOARD SIGN</b><br>BOARD SIGN<br>ROAD CLOSED   | <b>OBJECTS</b><br>CURB STOP<br>PARKING METER<br>BUS STOP<br>TRASH<br>BENCH<br>STAKE<br>DROP MAIL BOX<br>MAIL BOX |   |



NORTH



N/A



9938 STATE HWY 55 NW  
ANNANDALE, MN 55302  
320-963-2836

[mike.laughlin-tlr@consulttlr.us](mailto:mike.laughlin-tlr@consulttlr.us)



THE LOCATIONS OF THE UTILITIES SHOWN ON THIS DRAWING ARE IN APPROXIMATE LOCATIONS. TLR CONSULTING INC. HEREBY DISCLAIMS ANY RESPONSIBILITY TO THIRD PARTIES FOR THE ACCURACY OF THIS INFORMATION. PERSONS WORKING IN THE AREA COVERED BY THIS DRAWING MUST CONTACT MINNESOTA'S GOPHER STATE ONE CALL SYSTEM TO ASCERTAIN THE LOCATION OF UNDERGROUND UTILITIES PRIOR TO PERFORMING ANY EXCAVATION.

DESIGN ENGINEER: MICHAEL LAUGHLIN

DRAWN BY: PATRICK EDMONDS

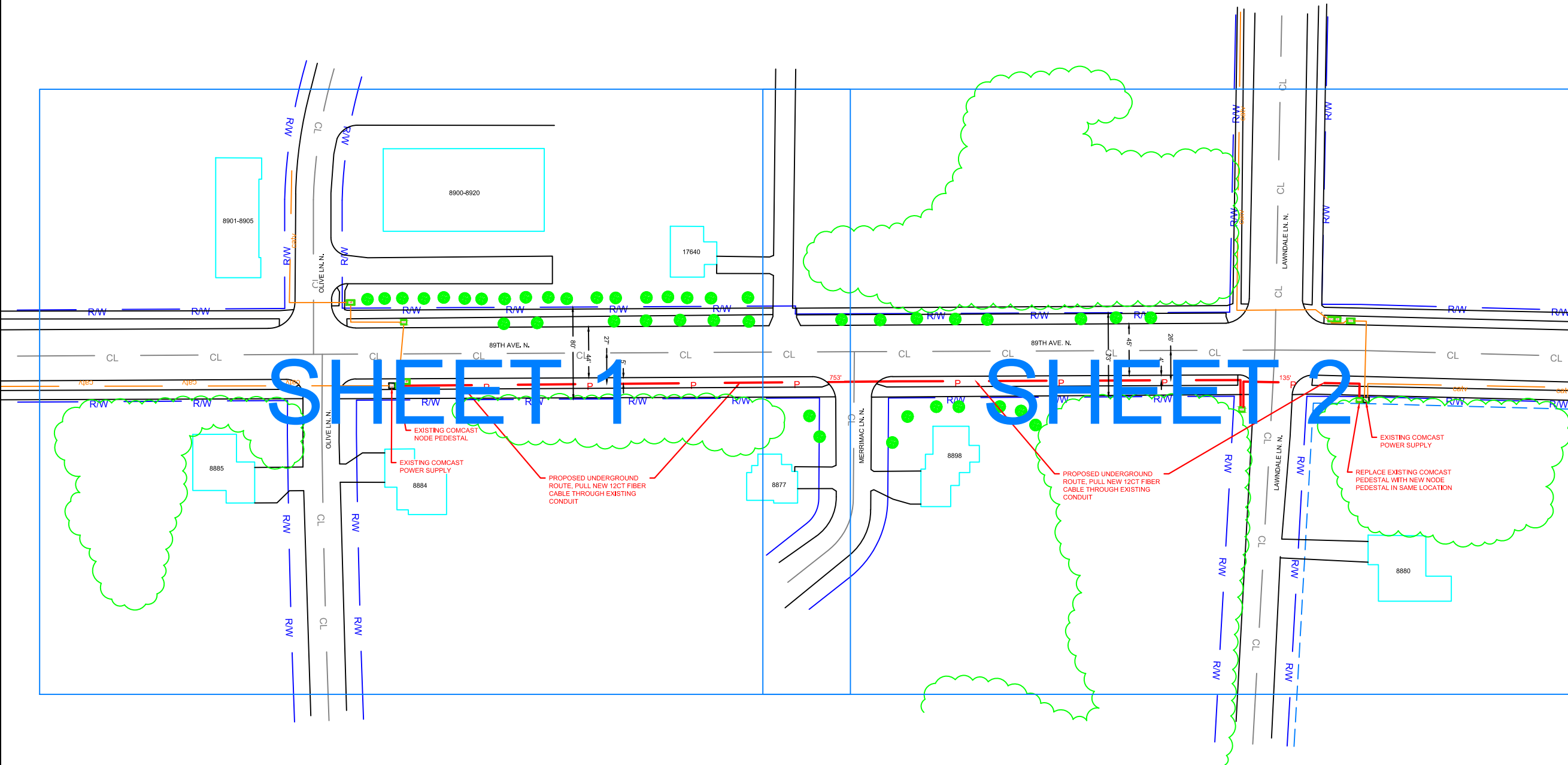
DATE: 4-24-2023

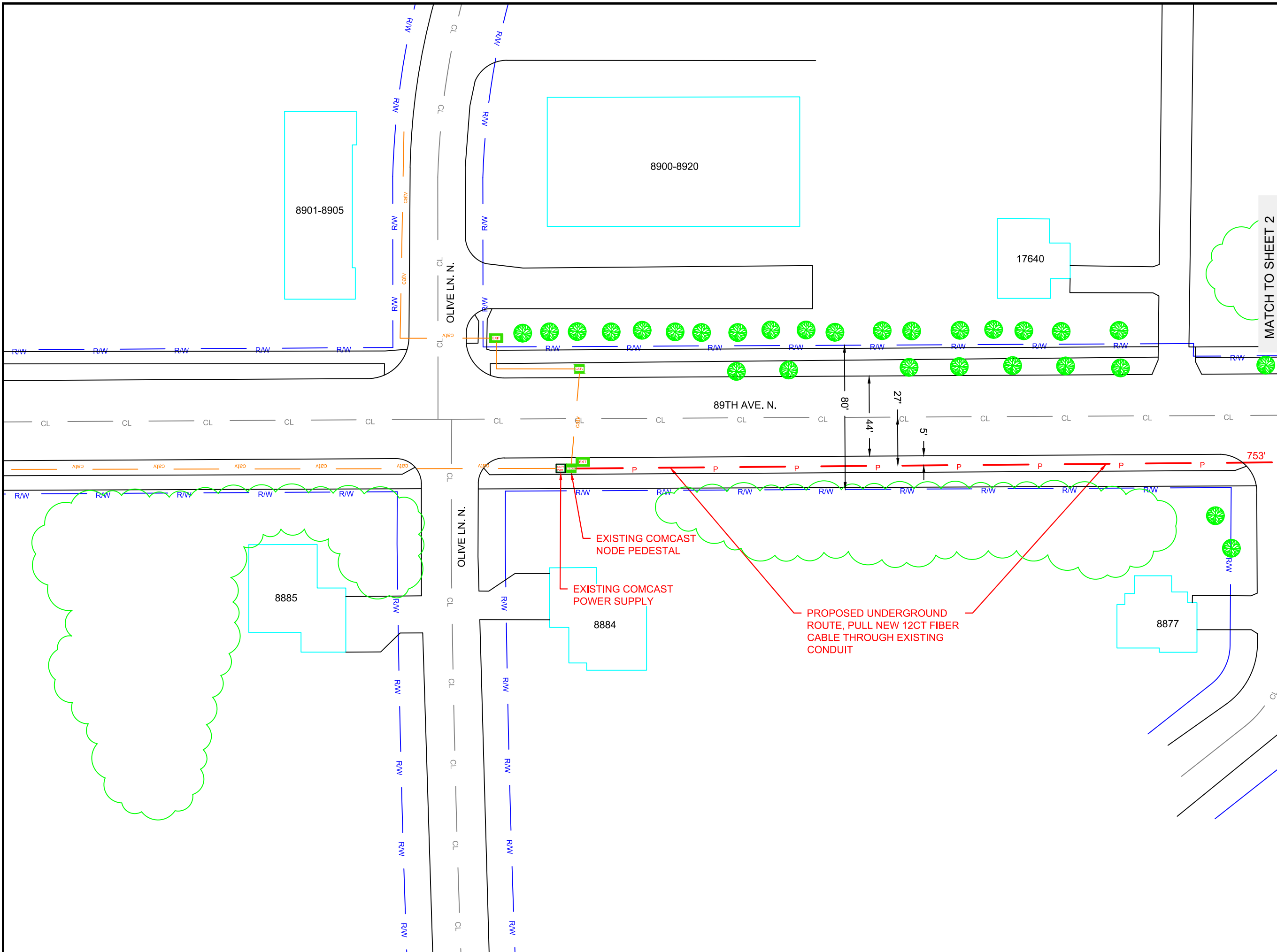
PROJECT NUMBER:  
21112023E

PROJECT NAME:  
JB1276919 FIBER PULLING  
MAPLE GROVE, MN

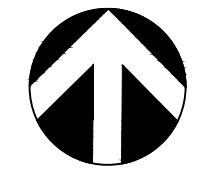
SECTION: TOWNSHIP: RANGE:  
17 119 22

SITE SHEET





MATCH TO SHEET 2



**NORTH**



1" = 50'



9938 STATE HWY 55 NW  
ANNANDALE, MN 55302  
320-963-2836  
[mike.laughlin-tlr@consulttlr.us](mailto:mike.laughlin-tlr@consulttlr.us)



THE LOCATIONS OF THE UTILITIES SHOWN ON THIS DRAWING ARE IN APPROXIMATE LOCATIONS. TLR CONSULTING INC. HEREBY DISCLAIMS ANY RESPONSIBILITY TO THIRD PARTIES FOR THE ACCURACY OF THIS INFORMATION. PERSONS WORKING IN THE AREA COVERED BY THIS DRAWING MUST CONTACT MINNESOTA'S GOPHER STATE ONE CALL SYSTEM TO ASCERTAIN THE LOCATION OF UNDERGROUND UTILITIES PRIOR TO PERFORMING ANY EXCAVATION.

DESIGN ENGINEER: MICHAEL LAUGHLIN  
DRAWN BY: PATRICK EDMONDS  
DATE: 4-24-2023

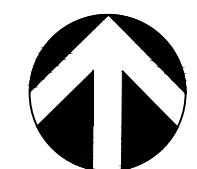
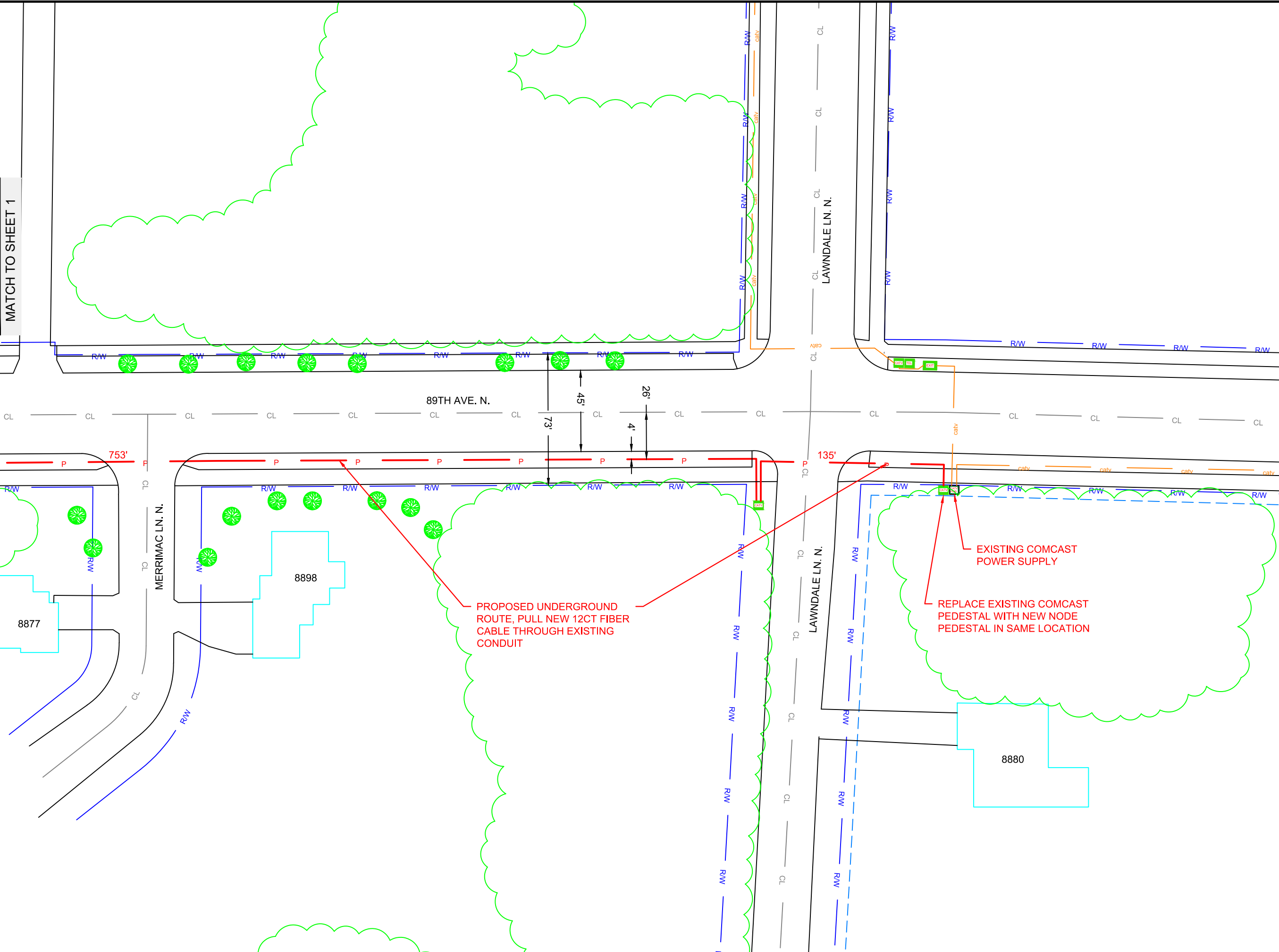
**PROJECT NUMBER:**  
**21112023E**

**PROJECT NAME:**  
JB1276919 FIBER PULLING  
MAPLE GROVE, MN

SECTION: TOWNSHIP: RANGE:  
17 119 22

**SHEET 1 OF 2**

MATCH TO SHEET 1



NORTH



1" = 50'



9938 STATE HWY 55 NW  
ANNANDALE, MN 55302  
320-963-2836  
[mike.laughlin-tlr@consulttlr.us](mailto:mike.laughlin-tlr@consulttlr.us)



THE LOCATIONS OF THE UTILITIES SHOWN ON THIS DRAWING ARE IN APPROXIMATE LOCATIONS. TLR CONSULTING INC. HEREBY DISCLAIMS ANY RESPONSIBILITY TO THIRD PARTIES FOR THE ACCURACY OF THIS INFORMATION. PERSONS WORKING IN THE AREA COVERED BY THIS DRAWING MUST CONTACT MINNESOTA'S GOPHER STATE ONE CALL SYSTEM TO ASCERTAIN THE LOCATION OF UNDERGROUND UTILITIES PRIOR TO PERFORMING ANY EXCAVATION.

DESIGN ENGINEER: MICHAEL LAUGHLIN  
DRAWN BY: PATRICK EDMONDS  
DATE: 4-24-2023

PROJECT NUMBER:  
**21112023E**

PROJECT NAME:  
JB1276919 FIBER PULLING  
MAPLE GROVE, MN

SECTION: TOWNSHIP: RANGE:  
17 119 22

SHEET 2 OF 2