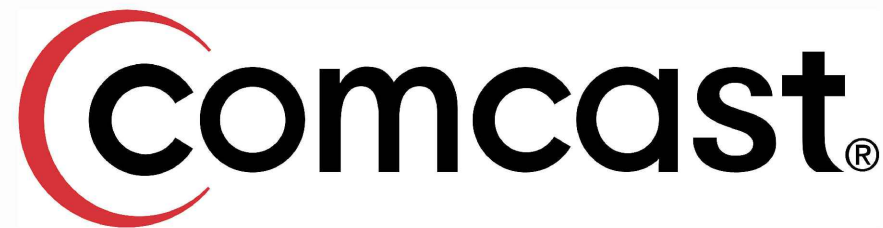




9938 STATE HWY 55 NW
 ANNANDALE, MN 55302
 320-963-2836
mike.laughlin-tr@consulttlr.us



JB1337546 FIBER PULLING MAPLE GROVE, MN

KEY

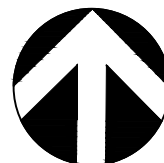
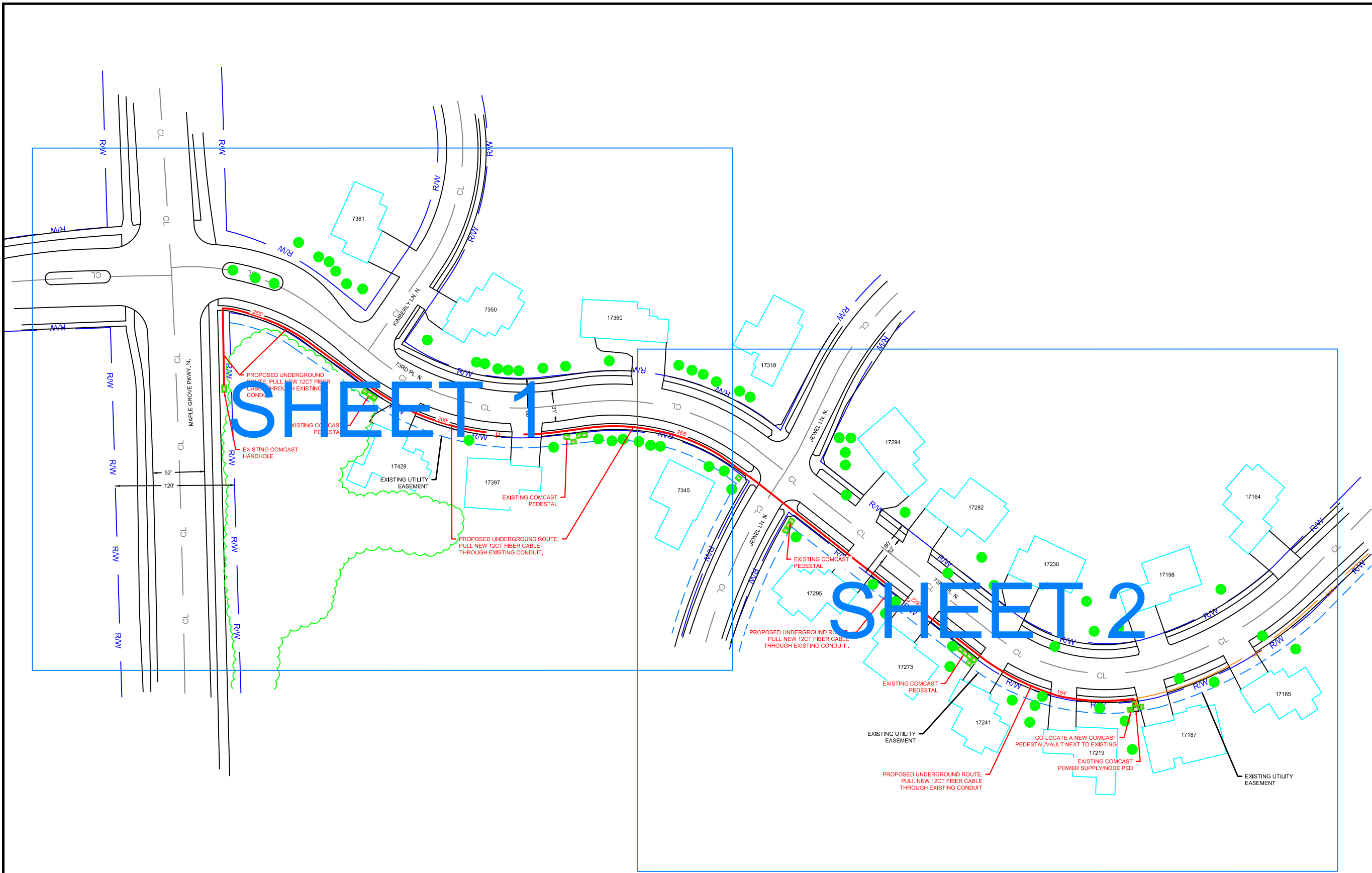
	MP PLAT EASEMENT
	TELEPHONE
	GAS MAIN
	U.G. POWER
	EXISTING UNDERGROUD
	EXISTING AERIAL POWER
	WATER MAIN
	SANITARY SEWER
	STORM SEWER
	STREET LIGHTS
	EXISTING FIBER
	PROPOSED ROUTE
	EDGE OF PAVEMENT
	CENTERLINE
	RIGHT OF WAY
	EXISTING FENCE
	RAILROAD TRACK
	GUARDRAIL
	UTILITY EASEMENT
	RETAINING WALL
	LANDSCAPE
	POND
	BUILDING

LEGEND

FOSW	= FRONT OF SIDE-WALK
BOC	= BACK OF CURB
EOP	= EDGE OF PAVEMENT
ORWL	= OFF ROAD WHITE LINE
EOGR	= EDGE OF GRAVEL ROAD
BPW	= BACK OF WALL
BOSW	= BACK OF SIDE-WALK

LEGEND

VAULT H.H. 30x48x36 SMALL H.H. EXISTING EXISTING H.H. EXISTING CATV EXISTING TEL EXISTING POWER NODE CABINET CATV POWER	M & P POLES SIREN POLE POWER POLE TRANS POLE LIGHT POLE LIGHT POLE FLAG POLE POLE ANCHOR	TRAFFIC CONTROL TRAFFIC CONTROL TRAFFIC LIGHT TRAFFIC BUTTON STREET SIGN TREE TREE TREE	RxR CROSSING SIGN RxR SIGNAL RxR CROSSING SIGN RxR CROSSING GATE	MANHOLE MANHOLE BASIN ROUND BASIN FIRE HYDRANT FIBER MARKER GAS MARKER SIGNAL M.H. TELEPHONE M.H. STEAM M.H. ELECTRICAL M.H. GAS M.H. WATER M.H. SAN SEWER M.H. STORM M.H. PUBLIC LIGHTING GAS VALVE WATER VALVE CULVERT
GAS METER GAS METER	FIBER SPLICE FIBER AE LOOP FIBER SPLICE FIBER NODE	BOARD SIGN BOARD SIGN ROAD CLOSED	OBJECTS CURB STOP PARKING METER BUS STOP TRASH BENCH STAKE DROP MAIL BOX MAIL BOX	



NORTH



N/A



9938 STATE HWY 55 NW
ANNANDALE, MN 55302
320-963-2836
mike.laughlin-tlr@consulttlr.us



THE LOCATIONS OF THE UTILITIES SHOWN ON THIS DRAWING ARE IN APPROXIMATE LOCATIONS. TLR CONSULTING INC. HEREBY DISCLAIMS ANY RESPONSIBILITY TO THIRD PARTIES FOR THE ACCURACY OF THIS INFORMATION. PERSONS WORKING IN THE AREA COVERED BY THIS DRAWING MUST CONTACT MINNESOTA'S GOPHER STATE ONE CALL SYSTEM TO ASCERTAIN THE LOCATION OF UNDERGROUND UTILITIES PRIOR TO PERFORMING ANY EXCAVATION.

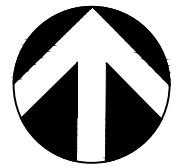
DESIGN ENGINEER: MICHAEL LAUGHLIN
DRAWN BY: PATRICK EDMONDS
DATE: 4-11-2023

PROJECT NUMBER:
21112023E

PROJECT NAME:
JB1337546 FIBER PULLING
MAPLE GROVE, MN

SECTION: TOWNSHIP: RANGE:
29 119 22

SITE SHEET



NORTH



1" = 50'



9938 STATE HWY 55 NW
ANNANDALE, MN 55302
320-963-2836
mike.laughlin-tlr@consulttlr.us



THE LOCATIONS OF THE UTILITIES SHOWN ON THIS DRAWING ARE IN APPROXIMATE LOCATIONS. TLR CONSULTING INC. HEREBY DISCLAIMS ANY RESPONSIBILITY TO THIRD PARTIES FOR THE ACCURACY OF THIS INFORMATION. PERSONS WORKING IN THE AREA COVERED BY THIS DRAWING MUST CONTACT MINNESOTA'S GOPHER STATE ONE CALL SYSTEM TO ASCERTAIN THE LOCATION OF UNDERGROUND UTILITIES PRIOR TO PERFORMING ANY EXCAVATION.

DESIGN ENGINEER: MICHAEL LAUGHLIN

DRAWN BY: PATRICK EDMONDS

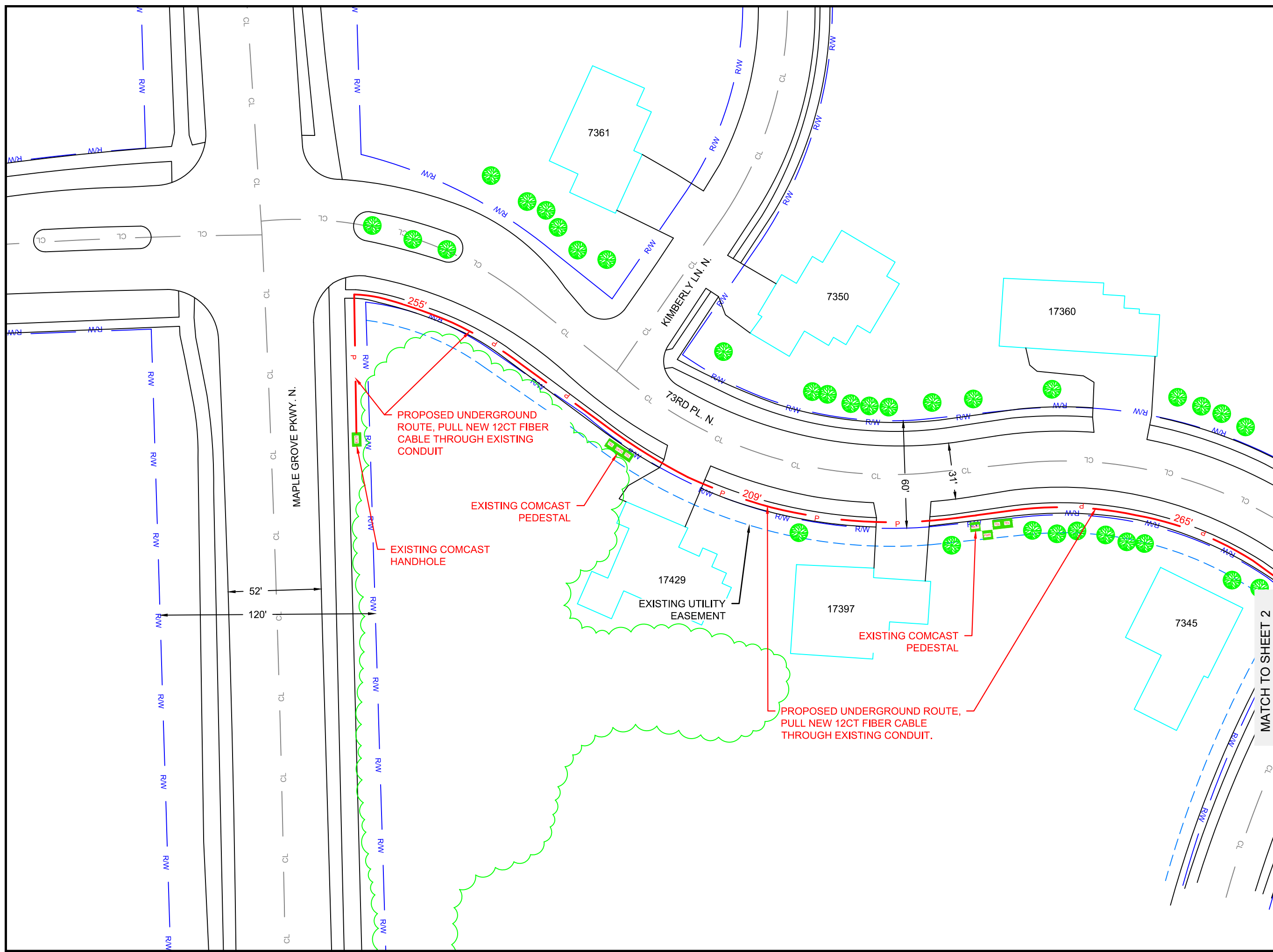
DATE: 4-11-2023

PROJECT NUMBER:
21112023E

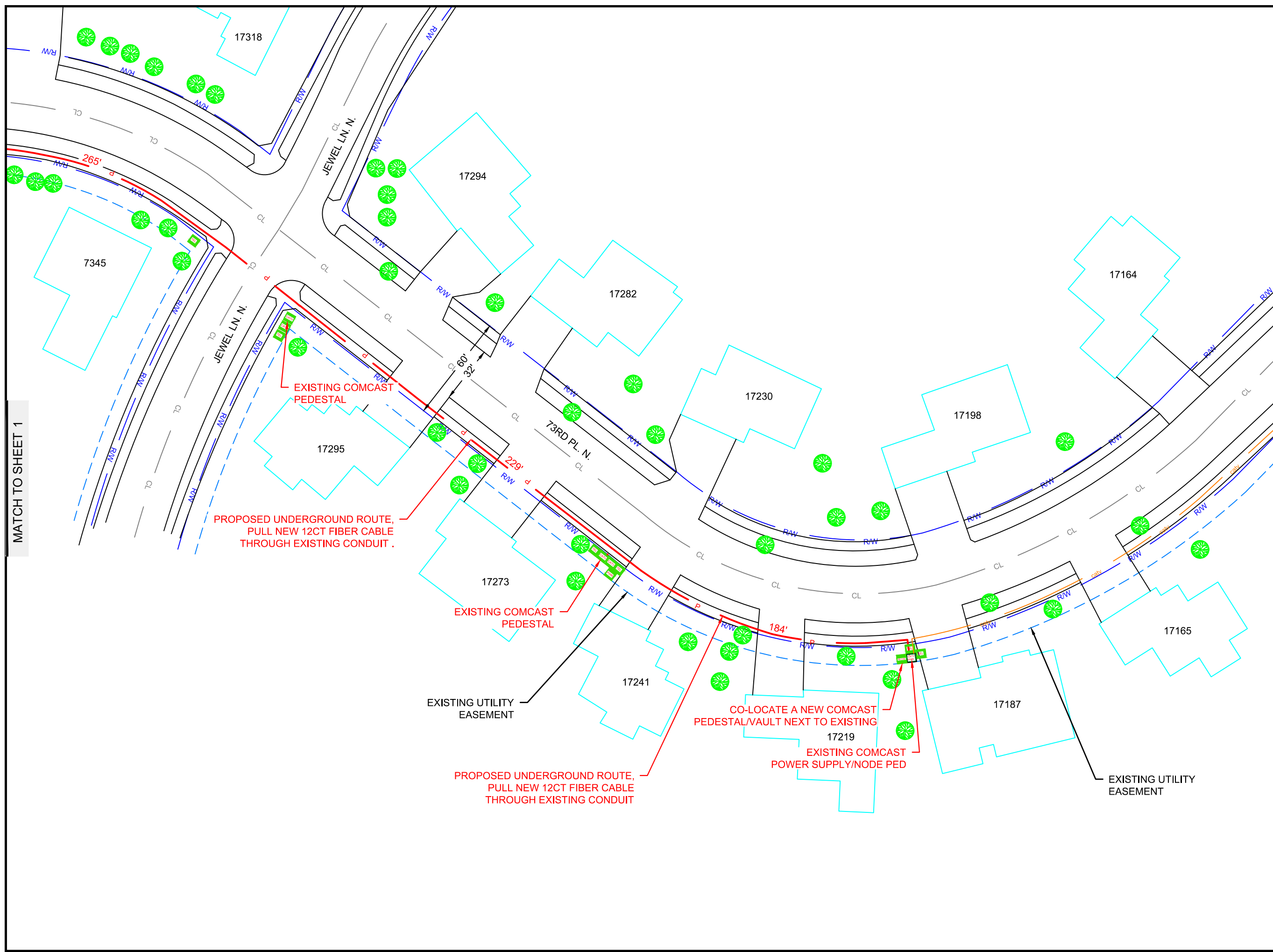
PROJECT NAME:
JB1337546 FIBER PULLING
MAPLE GROVE, MN

SECTION: TOWNSHIP: RANGE:
29 119 22

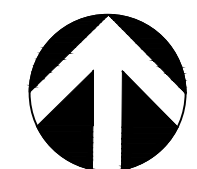
SHEET 1 OF 2



MATCH TO SHEET 2



MATCH TO SHEET 1



NORTH



1" = 50'



9938 STATE HWY 55 NW
ANNANDALE, MN 55302
320-963-2836
mike.laughlin-tlr@consulttlr.us



THE LOCATIONS OF THE UTILITIES SHOWN ON THIS DRAWING ARE IN APPROXIMATE LOCATIONS. TLR CONSULTING INC. HEREBY DISCLAIMS ANY RESPONSIBILITY TO THIRD PARTIES FOR THE ACCURACY OF THIS INFORMATION. PERSONS WORKING IN THE AREA COVERED BY THIS DRAWING MUST CONTACT MINNESOTA'S GOPHER STATE ONE CALL SYSTEM TO ASCERTAIN THE LOCATION OF UNDERGROUND UTILITIES PRIOR TO PERFORMING ANY EXCAVATION.

DESIGN ENGINEER: MICHAEL LAUGHLIN
DRAWN BY: PATRICK EDMONDS
DATE: 4-11-2023

PROJECT NUMBER:
21112023E

PROJECT NAME:
JB1337546 FIBER PULLING
MAPLE GROVE, MN

SECTION: TOWNSHIP: RANGE:
29 119 22

SHEET 2 OF 2