

CONSTRUCTION NOTES

Obtain Construction Plans from Designer prior to starting job.
 Coordinate with Contractor / Engineering Firm for exact locations of proposed structures and facilities prior to installation of gas facilities.
 Install new main as shown or as directed in field at time of installation. Contact Engineering for approval of field generated changes.
 Long side mains and services to be installed below proposed sub-cuts (See Construction Plans).
 All test points should be installed in the boulevard or other acceptable locations and avoid placement in driving lanes.
 Verify Coating test results if required prior to abandoning main.
CONSTRUCTION PROCEDURES
 Install, Clean and Test, and Put in Service; Proposed new main per CenterPoint Energy Construction and Services Manual.
 Procedure for tapping or making tie-ins to existing gas mains: Verify existing gas main size, type, and location prior to tapping or making tie-in. Monitor and verify, using a pressure gauge, existing gas main Pressure Class within the bell hole of tap location or tie-in location prior to tapping or making tie-in.
 Purge new main until essentially 100% reading is obtained on Combustible Gas Indicator. See CenterPoint Energy Construction and Service Manual Section CS-B-1.230 for purging mains into service.
 Complete all Service / Meter Work as directed. (See Service Survey)
 See Abandonment Procedures for abandonment and purging procedures.
 Install a marker ball at a new end of main, at a valve, at each ell of a horizontal offset, at road crossings and at any fitting or pressure control identified as needing to be located in the future. Refer to CenterPoint Energy Construction and Service Manual section CS-B-1.310 for installation procedures.

ABANDONMENT PROCEDURES

See Construction Procedures for installation of mains and services prior to abandonments.
 This project includes work on one-way feed mains.
 Ensure all proposed main is in service, all taps are completed and all services have been transferred to new main prior to abandonments.
 Cut and Abandon existing main as shown. Purge abandoned mains until essentially 0% gas reading is obtained on Combustible Gas Indicator. See CenterPoint Energy Construction and Service Manual Section CS-B-1.110 and Section CS-B-1.230 for purging mains out of service using air movers.
 Contact Engineering with questions.

NOTE: BORE ALL PAVED STREETS AND DRIVEWAYS

Minimum depth requirements for crossings of state highways and county roads is 60". Minimum depth requirements for crossings of city streets and township roads is 48".
 Minimum depth for parallel installations on state highways and county roads is 36". Minimum depth for parallel installations on city streets and township roads is 30". All steel pipe welds to be coated with 2 part epoxy.
 When butt fusing to existing in-service polyethylene, visually inspect for the presence of hydrocarbon permeation immediately after removing fusion iron. If any bubbling is identified on the heated surface, do not join to new PE pipe. Allow to cool and cut this end off (12" length) and send to the Golden Valley Lab with street location and W.D.#. Complete tie-in/extension using an electrofusion coupling(s).
 Document in field notes.
Pipe < 4-inches Diameter (Unregulated PCB area):
 Project area cleared for internal impacts. Pipe being removed is unregulated for disposal if coating does not exist or is non-asbestos. Refer to CNP Construction and Service Manual (CS-B-1.110, CS-B-1.330, and CS-B-1.100, for pipe to be abandoned.



MINNESOTA REGION
 PROPRIETARY AND CONFIDENTIAL
PROJECT #: 105724287
 M52900 MAPLE GROVE

ONE CALL:
 Hennepin
 *SW6 T119/R22
 *NW6 T119/R22
 *NE6 T119/R22
 *SE6 T119/R22
 * = this Page

LEGEND:
 - ACTIVE MAIN
 - DESIGNED MAIN
 - PROPOSED/ABANDONED/
 - OUT OF SERVICE MAIN
 - ABANDONED/
 - OUT OF SERVICE MAIN

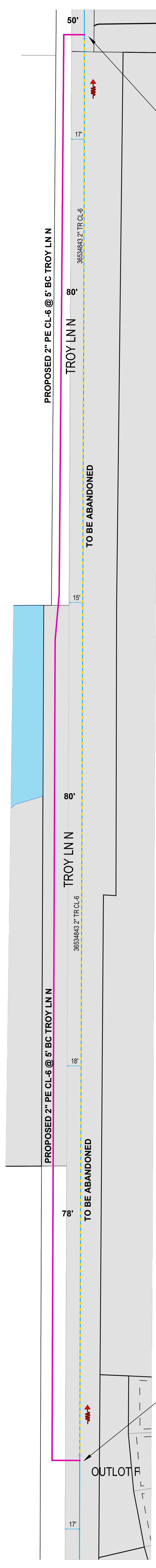
PIPE REQUIRED:
 1910' 2" PE CL-6
 1910' PIPE

PROPOSED ABANDONED PIPE:
 1830' 2" TR CL-6
 1830' PIPE

COPIES:
 PIPELINE INTEGRITY PACKET: N
 STATION MANAGER: N
 DD NUMBER: N/A
 CORROSION: PATRICK CARLSON
 EMP: N
 SURVEYOR REQUIRED? N
 RETURN PACKET TO ENG? N
 JOB BRIEFING REQUIRED? Y
 GFIP #: N/A
 PERMITS: CITY OF MAPLE GROVE

PROJECT DESCRIPTION: SREL
 Troy Ln N
DESIGNER: Kevin Scott
PHONE #: 612-321-5508
DRAWN BY: Kevin Scott
DESIGN DATE: 12/7/2022

REVISION INFO:
 Main
 SSF
SCALE: 1" = 60'
SHEET: 1 OF 1



EXISTING: 2" TR CL-6 (36534843)
 17' ECL TROY LN N
 INSTALL: 2X2 HVPT
 @ 2600'>NNL 101 AVE N
 2" PE 90 ELL
 @ 5' BC TROY LN N
 EXTEND: 2" PE CL-6 SOUTH
 CUT & ABANDON: 2" TR CL-6 SOUTH
 USE: 2" PE CAP
 NOTE: INTENT IS TO TIE IN NORTH OF CITY
 CONSTRUCTION LIMITS. VERIFY WITH
 FIELD STAKING.

EXISTING: 2" TR CL-6 (36534843)
 17' ECL TROY LN N
 INSTALL: 2X2 HVPT
 @ 800'>NNL 101 AVE N
 2" PE 90 ELL
 @ 5' BC TROY LN N
 EXTEND: 2" PE CL-6 NORTH
 CUT & ABANDON: 2" TR CL-6 NORTH
 USE: 2" PE CAP
 NOTE: INTENT IS TO TIE IN SOUTH OF CITY
 CONSTRUCTION LIMITS. VERIFY WITH
 FIELD STAKING.

101 AVE N
 APPROX. 800'
 SOUTH

I hereby certify that this plan, specification, or report was prepared by me or under my direct supervision and that I am a duly Licensed Professional Engineer under the laws of the state of Minnesota.

Signature: *[Signature]*
 Typed or Printed Name: DANIEL G. CHRISTENSEN
 Date: 12/12/2022 License Number: 46588