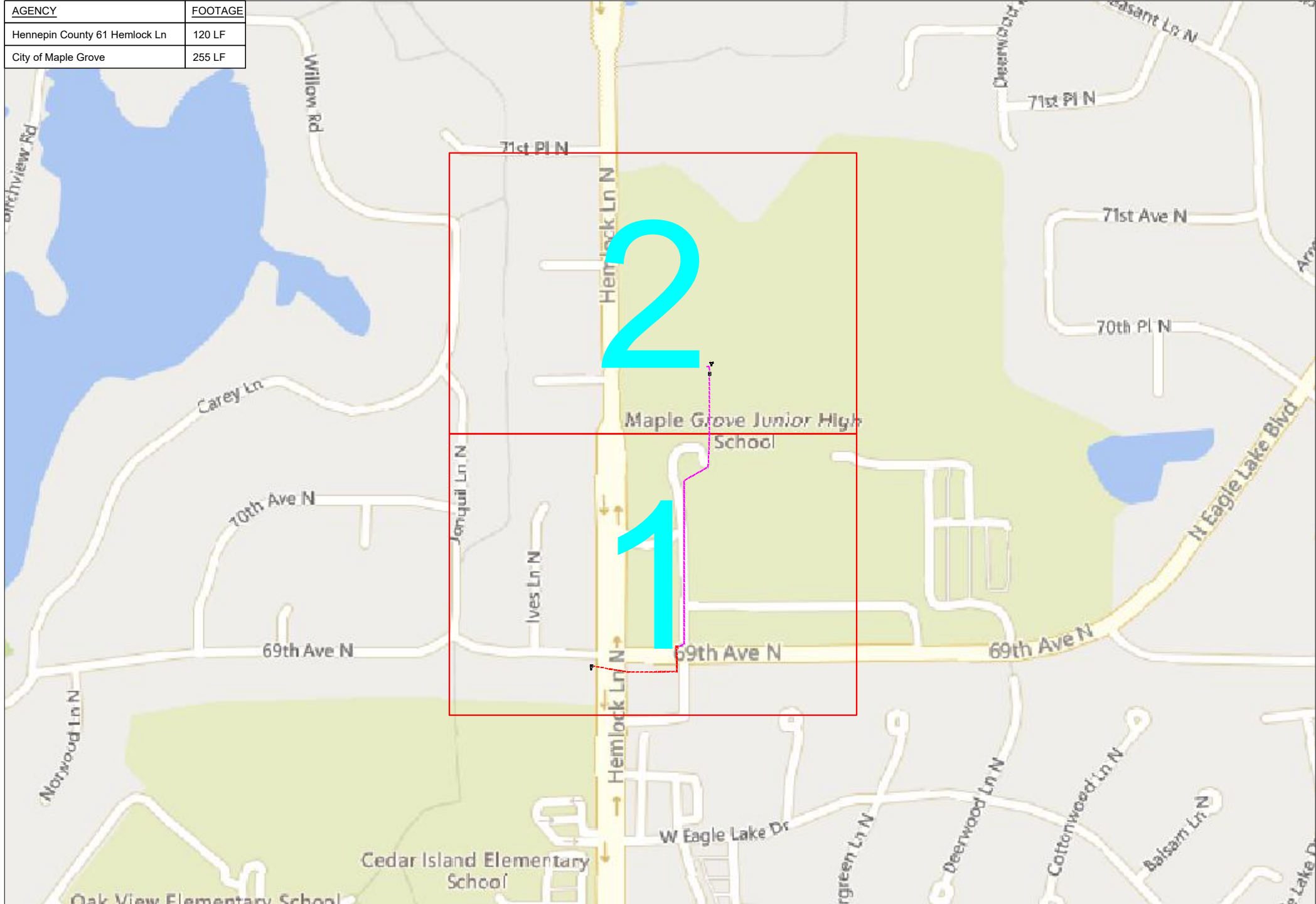


MNMSP00397A - Maple Grove

AGENCY	FOOTAGE
Hennepin County 61 Hemlock Ln	120 LF
City of Maple Grove	255 LF



Hennepin County 61/ Hemlock Ln



1" = -

Route	MNMSP00397A-Maple Grove
City	Maple Grove, MN
County	Hennepin
Filename	MNMSP00397A-Maple Grove
Work Order #	101462

arvig
 160 2nd St SW
 Perham, MN 56573
 (218) 346-5500

TRACKING	
Staked By:	BA 8-2-22
Drafted By:	TJR 8-1-22
Project Manager	Elijah Parker 218-347-3622
As-Built By:	-
Revision	-

Construction Totals	
Route Footage	1397'
Total Underground	1397'
Total Aerial	0'
Underground (New)	374'
Aerial (New)	0'
Overpull (Ex Duct)	1023'
Overlash (Ex Strand)	0'
Plow	0'
Bore	374'
New Vaults	1
New Peds	0

GSOC
 GOPHER STATE ONE CALL
 1-800-252-1116
 www.gopherstateonecall.org

Prepared by:

compass
 consultants inc.
 Perham, MN 218-346-3600
 TrustCompass.com

OVERVIEW

Legend

Fiber Linetypes

	Proposed Underground Fiber - Bore
	Proposed Underground Fiber - Plow
	Proposed UG Fiber in Existing Duct
	Existing Underground Fiber
	Proposed Aerial Fiber
	Proposed Aerial Overlash
	Existing Aerial Fiber
	Proposed Aerial Strand
	Existing Aerial Strand

Other Linetypes

	Rail Road
	Fence
	Retaining Wall
	Storm Sewer
	Sanitary Sewer
	Gas Line
	Tele./Comm. Line
	Water Line
	Electric Line
	Street light/Traffic signal
	District Cooling
	District Heating
	Force Main
	Other Utility or Unknown
	Utility Easement

Abbreviations

- CL - Center Line
- R/W - Right of Way
- BOC - Back of Curb
- FC - Front of Curb
- EOR - Edge of Road
- S/W - Sidewalk
- HH - Handhole
- MH - Manhole
- PRT - Preterminated Cable
- PRG - Pigtail Cable

Symbols

	Proposed Handhole
	Existing Handhole
	Reference Handhole
	Manhole
	Proposed Cabinet
	Existing Cabinet
	Bore Pit
	Proposed Splice Point
	Existing Splice Point
	Power Pole
	Proposed Slack Coil
	Existing Slack Coil
	Proposed Anchor/Down Guy
	Existing Anchor/Down Guy
	Proposed Riser
	Existing Riser
	Aerial Bond
	Aerial Ground
	BM53T - Fiber Marker
	BM53 - Fiber Marker
	Proposed PED
	Existing PED
	Proposed Splice Case
	Existing Splice Case
	Street Light
	Traffic Light
	Traffic Light
	Transformer
	Hydrant
	Catch Basin
	Tree

Materials	
48 Fiber	1647
1.25" Duct	748
Vault (24x30)	1
Ground Rod	1



1" = -

Route	MNMSPO0397A-Maple Grove
City	Maple Grove, MN
County	Hennepin
Filename	MNMSPO0397A-Maple Grove
Work Order #	101462

arvig

160 2nd St SW
Perham, MN 56573
(218) 346-5500

TRACKING

Staked By:	BA	8-2-22
Drafted By:	TJR	8-1-22
Project Manager	Elijah Parker	218-347-3622
As-Built By:	-	-
Revision	-	-

Construction Totals	
Route Footage	1397'
Total Underground	1397'
Total Aerial	0'
Underground (New)	374'
Aerial (New)	0'
Overpull (Ex Duct)	1023'
Overlash (Ex Strand)	0'
Plow	0'
Bore	374'
New Vaults	1
New Peds	0

GSOC
GOPHER STATE ONE CALL
1-800-252-1116
www.gopherstateonecall.org

Prepared by:

compass
consultants inc.
Perham, MN 218-346-3600
TrustCompass.com

LEGEND

Existing Access Points



Windstream



Windstream



1" = -

Route	MNMSPO0397A-Maple Grove
City	Maple Grove, MN
County	Hennepin
Filename	MNMSPO0397A-Maple Grove
Work Order #	101462



160 2nd St SW
Perham, MN 56573
(218) 346-5500

TRACKING

Staked By:	BA	8-2-22
Drafted By:	TJR	8-1-22
Project Manager	Elijah Parker	218-347-3622
As-Built By:	-	-
Revision	-	-

GSOC

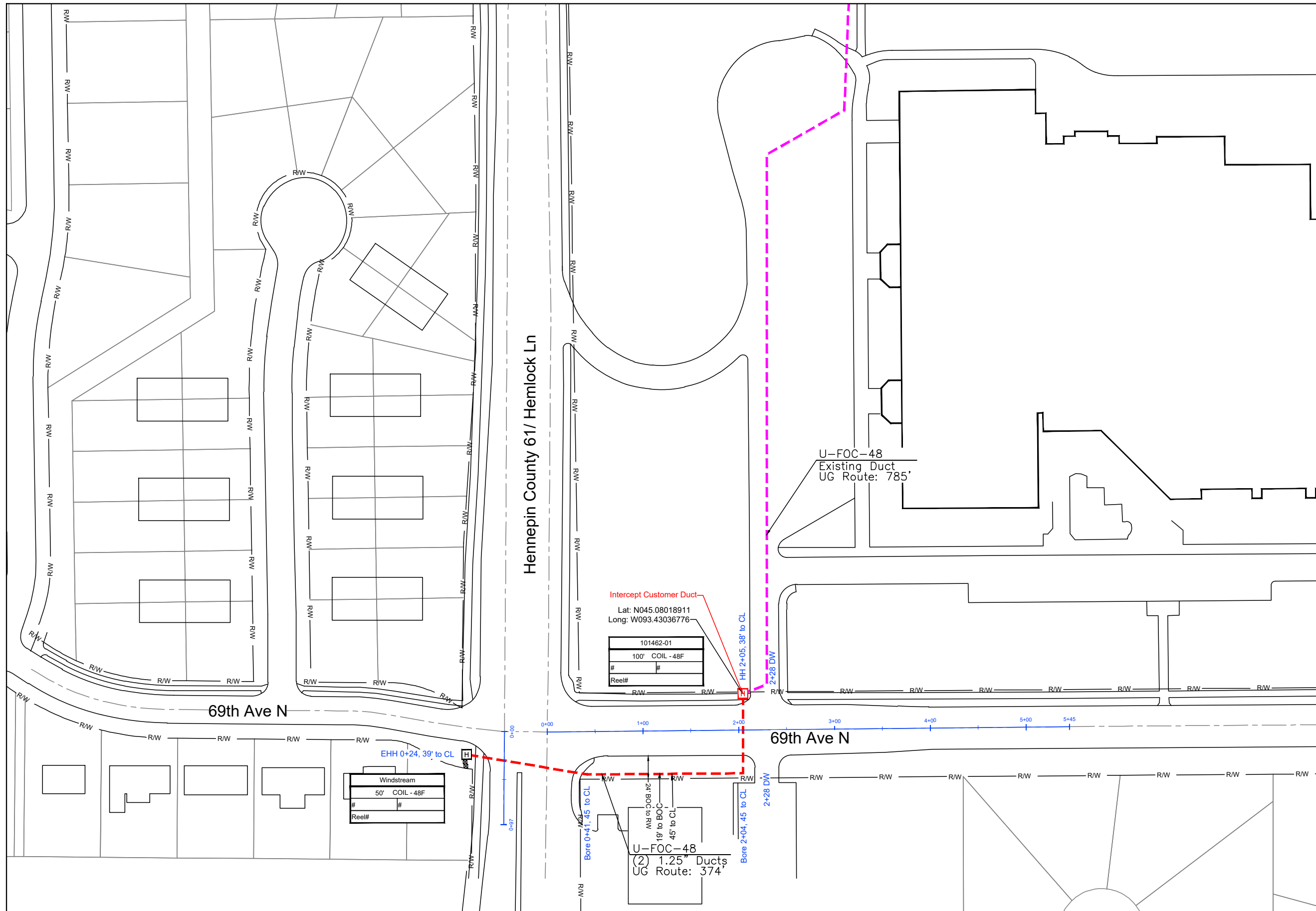
GOPHER STATE ONE CALL
1-800-252-1116
www.gopherstateonecall.org

Prepared by:



EXISTING AP

See Sheet 101462-02



1" = 100'

Route
MNMSPO0397A-Maple Grove
City
Maple Grove, MN
County
Hennepin
Filename
MNMSPO0397A-Maple Grove
Work Order #
101462

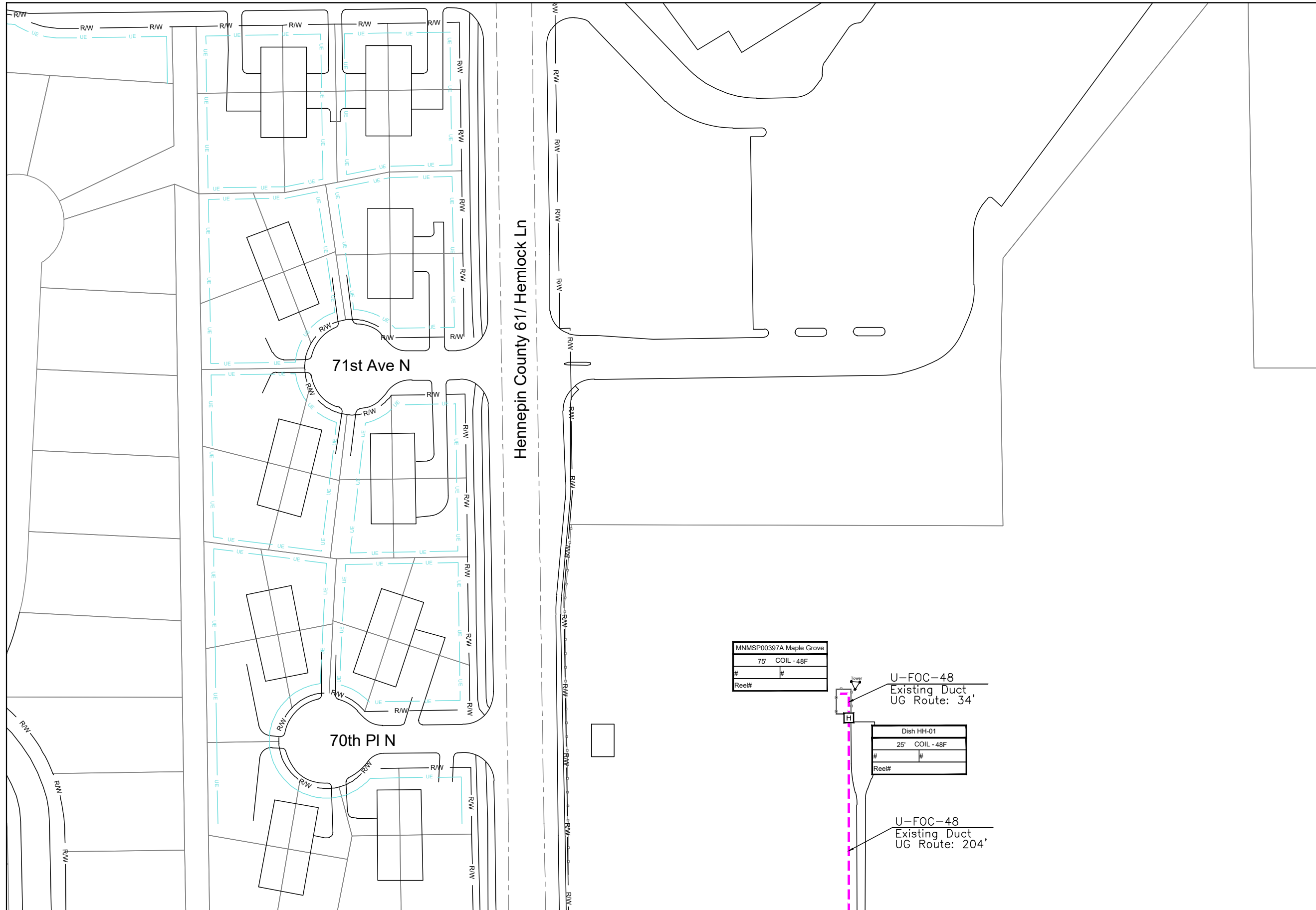
160 2nd St SW
Perham, MN 56573
(218) 346-5500

TRACKING	
Staked By:	
BA	8-2-22
Drafted By:	
TJR	8-1-22
Project Manager	
Elijah Parker	218-347-3622
As-Built By:	-
Revision	-

GSOC
GOPHER STATE ONE CALL
1-800-252-1116
www.gopherstateonecall.org

Prepared by:
 compass consultants inc.
Perham, MN 218-346-3600
TrustCompass.com

101462-01



See Sheet 101462-01



1" = 100'

Route
MNMSPO0397A-Maple Grove
City
Maple Grove, MN
County
Hennepin
Filename
MNMSPO0397A-Maple Grove
Work Order #
101462



160 2nd St SW
Perham, MN 56573
(218) 346-5500

TRACKING

Staked By:
BA 8-2-22
Drafted By:
TJR 8-1-22
Project Manager
Elijah Parker 218-347-3622
As-Built By:
- -
Revision
- - -

GSOC

GOPHER STATE ONE CALL
1-800-252-1116
www.gopherstateonecall.org

Prepared by:



Perham, MN 218-346-3600
TrustCompass.com

101462-02

Date	From Vault	To Vault	Cable/Duct	Reel Number	Start #	End #	Total	Notes:
Vault Size	Vault #	Ground Rod	Vault Size	Vault #	Ground Rod	Vault Size	Vault #	Ground Rod
Vault			Vault			Vault		
Vault			Vault			Vault		
Vault			Vault			Vault		
Vault			Vault			Vault		
Locate Post								
Fiber Marker								
Tracer Wire								



1" =

Route
MNMSPO0397A-Maple Grove

City
Maple Grove, MN

County
Hennepin

Filename
MNMSPO0397A-Maple Grove

Work Order #
101462

160 2nd St SW
Perham, MN 56573
(218) 346-5500

TRACKING	
Staked By:	BA 8-2-22
Drafted By:	TJR 8-1-22
Project Manager:	Elijah Parker 218-347-3622
As-Built By:	- -
Revision:	- - -

GSOC
GOPHER STATE ONE CALL
1-800-252-1116
www.gopherstateonecall.org

Prepared by:

Perham, MN 218-346-3600
TrustCompass.com

Tally Sheet