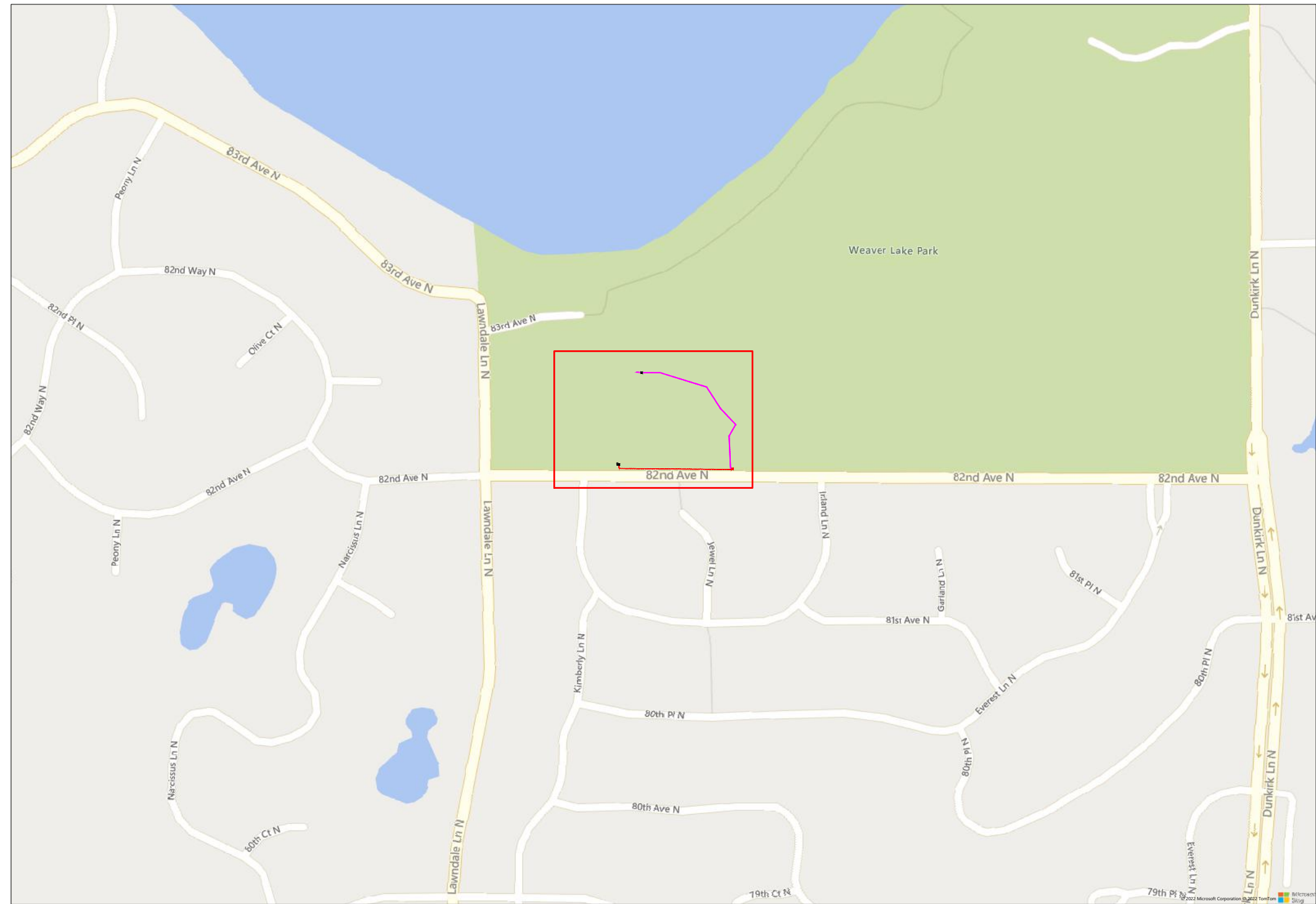


AGENCY	FOOTAGE
City of Maple Grove	410 LF

# 101473 MNMSP00468A - Maple Grove



8401 Dunkirk Lane, Maple Grove, MN



1" = -

Route	MNMSP00468A - Maple Grove
City	Maple Grove, MN
County	Hennepin
Filename	MNMSP00468A - Maple Grove
Work Order #	101473

**arvig**  
 160 2nd St SW  
 Perham, MN 56573  
 (218) 346-5500

TRACKING	
Staked By:	BD 10/7/22
Drafted By:	RCD 10/10/22
Project Manager	Elijah Parker 218-347-3622
As-Built By:	-
Revision	-

Construction Totals	
Route Footage	992'
Total Underground	992'
Total Aerial	0'
Underground (New)	409'
Aerial (New)	0'
Overpull (Ex Duct)	583'
Overlash (Ex Strand)	0'
Plow	0'
Bore	409'
New Vaults	1
New Peds	0

**GSOC**  
 GOPHER STATE ONE CALL  
 1-800-252-1116  
 www.gopherstateonecall.org

Prepared by:  
**compass**  
 consultants inc.  
 Perham, MN 218-346-3600  
 TrustCompass.com

OVERVIEW

# Legend

## Fiber Linetypes

	Proposed Underground Fiber - Bore
	Proposed Underground Fiber - Plow
	Proposed UG Fiber in Existing Duct
	Existing Underground Fiber
	Proposed Aerial Fiber
	Proposed Aerial Overlash
	Existing Aerial Fiber
	Proposed Aerial Strand
	Existing Aerial Strand

## Other Linetypes

	Rail Road
	Fence
	Retaining Wall
	Storm Sewer
	Sanitary Sewer
	Gas Line
	Tele./Comm. Line
	Water Line
	Electric Line
	Street light/Traffic signal
	District Cooling
	District Heating
	Force Main
	Other Utility or Unknown
	Utility Easement

## Abbreviations

- CL - Center Line
- R/W - Right of Way
- BOC - Back of Curb
- FC - Front of Curb
- EOR - Edge of Road
- S/W - Sidewalk
- HH - Handhole
- MH - Manhole
- PRT - Preterminated Cable
- PRG - Pigtail Cable

## Symbols

	Proposed Handhole
	Existing Handhole
	Reference Handhole
	Manhole
	Proposed Cabinet
	Existing Cabinet
	Bore Pit
	Proposed Splice Point
	Existing Splice Point
	Power Pole
	Proposed Slack Coil
	Existing Slack Coil
	Proposed Anchor/Down Guy
	Existing Anchor/Down Guy
	Proposed Riser
	Existing Riser
	Aerial Bond
	Aerial Ground
	BM53T - Fiber Marker
	BM53 - Fiber Marker
	Proposed PED
	Existing PED
	Proposed Splice Case
	Existing Splice Case
	Street Light
	Traffic Light
	Transformer
	Hydrant
	Catch Basin
	Tree

Materials	
48 Fiber	1242
2 X 1.25" Duct	409
Vault (24x30)	1
Ground Rod	1



1" = -

Route	MNMSPP00468A - Maple Grove
City	Maple Grove, MN
County	Hennepin
Filename	MNMSPP00468A - Maple Grove
Work Order #	101473

arvig

160 2nd St SW  
Perham, MN 56573  
(218) 346-5500

TRACKING	
Staked By:	
BD	10/7/22
Drafted By:	
RCD	10/10/22
Project Manager	Elijah Parker 218-347-3622
As-Built By:	-
Revision	-

Construction Totals	
Route Footage	992'
Total Underground	992'
Total Aerial	0'
Underground (New)	409'
Aerial (New)	0'
Overpull (Ex Duct)	583'
Overlash (Ex Strand)	0'
Plow	0'
Bore	409'
New Vaults	1
New Peds	0

**GSOC**  
GOPHER STATE ONE CALL  
1-800-252-1116  
www.gopherstateonecall.org

Prepared by:

compass consultants inc.  
Perham, MN 218-346-3600  
TrustCompass.com

LEGEND

# Existing Access Points



97871-03



97871-03



1" = -

Route  
MNMSPO0468A - Maple Grove  
City  
Maple Grove, MN  
County  
Hennepin  
Filename  
MNMSPO0468A - Maple Grove  
Work Order #  
101473



160 2nd St SW  
Perham, MN 56573  
(218) 346-5500

### TRACKING

Staked By:	
BD	10/7/22
Drafted By:	
RCD	10/10/22
Project Manager	
Elijah Parker	218-347-3622
As-Built By:	-
Revision	-

### GSOC

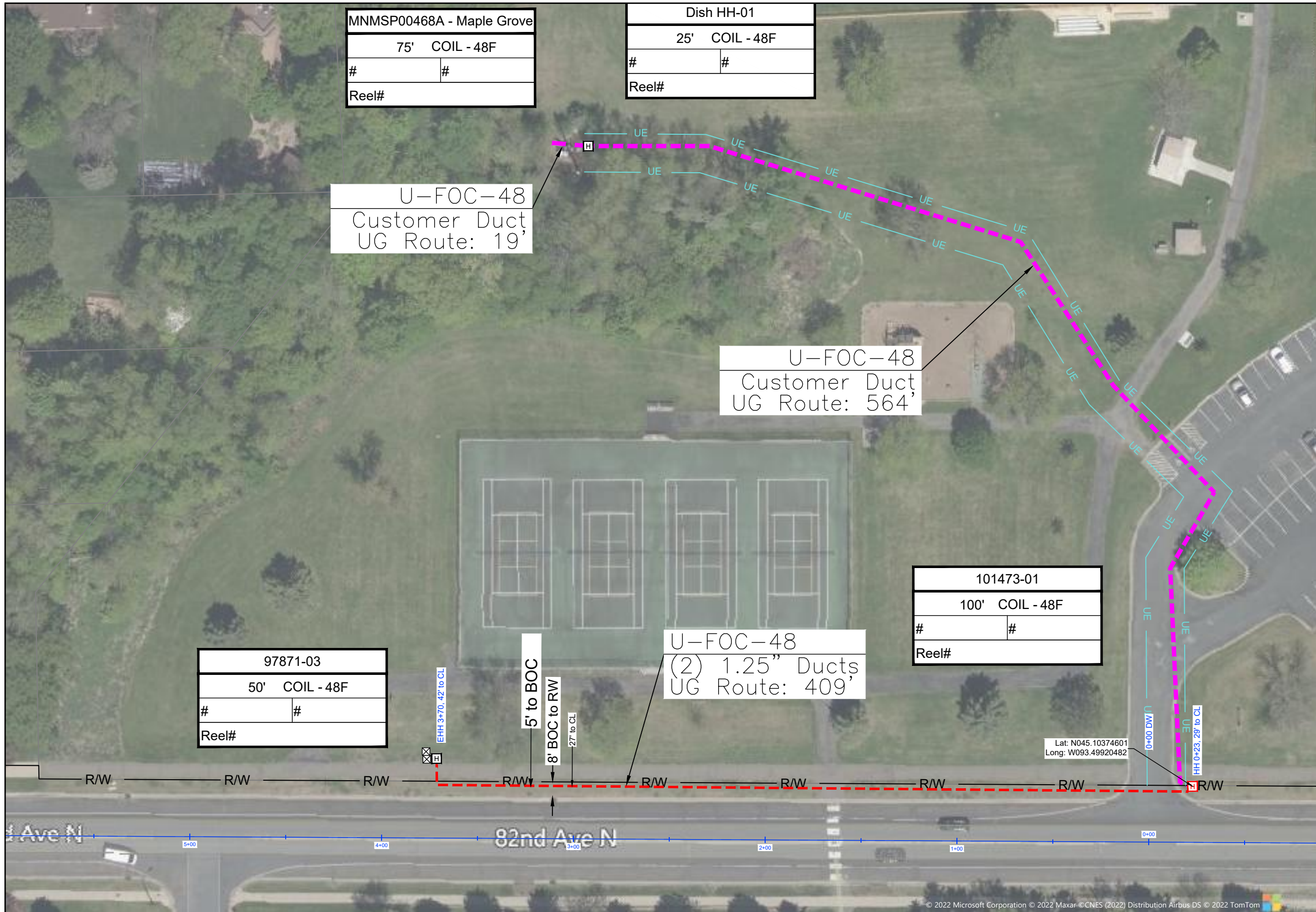
GOPHER STATE ONE CALL  
1-800-252-1116  
www.gopherstateonecall.org

Prepared by:



EXISTING AP





MNMSPO0468A - Maple Grove	
75'	COIL - 48F
#	#
Reel#	

Dish HH-01	
25'	COIL - 48F
#	#
Reel#	

U-FOC-48  
Customer Duct  
UG Route: 19'

U-FOC-48  
Customer Duct  
UG Route: 564'

U-FOC-48  
(2) 1.25" Ducts  
UG Route: 409'

101473-01	
100'	COIL - 48F
#	#
Reel#	

97871-03	
50'	COIL - 48F
#	#
Reel#	

Lat: N045.10374601  
Long: W093.49920482



1" = 50'

Route	MNMSPO0468A - Maple Grove
City	Maple Grove, MN
County	Hennepin
Filename	MNMSPO0468A - Maple Grove
Work Order #	101473

**arvig**

160 2nd St SW  
Perham, MN 56573  
(218) 346-5500

<b>TRACKING</b>	
Staked By:	BD 10/7/22
Drafted By:	RCD 10/10/22
Project Manager	Elijah Parker 218-347-3622
As-Built By:	-
Revision	-

**GSOC**  
GOPHER STATE ONE CALL  
1-800-252-1116  
www.gopherstateonecall.org

Prepared by:

**compass**  
consultants inc.  
Perham, MN 218-346-3600  
TrustCompass.com

101473-01

----

Date	From Vault	To Vault	Cable/Duct	Reel Number	Start #	End #	Total	Notes:
Vault Size	Vault #	Ground Rod	Vault Size	Vault #	Ground Rod	Vault Size	Vault #	Ground Rod
Vault			Vault			Vault		
Vault			Vault			Vault		
Vault			Vault			Vault		
Vault			Vault			Vault		
Locate Post								
Fiber Marker								
Tracer Wire								



1" =

Route  
MNMSPO0468A - Maple Grove  
City  
Maple Grove, MN  
County  
Hennepin  
Filename  
MNMSPO0468A - Maple Grove  
Work Order #  
101473

  
160 2nd St SW  
Perham, MN 56573  
(218) 346-5500

**TRACKING**  
Staked By:  
BD 10/7/22  
Drafted By:  
RCD 10/10/22  
Project Manager  
Elijah Parker 218-347-3622  
As-Built By:  
- -  
Revision  
- - -

**GSOC**  
GOPHER STATE ONE CALL  
1-800-252-1116  
www.gopherstateonecall.org

Prepared by:  
  
Perham, MN 218-346-3600  
TrustCompass.com

Tally Sheet

**FOR CONSTRUCTION USE ONLY**