



PROJECT: 1810BRWH.19\_MPLS

MAPLE GROVE, MN

CLARIFICATION NO.	QUANTITY
C100	
C110	
C120	
C200	
C300	
AER 864	
AER 432	
UG 864	
UG 432	
UG 288	
UG 144	
UG 96	
UG 72	
UG 48	
OVERPULL	
2" HDPE = C100	
HH (24"x36"x24")	
HH (30"x60"x30")	
WARNING SIGN	
ANCHOR/GUY	
AER SLACK LOOP	
SPLICE CLOSURE	
(1) FUSION SPLICE	
(12) RIBBON SPLICE	
FDH	
MST	
MST LENGTH	

SEE SHEET 2

MCImetro  
ACCESS TRANSMISSION SERVICES, LLC

**MCI**

OUTSIDE PLANT CONSTRUCTION

TITLE: FIBER OPTIC CABLE ROUTE  
1810BRWH.19\_MPLS

DATE: 9/21/2022

ENGINEER: KLJ

DRAWN BY: K. ZAVORAL

REVISIONS		
DATE	DESCRIPTION	INITIAL

EXCEPT AS MAY BE OTHERWISE PROVIDED BY CONTRACT, THESE DRAWINGS AND SPECIFICATIONS SHALL REMAIN THE PROPERTY OF MCI COMMUNICATIONS SERVICES, INC., BOTH BEING ISSUED IN STRICT CONFIDENCE AND SHALL NOT BE REPRODUCED, COPIED, OR USED FOR ANY PURPOSE WITHOUT SPECIFIC WRITTEN PERMISSION.

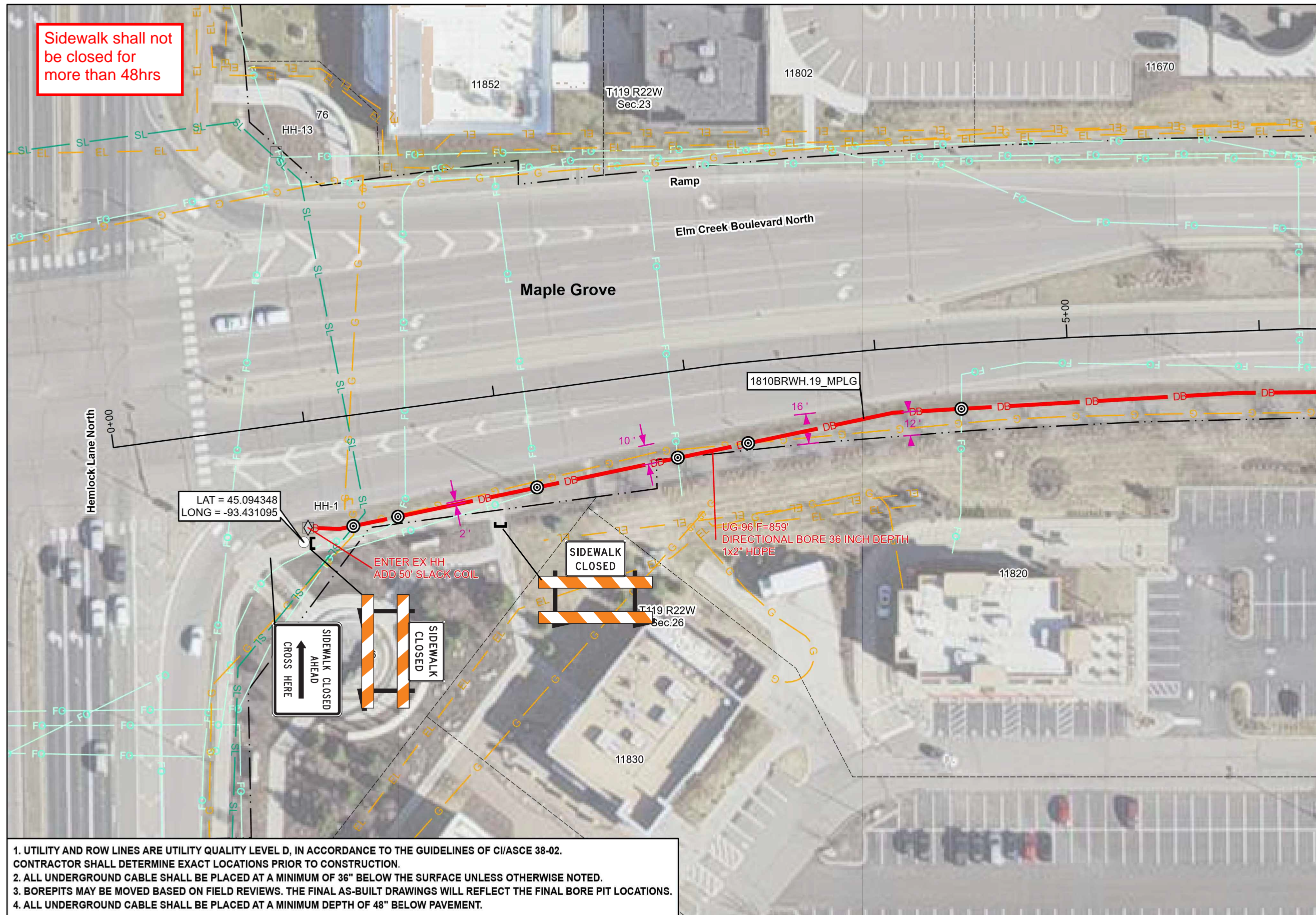
SCALE

HORIZONTAL: 1" = 50'

VERTICAL: 1" = 50'

MP \_\_\_\_ TO MP \_\_\_\_

SHEET 1 OF 2



- UTILITY AND ROW LINES ARE UTILITY QUALITY LEVEL D, IN ACCORDANCE TO THE GUIDELINES OF C/ASCE 38-02. CONTRACTOR SHALL DETERMINE EXACT LOCATIONS PRIOR TO CONSTRUCTION.
- ALL UNDERGROUND CABLE SHALL BE PLACED AT A MINIMUM OF 36" BELOW THE SURFACE UNLESS OTHERWISE NOTED.
- BOREPITS MAY BE MOVED BASED ON FIELD REVIEWS. THE FINAL AS-BUILT DRAWINGS WILL REFLECT THE FINAL BORE PIT LOCATIONS.
- ALL UNDERGROUND CABLE SHALL BE PLACED AT A MINIMUM DEPTH OF 48" BELOW PAVEMENT.





PROJECT: 1810BRWH.19\_MPLS

MAPLE GROVE, MN

CLARIFICATION NO.	QUANTITY
C100	859
C110	
C120	
C200	
C300	
AER 864	
AER 432	
UG 864	
UG 432	
UG 288	
UG 144	
UG 96	959
UG 72	
UG 48	
OVERPULL	312
2" HDPE = C100	859
HH (24"x36"x24")	
HH (30"x60"x30")	1
WARNING SIGN	
ANCHOR/GUY	
AER SLACK LOOP	
SPLICE CLOSURE	1
(1) FUSION SPLICE	
(12) RIBBON SPLICE	
FDH	
MST	1
MST LENGTH	500

MCImetro  
ACCESS TRANSMISSION SERVICES, LLC

**MCI**

OUTSIDE PLANT CONSTRUCTION

TITLE: FIBER OPTIC CABLE ROUTE  
1810BRWH.19\_MPLS

DATE: 9/21/2022

ENGINEER: KLJ

DRAWN BY: K. ZAVORAL

REVISIONS		
DATE	DESCRIPTION	INITIAL

EXCEPT AS MAY BE OTHERWISE PROVIDED BY CONTRACT, THESE DRAWINGS AND SPECIFICATIONS SHALL REMAIN THE PROPERTY OF MCI COMMUNICATIONS SERVICES, INC., BOTH BEING ISSUED IN STRICT CONFIDENCE AND SHALL NOT BE REPRODUCED, COPIED, OR USED FOR ANY PURPOSE WITHOUT SPECIFIC WRITTEN PERMISSION.

SCALE

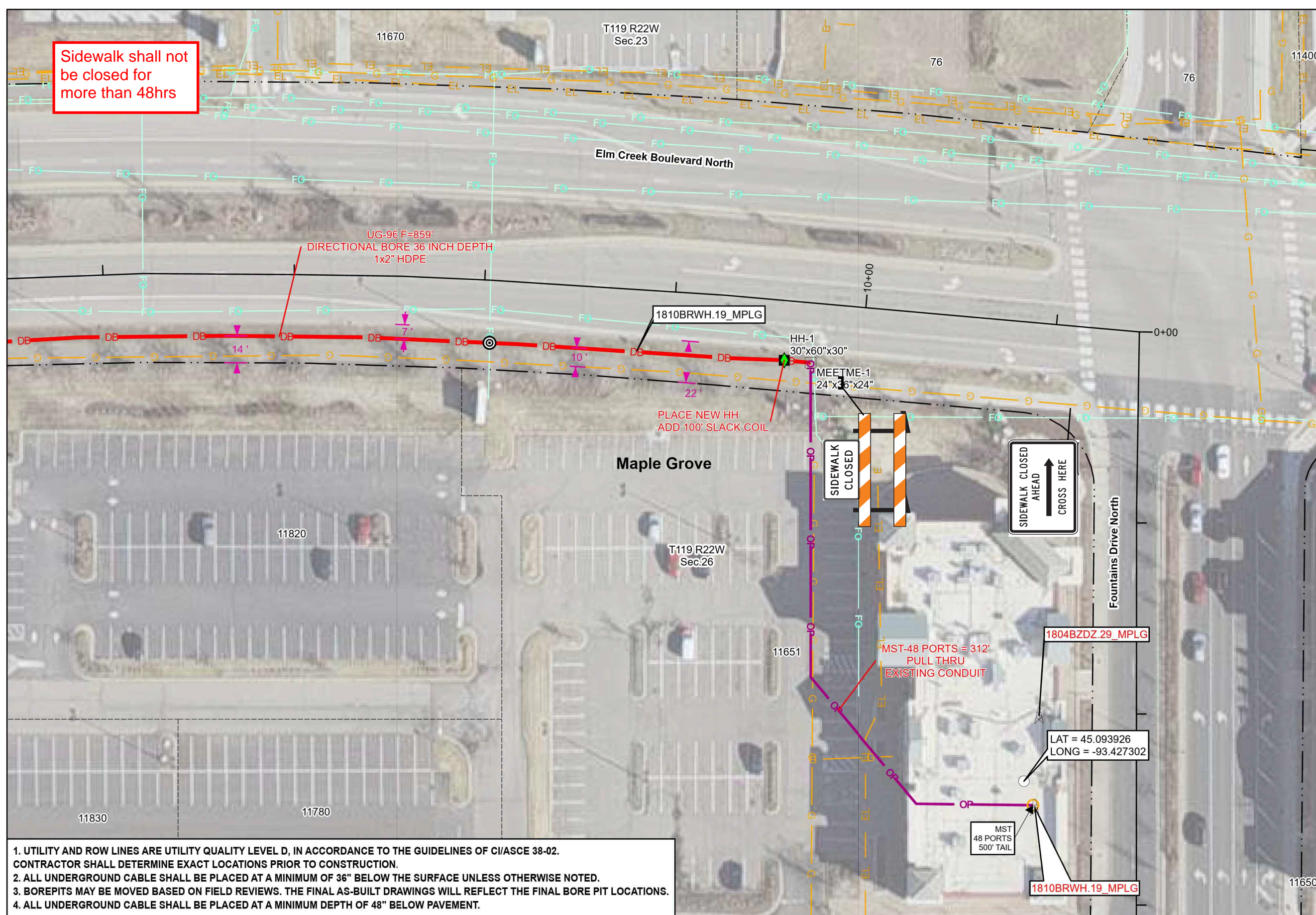
HORIZONTAL: 1" = 50'

VERTICAL: 1" = 50'

MP \_\_\_\_ TO MP \_\_\_\_

SHEET 2 OF 2

SEE SHEET 1



- UTILITY AND ROW LINES ARE UTILITY QUALITY LEVEL D, IN ACCORDANCE TO THE GUIDELINES OF C/ASCE 38-02. CONTRACTOR SHALL DETERMINE EXACT LOCATIONS PRIOR TO CONSTRUCTION.
- ALL UNDERGROUND CABLE SHALL BE PLACED AT A MINIMUM OF 36" BELOW THE SURFACE UNLESS OTHERWISE NOTED.
- BOREPITS MAY BE MOVED BASED ON FIELD REVIEWS. THE FINAL AS-BUILT DRAWINGS WILL REFLECT THE FINAL BORE PIT LOCATIONS.
- ALL UNDERGROUND CABLE SHALL BE PLACED AT A MINIMUM DEPTH OF 48" BELOW PAVEMENT.