

SUMMERWELL TOWNHOMES

Maple Grove, Minnesota

GREYSTAR DEVELOPMENT CENTRAL, LLC

3800 American Blvd W
Suite 950
Bloomington, Minnesota 55431

LOUCKS

PLANNING
CIVIL ENGINEERING
LAND SURVEYING
LANDSCAPE ARCHITECTURE
ENVIRONMENTAL

7200 Hemlock Lane, Suite 300
Maple Grove, MN 55369
763.424.5505
www.loucksinc.com

esg
ARCHITECTURE & DESIGN

500 Washington Avenue South, Suite 1080
Minneapolis, MN 55415
p 612.239.5508 | f 612.239.5382
www.esgarch.com

CADD QUALIFICATION

CADD files prepared by the Consultant for this project are instruments of the Consultant's professional services for use solely with respect to this project. These CADD files shall not be used on other projects, for additions to this project, or for completion of this project by others without written approval by the Consultant. With the Consultant's approval, others may be permitted to obtain copies of the CADD drawing files for information and reference only. All intentional or unintentional revisions, additions, or deletions to these CADD files shall be made at the full risk of that party making such revisions, additions or deletions and that party shall hold harmless and indemnify the Consultant from any & all responsibilities, claims, and liabilities.

SUBMITTAL/REVISIONS

12/27/21	DEVELOPMENT STAGE PUD
01/11/22	SCHEMATIC DESIGN
02/18/22	CITY COMMENTS
03/09/22	MCS COMMENTS
04/01/22	DESIGN DEVELOPMENT
04/13/22	CITY COMMENTS
04/28/22	XCEL ENERGY COMMENTS
05/23/22	WATERSHED COMMENTS
05/23/22	PERMIT SET
05/25/22	WATERSHED COMMENTS
07/18/22	CITY COMMENTS
07/27/22	CITY COMMENTS
08/22/22	HYDRANT ADDITION
08/26/22	ASI #1

PROFESSIONAL SIGNATURE

I hereby certify that this plan, specification or report was prepared by me or under my direct supervision and that I am a duly Licensed Professional Engineer under the laws of the State of Minnesota.

Nicki J. Farrell
Nicki J. Farrell, P.E.
License No. 41352
Date

QUALITY CONTROL

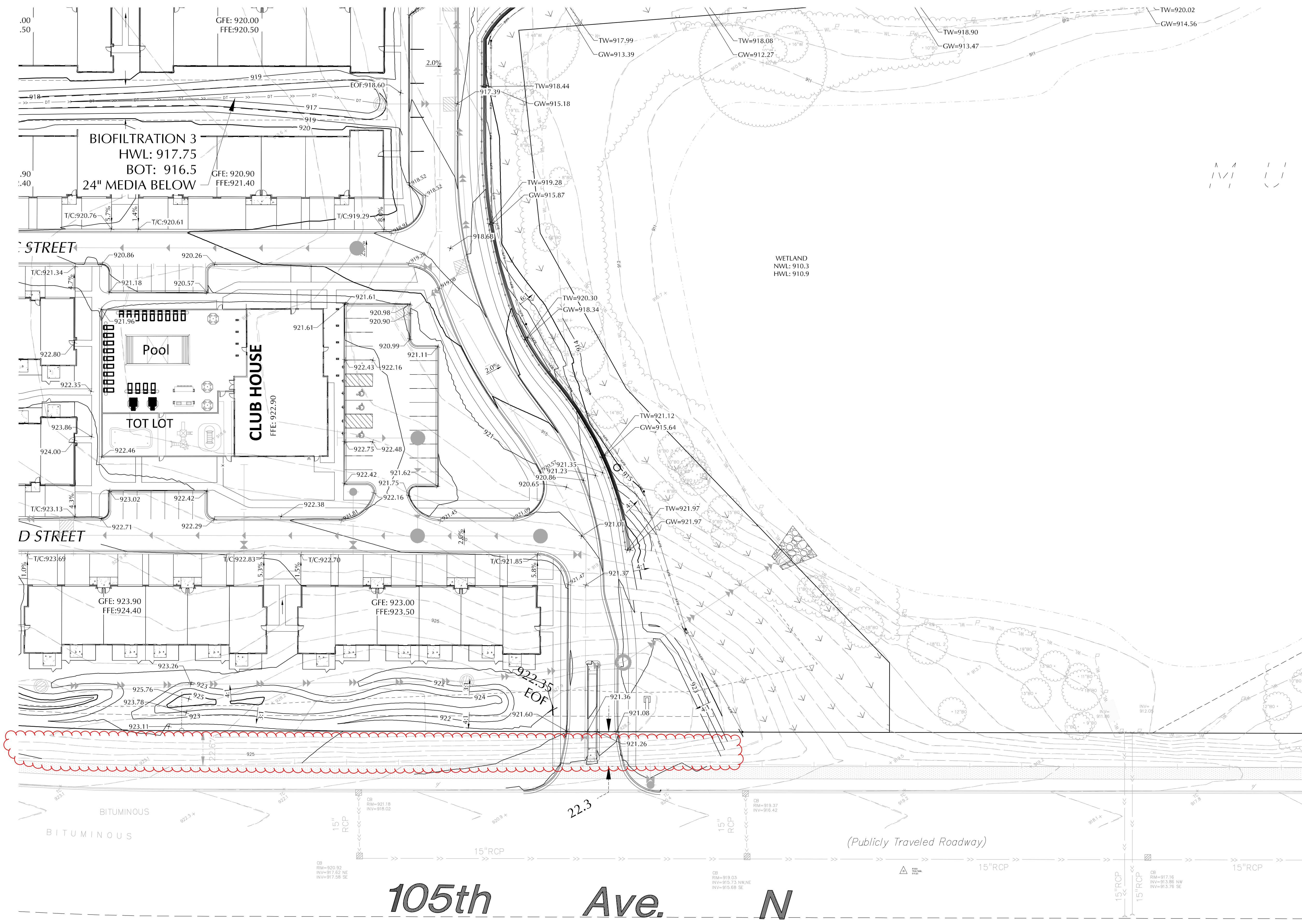
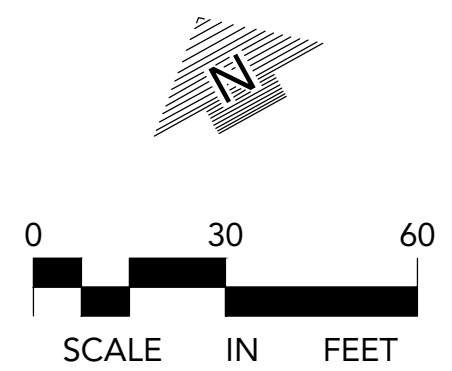
Loecks Project No.	14193.0G
Project Lead	VJV
Drawn By	CDL
Checked By	VJV
Review Date	12/23/21

SHEET INDEX

C1-1	EXISTING CONDITIONS
C1-2	PRELIMINARY PLAT
C2-1	SITE PLAN
C3-1	GRADING PLAN
C3-2	SWPPP PLAN
C3-3	SWPPP NOTES & DETAILS
C4-1	UTILITY PLAN
C4-2 to C4-9	SSWR & WATR P&P
C5-1	STORM SEWER PLAN
C5-2 to C5-9	STREET & STRM P&P
C8-1 to C8-3	CIVIL DETAILS
L1-1 to L1-2	LANDSCAPE PLAN
L2-1	LANDSCAPE DETAILS

C3-9 GRADING PLAN - SE

C3-9



PROJECT BENCHMARK

SITE BENCHMARK: TOP NUT OF HYDRANT LOCATED AT THE NORTHEAST CORNER OF 105TH AVENUE N. AND NIAGARA LANE. ELEVATION = 917.53 (NGVD 29)

Plotted: 09/01/2022 5:29 PM W:\2014\14193\CADD DATA\CIVIL.dwg Sheet: Files\C3-1 GRADING PLAN