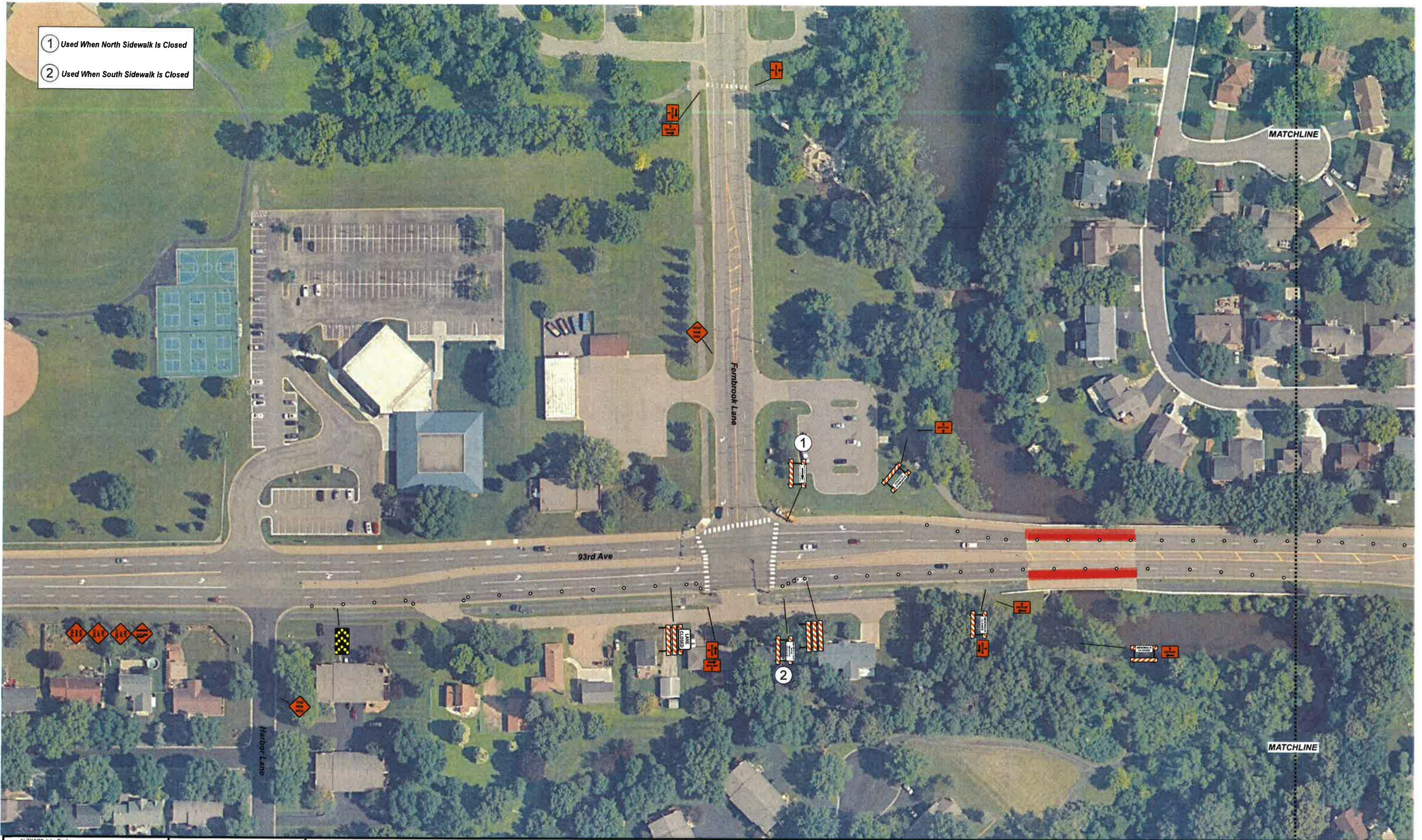


- ① Used When North Sidewalk Is Closed
- ② Used When South Sidewalk Is Closed



1) 7/13/22 Jake Sirek				
NO	DATE	DWN	CKD	REVISIONS



Disclaimer- This is a proposed traffic device layout. It has not been approved by a Professional Engineer and must be approved and accepted by the Road Authority. Safety Signs LLC does not assume any legal liability.

**TRAFFIC PLAN**  
 EB and WB 93rd Ave Right Lane Closures- Maple Grove

