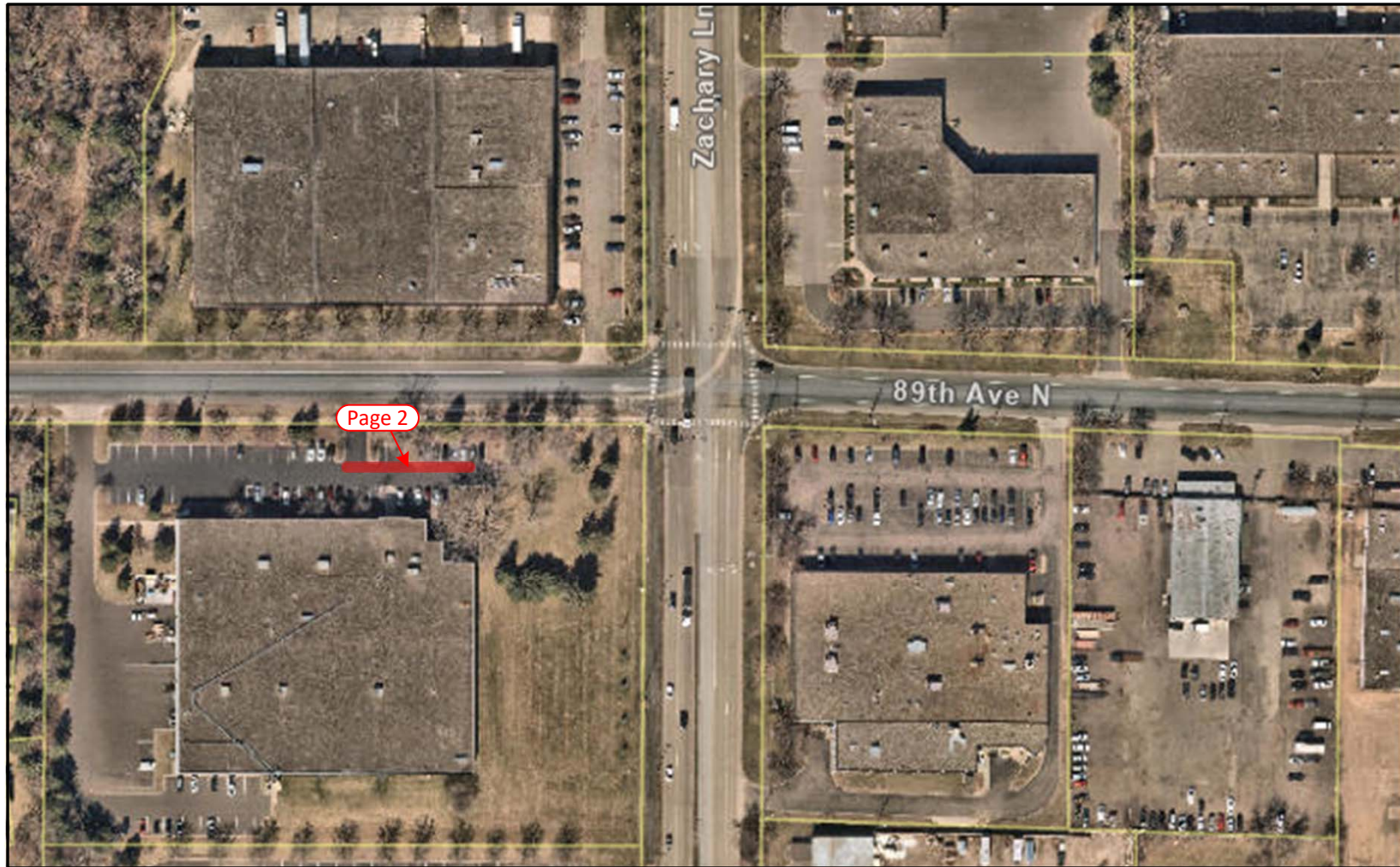


Arvig Traffic Plan - 101353 Timesavers LLC



Page 2

Prepared By:



Rob Davis
TCS ID#4661
218.347.3618
Robert.davis@trustcompass.com

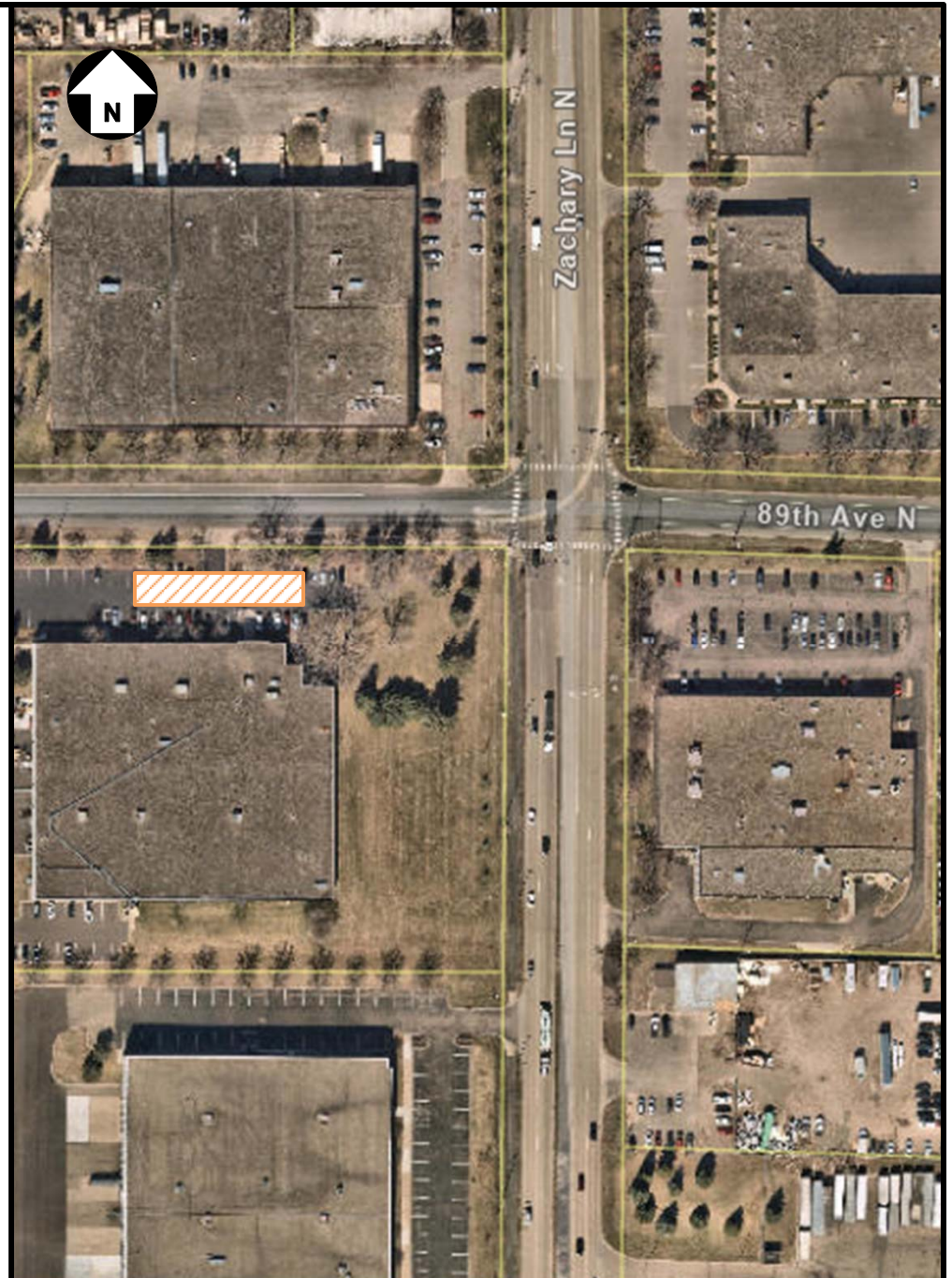
DISCLAIMER: This traffic control plan has been prepared in accordance with the Minnesota Temporary Traffic Control Field Manual. While care has been taken in the preparation of this traffic control plan, traffic and site conditions at the time of the works may vary from those established in the development of the traffic control plan. Implementation of this plan and setup of traffic signage is at the responsibility of Arvig Enterprises and their contractor. Where conditions vary from those documented, additional input from a Traffic Control professional should be sought.

Overview

Rev 0 8/16/2022

Page 1

Park On Customer Property



89th Ave N