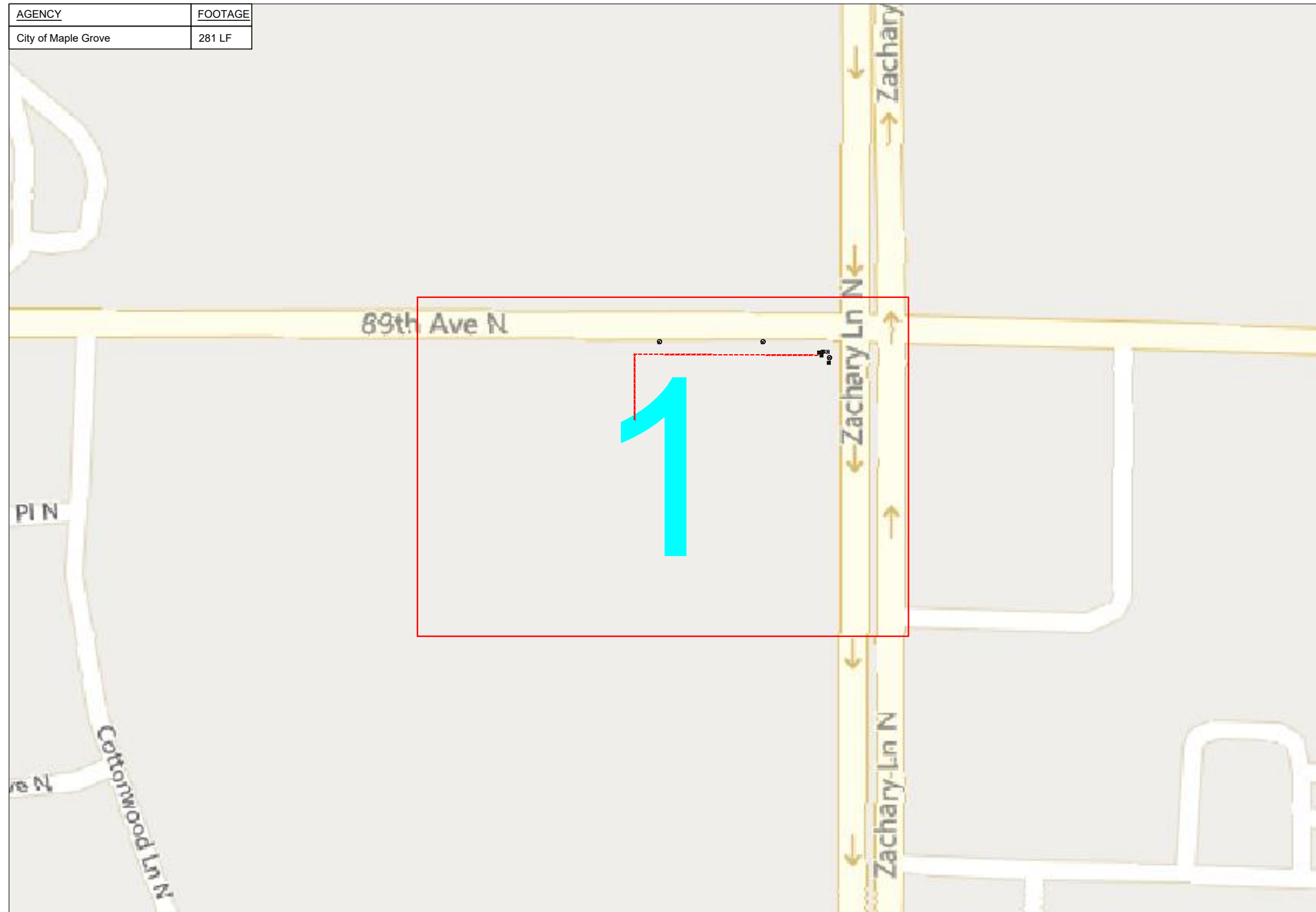


101353 Timesavers LLC

AGENCY	FOOTAGE
City of Maple Grove	281 LF



11123 89th Ave N



1" = -

Route	-
City	Maple Grove, MN
County	Hennepin
Filename	Timesavers LLC
Work Order #	101353



160 2nd St SW
Perham, MN 56573
(218) 346-5500

TRACKING

Staked By:	EW	8-5-22
Drafted By:	TJR	8-5-22
Project Manager	Matt Gunnarson	763-270-6177
As-Built By:	-	-
Revision	-	-

Construction Totals	
Route Footage	364'
Total Underground	364'
Total Aerial	0'
Underground (New)	364'
Aerial (New)	0'
Overpull (Ex Duct)	0'
Overlash (Ex Strand)	0'
Plow	0'
Bore	364'
New Vaults	0
New Peds	0

GSOC

GOPHER STATE ONE CALL
1-800-252-1116
www.gopherstateonecall.org

Prepared by:



compass
consultants inc.
Perham, MN 218-346-3600
TrustCompass.com

OVERVIEW

Legend

Materials	
48 Fiber	514
1.25" Duct	364

Fiber Linetypes

	Proposed Underground Fiber - Bore
	Proposed Underground Fiber - Plow
	Proposed UG Fiber in Existing Duct
	Existing Underground Fiber
	Proposed Aerial Fiber
	Proposed Aerial Overlash
	Existing Aerial Fiber
	Proposed Aerial Strand
	Existing Aerial Strand

Other Linetypes

	Rail Road
	Fence
	Retaining Wall
	Storm Sewer
	Sanitary Sewer
	Gas Line
	Tele./Comm. Line
	Water Line
	Electric Line
	Street light/Traffic signal
	District Cooling
	District Heating
	Force Main
	Other Utility or Unknown
	Utility Easement

Abbreviations

- CL - Center Line
- R/W - Right of Way
- BOC - Back of Curb
- FC - Front of Curb
- EOR - Edge of Road
- S/W - Sidewalk
- HH - Handhole
- MH - Manhole
- PRT - Preterminated Cable
- PRG - Pigtail Cable

Symbols

	Proposed Handhole
	Existing Handhole
	Reference Handhole
	Manhole
	Proposed Cabinet
	Existing Cabinet
	Bore Pit
	Proposed Splice Point
	Existing Splice Point
	Power Pole
	Proposed Slack Coil
	Existing Slack Coil
	Proposed Anchor/Down Guy
	Existing Anchor/Down Guy
	Proposed Riser
	Existing Riser
	Aerial Bond
	Aerial Ground
	BM53T - Fiber Marker
	BM53 - Fiber Marker
	Proposed PED
	Existing PED
	Proposed Splice Case
	Existing Splice Case
	Street Light
	Traffic Light
	Traffic Light
	Transformer
	Hydrant
	Catch Basin
	Tree



1" = -

Route	-
City	Maple Grove, MN
County	Hennepin
Filename	Timesavers LLC
Work Order #	101353



160 2nd St SW
Perham, MN 56573
(218) 346-5500

TRACKING

Staked By:	EW	8-5-22
Drafted By:	TJR	8-5-22
Project Manager	Matt Gunnarson	763-270-6177
As-Built By:	-	-
Revision	-	-

Construction Totals	
Route Footage	364'
Total Underground	364'
Total Aerial	0'
Underground (New)	364'
Aerial (New)	0'
Overpull (Ex Duct)	0'
Overlash (Ex Strand)	0'
Plow	0'
Bore	364'
New Vaults	0
New Peds	0

GSOC

GOPHER STATE ONE CALL
1-800-252-1116
www.gopherstateonecall.org



Perham, MN 218-346-3600
TrustCompass.com

LEGEND

Existing Access Points



Windstream



Windstream



1" = -

Route	-
City	Maple Grove, MN
County	Hennepin
Filename	Timesavers LLC
Work Order #	101353



160 2nd St SW
Perham, MN 56573
(218) 346-5500

TRACKING

Staked By:	EW	8-5-22
Drafted By:	TJR	8-5-22
Project Manager	Matt Gunnarson	763-270-6177
As-Built By:	-	-
Revision	-	-

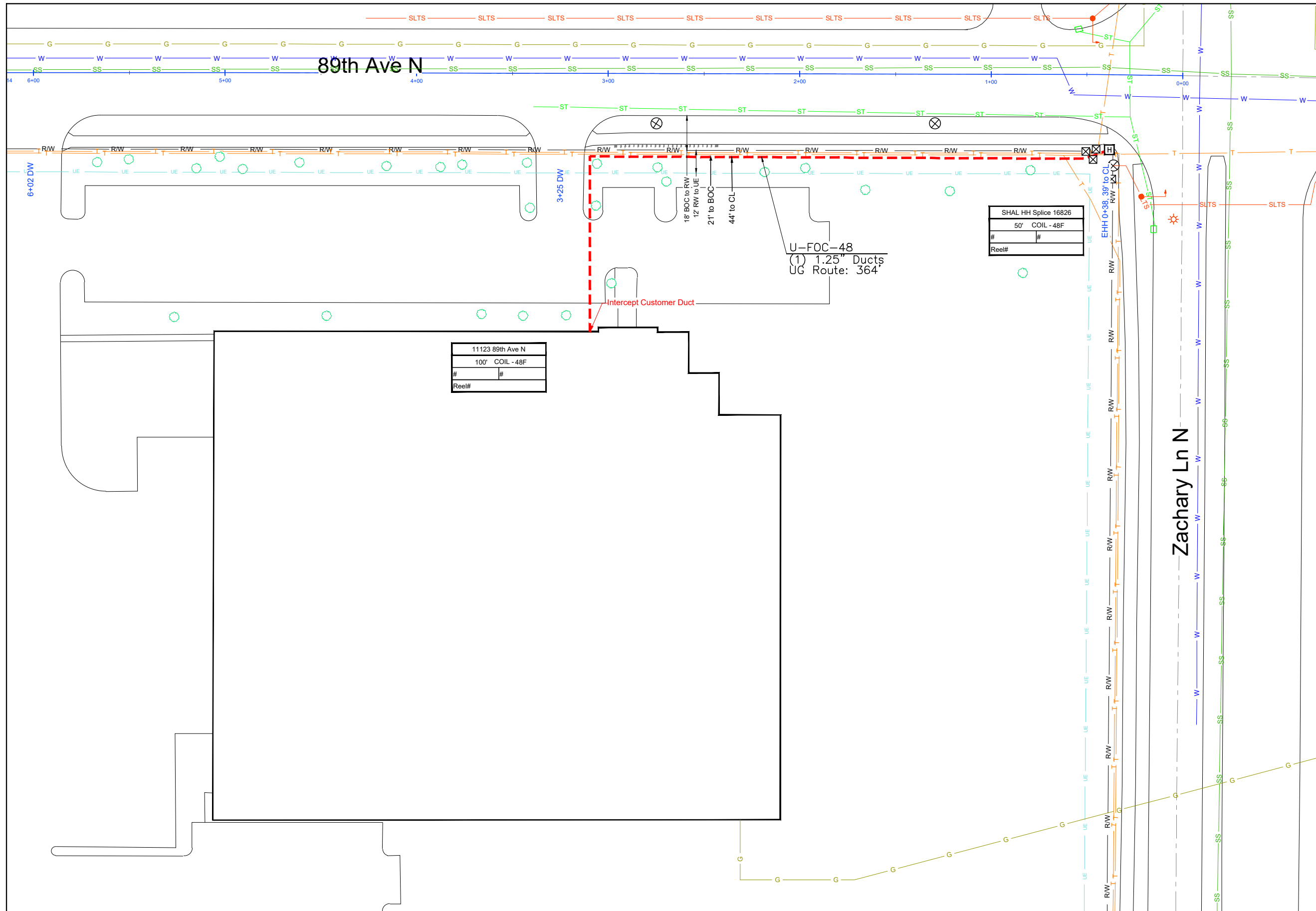
GSOC

GOPHER STATE ONE CALL
1-800-252-1116
www.gopherstateonecall.org



Prepared by:
Perham, MN 218-346-3600
TrustCompass.com

EXISTING AP



Route
 -
 City
 Maple Grove, MN
 County
 Hennepin
 Filename
 Timesavers LLC
 Work Order #
 101353

arvig
 160 2nd St SW
 Perham, MN 56573
 (218) 346-5500

TRACKING

Staked By:	EW	8-5-22
Drafted By:	TJR	8-5-22
Project Manager	Matt Gunnarson	763-270-6177
As-Built By:	-	-
Revision	-	-

GSOC
 GOPHER STATE ONE CALL
 1-800-252-1116
 www.gopherstateonecall.org

Prepared by:
 **compass**
 consultants inc.
 Perham, MN 218-346-3600
 TrustCompass.com

101353-01

11123 89th Ave N	
100'	COIL - 48F
#	#
Reel#	

SHAL HH Splice 16826	
50'	COIL - 48F
#	#
Reel#	

U-FOC-48
 (1) 1.25" Ducts
 UG Route: 364'

Intercept Customer Duct

