

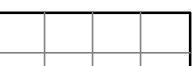
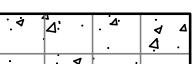


DATA RECOGNITION CORPORATION  
 MAPLE GROVE HEADQUARTERS  
 13490 BASS LAKE ROAD  
 MAPLE GROVE, MN 55311

**SYMBOL LEGEND**

-  RECLAIM EXISTING PAVEMENT TO AVERAGE DEPTH OF 8".  
REPAVE WITH NEW LIGHT-DUTY BITUMINOUS PAVEMENT  
SEE DETAIL 1/C300
-  RECLAIM EXISTING PAVEMENT TO AVERAGE DEPTH OF 8".  
REPAVE WITH NEW HEAVY-DUTY BITUMINOUS PAVEMENT  
SEE DETAIL 2/C300
-  REMOVE AND REPLACE NEW  
LIGHT-DUTY CONCRETE PAVEMENT  
SEE DETAIL 3/C300
-  REMOVE AND REPLACE NEW  
HEAVY-DUTY CONCRETE PAVEMENT  
SEE DETAIL 4/C300

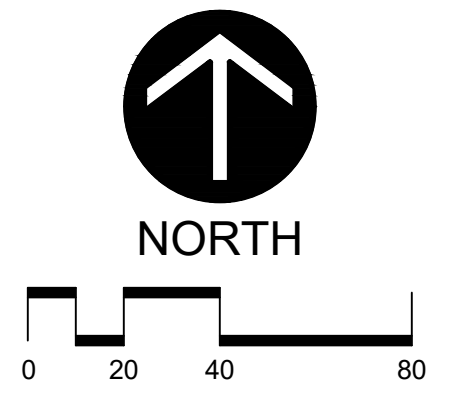
**KEY NOTES**

- 1 NEW B618 CONCRETE CURB AND GUTTER, SEE DETAIL 5/C300
- 2 NEW SIGN AND BOLLARD, SEE DETAIL 8C/300  
 \_A\_ ADA PARKING  
 \_B\_ ADA ACCESS AISLE
- 3 REMOVE AND REPLACE ADA PARKING SIGN PLATE
- 4 DEMO EXISTING SIGN
- 5 STORM STRUCTURE ADJUSTMENT AS NEEDED,  
SEE DETAIL 7/C300
- 6 NEW SIDEWALK RAMP, SEE DETAIL 6/C300
- 7 NEW INDUSTRIAL/COMMERCIAL DRIVEWAY APRON,  
SEE DETAIL 2/C301
- 8 ADJUST GATE VALVE AS NEEDED
- 9 REMOVE AND DISPOSE OF EXISTING CONCRETE PAVEMENT
- 10 PROTECT EXISTING MOTORCYCLE PARKING SIGN

**GENERAL PLAN NOTES**

1. Verify all existing utility locations.
2. It is the responsibility of the Contractor to perform or coordinate all necessary utility demotions and relocations from existing utility locations to all onsite amenities and buildings. These connections include, but are not limited to, water, sanitary sewer, cable tv, telephone, gas, electric, site lighting, etc.
3. Prior to beginning work, contact Gopher State Onecall (651-454-0002) to locate utilities throughout the area under construction. The Contractor shall retain the services of a private utility locator to locate the private utilities.
4. Sawcut along edges of pavements, sidewalks, and curbs to remain.
5. All construction shall be performed in accordance with state and local standard specifications for construction.
6. All ADA parking, access aisle, fire lane, and visitor parking signs are to be removed and replaced.

Parking Stalls			
Lot Name	# of Stalls	# of ADA Stalls Required	# of ADA Stalls Provided
North Lot	45	2	2
West Lot	235	7	7
South Lot	86	4	4



**Larson Engineering, Inc.**  
 3524 Labore Road  
 White Bear Lake, MN 55110  
 651.481.9120 (f) 651.481.9201  
 www.larsonengr.com

© 2022 Larson Engineering, Inc. All rights reserved.

Client:  
**DATA RECOGNITION CORPORATION**  
 13490 BASS LAKE ROAD  
 MAPLE GROVE, MN 55311

Project Title:  
**2022 PAVEMENT REHABILITATION**  
 13490 BASS LAKE ROAD  
 MAPLE GROVE, MN 55311

I hereby certify that this plan, specifications or report was prepared by me or under my direct supervision and that I am a duly licensed Professional Engineer under the laws of the state of Minnesota.

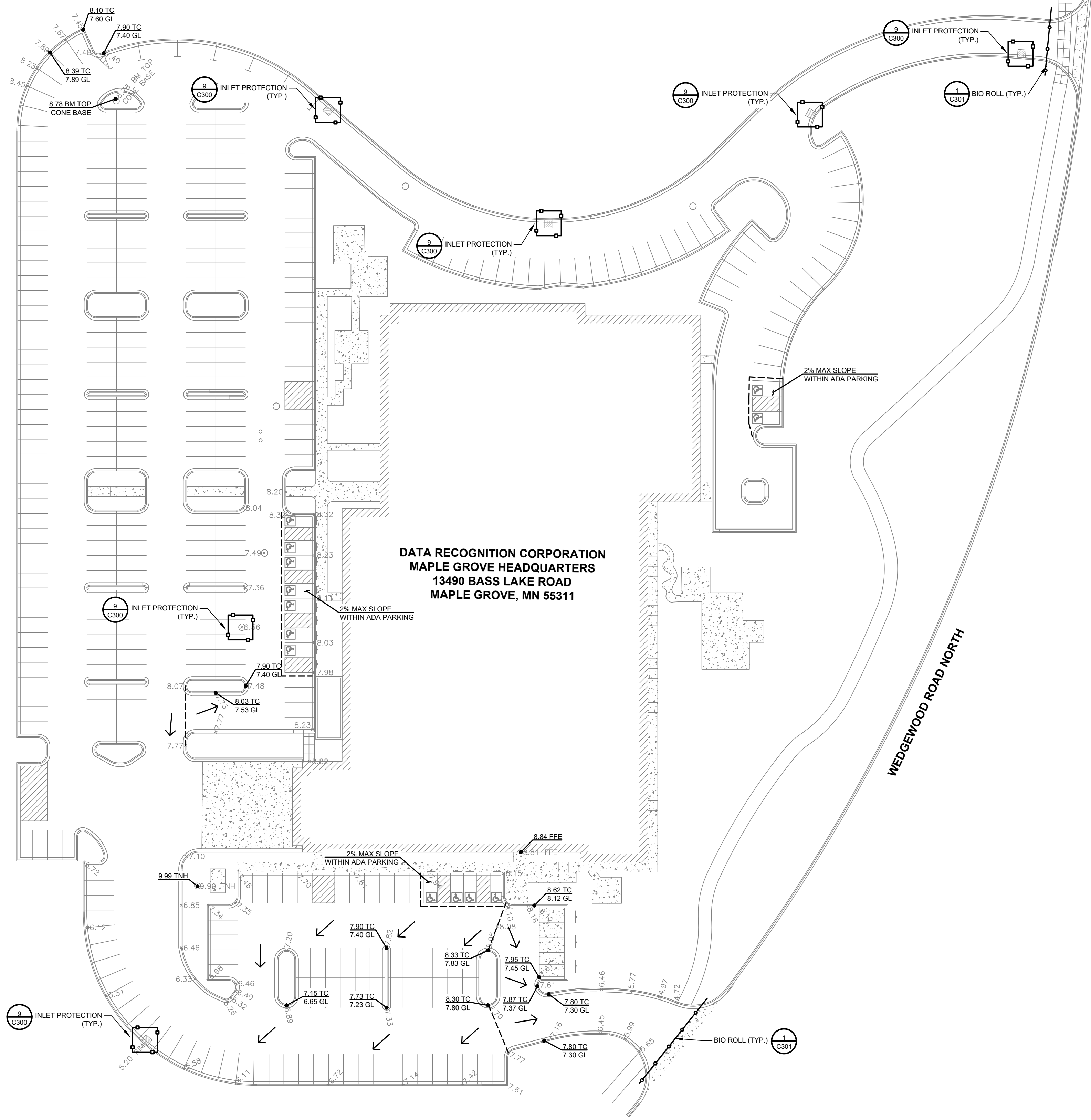
*Matt Woodruff*  
 Matt Woodruff, P.E.  
 Date: 04.08.22 Reg. No.: 41885

Rev.	Date	Description

Project #: 12226010  
 Drawn By: JTM  
 Checked By: MJW  
 Issue Date: 04.08.22

Sheet Title:  
**PAVING AND DIMENSION PLAN**

Sheet:  
**C100**



**DATA RECOGNITION CORPORATION  
MAPLE GROVE HEADQUARTERS  
13490 BASS LAKE ROAD  
MAPLE GROVE, MN 55311**

**LEGEND**

- 950 --- EXISTING CONTOURS
- 950 — PROPOSED CONTOURS - MAJOR INTERVAL
- 949 --- PROPOSED CONTOURS - MINOR INTERVAL
- - - - - GRADE BREAK LINE
- 2.0% GRADE SLOPE
- BIO ROLL, SEE DETAIL 1/C301
- INLET PROTECTION, SEE DETAIL 9/C300
- CONCRETE WASHOUT STATION (FIELD LOCATE)
- SPOT ABBREVIATIONS:  
TC - TOP OF CURB  
GL - GUTTER LINE  
B - BITUMUNOUS  
C - CONCRETE  
TS - TOP STEP  
BS - BOTTOM STEP  
(\*) - EXISTING TO BE VERIFIED

**GRADING NOTES**

1. Tree protection consisting of snow fence or safety fence installed at the drip line shall be in place prior to beginning any grading or demolition work at the site.
2. All elevations with an asterisk (\*) shall be field verified. If elevations vary significantly, notify the Engineer for further instructions.
3. Grades shown in paved areas represent finish elevation.
4. Restore all disturbed areas with 4" of good quality topsoil and seed.
5. All construction shall be performed in accordance with state and local standard specifications for construction.
6. All pavement grades within ADA parking stalls and access aisles shall not exceed 2.0% in any direction.

**EROSION CONTROL NOTES**

1. Install temporary erosion control measures (inlet protection, silt fence, and rock construction entrances) prior to beginning any excavation or demolition work at the site.
2. Erosion control measures shown on the erosion control plan are the absolute minimum. The contractor shall install temporary earth dikes, sediment traps or basins, additional siltation fencing, and/or disk the soil parallel to the contours as deemed necessary to further control erosion.
3. All construction site entrances shall be surfaced with crushed rock across the entire width of the entrance and from the entrance to a point 50' into the construction zone.
4. The toe of the silt fence shall be trenched in a minimum of 6". The trench backfill shall be compacted with a vibratory plate compactor.
5. All grading operations shall be conducted in a manner to minimize the potential for site erosion. Sediment control practices must be established on all down gradient perimeters before any up gradient land disturbing activities begin.
6. All exposed soil areas must be stabilized as soon as possible to limit soil erosion but in no case later than 14 days after the construction activity in that portion of the site has temporarily or permanently ceased. Temporary stockpiles without significant silt, clay or organic components (e.g., clean aggregate stockpiles, demolition concrete stockpiles, sand stockpiles) and the constructed base components of roads, parking lots and similar surfaces are exempt from this requirement.
7. The normal wetted perimeter of any temporary or permanent drainage ditch or swale that drains water from any portion of the construction site, or diverts water around the site, must be stabilized within 200 lineal feet from the property edge, or from the point of discharge into any surface water. Stabilization of the last 200 lineal feet must be completed within 24 hours after connecting to a surface water. Stabilization of the remaining portions of any temporary or permanent ditches or swales must be complete within 14 days after connecting to a surface water and construction in that portion of the ditch has temporarily or permanently ceased.
8. All storm sewer catch basins not needed for site drainage during construction shall be covered to prevent runoff from entering the storm sewer system. Catch basins necessary for site drainage during construction shall be provided with inlet protection.
9. In areas where concentrated flows occur (such as swales and areas in front of storm catch basins and intakes) the erosion control facilities shall be backed by stabilization structure to protect those facilities from the concentrated flows.
10. Inspect the construction site once every seven days during active construction and within 24 hours after a rainfall event greater than 0.5 inches in 24 hours.
11. All BMPs must be repaired, replaced, or supplemented when they become nonfunctional or the sediment reaches 1/3 of the capacity of the BMP. These repairs must be made within 24 hours of discovery, or as soon as field conditions allow access.
12. If sediment escapes the construction site, off-site accumulations of sediment must be removed in a manner and at a frequency sufficient to minimize off-site impacts.
13. All soils tracked onto pavement shall be removed daily.
14. Temporary soil stockpiles must have silt fence or other effective sediment controls, and cannot be placed in surface waters, including stormwater conveyances such as curb and gutter systems, or conduits and ditches unless there is a bypass in place for the stormwater.
15. Collected sediment, asphalt and concrete millings, floating debris, paper, plastic, fabric, construction and demolition debris and other wastes must be disposed of properly and must comply with MPCA disposal requirements.
16. Oil, gasoline, paint and any hazardous substances must be properly stored, including secondary containment, to prevent spills, leaks or other discharge. Restricted access to storage areas must be provided to prevent vandalism. Storage and disposal of hazardous waste must be in compliance with MPCA regulations.
17. External washing of trucks and other construction vehicles must be limited to a defined area of the site. Runoff must be contained and waste properly disposed of. No engine degreasing is allowed onsite.
18. All liquid and solid wastes generated by concrete washout operations must be contained in a leak-proof containment facility or impermeable liner. A compacted clay liner that does not allow washout liquids to enter ground water is considered an impermeable liner. The liquid and solid wastes must not contact the ground, and there must not be runoff from the concrete washout operations or areas. Liquid and solid wastes must be disposed of properly and in compliance with MPCA regulations. A sign must be installed adjacent to each washout facility to inform concrete equipment operators to utilize the proper facilities.
19. Upon completion of the project and stabilization of all graded areas, all temporary erosion control facilities (silt fences, hay bales, etc.) shall be removed from the site.

**Larson Engineering, Inc.**  
3524 Labore Road  
White Bear Lake, MN 55110  
651.481.9120 (f) 651.481.9201  
www.larsonengr.com

**DATA RECOGNITION CORPORATION**  
13490 BASS LAKE ROAD  
MAPLE GROVE, MN 55311

**2022 PAVEMENT REHABILITATION**  
13490 BASS LAKE ROAD  
MAPLE GROVE, MN 55311

I hereby certify that this plan, specifications or report was prepared by me or under my direct supervision and that I am a duly licensed Professional Engineer under the laws of the state of Minnesota.

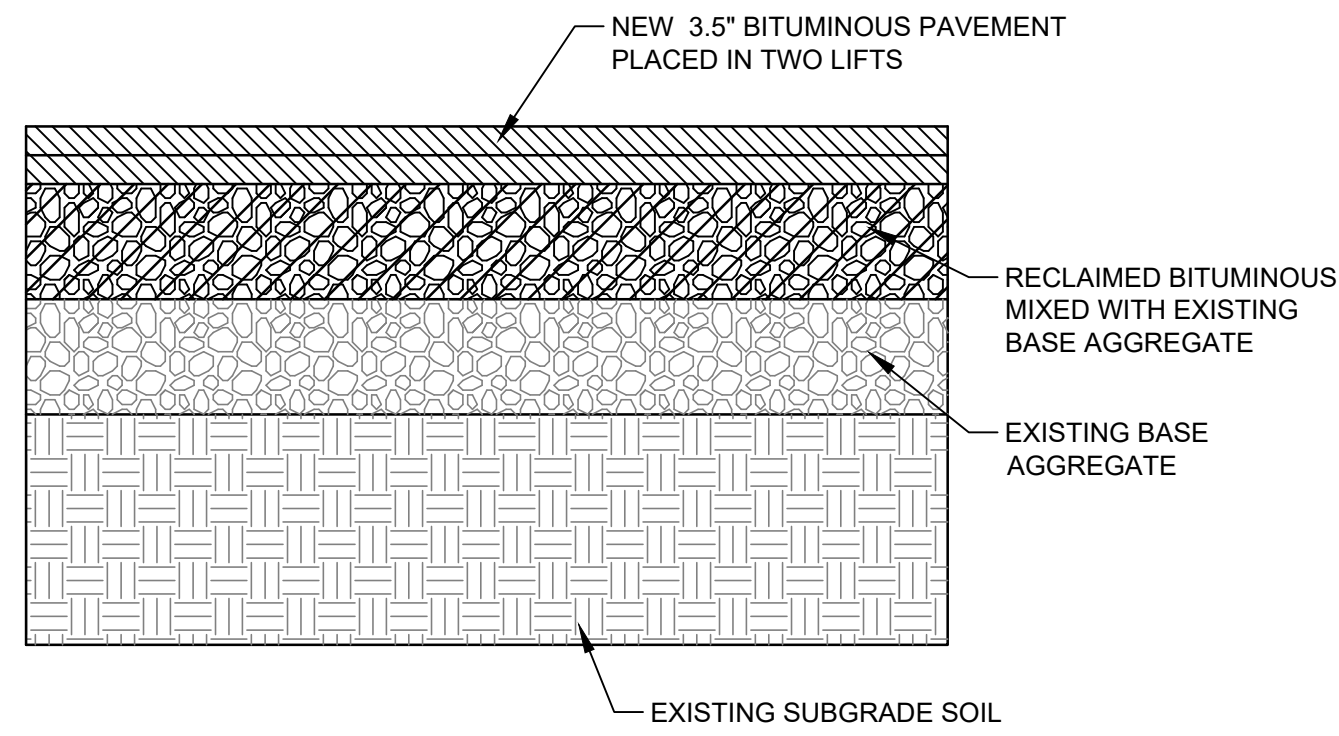
*Matt Woodruff*  
Matt Woodruff, P.E.  
Date: 04.08.22 Reg. No.: 41885

Rev.	Date	Description

Project #: 12226010  
Drawn By: JTM  
Checked By: MJW  
Issue Date: 04.08.22  
Sheet Title:

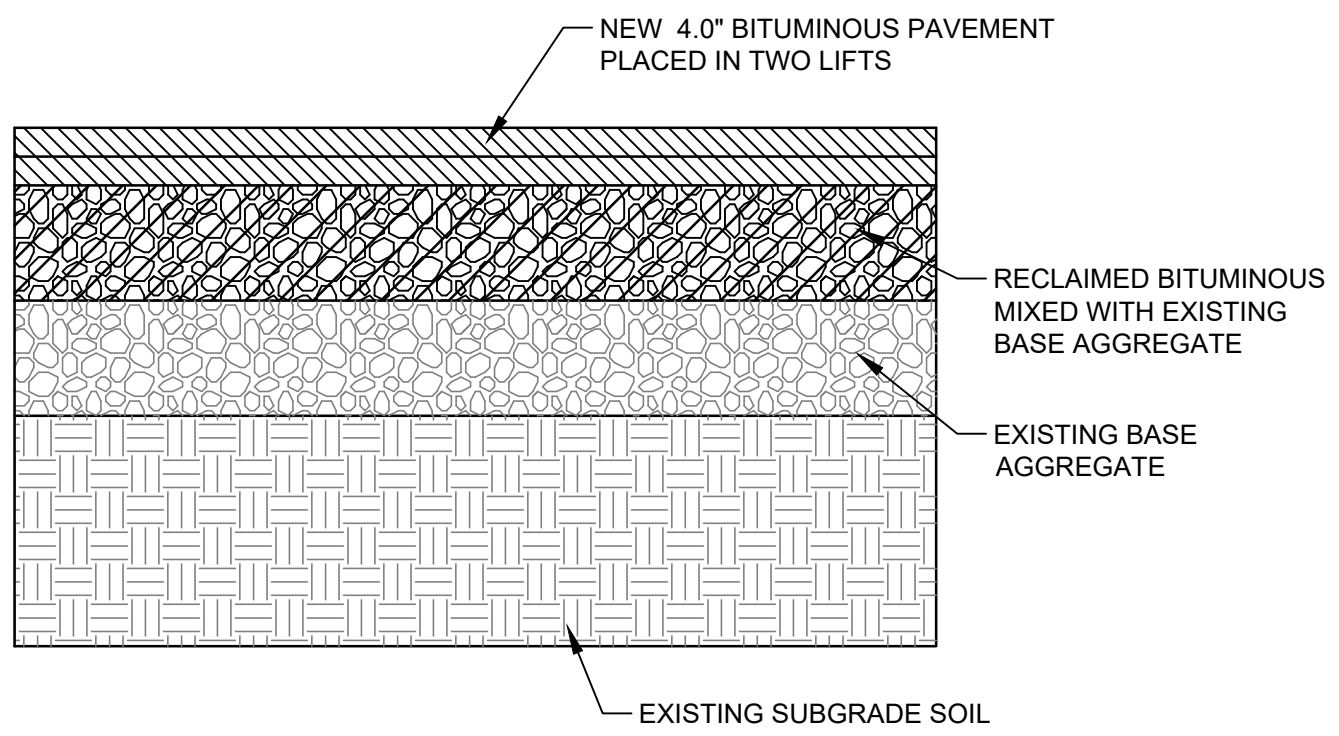
**GRADING AND EROSION CONTROL PLAN**

Sheet: **C200**



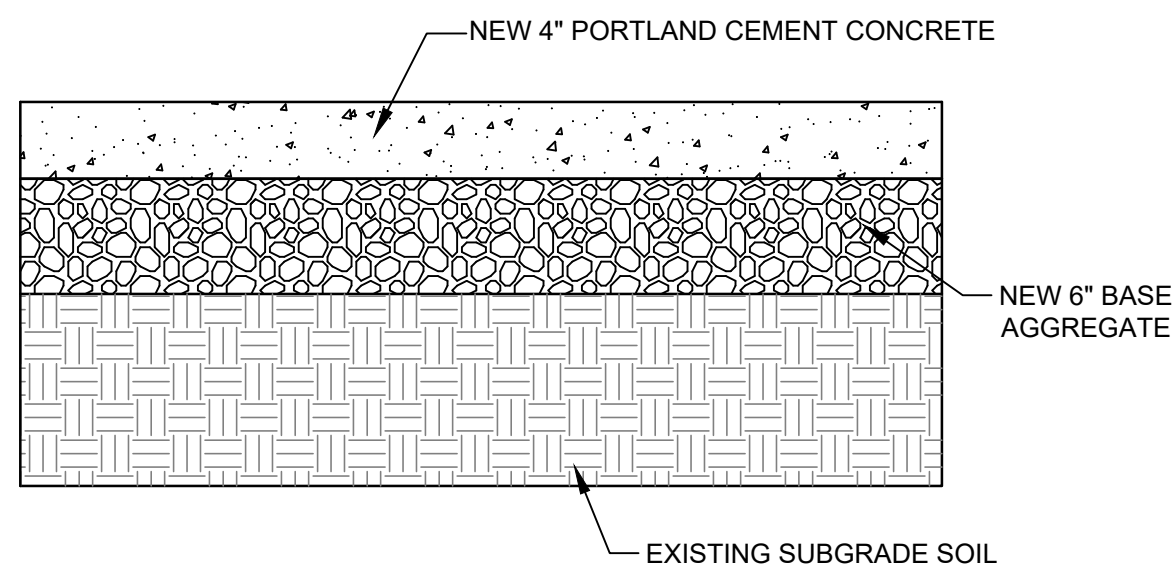
**RECLAIMED LIGHT-DUTY PAVEMENT DETAIL**

1  
C300  
NOT TO SCALE



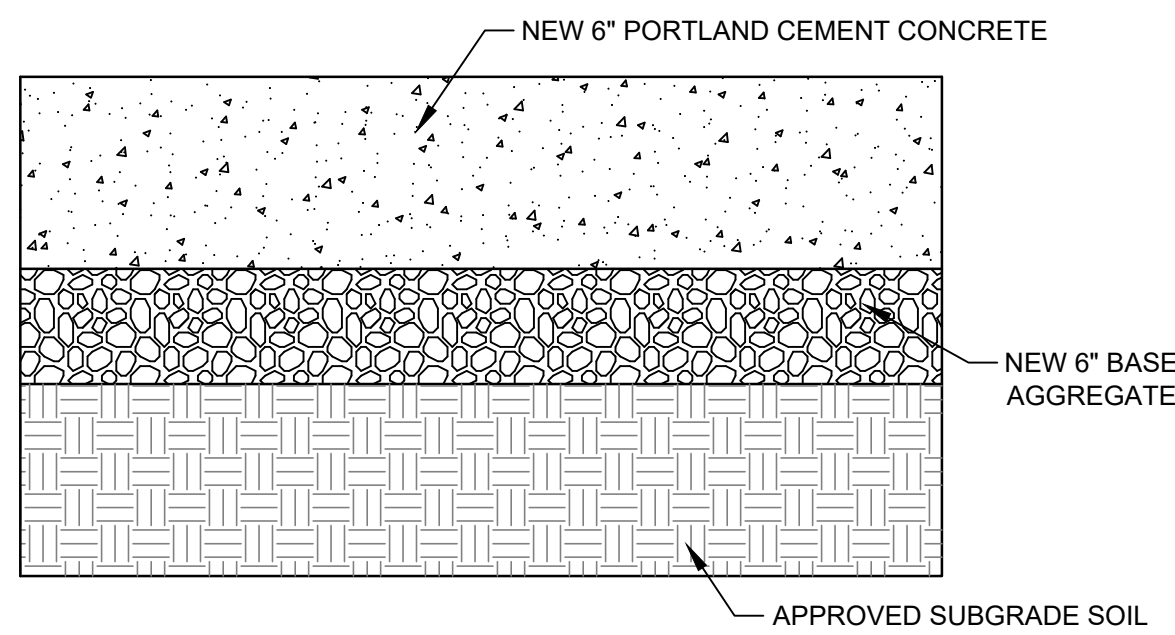
**RECLAIMED HEAVY-DUTY PAVEMENT DETAIL**

2  
C300  
NOT TO SCALE



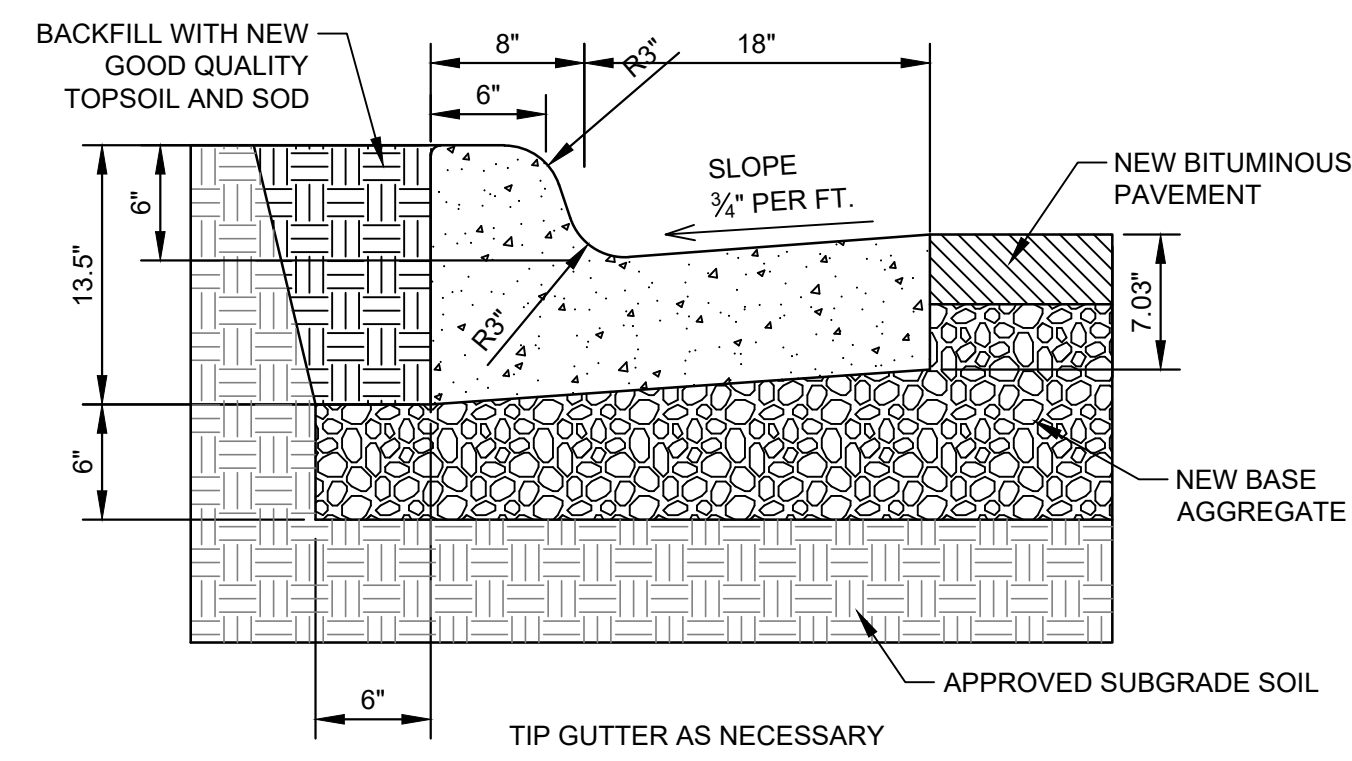
**LIGHT-DUTY CONCRETE CONSTRUCTION DETAIL**

3  
C300  
NOT TO SCALE



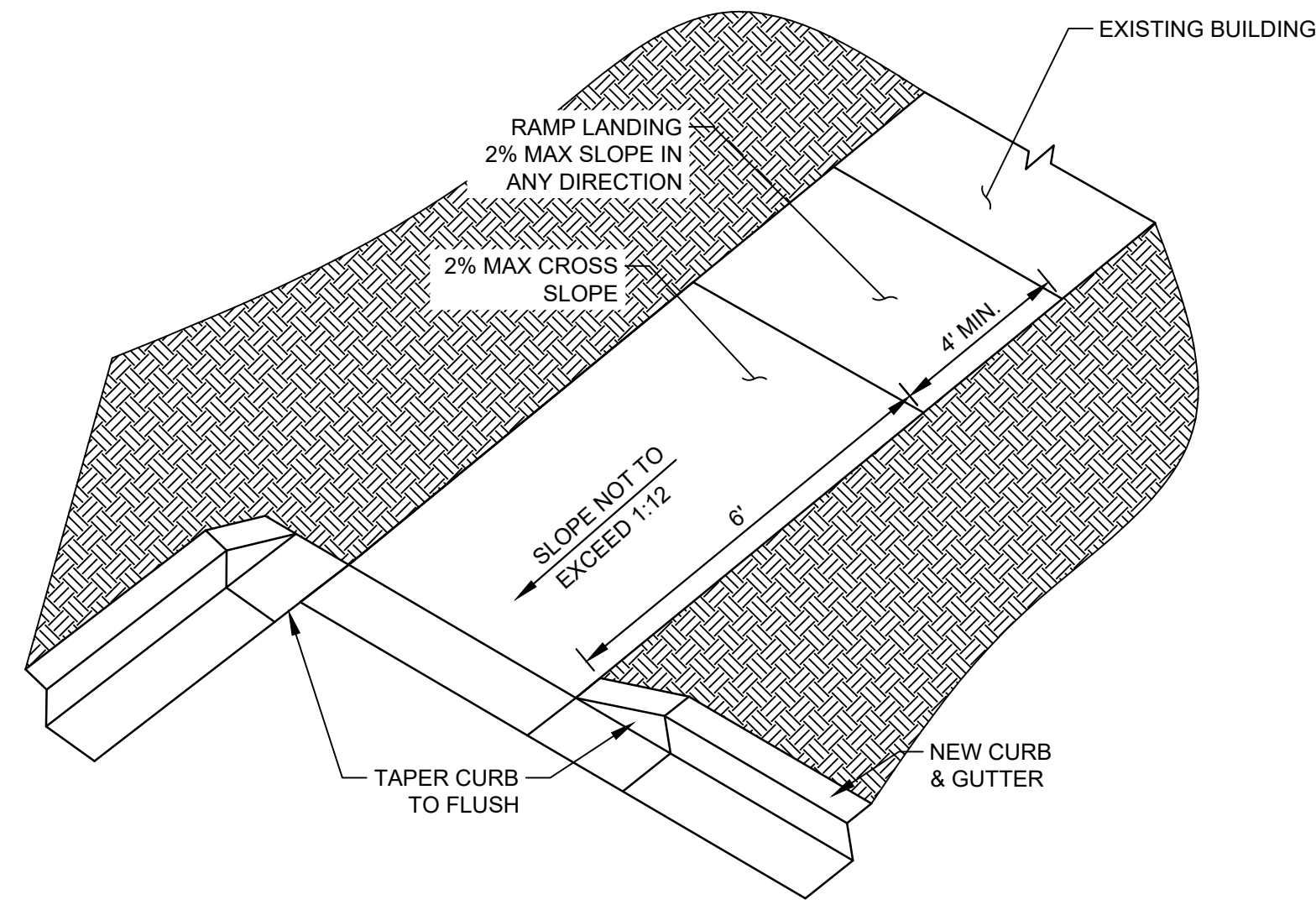
**HEAVY-DUTY CONCRETE CONSTRUCTION DETAIL**

4  
C300  
NOT TO SCALE



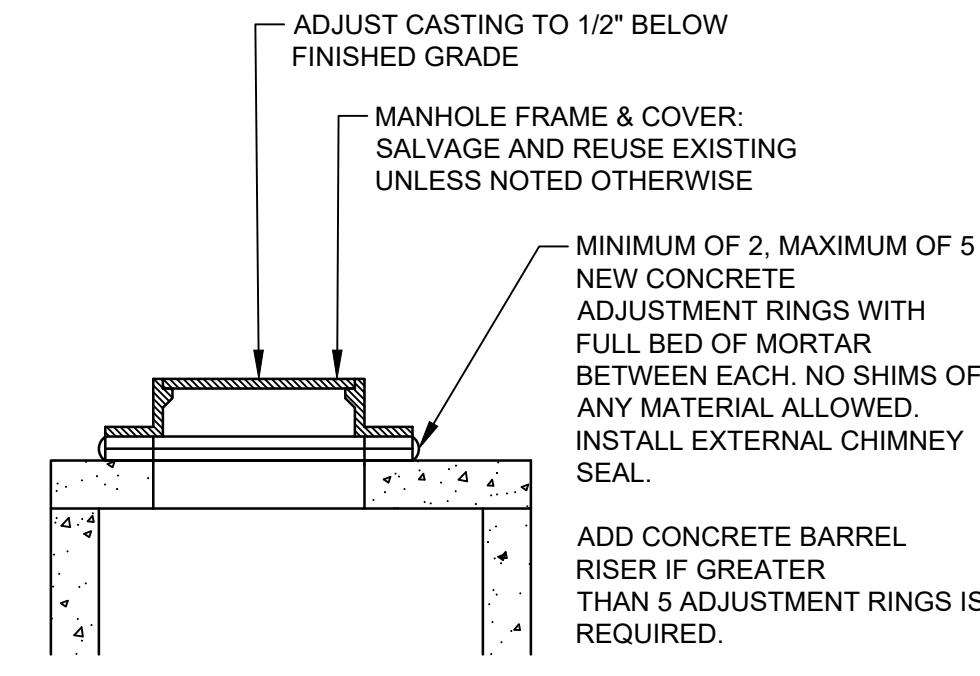
**B618 CONCRETE CURB & GUTTER DETAIL**

5  
C300  
NOT TO SCALE



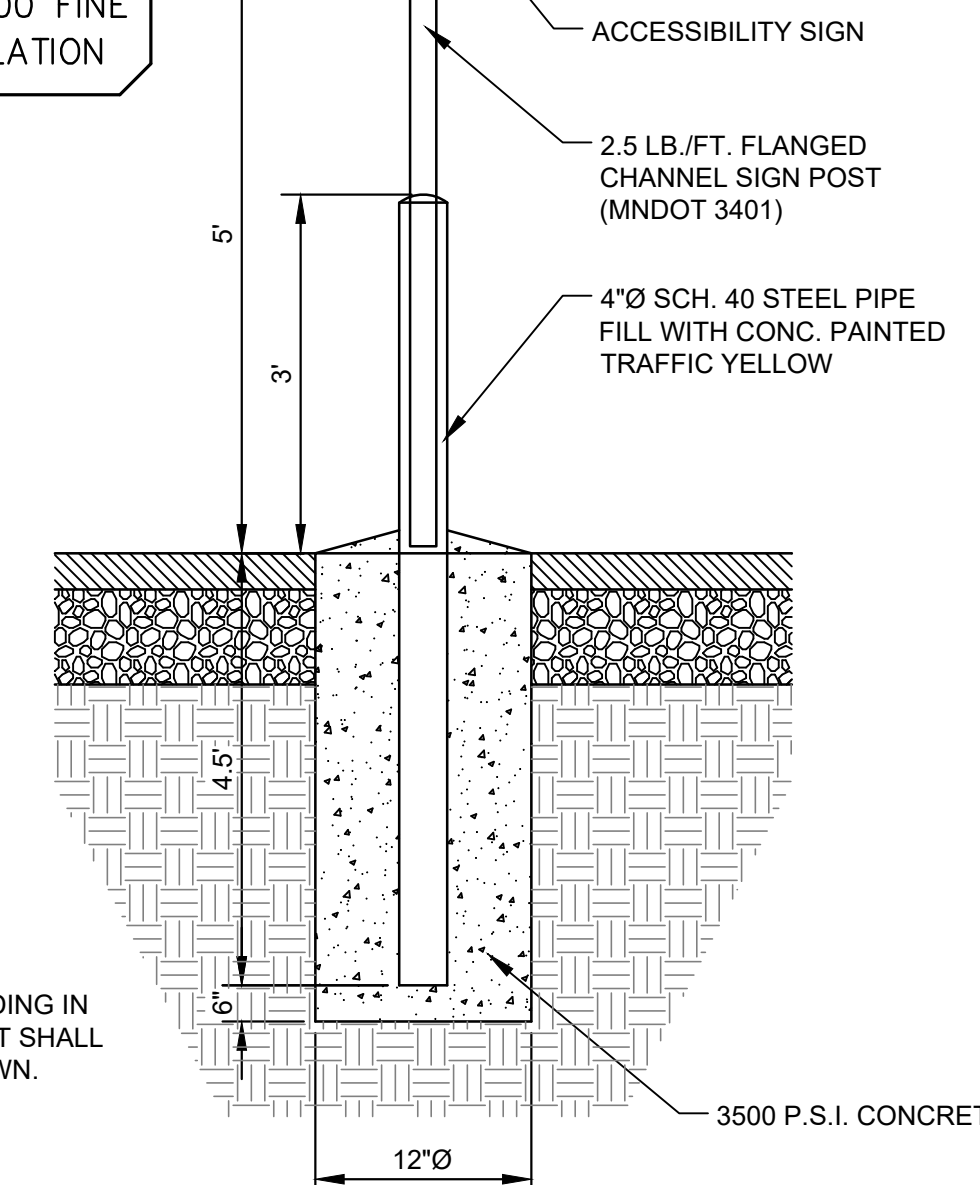
**SIDEWALK RAMP DETAIL**

6  
C300  
NOT TO SCALE



**STORM STRUCTURE ADJUSTMENT DETAIL**

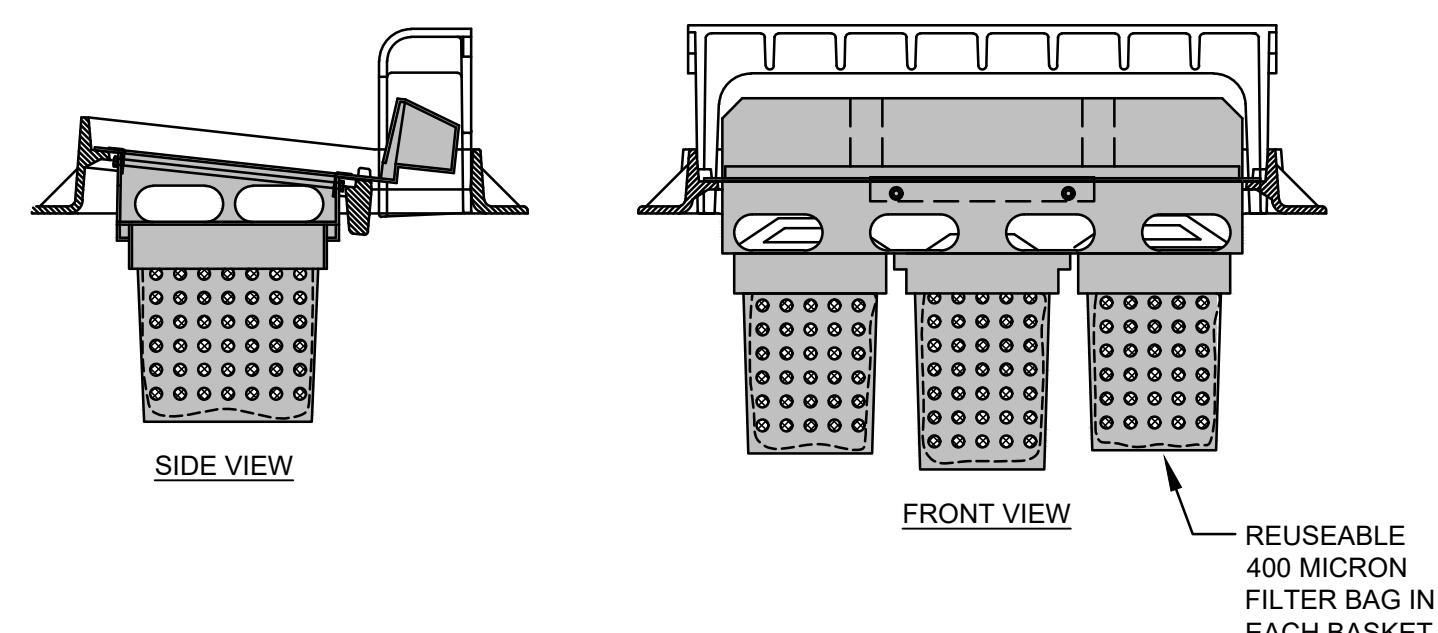
7  
C300  
NOT TO SCALE



**ACCESSIBLE PARKING SIGN AND POST DETAIL**

8  
C300  
NOT TO SCALE

FILTER AREA	6.5 FT <sup>2</sup>
OVERFLOW AREA	0.6 FT <sup>2</sup>
MAXIMUM OVERFLOW RATE (@ 7\"/>	
MAXIMUM OVERFLOW RATE (@ 13\"/>	
BASKET WEIGHT (EMPTY)	1 LB
BASKET WEIGHT (FULL-APPROX.)	70 LBS



**INFRA SAFE INLET PROTECTION DEVICE (OR EQUAL)**

9  
C300  
NOT TO SCALE

**Larson Engineering, Inc.**  
3524 Labore Road  
White Bear Lake, MN 55110  
651.481.9120 (f) 651.481.9201  
www.larsonengr.com

**DATA RECOGNITION CORPORATION**  
13490 BASS LAKE ROAD  
MAPLE GROVE, MN 55311

**2022 PAVEMENT REHABILITATION**  
13490 BASS LAKE ROAD  
MAPLE GROVE, MN 55311

I hereby certify that this plan, specifications or report was prepared by me or under my direct supervision and that I am a duly licensed Professional Engineer under the laws of the state of Minnesota.

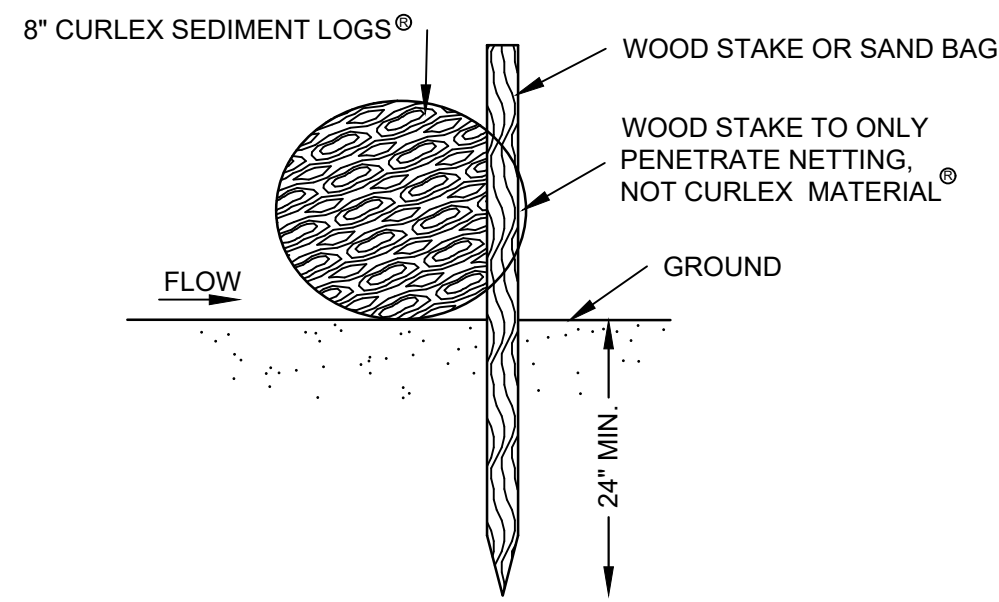
*Matt Woodruff*  
Matt Woodruff, P.E.  
Date: 04.08.22 Reg. No.: 41885

Rev.	Date	Description

Project #: 12226010  
Drawn By: JTM  
Checked By: MJW  
Issue Date: 04.08.22  
Sheet Title:

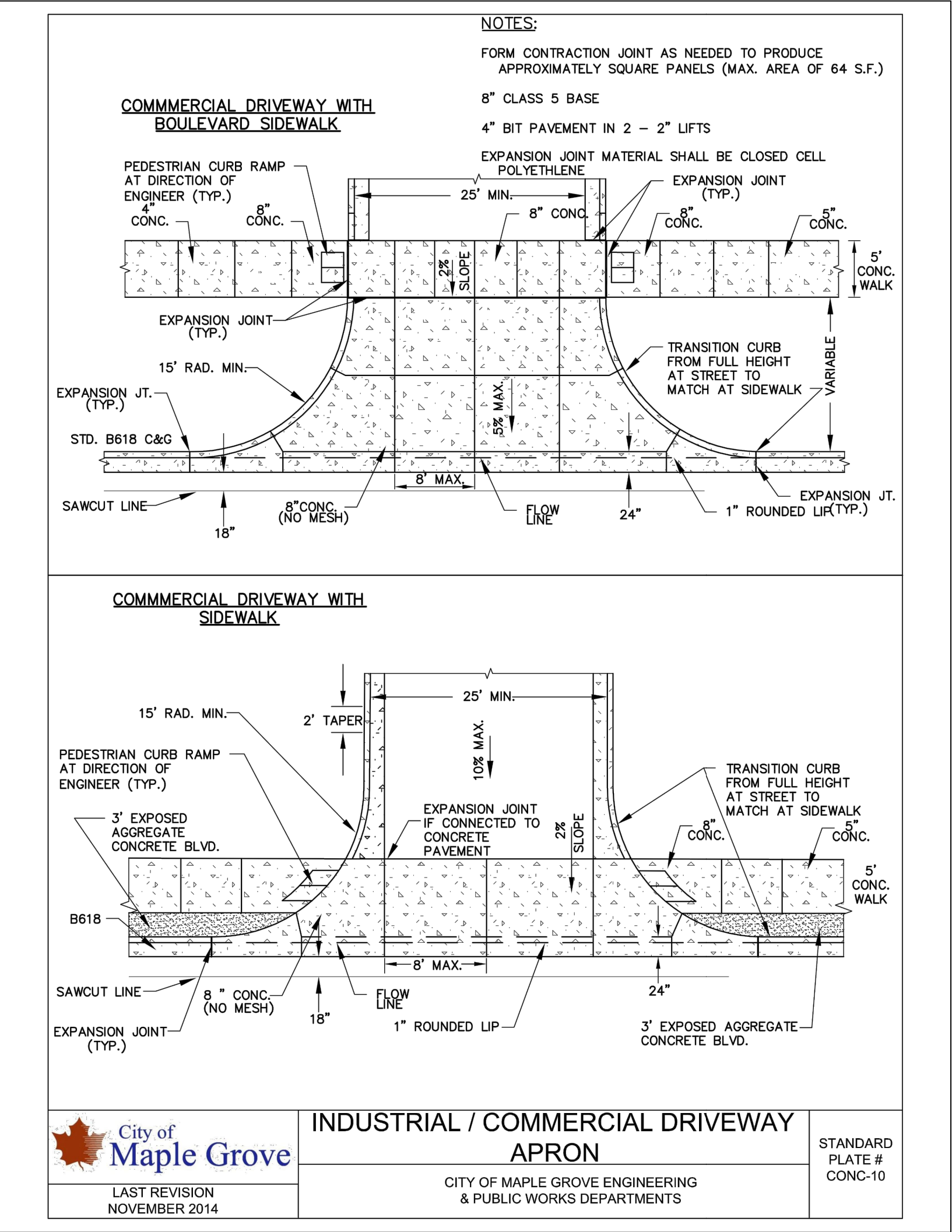
DETAILS

Sheet:  
**C300**



NOTES:  
1. STAKE OR SAND BAG SPACING SHALL BE 2 FEET O.C.

1  
C301  
**SEDIMENT ROLL DETAIL**  
NOT TO SCALE



2  
C301  
**INDUSTRIAL/COMMERCIAL DRIVEWAY APRON**  
NOT TO SCALE

**Larson Engineering, Inc.**  
3524 Labore Road  
White Bear Lake, MN 55110  
651.481.9120 (f) 651.481.9201  
www.larsonengr.com

Client:  
**DATA RECOGNITION CORPORATION**  
13490 BASS LAKE ROAD  
MAPLE GROVE, MN 55311

Project Title:  
**2022 PAVEMENT REHABILITATION**  
13490 BASS LAKE ROAD  
MAPLE GROVE, MN 55311

I hereby certify that this plan, specifications or report was prepared by me or under my direct supervision and that I am a duly licensed Professional Engineer under the laws of the state of Minnesota.

*Matt Woodruff*  
Matt Woodruff, P.E.  
Date: 04.08.22 Reg. No.: 41885

Rev.	Date	Description

Project #: 12226010  
Drawn By: JTM  
Checked By: MJW  
Issue Date: 04.08.22  
Sheet Title:

**DETAILS**

Sheet:  
**C301**