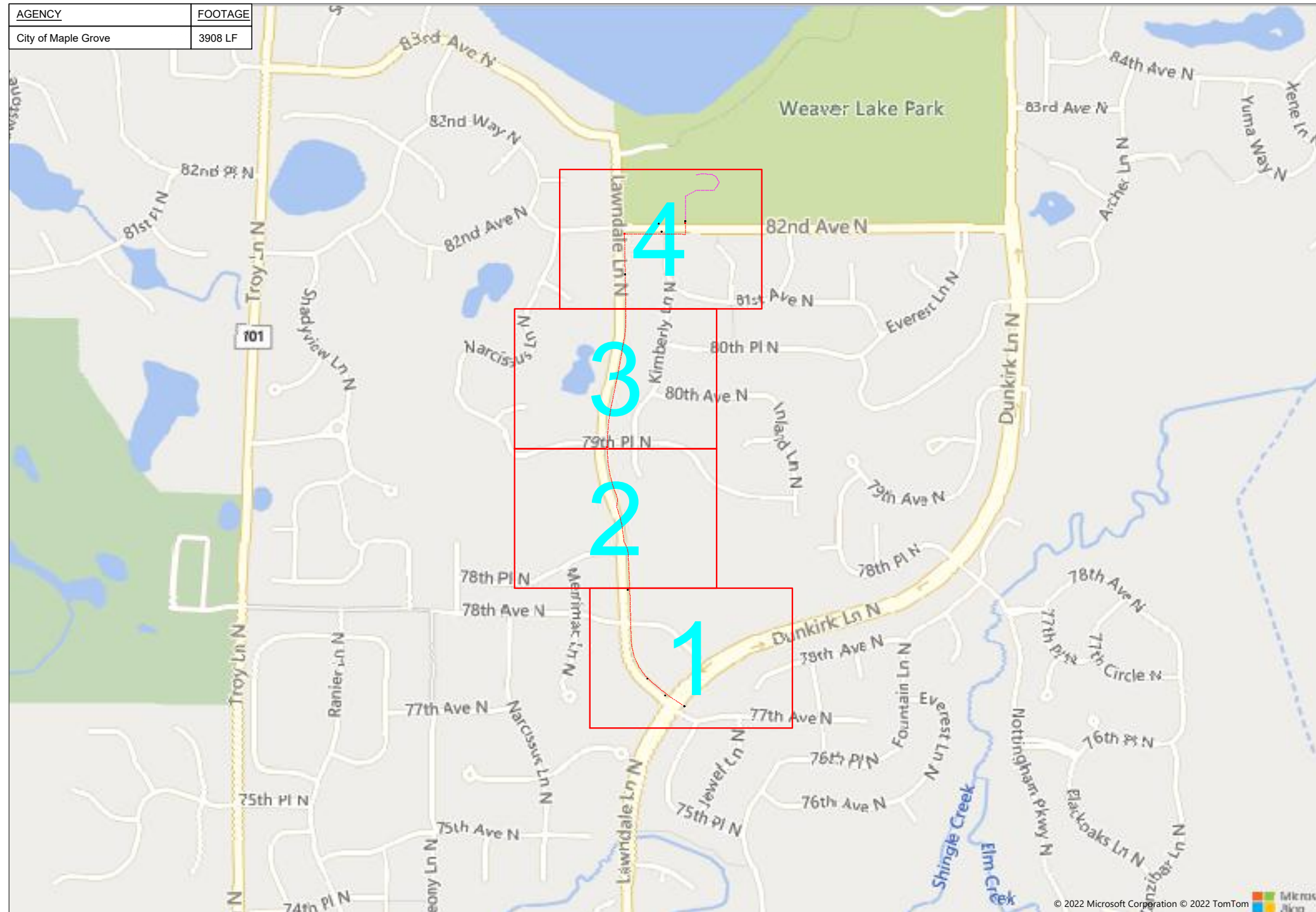
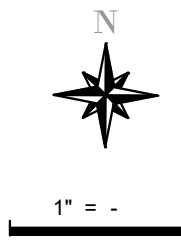


97871 TMO Maple Grove A100237A



| AGENCY | FOOTAGE |
|---------------------|---------|
| City of Maple Grove | 3908 LF |



| | |
|--------------|-----------------------|
| Route | 97871 TMO Maple Grove |
| City | Maple Grove |
| County | Hennepin |
| Filename | 97871 TMO Maple Grove |
| Work Order # | 97871 |

arvig
 160 2nd St SW
 Perham, MN 56573
 (218) 346-5500

| TRACKING | |
|-----------------|--------------------------|
| Staked By: | BA 4/21/22 |
| Drafted By: | WT 4/13/22 |
| Project Manager | James Crook 218-347-3601 |
| As-Built By: | - |
| Revision | - |

| Construction Totals | |
|----------------------|-------|
| Route Footage | 4533' |
| Total Underground | 4533' |
| Total Aerial | 0' |
| Underground (New) | 3908' |
| Aerial (New) | 0' |
| Overpull (Ex Duct) | 625' |
| Overlash (Ex Strand) | 0' |
| Plow | 0' |
| Bore | 3908' |
| New Vaults | 3 |
| New Peds | 0 |

GSOC
 GOPHER STATE ONE CALL
 1-800-252-1116
 www.gopherstateonecall.org

Prepared by:
compass
 consultants inc.
 Perham, MN 218-346-3600
 TrustCompass.com

OVERVIEW

17350 82ND AVE N MAPLE GROVE, MN 55311

Legend

Fiber Linetypes

| | |
|--|------------------------------------|
| | Proposed Underground Fiber - Bore |
| | Proposed Underground Fiber - Plow |
| | Proposed UG Fiber in Existing Duct |
| | Existing Underground Fiber |
| | Proposed Aerial Fiber |
| | Proposed Aerial Overlash |
| | Existing Aerial Fiber |
| | Proposed Aerial Strand |
| | Existing Aerial Strand |

Other Linetypes

| | |
|--|-----------------------------|
| | Rail Road |
| | Fence |
| | Retaining Wall |
| | Storm Sewer |
| | Sanitary Sewer |
| | Gas Line |
| | Tele./Comm. Line |
| | Water Line |
| | Electric Line |
| | Street light/Traffic signal |
| | District Cooling |
| | District Heating |
| | Force Main |
| | Other Utility or Unknown |
| | Utility Easement |

Abbreviations

- CL - Center Line
- R/W - Right of Way
- BOC - Back of Curb
- FC - Front of Curb
- EOR - Edge of Road
- S/W - Sidewalk
- HH - Handhole
- MH - Manhole
- PRT - Preterminated Cable
- PRG - Pigtail Cable

Symbols

| | |
|--|--------------------------|
| | Proposed Handhole |
| | Existing Handhole |
| | Reference Handhole |
| | Manhole |
| | Proposed Cabinet |
| | Existing Cabinet |
| | Bore Pit |
| | Proposed Splice Point |
| | Existing Splice Point |
| | Power Pole |
| | Proposed Slack Coil |
| | Existing Slack Coil |
| | Proposed Anchor/Down Guy |
| | Existing Anchor/Down Guy |
| | Proposed Riser |
| | Existing Riser |
| | Aerial Bond |
| | Aerial Ground |
| | BM53T - Fiber Marker |
| | BM53 - Fiber Marker |
| | Proposed PED |
| | Existing PED |
| | Proposed Splice Case |
| | Existing Splice Case |
| | Street Light |
| | Traffic Light |
| | Transformer |
| | Hydrant |
| | Catch Basin |
| | Tree |

| Materials | |
|---------------|------|
| 48 Fiber | 4983 |
| 1.25" Duct | 7806 |
| Vault (24x30) | 3 |
| Ground Rod | 3 |



1" = -

| | |
|--------------|-----------------------|
| Route | 97871 TMO Maple Grove |
| City | Maple Grove |
| County | Hennepin |
| Filename | 97871 TMO Maple Grove |
| Work Order # | 97871 |

arvig

160 2nd St SW
Perham, MN 56573
(218) 346-5500

| TRACKING | |
|-----------------|--------------------------|
| Staked By: | BA 4/21/22 |
| Drafted By: | WT 4/13/22 |
| Project Manager | James Crook 218-347-3601 |
| As-Built By: | - |
| Revision | - |

| Construction Totals | |
|----------------------|-------|
| Route Footage | 4533' |
| Total Underground | 4533' |
| Total Aerial | 0' |
| Underground (New) | 3908' |
| Aerial (New) | 0' |
| Overpull (Ex Duct) | 625' |
| Overlash (Ex Strand) | 0' |
| Plow | 0' |
| Bore | 3908' |
| New Vaults | 3 |
| New Peds | 0 |

GSOC
GOPHER STATE ONE CALL
1-800-252-1116
www.gopherstateonecall.org

Prepared by:
 compass consultants inc.
Perham, MN 218-346-3600
TrustCompass.com

LEGEND

Existing Access Points



Existing Windstream HH



Existing Windstream HH



1" = -

| | |
|--------------|-----------------------|
| Route | 97871 TMO Maple Grove |
| City | Maple Grove |
| County | Hennepin |
| Filename | 97871 TMO Maple Grove |
| Work Order # | 97871 |



160 2nd St SW
Perham, MN 56573
(218) 346-5500

TRACKING

| | | |
|-----------------|-------------|--------------|
| Staked By: | BA | 4/21/22 |
| Drafted By: | WT | 4/13/22 |
| Project Manager | James Crook | 218-347-3601 |
| As-Built By: | - | - |
| Revision | - | - |

GSOC

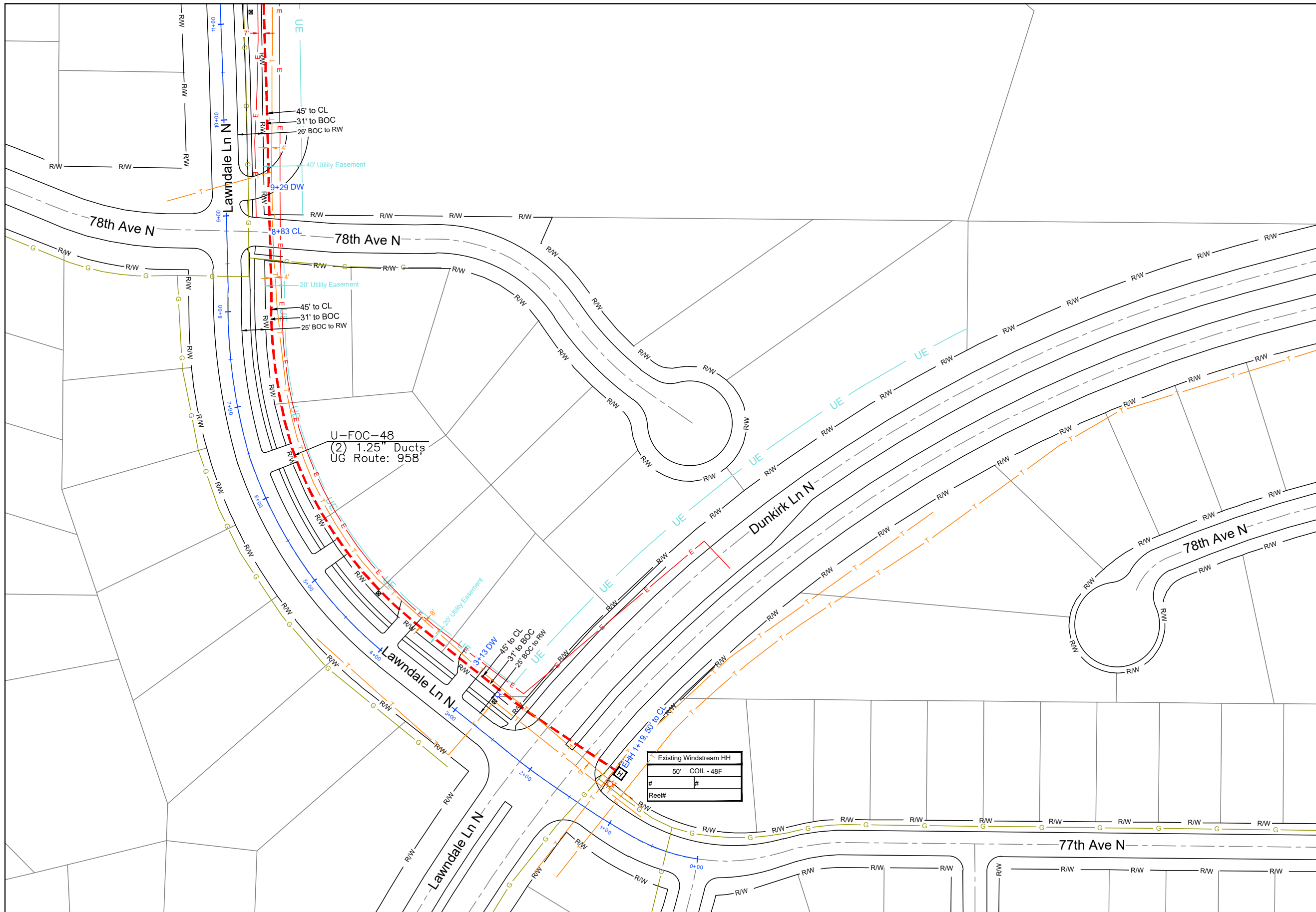
GOPHER STATE ONE CALL
1-800-252-1116
www.gopherstateonecall.org

Prepared by:



Perham, MN 218-346-3600
TrustCompass.com

EXISTING AP



U-FOC-48
 (2) 1.25" Ducts
 UG Route: 958'

| | |
|------------------------|---|
| Existing Windstream HH | |
| 50' COIL - 48F | |
| # | # |
| Reel# | |



1" = 100'

| | |
|--------------|-----------------------|
| Route | 97871 TMO Maple Grove |
| City | Maple Grove |
| County | Hennepin |
| Filename | 97871 TMO Maple Grove |
| Work Order # | 97871 |

arvig

160 2nd St SW
 Perham, MN 56573
 (218) 346-5500

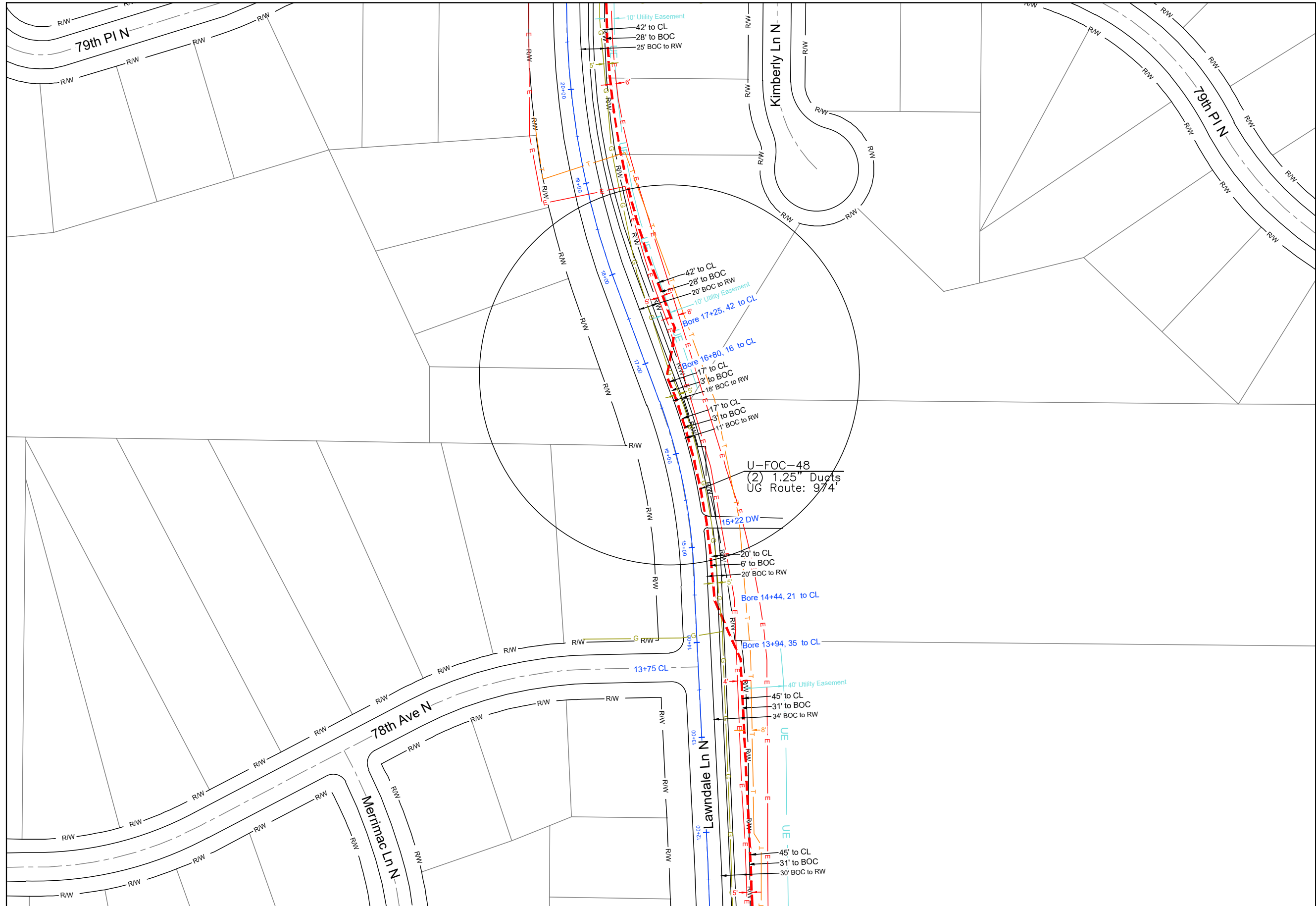
| TRACKING | |
|-----------------|--------------|
| Staked By: | |
| BA | 4/21/22 |
| Drafted By: | |
| WT | 4/13/22 |
| Project Manager | |
| James Crook | 218-347-3601 |
| As-Built By: | |
| - | - |
| Revision | |
| - | - |

GSOC
 GOPHER STATE ONE CALL
 1-800-252-1116
 www.gopherstateonecall.org

Prepared by:

compass
 consultants inc.
 Perham, MN 218-346-3600
 TrustCompass.com

97871-03



97871-01



1" = 97871-01

Route
97871 TMO Maple Grove

City
Maple Grove

County
Hennepin

Filename
97871 TMO Maple Grove

Work Order #
97871



160 2nd St SW
Perham, MN 56573
(218) 346-5500

TRACKING

Staked By:
BA 4/21/22

Drafted By:
WT 4/13/22

Project Manager
James Crook 218-347-3601

As-Built By:
- -

Revision
- - -

GSOC

GOPHER STATE ONE CALL
1-800-252-1116
www.gopherstateonecall.org

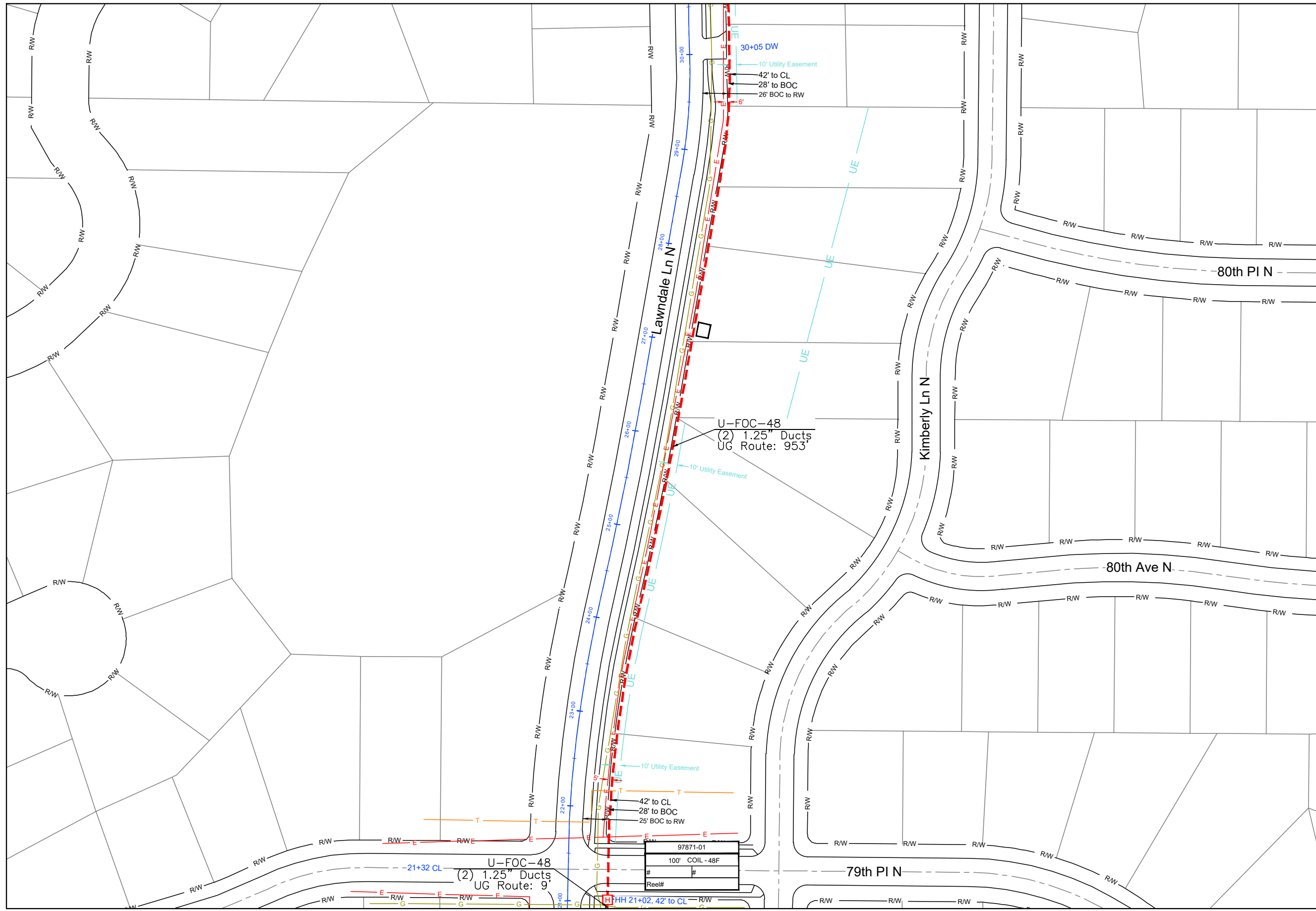
Prepared by:



Perham, MN 218-346-3600
TrustCompass.com

97871-02

97871-04



97871-02



1" = 100'

| | |
|--------------|-----------------------|
| Route | 97871 TMO Maple Grove |
| City | Maple Grove |
| County | Hennepin |
| Filename | 97871 TMO Maple Grove |
| Work Order # | 97871 |

arvig

160 2nd St SW
Perham, MN 56573
(218) 346-5500

| TRACKING | |
|-----------------|--------------|
| Staked By: | |
| BA | 4/21/22 |
| Drafted By: | |
| WT | 4/13/22 |
| Project Manager | |
| James Crook | 218-347-3601 |
| As-Built By: | |
| - | - |
| Revision | |
| - | - |

GSOC

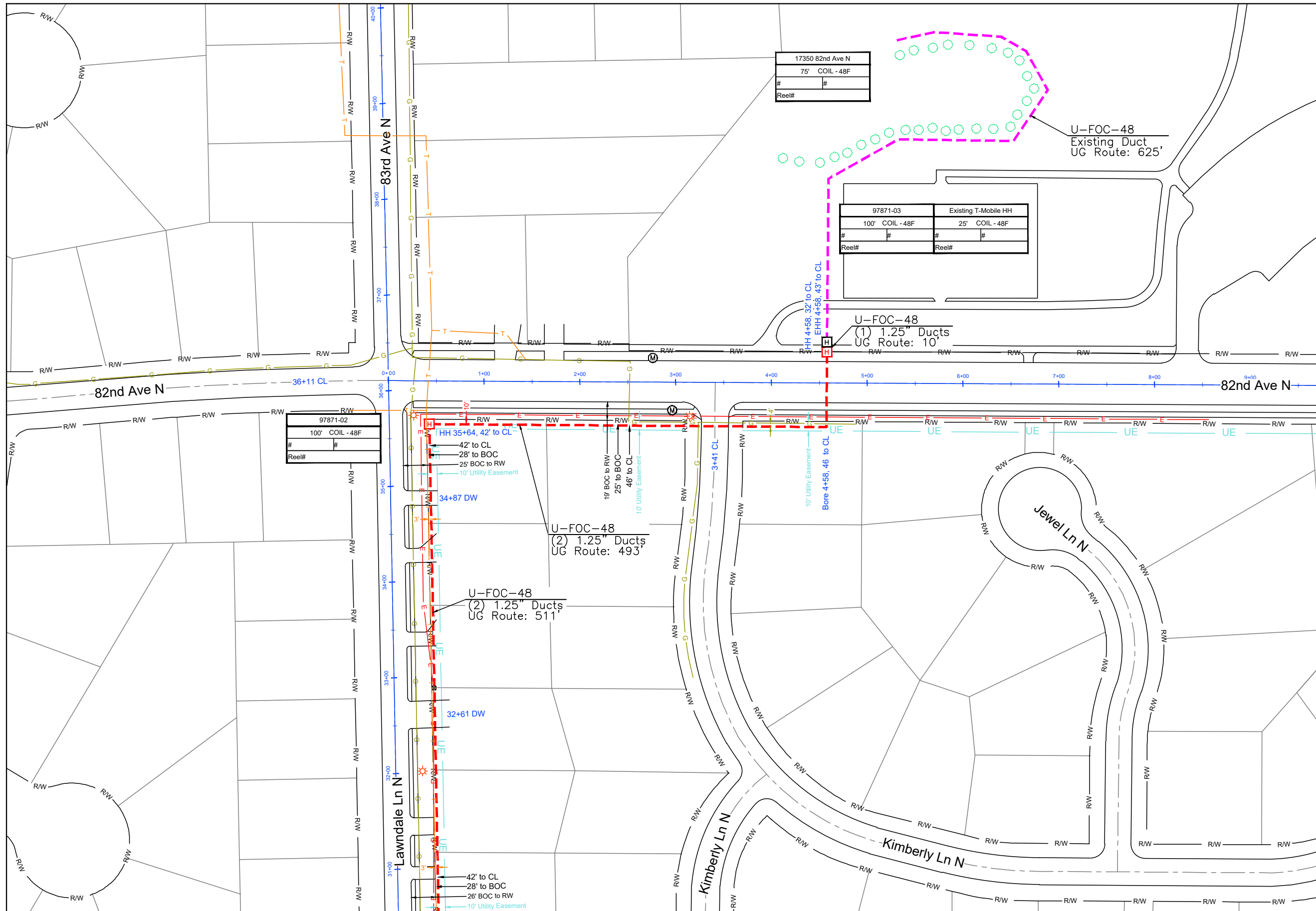
GOPHER STATE ONE CALL
1-800-252-1116
www.gopherstateonecall.org

Prepared by:

compass
consultants inc.

Perham, MN 218-346-3600
TrustCompass.com

97871-03



| | |
|------------------|---|
| 17350 82nd Ave N | |
| 75' COIL - 48F | |
| # | # |
| Reel# | |

| | |
|-----------------|----------------------|
| 97871-03 | Existing T-Mobile HH |
| 100' COIL - 48F | 25' COIL - 48F |
| # | # |
| Reel# | Reel# |

| | |
|----------|-----------------|
| 97871-02 | 100' COIL - 48F |
| # | # |
| Reel# | |



1" = 100'

| | |
|--------------|-----------------------|
| Route | 97871 TMO Maple Grove |
| City | Maple Grove |
| County | Hennepin |
| Filename | 97871 TMO Maple Grove |
| Work Order # | 97871 |



160 2nd St SW
Perham, MN 56573
(218) 346-5500

TRACKING

| | | |
|-----------------|-------------|--------------|
| Staked By: | BA | 4/21/22 |
| Drafted By: | WT | 4/13/22 |
| Project Manager | James Crook | 218-347-3601 |
| As-Built By: | - | - |
| Revision | - | - |

GSOC

GOPHER STATE ONE CALL
1-800-252-1116
www.gopherstateonecall.org



Perham, MN 218-346-3600
TrustCompass.com

97871-03

97871-04

| Date | From Vault | To Vault | Cable/Duct | Reel Number | Start # | End # | Total | Notes: | |
|--------------|------------|----------|------------|-------------|---------|------------|------------|---------|------------|
| | | | | | | | | | |
| | | | | | | | | | |
| | | | | | | | | | |
| | | | | | | | | | |
| | | | | | | | | | |
| | | | | | | | | | |
| | | | | | | | | | |
| | | | | | | | | | |
| | | | | | | | | | |
| | | | | | | | | | |
| | | | | | | | | | |
| | | | | | | | | | |
| | | | | | | | | | |
| | | | | | | | | | |
| | | | | | | | | | |
| | | | | | | | | | |
| | | | | | | | | | |
| | | | | | | | | | |
| | | | | | | | | | |
| | | | | | | | | | |
| | | | | | | | | | |
| Vault Size | | Vault # | Ground Rod | Vault Size | Vault # | Ground Rod | Vault Size | Vault # | Ground Rod |
| | Vault | | | | Vault | | | Vault | |
| | Vault | | | | Vault | | | Vault | |
| | Vault | | | | Vault | | | Vault | |
| | Vault | | | | Vault | | | Vault | |
| Locate Post | | | | | | | | | |
| Fiber Marker | | | | | | | | | |
| Tracer Wire | | | | | | | | | |



1" =

Route
97871 TMO Maple Grove

City
Maple Grove

County
Hennepin

Filename
97871 TMO Maple Grove

Work Order #
97871



160 2nd St SW
Perham, MN 56573
(218) 346-5500

TRACKING

Staked By:
BA 4/21/22

Drafted By:
WT 4/13/22

Project Manager
James Crook 218-347-3601

As-Built By:
- -

Revision
- - -

GSOC
GOPHER STATE ONE CALL
1-800-252-1116
www.gopherstateonecall.org

Prepared by:
 **compass**
consultants inc.
Perham, MN 218-346-3600
TrustCompass.com

Tally Sheet

FOR CONSTRUCTION USE ONLY