

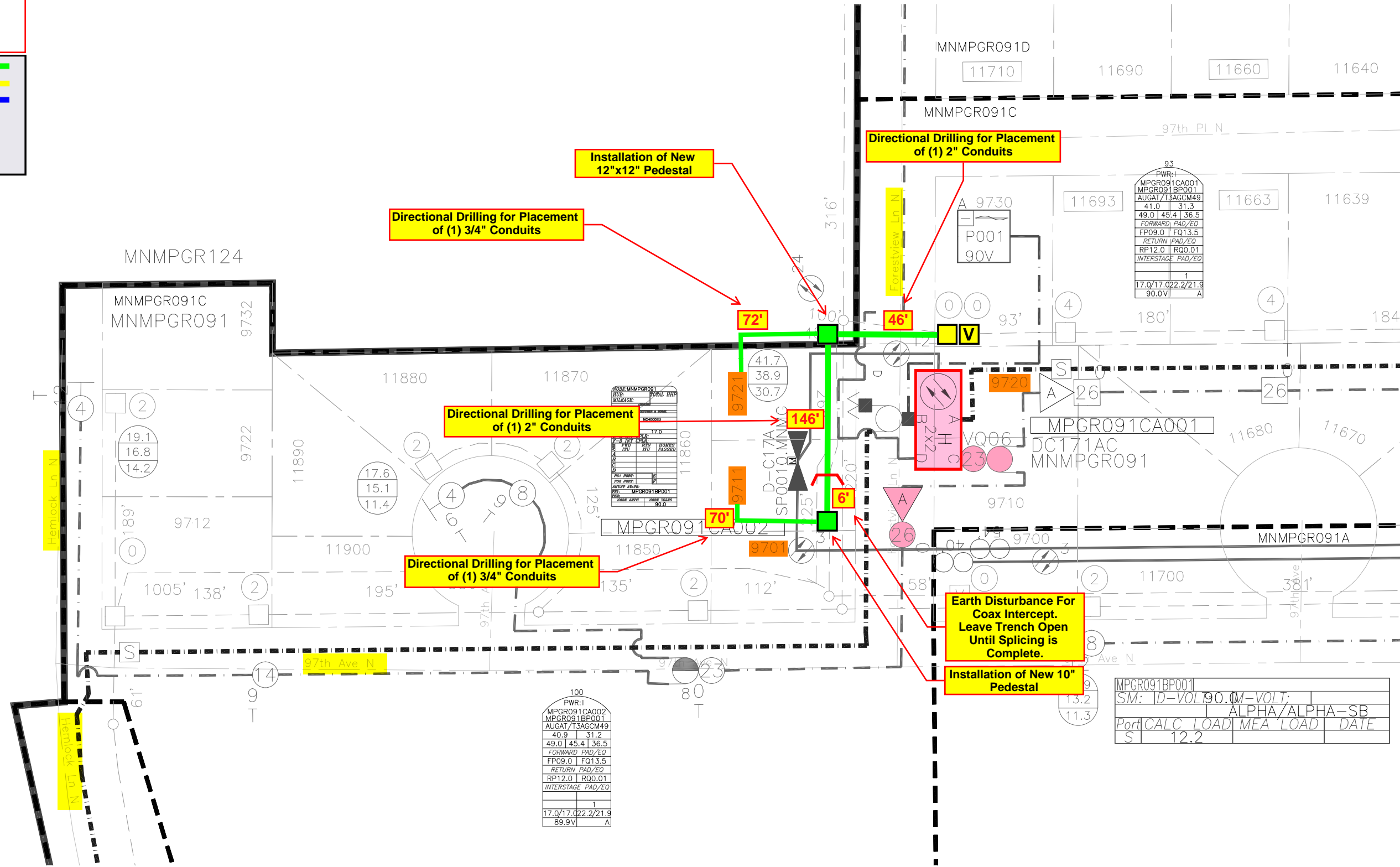
Forced Relo
9721 Forestview Ln N
Maple Grove, MN 55369
JB0001022223
Node: MNMPGR091
Legacy: D-C17-1

CONTACT INFO:
USI Contact: Anthony
612-434-5149
Alins@USI-Universal.com

Comcast Contact: McClay
651-925-6372

Green Lin = New Underground Placement	
Yellow Line = Existing Conduit	
Blue Line = Aerial Placement	
New Fiber Vault	
Existing Fiber Vault	
New Pedestal	
Existing Pedestal	

Construction Notes
 Feeder replacement for (2) spans. Existing amplifier used to be in the driveway of 9721, but now resides behind the gate on the south side of 9721. Customer is asking to move utilities to ROW and wreckout existing amp and 12x12 ped. In the process, we will place a new 10" ped and tap on the lot line of 9711/9701. Drop bores will be needed to serve 9721 and 9711. Please stay off of driveway for 9720.



100	PWR-1
MPGR091CA002	
MPGR091BP001	
AUGAT/T3AGCM49	
40.9	31.2
49.0	45.4
36.5	
FORWARD PAD/EQ	
FP09.0	FQ13.5
RETURN PAD/EQ	
RP12.0	RO0.01
INTERSTAGE PAD/EQ	
	1
17.0/17.022.2/21.9	
89.9V	A

MPGR091BP001	
SM: D-VOL 90.01-VOLT:	
	ALPHA/ALPHA-SB
Port	CALC LOAD MEA LOAD DATE
S	12.2