



**CP 18-23 Edgewater on Cook Lake
Maple Grove, MN
Lumen Facilities
Reviewed by RJ Allison on 05/20/2022**

Below are the following Lumen conflicts as part of the CP 18-23 Edgewater on Cook Lake Project in Maple Grove, MN.

SR Weidema: Andy Burke (aburke@srweidema.com)

Terra Technologies: RJ Allison (612.388.7375)

Lumen: Ben Snook (612.210.4435)

Construction Date: June 2022

Wire Center: OSSEMNXO

County: Hennepin

Zip Code: 55311

01. Walnut Grove, STA 110+00 (LT), Sheet 30

Conflict: Existing fiber ped in conflict with proposed storm sewer.

Solution: LUMEN to adjust ped approximately 20' North and set at existing grade. Maintain similar offset from edge of pavement. Maintain existing house drop.

02. Walnut Grove, STA 110+00 (LT to RT), Sheet 30

Conflict: Existing 1 fiber crossing proposed street reconstruction.

Solution: Road contractor to protect and support fiber.

03. Walnut Grove, STA 110+00 (RT), Sheet 30

Conflict: Existing handhole and ped in conflict with proposed street reconstruction.

Solution: LUMEN to adjust handhole and ped approximately 7' East and set at proposed grade. Coordinate with road contractor.

04. Walnut Grove, STA 110+00 to STA 114+50 (RT), Sheet 30

Conflict: Existing 144 fiber running parallel to proposed sanitary sewer and watermain.

Solution: LUMEN to protect and support fiber during watermain and sanitary sewer construction. Coordinate with road contractor to shift fiber out of trenches and rebury after utility work is complete.

05. Walnut Grove, STA 114+50 (RT), Sheet 30

Conflict: Existing handhole and fiber ped within grading limits.

Solution: LUMEN to lower handhole and ped approximately 6". Coordinate with road contractor.

06. Walnut Grove, STA 114+50 to STA 115+00 (RT), Sheet 30

Conflict: Existing 144 fiber running parallel to proposed sanitary sewer.

Solution: LUMEN to protect and support fiber during sanitary sewer construction. Coordinate with road contractor to shift fiber out of trench and rebury after utility work is complete.

CITY OF MAPLE GROVE, MN - HENNEPIN COUNTY
CP 18-23 EDGEWATER ON COOK LAKE
 LOCATED FROM WALNUT GROVE LN N TO 73RD AVE N

LUMEN WORK PLAN
PROJECT P.005213 / TERR-1008036

PLANS PREPARED FOR



LUMEN ENGINEER: **BILL BYERS**
 EMAIL: BILL.BYERS@LUMEN.COM
 PHONE: 651.829.5383
 LUMEN CONSTRUCTION CONTACT: **BEN SNOOK**
 EMAIL: BENJAMIN.SNOOK@LUMEN.COM
 PHONE: 612.210.4435
 WIRECENTER: OSSEMNXO

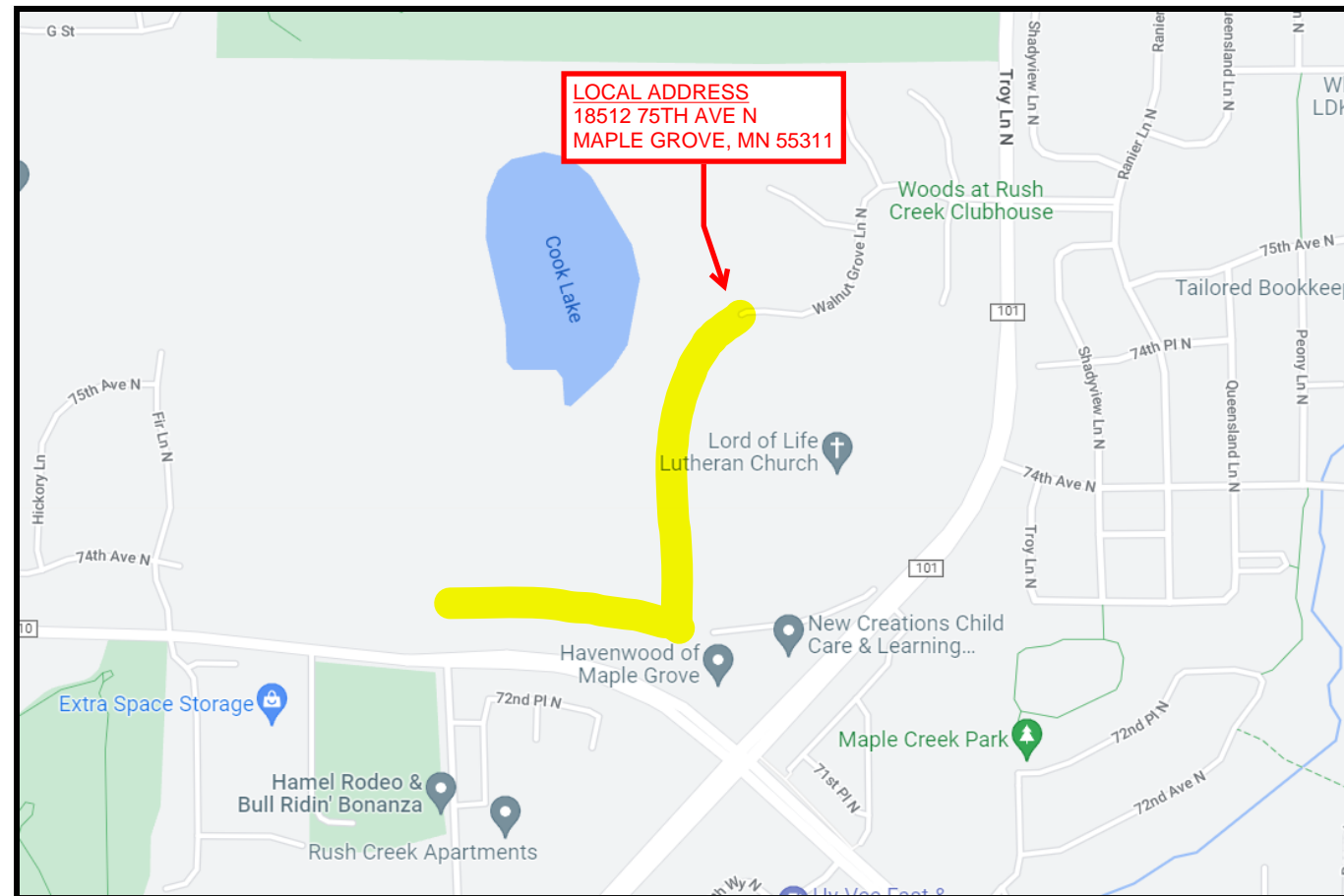
PLANS PREPARED BY



TT ENGINEER: **RJ ALLISON**
 PHONE: 612.388.7375
 EMAIL: RALLISON@TERRATECHLLC.NET

PROJECT CONTACT

OWNER: **KELLY MATZKE - CITY OF MAPLE GROVE**
 PHONE: 763.494.6365
 EMAIL: KMATZKE@MAPLEGROVEMN.GOV
 PROJECT ENGINEER: **JEFF KURTH - SRF**
 PHONE: 612.518.2145
 EMAIL: JKURTH@SRFCONSULTING.COM
 SURVEY/STAKING: **JEFF KURTH - SRF**
 PHONE: 612.518.2145
 EMAIL: JKURTH@SRFCONSULTING.COM
 ROAD CONTRACTOR: **ANDY BURKE - SR WEIDEMA**
 PHONE: TBD
 EMAIL: ABURKE@SRWEIDEMA.COM



LOCATION MAP
 NOT TO SCALE

FOR REFERENCE ONLY

PERMITS REQUIRED: YES NO

CITY: MAPLE GROVE

COUNTY:

STATE:

RAILROAD:

PIPELINE:

DNR:

MISCELLANEOUS:

CUTS REQUIRED: YES NO

FIBER OPTIC

COPPER

MIGRATIONS REQUIRED: YES NO

PRECONSTRUCTION MEETING DATE: TBD

EXPECTED ROADWAY CONSTRUCTION START DATE: 6/6/22

NOTES:

ALL EXISTING AND PROPOSED CONDITIONS ARE BASED ON INFORMATION PROVIDED BY OTHERS. LUMEN CANNOT BE RESPONSIBLE FOR THE ACCURACY OF INFORMATION AND/OR PLANS PROVIDED BY OUTSIDE PARTIES. FACILITY LOCATIONS, DEPTHS AND ELEVATIONS SHOULD BE FIELD VERIFIED PRIOR TO CONSTRUCTION.

PROPOSED DESIGN MODIFICATIONS ARE RECOMMENDATIONS ONLY AND SHOULD BE VERIFIED PRIOR TO CONSTRUCTION.

REVISION	DATE



GOPHER STATE ONE CALL
 1-800-252-1100 OR
 1-651-454-0002
WWW.GOPHERSTATEONCALL.ORG

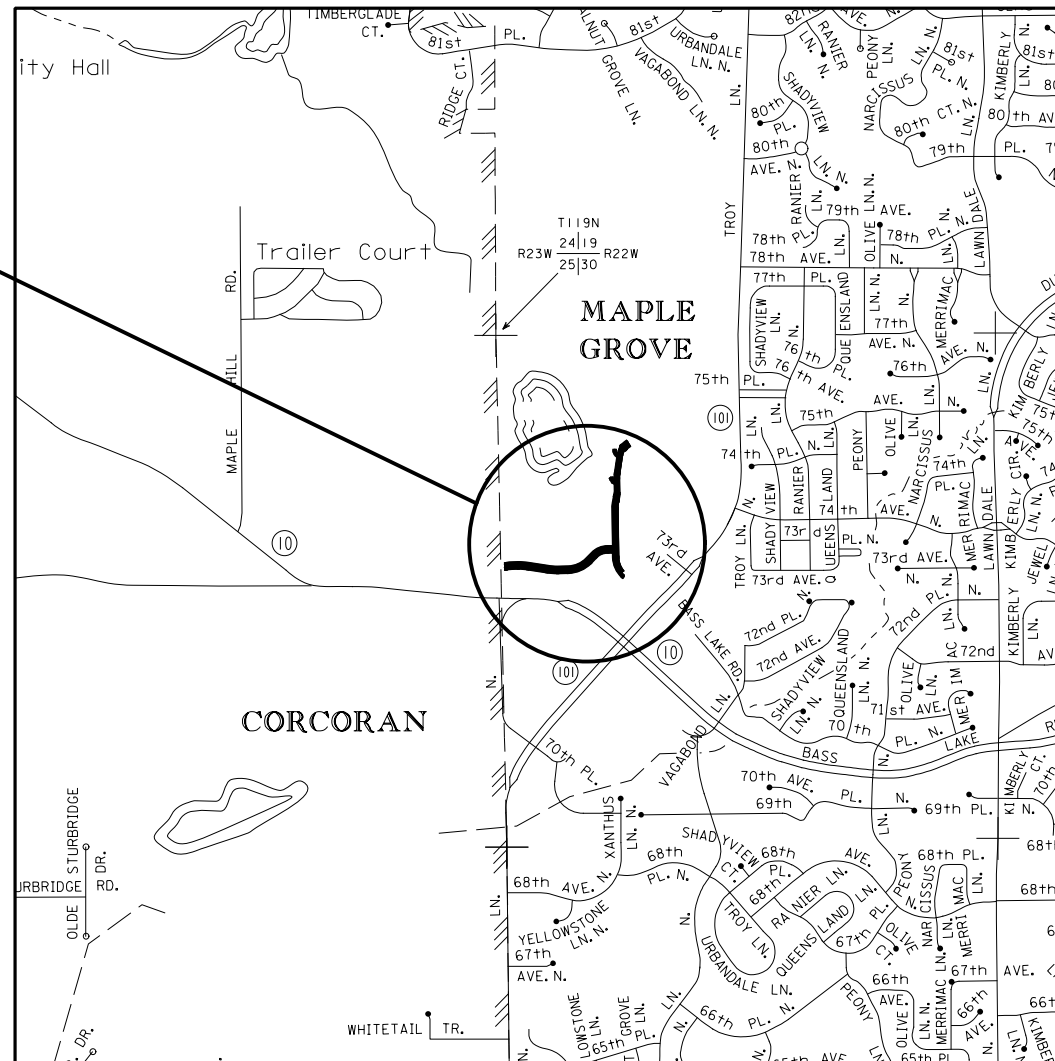
CITY OF MAPLE GROVE

HENNEPIN COUNTY, MINNESOTA

PLANS FOR: SELECT GRANULAR BORROW, AGGREGATE BASE,
BITUMINOUS BASE, BITUMINOUS SURFACE, STORM SEWER, CONCRETE CURB AND GUTTER,
CONCRETE WALK, SANITARY SEWER AND WATER MAIN

EDGEWATER ON COOK LAKE

CITY PROJECT NO. 18-23



PLAN SYMBOLS

- STATE LINE
- COUNTY LINE
- TOWNSHIP OR RANGE LINE
- SECTION LINE
- QUARTER LINE
- SIXTEENTH LINE
- RIGHT-OF-WAY LINE
- PRESENT RIGHT-OF-WAY LINE
- CONTROL OF ACCESS LINE
- PROPERTY LINE (Except Land Lines)
- VACATED PLATTED PROPERTY
- CORPORATE OR CITY LIMITS

- TRUNK HIGHWAY CENTER LINE
- CONC. RETAINING WALL
- RAILROAD
- RAILROAD RIGHT-OF-WAY LINE
- RIVER OR CREEK
- DRY RUN
- DRAINAGE DITCH
- DRAIN TILE
- CULVERT
- DROP INLET
- GUARD RAIL
- BARBED WIRE FENCE
- WOVEN WIRE FENCE
- CHAIN LINK FENCE
- RAILROAD SNOW FENCE
- STONE WALL OR FENCE
- HEDGE
- RAILROAD CROSSING SIGN
- RAILROAD CROSSING BELL
- ELECTRIC WARNING SIGN
- CROSSING GATE
- MEANDER CORNER
- MAIL BOX

- SPRINGS
- MARSH
- TIMBER
- ORCHARD
- BRUSH
- NURSERY

- CATCH BASIN
- FIRE HYDRANT
- CATTLE GUARD
- OVERPASS (Highway Over)
- UNDERPASS (Highway Under)
- BRIDGE

- BUILDING (One Story Frame)
- F-FRAME C-CONCRETE
- S-STONE T-TILE
- B-BRICK ST-STUCCO
- IRON PIPE OR ROD
- MONUMENT (STONE, CONCRETE, OR METAL)
- WOODEN HUB
- GRAVEL PIT
- SAND PIT
- BORROW PIT
- ROCK QUARRY

UTILITY SYMBOLS

- POWER POLE LINE
- TELEPHONE OR TELEGRAPH POLE LINE
- JOINT TELEPHONE AND POWER ON POWER POLES
- ANCHOR
- STEEL TOWER
- STREET LIGHT
- PEDESTAL (TELEPHONE CABLE TERMINAL)
- GAS MAIN
- WATER MAIN
- CONDUIT
- TELEPHONE CABLE IN CONDUIT
- ELECTRIC CABLE IN CONDUIT
- TELEPHONE MANHOLE
- ELECTRIC MANHOLE
- BURIED TELEPHONE CABLE
- BURIED ELECTRIC CABLE
- AERIAL TELEPHONE CABLE
- SEWER, (SANITARY)
- SEWER, (STORM)
- SEWER MANHOLE
- HANDHOLE

GOVERNING SPECIFICATIONS

THE 2020 EDITION OF THE MINNESOTA DEPARTMENT OF TRANSPORTATION "STANDARD SPECIFICATIONS FOR CONSTRUCTION" SHALL GOVERN.

ALL TRAFFIC CONTROL DEVICES SHALL CONFORM AND BE PLACED IN ACCORDANCE TO THE "MINNESOTA MANUAL ON UNIFORM TRAFFIC CONTROL DEVICES" (MN MUTCD) AND PART VI, "FIELD MANUAL FOR TEMPORARY TRAFFIC CONTROL ZONE LAYOUTS".

CITY OF MAPLE GROVE STANDARD SPECIFICATION FOR UTILITY AND STREET CONSTRUCTION 2021.

INDEX

SHEET NO.	SHEET DESCRIPTION
1	TITLE SHEET
2	GENERAL LAYOUT AND ALIGNMENT PLANS
3-4	STATEMENT OF ESTIMATED QUANTITIES
5	CONSTRUCTION/SOILS NOTES AND STANDARD PLATES
6	TYPICAL SECTIONS
7-21	STANDARD PLAN SHEETS
22-23	STAGING AND TRAFFIC CONTROL PLANS
24	ALIGNMENT PLANS
25-26	ALIGNMENT TABULATIONS
27-28	EXISTING TOPOGRAPHY AND UTILITY PLANS
29-30	REMOVAL PLANS
31-32	CONSTRUCTION PLANS
33-34	PROFILES (ROADWAY AND DRIVEWAY)
35-36	INTERSECTION AND PEDESTRIAN CURB RAMP DETAILS
37-45	DRAINAGE AND SUPERELEVATION PLANS, PROFILES, TABULATIONS AND DETAILS
46-48	STORM WATER POLLUTION PREVENTION PLANS
49-53	SANITARY SEWER AND WATERMAIN PLANS
54-55	EROSION CONTROL AND TURN ESTABLISHMENT PLANS
56-57	SIGNING AND STRIPING PLANS
58	CROSS SECTION LAYOUT
59-79	CROSS SECTIONS

THIS PLAN CONTAINS 79 SHEETS



I HEREBY CERTIFY THAT THIS PLAN WAS PREPARED BY ME OR UNDER MY DIRECT SUPERVISION AND THAT I AM A DULY LICENSED PROFESSIONAL ENGINEER UNDER THE LAWS OF THE STATE OF MINNESOTA.

SIGNATURE *Tyler Smith*
DATE 01/21/2022 LIC. NO. 56135 PRINT NAME TYLER A. SMITH

Legend

	EXISTING	REMOVE/ABANDON	PROPOSED
Existing Copper Cable	T	T	T
Existing Fiber Cable	F/O	F/O	F/O
Existing Overhead Wire	OHT	OHT	OHT
Existing Pedestal	■	■	■
Existing Manhole	●	●	●
Existing Handhole	■	■	■
Existing Pole	●	●	●
Cross Box	■	■	■

INDEX

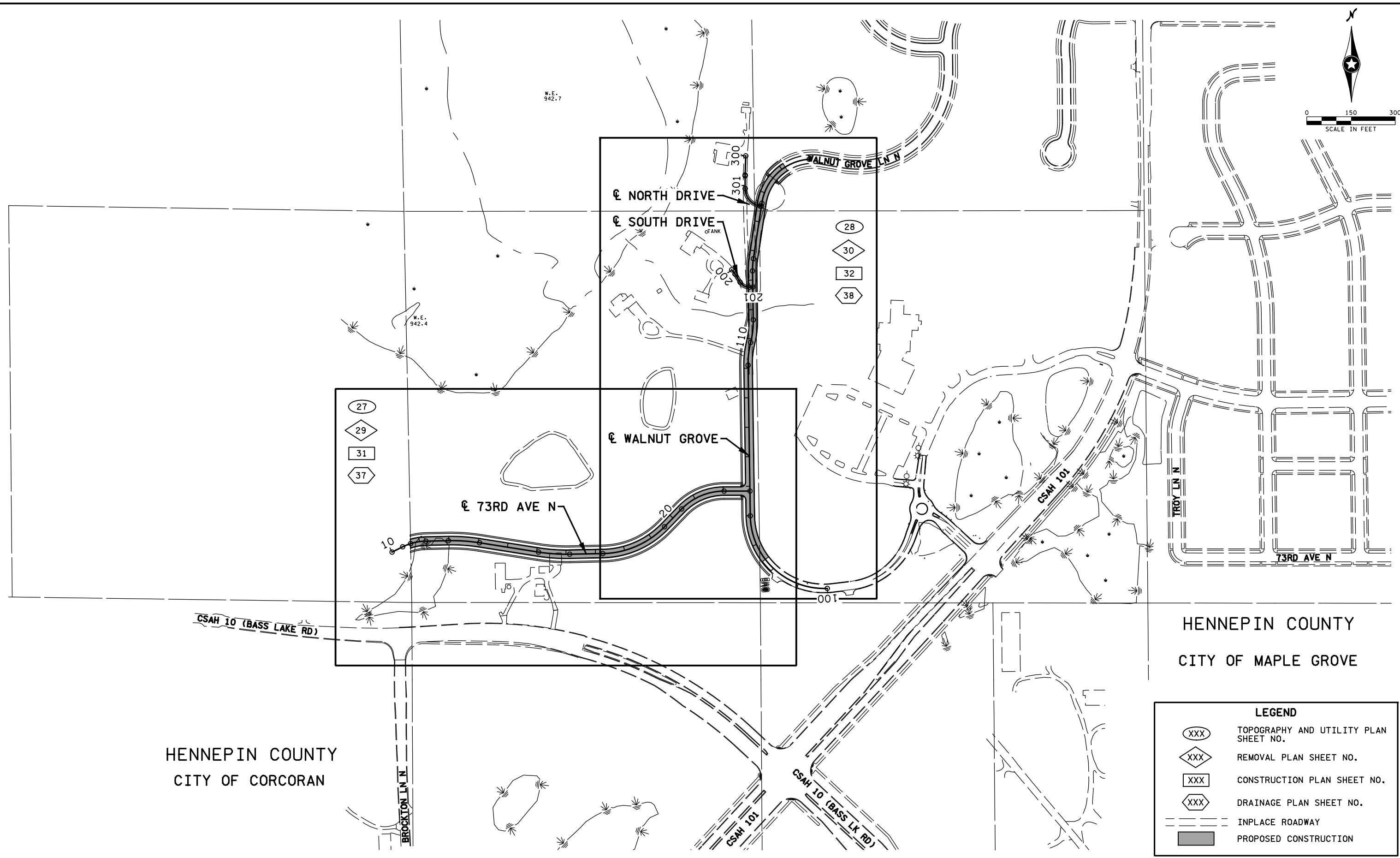
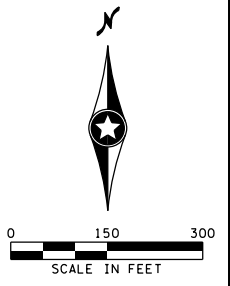


PROJECT LOCATION
COUNTY : HENNEPIN
DISTRICT : METRO

PLAN REVISIONS		
DATE	REVISION	APPROVED BY
09/08/2021	ADDENDUM #1	TYLER A. SMITH

THIS PLAN AND/OR SPECIFICATION WAS PREPARED SPECIFICALLY FOR THIS PROJECT, AND ANY RE-USE OF DETAILS OR SPECIFICATIONS ON OTHER PROJECTS IS NOT INTENDED OR AUTHORIZED BY THE DESIGNER. LIABILITY FOR ANY RE-USE ON OTHER PROJECTS IS THE RESPONSIBILITY OF THE PERSON, AGENCY, OR CORPORATION USING PLAN OR SPECIFICATION DATA FROM THIS PROJECT.

THE SUBSURFACE UTILITY INFORMATION IN THIS PLAN IS UTILITY QUALITY LEVEL D. THIS QUALITY LEVEL WAS DETERMINED ACCORDING TO GUIDELINES OF C1/ASCE 38-02. ENTITLED "STANDARD GUIDELINES FOR THE COLLECTION AND DEPICTION OF EXISTING SUBSURFACE UTILITY DATA".



HENNEPIN COUNTY
CITY OF CORCORAN

HENNEPIN COUNTY
CITY OF MAPLE GROVE

LEGEND	
(XXX)	TOPOGRAPHY AND UTILITY PLAN SHEET NO.
◇XXX◇	REMOVAL PLAN SHEET NO.
▭XXX▭	CONSTRUCTION PLAN SHEET NO.
⬡XXX⬡	DRAINAGE PLAN SHEET NO.
---	INPLACE ROADWAY
█	PROPOSED CONSTRUCTION

I hereby certify that this plan, specification, or report was prepared by me or under my direct supervision and that I am a duly Licensed Professional Engineer under the laws of the State of Minnesota.
 Print Name: TYLER A. SMITH
Tyler Smith
 Date: 01/21/2022 License #: 56135

DRAWN BY
A. AFFELDT
 DESIGNED BY
W. GRAY
 CHECKED BY
T. SMITH
 CITY PROJECT NO. 18-23 COMM. NO. 11856



CITY OF MAPLE GROVE
GENERAL LAYOUT
COOK LAKE

SHEET
2
OF
79

NO	DATE	BY	CKD	APPR	REVISION

1:37:37 PM
 1/21/2022
 H:\Projects\11856\Drawings\11856\11856\11856\11856_g101.dgn

- NOTES:
- (E) REMOVE PIPE APRON
 - (G) REMOVE BY OTHERS

NO LUMEN CONFLICTS

GENERAL NOTES:

ALL TREES TO BE CLEARED AND GRUBBED WILL BE MARKED BY THE FIELD ENGINEER.

PROTECT ALL TREES THAT ARE NOT MARKED FOR REMOVAL (INCIDENTAL).

SHRUB REMOVAL SHALL BE INCIDENTAL.

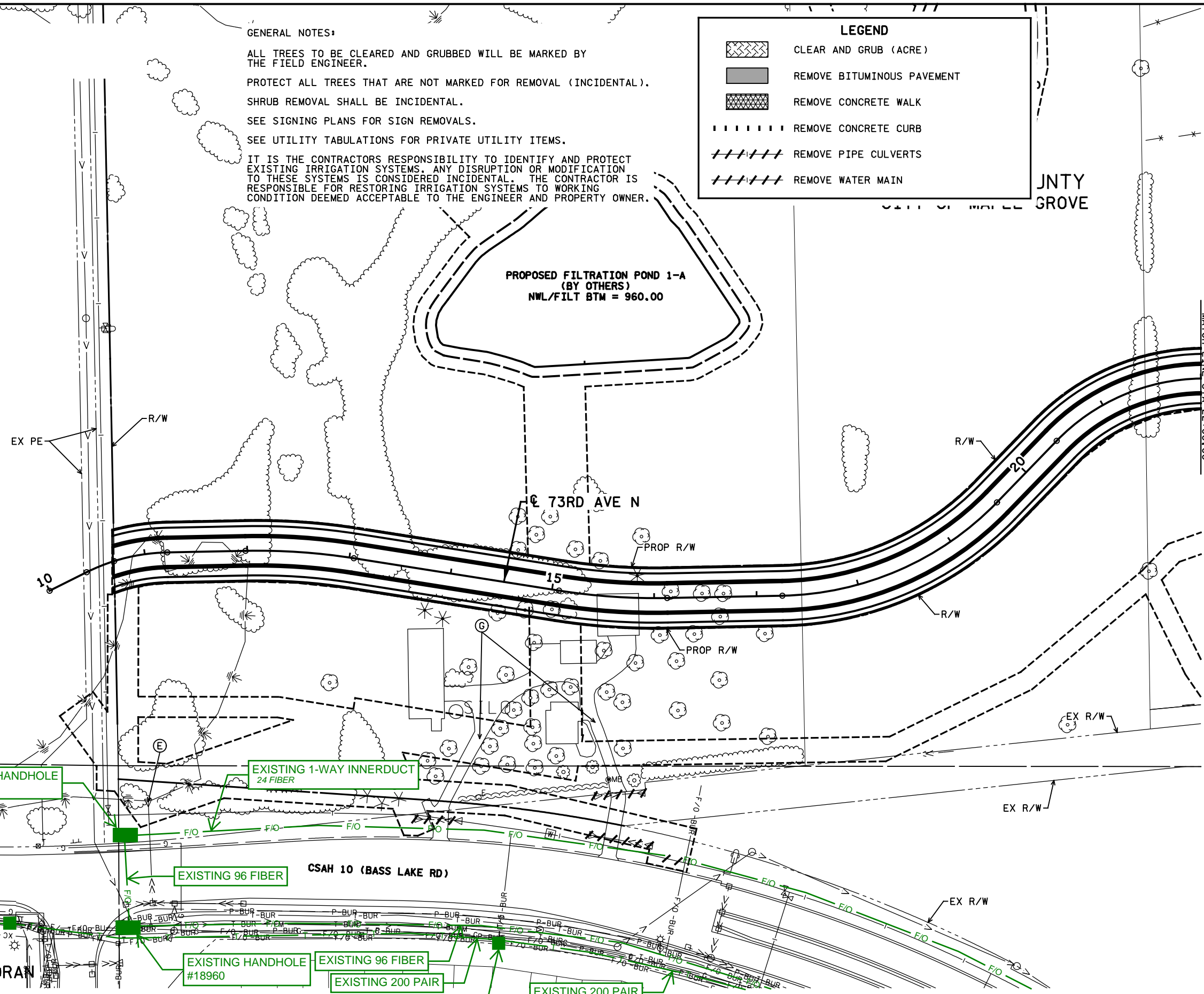
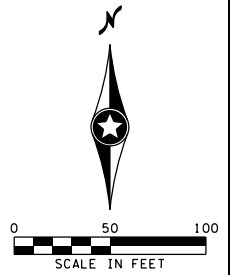
SEE SIGNING PLANS FOR SIGN REMOVALS.

SEE UTILITY TABULATIONS FOR PRIVATE UTILITY ITEMS.

IT IS THE CONTRACTORS RESPONSIBILITY TO IDENTIFY AND PROTECT EXISTING IRRIGATION SYSTEMS. ANY DISRUPTION OR MODIFICATION TO THESE SYSTEMS IS CONSIDERED INCIDENTAL. THE CONTRACTOR IS RESPONSIBLE FOR RESTORING IRRIGATION SYSTEMS TO WORKING CONDITION DEEMED ACCEPTABLE TO THE ENGINEER AND PROPERTY OWNER.

LEGEND

- CLEAR AND GRUB (ACRE)
- REMOVE BITUMINOUS PAVEMENT
- REMOVE CONCRETE WALK
- REMOVE CONCRETE CURB
- REMOVE PIPE CULVERTS
- REMOVE WATER MAIN



EXISTING HANDHOLE #18962BLR

EXISTING 1-WAY INNERDUCT 24 FIBER

EXISTING 96 FIBER

EXISTING HANDHOLE #18960

EXISTING 96 FIBER

EXISTING 200 PAIR

EXISTING PEDESTAL #1312-9007

EXISTING 200 PAIR

1:38:25 PM 11/22/2022 H:\p\scs\111000\11856\Des\gn\PlanSheets\Final\Plan\11856_rem01.dgn

NO	DATE	BY	CKD	APPR	REVISION

that this plan, specification, or report be or under my direct supervision and Licensed Professional Engineer under the laws of the State of Minnesota.

Print Name: TYLER A. SMITH

Tyler Smith

Date: 01/21/2022 License #: 56135

DRAWN BY A. AFFELDT
DESIGNED BY W. GRAY
CHECKED BY T. SMITH
COMM. NO. 11856



CITY OF MAPLE GROVE

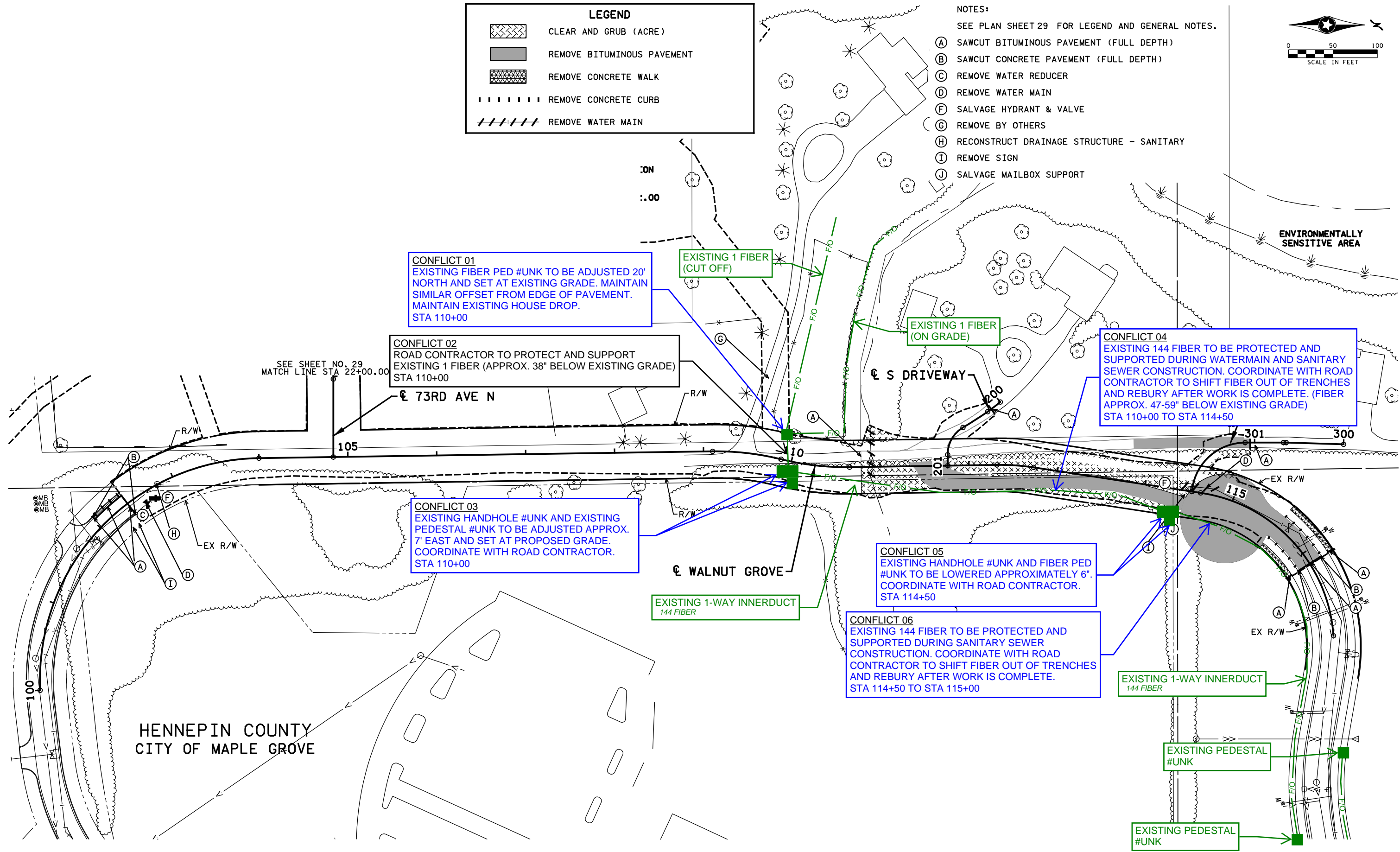
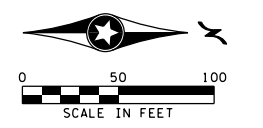
REMOVAL PLANS
COOK LAKE

SHEET 29 OF 79

LEGEND

	CLEAR AND GRUB (ACRE)
	REMOVE BITUMINOUS PAVEMENT
	REMOVE CONCRETE WALK
	REMOVE CONCRETE CURB
	REMOVE WATER MAIN

- NOTES:**
- SEE PLAN SHEET 29 FOR LEGEND AND GENERAL NOTES.
 - (A) SAWCUT BITUMINOUS PAVEMENT (FULL DEPTH)
 - (B) SAWCUT CONCRETE PAVEMENT (FULL DEPTH)
 - (C) REMOVE WATER REDUCER
 - (D) REMOVE WATER MAIN
 - (F) SALVAGE HYDRANT & VALVE
 - (G) REMOVE BY OTHERS
 - (H) RECONSTRUCT DRAINAGE STRUCTURE - SANITARY
 - (I) REMOVE SIGN
 - (J) SALVAGE MAILBOX SUPPORT



CONFLICT 01
 EXISTING FIBER PED #UNK TO BE ADJUSTED 20' NORTH AND SET AT EXISTING GRADE. MAINTAIN SIMILAR OFFSET FROM EDGE OF PAVEMENT. MAINTAIN EXISTING HOUSE DROP. STA 110+00

CONFLICT 02
 ROAD CONTRACTOR TO PROTECT AND SUPPORT EXISTING 1 FIBER (APPROX. 38" BELOW EXISTING GRADE) STA 110+00

CONFLICT 03
 EXISTING HANDHOLE #UNK AND EXISTING PEDESTAL #UNK TO BE ADJUSTED APPROX. 7' EAST AND SET AT PROPOSED GRADE. COORDINATE WITH ROAD CONTRACTOR. STA 110+00

CONFLICT 04
 EXISTING 144 FIBER TO BE PROTECTED AND SUPPORTED DURING WATERMAIN AND SANITARY SEWER CONSTRUCTION. COORDINATE WITH ROAD CONTRACTOR TO SHIFT FIBER OUT OF TRENCHES AND REBURY AFTER WORK IS COMPLETE. (FIBER APPROX. 47-59" BELOW EXISTING GRADE) STA 110+00 TO STA 114+50

CONFLICT 05
 EXISTING HANDHOLE #UNK AND FIBER PED #UNK TO BE LOWERED APPROXIMATELY 6". COORDINATE WITH ROAD CONTRACTOR. STA 114+50

CONFLICT 06
 EXISTING 144 FIBER TO BE PROTECTED AND SUPPORTED DURING SANITARY SEWER CONSTRUCTION. COORDINATE WITH ROAD CONTRACTOR TO SHIFT FIBER OUT OF TRENCHES AND REBURY AFTER WORK IS COMPLETE. STA 114+50 TO STA 115+00

HENNEPIN COUNTY
 CITY OF MAPLE GROVE

1:39:26 PM 01/21/2022 ...F:\InaIP\lan\11856_rem02.dgn

NO	DATE	BY	CKD	APPR	REVISION

I hereby certify that this plan, specification, or report was prepared by me or under my direct supervision and that I am a duly Licensed Professional Engineer under the laws of the State of Minnesota.
 Print Name: TYLER A. SMITH
Tyler Smith
 Date: 01/21/2022 License #: 56135

CITY PROJECT NO. 18-23
 COMM. NO. 11856



CITY OF MAPLE GROVE
 REMOVAL PLANS
 COOK LAKE

SHEET
 30
 OF
 79